

১০০  
বাংলাদেশ



# Gas and Coal Reserve & Production

May 2021



হাইড্রোকার্বন ইউনিট

জ্বালানি ও খনিজ সম্পদ বিভাগ

## Gas Reserve & Production at a glance

Gas Initially in Place (GIIP)	:	40,092.19 Bcf
Recoverable (2P)	:	30,055.40 Bcf
Cumulative Production as of May 2021	:	18,605.53 Bcf
Remaining Reserve up to May 2021	:	11,449.87 Bcf
Gas Production in May 2021	:	71.76 Bcf
National Oil Company (NOC's) production in May 2021	:	25.18 Bcf
International Oil Company (IOC's) production in May 2021	:	46.58 Bcf
No. of National Oil Company (NOC's) in May 2021	:	3 (BGFCL, BAPEX, SGFL)
No. of International Oil Company (IOC's) in May 2021	:	2 (Chevron, Tullow)
Total gas fields of National Oil Company (NOC) in May 2021	:	21
Total gas fields of International Oil Company (IOC) in May 2021	:	5
Total gas wells of National Oil Company (NOC) in May 2021	:	115
Total gas wells of International Oil Company (IOC) in May 2021	:	60
No. of National Oil Company (NOC's) gas production well in May 2021	:	70
No. of Intl. Oil Company (IOC's) gas production well in May 2021	:	42
No. of National Oil company (NOC's) suspended well in May 2021	:	45
No. of International Oil company (IOC's) suspended well in May 2021	:	18
Total LNG Import in May 2021	:	22.68 Bcf
Total LNG Import from July 2020 to May 2021	:	192.07 Bcf
Cumulative LNG Import from August 2018	:	510.84 Bcf

## Executive Summary of May 2021

Total gas and condensate Production in May 2021 were 71.76 Bcf and 242449.43 Bbl. During the previous month i.e. April 2021, gas and condensate production were 73.18 Bcf and 258995.53 Bbl and in the same month of the previous year i.e. May 2020, total gas and condensate production were 67.48 Bcf and 298639.10 Bbl respectively. The National Oil Companies (NOC's) and International Oil Companies (IOC's) Produced 25.18 Bcf and 46.58 Bcf gas respectively in May 2021. During the previous month i.e. April 2021, gas production by the National Oil Companies (NOC's) and International Oil Companies (IOC's) were 24.80 Bcf and 48.37 Bcf respectively. In the month of May 2021, Bibiyana gas field Produced 38.20 Bcf gas and it ranked top among the gas producers. Average production from the field during the month of May 2021 was 1232 Mmcf/d. It is noted that Bibiyana gas field Produced 39.47 Bcf in April 2021.

During the month of May 2021 total production of condensate was 242449.43 Bbl compared to 258995.53 Bbl in the previous month i.e. April 2021. Bibiyana gas field Produced 172634.00 Bbl condensate and ranked top while Jalalabad ranked 2<sup>nd</sup> by producing 29114.21 Bbl.

In the month of May 2021 total coal production was 131,541.91 Ton. During the previous month i.e. April 2021 total coal production was 682.36 Ton. It indicates that 130,859.55 Ton more Coal was produced compared to the previous month.

Total LNG import in May 2021 was 22.68 Bcf. As a result, Total LNG Import in this FY is 192.07 Bcf and cumulative LNG import stands on 510.84 Bcf from August 2018.

## **Table of Contents**

<b>Gas Report</b>	<b>Page No.</b>
Summary	1
summary of Reserve and Production	2
Production comparison between April 2021 & May 2021	3
Production per well & production, reserve ratio	4
Monthly Production by Fields & Wells up to May 2021	5-12
Monthly Condensate Production by Fields up to May 2021	13-14
Monthly Water Production by Fields from May 2021	15-16
Conditions of Field and Well up to May 2021	17-21
<b>Chart</b>	
Well-wise Production of All fields in 2019-20	22
Reserve, Production and Remaining Reserve as of May 2021	23
Daily Average Gas Production from January 2015 to May 2021	24
Field wise Daily Average Production as of May 2021	25
Well wise Daily Average Production-BGFCL as of May 2021	26
Well wise Daily Average Production-BAPEX and SGFL, May 2021	27
Well wise Daily Average Production-IOC and JVA, May 2021	28
Comparison of Field wise Avg Gas Production between April 21 & May 21	29
Daily Average Production by Operator, May 2021	30
Comparison of Operator wise daily Avg Production between April 21 & May 21	31
Daily Average Production – National vs IOC's, May 2021	32
Daily Avg Gas Production- National vs IOC's between April 21 & May 21	33
Daily Average Production IOC's and JVA, May 2021	34
Monthly Condensate Production, May 2021	35
<b>Coal Report</b>	
Summary	36-37
Barapukuria Coal Mine-MPM and P Contract (BCMCL)	38
Barapukuria Coal Mine Day wise Data Graph for May 2021	39

## Summary of Reserve, Production & Import As of May 2021

<b>Gas Initially Place (Proven + Probable)</b>	<b>40,092.19 Bcf</b>	<b>40.09 Tcf</b>
<b>Recoverable (Proven + Probable)</b>	<b>30,055.40 Bcf</b>	<b>30.06 Tcf</b>
<b>Gas Production in May 2021</b>	<b>71.76 Bcf</b>	<b>0.07 Tcf</b>
<b>Cumulative Gas Production as of May 2021</b>	<b>18,605.53 Bcf</b>	<b>18.61 Tcf</b>
<b>Remaining Reserve</b>	<b>11,449.87 Bcf</b>	<b>11.45 Tcf</b>

*NOTE: Reserve figure based on "Updated Report on Bangladesh Gas Reserve Estimation 2010", prepared by Gustavson Associates LLC, USA*

<b>Total LNG Import in May 2021</b>	<b>22.68 Bcf</b>	<b>0.02 Tcf</b>
<b>Total LNG Import from July 2020 to May 2021</b>	<b>192.07 Bcf</b>	<b>0.19 Tcf</b>
<b>Cumulative LNG Import from August 2018</b>	<b>510.84 Bcf</b>	<b>0.51 Tcf</b>

# Summary of Reserve and Production

(As of May 2021)

Gas Bcf



SI No.	Field	2P	GIIP	2P Reserve	Gas Prod. In May'21	Cum. Gas Production	Remaining Reserve	Cum. Condensate Production
1	Begumganj		47.0	33.0	0.19	6.5	26.5	2
2	Shahbazpur		415.0	261.0	1.51	69.4	191.6	11
3	Semutang		654.0	318.0	0.03	13.8	304.2	5
4	Fenchuganj		483.0	329.0	0.42	162.9	166.1	117
5	Salda Nadi		393.0	275.0	0.05	95.2	179.8	59
6	Srikail*		230.0	161.0	1.22	109.3	51.7	209
7	Sundalpur *		62.2	50.2	0.23	18.3	31.9	1
8	Rupganj		48.0	33.6	0.00	0.7	32.9	1
<b>Bapex</b>			<b>2,332.2</b>	<b>1,460.8</b>	<b>3.64</b>	<b>476.0</b>	<b>984.8</b>	<b>404</b>
9	Meghna		122.0	101.0	0.22	76.4	24.6	123
10	Narshingdi		405.0	345.0	0.83	223.0	122.0	451
11	Kamta		72.0	50.0	0.00	21.1	28.9	4
12	Habiganj		3,981.0	2,787.0	5.18	2,593.6	193.4	144
13	Bakhrabad		1,825.0	1,387.0	1.10	845.8	541.2	1,053
14	Titas		9,039.0	7,582.0	11.48	5,026.8	2,555.2	5,527
<b>BGFCL</b>			<b>15,444.0</b>	<b>12,252.0</b>	<b>18.81</b>	<b>8,786.8</b>	<b>3,465.2</b>	<b>7,303</b>
15	Sangu		976.0	771.0	0.00	489.5	281.5	37
<b>Santos/Cairn</b>			<b>976.0</b>	<b>771.0</b>	<b>0.00</b>	<b>489.5</b>	<b>281.5</b>	<b>37</b>
16	Bibiyana**		8,383.0	4,532.0	38.20	4,703.0	-171.0	27,981
17	Moulavi Bazar**		494.0	494.0	0.40	336.2	157.8	120
18	Jalalabad**		2,716.0	2,716.0	5.67	1,458.3	1,257.7	10,974
<b>Chevron</b>			<b>11,593.0</b>	<b>7,742.0</b>	<b>44.27</b>	<b>6,497.5</b>	<b>1,244.5</b>	<b>39,074</b>
19	Feni		185.0	130.0	0.00	63.0	67.0	110
<b>Niko</b>			<b>185.0</b>	<b>129.6</b>	<b>0.00</b>	<b>63.0</b>	<b>66.6</b>	<b>110</b>
20	Kailas Tila		3,463.0	2,880.0	1.03	772.2	2,107.8	8,195
21	Sylhet		580.0	408.0	0.12	217.6	190.4	818
22	Rashidpur		3,887.0	3,134.0	1.35	669.0	2,465.0	813
23	Chattak		677.0	474.0	0.00	25.8	448.2	4
24	Beani Bazar		225.0	137.0	0.24	102.5	34.5	1,682
<b>SGFL</b>			<b>8,832.0</b>	<b>7,033.0</b>	<b>2.73</b>	<b>1,787.1</b>	<b>5,245.9</b>	<b>11,511</b>
25	Bangura		730.0	621.0	2.31	505.7	115.3	1,298
<b>Tullow</b>			<b>730.0</b>	<b>621.0</b>	<b>2.31</b>	<b>505.7</b>	<b>115.3</b>	<b>1,298</b>
26	Kutubdia		65.0	46.0	0.00	0.0	46.0	0
<b>Total</b>			<b>40,092.2</b>	<b>30,055.4</b>	<b>71.76</b>	<b>18,605.5</b>	<b>11,449.9</b>	<b>59,736</b>

\* Preliminary reserve estimated by BAPEX

\*\* 2P reserve estimation by Petrobangla has crossed the limit. So 2P reserve is estimated as GIIP reserve now.

## Production comparison between Apr'21 & May'21



SI No.	Field	Gas Prod. (MMcf) in Apr'21	Daily Avg. (MMcfd) in Apr'21	Gas Prod. (MMcf) in May'21	Daily Avg. (MMcfd) in May'21
1	Begumganj	171	6	188	6
2	Shahbazpur	1567	52	1514	49
3	Semutang	26	1	27	1
4	Fenchuganj	163	5	415	13
5	Salda Nadi	57	2	51	2
6	Srikail	1010	34	1220	39
7	Sundalpur	223	7	228	7
8	Rupganj	0	0	0	0
<b>Bapex</b>		<b>3216</b>	<b>107</b>	<b>3642</b>	<b>117</b>
9	Meghna	209	7	219	7
10	Narshingdi	788	26	828	27
11	Kamta	0	0	0	0
12	Habiganj	5078	169	5177	167
13	Bakhrabad	1059	35	1098	35
14	Titas	11680	389	11484	370
<b>BGFCL</b>		<b>18813</b>	<b>627</b>	<b>18806</b>	<b>607</b>
15	Sangu	0	0	0	0
<b>Santos/Cairn</b>		<b>0</b>	<b>0</b>	<b>0</b>	<b>0</b>
16	Bibiyana	39468	1316	38202	1232
17	Moulavi Bazar	475	16	399	13
18	Jalalabad	5891	196	5669	183
<b>Chevron</b>		<b>45834</b>	<b>1528</b>	<b>44270</b>	<b>1428</b>
19	Feni	0	0	0	0
<b>Niko</b>		<b>0</b>	<b>0</b>	<b>0</b>	<b>0</b>
20	Kailas Tila	1093	36	1026	33
21	Sylhet	112	4	115	4
22	Rashidpur	1334	44	1352	44
23	Chattak	0	0	0	0
24	Beani Bazar	236	8	239	8
<b>SGFL</b>		<b>2774</b>	<b>92</b>	<b>2732</b>	<b>88</b>
25	Bangura	2538	85	2307	74
<b>Tullow</b>		<b>2538</b>	<b>85</b>	<b>2307</b>	<b>74</b>
26	Kutubdia	0	0	0	0
<b>Total</b>		<b>73176</b>	<b>2439</b>	<b>71757</b>	<b>2315</b>

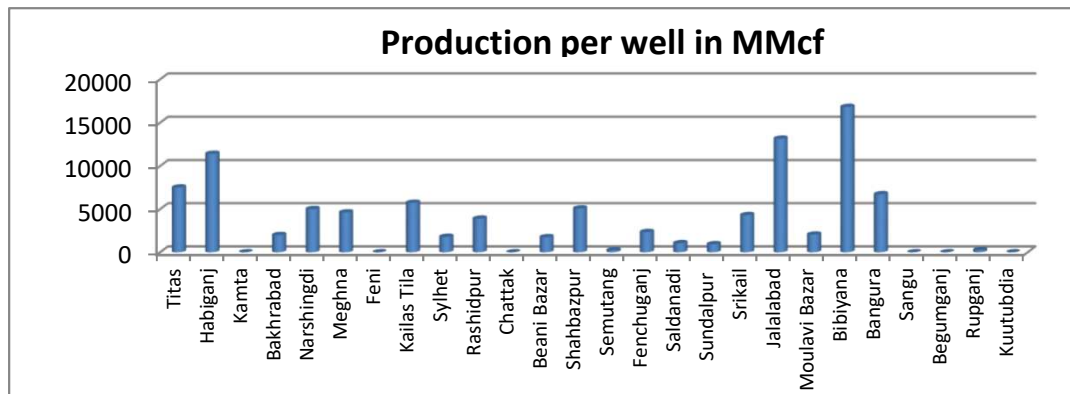
## Production per well & production reserve ratio



**HYDROCARBON UNIT**

Energy & Mineral Resources Division

	No of production well	Total 2p- Recoverable	2019-20 production	production per well mmcf	production reserve ratio
Titas	26	7582	153.5	5903.85	0.020
Habiganj	8	2787	67.89	8486.25	0.024
Kamta	0	50	0	0.00	0.000
Bakhrabad	7	1387	15.02	2145.71	0.011
Narshingdi	2	345	9.09	4545.00	0.026
Meghna	1	101	3.1	3100.00	0.031
Feni	0	130	0	0.00	0.000
Kailas Tila	4	2880	20.19	5047.50	0.007
Sylhet	1	408	1.36	1360.00	0.003
Rashidpur	5	3134	17.53	3506.00	0.006
Chattak	0	474	0	0.00	0.000
Beani Bazar	1	137	3.06	3060.00	0.022
Shahbazpur	4	261	16.8	4200.00	0.064
Semutang	2	318	0.32	160.00	0.001
Fenchuganj	2	329	1.42	710.00	0.004
Saldanadi	2	275	2.17	1085.00	0.008
Sundalpur	1	50.2	2.6	2600.00	0.052
Srikail	3	161	11.19	3730.00	0.070
Jalalabad	7	2716	73.11	10444.29	0.027
Moulavi Bazar	4	494	5.33	1332.50	0.011
Bibiyana	26	4532	447.87	17225.77	0.099
Bangura	5	621	33.45	6690.00	0.054
Sangu	0	771	0	0.00	0.000
Begumganj	1	33	1.94	0.00	0.059
Rupganj	0	33.6	0	0.00	0.000
Kuutubdia	0	46	0	0.00	0.000
<b>Total</b>	<b>112</b>	<b>30055.8</b>	<b>886.94</b>	<b>7919.11</b>	<b>0.030</b>





## Monthly Production by Field and Well upto May- 2021



**HYDROCARBON UNIT**  
Energy & Mineral Resources Division

Figures in mmscf

Well	Jan	Feb	Mar	Apr	May	Jun	Jul	Aug	Sep	Oct	Nov	Dec	Total	Cumulative	2020	2019	2018
<b>Field : Bakharabad</b>																	
BKB-1	407	357	326	335	371								1,796	151,150	4,892	3,295	0
BKB-2	0	0	0	0	0								0	87,012	63	378	445
BKB-3	163	146	158	153	154								773	165,240	1,864	1,757	1,989
BKB-4	0	0	0	0	0								0	55,872	0	0	
BKB-5	141	127	120	106	110								604	62,875	1,703	1,757	1,822
BKB-6	0	0	0	0	0								0	50,069	0	0	0
BKB-7	0	0	0	0	0								0	107,750	0	0	0
BKB-8	252	227	248	238	240								1,206	133,001	2,969	2,565	2,017
BKB-9	170	150	165	160	156								802	26,680	2,171	2,585	3,332
BKB-10	75	67	70	66	68								346	6,127	1,015	1,092	1,297
<b>Field Total:</b>	<b>1,209</b>	<b>1,074</b>	<b>1,087</b>	<b>1,059</b>	<b>1,098</b>	<b>0</b>	<b>0</b>	<b>0</b>	<b>0</b>	<b>0</b>	<b>0</b>	<b>0</b>	<b>5,527</b>	<b>845,775</b>	<b>14,678</b>	<b>13,429</b>	<b>10,903</b>
Daily Avg.(mmscfd)	39	38	35	35	35	0	0	0	0	0	0	0	37		40	37	30
<b>Field : Bangura</b>																	
Bangura-1	339	304	270	322	306								1,541	98,573	3,640	4,138	4,615
Bangura-2	399	358	356	364	326								1,802	90,993	4,340	5,312	6,802
Bangura-3	489	438	394	444	397								2,162	110,042	4,958	6,195	7,265
Bangura-6	235	211	145	214	191								996	17,160	3,700	3,518	4,847
Bangura-5	1,351	1,186	1,261	1,195	1,087								6,081	188,921	15,921	16,177	8,410
<b>Field Total:</b>	<b>2,813</b>	<b>2,498</b>	<b>2,426</b>	<b>2,538</b>	<b>2,307</b>	<b>0</b>	<b>0</b>	<b>0</b>	<b>0</b>	<b>0</b>	<b>0</b>	<b>0</b>	<b>12,582</b>	<b>505,689</b>	<b>32,559</b>	<b>35,340</b>	<b>31,940</b>
Daily Avg.(mmscfd)	91	89	78	85	74	0	0	0	0	0	0	0	83		89	97	88
<b>Field : Beani Bazar</b>																	
BB-1	0	0	0	0	0	0	0	0	0	0	0	0	0	35,481	0	0	0
BB-2	245	219	243	236	239								1,181	66,992	2,940	3,135	3,276
<b>Field Total:</b>	<b>245</b>	<b>219</b>	<b>243</b>	<b>236</b>	<b>239</b>	<b>0</b>	<b>0</b>	<b>0</b>	<b>0</b>	<b>0</b>	<b>0</b>	<b>0</b>	<b>1,181</b>	<b>102,473</b>	<b>2,940</b>	<b>3,135</b>	<b>3,276</b>
Daily Avg.(mmscfd)	8	8	8	8	8	0	0	0	0	0	0	0	8		8	9	9
<b>Field : Bibiyana</b>																	
BY-1	2,188	1,947	1,989	1,914	1,755								9,793	433,416	26,283	29,455	21,743
BY-2	1,070	942	886	869	773								4,540	309,176	12,748	17,462	21,388
BY-3	1,350	954	1,660	1,556	1,508								7,028	261,185	14,326	4,562	6,249
BY-4	1,836	1,653	1,676	1,605	1,483								8,253	236,245	22,661	24,793	28,559
BY-5	122	512	1,032	989	925								3,580	187,156	5,441	6,168	6,131
BY-6	138	331	1,607	1,528	1,425								5,028	243,083	7,419	9,140	11,057
BY-7	1,791	1,610	1,624	1,562	1,471								8,058	301,096	21,873	26,581	23,155
BY-8	1,793	1,617	1,646	1,602	1,607								8,265	160,822	9,776	8,538	8,921
BY-9	1,768	1,585	1,639	1,603	1,507								8,101	145,345	7,462	5,164	4,093

## Monthly Production by Field and Well upto May- 2021



**HYDROCARBON UNIT**  
Energy & Mineral Resources Division

Figures in mmscf

Well	Jan	Feb	Mar	Apr	May	Jun	Jul	Aug	Sep	Oct	Nov	Dec	Total	Cumulative	2020	2019	2018					
BY-10	1,769	1,594	1,630	1580	1,490								8,062	382,734	16,678	22,997	30,954					
BY-11	2,125	1,910	1,927	1918	1,797								9,677	157,815	19,194	8,983	12,147					
BY-12	1,810	1,644	1,680	1629	1,602								8,364	173,140	17,675	24,399	6,835					
BY-13	2,239	1,995	2,046	1953	1,844								10,078	115,715	21,893	10,785	13,171					
BY-14	2	0	1	86	549								638	109,444	9,202	8,991	11,523					
BY-15	1,446	1,258	1,230	1335	1,229								6,497	145,771	20,428	21,925	24,295					
BY-16	2,178	1,937	1,979	1901	1,838								9,833	93,699	12,548	10,246	9,264					
BY-17	1,375	1,098	1,165	1139	1,086								5,863	119,447	17,109	18,604	17,603					
BY-18	2,109	1,888	1,935	1876	1,794								9,601	183,697	26,284	30,009	31,890					
BY-19	1,986	1,779	1,822	1753	1,621								8,959	92,130	23,886	27,207	8,144					
BY-20	1,809	1,631	1,648	1580	1,549								8,217	90,733	21,972	22,699	7,840					
BY-21	2,062	1,848	1,893	1838	1,786								9,426	73,866	20,638	8,577	9,670					
BY-22	1,413	1,229	1,287	1255	1,270								6,454	150,519	16,774	19,492	24,755					
BY-23	1,855	1,652	1,701	1732	1,736								8,676	108,107	22,066	25,318	32,043					
BY-24	814	817	1,013	937	936								4,517	83,254	10,304	10,269	13,268					
BY-25	1,996	1,767	1,838	1785	1,735								9,121	163,723	22,625	26,797	28,306					
BY-26	2,168	1,948	1,960	1945	1,887								9,908	181,649	26,748	29,429	33,853					
<b>Field Total:</b>	<b>41212</b>	<b>37143</b>	<b>40513</b>	<b>39468</b>	<b>38202</b>	<b>0</b>	<b>0</b>	<b>0</b>	<b>0</b>	<b>0</b>	<b>0</b>	<b>0</b>	<b>196,538</b>	<b>4,702,967</b>	<b>454,012</b>	<b>458,589</b>	<b>446,855</b>					
<b>Daily Avg.(mmscfd)</b>	1329	1,327	1307	1316	1232	0	0	0	0	0	0	0	1,302		1,240	1,256	1,224					
<b>Field : Chattak</b>																						
Ch-1	Production Suspended													25,834								
<b>Field Total:</b>	<b>0</b>													<b>25,834</b>								
<b>Daily Avg.(mmscfd)</b>	0													0								
<b>Field : Fenchuganj</b>																						
Fenchuganj-2														0	38,169	0	0	0				
Fenchuganj-3	154	148	159	163	132													756	94,819	1,547	1,877	3,186
Fenchuganj-4	0	0	0	0	283													283	29,865	3	305	809
<b>Field Total:</b>	<b>154</b>	<b>148</b>	<b>159</b>	<b>163</b>	<b>415</b>	<b>0</b>	<b>0</b>	<b>0</b>	<b>0</b>	<b>0</b>	<b>0</b>	<b>0</b>	<b>1,039</b>	<b>162,852</b>	<b>1,550</b>	<b>2,182</b>	<b>3,994</b>					
<b>Daily Avg.(mmscfd)</b>	5	5	5	5	13	0	0	0	0	0	0	0	7		4	6	11					
<b>Field : Feni</b>																						
Feni-1	Production Suspended								0	0	0	34,214										
Feni-2	Production Suspended								0	0	0	6,119										
Feni-3	Production Suspended								0	0	0	2,176										

## Monthly Production by Field and Well upto May- 2021



**HYDROCARBON UNIT**  
Energy & Mineral Resources Division

Figures in mmscf

Well	Jan	Feb	Mar	Apr	May	Jun	Jul	Aug	Sep	Oct	Nov	Dec	Total	Cumulative	2020	2019	2018
Feni-4	Production Suspended								0	0				14,386			
Feni-5	Production Suspended								0	0				6,127			
<b>Field Total:</b>													<b>63,023</b>				
<b>Daily Avg.(mmscfd)</b>																	
<b>Field :</b>	<b>Habiganj</b>																
Hbj-1	0	192	179	141	153								666	286,549	3,651	4,124	2,207
Hbj-2	0	0	0	0	0								0	275,704	0	0	0
Hbj-3	805	676	748	721	735								3,685	401,740	9,952	10,947	13,155
Hbj-4	805	676	748	721	735								3,685	396,198	9,952	10,947	13,155
Hbj-5	715	646	717	691	704								3,472	318,742	8,620	8,977	9,497
Hbj-6	469	422	468	453	460								2,271	175,134	5,305	5,349	5,487
Hbj-7	1,210	1,090	1,202	1,170	1,195								5,867	286,928	13,671	14,272	14,533
Hbj-8	0	0	0	0	0								0	11,023	0	0	0
Hbj-9	0	0	0	0	0								0	52,652	0	0	0
Hbj-10	869	756	832.1	763	767.2								3,987	277,504	9,961	10,423	13,928
Hbj-11	463	392	431.4	419.1	428								2,133	111,456	6,094	6,920	9,579
<b>Field Total:</b>	<b>5,336</b>	<b>4,848</b>	<b>5,326</b>	<b>5,078</b>	<b>5,177</b>	<b>0</b>	<b>0</b>	<b>0</b>	<b>0</b>	<b>0</b>	<b>0</b>	<b>0</b>	<b>25,765</b>	<b>2,593,630</b>	<b>67,206</b>	<b>71,959</b>	<b>81,540</b>
<b>Daily Avg.(mmscfd)</b>	172	173	172	169	167	0	0	0	0	0	0	0	171		184	197	223
<b>Field :</b>	<b>Jalalabad</b>																
JB-1	849	762	794	747	708								3,859	268,043	9,224	9,191	10,469
JB-2	1,043	935	987	950	919								4,833	307,473	11,644	11,400	12,973
JB-3	1,373	1,231	1,292	1,269	1,219								6,383	377,303	15,132	15,263	17,399
JB-4	726	647	677	585	551								3,186	294,307	7,355	4,766	5,821
JB-6	1,385	1,232	1,337	1,307	1,273								6,535	95,695	14,814	15,021	17,364
JB-7	0	0	0	0	0								1	43,505	2,718	11,396	13,053
JB-8	1,085	968	1,050	1,033	999								5,134	71,935	11,643	11,228	12,793
<b>Field Total:</b>	<b>6,461</b>	<b>5,775</b>	<b>6,136</b>	<b>5,891</b>	<b>5,669</b>	<b>0</b>	<b>0</b>	<b>0</b>	<b>0</b>	<b>0</b>	<b>0</b>	<b>0</b>	<b>29,932</b>	<b>1,458,262</b>	<b>72,531</b>	<b>78,265</b>	<b>89,872</b>
<b>Daily Avg.(mmscfd)</b>	208	206	198	196	183	0	0	0	0	0	0	0	198		198	214	246
<b>Field :</b>	<b>Kailas Tila</b>																
KTL-1	0	0	0	0	0								0	205,181	0	371	462

## Monthly Production by Field and Well upto May- 2021



**HYDROCARBON UNIT**  
Energy & Mineral Resources Division

Figures in mmscf

Well	Jan	Feb	Mar	Apr	May	Jun	Jul	Aug	Sep	Oct	Nov	Dec	Total	Cumulative	2020	2019	2018
KTL-2	369	299	250	193	99								1,210	192,814	6,291	7,166	7,190
KTL-3	0	0	0	0	0								0	140,672	269	2,583	2,947
KTL-4	167	152	168	162	167								816	101,690	2,139	2,639	3,336
KTL-5	0	0	0	0	0								0	17,923	0	0	0
KTL-6	756	690	763	738	761								3,709	113,089	9,249	9,042	8,950
KTL-7	0	0	0	0	0								0	816	0	0	0
<b>Field Total:</b>	<b>1,292</b>	<b>1,142</b>	<b>1,182</b>	<b>1,093</b>	<b>1,026</b>	<b>0</b>	<b>0</b>	<b>0</b>	<b>0</b>	<b>0</b>	<b>0</b>	<b>0</b>	<b>5,736</b>	<b>772,184</b>	<b>17,949</b>	<b>21,801</b>	<b>22,886</b>
<b>Daily Avg.(mmscfd)</b>	42	41	38	36	33	0	0	0	0	0	0	0	38		49	60	63
<b>Field : Kamta</b>																	
Kamta-1	Production Suspended													21,139			
<b>Field Total:</b>			0	0	0	0	0	0	0	0	0	0		21,139			
<b>Daily Avg.(mmscfd)</b>																	
<b>Field : Meghna</b>																	
M-1	218	198	211	209	219								1,054	76,431	2,945	3,458	4,538
<b>Field Total:</b>	<b>218</b>	<b>198</b>	<b>211</b>	<b>209</b>	<b>219</b>	<b>0</b>	<b>0</b>	<b>0</b>	<b>0</b>	<b>0</b>	<b>0</b>	<b>0</b>	<b>1,054</b>	<b>76,431</b>	<b>2,945</b>	<b>3,458</b>	<b>4,538</b>
<b>Daily Avg.(mmscfd)</b>	7	7	7	7	7	0	0	0	0	0	0	0	7		8	9	12
<b>Field : Moulavi Bazar</b>																	
MV Bazar-2	57	34	34	39	28								192	56,216	1,217	770	2,302
MV Bazar-3	335	305	238	286	220								1,384	165,062	3,848	2,022	3,712
MV Bazar-4	72	71	54	59	70								326	59,707	266	1,047	3,103
MV Bazar-5	0	0	0	0	0									66			
MV Bazar-6	98	84	82	92	81								436	19,199	529	1,886	1,734
MV Bazar-7	0	0	0	0	0								0	5,648	0	4	21
MV Bazar-9	0	0	0	0	0								0	30,337	0	1	1
<b>Field Total:</b>	<b>562</b>	<b>494</b>	<b>408</b>	<b>475</b>	<b>399</b>	<b>0</b>	<b>0</b>	<b>0</b>	<b>0</b>	<b>0</b>	<b>0</b>	<b>0</b>	<b>2,338</b>	<b>336,235</b>	<b>5,859</b>	<b>5,730</b>	<b>10,872</b>
<b>Daily Avg.(mmscfd)</b>	18	18	13	16	13	0	0	0	0	0	0	0	15		16	16	30
<b>Field : Narshingdi</b>																	
N-1	502	445	504	464	491								2,405	158,623	5,960	5,663	6,181
N-2	324	268	352	324	338								1,605	64,368	3,661	3,732	3,705
<b>Field Total:</b>	<b>825</b>	<b>712</b>	<b>856</b>	<b>788</b>	<b>828</b>	<b>0</b>	<b>0</b>	<b>0</b>	<b>0</b>	<b>0</b>	<b>0</b>	<b>0</b>	<b>4,009</b>	<b>222,990</b>	<b>9,621</b>	<b>9,395</b>	<b>9,886</b>

## Monthly Production by Field and Well upto May- 2021



**HYDROCARBON UNIT**  
Energy & Mineral Resources Division

Figures in mmscf

Well	Jan	Feb	Mar	Apr	May	Jun	Jul	Aug	Sep	Oct	Nov	Dec	Total	Cumulative	2020	2019	2018
<b>Daily Avg.(mmscfd)</b>	27	25	28	26	27	0	0	0	0	0	0	0	27		26	26	27
<b>Field : Rashidpur</b>																	
RP-1	557	502	553	539	543								2,695	182,510	6,447	6,305	6,505
RP-2	0	0	0	0	0								0	82,474	0	0	
RP-3	155	165	200	209	217								946	138,488	2,891	3,443	3,541
RP-4	222	200	223	215	216								1,077	134,513	2,655	2,886	3,227
RP-5	0	0	0	0	0								0	25,647	0	0	
RP-6	0	0	0	0	0								0	9,983	0	0	0
RP-7	140	126	136	132	132								667	68,407	1,628	1,786	2,096
RP-8	258	228	248	238	243								1,216	26,992	3,228	3,515	3,696
<b>Field Total:</b>	<b>1,333</b>	<b>1,222</b>	<b>1,361</b>	<b>1,334</b>	<b>1,352</b>	<b>0</b>	<b>0</b>	<b>0</b>	<b>0</b>	<b>0</b>	<b>0</b>	<b>0</b>	<b>6,601</b>	<b>669,014</b>	<b>16,849</b>	<b>17,936</b>	<b>19,065</b>
<b>Daily Avg.(mmscfd)</b>	43	44	44	44	44	0	0	0	0	0	0	0	44		46	49	52
<b>Field : Salda Nadi</b>																	
Salda-1	0	0	0	0	0	0	0	0	0	0	0	0	0	36,904	0	0	0
Salda-2	0	0	0	0	0	0	0	0	0	0	0	0	0	28,495	0	0	0
Salda-3	108	72	83	50	48								362	29,464	1,712	1,809	1,067
Salda-4	30	15	9	6	3								64	301	92	29	70
<b>Field Total:</b>	<b>138</b>	<b>87</b>	<b>92</b>	<b>57</b>	<b>51</b>	<b>0</b>	<b>0</b>	<b>0</b>	<b>0</b>	<b>0</b>	<b>0</b>	<b>0</b>	<b>426</b>	<b>95,164</b>	<b>1,804</b>	<b>1,838</b>	<b>1,137</b>
<b>Daily Avg.(mmscfd)</b>	4	3	3	2	2	0	0	0	0	0	0	0	3		5	5	3
<b>Field : Sangu</b>																	
Sangu-1	0	0	0	0	0	0	0	0	0	0	0	0	0	116,191	0	0	0
Sangu-3z	0	0	0	0	0	0	0	0	0	0	0	0	0	131,796	0	0	0
Sangu-4	0	0	0	0	0	0	0	0	0	0	0	0	0	87,280			
Sangu-5	0	0	0	0	0	0	0	0	0	0	0	0	0	61,674			
Sangu-7	0	0	0	0	0	0	0	0	0	0	0	0	0	18,202			
Sangu-8	0	0	0	0	0	0	0	0	0	0	0	0	0	37,619			
Sangu-9	0	0	0	0	0	0	0	0	0	0	0	0	0	30,638	0	0	0
Sangu-10	Production Suspended						0	0	0	0	0	0	0				
Sangu-11	0	0	0	0	0	0	0	0	0	0	0	0	0	6,067	0	0	0
<b>Field Total:</b>	<b>0</b>	<b>0</b>	<b>0</b>	<b>0</b>	<b>0</b>	<b>0</b>	<b>0</b>	<b>0</b>	<b>0</b>	<b>0</b>	<b>0</b>	<b>0</b>	<b>0</b>	<b>489,467</b>	<b>0</b>	<b>0</b>	<b>0</b>

## Monthly Production by Field and Well upto May- 2021



**HYDROCARBON UNIT**  
Energy & Mineral Resources Division

Figures in mmscf

Well	Jan	Feb	Mar	Apr	May	Jun	Jul	Aug	Sep	Oct	Nov	Dec	Total	Cumulative	2020	2019	2018
<b>Daily Avg.(mmscfd)</b>	0	0	0	0	0	0	0	0	0	0	0	0	0		0	0	0
<b>Field :</b>	<b>Semutang</b>																
Semutang-5	3	0	0	0									3	12,311	104	140	291
Semutang-6	21	22	25	26	27								120	1,441	204	161	84
<b>Field Total:</b>	<b>24</b>	<b>22</b>	<b>25</b>	<b>26</b>	<b>27</b>	<b>0</b>	<b>0</b>	<b>0</b>	<b>0</b>	<b>0</b>	<b>0</b>	<b>0</b>	<b>123</b>	<b>13,753</b>	<b>308</b>	<b>301</b>	<b>375</b>
<b>Daily Avg.(mmscfd)</b>	1	1	1	1	1	0	0	0	0	0	0	0	1		1	1	1
<b>Field :</b>	<b>Shahbazpur</b>																
Shahbazpur-1	0	0	0	0	32								32	22,517	254	874	134
Shahbazpur-2	548	40	177	446	457								1,668	24,075	5,129	6,196	6,650
Shahbazpur-3	526	569	613	584	618								2,910		6,301	6,668	5,222
Shahbazpur-4	0	101	630	537	406								1,675	22,816	2,374	5,764	6,936
<b>Field Total:</b>	<b>1,074</b>	<b>711</b>	<b>1,420</b>	<b>1,567</b>	<b>1,514</b>	<b>0</b>	<b>0</b>	<b>0</b>	<b>0</b>	<b>0</b>	<b>0</b>	<b>0</b>	<b>6,285</b>	<b>69,408</b>	<b>14,058</b>	<b>19,501</b>	<b>18,943</b>
<b>Daily Avg.(mmscfd)</b>	35	25	46	52	49	0	0	0	0	0	0	0	42		38	53	52
<b>Field</b>	<b>Srikail</b>																
Srikail-2	369	302	278	243	230								1,422	49,104	4,450	5,288	5,154
Srikail-3	255	220	154	151	145								924	43,103	3,360	3,988	4,273
Srikail-4	612	582	644	617	644								3,099	17,131	2,561	3,026	2,971
East 1					202												
<b>Field Total:</b>	<b>1,236</b>	<b>1,104</b>	<b>1,076</b>	<b>1,010</b>	<b>1,220</b>	<b>0</b>	<b>0</b>	<b>0</b>	<b>0</b>	<b>0</b>	<b>0</b>	<b>0</b>	<b>5,445</b>	<b>109,337</b>	<b>10,371</b>	<b>12,301</b>	<b>12,398</b>
<b>Daily Avg.(mmscfd)</b>	40	39	35	34	39	0	0	0	0	0	0	0	36		28	34	34
<b>Field :</b>	<b>Sundalpur</b>																
Sundalpur -1	0	0	0	0	0	0	0	0	0	0	0	0	0	9,809	0	0	0
Sundalpur -2	224	209	234	223	228								1,118	8,516	2,649	2,572	2,176
<b>Field Total:</b>	<b>224</b>	<b>209</b>	<b>234</b>	<b>223</b>	<b>228</b>	<b>0</b>	<b>0</b>	<b>0</b>	<b>0</b>	<b>0</b>	<b>0</b>	<b>0</b>	<b>1,118</b>	<b>18,325</b>	<b>2,649</b>	<b>2,572</b>	<b>2,176</b>
<b>Daily Avg.(mmscfd)</b>	7	7	8	7	7	0	0	0	0	0	0	0	7		7	7	6
<b>Field :</b>	<b>Sylhet</b>																
Sylhet-3	Production Suspended													89,032			
Sylhet-6	Production Suspended													91,748			
Sylhet-7	117	105	116	112	115								565	30,306	1,377	1,373	1,622

## Monthly Production by Field and Well upto May- 2021



**HYDROCARBON UNIT**  
Energy & Mineral Resources Division

Figures in mmscf

Well	Jan	Feb	Mar	Apr	May	Jun	Jul	Aug	Sep	Oct	Nov	Dec	Total	Cumulative	2020	2019	2018
Surma-1													0	6,528	0	0	0
Field Total:	117	105	116	112	115	0	0	0	0	0	0	0	565	217,614	1,377	1,373	1,622
Daily Avg.(mmscfd)	4	4	4	4	4	0	0	0	0	0	0	0	4		4	4	4
<b>Field :</b>	<b>Titas</b>																
Titas-1	515	466	507	498	503								2,488	454,391	5,626	6,648	8,516
Titas-2	861	766	845	830	815								4,117	459,715	9,217	10,877	11,522
Titas-3	0	0	0	0	0								0	314,888	0	0	0
Titas-4	877	776	855	829	800								4,137	394,958	9,356	11,013	11,726
Titas-5	894	801	866	854	828								4,243	453,741	9,526	11,720	11,838
Titas-6	834	751	833	763	799								3,980	386,123	9,401	9,613	12,030
Titas-7	0	0	0	0	0								0	356,893	1,784	10,244	11,919
Titas-8	487	525	566	560	569								2,707	286,309	5,115	5,851	6,154
Titas-9	627	551	565	547	582								2,872	291,332	5,770	6,200	6,706
Titas-10	619	542	637	664	608								3,071	217,337	7,397	7,869	7,612
Titas-11	773	707	696	755	650								3,581	268,756	9,440	8,834	9,998
Titas-12	442	408	440	415	362								2,068	113,510	5,428	5,239	5,160
Titas-13	0	0	0	0	0								0	194,541	0	4,449	6,952
Titas-14	276	207	238	228	254								1,203	162,224	4,966	6,070	7,203
Titas-15	314	278	293	272	281								1,438	150,236	4,306	4,978	5,543
Titas-16	556	518	572	557	575								2,779	162,706	6,373	7,209	8,605
Titas-17	423	376	358	380	343								1,880	52,146	4,969	5,794	6,335
Titas-18	450	394	383	410	372								2,010	51,294	5,166	6,113	6,664
Titas-19	405	379	429	427	435								2,075	40,470	4,754	5,592	6,115
Titas-20	354	307	268	292	361								1,581	27,815	3,817	3,589	3,914
Titas-21	250	213	228	227	251								1,169	16,329	2,892	3,036	2,995
Titas-22	193	143	26	0	0								362	30,349	2,436	3,133	4,158
Titas-27	478	421	436	451	321								2,107	41,781	5,233	5,602	5,827
Titas-23	527	480	527	504	518								2,555	22,967	5,328	5,079	5,594
Titas-24	0	0	0	0	0								0	9,019	1,238	2,789	2,709
Titas-25	466	423	452	449	466								2,256	26,319	5,424	6,424	6,324
Titas-26	778	713	785	769	791								3,835	40,689	8,961	8,628	9,672
Field Total:	12,400	11,146	11,806	11,680	11,484	0	0	0	0	0	0	0	58,516	5,026,837	143,923	172,591	191,792

## Monthly Production by Field and Well upto May- 2021



**HYDROCARBON UNIT**  
Energy & Mineral Resources Division

Figures in mmscf

Well	Jan	Feb	Mar	Apr	May	Jun	Jul	Aug	Sep	Oct	Nov	Dec	Total	Cumulative	2020	2019	2018
<b>Daily Avg.(mmscfd)</b>	400	398	381	389	370	0	0	0	0	0	0	0	388		393	473	525
<b>Field : Begumganj</b>																	
<b>Begumganj-3</b>	179	170	186	171	188								893	6,452	1,940	2,150	593
<b>Field Total:</b>	<b>179</b>	<b>170</b>	<b>186</b>	<b>171</b>	<b>188</b>	<b>0</b>	<b>0</b>	<b>0</b>	<b>0</b>	<b>0</b>	<b>0</b>	<b>0</b>	<b>893</b>	<b>6,452</b>	<b>1,940</b>	2,150	593
<b>Daily Avg.(mmscfd)</b>	6	6	6	6	6	0	0	0	0	0	0	0	6		5	6	2
<b>Field : Rupganj</b>																	
<b>Rupganj-1</b>	0	0	0										0	679	0	0	0
<b>Field Total:</b>	<b>0</b>	<b>0</b>	<b>0</b>	<b>0</b>	<b>0</b>	<b>0</b>	<b>0</b>	<b>0</b>	<b>0</b>	<b>0</b>	<b>0</b>	<b>0</b>	<b>0</b>	<b>679</b>	<b>0</b>	0	0
<b>Daily Avg.(mmscfd)</b>	0	0	0	0	0	0	0	0	0	0	0	0	0		0	0	0
<b>Grand Total (in Bef)</b>	77.05	69.03	74.86	73.18	71.76	0.00	0.00	0.00	0.00	0.00	0.00	0.00	365.7	18,605.53	875.1	933.8	964.7
<b>Daily Avg.(mmscfd)</b>	2,486	2,465	2,415	2,439	2,315	0	0	0	0	0	0	0	2,422		2,391	2,558	2,643



## Monthly Condensate Production by Fields upto May 2021



Field Name	Jan	Feb	Mar	Apr	May	Jun	Jul	Aug	Sep	Oct	Nov	Dec	Total	Cumulative	2020	2019	2018	
														000' bbl				
Bakhrabad	1,633	1,454	1,290	1,190	1,138								6,705	1,053	18,004	8,201	5,022	
Daily Avg.	53	52	42	40	37	0	0	0	0	0	0	0	44		49	22	14	
Bangura	6,795	5,660	6,944	7,132	6,479								33,010	1,298	95,394	104,034	94,737	
Daily Avg.	219	202	224	238	209	0	0	0	0	0	0	0	219		261	285	260	
Beani Bazar	3,846	3,423	3,648	3,483	3,542								17,942	1,682	46,061	50,497	51,187	
Daily Avg.	124	122	118	116	114	0	0	27	0	0	0	0	119		126	138	140	
Bibiyana	204,519	179,529	206,226	188,534	172,634								951,442	27,981	2,780,633	3,094,275	3,267,318	
Daily Avg.	6,597	6,412	6,652	6,284	5,569	0	0	0	0	0	0	0	6,301		7,597	8,477	8,952	
Chattak	0	0	0	0	0	0	0	0	0	0	0	0	0	4	0	0	0	
Daily Avg.	0	0	0	0	0	0	0	0	0	0	0	0	0		0	0	0	
Fenchuganj	61	40	53	58	355								566	117	527	738	1,625	
Daily Avg.	2	1	2	2	11	0	0	0	0	0	0	0	4		1	2	4	
Feni	0	0	0	0	0	0	0	0	0	0	0	0	0	110	0	0	0	
Daily Avg.	0	0	0	0	0	0	0	0	0	0	0	0	0		0	0	0	
Habiganj	398	312	321	304	294								1,629	144	5,510	7,233	5,612	
Daily Avg.	13	11	10	10	9	0	0	0	0	0	0	0	11		15	20	15	
Jalalabad	32,269	28,160	29,898	29,650	29,114								149,091	10,974	367,161	318,424	367,160	
Daily Avg.	1,041	1,006	964	988	939	0	0	0	0	0	0	0	987		1,003	872	1,006	
Kailas Tila	0	14,528	13,848	12,390	11,541								52,307	8,195	177,210	170,713	189,620	
Daily Avg.	0	519	447	413	372	0	0	0	0	0	0	0	346		484	468	520	
Kamta	Production Suspended										0	0		4				
Daily Avg.	0										0	0		0		0	0	0
Meghna	452	392	452	456	498								2,250	123	6,652	7,098	7,947	
Daily Avg.	15	14	15	15	16	0	0	0	0	0	0	0	15		18	19	22	
Moulavi Bazar	74	85	61	79	68								367	120	1,262	745	856	
Daily Avg.	2	3	2	3	2	0	0	0	0	0	0	0	2		3	2	2	

## Monthly Condensate Production by Fields upto May 2021

Field Name	Jan	Feb	Mar	Apr	May	Jun	Jul	Aug	Sep	Oct	Nov	Dec	Total	Cumulative	2020	2019	2018
														000' bbl			
Narshingdi	1,180	980	1,121	1,067	1,081								5,429	451	13,907	14,029	15,797
Daily Avg.	38	35	36	36	35	0	0	0	0	0	0	0	36		38	38	43
Rashidpur	1,195	1,117	1,217	1,111	1,213								5,853	813	15,049	16,268	14,393
Daily Avg.	39	40	39	37	39	0	0	0	0	0	0	0	39		41	45	39
Saldanadi	16	12	11	4	0								44	59	240	302	137
Daily Avg.	1	0	0	0	0	0	0	0	0	0	0	0	0		1	1	0
Sangu	0	0	0	0	0	0	0	0	0	0	0	0	0	37	0	0	0
Daily Avg.	0	0	0	0	0	0	0	0	0	0	0	0	0		0	0	0
Semutang	0	0	0	0	0	0	0	0	0	0	0	0	0	5	0	4	26
Daily Avg.	0	0	0	0	0	0	0	0	0	0	0	0	0		0	0	0
Shahbazpur	190	126	219	200	196								931	11	1,839	2,034	2,488
Daily Avg.	6	4	7	7	6	0	0	0	0	0	0	0	6		5	6	7
Srikail	5,607	5,142	4,711	4,423	5,355								25,238	209	21,213	34,193	33,765
Daily Avg.	181	184	152	147	173	0	0	0	0	0	0	0	167		58	94	93
Sundalpur	8	9	10	8	9								43	1	89	172	121
Daily Avg.	0	0	0	0	0	0	0	0	0	0	0	0	0		0	0	0
Sylhet	656	644	710	641	676								3,327	818	8,982	9,691	10,277
Daily Avg.	21	23	23	21	22	0	0	0	0	0	0	0	22		25	27	28
Titas	10,145	8,740	8,535	8,208	8,191								43,819	5,527	117,408	141,979	159,803
Daily Avg.	327	312	275	274	264	0	0	0	0	0	0	0	290		321	389	438
Begumganj	50	51	57	57	65								281	2	380	711	201
Daily Avg.	2	2	0	0	0	0	0	0	0	0	0	0	2		1	2	1
Rupganj	0	0	0	0	0	0	0	0	0	0	0	0	0	1	0	0	0
Daily Avg.	0	0	0	0	0	0	0	0	0	0	0	0	0		0	0	0
<b>Total (000'bbl)</b>	<b>269</b>	<b>250</b>	<b>279</b>	<b>259</b>	<b>242</b>	<b>0</b>	<b>0</b>	<b>0</b>	<b>0</b>	<b>0</b>	<b>0</b>	<b>0</b>	<b>1,300</b>	<b>59,736</b>	<b>3,678</b>	<b>3,981</b>	<b>4,228</b>
<b>Daily Avg. (000'bbl)</b>	<b>8.7</b>	<b>8.9</b>	<b>9.0</b>	<b>8.6</b>	<b>7.8</b>	<b>0</b>	<b>0.0</b>	<b>0.0</b>	<b>0.0</b>	<b>0.0</b>	<b>0.0</b>	<b>0</b>	<b>9</b>		<b>10.0</b>	<b>10.9</b>	<b>11.6</b>

Note: Historical condensate figure of Sangu available from 2006. Sylhet available from August 1964

## Monthly Water Production by Fields in May 2021



**HYDROCARBON UNIT**  
Energy & Mineral Resources Division

Field Name	Jan	Feb	Mar	Apr	May	Jun	Jul	Aug	Sep	Oct	Nov	Dec	Total	2020	2,019	2,018
Bakhrabad	2,004	1,858	1,962	1,963	1,984								9,771	23,912	25,025	28,218
Daily Avg.	65	66	63	65	64	0	0	0	0	0	0	0	65	65	69	77
Bangura	7,749	7,839	9,410	10,605	11,230								46,833	42,021	38,297	43,917
Daily Avg.	250	280	304	354	362	0	0	0	0	0	0	0	310	115	105	120
Beani Bazar	16,789	15,152	16,866	16,447	16,749								82,003	176,527	130,468	109,854
Daily Avg.	542	541	544	548	540	0	0	0	0	0	0	0	543	482	357	301
Bibiyana	20,534	15,983	17,562	18,180	17,557								89,816	209,941	194,287	194,651
Daily Avg.	662	571	567	606	566	0	0	0	0	0	0	0	595	574	532	533
Chattak	0	0	0	0	0	0	0	0	0	0	0	0				
Daily Avg.	0	0	0	0	0	0	0	0	0	0	0	0	0	0	0	0
Fenchuganj	3,147	3,296	3,457	3,827	3,273								17,000	28,653	34,864	74,969
Daily Avg.	102	118	112	128	106	0	0	0	0	0	0	0	113	78	96	205
Feni	0	0	0	0	0	0	0	0	0	0	0	0	0	0	0	0
Daily Avg.	0	0	0	0	0	0	0	0	0	0	0	0	0	0	0	0
Habiganj	1,658	1,973	2,543	2,196	2,225								10,595	15,442	12,931	39,104
Daily Avg.	53	70	82	73	72	0	0	0	0	0	0	0	70	42	35	107
Jalalabad	5,501	4,885	5,179	4,973	5,022								25,560	72,877	57,962	55,950
Daily Avg.	177	174	167	166	162	0	0	0	0	0	0	0	169	199	159	153
Kailas Tila	0	15,554	20,803	22,327	18,165								76,849	100,033	68,693	43,233
Daily Avg.	0	556	671	744	586	0	0	0	0	0	0	0	509	273	188	118
Kamta	0	0	0	0	0	0	0	0	0	0	0	0				
Daily Avg.	0	0	0	0	0	0	0	0	0	0	0	0	0	0	0	0
Meghna	1,591	1,455	1,708	1,795	1,973								8,522	16,447	8,048	2,014
Daily Avg.	51	52	55	60	64	0	0	0	0	0	0	0	56	45	22	6
Moulavi Baza	237	214	279	229	182								1,141	6,968	5,447	13,965
Daily Avg.	8	8	9	8	6	0	0	0	0	0	0	0	8	19	15	38
Narshingdi	864	730	868	790	849								4,101	10,191	10,069	10,374
Daily Avg.	28	26	28	26	27	0	0	0	0	0	0	0	27	28	28	28
Rashidpur	21,105	19,642	20,439	19,973	19,930								101,089	144,432	158,452	137,406
Daily Avg.	681	702	659	666	643	0	0	0	0	0	0	0	669	395	434	376
Saldanadi	192	103	109	26	1								431	1,977	1,570	813
Daily Avg.	6	4	4	1	0	0	0	0	0	0	0	0	3	5	4	2

## Monthly Water Production by Fields in May 2021



**HYDROCARBON UNIT**  
Energy & Mineral Resources Division

Field Name	Jan	Feb	Mar	Apr	May	Jun	Jul	Aug	Sep	Oct	Nov	Dec	Total	2020	2,019	2,018
Sangu	0	0	0	0	0	0	0	0	0	0	0	0	0	0	0	0
Daily Avg.	0	0	0	0	0	0	0	0	0	0	0	0	0	0	0	0
Semutang	55	84	93	96	98								426	911	966	3,002
Daily Avg.	2	3	3	3	3	0	0	0	0	0	0	0	3	2	3	8
Shahbazpur	1,328	878	1,753	1,927	1,872								7,758	17,316	23,785	22,110
Daily Avg.	43	31	57	64	60	0	0	0	0	0	0	0	51	47	65	61
Srikail	1,565	1,402	1,181	1,159	1,292								6,599	10,292	19,783	18,432
Daily Avg.	50	50	38	39	42	0	0	0	0	0	0	0	44	28	54	50
Sundalpur	35	34	41	36	34								180	233	354	219
Daily Avg.	1	1	1	1	1	0	0	0	0	0	0	0	1	1	1	1
Sylhet	10,331	9,351	10,379	10,044	10,442								50,547	114,597	39,488	20,362
Daily Avg.	333	334	335	335	337	0	0	0	0	0	0	0	335	313	108	56
Titas	22,807	19,695	14,298	12,676	16,258								85,734	287,912	517,843	556,608
Daily Avg.	736	703	461	423	524	0	0	0	0	0	0	0	568	787	1,419	1,525
Begumganj	65	63	66	51	73								318	418	738	207
Daily Avg.	2	2	2	2	2	0	0	0	0	0	0	0	2	1	2	1
Rupganj	0	0	0	0	0	0	0	0	0	0	0	0	0	0	0	0
Daily Avg.	0	0	0	0	0	0	0	0	0	0	0	0	0	0	0	0
<b>Total (000'bl</b>	<b>117,558</b>	<b>120,191</b>	<b>128,996</b>	<b>129,320</b>	<b>129,209</b>	<b>0</b>	<b>0</b>	<b>0</b>	<b>0</b>	<b>0</b>	<b>0</b>	<b>0</b>	<b>625,274</b>	<b>1,281,101</b>	<b>1,349,070</b>	<b>1,375,408</b>
<b>Daily Avg. (000'bbl)</b>	<b>3,792</b>	<b>4,293</b>	<b>4,161</b>	<b>4,311</b>	<b>4,168</b>	<b>0</b>	<b>0</b>	<b>0</b>	<b>0</b>	<b>0</b>	<b>0</b>	<b>0</b>	<b>4,141</b>	<b>3,500</b>	<b>3,696</b>	<b>3,768</b>

## Conditions of Field and Well upto May 2021



Well	company	well type	Discovery	production start	Drilled depth (ft)	Pressure	Pressure type	Completion Zone
<b>Field : Bakharabad</b>								
BKB-1	BGFCL	Vertical	1969	June,1969	9309		FWHP	J
BKB-2	BGFCL	Directional	1969	October,1981	7496	248-274	FWHP	G
BKB-3	BGFCL	Directional	1969	April,1982	9339	356-412	FWHP	G
BKB-4	BGFCL	Directional	1969	June,1982	9430			D
BKB-5	BGFCL	Directional	1969	Sept,1982	9675	1555-1646	FWHP	B
BKB-6	BGFCL	Directional	1969	March,1989	8785			J
BKB-7	BGFCL	Directional	1969	July,1989	8605		FWHP	J
BKB-8	BGFCL	Directional	1969	Sept,1989	8840	490-523	FWHP	J
BKB-9	BGFCL	Vertical	1969	August,2013	8318	1005-1097	FWHP	G
BKB-10	BGFCL	Directional	1969	June,2016	9291	1010-1102	FWHP	K
<b>Field : Bangura</b>								
Bangura-1	Tullow		2004			887-940	FWHP	D
Bangura-2	Tullow		2004			587-685	FWHP	D/E
Bangura-3	Tullow		2004			719-789	FWHP	D
Bangura-6	Tullow		2004			708-780	FWHP	D
Bangura-5	Tullow		2004			579-621	FWHP	D
<b>Field : Beani Bazar</b>								
BB-1	SGFL		1981	July,1999	13480	580-620	SIWHP	Upper
BB-2	SGFL		1981	July,1999	12048	3210-3220	FWHP	Upper
<b>Field : Bibiyana</b>								
BY-1	Chevron		1998			1547-2007	FWHP	BB60, BB66
BY-2	Chevron		1998			1313-1390	FWHP	BB60, BH20A, BH20E
BY-3	Chevron		1998			1363-1403	FWHP	BB70
BY-4	Chevron		1998			1330-1390	FWHP	BH10
BY-5	Chevron		1998			1254-1299	FWHP	BH20A, BH20B, BH20C, BH20D
BY-6	Chevron		1998			1250-1486	FWHP	BB70
BY-7	Chevron		1998			1454-1566	FWHP	BH10
BY-8	Chevron		1998			1270-1297	FWHP	BH20A, BH20B
BY-9	Chevron		1998			1243-1273	FWHP	BH10
BY-10	Chevron		1998			1465-1533	FWHP	BB60
BY-11	Chevron		1998			1260-1284	FWHP	BH20A, BH20B
BY-12	Chevron		1998			1259-1332	FWHP	BB70
BY-13	Chevron		1998			1300-1356	FWHP	BH20A, BH20B
BY-14	Chevron		1998			1342-1632	FWHP	BH20A, BH20B
BY-15	Chevron		1998			2189-2240	FWHP	BB60
BY-16	Chevron		1998			1381-1644	FWHP	BH10, BH20D

## Conditions of Field and Well upto May 2021



Well	company	well type	Discovery	production start	Drilled depth (ft)	Pressure	Pressure type	Completion Zone
BY-17	<i>Chevron</i>		1998			2104-2229	<i>FWHP</i>	<i>BB60</i>
BY-18	<i>Chevron</i>		1998			1904-2218	<i>FWHP</i>	<i>BB60</i>
BY-19	<i>Chevron</i>		1998			1354-1477	<i>FWHP</i>	<i>BH10, BH20A</i>
BY-20	<i>Chevron</i>		1998			1248-1262	<i>FWHP</i>	<i>BH20D, BH20A, BH10</i>
BY-21	<i>Chevron</i>		1998			1333-1348	<i>FWHP</i>	<i>BH20A, BH20B, BH10</i>
BY-22	<i>Chevron</i>		1998			1552-1586	<i>FWHP</i>	<i>BB60</i>
BY-23	<i>Chevron</i>		1998			1739-2021	<i>FWHP</i>	<i>BH10, BH20A, BH20B, BH20C</i>
BY-24	<i>Chevron</i>		1998			1337-2091	<i>FWHP</i>	<i>BB60</i>
BY-25	<i>Chevron</i>		1998			1728-1857	<i>FWHP</i>	<i>BB60, BB66</i>
BY-26	<i>Chevron</i>		1998			1877-2094	<i>FWHP</i>	<i>BB60, BB64</i>
<b>Field : Chattak</b>								
Ch-1	SGFL		1959					
<b>Field : Fenchuganj</b>								
Fenchuganj-2	<i>BAPEX</i>		1988	<i>May, 2004</i>				
Fenchuganj-3	<i>BAPEX</i>		1988	<i>February, 2005</i>		2004-2010		<i>upper</i>
Fenchuganj-4	<i>BAPEX</i>		1988			2037-2065		
<b>Field : Feni</b>								
Feni-1	<i>BAPEX</i>		1981					
Feni-2	<i>BAPEX</i>		1981					
Feni-3	<i>BAPEX</i>		1981					
Feni-4	<i>BAPEX</i>		1981					
Feni-5	<i>BAPEX</i>		1981					
<b>Field : Habiganj</b>								
Hbj-1	<i>BGFCL</i>	<i>Vertical</i>	1963	<i>Feb, 1969</i>	11500		<i>FWHP</i>	<i>upper</i>
Hbj-2	<i>BGFCL</i>	<i>Vertical</i>	1963	<i>Feb, 1969</i>	5100		<i>FWHP</i>	<i>upper</i>
Hbj-3	<i>BGFCL</i>	<i>Vertical</i>	1963	<i>July, 1985</i>	5282	1478-1486	<i>FWHP</i>	<i>upper</i>
Hbj-4	<i>BGFCL</i>	<i>Vertical</i>	1963	<i>May, 1985</i>	5249	1460-1467	<i>FWHP</i>	<i>upper</i>
Hbj-5	<i>BGFCL</i>	<i>Directional</i>	1963	<i>Feb, 1992</i>	11552	1440-1446	<i>FWHP</i>	<i>upper</i>
Hbj-6	<i>BGFCL</i>	<i>Vertical</i>	1963	<i>Feb, 1992</i>	5515	1375-1379	<i>FWHP</i>	<i>upper</i>
Hbj-7	<i>BGFCL</i>	<i>Vertical</i>	1963	<i>April, 2000</i>	10236	1331-1139	<i>FWHP</i>	<i>upper</i>
Hbj-8	<i>BGFCL</i>	<i>Vertical</i>	1963	<i>May, 2000</i>	5280			<i>upper</i>
Hbj-9	<i>BGFCL</i>	<i>Vertical</i>	1963	<i>July, 1998</i>	5249			<i>upper</i>
Hbj-10	<i>BGFCL</i>	<i>Vertical</i>	1963	<i>Apr, 2000</i>	5133	1322-1331	<i>FWHP</i>	<i>upper</i>
Hbj-11	<i>BGFCL</i>	<i>Vertical</i>	1963	<i>February, 2008</i>	10499	1417-1423	<i>FWHP</i>	<i>upper</i>
<b>Field : Jalalabad</b>								
JB-1	<i>Chevron</i>		1989			1333-1436	<i>FWHP</i>	<i>BB60, BB50</i>

## Conditions of Field and Well upto May 2021



Well	company	well type	Discovery	production start	Drilled depth (ft)	Pressure	Pressure type	Completion Zone
JB-2	<i>Chevron</i>		<i>1989</i>			<i>1279-1294</i>	<i>FWHP</i>	<i>BB50, BB60</i>
JB-3	<i>Chevron</i>		<i>1989</i>			<i>1332-1375</i>	<i>FWHP</i>	<i>BB50, BB60</i>
JB-4	<i>Chevron</i>		<i>1989</i>			<i>1365-1425</i>	<i>FWHP</i>	<i>BB60</i>
JB-6	<i>Chevron</i>		<i>1989</i>			<i>1354-1362</i>	<i>FWHP</i>	<i>BB60, BB50</i>
JB-7	<i>Chevron</i>		<i>1989</i>			<i>1666-1679</i>	<i>FWHP</i>	<i>BB20</i>
JB-8	<i>Chevron</i>		<i>1989</i>			<i>1362-1370</i>	<i>FWHP</i>	<i>BB50, BB60</i>
<b>Field : Kailas Tila</b>								
KTL-1	<i>SGFL</i>		<i>1962</i>	<i>June, 1983</i>	<i>12417</i>	<i>0</i>	<i>SIWHP</i>	
KTL-2	<i>SGFL</i>		<i>1962</i>	<i>Feb, 1995</i>		<i>2225-2230</i>	<i>FWHP</i>	
KTL-3	<i>SGFL</i>		<i>1962</i>	<i>March, 1995</i>		<i>2470-2495</i>	<i>FWHP</i>	
KTL-4	<i>SGFL</i>		<i>1962</i>	<i>March, 1997</i>		<i>2360-2410</i>	<i>FWHP</i>	
KTL-5	<i>SGFL</i>		<i>1962</i>	<i>Sep, 2006</i>		<i>0</i>	<i>SIWHP</i>	
KTL-6	<i>SGFL</i>		<i>1962</i>	<i>Aug, 2007</i>		<i>2490-2495</i>	<i>FWHP</i>	
KTL-7	<i>SGFL</i>		<i>1962</i>			<i>0</i>	<i>SIWHP</i>	
<b>Field : Kamta</b>								
Kamta-1	<i>BGFCL</i>	<i>Vertical</i>	<i>1981</i>	<i>july,1982</i>	<i>11857</i>			<i>N/A</i>
<b>Field : Meghna</b>								
M-1	<i>BGFCL</i>	<i>Vertical</i>	<i>2004</i>	<i>july,1990</i>	<i>10069</i>	<i>1400-1450</i>	<i>FWHP</i>	<i>A,E,F &amp; G</i>
<b>Field : Moulavi Bazar</b>								
MV Bazar-2	<i>Chevron</i>		<i>1997</i>			<i>800-820</i>	<i>FWHP</i>	<i>BB70</i>
MV Bazar-3	<i>Chevron</i>		<i>1997</i>			<i>800-820</i>	<i>FWHP</i>	<i>BB70</i>
MV Bazar-4	<i>Chevron</i>		<i>1997</i>			<i>946-952</i>	<i>FWHP</i>	<i>BB20</i>
MV Bazar-5	<i>Chevron</i>		<i>1997</i>			<i>0</i>	<i>SIWHP</i>	<i>BB60</i>
MV Bazar-6	<i>Chevron</i>		<i>1997</i>			<i>822-890</i>	<i>FWHP</i>	<i>BB20</i>
MV Bazar-7	<i>Chevron</i>		<i>1997</i>			<i>844-901</i>	<i>FWHP/SIWHP</i>	<i>BB20</i>
MV Bazar-9	<i>Chevron</i>		<i>1997</i>			<i>0</i>	<i>SIWHP</i>	<i>BB46, BB48, BB60</i>
<b>Field : Narshingdi</b>								
N-1	<i>BGFCL</i>	<i>vertical</i>	<i>1990</i>	<i>october,1990</i>	<i>11320</i>	<i>1143-1197</i>	<i>FWHP</i>	<i>BL</i>
N-2	<i>BGFCL</i>	<i>vertical</i>	<i>1990</i>	<i>february,2007</i>	<i>10778</i>	<i>1015-1097</i>	<i>FWHP</i>	<i>BL</i>
<b>Field : Rashidpur</b>								
RP-1	<i>SGFL</i>		<i>1960</i>			<i>1290-1291</i>	<i>FWHP</i>	<i>Upper</i>
RP-2	<i>SGFL</i>		<i>1960</i>			<i>73</i>	<i>SIWHP</i>	<i>Lower</i>
RP-3	<i>SGFL</i>		<i>1960</i>			<i>1548-1568</i>	<i>FWHP</i>	<i>Lower</i>
RP-4	<i>SGFL</i>		<i>1960</i>			<i>1450-1655</i>	<i>FWHP</i>	<i>Lower</i>
RP-5	<i>SGFL</i>		<i>1960</i>			<i>2291</i>	<i>SIWHP</i>	<i>Lower</i>
RP-6	<i>SGFL</i>		<i>1960</i>			<i>870</i>	<i>SIWHP</i>	<i>A</i>

## Conditions of Field and Well upto May 2021



Well	company	well type	Discovery	production start	Drilled depth (ft)	Pressure	Pressure type	Completion Zone
RP-7	SGFL		1960			1308-1338	FWHP	Lower
RP-8	SGFL		1960			1600-1625	FWHP	Upper
<b>Field : Salda Nadi</b>								
Salda-1	BAPEX		1995					
Salda-2	BAPEX		1995					
Salda-3	BAPEX	Directional	1995	February, 2012		639-640, 698-700		Upper/Lower
Salda-4	BAPEX		1995					
<b>Field : Sangu</b>								
Sangu-1	BGFCL		1996					
Sangu-3z	BGFCL		1996					
Sangu-4	BGFCL		1996					
Sangu-5	BGFCL		1996					
Sangu-7	BGFCL		1996					
Sangu-8	BGFCL		1996					
Sangu-9	BGFCL		1996					
Sangu-10	BGFCL		1996					
Sangu-11	BGFCL		1996					
<b>Field : Semutang</b>								
Semutang-5	BAPEX		1967			280-508		Lower Zone
Semutang-6	BAPEX		1967			750-1302		
<b>Field : Shahbazpur</b>								
Shahbazpur-1	BAPEX		1995	May, 2009		2310-3543		Lower Zone
Shahbazpur-2	BAPEX		1995			3541-4133		Lower Zone
Shahbazpur-3	BAPEX		1995			4300		Upper Zone
Shahbazpur-4	BAPEX		1995			4250		Upper Zone
<b>Field : Srikail</b>								
Srikail-2	BAPEX		2012			990-1016		Upper & Lower D
Srikail-3	BAPEX		2012			981-1043		Upper & Lower D
Srikail-4	BAPEX		2012			1018-1068		Upper & Lower D
<b>Field : Sundalpur</b>								
Sundalpur -1	BAPEX		2011					
Sundalpur -2	BAPEX		2011					
<b>Field : Sylhet</b>								
Sylhet-3	SGFL		1955	Aug, 1958				
Sylhet-6	SGFL		1955	Aug, 1964		800-850	SIWHP	
Sylhet-7	SGFL		1955	Apr, 2005		1750-1820	FWHP	Lower Bokabil

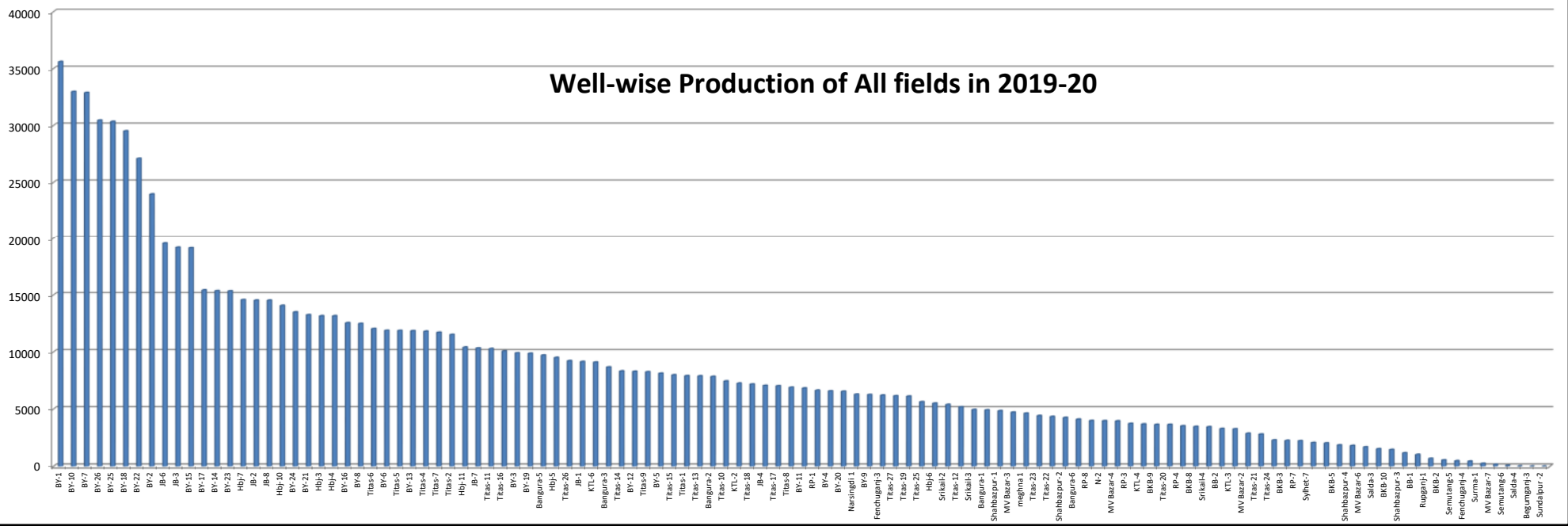


## Conditions of Field and Well upto May 2021

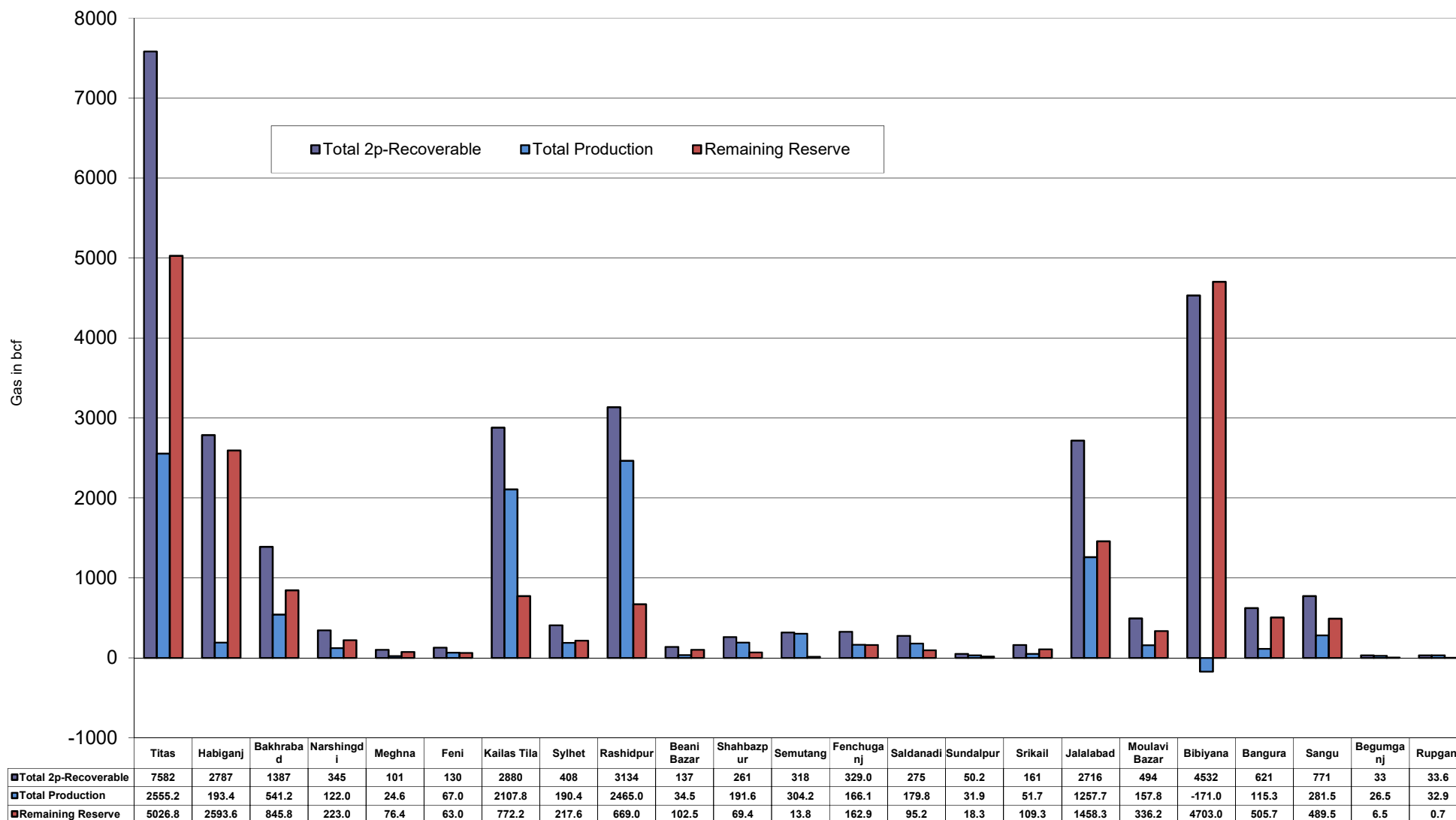


Well	company	well type	Discovery	production start	Drilled depth (ft)	Pressure	Pressure type	Completion Zone
Surma-1	SGFL		1955	June, 2010		230	SIWHP	C & D
<b>Field : Titas</b>								
Titas-1	BGFCL	vertical	1962	Mar,1969	12325	900-925	FWHP	A
Titas-2	BGFCL	vertical	1962	Fen,1969	10574	960-1020	FWHP	A
Titas-3	BGFCL	vertical	1962	sept,1969	9315	0	FWHP	A
Titas-4	BGFCL	vertical	1962	oct,1969	9350	1020-1070	FWHP	A
Titas-5	BGFCL	Directional	1962	jan,1981	10805	990-1035	FWHP	A
Titas-6	BGFCL	vertical	1962	Feb,1984	10072	1195-1225	FWHP	A
Titas-7	BGFCL	Directional	1962	July,1985	11006	1090-1160	FWHP	A
Titas-8	BGFCL	Directional	1962	sept,1985	11760	1000-1030	FWHP	B & C
Titas-9	BGFCL	Directional	1962	jan,1988	11893	1040-1085	FWHP	B & C
Titas-10	BGFCL	Directional	1962	may,1988	12139	1140-1180	FWHP	A
Titas-11	BGFCL	vertical	1962	Jun,1991	10462	1275-1310	FWHP	A
Titas-12	BGFCL	Directional	1962	July,2002	9873	1465-1500	FWHP	A
Titas-13	BGFCL	Directional	1962	June,2000	11487	1085-1115	FWHP	A
Titas-14	BGFCL	Directional	1962	June,2000	11004	1200-1250	FWHP	A
Titas-15	BGFCL	vertical	1962	may,2006	10446	0	FWHP	A
Titas-16	BGFCL	Directional	1962	dec,2005	11673	1205-1225	FWHP	A
Titas-17	BGFCL	vertical	1962	feb,2013	9424	1145-1175	FWHP	A
Titas-18	BGFCL	Directional	1962	august,2013	10932	1165-1190	FWHP	A
Titas-19	BGFCL	Directional	1962	may,2014	12730	1365-1415	FWHP	A
Titas-20	BGFCL	Directional	1962	oct,2013	11585	1370-1440	FWHP	A
Titas-21	BGFCL	Directional	1962	dec,2013	11631	1260-1285	FWHP	A
Titas-22	BGFCL	Directional	1962	march,2014	11926	990-1025	FWHP	A
Titas-27	BGFCL	Directional	1962	april,2014	10292	1245-1265	FWHP	A
Titas-23	BGFCL	Directional	1962	feb,2017	11988	2265-2340	FWHP	C
Titas-24	BGFCL	Directional	1962	oct,2016	12686	1120-1245	FWHP	C
Titas-25	BGFCL	vertical	1962	march,2016	11680	1300-1340	FWHP	A
Titas-26	BGFCL	Directional	1962	july,2016	12618	1840-1875	FWHP	C
<b>Field : Begumganj</b>								
Begumganj-3	BAPEX		1977					
<b>Field : Rupganj</b>								
Rupganj-1	BAPEX		2014			38-88		

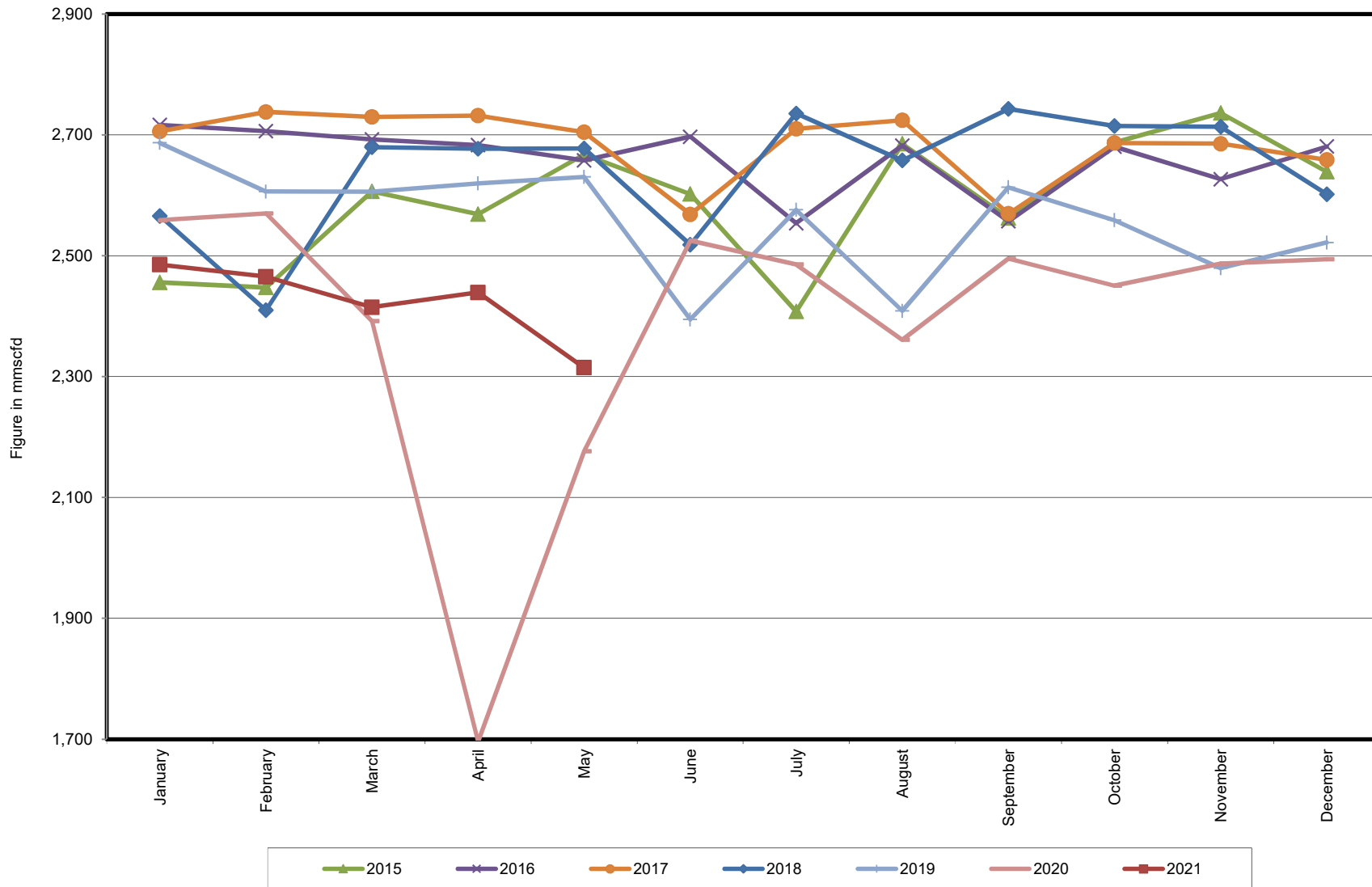
### Well-wise Production of All fields in 2019-20



## Reserve, Production and Remaining Reserve as of May 2021



## Daily Avg. Production From January 2015 to May 2021



## Field Wise Daily Avg. Production May 2021

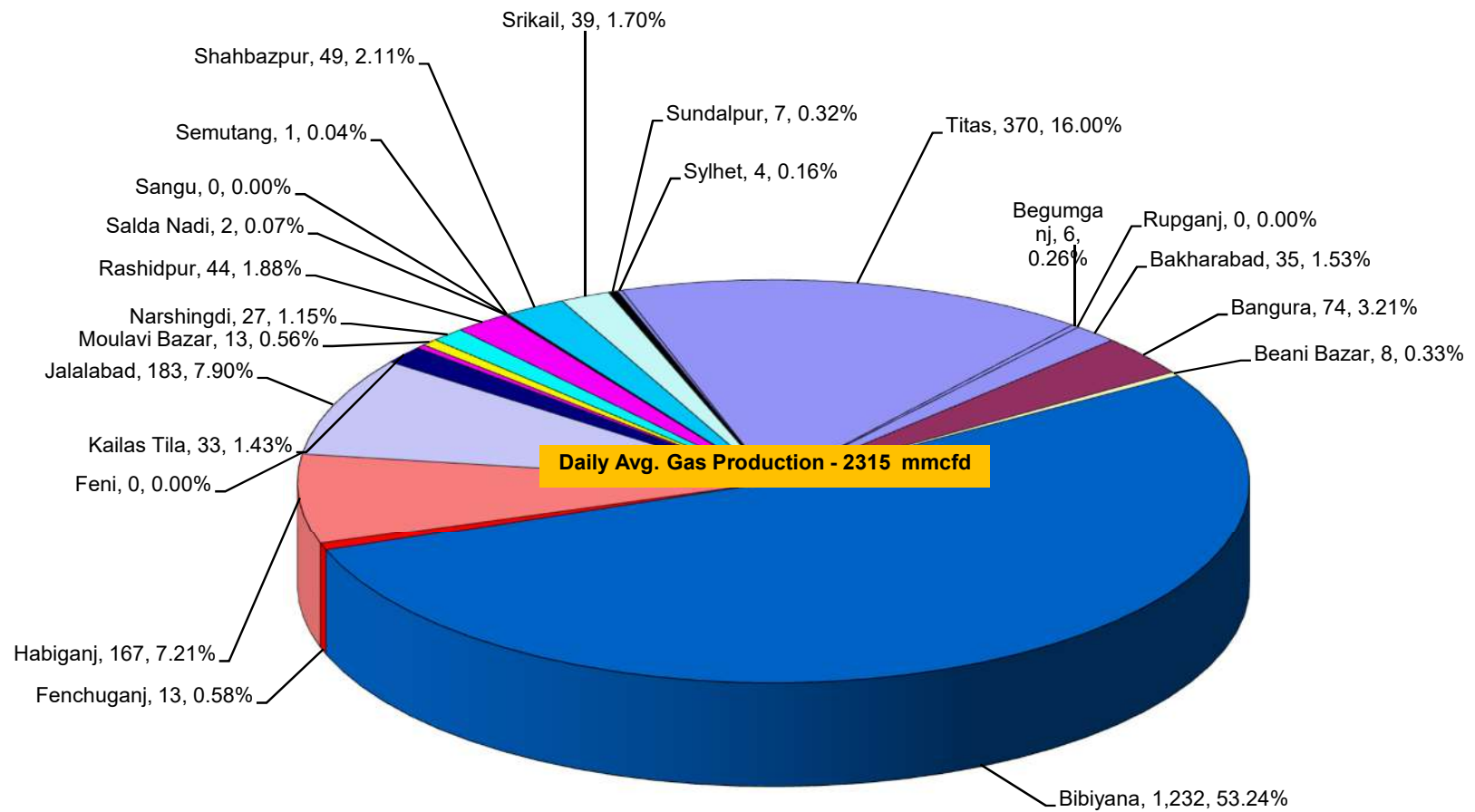
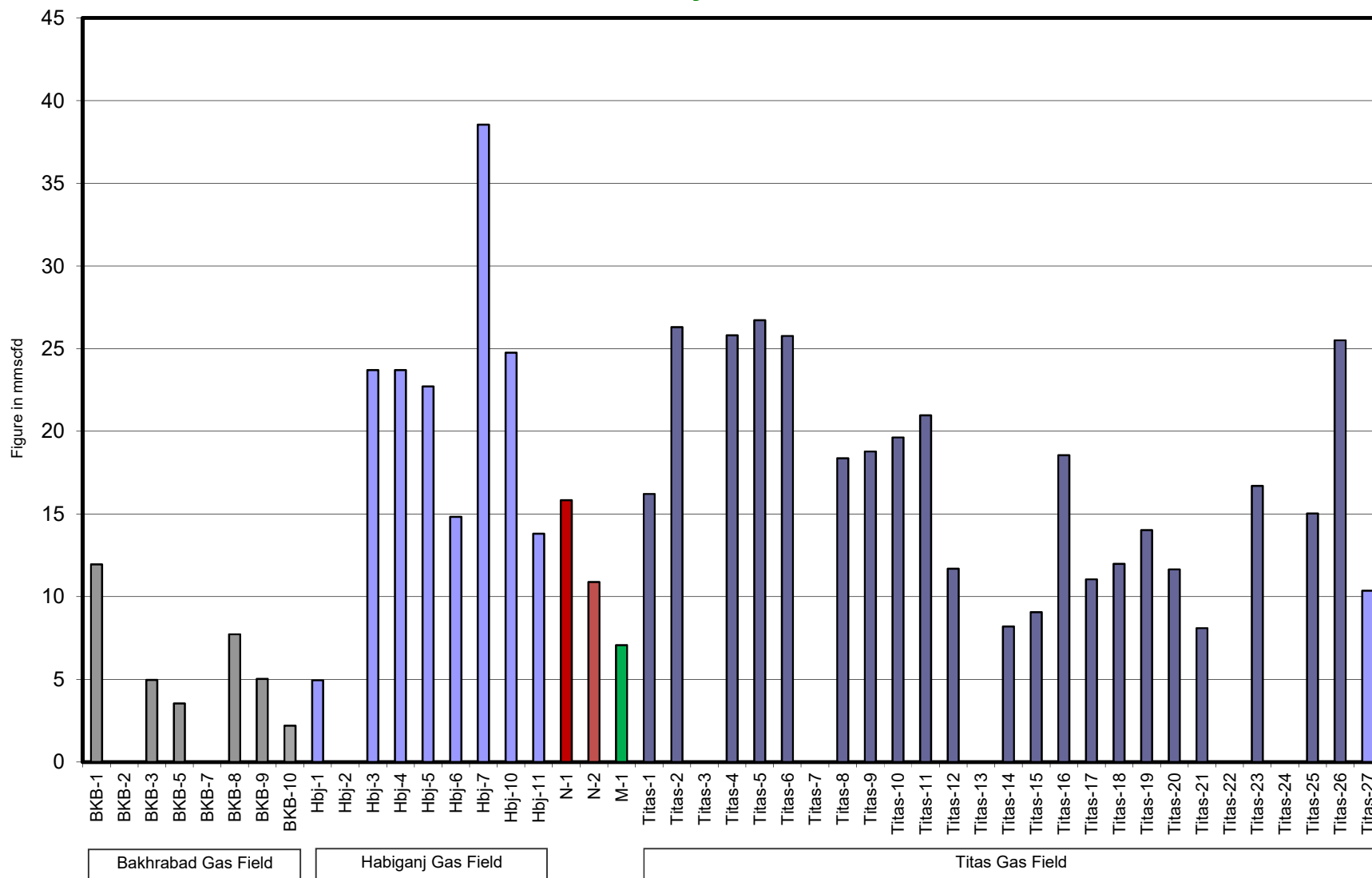


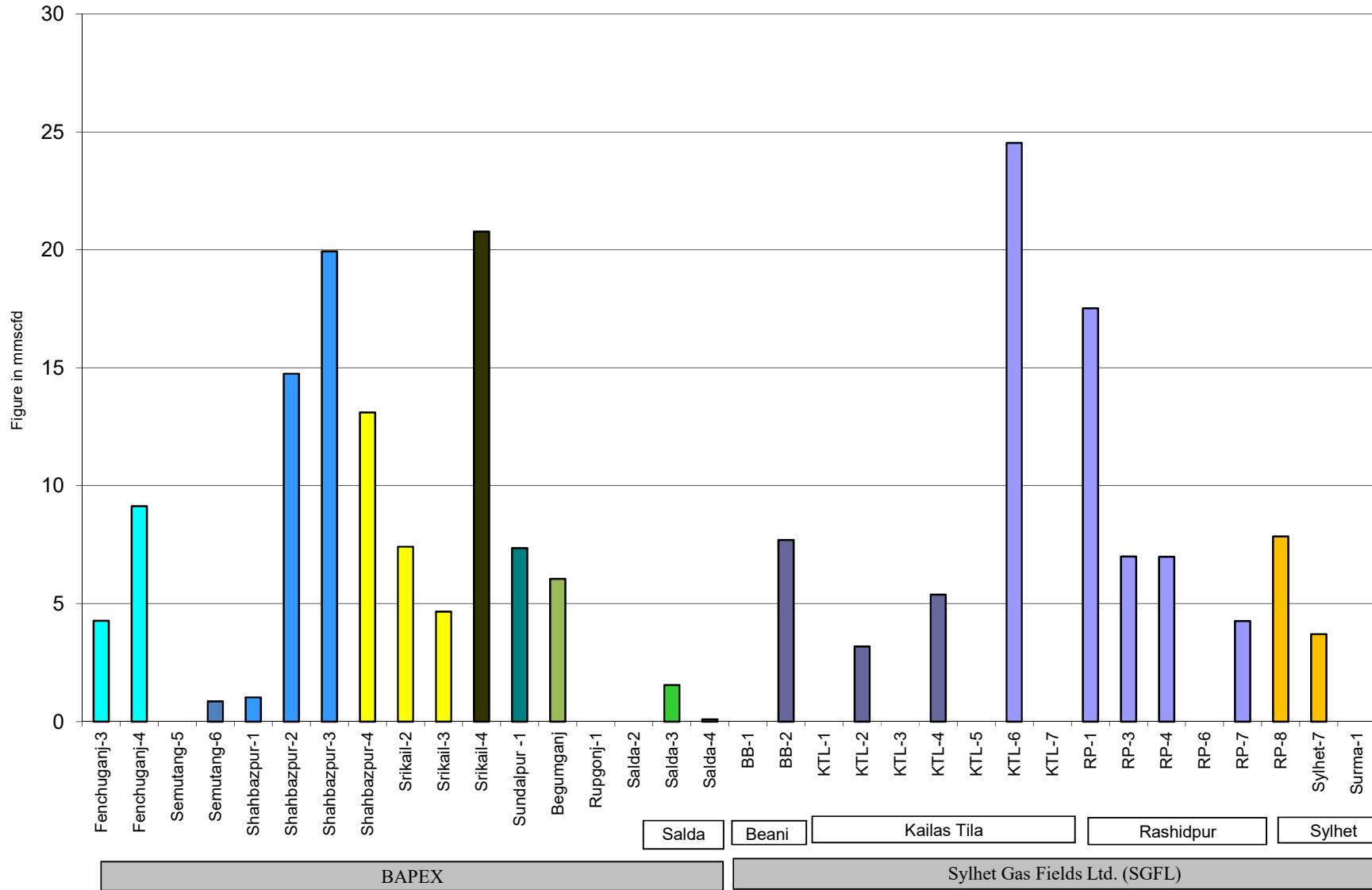
Figure in mmcfd and % of total production

## Wellwise Daily Avg. Production- BGFCL May 2021

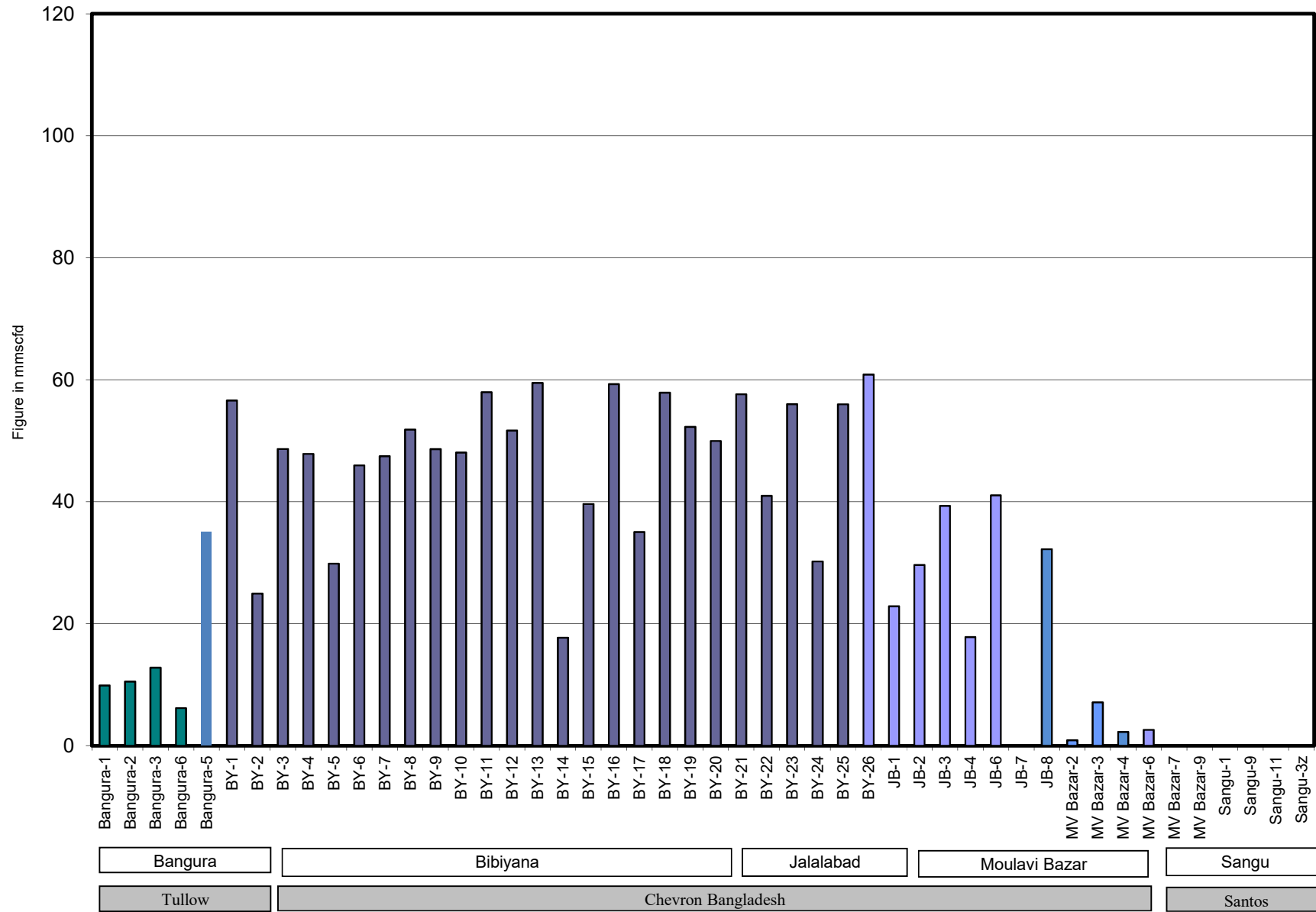


Bangladesh Gas Fields Co. Ltd. (BGFCL)

# Wellwise Daily Avg. Production- Bapex and SGFL May 2021

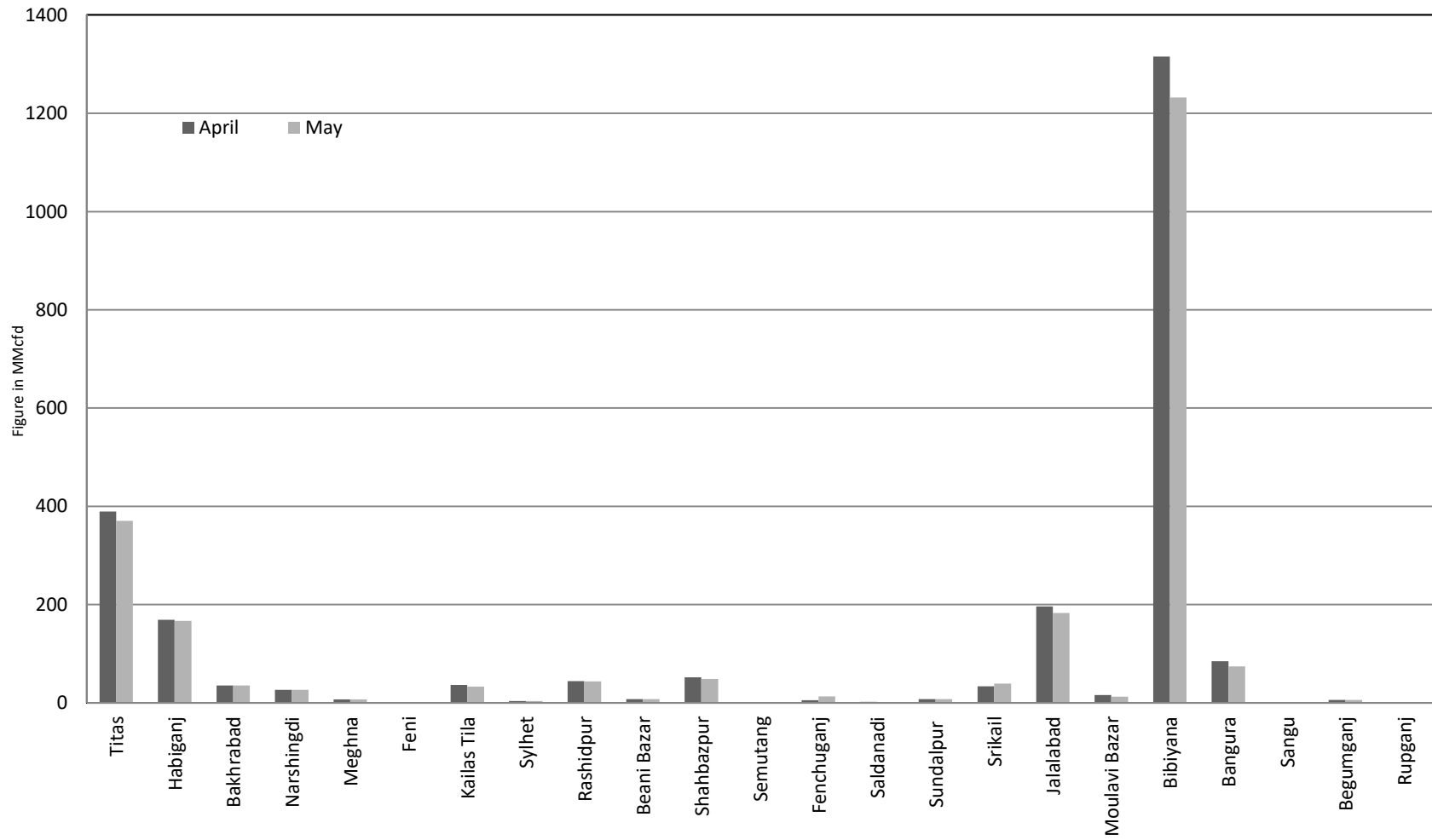


## Wellwise Daily Avg. Production- IOC and JVA May 2021

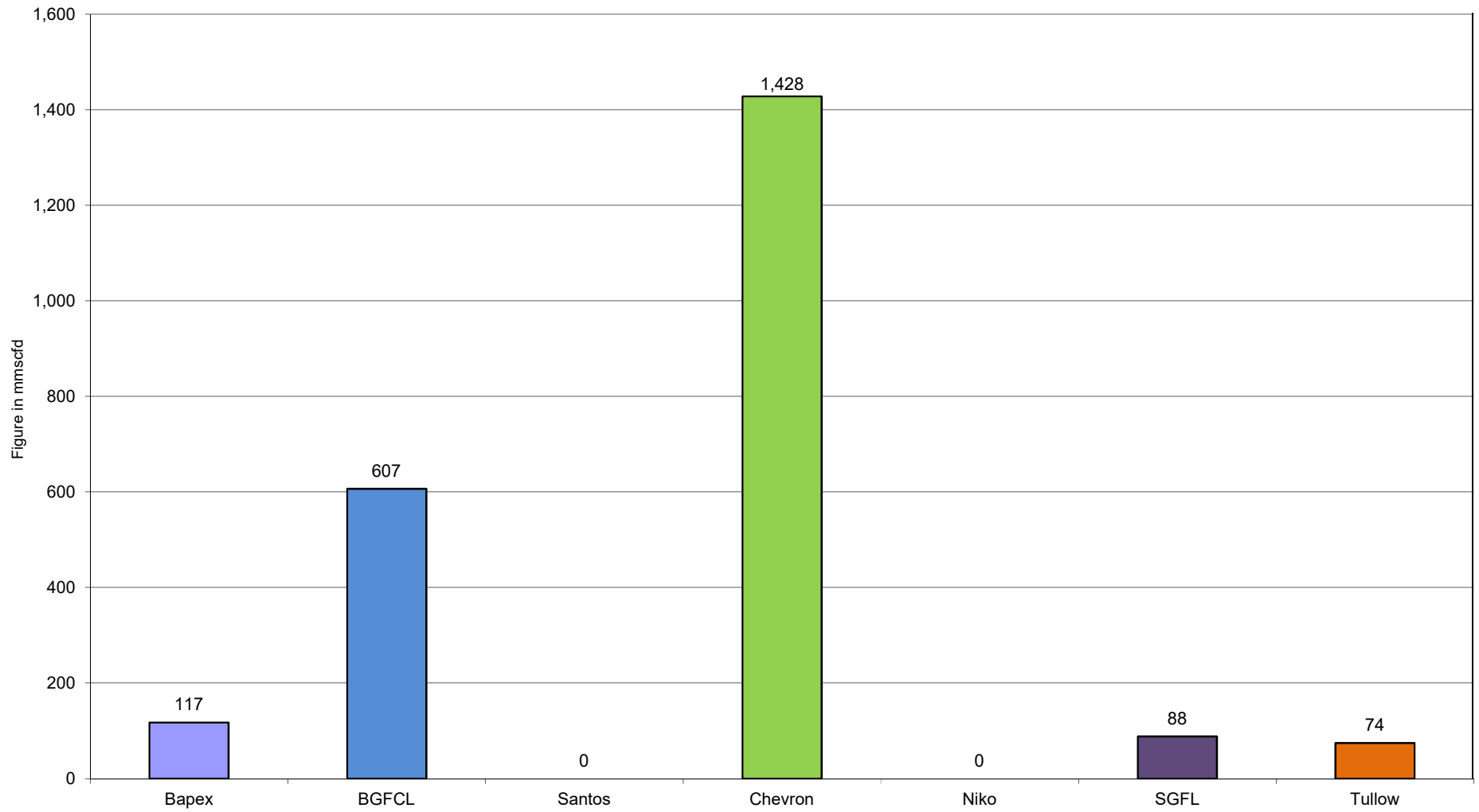




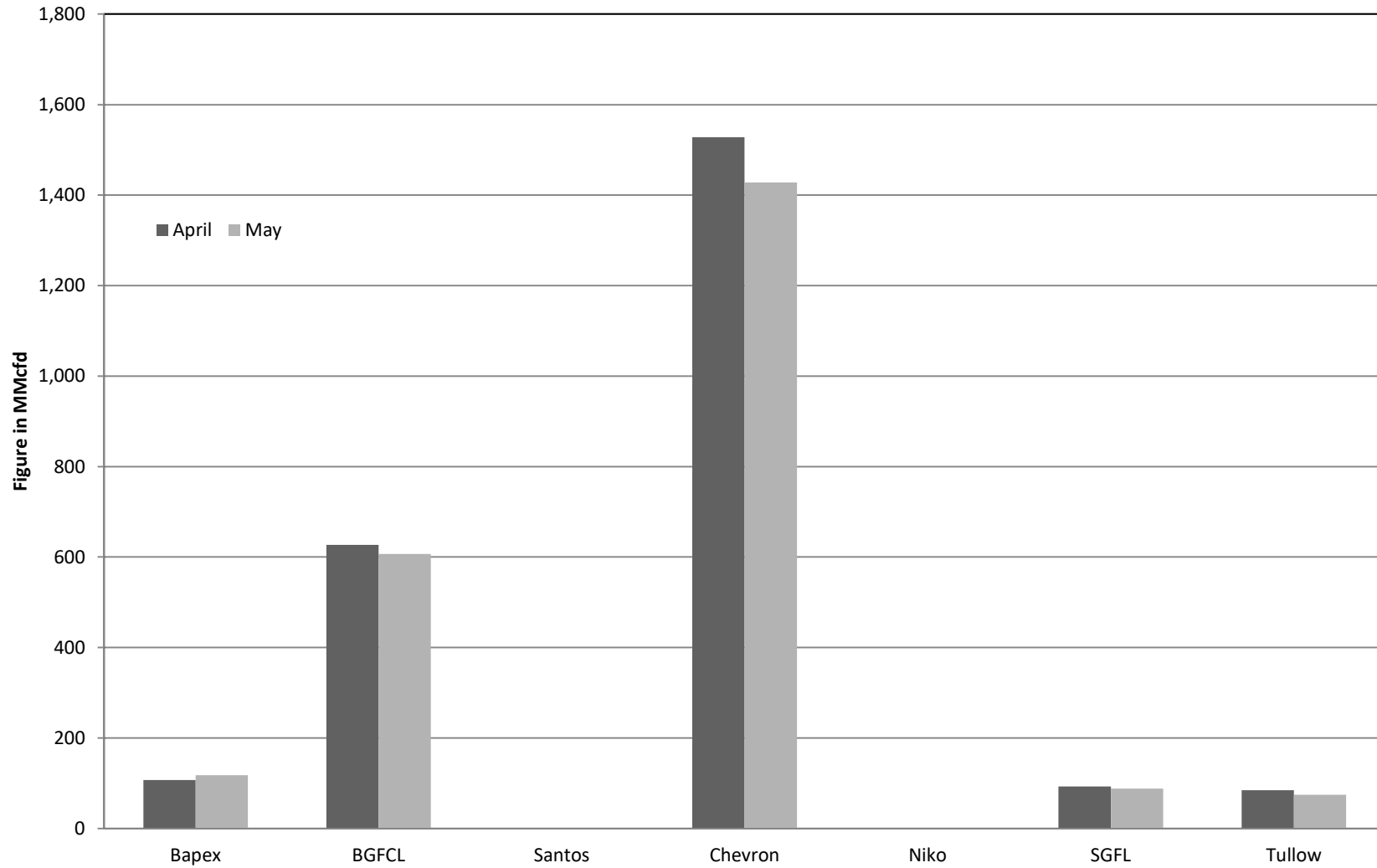
### Comparison of fieldwise daily avg. Gas production between April 2021 & May 2021



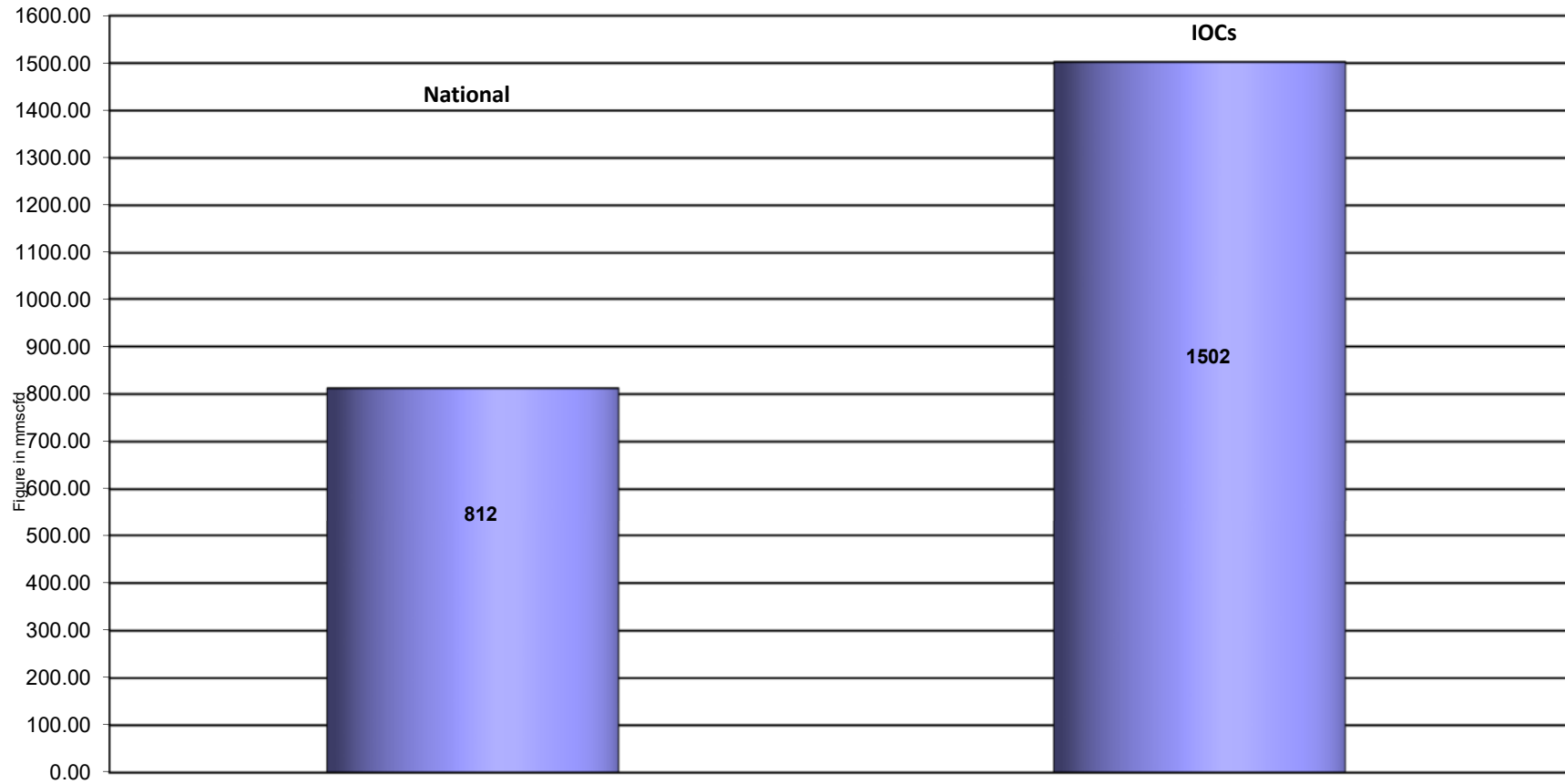
## Daily Avg. Production by Operators May 2021



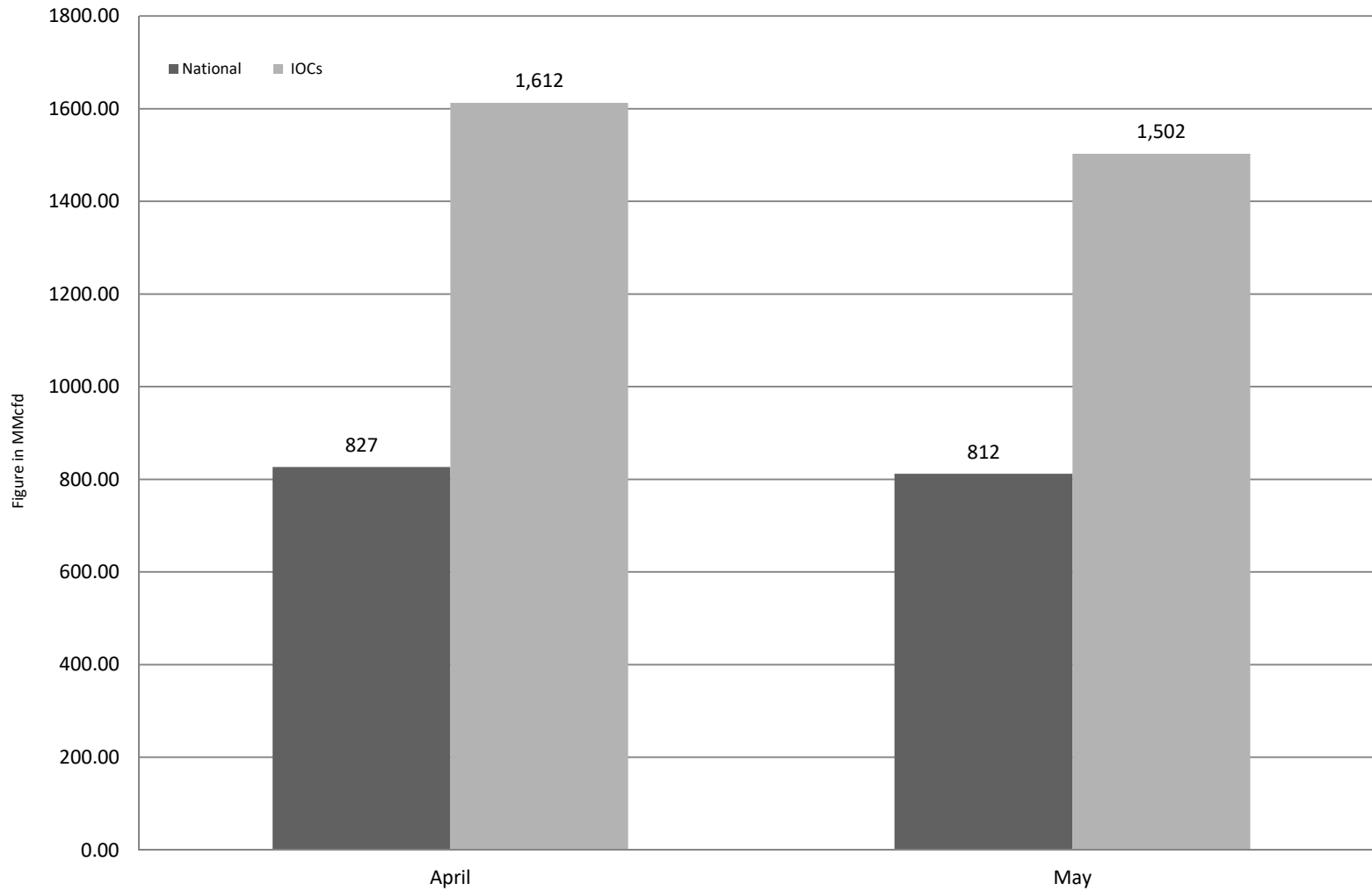
### Comparison of operatorwise daily avg. Gas production between April 2021 & May 2021



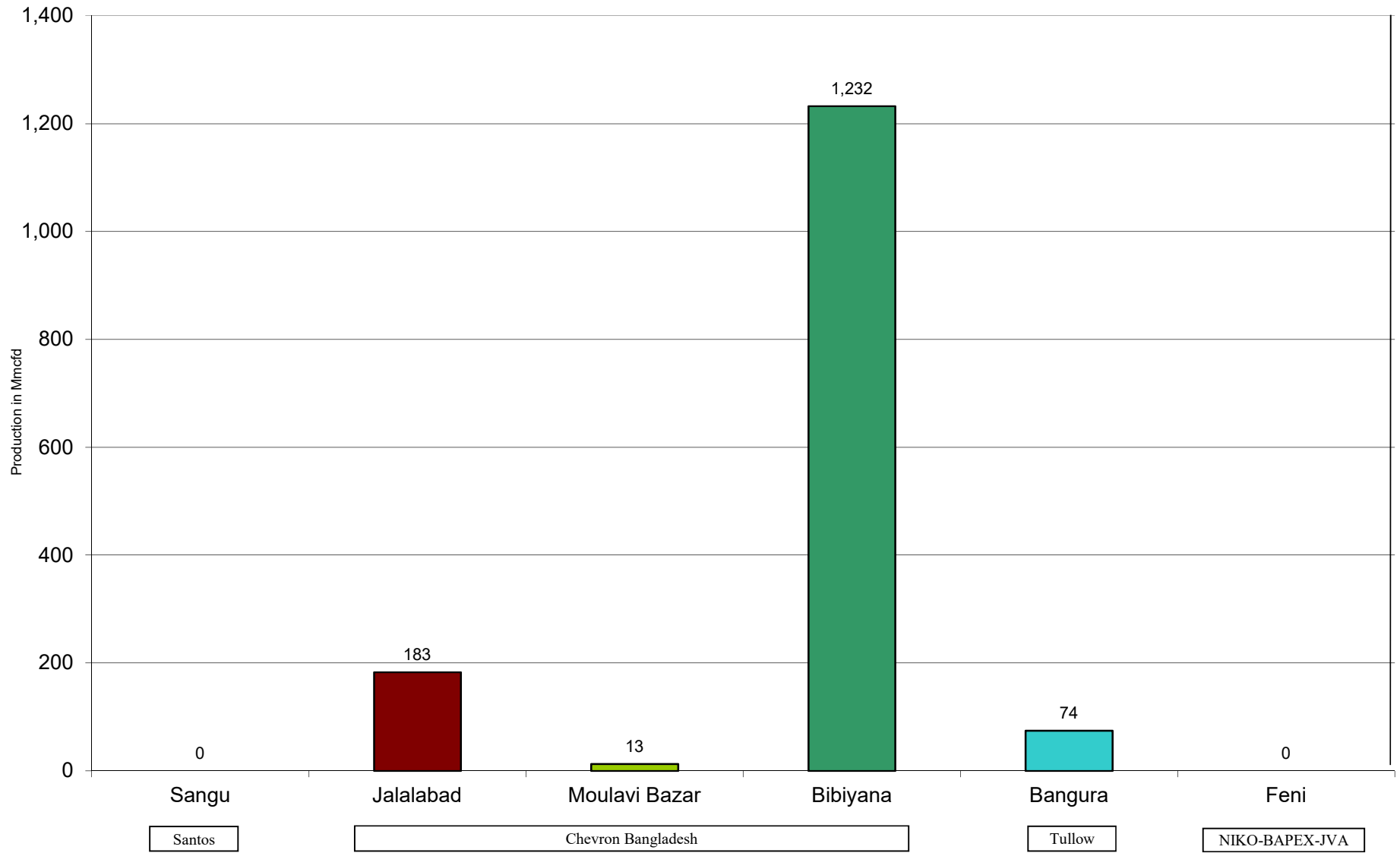
## Daily Avg. Production - National Vs. IOCs May 2021



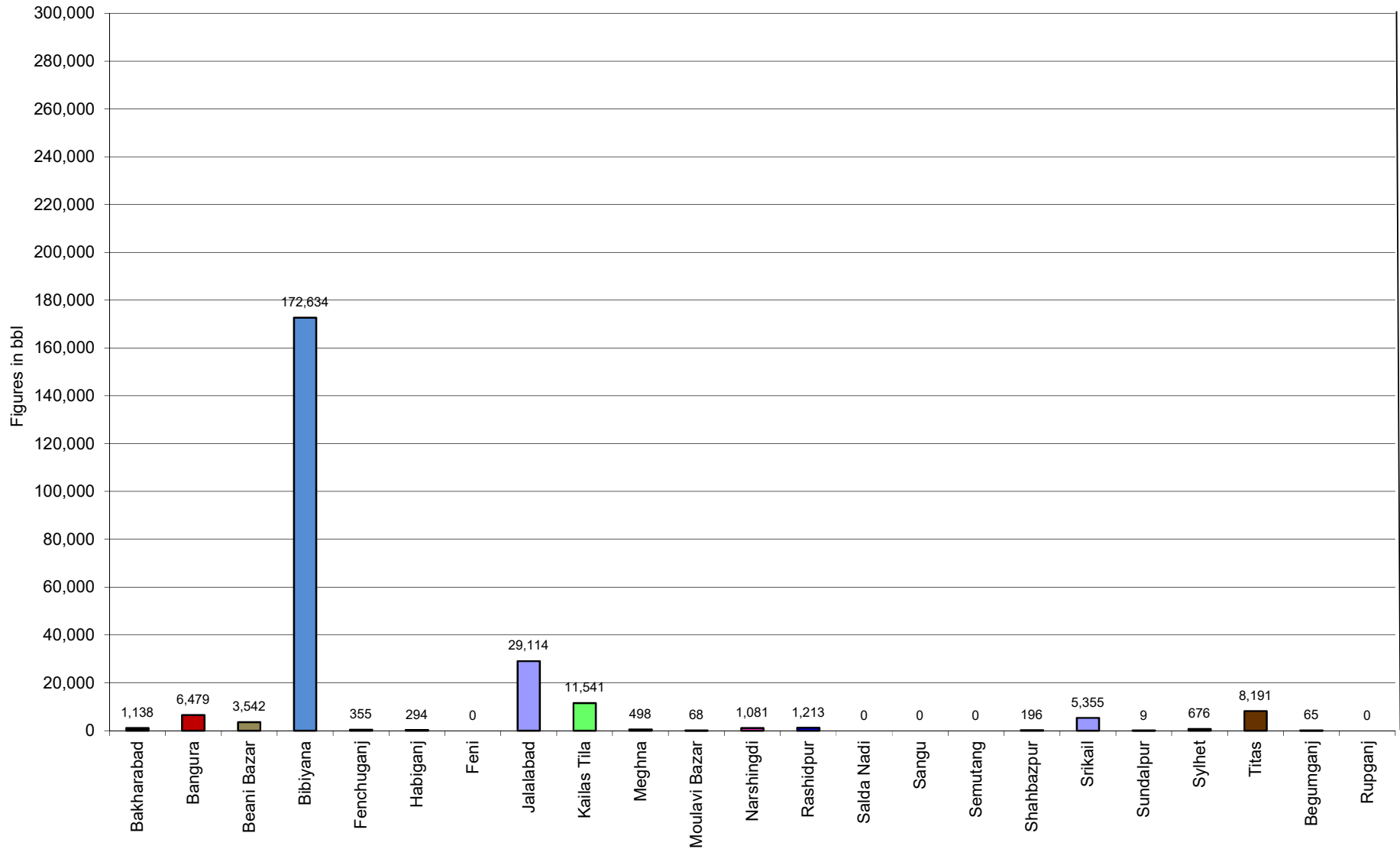
### Comparison of daily avg. Gas production - National vs IOC's between April 2021 & May 2021



## Daily Avg. Production - IOC and JVA May 2021



# Monthly Condensate Production May 2021



## Field wise Coal Reserve in Bangladesh

SI No.	Coal Basins	Proved (Mt)	Indicated (Mt)	Inferred (Mt)	Total (Mt)
1	Barapukuria	114.32	211.33	21.06+(43-64)*	346.71+(43-64)*
2	Phulbari	288	226	58	572
3	Khalashpir	-	297.57	225.92	523.49
4	Jamalganj	-	-	1053.9	1053.9
5	Dighipara	-	105	495	600
	<b>Total</b>	<b>402.32</b>	<b>839.9</b>	<b>1896.88-1917.88</b>	<b>3139.10-3160.10</b>

*\*Resources of VI Seam in second syncline are towards SW of main basin, after Wardell Armstrong*

*NOTE: Reserve Figure based on Coal Sector Development Strategy (Final), HCU, PwC*



## Summary of Reserve and Production of Barapukuria Coal Mine As of May 2021

<b>Coal Initially Place (Proven + Probable)</b>	<b>346,710 kT</b>	<b>346.71 MT</b>
<b>Total Reserve of Seam VI</b>	<b>285,410 kT</b>	<b>285.41 MT</b>
<b>Recoverable from Seam VI Central part(Proven + Probable)</b>	<b>16,540 kT*</b>	<b>16.54 MT</b>
<b>Coal Production in May 2021</b>	<b>131.54 kT</b>	<b>0.13 MT</b>
<b>Cumulative Production as of May 2021</b>	<b>12,156 kT</b>	<b>12.16 MT</b>
<b>Remaining Reserve</b>	<b>4,384 kT</b>	<b>4.38 MT</b>

*NOTE: Reserve figure based on Mines and Minerals Development Report ,HCU PwC*

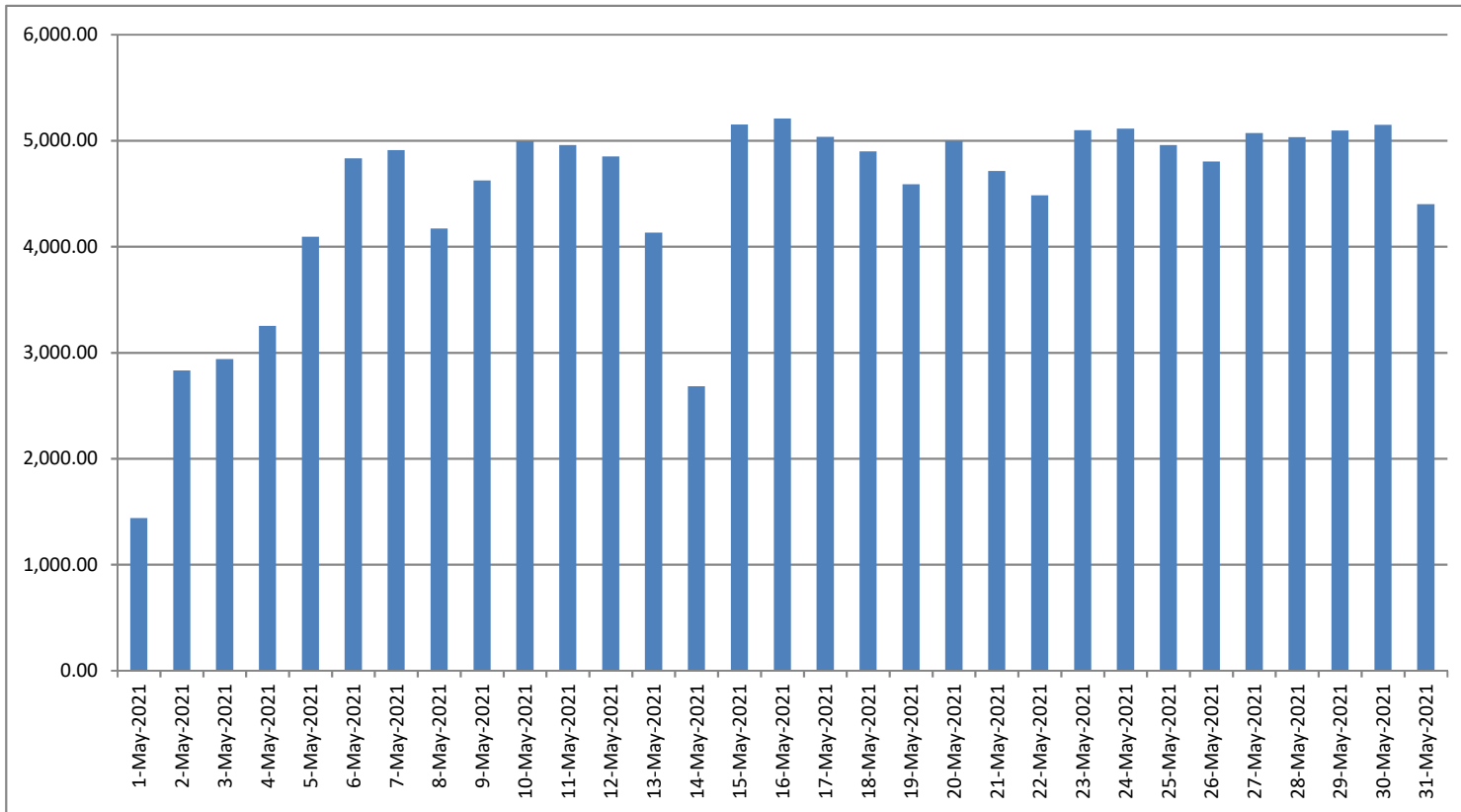
\*Figure from BCMCL, M/S Wardell Armstrong. According to Mines and Minerals Development Report ,HCU, PwC this figure is 64.8 Mt

**Barapukuria Coal Mine-MPM and P Contract (BCMCL)**  
**Measurement Record: Surface Belt Weigher**  
**Measurement Period: May 2021**

Day wise data	Consortium Daily Output (ton)	Consortium Cumulative Total	BCMCL Daily Output	BCMCL Cumulative Total	Remarks
1-May-2021	1,438.59	1,438.59	1,438.59	1,438.59	
2-May-2021	2,832.85	4,271.44	2,832.85	4,271.44	
3-May-2021	2,939.69	7,211.13	2,939.69	7,211.13	
4-May-2021	3,253.41	10,464.54	3,253.41	10,464.54	
5-May-2021	4,092.34	14,556.88	4,092.34	14,556.88	
6-May-2021	4,833.50	19,390.38	4,833.50	19,390.38	
7-May-2021	4,909.57	24,299.95	4,909.57	24,299.95	
8-May-2021	4,172.38	28,472.33	4,172.38	28,472.33	
9-May-2021	4,624.26	33,096.59	4,624.26	33,096.59	
10-May-2021	4,993.00	38,089.59	4,993.00	38,089.59	
11-May-2021	4,958.89	43,048.48	4,958.89	43,048.48	
12-May-2021	4,851.50	47,899.98	4,851.50	47,899.98	
13-May-2021	4,132.50	52,032.48	4,132.50	52,032.48	
14-May-2021	2,683.57	54,716.05	2,683.57	54,716.05	
15-May-2021	5,151.20	59,867.25	5,151.20	59,867.25	
16-May-2021	5,209.44	65,076.69	5,209.44	65,076.69	
17-May-2021	5,034.81	70,111.50	5,034.81	70,111.50	
18-May-2021	4,897.32	75,008.82	4,897.32	75,008.82	
19-May-2021	4,589.01	79,597.83	4,589.01	79,597.83	
20-May-2021	4,998.44	84,596.27	4,998.44	84,596.27	
21-May-2021	4,712.45	89,308.72	4,712.45	89,308.72	
22-May-2021	4,483.24	93,791.96	4,483.24	93,791.96	
23-May-2021	5,099.56	98,891.52	5,099.56	98,891.52	
24-May-2021	5,112.57	104,004.09	5,112.57	104,004.09	
25-May-2021	4,958.57	108,962.66	4,958.57	108,962.66	
26-May-2021	4,802.20	113,764.86	4,802.20	113,764.86	
27-May-2021	5,070.32	118,835.18	5,070.32	118,835.18	
28-May-2021	5,031.44	123,866.62	5,031.44	123,866.62	
29-May-2021	5,095.63	128,962.25	5,095.63	128,962.25	
30-May-2021	5,147.81	134,110.06	5,147.81	134,110.06	
31-May-2021	4,401.82	138,511.88	4,401.82	138,511.88	

less Difference in Water Content:	6969.97
Less Out of Seam dilution:	0
Coal adjustment for scale recalibration	0
<b>Output (tons) measured by Belt Weigher:</b>	<b>131,541.91</b>
Tonnes mined in DARR	0
Net Output after removing DARR	131,541.91

## Barapukuria Coal Mine Daywise Data Graph for May 2021



আসুন, যানবাহনসমূহকে অটোগ্যাসে রূপান্তর করি...

জাতীয় সম্পদ প্রাকৃতিক গ্যাস সাশ্রয় করি...

facebook

"Energy misused, cannot be excused"

আমাদের ঘরে যদি এখনো কয়েল স্টার্টার যুক্ত টিউবলাইট থেকে থাকে, আসুন আজই LED টিউবলাইট দ্বারা প্রতিস্থাপন করি।

HYDROCARBON UNIT ON FACEBOOK

“আসুন আমাদের জাতীয় সম্পদ প্রাকৃতিক গ্যাস সাশ্রয় করি”

১। **LPG** ব্যবহার করুন..

অবৈধ গ্যাস সংযোগ থেকে বিরত থাকুন

২। **CNG** নয়, অকটেন দিয়ে গাড়ি চালান...

গাড়ির ইঞ্জিনের আয়ুষ্কাল বাড়ান

চলুন আজই যানবাহনসমূহ AUTO GAS (LPG) এ রূপান্তর করি...

- \* CNG এর তুলনায় LPG কনভারশনে ৫০% কম খরচ হয়
- \* ৩-৫ মিনিটে ট্যাংকে ফুয়েল ভর্তি হয়, লম্বা লাইনে দাঁড়িয়ে অপেক্ষা করার প্রয়োজন পরে না
- \* CNG এর তুলনায় সিলিন্ডারে জায়গা, ওজন ও প্রেশার কম দরকার
- \* রক্ষণাবেক্ষণের খরচ কম
- \* পেট্রলের তুলনায় AUTO GAS -এ খরচ প্রায় ৫০% কম
- \* গ্যাসোলিন ও ডিজেলের তুলনায় নিঃসরণ কম

# Hydrocarbon Unit

Energy & Mineral Resources Division  
Ministry of Power, Energy & Mineral Resources  
153, Pioneer Road  
Segunbagicha, Dhaka-1000  
www.hcuro.gov.bd