

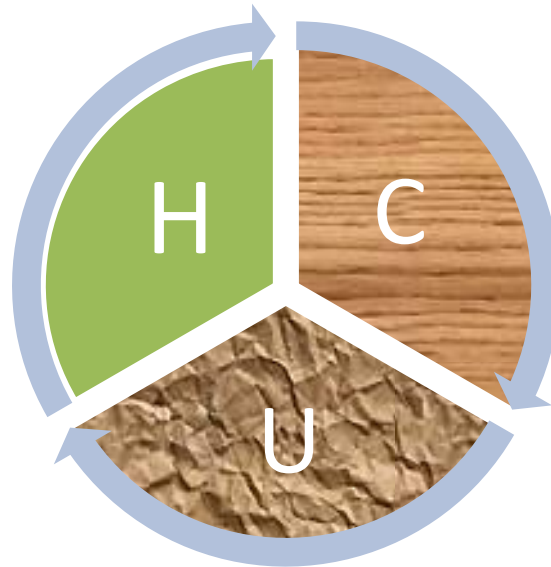


HYDROCARBON UNIT

Energy and Mineral Resources Division

Gas Production & Depletion And Coal Production

June 2019



Gas Reserve & Production at a glance

Gas Initially in Place (GIIP)	:	35,796.19 Bcf
Recoverable (2P)	:	28,685.40 Bcf
Cumulative Production as of June 2019	:	16,928.12 Bcf
Remaining Reserve up to June 2019	:	11,757.28 Bcf
Gas Production in June 2019	:	71.84 Bcf
National Oil Company (NOC's) production in June 2019	:	28.77 Bcf
International Oil Company (IOC's) production in June 2019	:	50.27 Bcf
No. of National Oil Company (NOC's) in June 2019	:	3 (BGFCL, BAPEX, SGFL)
No. of International Oil Company (IOC's) in June 2019	:	2 (Chevron, Tullow)
Total gas fields of National Oil Company(NOC) in June 2019	:	21
Total gas fields of International Oil Company(IOC) in June 2019	:	5
Total gas wells of National Oil Company(NOC) in June 2019	:	116
Total gas wells of International Oil Company(IOC) in June 2019	:	60
No. of National Oil Company (NOC's) gas production well in June 2019	:	70
No. of International Oil Company (IOC's) gas production well in June 2019	:	42
No. of National Oil company(NOC's) suspended well in June 2019	:	46
No. of International Oil company(IOC's) suspended well in June 2019	:	18
Total LNG Import in June 2019	:	16.56 Bcf
Cumulative LNG Import from August 2018	:	115.89 Bcf

Executive Summary of June 2019

Total gas and condensate Production in June 2019 were 71.84 Bcf and 281,125.77 Bbl. In the previous month i.e. May 2019, gas and condensate production was 81.55 Bcf and 339,517 Bbl and in the same month of the previous year i.e. June 2018, total gas and condensate production was 75.55 Bcf and 319,587.56 Bbl respectively. The National Oil Companies (NOC's) and International Oil Companies (IOC's) Produced 28.77 Bcf and 43.07 Bcf gas respectively in June 2019. During the previous month i.e. May 2019 gas production by the National Oil Companies (NOC's) and International Oil Companies (IOC's) were 31.27 Bcf and 50.27 Bcf respectively. In the month of June 2019 Bibiyana gas field Produced 34.31 Bcf gas and it ranked top among the gas producers. It is noted that Bibiyana gas field Produced 40.49 Bcf in May 2019. Average production from the field during the month of June 2019 was 1144 Mmcfd.

During the month of June 2019 total production of condensate was 281,125.77 Bbl compared to 339,517 Bbl in the previous month i.e. May 2019. Bibiyana gas field Produced 213,400 Bbl condensate and ranked top while Jalalabad ranked 2nd by producing 23,241.41 Bbl.

In the month of June 2019 total coal production was 129,341.70 Ton. In the previous month i.e. May 2019 total coal production was 136,004.31 Ton. It indicates that 6,662.61 Ton less Coal was produced compared to previous month.

Total LNG import in June 2019 was 16.56 Bcf. As a result, cumulative LNG import stands on 115.89 Bcf from August 2018.

Table of Contents

Gas Report	Page No.
Summary	1
summary of Reserve and Production	2
Production comparison between May 2019 & June 2019	3
Production per well & production reserve ratio	4
Monthly Production by Fields & Wells up to June 2019	5-12
Monthly Condensate Production by Fields up to June 2019	13-14
Monthly Water Production by Fields from June 2019	15-16
Conditions of Field and Well up to June 2019	17-21
Chart	
Well-wise Production of All fields in 2017-18	22
Reserve, Production and Remaining Reserve as of June 2019	23
Daily Average Gas Production from January 2012 to June 2019	24
Field wise Daily Average Production as of June 2019	25
Well wise Daily Average Production-BGFCL as of June 2019	26
Well wise Daily Average Production-BAPEX and SGFL, June 2019	27
Well wise Daily Average Production-IOC and JVA, June 2019	28
Comparison of Field wise Daily Avg Gas Production between May 19 & June 19	29
Daily Average Production by Operator, June 2019	30
Comparison of Operator wise daily avg Production between May 19 & June 19	31
Daily Average Production – National vs IOC's, June 2019	32
Comparison of daily avg Gas Production- National vs IOC's between May 19 & June 19	33
Daily Average Production IOC's and JVA, June 2019	34
Monthly Condensate Production, June 2019	35
Coal Report	
Summary	36-37
Barapukuria Coal Mine-MPM and P Contract (BCMCL)	38
Barapukuria Coal Mine Day wise Data Graph for June 2019	39

Summary of Reserve, Production & Import As of 30 June 2019

Gas Initially Place (Proven + Probable)	35,796.19 Bcf	35.80 Tcf
Recoverable (Proven + Probable)	28,685.40 Bcf	28.69 Tcf
Gas Production in June 2019	71.84 Bcf	0.07 Tcf
Cumulative Gas Production as of June 2019	16,928.12 Bcf	16.93 Tcf
Remaining Reserve	11,757.28 Bcf	11.76 Tcf

NOTE: Reserve figure based on "Updated Report on Bangladesh Gas Reserve Estimation 2010", prepared by Gustavson Associates LLC, USA

Total LNG Import in June 2019	16.56 Bcf	0.02 Tcf
Cumulative LNG Import from August 2018	115.89 Bcf	0.12 Tcf

Summary of Reserve and Production

(As of June 2019)

Gas Bcf



Sl No.	Field	2P	GIIP	2P Reserve	Gas Prod. In June '19	Cum. Gas Production	Remaining Reserve	Cum. Condensate Production
1	Begumganj		47.0	33.0	0.2	2.6	30.4	1
2	Shahbazpur		415.0	261.0	1.9	67.8	193.2	7
3	Semutang		654.0	318.0	0.0	13.2	304.8	5
4	Fenchuganj		483.0	329.0	0.2	159.5	169.5	116
5	Salda Nadi		393.0	275.0	0.1	91.9	183.1	58
6	Srikail*		230.0	161.0	1.0	87.5	73.5	146
7	Sundalpur *		62.2	50.2	0.2	13.3	36.9	0
8	Rupganj		48.0	33.6	0.0	0.7	32.9	1
Bapex			2,332.2	1,460.8	3.5	436.4	1,024.4	334
9	Meghna		122.0	101.0	0.3	70.8	30.2	111
10	Narshingdi		405.0	345.0	0.8	204.9	140.1	425
11	Kamta		72.0	50.0	0.0	21.1	28.9	4
12	Habiganj		3,981.0	2,787.0	5.8	2,466.0	321.0	134
13	Bakhrabad		1,825.0	1,387.0	1.2	817.9	569.1	1,023
14	Titas		9,039.0	7,582.0	13.3	4,740.0	2,842.0	5,296
BGFCL			15,444.0	12,252.0	21.3	8,320.8	3,931.2	6,993
15	Sangu		976.0	771.0	0.0	489.5	281.5	37
Santos/Cairn			976.0	771.0	0.0	489.5	281.5	37
16	Bibiyana		5,321.0	4,532.0	34.3	3,821.4	710.6	22,724
17	Moulavi Bazar		630.0	494.0	0.3	325.1	168.9	118
18	Jalalabad**		1,346.0	1,346.0	6.0	1,317.4	28.6	10,294
Chevron			7,297.0	6,372.0	40.6	5,464.0	908.0	33,136
19	Feni		185.0	130.0	0.0	63.0	67.0	110
Niko			185.0	129.6		63.0	66.6	110
20	Kailas Tila		3,463.0	2,880.0	1.8	737.9	2,142.1	7,878
21	Sylhet		580.0	408.0	0.1	215.0	193.0	801
22	Rashidpur		3,887.0	3,134.0	1.5	636.7	2,497.3	783
23	Chattak		677.0	474.0	0.0	25.8	448.2	4
24	Beani Bazar		225.0	137.0	0.3	96.8	40.2	1,593
SGFL			8,832.0	7,033.0	3.6	1,712.2	5,320.8	11,058
25	Bangura		730.0	621.0	2.7	442.3	178.7	1,117
Tullow			730.0	621.0	2.7	442.3	178.7	1,117
26	Kutubdia		65.0	46.0	0.0	0.0	46.0	0
Total			35,796.2	28,685.4	71.84	16,928.1	11,757.3	52,785

* Preliminary reserve estimated by BAPEX

** 2P reserve estimation by Petrobangla has crossed the limit. So 2P reserve is estimated as GIIP reserve now.

Production comparison between May'19 & June'19

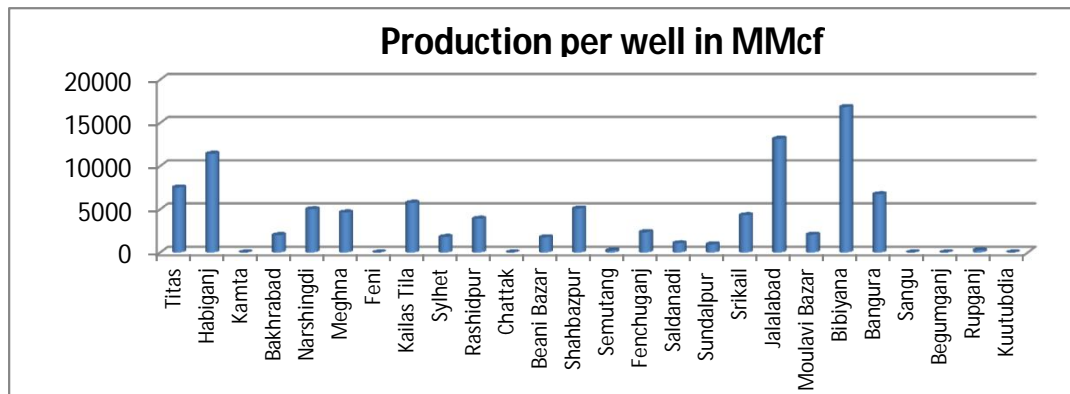


SI No.	Field	Gas Prod. (MMcf) in May'19	Daily Avg. (MMcfd) in May'19	Gas Prod. (MMcf) in June'19	Daily Avg. (MMcfd) in June'19
1	Begumganj	194	6	170	6
2	Shahbazpur	1857	60	1862	62
3	Semutang	23	1	22	1
4	Fenchuganj	172	6	154	5
5	Salda Nadi	128	4	123	4
6	Srikail	1050	34	1001	33
7	Sundalpur	218	7	207	7
8	Rupganj	0	0	0	0
Bapex		3642	117	3539	118
9	Meghna	293	9	272	9
10	Narshingdi	885	29	780	26
11	Kamta	0	0	0	0
12	Habiganj	6276	202	5750	192
13	Bakhrabad	1094	35	1229	41
14	Titas	14810	478	13294	443
BGFCL		23358	753	21326	711
15	Sangu	0	0	0	0
Santos/Cairn		0	0	0	0
16	Bibiyana	40489	1306	34306	1144
17	Moulavi Bazar	523	17	301	10
18	Jalalabad	6922	223	6029	201
Chevron		47934	1546	40636	1355
19	Feni	0	0	0	0
Niko		0	0	0	0
20	Kailas Tila	1846	60	1783	59
21	Sylhet	117	4	111	4
22	Rashidpur	1517	49	1454	48
23	Chattak	0	0	0	0
24	Beani Bazar	269	9	259	9
SGFL		3748	121	3608	120
25	Bangura	2864	92	2732	91
Tullow		2864	92	2732	91
26	Kutubdia	0	0	0	0
Total		81546	2631	71840	2395

Production per well & production reserve ratio



	No of well	Total 2p- Recoverable	2017-18 production	production per well mmcf	production reserve ratio
Titas	26	7582	195.42	7516.15	0.026
Habiganj	7	2787	79.9	11414.29	0.029
Kamta	0	50	0	0.00	0.000
Bakhrabad	6	1387	12.02	2003.33	0.009
Narshingdi	2	345	10.02	5010.00	0.029
Meghna	1	101	4.62	4620.00	0.046
Feni	0	130	0	0.00	0.000
Kailas Tila	4	2880	22.96	5740.00	0.008
Sylhet	1	408	1.79	1790.00	0.004
Rashidpur	5	3134	19.51	3902.00	0.006
Chattak	0	474	0	0.00	0.000
Beani Bazar	2	137	3.5	1750.00	0.026
Shahbazpur	3	261	15.26	5086.67	0.058
Semutang	2	318	0.46	230.00	0.001
Fenchuganj	2	329	4.7	2350.00	0.014
Saldanadi	1	275	1.06	1060.00	0.004
Sundalpur	1	50.2	0.94	940.00	0.019
Srikail	3	161	12.93	4310.00	0.080
Jalalabad	7	1346	92.09	13155.71	0.068
Moulavi Bazar	6	494	12.34	2056.67	0.025
Bibiyana	26	4532	437.33	16820.38	0.096
Bangura	5	621	33.67	6734.00	0.054
Sangu	0	771	0	0.00	0.000
Begumganj	0	33	0	0.00	0.000
Rupganj	1	33.6	0.25	250.00	0.007
Kuutubdia	0	46	0	0.00	0.000
Total	111	28685.8	960.77	8655.59	0.033



Monthly Production by Field and Well upto June- 2019



HYDROCARBON UNIT
Energy & Mineral Resources Division

Figure

Well	Jan	Feb	Mar	Apr	May	Jun	Jul	Aug	Sep	Oct	Nov	Dec	Total	Cumulative	2018	2017
Field : Bakharabad																
BKB-1	0	0	0	0	243	448							691	141,858	0	0
BKB-2	34	32	37	36	38	34							211	86,782	445	543
BKB-3	154	151	154	152	149	142							903	161,749	1,989	2,249
BKB-4	0	0	0	0	0	0							0	55,872		
BKB-5	155	140	154	146	141	140							876	59,688	1,822	1,847
BKB-6	0	0	0	0	0	0							0	50,069	0	
BKB-7	0	0	0		0	0							0	107,750	0	0
BKB-8	158	170	214	230	214	206							1,192	127,453	2,017	3,462
BKB-9	251	229	248	242	215	170							1,355	22,477	3,332	3,637
BKB-10	98	84	91	89	94	90							546	4,219	1,297	1,453
Field Total:	852	807	898	894	1,094	1,229	0	0	0	0	0	0	5,774	817,915	10,903	13,190
Daily Avg.(mmscfd)	27	29	29	30	35	41	0	0	0	0	0	0	32		30	36
Field : Bangura																
Bangura-1	384	343	377	363	368	354							2,190	91,444	4,615	4,914
Bangura-2	504	437	472	469	458	442							2,782	82,320	6,802	7,837
Bangura-3	601	516	563	544	544	470							3,238	99,965	7,265	8,662
Bangura-6	343	306	319	320	312	268							1,869	10,816	4,847	4,100
Bangura-5	1,212	1,087	1,200	1,153	1,182	1,197							7,030	157,772	8,410	9,699
Field Total:	3,044	2,690	2,931	2,848	2,864	2,732	0	0	0	0	0	0	17,109	442,317	31,940	35,212
Daily Avg.(mmscfd)	98	96	95	95	92	91	0	0	0	0	0	0	95		88	96
Field : Beani Bazar																
BB-1	0	0	0	0	0	0	0	0	0	0	0	0	0	35,481	0	1,023
BB-2	274	239	266	256	269	259							1,563	61,300	3,276	3,282
Field Total:	274	239	266	256	269	259	0	0	0	0	0	0	1,563	96,780	3,276	4,306
Daily Avg.(mmscfd)	9	9	9	9	9	9	0	0	0	0	0	0	9		9	12
Field : Bibiyana																
BY-1	2,554	2,149	2,272	2493	2,668	1,827							13,962	381,847	21,743	35,595
BY-2	1,632	1,327	1,573	1544	1,560	1,363							9,000	283,427	21,388	23,957
BY-3	737	608	567	549	526	519							3,505	238,775	6,249	9,904
BY-4	1,865	1,587	1,790	1921	2,125	1,896							11,184	191,722	28,559	6,571
BY-5	762	698	718	297	668	527							3,672	175,638	6,131	8,117
BY-6	792	617	771	809	937	623							4,547	226,042	11,057	11,879
BY-7	2,548	2,171	2,391	2190	2,322	1,904							13,526	258,109	23,155	32,874
BY-8	768	713	753	777	761	802							4,575	138,818	8,921	12,486
BY-9	553	482	359	476	484	488							2,843	127,460	4,093	6,247

Monthly Production by Field and Well upto June- 2019



HYDROCARBON UNIT

Energy & Mineral Resources Division

Figure

Well	Jan	Feb	Mar	Apr	May	Jun	Jul	Aug	Sep	Oct	Nov	Dec	Total	Cumulative	2018	2017
BY-10	2,106	1,752	2,357	2244	2,233	1,901							12,592	347,590	30,954	32,967
BY-11	797	626	657	818	861	727							4,485	124,446	12,147	6,813
BY-12	2,162	2,177	2,205	2245	2,280	2,173							13,243	135,946	6,835	8,284
BY-13	959	569	880	798	950	905							5,061	78,020	13,171	11,842
BY-14	800	730	845	666	777	660							4,477	95,090	11,523	15,354
BY-15	1,829	1,420	1,646	1693	2,124	1,806							10,518	107,438	24,295	19,111
BY-16	908	823	806	741	807	792							4,878	65,950	9,264	12,541
BY-17	1,794	1,176	1,440	1496	1,576	1,726							9,208	87,079	17,603	15,412
BY-18	2,784	2,387	2,668	2541	2,546	2,204							15,131	132,933	31,890	29,509
BY-19	1,761	2,275	2,368	2362	2,407	2,003							13,176	45,254	8,144	9,859
BY-20	1,636	2,008	2,113	2176	1,384	1,106							10,424	48,269	7,840	6,533
BY-21	634	531	656	671	719	649							3,859	39,083	9,670	13,246
BY-22	1,742	1,310	1,480	1517	1,833	1,403							9,285	117,085	24,755	27,093
BY-23	2,261	1,781	2,212	2100	2,190	1,731							12,275	64,322	32,043	15,333
BY-24	870	712	824	826	830	850							4,913	63,077	13,268	13,484
BY-25	2,070	2,145	2,340	2229	2,396	1,836							13,016	118,195	28,306	30,331
BY-26	2,683	2,344	2,465	2318	2,524	1,885							14,219	129,784	33,853	30,446
Field Total:	40006	35117	39154	38499	40489	34306	0	0	0	0	0	0	227,572	3,821,400	446,855	445,787
Daily Avg.(mmscfd)	1291	1254	1263	1283	1306	1144	0	0	0	0	0	0	1,257		1,224	1,221
Field :	Chattak															
Ch-1	Production Suspended														25,834	
Field Total:	0	0	0	0	0	0	0	0	0	0	0	0	0	0	25,834	
Daily Avg.(mmscfd)			0	0				0					0		0	
Field :	Fenchuganj															
Fenchuganj-2	0	0	0	0	0	0							0	38,169	0	0
Fenchuganj-3	274	203	225	217	145	129							1,193	91,831	3,186	6,192
Fenchuganj-4	60	30	30	28	27	25							200	29,474	809	441
Field Total:	334	234	255	245	172	154	0	0	0	0	0	0	1,393	159,473	3,994	6,633
Daily Avg.(mmscfd)	11	8	8	8	6	5	0	0	0	0	0	0	8		11	18
Field :	Feni															
Feni-1	Production Suspended								0				0		34,214	
Feni-2	Production Suspended								0				0		6,119	
Feni-3	Production Suspended								0				0		2,176	

Monthly Production by Field and Well upto June- 2019



HYDROCARBON UNIT
Energy & Mineral Resources Division

Figure

Well	Jan	Feb	Mar	Apr	May	Jun	Jul	Aug	Sep	Oct	Nov	Dec	Total	Cumulative	2018	2017			
Feni-4	Production Suspended								0								14,386		
Feni-5	Production Suspended								0								6,127		
Field Total:													63,023						
Daily Avg.(mmscfd)																			
Field : Habiganj																			
Hbj-1	429	375	414	379	369	331							2,296	280,404	2,207	0			
Hbj-2	0	0	0	0	0	0							0	275,704	0	0			
Hbj-3	1,105	952	986	925	954	861							5,784	382,942	13,155	13,151			
Hbj-4	1,105	952	986	925	954	861							5,784	377,400	13,155	13,151			
Hbj-5	798	711	776	746	770	725							4,527	302,201	9,497	9,497			
Hbj-6	461	413	459	447	461	435							2,677	164,886	5,487	5,491			
Hbj-7	1,211	1,090	1,233	1191	1,228	1,160							7,113	260,232	14,533	14,565			
Hbj-8	0	0	0	0	0	0							0	11,023	0	0			
Hbj-9	0	0	0	0	0	0							0	52,652	0	0			
Hbj-10	969	870	925.3	893	921	833							5,411	258,544	13,928	14,058			
Hbj-11	697	623	619.27	598	617	544							3,699	100,006	9,579	10,398			
Field Total:	6,776	5,985	6,400	6,104	6,276	5,750	0	0	0	0	0	0	37,291	2,465,992	81,540	80,313			
Daily Avg.(mmscfd)	219	214	206	203	202	192	0	0	0	0	0	0	206		223	220			
Field : Jalalabad																			
JB-1	877	733	790	761	813	703							4,677	250,446	10,469	9,142			
JB-2	1,088	910	978	934	1,001	876							5,788	285,384	12,973	14,517			
JB-3	1,451	1,214	1,313	1277	1,344	1,177							7,775	348,300	17,399	19,162			
JB-4	453	379	410	399	419	368							2,429	281,429	5,821	7,045			
JB-6	1,451	1,114	1,313	1277	1,332	1,163							7,650	66,975	17,364	19,524			
JB-7	1,088	910	985	955	1,014	882							5,834	35,224	13,053	10,324			
JB-8	1,073	898	971	943	1,000	860							5,745	49,675	12,793	14,513			
Field Total:	7,482	6,158	6,760	6,546	6,922	6,029	0	0	0	0	0	0	39,897	1,317,432	89,872	94,226			
Daily Avg.(mmscfd)	241	220	218	218	223	201	0	0	0	0	0	0	220		246	258			
Field : Kailas Tila																			
KTL-1	147	109	114	0	0	0							371	205,181	462	0			

Monthly Production by Field and Well upto June- 2019



HYDROCARBON UNIT

Energy & Mineral Resources Division

Figure

Well	Jan	Feb	Mar	Apr	May	Jun	Jul	Aug	Sep	Oct	Nov	Dec	Total	Cumulative	2018	2017
KTL-2	612	551	610	585	607	590							3,554	181,701	7,190	7,242
KTL-3	235	209	228	221	226	219							1,338	139,158	2,947	3,255
KTL-4	253	228	254	242	238	229							1,445	97,541	3,336	3,680
KTL-5	0	0	0	0	0	0							0	17,923	0	0
KTL-6	770	689	765	731	774	744							4,473	95,562	8,950	9,086
KTL-7	0	0	0	0	0	0							0	816	0	0
Field Total:	2,017	1,787	1,971	1,779	1,846	1,783	0	0	0	0	0	0	11,182	737,880	22,886	23,263
Daily Avg.(mmscfd)	65	64	64	59	60	59	0	0	0	0	0	0	62		63	64
Field : Kamta																
Kamta-1	Production Suspended														21,139	
Field Total:			0	0	0	0								21,139		
Daily Avg.(mmscfd)																
Field : Meghna																
M-1	372	308	314	302	293	272							1,862	70,836	4,538	4,625
Field Total:	372	308	314	302	293	272	0	0	0	0	0	0	1,862	70,836	4,538	4,625
Daily Avg.(mmscfd)	12	11	10	10	9	9	0	0	0	0	0	0	10		12	13
Field : Moulavi Bazar																
MV Bazar-2	121	79	72	62	58	29							421	54,459	2,302	2,866
MV Bazar-3	207	149	124	113	173	92							859	158,668	3,712	4,705
MV Bazar-4	159	102	67	60	54	26							467	58,534	3,103	3,945
MV Bazar-5	0	0	0	0	0	0								66		
MV Bazar-6	193	182	132	183	237	154							1,082	17,430	1,734	1,676
MV Bazar-7	1	1	0	0	0	0							3	5,646	21	152
MV Bazar-9	0	0	0	0	0	0							0	30,335	1	0
Field Total:	682	511	396	418	523	301	0	0	0	0	0	0	2,832	325,139	10,872	13,345
Daily Avg.(mmscfd)	22	18	13	14	17	10	0	0	0	0	0	0	16		30	37
Field : Narshingdi																
N-1	530	479	530	535	566	478							3,117	147,712	6,181	6,279
N-2	314	278	313	317	319	303							1,844	57,214	3,705	3,962

Monthly Production by Field and Well upto June- 2019



HYDROCARBON UNIT
Energy & Mineral Resources Division

Figure

Well	Jan	Feb	Mar	Apr	May	Jun	Jul	Aug	Sep	Oct	Nov	Dec	Total	Cumulative	2018	2017
Field Total:	844	757	843	852	885	780	0	0	0	0	0	0	4,961	204,926	9,886	10,241
Daily Avg.(mmscfd)	27	27	27	28	29	26	0	0	0	0	0	0	27		27	28
Field :	Rashidpur															
RP-1	542	491	530	513	537	513							3,126	170,189	6,505	6,625
RP-2	0	0	0	0	0	0							0	82,474		
RP-3	300	271	300	286	294	283							1,734	132,942	3,541	3,730
RP-4	267	239	262	243	237	223							1,472	129,367	3,227	3,516
RP-5	0	0	0	0	0	0							0	25,647		
RP-6	0	0	0	0	0	0							0	9,983	0	0
RP-7	173	155	163	149	143	138							921	65,247	2,096	2,225
RP-8	314	284	314	300	306	296							1,815	20,848	3,696	3,977
Field Total:	1,597	1,439	1,569	1,491	1,517	1,454	0	0	0	0	0	0	9,068	636,696	19,065	20,074
Daily Avg.(mmscfd)	52	51	51	50	49	48	0	0	0	0	0	0	50		52	55
Field :	Salda Nadi															
Salda-1	0	0	0	0	0	0							0	36,904	0	0
Salda-2	0	0	0	0	0	0							0	28,495	0	0
Salda-3	123	119	135	130	125	120							752	26,333	1,067	1,514
Salda-4	4	5	5	6	4	4							28	145	70	14
Field Total:	127	124	140	136	128	123	0	0	0	0	0	0	780	91,876	1,137	1,527
Daily Avg.(mmscfd)	4	4	5	5	4	4	0	0	0	0	0	0	4		3	4
Field :	Sangu															
Sangu-1	0	0	0	0	0	0	0	0	0	0	0	0	0	116,191	0	0
Sangu-3z	0	0	0	0	0	0	0	0	0	0	0	0	0	131,796	0	0
Sangu-4	Production Suspended						0	0	0	0	0	0	0	87,280		
Sangu-5	Production Suspended						0	0	0	0	0	0	0	61,674		
Sangu-7	Production Suspended						0	0	0	0	0	0	0	18,202		
Sangu-8	Production Suspended						0	0	0	0	0	0	0	37,619		
Sangu-9	0	0	0	0	0	0	0	0	0	0	0	0	0	30,638	0	0
Sangu-10	Production Suspended						0	0	0	0	0	0	0			
Sangu-11	0	0	0	0	0	0	0	0	0	0	0	0	0	6,067	0	0

Monthly Production by Field and Well upto June- 2019



HYDROCARBON UNIT

Energy & Mineral Resources Division

Figure

Well	Jan	Feb	Mar	Apr	May	Jun	Jul	Aug	Sep	Oct	Nov	Dec	Total	Cumulative	2018	2017
Field Total:	0	0	0	0	0	0	0	0	0	0	0	0	0	489,467	0	0
Daily Avg.(mmscfd)	0	0	0	0	0	0	0	0	0	0	0	0	0		0	0
Field :	Semutang															
Semutang-5	14	12	12	10	9	8							66	12,131	291	471
Semutang-6	7	11	14	14	14	14							74	1,030	84	66
Field Total:	22	23	27	24	23	22	0	0	0	0	0	0	140	13,161	375	537
Daily Avg.(mmscfd)	1	1	1	1	1	1	0	0	0	0	0	0	1		1	1
Field :	Shahbazpur															
Shahbazpur-1	0	0	0	0	35	265							300	21,658	134	4,835
Shahbazpur-2	534	523	637	656	678	531							3,558	14,640	6,650	4,243
Shahbazpur-3	377	436	505	510	536	585							2,949	15,275	5,222	1,162
Shahbazpur-4	513	452	567	632	608	481							3,252	16,256	6,936	1,801
Field Total:	1,424	1,411	1,709	1,797	1,857	1,862	0	0	0	0	0	0	10,059	67,829	18,943	12,041
Daily Avg.(mmscfd)	46	50	55	60	60	62	0	0	0	0	0	0	56		52	33
Field	Srikail															
Srikail-2	442	417	461	443	452	432							2,647	40,591	5,154	5,384
Srikail-3	358	333	363	337	337	322							2,049	36,881	4,273	4,944
Srikail-4	276	256	277	272	261	248							1,589	10,034	2,971	3,439
Field Total:	1,076	1,005	1,102	1,052	1,050	1,001	0	0	0	0	0	0	6,285	87,506	12,398	13,767
Daily Avg.(mmscfd)	35	36	36	35	34	33	0	0	0	0	0	0	35		34	38
Field :	Sundalpur															
Sundalpur -1	0	0	0		0	0							0	9,809	0	0
Sundalpur -2	220	200	220	212	218	207							1,277	3,453	2,176	0
Field Total:	220	200	220	212	218	207	0	0	0	0	0	0	1,277	13,262	2,176	0
Daily Avg.(mmscfd)	7	7	7	7	7	7	0	0	0	0	0	0	7		6	0
Field :	Sylhet															
Sylhet-3	Production Suspended													89,032		
Sylhet-6	Production Suspended													91,748		

Monthly Production by Field and Well upto June- 2019



HYDROCARBON UNIT

Energy & Mineral Resources Division

Figure

Well	Jan	Feb	Mar	Apr	May	Jun	Jul	Aug	Sep	Oct	Nov	Dec	Total	Cumulative	2018	2017
Sylhet-7	131	108	118	113	117	111							697	27,688	1,622	2,061
Surma-1	0	0	0	0	0	0							0	6,528	0	249
Field Total:	131	108	118	113	117	111	0	0	0	0	0	0	697	214,996	1,622	2,309
Daily Avg.(mmscfd)	4	4	4	4	4	4	0	0	0	0	0	0	4		4	6
Field :	Titas															
Titas-1	675	537	559	566	571	521							3,429	443,058	8,516	7,897
Titas-2	962	865	939	906	968	903							5,542	441,047	11,522	11,506
Titas-3	0	0	0	0	0	0	0	0	0	0	0	0	0	314,888	0	
Titas-4	994	861	960	923	972	900							5,611	376,062	11,726	11,798
Titas-5	1,020	899	997	968	1,015	975							5,874	434,126	11,838	11,869
Titas-6	978	878	958	964	142	739							4,658	367,787	12,030	12,029
Titas-7	947	824	977	891	948	740							5,326	350,190	11,919	11,707
Titas-8	510	426	498	497	567	433							2,931	275,567	6,154	6,889
Titas-9	539	475	517	518	583	548							3,180	279,669	6,706	8,246
Titas-10	647	565	636	619	702	671							3,839	202,840	7,612	7,431
Titas-11	855	762	867	830	858	282							4,454	251,355	9,998	10,276
Titas-12	482	422	483	463	476	305							2,631	103,406	5,160	5,168
Titas-13	580	513	576	552	567	501							3,289	193,382	6,952	7,879
Titas-14	576	498	566	536	552	412							3,139	153,124	7,203	8,309
Titas-15	460	412	434	405	420	402							2,532	142,046	5,543	7,973
Titas-16	669	592	646	612	635	569							3,723	150,068	8,605	10,060
Titas-17	515	431	507	475	514	443							2,885	42,388	6,335	7,011
Titas-18	546	458	535	504	540	464							3,046	41,052	6,664	7,168
Titas-19	507	450	489	458	471	441							2,817	30,866	6,115	6,106
Titas-20	305	277	310	294	306	292							1,784	20,612	3,914	3,635
Titas-21	253	232	258	249	263	250							1,504	10,736	2,995	2,800
Titas-22	309	284	296	231	269	265							1,653	26,071	4,158	4,336
Titas-27	487	404	478	455	479	418							2,720	31,560	5,827	6,136
Titas-23	483	436	489	477	496	459							2,840	12,845	5,594	4,410
Titas-24	202	185	207	196	195	188							1,172	6,163	2,709	2,283
Titas-25	528	476	528	508	519	472							3,032	15,246	6,324	5,622
Titas-26	809	733	801	731	783	702							4,560	23,825	9,672	9,210

Monthly Production by Field and Well upto June- 2019



HYDROCARBON UNIT
Energy & Mineral Resources Division

Figure

Well	Jan	Feb	Mar	Apr	May	Jun	Jul	Aug	Sep	Oct	Nov	Dec	Total	Cumulative	2018	2017
Field Total:	15,838	13,893	15,509	14,828	14,810	13,294	0	0	0	0	0	0	88,172	4,739,979	191,792	197,756
Daily Avg.(mmscfd)	511	496	500	494	478	443	0	0	0	0	0	0	487		525	542
Field : Begumganj																
Begumganj-3	176	179	200	197	194	170							1,115	2,585	593	0
Field Total:	176	179	200	197	194	170	0	0	0	0	0	0	1,115	2,585	593	0
Daily Avg.(mmscfd)	6	6	6	7	6	6	0	0	0	0	0	0	6		2	0
Field : Rupganj																
Rupganj-1	0	0	0										0	679	0	679
Field Total:	0	0	0	0	0	0	0	0	0	0	0	0	0	679	0	679
Daily Avg.(mmscfd)	0	0	0	0	0	0	0	0	0	0	0	0	0		0	2
Grand Total (in Bcf)	83.29	72.98	80.78	78.59	81.55	71.84	0	0.00	0.00	0.00	0.00	0.00		16,928.12	964.7	979.8
Daily Avg.(mmscfd)	2,687	2,606	2,606	2,620	2,631	2,395	0	0	0	0	0	0	#VALUE!		2,643	2,684

Monthly Condensate Production by Fields upto June 2019



Field Name	Jan-19	Feb-19	Mar-19	Apr-19	May-19	Jun-19	Jul-19	Aug-19	Sep-19	Oct-19	Nov-19	Dec-19	Total	Cumulative 000' bbl	2018	2017	2016
Bakhrabad	475	462	432	402	550	706							3,027	1,023	5,022	6,173	7,091
Daily Avg.	15	17	14	13	18	24	0	0	0	0	0	0	17		14	17	229
Bangura	9,547	8,321	8,755	8,380	8,381	7,905							51,289	1,117	94,737	103,198	103,416
Daily Avg.	308	297	282	279	270	264	0	0	0	0	0	0	283		260	283	3,336
Beani Bazar	4,207	3,945	4,525	4,262	4,394	4,198							25,529	1,593	51,187	68,202	56,146
Daily Avg.	136	141	146	142	142	140	0	0	0	0	0	0	141		140	187	1,811
Bibiyana	286,489	247,882	275,825	268,384	277,796	213,400							1,569,776	22,724	3,267,318	3,283,757	3,291,906
Daily Avg.	9,242	8,853	8,898	8,946	8,961	7,113	0	0	0	0	0	0	8,673		8,952	8,997	106,191
Chattak	0	0	0	0	0	0	0	0	0	0	0	0	0	4	0		
Daily Avg.	0	0	0	0	0	0	0	0	0	0	0	0	0		0		
Fenchuganj	126	80	121	108	90	48							573	116	1,625	2,462	6,138
Daily Avg.	4	3	4	4	3	2	0	0	0	0	0	0	3		4	7	198
Feni	0	0	0	0	0	0	0	0	0	0	0	0	0	110	0	0	0
Daily Avg.	0	0	0	0	0	0	0	0	0	0	0	0	0		0	0	0
Habiganj	721	610	776	681	642	571							4,001	134	5,612	3,955	4,143
Daily Avg.	23	22	25	23	21	19	0	0	0	0	0	0	22		15	11	134
Jalalabad	29,901	23,874	25,898	25,716	26,805	23,241							155,435	10,294	367,160	437,070	528,191
Daily Avg.	965	853	835	857	865	775	0	0	0	0	0	0	859		1,006	1,197	17,038
Kailas Tila	17,562	17,085	16,738	16,259	1,545	13,773							82,961	7,878	189,620	203,979	223,169
Daily Avg.	567	610	540	542	50	459	0	0	0	0	0	0	458		520	559	7,199
Kamta	Production Suspended									0	0			4			
Daily Avg.										0	0			0	0	0	
Meghna	589	514	647	678	645	592							3,665	111	7,947	7,741	7,735
Daily Avg.	19	18	21	23	21	20	0	0	0	0	0	0	20		22	21	250
Moulavi Bazar	104	80	63	53	62	27							389	118	856	1,128	1,585
Daily Avg.	3	3	2	2	2	1	0	0	0	0	0	0	2		2	3	51

Monthly Condensate Production by Fields upto June 2019



Field Name	Jan-19	Feb-19	Mar-19	Apr-19	May-19	Jun-19	Jul-19	Aug-19	Sep-19	Oct-19	Nov-19	Dec-19	Total	Cumulative 000' bbl	2018	2017	2016
Narshingdi	1,285	1,131	1,235	1,205	1,217	1,120							7,193	425	15,797	16,656	17,534
Daily Avg.	41	40	40	40	39	37	0	0	0	0	0	0	40		43	46	566
Rashidpur	1,213	1,038	1,083	1,069	1,084	1,542							7,028	783	14,393	10,723	14,938
Daily Avg.	39	37	35	36	35	51	0	0	0	0	0	0	39		39	29	482
Saldanadi	19	19	21	20	19	17							114	58	137	225	386
Daily Avg.	1	1	1	1	1	1	0	0	0	0	0	0	1		0	1	12
Sangu	0	0	0	0	0	0	0	0	0	0	0	0	0	37	0	0	0
Daily Avg.	0	0	0	0	0	0	0	0	0	0	0	0	0		0	0	0
Semutang	0	0	0	0	0	0							0	5	26	99	272
Daily Avg.	0	0	0	0	0	0	0	0	0	0	0	0	0		0	0	9
Shahbazpur	187	148	211	207	207	27							987	7	2,488	1,791	839
Daily Avg.	6	5	7	7	7	1	0	0	0	0	0	0	5		7	5	27
Srikail	3,226	2,920	3,143	2,913	2,950	2,796							17,947	146	33,765	37,879	21,075
Daily Avg.	104	104	101	97	95	93	0	0	0	0	0	0	99		93	104	680
Sundalpur	10	9	10	10	9	24							72	0	121	0	0
Daily Avg.	0	0	0	0	0	1	0	0	0	0	0	0	0		0	0	0
Sylhet	969	864	981	881	901	845							5,443	801	10,277	15,593	20,532
Daily Avg.	31	31	32	29	29	28	0	0	0	0	0	0	30		28	43	662
Titas	13,655	11,331	12,573	12,503	12,163	10,239							72,464	5,296	159,803	154,262	133,133
Daily Avg.	440	405	406	417	392	341	0	0	0	0	0	0	400		438	423	4,295
Begumganj	60	60	57	63	58	54							352	1	201	0	0
Daily Avg.	2	0	0	0	0	2	0	0	0	0	0	0	2		1	0	0
Rupganj	0	0	0	0		0							0	1	0	1,133	
Daily Avg.	0	0	0	0	0	0	0	0	0	0	0	0	0		0	3	
Total (000'bbl)	370	320	353	344	340	281	0	0	0	0	0	0	2,008	52,785	4,228	4,356	4,438
Daily Avg. (000'bbl)	11.9	11.4	11.4	11.5	11.0	9	0.0	0.0	0.0	0.0	0	0	11		11.6	11.9	12.2

Note: Historical condensate figure of Sangu available from 2006. Sylhet available from August 1964

Monthly Water Production by Fields in June 2019



Field Name	Jan-19	Feb-19	Mar-19	Apr-19	May-19	Jun-19	Jul-19	Aug-19	Sep-19	Oct-19	Nov-19	Dec-19	Total	2,018	2,017
Bakhrabad	2,117	1,708	1,795	1,720	2,049	2,172							11,561	28,218	8,419
Daily Avg.	68	61	58	57	66	72	0	0	0	0	0	0	64	77	
Bangura	3,330	3,016	3,301	3,107	3,197	2,968							18,919	43,917	11,705
Daily Avg.	107	108	106	104	103	99	0	0	0	0	0	0	105	120	
Beani Bazar	9,793	8,568	9,561	9,283	10,305	10,427							57,938	109,854	24,865
Daily Avg.	316	306	308	309	332	348	0	0	0	0	0	0	320	301	
Bibiyana	16,351	14,524	15,756	15,544	16,508	15,623							94,306	194,651	47,219
Daily Avg.	527	519	508	518	533	521	0	0	0	0	0	0	521	533	
Chattak	0	0	0	0	0	0	0	0	0	0	0	0			
Daily Avg.	0	0	0	0	0	0	0	0	0	0	0	0	0	0	
Fenchuganj	6,323	3,006	3,558	3,470	2,712	2,861							21,928	74,969	6,700
Daily Avg.	204	107	115	116	87	95	0	0	0	0	0	0	121	205	
Feni	0	0	0	0	0	0	0	0	0	0	0	0	0	0	0
Daily Avg.	0	0	0	0	0	0	0	0	0	0	0	0	0	0	0
Habiganj	2,532	2,133	1,034	874	988	820							8,381	39,104	5,197
Daily Avg.	82	76	33	29	32	27	0	0	0	0	0	0	46	107	
Jalalabad	4,717	4,157	4,424	4,369	4,254	3,659							25,580	55,950	12,915
Daily Avg.	152	148	143	146	137	122	0	0	0	0	0	0	141	153	
Kailas Tila	3,934	3,519	3,851	3,562	1,772	3,011							19,649	43,233	6,809
Daily Avg.	127	126	124	119	57	100	0	0	0	0	0	0	109	118	
Kamta	0	0	0	0	0	0	0	0	0	0	0	0			
Daily Avg.	0	0	0	0	0	0	0	0	0	0	0	0	0	0	
Meghna	211	429	525	631	631	651							3,078	2,014	551
Daily Avg.	7	15	17	21	20	22	0	0	0	0	0	0	17	6	
Moulavi Bazar	1,379	710	735	550	427	189							3,991	13,965	754
Daily Avg.	44	25	24	18	14	6	0	0	0	0	0	0	22	38	
Narshingdi	883	798	888	879	939	806							5,193	10,374	2,645
Daily Avg.	28	29	29	29	30	27	0	0	0	0	0	0	29	28	
Rashidpur	13,567	12,332	13,512	12,940	13,181	12,638							78,170	137,406	30,969
Daily Avg.	438	440	436	431	425	421	0	0	0	0	0	0	432	376	
Saldanadi	129	115	126	127	131	127							755	813	387
Daily Avg.	4	4	4	4	4	4	0	0	0	0	0	0	4	2	

Monthly Water Production by Fields in June 2019



HYDROCARBON UNIT
Energy & Mineral Resources Division

Field Name	Jan-19	Feb-19	Mar-19	Apr-19	May-19	Jun-19	Jul-19	Aug-19	Sep-19	Oct-19	Nov-19	Dec-19	Total	2,018	2,017
Sangu	0	0	0	0	0	0	0	0	0	0	0	0	0	0	0
Daily Avg	0	0	0	0	0	0	0	0	0	0	0	0	0	0	0
Semutang	45	47	69	63	65	63							351	3,002	719
Daily Avg	1	2	2	2	2	2	0	0	0	0	0	0	2	8	
Shahbazpur	1,789	1,679	2,096	2,180	2,244	2,257							12,245	22,110	3,912
Daily Avg.	58	60	68	73	72	75	0	0	0	0	0	0	68	61	
Srikail	1,649	1,517	2,021	1,641	1,662	1,592							10,081	18,432	4,904
Daily Avg.	53	54	65	55	54	53	0	0	0	0	0	0	56	50	
Sundalpur	26	24	27	27	27	32							162	219	0
Daily Avg.	1	1	1	1	1	1	0	0	0	0	0	0	1	1	
Sylhet	2,312	2,022	2,221	2,156	2,234	2,511							13,456	20,362	1,298
Daily Avg.	75	72	72	72	72	84	0	0	0	0	0	0	74	56	
Titas	49,706	45,683	50,613	49,852	54,221	50,778							300,853	556,608	126,334
Daily Avg.	1,603	1,632	1,633	1,662	1,749	1,693	0	0	0	0	0	0	1,662	1,525	
Begumganj	69	54	61	59	59	67							368	207	0
Daily Avg.	2	2	2	2	2	2	0	0	0	0	0	0	2	1	
Rupganj	0	0	0	0	0	0							0	0	34
Daily Avg.	0	0	0	0	0	0	0	0	0	0	0	0	0	0	
Total (000'bl)	120,860	106,040	116,173	113,034	117,606	113,251	0	0	0	0	0	0	686,965	1,375,408	296
Daily Avg. (000'bb)	3,899	3,787	3,748	3,768	3,794	3,775	0	0	0	0	0	0	3,795	3,768	1

Conditions of Field and Well upto June 2019



Well	company	well type	Discovery	production start	Drilled depth (ft)	Pressure	Pressure type	Completion Zone
Field : Bakharabad								
BKB-1	BGFCL	Vertical	1969	June,1969	9309		FWHP	J
BKB-2	BGFCL	Directional	1969	October,1981	7496	248-274	FWHP	G
BKB-3	BGFCL	Directional	1969	April,1982	9339	356-412	FWHP	G
BKB-4	BGFCL	Directional	1969	June,1982	9430			D
BKB-5	BGFCL	Directional	1969	Sept,1982	9675	1555-1646	FWHP	B
BKB-6	BGFCL	Directional	1969	March,1989	8785			J
BKB-7	BGFCL	Directional	1969	July,1989	8605		FWHP	J
BKB-8	BGFCL	Directional	1969	Sept,1989	8840	490-523	FWHP	J
BKB-9	BGFCL	Vertical	1969	August,2013	8318	1005-1097	FWHP	G
BKB-10	BGFCL	Directional	1969	June,2016	9291	1010-1102	FWHP	K
Field : Bangura								
Bangura-1	Tullow		2004			887-940	FWHP	D
Bangura-2	Tullow		2004			587-685	FWHP	D/E
Bangura-3	Tullow		2004			719-789	FWHP	D
Bangura-6	Tullow		2004			708-780	FWHP	D
Bangura-5	Tullow		2004			579-621	FWHP	D
Field : Beani Bazar								
BB-1	SGFL		1981	July,1999	13480	580-620	SIWHP	Upper
BB-2	SGFL		1981	July,1999	12048	3210-3220	FWHP	Upper
Field : Bibiyana								
BY-1	Chevron		1998			1547-2007	FWHP	BB60, BB66
BY-2	Chevron		1998			1313-1390	FWHP	BB60, BH20A, BH20E
BY-3	Chevron		1998			1363-1403	FWHP	BB70
BY-4	Chevron		1998			1330-1390	FWHP	BH10
BY-5	Chevron		1998			1254-1299	FWHP	BH20A, BH20B, BH20C, BH20D
BY-6	Chevron		1998			1250-1486	FWHP	BB70
BY-7	Chevron		1998			1454-1566	FWHP	BH10
BY-8	Chevron		1998			1270-1297	FWHP	BH20A, BH20B
BY-9	Chevron		1998			1243-1273	FWHP	BH10
BY-10	Chevron		1998			1465-1533	FWHP	BB60
BY-11	Chevron		1998			1260-1284	FWHP	BH20A, BH20B
BY-12	Chevron		1998			1259-1332	FWHP	BB70
BY-13	Chevron		1998			1300-1356	FWHP	BH20A, BH20B
BY-14	Chevron		1998			1342-1632	FWHP	BH20A, BH20B
BY-15	Chevron		1998			2189-2240	FWHP	BB60
BY-16	Chevron		1998			1381-1644	FWHP	BH10, BH20D

Conditions of Field and Well upto June 2019



Well	company	well type	Discovery	production start	Drilled depth (ft)	Pressure	Pressure type	Completion Zone
BY-17	<i>Chevron</i>		1998			2104-2229	<i>FWHP</i>	<i>BB60</i>
BY-18	<i>Chevron</i>		1998			1904-2218	<i>FWHP</i>	<i>BB60</i>
BY-19	<i>Chevron</i>		1998			1354-1477	<i>FWHP</i>	<i>BH10, BH20A</i>
BY-20	<i>Chevron</i>		1998			1248-1262	<i>FWHP</i>	<i>BH20D, BH20A, BH10</i>
BY-21	<i>Chevron</i>		1998			1333-1348	<i>FWHP</i>	<i>BH20A, BH20B, BH10</i>
BY-22	<i>Chevron</i>		1998			1552-1586	<i>FWHP</i>	<i>BB60</i>
BY-23	<i>Chevron</i>		1998			1739-2021	<i>FWHP</i>	<i>BH10, BH20A, BH20B, BH20C</i>
BY-24	<i>Chevron</i>		1998			1337-2091	<i>FWHP</i>	<i>BB60</i>
BY-25	<i>Chevron</i>		1998			1728-1857	<i>FWHP</i>	<i>BB60, BB66</i>
BY-26	<i>Chevron</i>		1998			1877-2094	<i>FWHP</i>	<i>BB60, BB64</i>
Field : Chattak								
Ch-1	SGFL		1959					
Field : Fenchuganj								
Fenchuganj-2	BAPEX		1988	May, 2004				
Fenchuganj-3	BAPEX		1988	February, 2005		2004-2010		<i>upper</i>
Fenchuganj-4	BAPEX		1988			2037-2065		
Field : Feni								
Feni-1	BAPEX		1981					
Feni-2	BAPEX		1981					
Feni-3	BAPEX		1981					
Feni-4	BAPEX		1981					
Feni-5	BAPEX		1981					
Field : Habiganj								
Hbj-1	BGFCL	<i>Vertical</i>	1963	Feb,1969	11500		<i>FWHP</i>	<i>upper</i>
Hbj-2	BGFCL	<i>Vertical</i>	1963	Feb,1969	5100		<i>FWHP</i>	<i>upper</i>
Hbj-3	BGFCL	<i>Vertical</i>	1963	July,1985	5282	1478-1486	<i>FWHP</i>	<i>upper</i>
Hbj-4	BGFCL	<i>Vertical</i>	1963	May,1985	5249	1460-1467	<i>FWHP</i>	<i>upper</i>
Hbj-5	BGFCL	<i>Directional</i>	1963	Feb,1992	11552	1440-1446	<i>FWHP</i>	<i>upper</i>
Hbj-6	BGFCL	<i>Vertical</i>	1963	Feb,1992	5515	1375-1379	<i>FWHP</i>	<i>upper</i>
Hbj-7	BGFCL	<i>Vertical</i>	1963	April,2000	10236	1331-1139	<i>FWHP</i>	<i>upper</i>
Hbj-8	BGFCL	<i>Vertical</i>	1963	May, 2000	5280			<i>upper</i>
Hbj-9	BGFCL	<i>Vertical</i>	1963	July,1998	5249			<i>upper</i>
Hbj-10	BGFCL	<i>Vertical</i>	1963	Apr, 2000	5133	1322-1331	<i>FWHP</i>	<i>upper</i>
Hbj-11	BGFCL	<i>Vertical</i>	1963	February,2008	10499	1417-1423	<i>FWHP</i>	<i>upper</i>
Field : Jalalabad								
JB-1	<i>Chevron</i>		1989			1333-1436	<i>FWHP</i>	<i>BB60, BB50</i>

Conditions of Field and Well upto June 2019



Well	company	well type	Discovery	production start	Drilled depth (ft)	Pressure	Pressure type	Completion Zone
JB-2	<i>Chevron</i>		1989			1279-1294	<i>FWHP</i>	<i>BB50, BB60</i>
JB-3	<i>Chevron</i>		1989			1332-1375	<i>FWHP</i>	<i>BB50, BB60</i>
JB-4	<i>Chevron</i>		1989			1365-1425	<i>FWHP</i>	<i>BB60</i>
JB-6	<i>Chevron</i>		1989			1354-1362	<i>FWHP</i>	<i>BB60, BB50</i>
JB-7	<i>Chevron</i>		1989			1666-1679	<i>FWHP</i>	<i>BB20</i>
JB-8	<i>Chevron</i>		1989			1362-1370	<i>FWHP</i>	<i>BB50, BB60</i>
Field : Kailas Tila								
KTL-1	<i>SGFL</i>		1962	<i>June, 1983</i>	<i>12417</i>	<i>0</i>	<i>SIWHP</i>	
KTL-2	<i>SGFL</i>		1962	<i>Feb, 1995</i>		<i>2225-2230</i>	<i>FWHP</i>	
KTL-3	<i>SGFL</i>		1962	<i>March, 1995</i>		<i>2470-2495</i>	<i>FWHP</i>	
KTL-4	<i>SGFL</i>		1962	<i>March, 1997</i>		<i>2360-2410</i>	<i>FWHP</i>	
KTL-5	<i>SGFL</i>		1962	<i>Sep, 2006</i>		<i>0</i>	<i>SIWHP</i>	
KTL-6	<i>SGFL</i>		1962	<i>Aug, 2007</i>		<i>2490-2495</i>	<i>FWHP</i>	
KTL-7	<i>SGFL</i>		1962			<i>0</i>	<i>SIWHP</i>	
Field : Kamta								
Kamta-1	<i>BGFCL</i>	<i>Vertical</i>	1981	<i>july,1982</i>	<i>11857</i>			<i>N/A</i>
Field : Meghna								
M-1	<i>BGFCL</i>	<i>Vertical</i>	2004	<i>july,1990</i>	<i>10069</i>	<i>1400-1450</i>	<i>FWHP</i>	<i>A,E,F & G</i>
Field : Moulavi Bazar								
MV Bazar-2	<i>Chevron</i>		1997			<i>800-820</i>	<i>FWHP</i>	<i>BB70</i>
MV Bazar-3	<i>Chevron</i>		1997			<i>800-820</i>	<i>FWHP</i>	<i>BB70</i>
MV Bazar-4	<i>Chevron</i>		1997			<i>946-952</i>	<i>FWHP</i>	<i>BB20</i>
MV Bazar-5	<i>Chevron</i>		1997			<i>0</i>	<i>SIWHP</i>	<i>BB60</i>
MV Bazar-6	<i>Chevron</i>		1997			<i>822-890</i>	<i>FWHP</i>	<i>BB20</i>
MV Bazar-7	<i>Chevron</i>		1997			<i>844-901</i>	<i>FWHP/SIWHP</i>	<i>BB20</i>
MV Bazar-9	<i>Chevron</i>		1997			<i>0</i>	<i>SIWHP</i>	<i>BB46, BB48, BB60</i>
Field : Narshingdi								
N-1	<i>BGFCL</i>	<i>vertical</i>	1990	<i>october,1990</i>	<i>11320</i>	<i>1143-1197</i>	<i>FWHP</i>	<i>BL</i>
N-2	<i>BGFCL</i>	<i>vertical</i>	1990	<i>february,2007</i>	<i>10778</i>	<i>1015-1097</i>	<i>FWHP</i>	<i>BL</i>
Field : Rashidpur								
RP-1	<i>SGFL</i>		1960			<i>1290-1291</i>	<i>FWHP</i>	<i>Upper</i>
RP-2	<i>SGFL</i>		1960			<i>73</i>	<i>SIWHP</i>	<i>Lower</i>
RP-3	<i>SGFL</i>		1960			<i>1548-1568</i>	<i>FWHP</i>	<i>Lower</i>
RP-4	<i>SGFL</i>		1960			<i>1450-1655</i>	<i>FWHP</i>	<i>Lower</i>
RP-5	<i>SGFL</i>		1960			<i>2291</i>	<i>SIWHP</i>	<i>Lower</i>
RP-6	<i>SGFL</i>		1960			<i>870</i>	<i>SIWHP</i>	<i>A</i>

Conditions of Field and Well upto June 2019



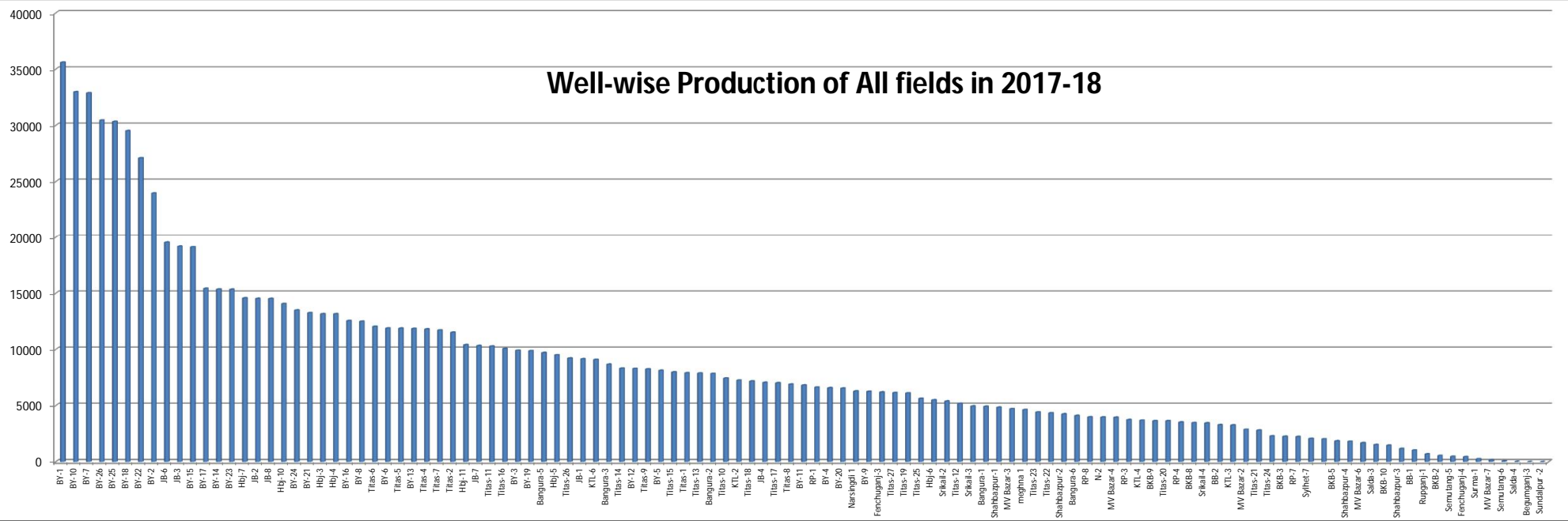
Well	company	well type	Discovery	production start	Drilled depth (ft)	Pressure	Pressure type	Completion Zone
RP-7	SGFL		1960			1308-1338	FWHP	Lower
RP-8	SGFL		1960			1600-1625	FWHP	Upper
Field : Salda Nadi								
Salda-1	BAPEX		1995					
Salda-2	BAPEX		1995					
Salda-3	BAPEX	Directional	1995	February, 2012		639-640, 698-700		Upper/Lower
Salda-4	BAPEX		1995					
Field : Sangu								
Sangu-1	BGFCL		1996					
Sangu-3z	BGFCL		1996					
Sangu-4	BGFCL		1996					
Sangu-5	BGFCL		1996					
Sangu-7	BGFCL		1996					
Sangu-8	BGFCL		1996					
Sangu-9	BGFCL		1996					
Sangu-10	BGFCL		1996					
Sangu-11	BGFCL		1996					
Field : Semutang								
Semutang-5	BAPEX		1967			280-508		Lower Zone
Semutang-6	BAPEX		1967			750-1302		
Field : Shahbazpur								
Shahbazpur-1	BAPEX		1995	May, 2009		2310-3543		Lower Zone
Shahbazpur-2	BAPEX		1995			3541-4133		Lower Zone
Shahbazpur-3	BAPEX		1995			4300		Upper Zone
Shahbazpur-4	BAPEX		1995			4250		Upper Zone
Field : Srikail								
Srikail-2	BAPEX		2012			990-1016		Upper & Lower D
Srikail-3	BAPEX		2012			981-1043		Upper & Lower D
Srikail-4	BAPEX		2012			1018-1068		Upper & Lower D
Field : Sundalpur								
Sundalpur -1	BAPEX		2011					
Sundalpur -2	BAPEX		2011					
Field : Sylhet								
Sylhet-3	SGFL		1955	Aug, 1958				
Sylhet-6	SGFL		1955	Aug, 1964		800-850	SIWHP	
Sylhet-7	SGFL		1955	Apr, 2005		1750-1820	FWHP	Lower Bokabil

Conditions of Field and Well upto June 2019

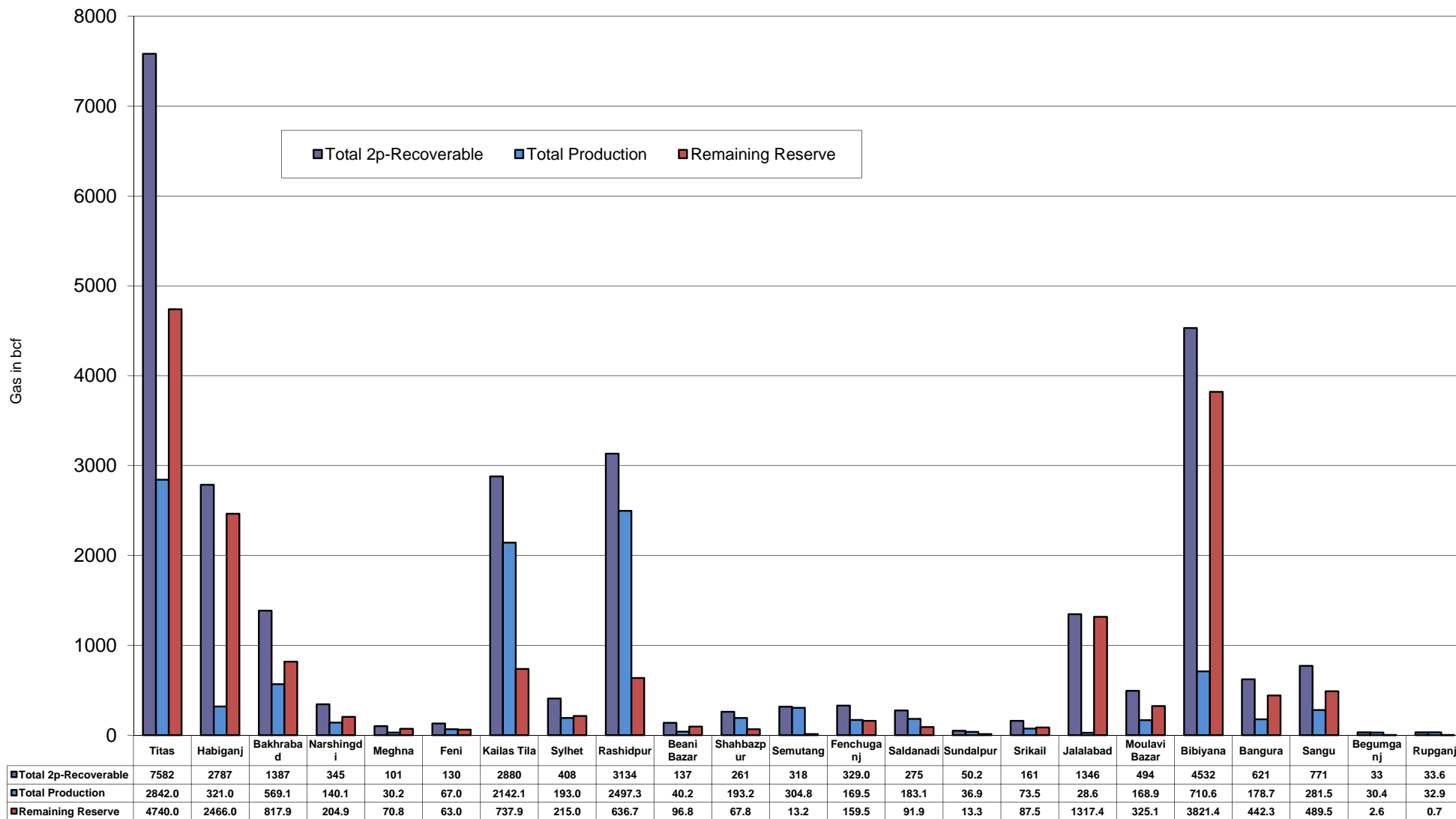


Well	company	well type	Discovery	production start	Drilled depth (ft)	Pressure	Pressure type	Completion Zone
Surma-1	SGFL		1955	June, 2010		230	SIWHP	C & D
Field :		Titas						
Titas-1	BGFCL	vertical	1962	Mar,1969	12325	900-925	FWHP	A
Titas-2	BGFCL	vertical	1962	Fen,1969	10574	960-1020	FWHP	A
Titas-3	BGFCL	vertical	1962	sept,1969	9315	0	FWHP	A
Titas-4	BGFCL	vertical	1962	oct,1969	9350	1020-1070	FWHP	A
Titas-5	BGFCL	Directional	1962	jan,1981	10805	990-1035	FWHP	A
Titas-6	BGFCL	vertical	1962	Feb,1984	10072	1195-1225	FWHP	A
Titas-7	BGFCL	Directional	1962	July,1985	11006	1090-1160	FWHP	A
Titas-8	BGFCL	Directional	1962	sept,1985	11760	1000-1030	FWHP	B & C
Titas-9	BGFCL	Directional	1962	jan,1988	11893	1040-1085	FWHP	B & C
Titas-10	BGFCL	Directional	1962	may,1988	12139	1140-1180	FWHP	A
Titas-11	BGFCL	vertical	1962	Jun,1991	10462	1275-1310	FWHP	A
Titas-12	BGFCL	Directional	1962	July,2002	9873	1465-1500	FWHP	A
Titas-13	BGFCL	Directional	1962	June,2000	11487	1085-1115	FWHP	A
Titas-14	BGFCL	Directional	1962	June,2000	11004	1200-1250	FWHP	A
Titas-15	BGFCL	vertical	1962	may,2006	10446	0	FWHP	A
Titas-16	BGFCL	Directional	1962	dec,2005	11673	1205-1225	FWHP	A
Titas-17	BGFCL	vertical	1962	feb,2013	9424	1145-1175	FWHP	A
Titas-18	BGFCL	Directional	1962	august,2013	10932	1165-1190	FWHP	A
Titas-19	BGFCL	Directional	1962	may,2014	12730	1365-1415	FWHP	A
Titas-20	BGFCL	Directional	1962	oct,2013	11585	1370-1440	FWHP	A
Titas-21	BGFCL	Directional	1962	dec,2013	11631	1260-1285	FWHP	A
Titas-22	BGFCL	Directional	1962	march,2014	11926	990-1025	FWHP	A
Titas-27	BGFCL	Directional	1962	april,2014	10292	1245-1265	FWHP	A
Titas-23	BGFCL	Directional	1962	feb,2017	11988	2265-2340	FWHP	C
Titas-24	BGFCL	Directional	1962	oct,2016	12686	1120-1245	FWHP	C
Titas-25	BGFCL	vertical	1962	march,2016	11680	1300-1340	FWHP	A
Titas-26	BGFCL	Directional	1962	july,2016	12618	1840-1875	FWHP	C
Field :		Begumganj						
Begumganj-3	BAPEX		1977					
Field :		Rupganj						
Rupganj-1	BAPEX		2014			38-88		

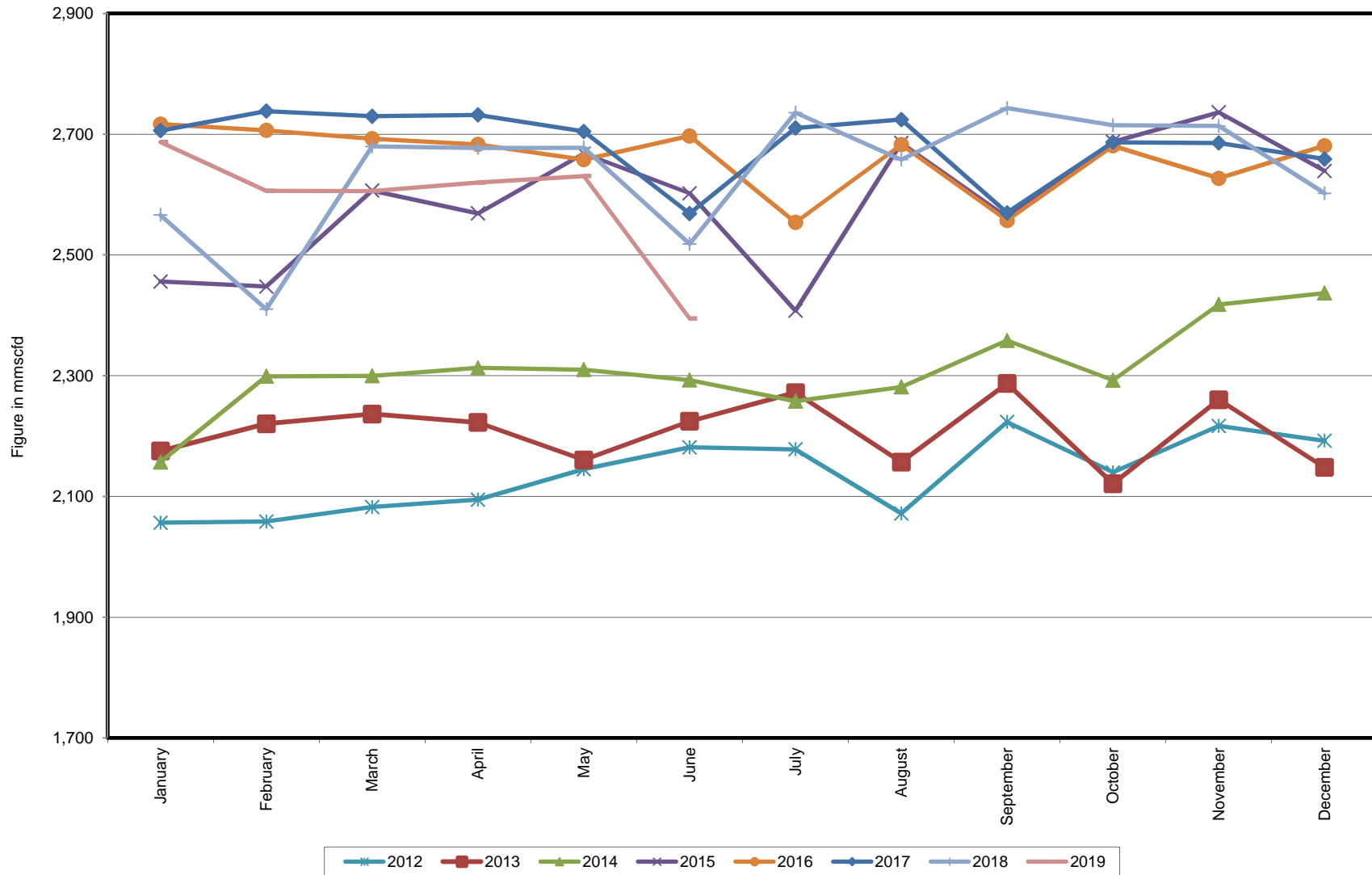
Well-wise Production of All fields in 2017-18



Reserve, Production and Remaining Reserve as of June 2019



Daily Avg. Production From January 2012 to June 2019



Field Wise Daily Avg. Production June 2019

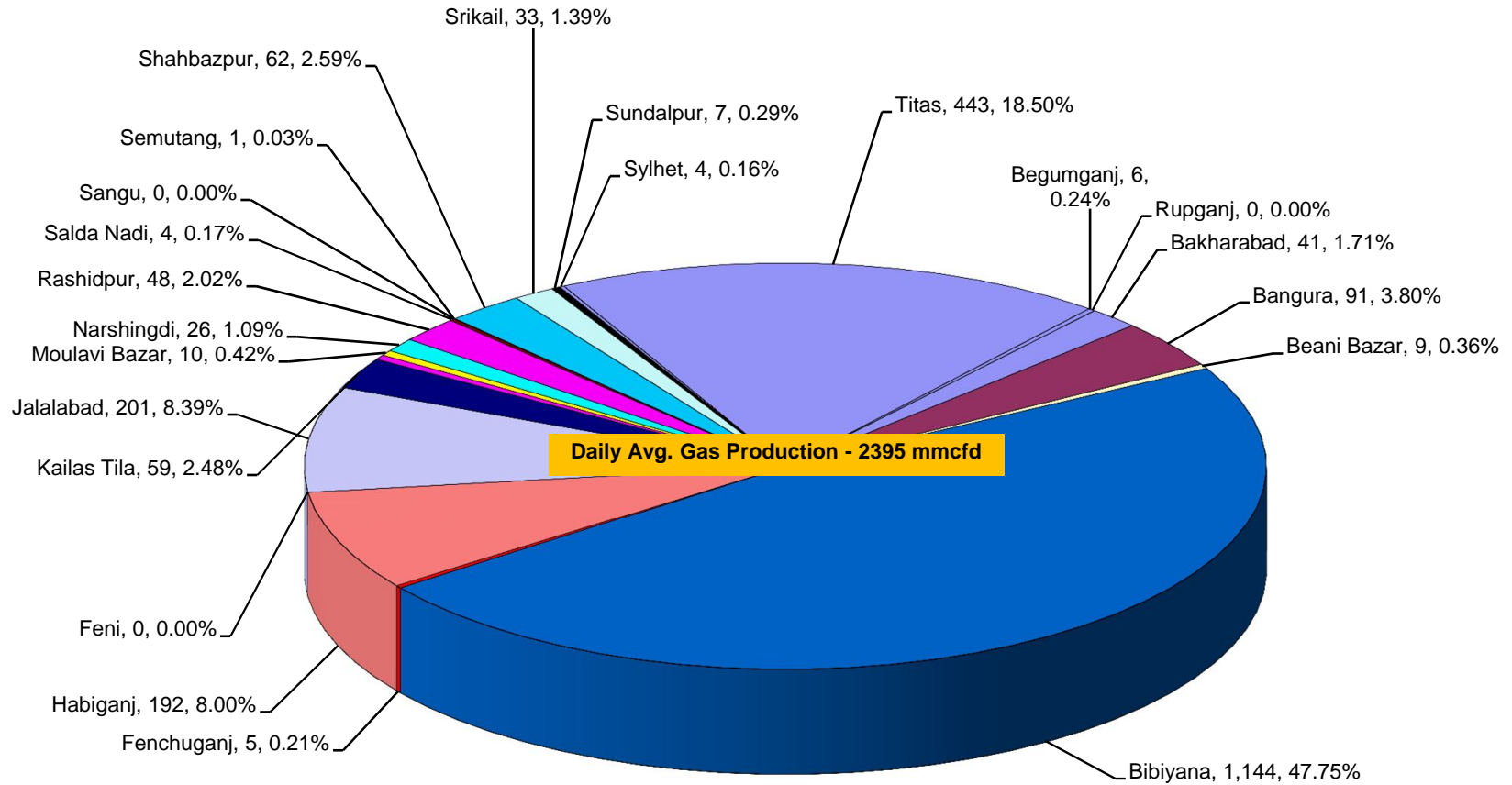
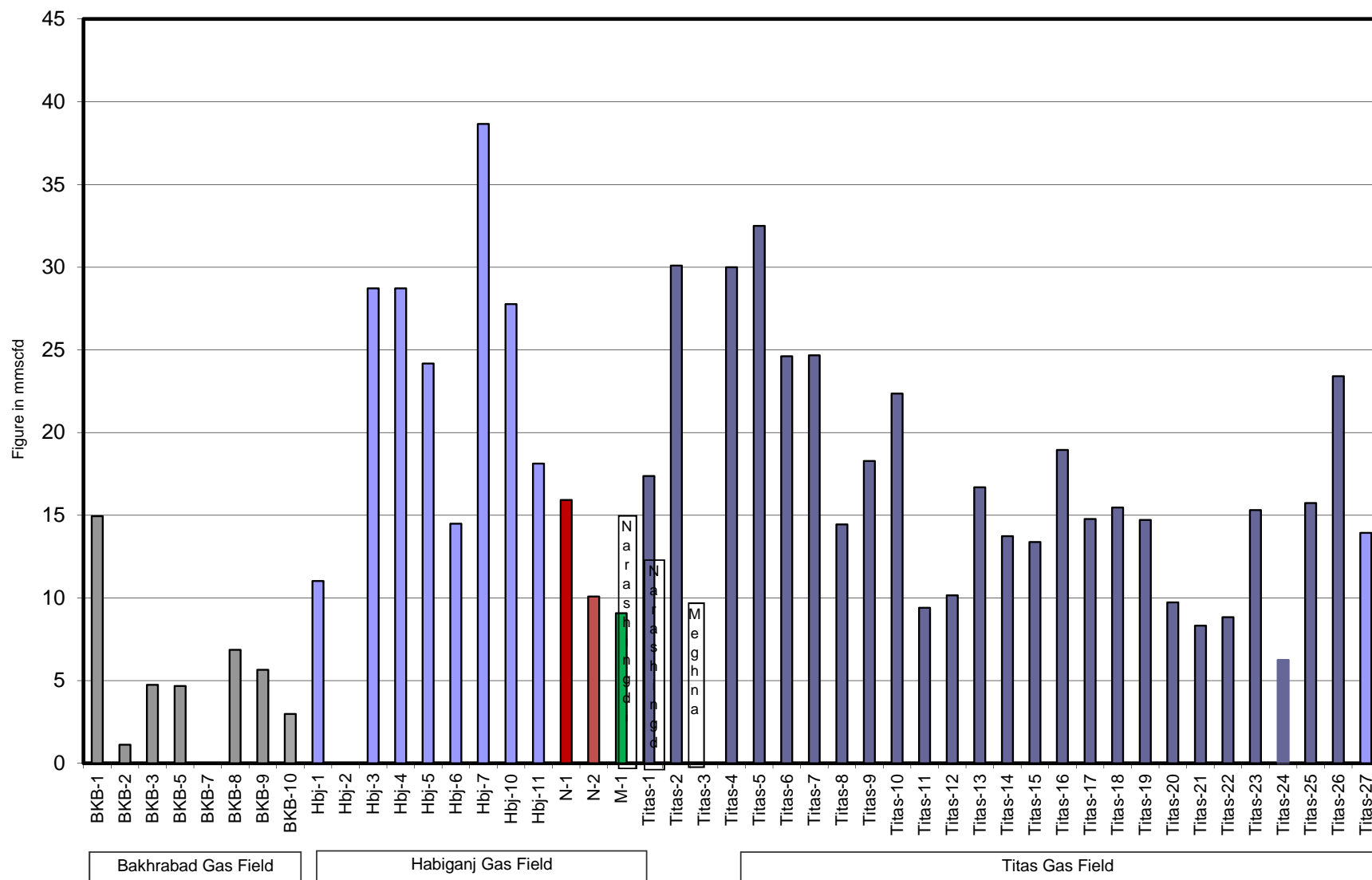


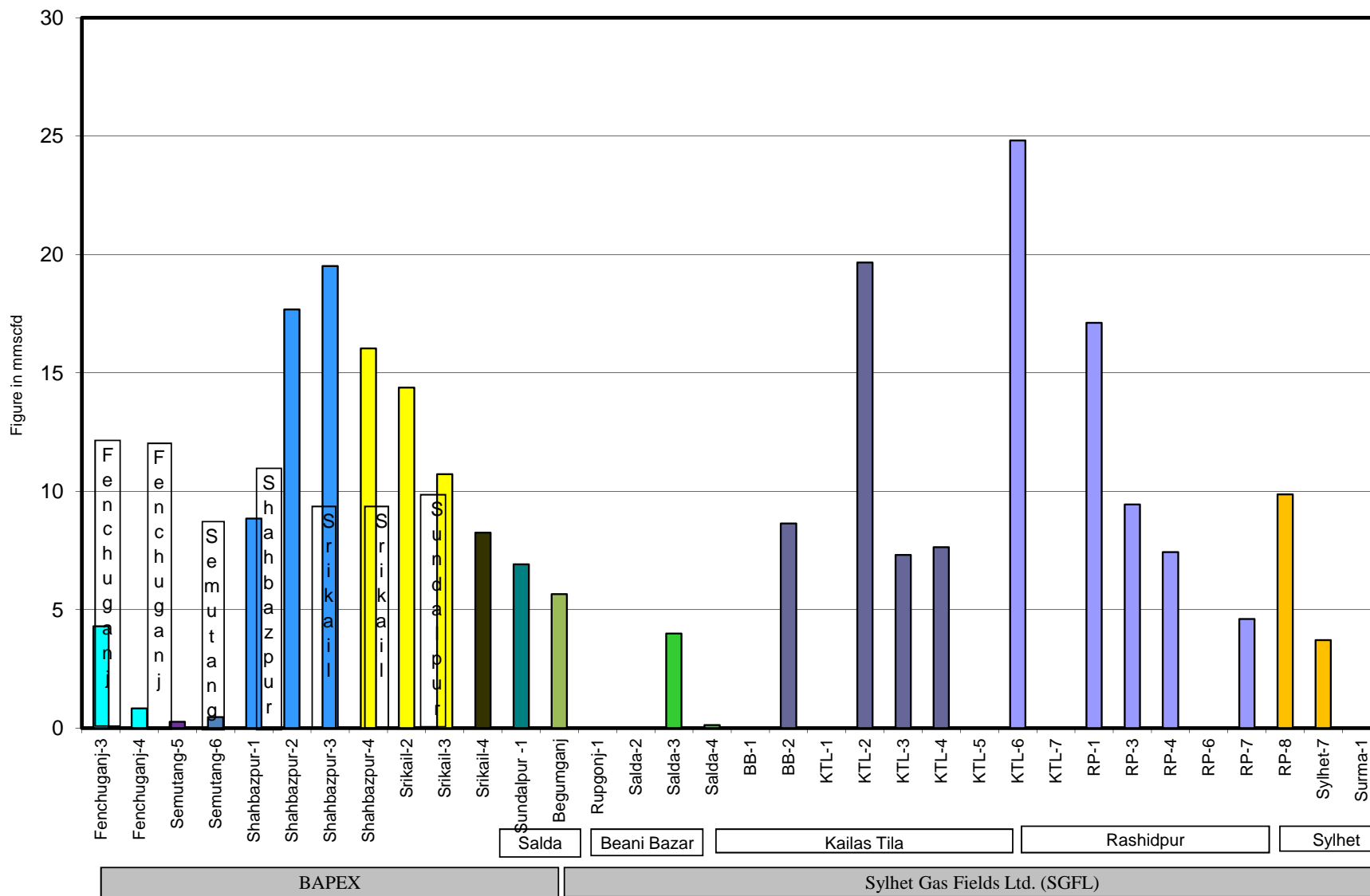
Figure in mmcf
and % of total production

Wellwise Daily Avg. Production- BGFCL June 2019

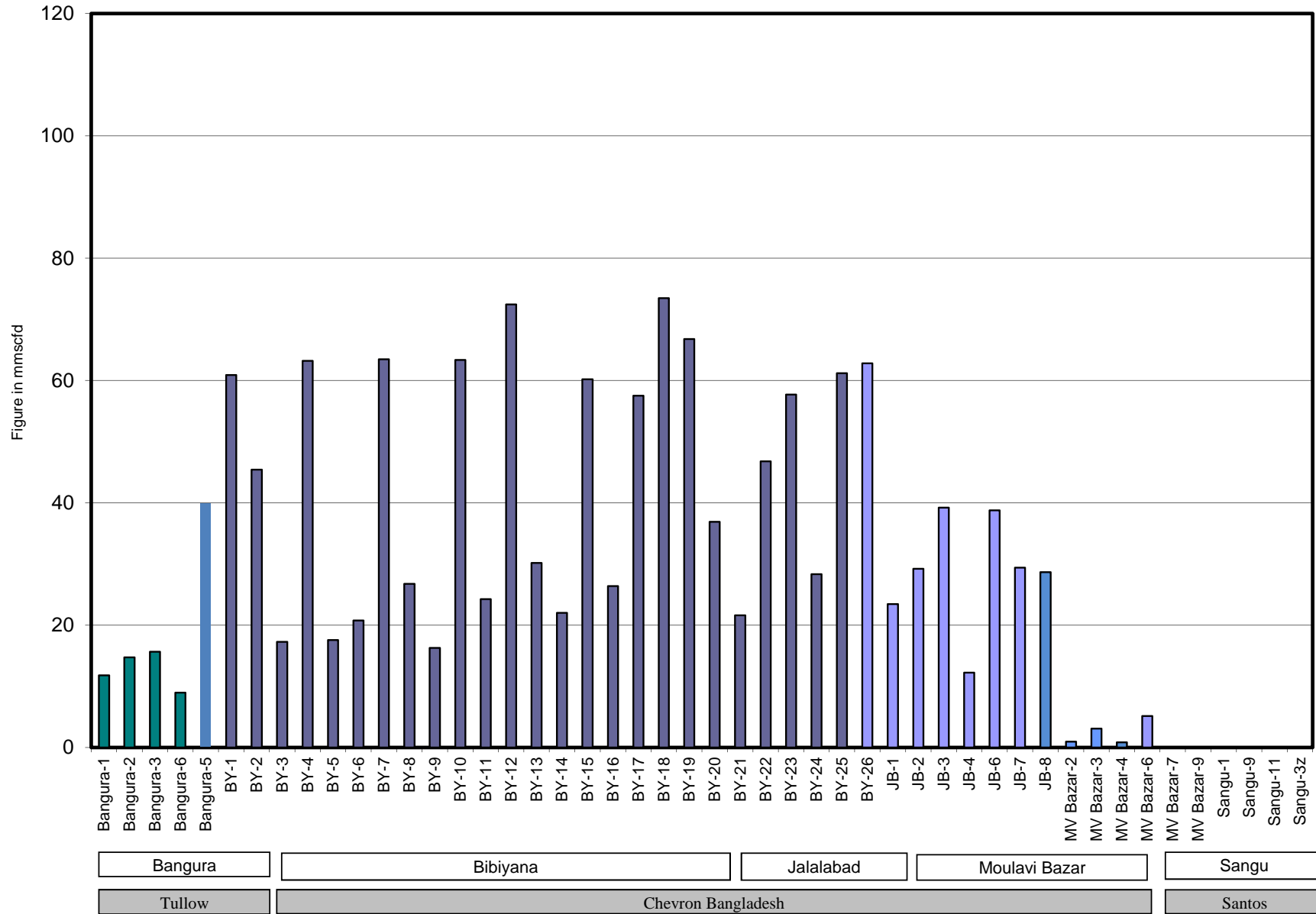


Bangladesh Gas Fields Co. Ltd. (BGFCL)

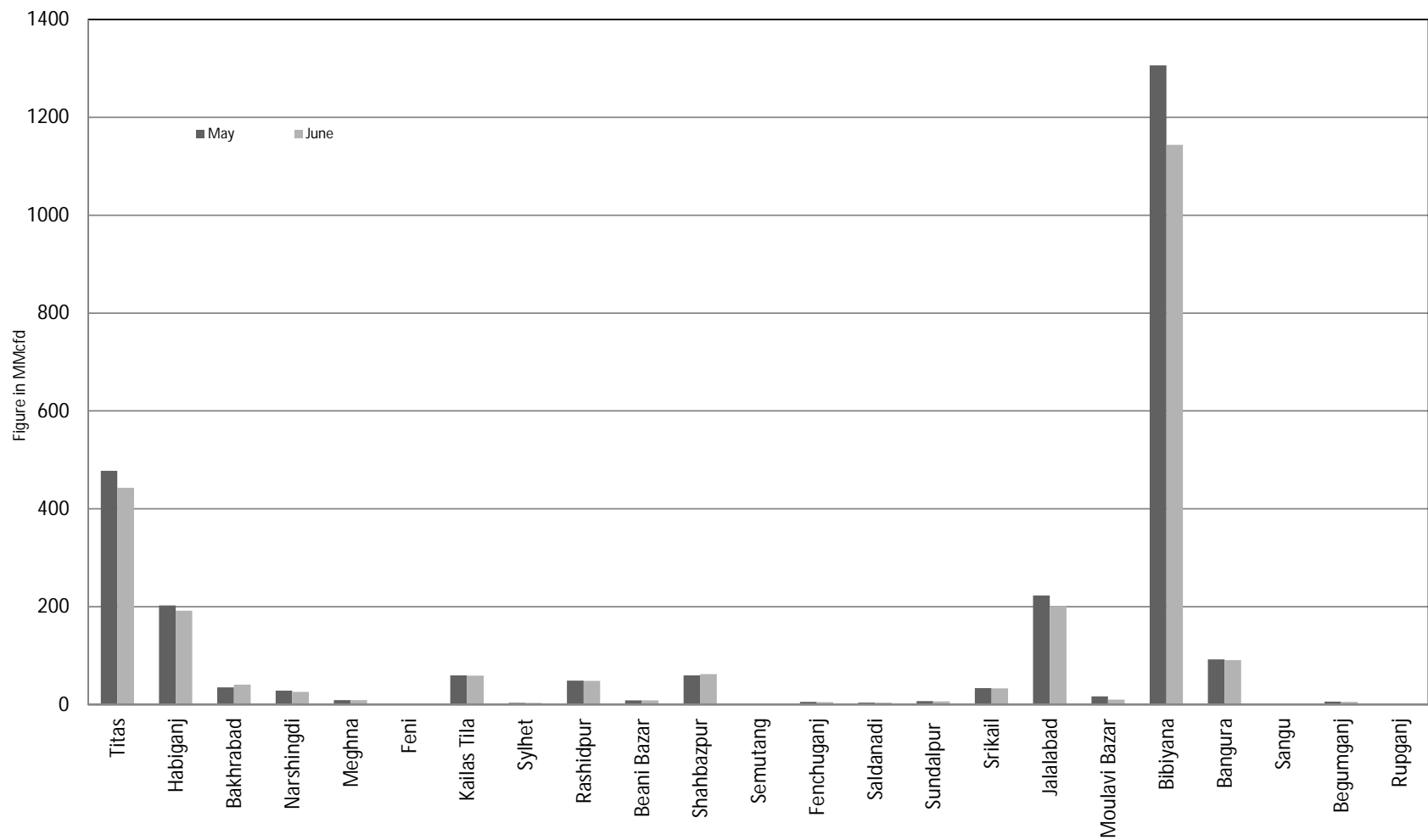
Wellwise Daily Avg. Production- Bapex and SGFL June 2019



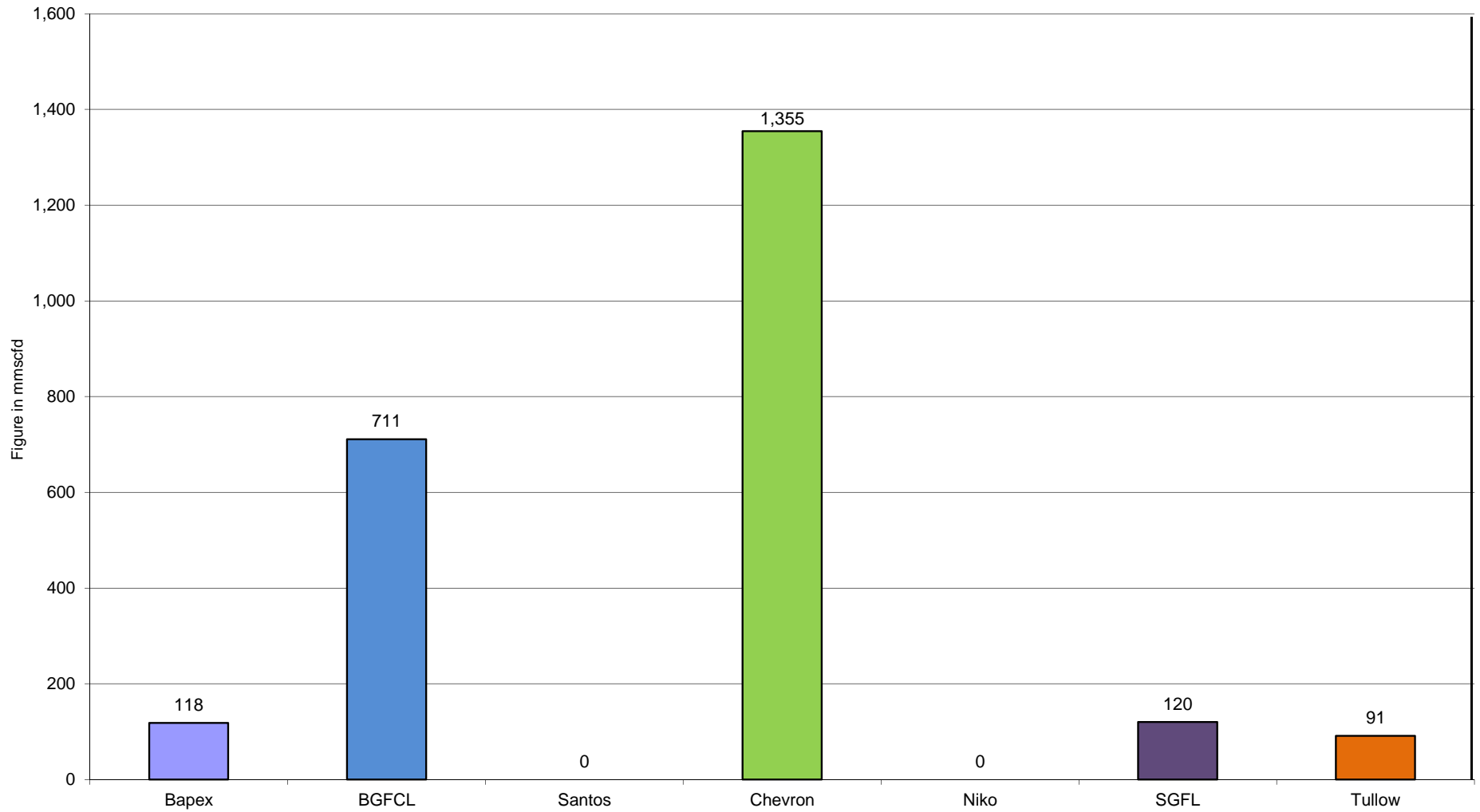
Wellwise Daily Avg. Production- IOC and JVA June 2019



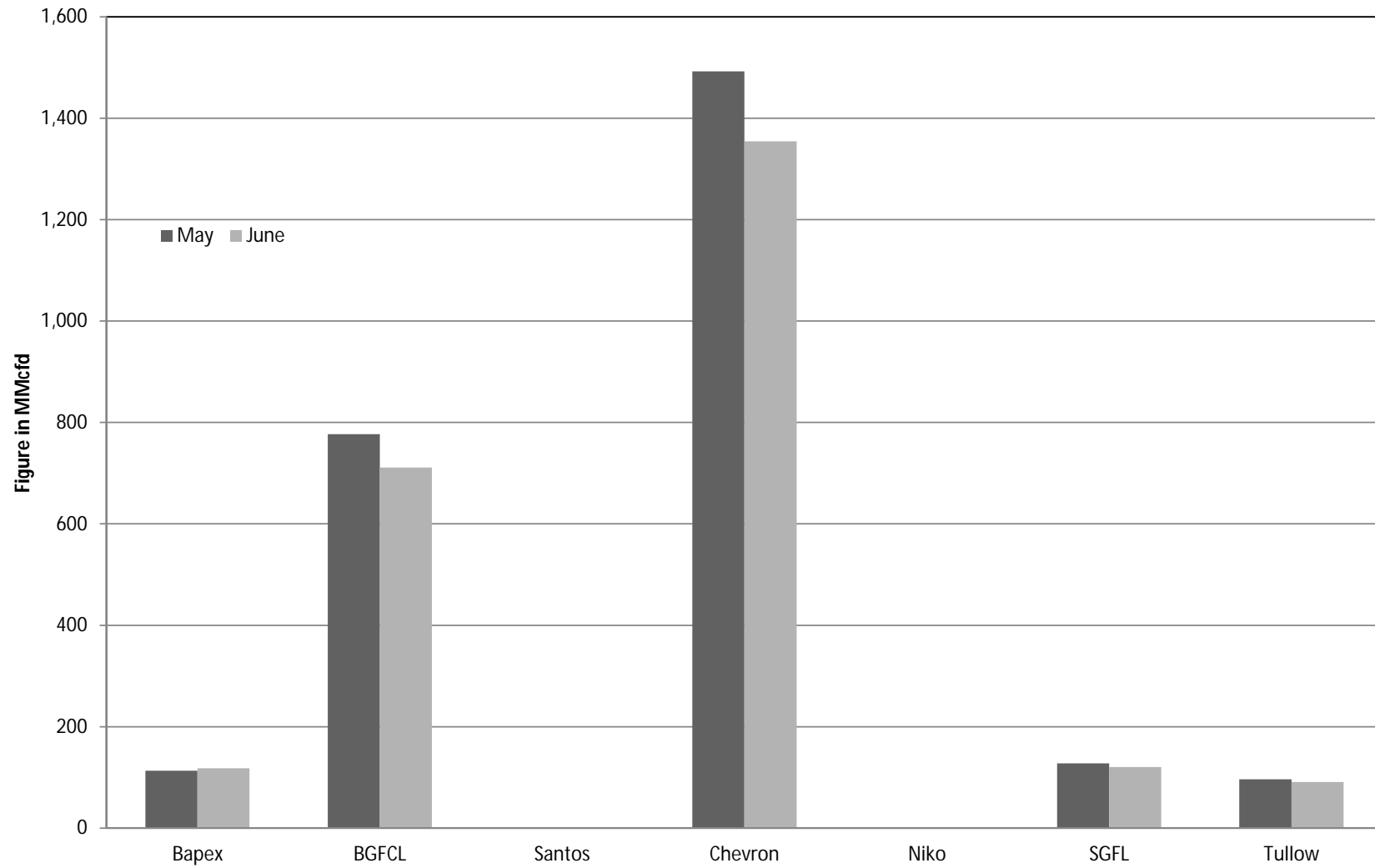
Comparison of fieldwise daily avg. Gas production between May 2019 & June 2019



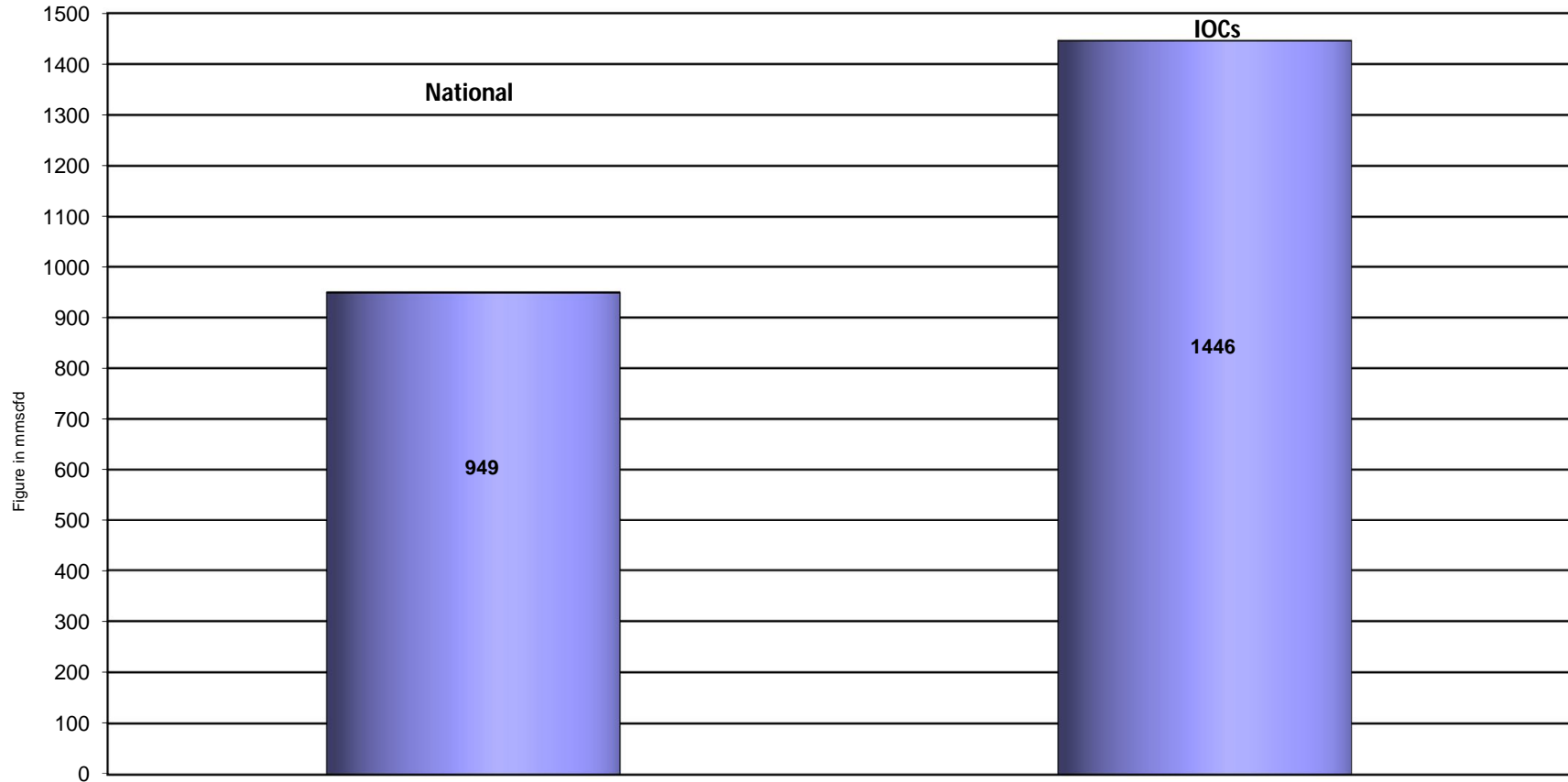
Daily Avg. Production by Operators June 2019



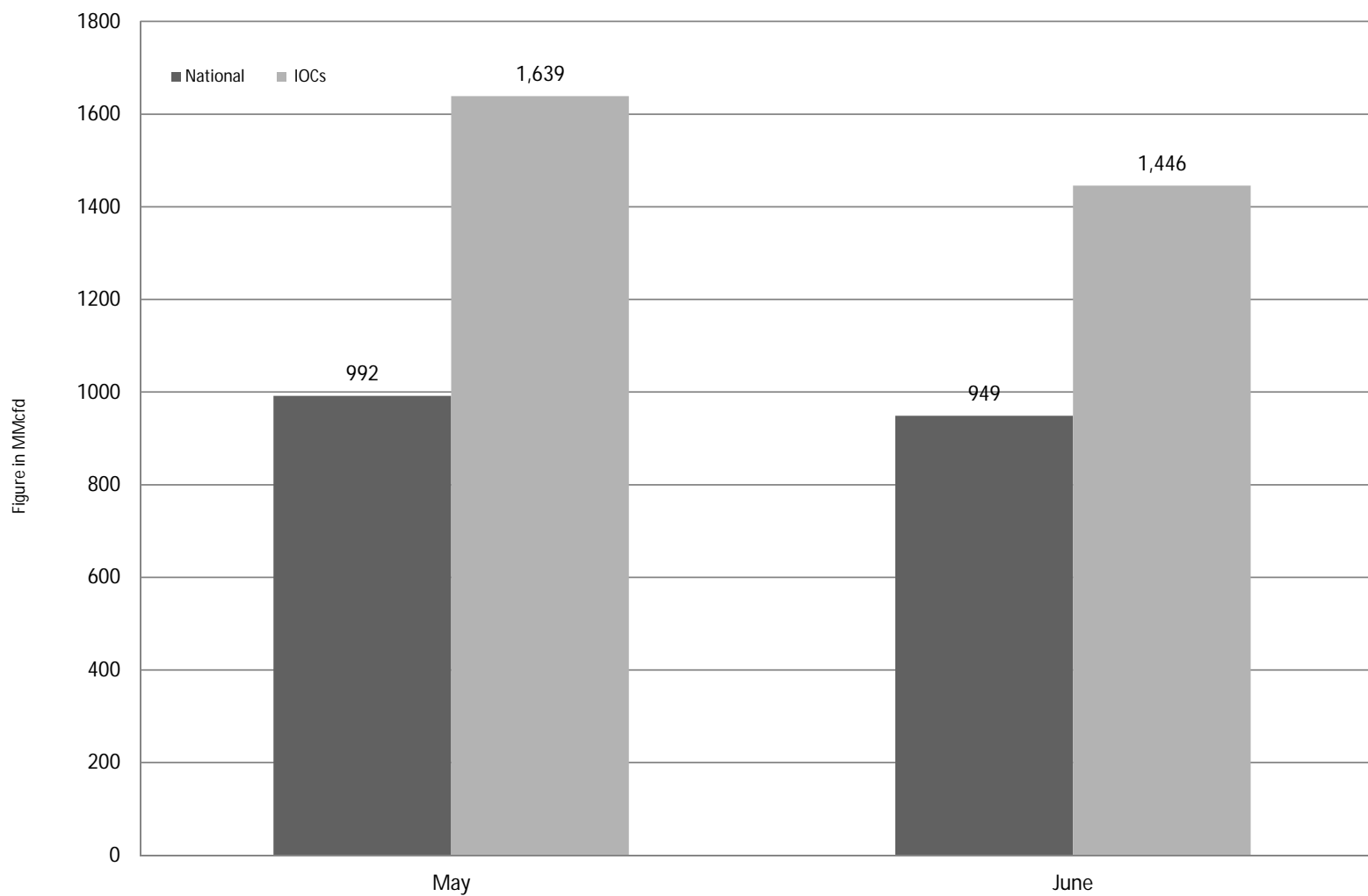
Comparison of operatorwise daily avg. Gas production between May 2019 & June 2019



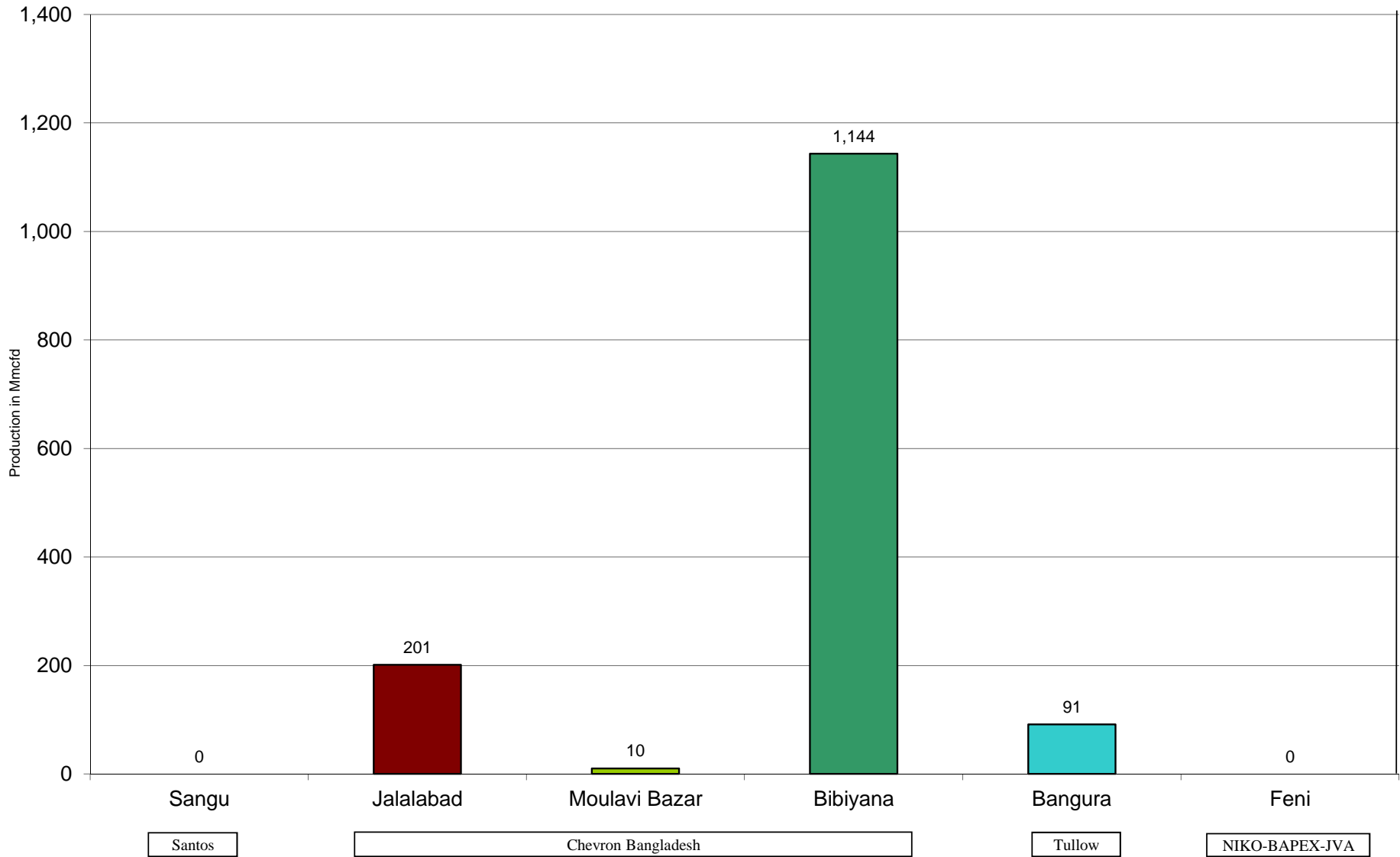
Daily Avg. Production - National Vs. IOCs June 2019



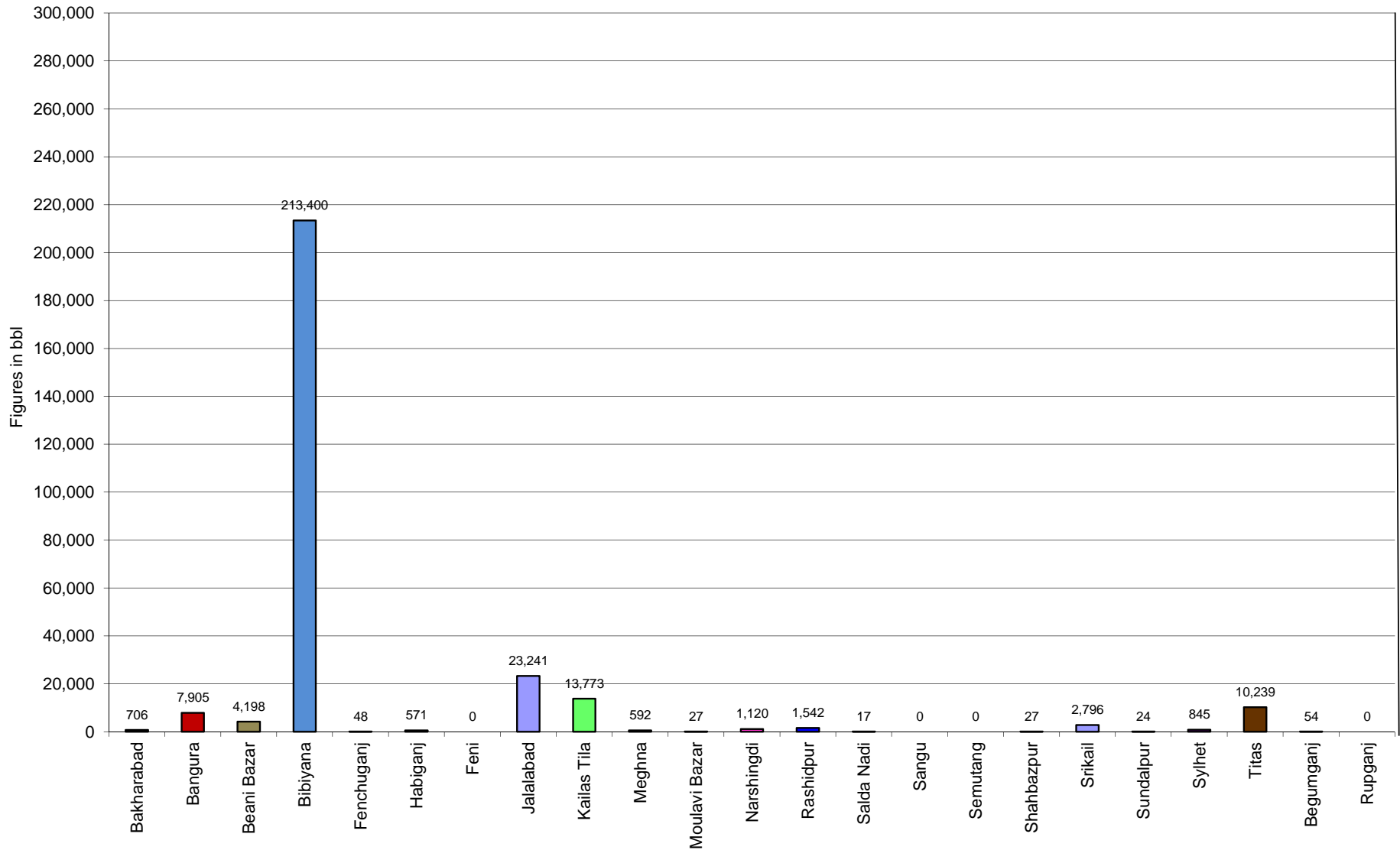
Comparison of daily avg. Gas production - National vs IOC's between May 2019 & June 2019



Daily Avg. Production - IOC and JVA June 2019



Monthly Condensate Production June 2019



Field wise Coal Reserve in Bangladesh

SI No.	Coal Basins	Proved (Mt)	Indicated (Mt)	Inferred (Mt)	Total (Mt)
1	Barapukuria	114.32	211.33	21.06+(43-64)*	346.71+(43-64)*
2	Phulbari	288	226	58	572
3	Khalashpir	-	297.57	225.92	523.49
4	Jamalganj	-	-	1053.9	1053.9
5	Dighipara	-	105	495	600
	Total	402.32	839.9	1896.88-1917.88	3139.10-3160.10

**Resources of VI Seam in second syncline are towards SW of main basin, after Wardell Armstrong*

NOTE: Reserve Figure based on Coal Sector Development Strategy (Final), HCU, PwC

Summary of Reserve and Production of Barapukuria Coal Mine As of 30 June 2019

Coal Initially Place (Proven + Probable)	346,710 kT	346.71 MT
Total Reserve of Seam VI	285,410 kT	285.41 MT
Recoverable from Seam VI Central part(Proven + Probable)	16,540 kT*	16.54 MT
Coal Production in June 2019	129.34 kT	0.13 MT
Cumulative Production as of June 2019	10,747 kT	10.75 MT
Remaining Reserve	5,793 kT	5.79 MT

NOTE: Reserve figure based on Mines and Minerals Development Report ,HCU PwC

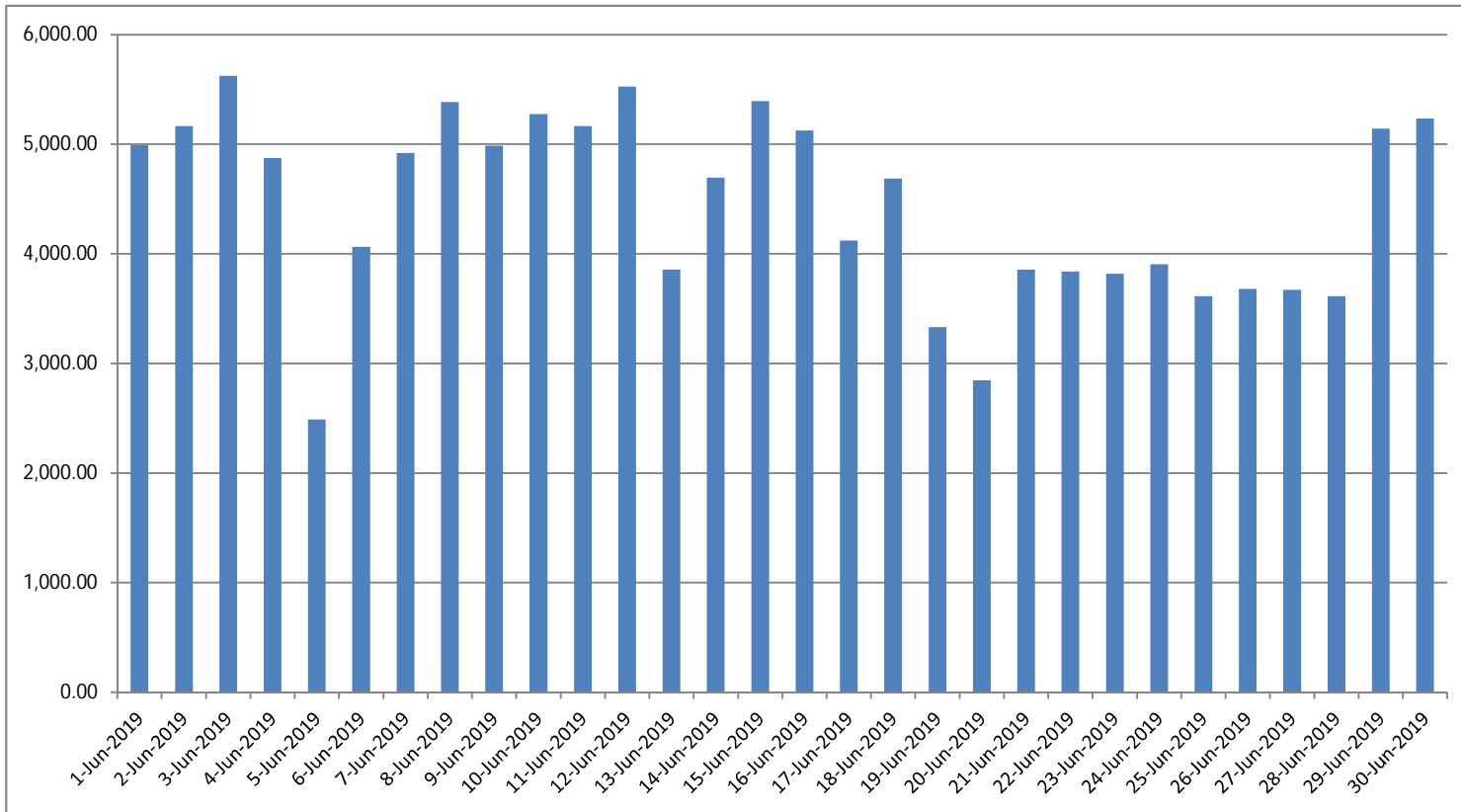
*Figure from BCMCL, M/S Wardell Armstrong. According to Mines and Minerals Development Report ,HCU, PwC this figure is 64.8 Mt

Barapukuria Coal Mine-MPM and P Contract (BCMCL)
Measurement Record: Surface Belt Weigher
Measurement Period: June 2019

Day wise data	Consortium Daily Output (ton)	Consortium Cumulative Total	BCMCL Daily Output	BCMCL Cumulative Total	Remarks
1-Jun-2019	4,992.00	4,992.00	4,992.00	4,992.00	
2-Jun-2019	5,166.00	10,158.00	5,166.00	10,158.00	
3-Jun-2019	5,625.25	15,783.25	5,625.25	15,783.25	
4-Jun-2019	4,873.75	20,657.00	4,873.75	20,657.00	
5-Jun-2019	2,488.25	23,145.25	2,488.25	23,145.25	
6-Jun-2019	4,063.25	27,208.50	4,063.25	27,208.50	
7-Jun-2019	4,921.75	32,130.25	4,921.75	32,130.25	
8-Jun-2019	5,385.25	37,515.50	5,385.25	37,515.50	
9-Jun-2019	4,987.25	42,502.75	4,987.25	42,502.75	
10-Jun-2019	5,274.50	47,777.25	5,274.50	47,777.25	
11-Jun-2019	5,165.25	52,942.50	5,165.25	52,942.50	
12-Jun-2019	5,527.25	58,469.75	5,527.25	58,469.75	
13-Jun-2019	3,856.00	62,325.75	3,856.00	62,325.75	
14-Jun-2019	4,696.25	67,022.00	4,696.25	67,022.00	
15-Jun-2019	5,392.50	72,414.50	5,392.50	72,414.50	
16-Jun-2019	5,126.50	77,541.00	5,126.50	77,541.00	
17-Jun-2019	4,121.75	81,662.75	4,121.75	81,662.75	
18-Jun-2019	4,687.00	86,349.75	4,687.00	86,349.75	
19-Jun-2019	3,332.50	89,682.25	3,332.50	89,682.25	
20-Jun-2019	2,845.75	92,528.00	2,845.75	92,528.00	
21-Jun-2019	3,856.00	96,384.00	3,856.00	96,384.00	
22-Jun-2019	3,837.75	100,221.75	3,837.75	100,221.75	
23-Jun-2019	3,818.50	104,040.25	3,818.50	104,040.25	
24-Jun-2019	3,905.50	107,945.75	3,905.50	107,945.75	
25-Jun-2019	3,615.00	111,560.75	3,615.00	111,560.75	
26-Jun-2019	3,681.25	115,242.00	3,681.25	115,242.00	
27-Jun-2019	3,672.50	118,914.50	3,672.50	118,914.50	
28-Jun-2019	3,615.25	122,529.75	3,615.25	122,529.75	
29-Jun-2019	5,143.25	127,673.00	5,143.25	127,673.00	
30-Jun-2019	5,235.00	132,908.00	5,235.00	132,908.00	

less Difference in Water Content:	7229.1
Less Out of Seam dilution:	0
Water treatment plant coal	3662.8
Output (tons) measured by Belt	129,341.70
Tonnes mined in DARR	0
Net Output after removing DARR	129,341.70

Barapukuria Coal Mine Daywise Data Graph for June 2019



আসুন, যানবাহনসমূহকে অটোগ্যাসে রূপান্তর করি...

জাতীয় সম্পদ প্রাকৃতিক গ্যাস সাশ্রয় করি...

facebook

"Energy misused, cannot be excused"

আমাদের ঘরে যদি এখনো কয়েল স্টার্টার যুক্ত টিউবলাইট থেকে থাকে, আসুন আজই LED টিউবলাইট দ্বারা প্রতিস্থাপন করি।

HYDROCARBON UNIT ON FACEBOOK

“আসুন আমাদের জাতীয় সম্পদ প্রাকৃতিক গ্যাস সাশ্রয় করি”

১। **LPG** ব্যবহার করুন..

অবৈধ গ্যাস সংযোগ থেকে বিরত থাকুন

২। **CNG** নয়, অকটেন দিয়ে গাড়ি চালান...

গাড়ির ইঞ্জিনের আয়ুষ্কাল বাড়ান

চলুন আজই যানবাহনসমূহ AUTO GAS (LPG) এ রূপান্তর করি...

- * CNG এর তুলনায় LPG কনভারশনে ৫০% কম খরচ হয়
- * ৩-৫ মিনিটে ট্যাংকে ফুয়েল ভর্তি হয়, লম্বা লাইনে দাঁড়িয়ে অপেক্ষা করার প্রয়োজন পরে না
- * CNG এর তুলনায় সিলিন্ডারে জায়গা, ওজন ও প্রেশার কম দরকার
- * রক্ষণাবেক্ষণের খরচ কম
- * পেট্রলের তুলনায় AUTO GAS -এ খরচ প্রায় ৫০% কম
- * গ্যাসোলিন ও ডিজেলের তুলনায় নিঃসরণ কম

Hydrocarbon Unit

Energy & Mineral Resources Division
Ministry of Power, Energy & Mineral Resources
153, Pioneer Road
Segunbagicha, Dhaka-1000
www.hcuro.gov.bd