



# Gas & Coal Reserve And Production

June 2017



## **Table of Contents**

<b>Gas Report</b>	<b>Page No.</b>
Summary	1
summary of Reserve and Production	2
Production comparison between May 2017 & June 2017	3
Monthly Production by Fields & Wells up to June 2017	4-11
Monthly Condensate Production by Fields up to June 2017	12-13
 <b>Chart</b>	
Reserve, Production and Remaining Reserve as of June 2017	14
Daily Average Gas Production from January 2012 to June 2017	15
Field wise Daily Average Production as of June 2017	17
Well wise Daily Average Production-BGFCL as of June 2017	17
Well wise Daily Average Production-BAPEX and SGFL, June 2017	18
Well wise Daily Average Production-IOC and JVA, June 2017	19
Comparison of Field wise Daily Average Gas Production between May17 & June.17	20
Daily Average Production by Operator, June 2017	21
Comparison of Operator wise daily average Production between May17 & June.17	22
Daily Average Production – National vs.IOC's, June 2017	23
Comparison of daily average Gas Production- National vs IOC's between May 17 & June. 2017	24
Daily Average Production IOC's and JVA, June 2017	25
Monthly Condensate Production, June 2017	26
 <b>Coal Report</b>	
Summary	27-28
Barapukuria Coal Mine-MPM and P Contract (BCMCL)	29
Barapukuria Coal Mine Daywise Data Graph for June 2017	30

## Summary of Reserve and Production As of 30 June 2017

<b>Gas Initially Place (Proven + Probable)</b>	<b>35,796.19 Bcf</b>	<b>35.80 Tcf</b>
<b>Recoverable (Proven + Probable)</b>	<b>28,523.40 Bcf</b>	<b>28.52 Tcf</b>
<b>Gas Production in June 2017</b>	<b>77.06 Bcf</b>	<b>0.08 Tcf</b>
<b>Cumulative Production as of June 2017</b>	<b>15002.61 Bcf</b>	<b>15.00 Tcf</b>
<b>Remaining Reserve</b>	<b>13,520.79 Bcf</b>	<b>13.52 Tcf</b>

*NOTE: Reserve figure based on "Updated Report on Bangladesh Gas Reserve Estimation 2010", prepared by Gustavson Associates LLC, USA*

# Summary of Reserve and Production



(As of June 2017)

SI No.	Field			Gas Prod. in June.'17	Cum. Gas Production	Gas in Bcf	Liquid in '000 BBL
		2P	GIIP			2P Reserve	Remaining Reserve
1	Begumganj	47.0	33.0	0.0	0.9	32.1	0
2	Shahbazpur	415.0	261.0	1.0	32.2	228.8	3
3	Semutang	654.0	318.0	0.0	12.4	305.6	5
4	Fenchuganj	483.0	329.0	0.6	151.4	177.6	113
5	Salda Nadi	393.0	275.0	0.1	89.3	185.7	58
6	Srikail*	230.0	161.0	1.1	62.1	98.9	76
7	Sundalpur *	62.2	50.2	0.0	9.8	40.4	0
8	Rupganj	48.0	33.6	0.1	0.4	33.2	1
<b>Bapex</b>		<b>2,332.2</b>	<b>1,460.8</b>	<b>3.0</b>	<b>358.5</b>	<b>1,102.3</b>	<b>255</b>
8	Meghna	122.0	101.0	0.4	62.1	38.9	96
9	Narshingdi	405.0	345.0	0.8	185.0	160.0	394
10	Kamta	72.0	50.0	0.0	21.1	28.9	4
11	Habiganj	3,981.0	2,787.0	6.6	2,306.9	480.1	122
12	Bakhrabad	1,825.0	1,387.0	1.0	794.9	592.1	1,012
13	Titas	9,039.0	7,582.0	16.5	4,361.2	3,220.8	4,986
<b>BGFCL</b>		<b>15,444.0</b>	<b>12,252.0</b>	<b>25.4</b>	<b>7,731.2</b>	<b>4,520.8</b>	<b>6,614</b>
14	Sangu	976.0	771.0	0.0	489.5	281.5	37
<b>Santos/Cairn</b>		<b>976.0</b>	<b>771.0</b>	<b>0.0</b>	<b>489.5</b>	<b>281.5</b>	<b>37</b>
15	Bibiyana	5,321.0	4,532.0	32.9	2,920.3	1,611.7	16,203
16	Moulavi Bazar	630.0	494.0	1.0	304.9	189.1	116
17	Jalalabad**	1,346.0	1,184.0	7.6	1,141.2	42.8	9,567
<b>Chevron</b>		<b>7,297.0</b>	<b>6,210.0</b>	<b>41.5</b>	<b>4,366.5</b>	<b>1,843.5</b>	<b>25,886</b>
18	Feni	185.0	130.0		63.0	67.0	110
<b>Niko</b>		<b>185.0</b>	<b>129.6</b>		<b>63.0</b>	<b>66.6</b>	<b>110</b>
19	Kailas Tila	3,463.0	2,880.0	2.0	692.0	2,188.0	7,500
20	Sylhet	580.0	408.0	0.2	211.7	196.3	779
21	Rashidpur	3,887.0	3,134.0	1.7	598.6	2,535.4	756
22	Chattak	677.0	474.0	0.0	25.8	448.2	4
23	Beani Bazar	225.0	137.0	0.4	90.1	46.9	1,487
<b>SGFL</b>		<b>8,832.0</b>	<b>7,033.0</b>	<b>4.2</b>	<b>1,618.2</b>	<b>5,414.8</b>	<b>10,526</b>
24	Bangura	730.0	621.0	3.0	375.8	245.2	920
<b>Tullow</b>		<b>730.0</b>	<b>621.0</b>	<b>3.0</b>	<b>375.8</b>	<b>245.2</b>	<b>920</b>
25	Kutubdia	65.0	46.0	0.0	0.0	46.0	0
<b>Total</b>		<b>35,796.2</b>	<b>28,523.4</b>	<b>77.06</b>	<b>15,002.6</b>	<b>13,520.8</b>	<b>44,348</b>

\* Preliminary reserve estimated by BAPEX

\*\* 2P reserve estimated by Petrobangla

## Production comparison between Apr. 2017 & May. 2017



**HYDROCARBON UNIT**  
Energy & Mineral Resources Division

SI No.	Field	Gas Prod. (MMcf) in May'17	Daily Avg. (MMcfd) in May'17	Gas Prod. (MMcf) in June'17	Daily Avg. (MMcfd) in June'17
1	Begumganj	0	0	0	0
2	Shahbazpur	773	25	1026	34
3	Semutang	46	1	36	1
4	Fenchuganj	650	21	623	21
5	Salda Nadi	138	4	135	4
6	Srikail	1187	38	1127	38
7	Sundalpur	0	0	0	0
8	Rupganj	155	5	95	3
<b>Bapex</b>		<b>2949</b>	<b>95</b>	<b>3042</b>	<b>101</b>
8	Meghna	395	13	381	13
9	Narshingdi	881	28	845	28
10	Kamta	0	0	0	0
11	Habiganj	6837	221	6614	220
12	Bakhrabad	1064	34	1048	35
13	Titas	17259	557	16517	551
<b>BGFCL</b>		<b>26436</b>	<b>853</b>	<b>25405</b>	<b>847</b>
14	Sangu	0	0	0	0
<b>Santos/Cairn</b>		<b>0</b>	<b>0</b>	<b>0</b>	<b>0</b>
15	Bibiyana	37835	1220	32946	1098
16	Moulavi Bazar	1198	39	956	32
17	Jalalabad	7986	258	7579	253
<b>Chevron</b>		<b>47018</b>	<b>1517</b>	<b>41481</b>	<b>1383</b>
18	Feni	0	0	0	0
<b>Niko</b>		<b>0</b>	<b>0</b>	<b>0</b>	<b>0</b>
19	Kailas Tila	2015	65	1957	65
20	Sylhet	218	7	183	6
21	Rashidpur	1715	55	1656	55
22	Chattak	0	0	0	0
23	Beani Bazar	416	13	379	13
<b>SGFL</b>		<b>4363</b>	<b>141</b>	<b>4176</b>	<b>139</b>
24	Bangura	3072	99	2953	98
<b>Tullow</b>		<b>3072</b>	<b>99</b>	<b>2953</b>	<b>98</b>
25	Kutubdia	0	0	0	0
<b>Total</b>		<b>83838</b>	<b>2704</b>	<b>77056</b>	<b>2569</b>

## Monthly Production by Field and Well upto june 2017



HYDROCARBON UNIT

Energy & Mineral Resources Division

Figures in mmscf

Well	Jan	Feb	Mar	Apr	May	Jun	Jul	Aug	Sep	Oct	Nov	Dec	Total	Cumulative	2016	2015	2014
<b>Field :</b>	<b>Bakharabad</b>																
BKB-1	0	0	0	0	0	0							0	141,167	0	1,030	1,343
BKB-2	51.99	46	51	47	45	44							286	85,869	731	873	844
BKB-3	190.62	171	189	178	169	185							1,083	157,690	2,223	1,620	1,886
BKB-4	Production Suspended													55,872			
BKB-5	153.29	137	151	148	156	160							904	56,047	1,814	1,821	416
BKB-6	Production Suspended													50,069			
BKB-7	0	0	0	0	0	0							0	107,750	0	1,399	1,387
BKB-8	344.65	308	343	328	295	275							1,893	122,674	4,142	3,536	3,099
BKB-9	354.45	317	349	332	286	276							1,914	16,068	4,160	4,287	4,705
BKB-10	151.33	133	143	117	113	108							765	1,689	924		
<b>Field Total:</b>	<b>1,246</b>	<b>1,112</b>	<b>1,226</b>	<b>1,149</b>	<b>1,064</b>	<b>1,048</b>							<b>6,846</b>	<b>794,894</b>	<b>13,070</b>	<b>14,565</b>	<b>13,680</b>
<b>Daily Avg.(mmscfd)</b>	40	40	40	38	34	35							32		422	470	441
<b>Field :</b>	<b>Bangura</b>																
Bangura-1	424	379	410	388	401	387							2,389	82,114	4,886	5,316	5,201
Bangura-2	731	653	708	669	691	662							4,115	69,014	9,200	10,167	10,490
Bangura-3	660	708	770	729	757	728							4,352	85,151	10,038	10,942	11,173
Bangura-6	68	297	342	808	388	805							2,708	2,708			
Bangura-5	901	803	859	373	835	371							4,141	136,775	11,514	12,347	12,436
<b>Field Total:</b>	<b>2,784</b>	<b>2,840</b>	<b>3,088</b>	<b>2,968</b>	<b>3,072</b>	<b>2,953</b>							<b>17,706</b>	<b>375,762</b>	<b>35,639</b>	<b>38,773</b>	<b>39,300</b>
<b>Daily Avg.(mmscfd)</b>	90	101	100	99	99	98							84		1,150	1,251	1,268
<b>Field :</b>	<b>Beani Bazar</b>																
BB-1	135	126	156	148	144	121							830	35,287	33	0	62
BB-2	275	257	281	267	272	258							1,610	54,788	3,431	3,477	3,479
<b>Field Total:</b>	<b>410</b>	<b>383</b>	<b>437</b>	<b>415</b>	<b>416</b>	<b>379</b>							<b>2,439</b>	<b>90,075</b>	<b>3,464</b>	<b>3,477</b>	<b>3,541</b>
<b>Daily Avg.(mmscfd)</b>	13	14	14	14	13	13							12		112	112	114
<b>Field :</b>	<b>Bibiyana</b>																
BY-1	2,869	2,670	2,967	2,954	3,106	2,837							17,403	327,950	35,050	31,887	33,319
BY-2	2,021	1,857	2,088	2,001	2,025	1,919							11,911	240,993	20	16,096	30,474
BY-3	1,165	1,077	1,176	1,077	1,162	1,006							6,662	225,779	16,873	19,957	20,529
BY-4	490	465	527	389	563	450							2,884	148,291	7,322	11,070	13,574

## Monthly Production by Field and Well upto june 2017



HYDROCARBON UNIT

Energy & Mineral Resources Division

Figures in mmscf

Well	Jan	Feb	Mar	Apr	May	Jun	Jul	Aug	Sep	Oct	Nov	Dec	Total	Cumulative	2016	2015	2014
BY-5	713	675	727	641	715	616							4,087	161,806	9,229	10,856	15,094
BY-6	1,064	1,011	1,140	983	1,157	707							6,063	204,622	15,208	16,520	18,268
BY-7	2,353	2,432	2,744	2800	2,913	2,715							15,957	204,511	33,040	10,895	9,515
BY-8	1,037	1,077	1,164	1165	1,164	1,017							6,624	119,461	2,987	5,237	15,082
BY-9	492	429	577	502	498	503							3,001	117,279	6,820	7,197	8,369
BY-10	2,208	2,556	2,659	2798	2,886	2,574							15,682	286,758	33,582	32,542	35,076
BY-11	659	562	639	593	570	518							3,541	104,543	9,357	12,458	17,815
BY-12	822	669	791	740	703	647							4,372	111,957	10,574	12,677	15,676
BY-13	1,209	843	1,079	1043	1,034	946							6,155	54,101	15,603	19,645	12,699
BY-14	1,459	1,198	1,375	1360	1,422	1,189							8,004	71,741	15,170	25,721	22,846
BY-15	1,932	1,573	1,092	1425	1,337	1,184							8,545	62,060	17,698	16,439	19,378
BY-16	1,221	950	1,228	1123	1,125	889							6,536	45,803	15,844	18,446	4,978
BY-17	1,302	1,139	1,380	1284	1,460	1,195							7,760	52,617	15,463	23,304	6,090
BY-18	2,668	2,356	2,562	2517	2,617	2,149							14,869	71,273	33,072	23,332	
BY-19	953	827	900	826	778	691							4,974	19,048	9,383	4,691	
BY-20	727	604	654	609	560	480							3,634	27,105	9,282	14,190	
BY-21	1,222	952	1,312	1212	1,186	882							6,765	19,073	8,533	3,775	
BY-22	2,620	2,321	2,462	2196	1,954	1,709							13,261	69,213	33,387	22,565	
BY-23	395	563	635	546	478	516							3,132	7,803	4,405	266	
BY-24	1,219	1,037	1,264	1120	1,214	1,021							6,875	38,287	15,265	13,497	2,650
BY-25	2,692	2,453	2,642	2576	2,678	2,333							15,375	61,918	33,282	13,260	
BY-26	2,810	2,379	2,633	2466	2,532	2,251							15,071	66,337	33,167	18,099	
<b>Field Total:</b>	<b>38322</b>	<b>34676</b>	<b>38416</b>	<b>36945</b>	<b>37835</b>	<b>32946</b>							<b>219,142</b>	<b>2,920,328</b>	<b>439,615</b>	<b>404,621</b>	<b>298,781</b>
<b>Daily Avg.(mmscfd)</b>	1236	1238	1239	1232	1220	1098							1,034		14,181	13,052	9,638
<b>Field :</b>	<b>Chattak</b>																
Ch-1	Production Suspended													25,834			
<b>Field Total:</b>														<b>25,834</b>			
<b>Daily Avg.(mmscfd)</b>																	
<b>Field :</b>	<b>Fenchuganj</b>																
Fenchuganj-2	0	0	0	0	0	0							0	38,169	0	0	0
Fenchuganj-3	599	539	591	572	604	578							3,482	84,742	7,606	7,564	7,755

## Monthly Production by Field and Well upto june 2017



Figures in mmscf

Well	Jan	Feb	Mar	Apr	May	Jun	Jul	Aug	Sep	Oct	Nov	Dec	Total	Cumulative	2016	2015	2014
Fenchuganj-4	117	92	71	57	46	45							428	28,453	3,189	5,834	6,182
<b>Field Total:</b>	<b>715</b>	<b>630</b>	<b>662</b>	<b>630</b>	<b>650</b>	<b>623</b>							<b>3,910</b>	<b>151,363</b>	<b>10,795</b>	<b>13,398</b>	<b>13,937</b>
<b>Daily Avg.(mmscfd)</b>	23	23	21	21	21	21							18		348	432	450

### Field : Feni

Feni-1	Production Suspended												34,214			
Feni-2	Production Suspended												6,119			
Feni-3	Production Suspended												2,176			
Feni-4	Production Suspended												14,386			
Feni-5	Production Suspended												6,127			
<b>Field Total:</b>													<b>63,023</b>			
<b>Daily Avg.(mmscfd)</b>																

### Field : Habiganj

Hbj-1	0	0	0	0	0	0							0	275,901	0	0	0
Hbj-2	0	0	0	0	0	0							0	275,704	0	0	0
Hbj-3	1,122	1,012	1,117	1,081	1,116	1,077							6,524	357,375	13,227	13,080	13,075
Hbj-4	1,122	1,012	1,117	1,081	1,116	1,077							6,524	351,833	13,227	13,080	13,075
Hbj-5	810	731	807	780	806	778							4,712	283,392	9,552	9,446	9,442
Hbj-6	469	422	466	451	466	450							2,724	153,955	5,523	5,462	5,460
Hbj-7	1,245	1,128	1,256	1,204	1,240	1,203							7,276	231,296	14,685	14,659	14,586
Hbj-8	0	0	0	0	0	0							0	11,023	0	0	
Hbj-9	0	0	0	0	0	0							0	52,652	0	0	
Hbj-10	1,194	1,085	1,209	1,159	1,194	1,158							6,997	232,144	14,629	14,659	14,586
Hbj-11	901	818	911	873	899	872							5,274	81,605	11,247	11,367	11,311
<b>Field Total:</b>	<b>6,863</b>	<b>6,207</b>	<b>6,882</b>	<b>6,629</b>	<b>6,837</b>	<b>6,614</b>							<b>40,031</b>	<b>2,306,880</b>	<b>82,091</b>	<b>81,752</b>	<b>81,534</b>
<b>Daily Avg.(mmscfd)</b>	221	222	222	221	221	220							189		2,648	2,637	2,630

### Field : Jalalabad

JB-1	939	851	869	821	831	701							5,011	231,169	11,951	18,014	18,100
JB-2	1,363	1,198	1,280	1,233	1,252	1,201							7,527	259,633	17,057	20,012	21,651



## Monthly Production by Field and Well upto june 2017



HYDROCARBON UNIT

Energy & Mineral Resources Division

Figures in mmscf

Well	Jan	Feb	Mar	Apr	May	Jun	Jul	Aug	Sep	Oct	Nov	Dec	Total	Cumulative	2016	2015	2014
JB-3	1,775	1,600	1,736	1667	1,663	1,399							9,841	313,804	21,086	26,552	26,644
JB-4	602	511	609	590	625	586							3,523	269,658	8,313	20,427	23,077
JB-6	1,778	1,600	1,736	1668	1,670	1,641							10,093	32,529	19,136	3,300	
JB-7	623	623	731	699	692	850							4,217	10,231	5,254	760	
JB-8	1,339	1,196	1,310	1256	1,252	1,201							7,554	24,178	16,252	372	
<b>Field Total:</b>	<b>8,418</b>	<b>7,579</b>	<b>8,272</b>	<b>7,933</b>	<b>7,986</b>	<b>7,579</b>							<b>47,766</b>	<b>1,141,201</b>	<b>99,048</b>	<b>89,437</b>	<b>89,473</b>
<b>Daily Avg.(mmscfd)</b>	272	271	267	264	258	253							225		3,195	2,885	2,886
<b>Field :</b>	<b>Kailas Tila</b>																
KTL-1	0	0	0	0	0	0							0	204,347	0	0	1,122
KTL-2	636	572	531	619	635	608							3,602	167,316	7,282	7,111	7,064
KTL-3	281	254	237	273	281	272							1,597	133,215	5,003	5,920	5,907
KTL-4	310	280	292	293	301	323							1,798	90,878	3,499	4,009	4,493
KTL-5	0	0	0	0	0	0							0	17,923	0	0	322
KTL-6	784	712	678	772	798	754							4,498	77,551	8,975	8,732	8,685
KTL-7	0	0	0	0	0	0							0	816	329	487	
<b>Field Total:</b>	<b>2,011</b>	<b>1,818</b>	<b>1,738</b>	<b>1,957</b>	<b>2,015</b>	<b>1,957</b>							<b>11,496</b>	<b>692,046</b>	<b>25,088</b>	<b>26,259</b>	<b>27,592</b>
<b>Daily Avg.(mmscfd)</b>	65	59	56	65	65	65							54		809	847	890
<b>Field :</b>	<b>Kamta</b>																
Kamta-1	Production Suspended													21,139			
<b>Field Total:</b>														<b>21,139</b>			
<b>Daily Avg.(mmscfd)</b>																	
<b>Field :</b>	<b>Meghna</b>																
M-1	383	354	395	383	395	381							2,292	62,102	4,425	3,838	3,707
<b>Field Total:</b>	<b>383</b>	<b>354</b>	<b>395</b>	<b>383</b>	<b>395</b>	<b>381</b>							<b>2,292</b>	<b>62,102</b>	<b>4,425</b>	<b>3,838</b>	<b>3,707</b>
<b>Daily Avg.(mmscfd)</b>	12	13	13	13	13	13							11		143	124	120
<b>Field :</b>	<b>Moulavi Bazar</b>																
MV Bazar-2	252	239	259	235	255	208							1,447	50,318	3,201	2,889	1,814
MV Bazar-3	399	408	446	361	414	334							2,362	151,754	5,394	6,116	7,319

## Monthly Production by Field and Well upto june 2017

Well	Jan	Feb	Mar	Apr	May	Jun	Jul	Aug	Sep	Oct	Nov	Dec	Total	Cumulative	2016	2015	2014
MV Bazar-4	355	325	361	330	347	288							2,006	53,025	4,141	2,927	2,079
MV Bazar-5	Production Suspended					0								66			
MV Bazar-6	128	151	176	170	166	119							911	13,850	1,737	2,198	2,407
MV Bazar-7	14	29	24	15	15	7							104	5,575	123	1,433	1,487
MV Bazar-9	0	0	0	0	0	0							0	30,334	41	474	9,041
<b>Field Total:</b>	<b>1,149</b>	<b>1,152</b>	<b>1,266</b>	<b>1,111</b>	<b>1,198</b>	<b>956</b>							<b>6,831</b>	<b>304,922</b>	<b>14,638</b>	<b>16,037</b>	<b>24,147</b>
<b>Daily Avg.(mmscfd)</b>	37	41	41	37	39	32							32		472	517	779
<b>Field :</b>	<b>Narshingdi</b>																
N-1	533	479	529	517	534	516							3,109	135,243	6,242	6,239	6,208
N-2	341	310	350	333	347	329							2,010	49,712	4,122	3,914	3,969
<b>Field Total:</b>	<b>875</b>	<b>789</b>	<b>879</b>	<b>850</b>	<b>881</b>	<b>845</b>							<b>5,118</b>	<b>184,955</b>	<b>10,364</b>	<b>10,154</b>	<b>10,177</b>
<b>Daily Avg.(mmscfd)</b>	28	28	28	28	28	28							24		334	328	328
<b>Field :</b>	<b>Rashidpur</b>																
RP-1	560	508	559	537	561	541							3,266	157,198	6,639	6,423	6,633
RP-2	Production Suspended					0								82,474			
RP-3	319	291	322	311	322	313							1,878	125,815	3,877	4,177	4,420
RP-4	314	284	315	297	303	293							1,805	122,957	3,675	3,683	3,687
RP-5	Production Suspended					0								25,647			
RP-6	0	0	0	0	0	0							0	9,983	0	0	0
RP-7	190	171	188	181	192	186							1,108	61,112	2,355	2,236	2,226
RP-8	369	324	354	329	336	324							2,036	13,396	4,422	5,115	1,822
<b>Field Total:</b>	<b>1,751</b>	<b>1,578</b>	<b>1,738</b>	<b>1,655</b>	<b>1,715</b>	<b>1,656</b>							<b>10,093</b>	<b>598,582</b>	<b>20,969</b>	<b>21,634</b>	<b>18,788</b>
<b>Daily Avg.(mmscfd)</b>	56	56	56	55	55	55							48		676	698	606
<b>Field :</b>	<b>Salda Nadi</b>																
Salda-1	0	0	0	0	0								0	36,904	0	0	0
Salda-2	0	0	0	0	0								0	28,495	0	0	0
Salda-3	146	125	137	134	138	132.00							812	23,812	2,350	3,546	4,891
Salda-4	3	0	2	1	0	3							8	42	34		

## Monthly Production by Field and Well upto june 2017

Well	Jan	Feb	Mar	Apr	May	Jun	Jul	Aug	Sep	Oct	Nov	Dec	Total	Cumulative	2016	2015	2014
<b>Field Total:</b>	<b>149</b>	<b>125</b>	<b>139</b>	<b>135</b>	<b>138</b>	<b>135</b>							<b>820</b>	<b>89,252</b>	<b>2,383</b>	<b>3,546</b>	<b>4,891</b>
<b>Daily Avg.(mmscfd)</b>	5	4	4	4	4	4							4		77	114	158
<b>Field :</b>	<b>Sangu</b>																
Sangu-1	0	0	0	0	0	0							0	116,191	0	0	0
Sangu-3z	0	0	0	0	0	0							0	131,796	0	0	0
Sangu-4	Production Suspended													87,280			
Sangu-5	Production Suspended													61,674			
Sangu-7	Production Suspended													18,202			
Sangu-8	Production Suspended													37,619			
Sangu-9	0	0	0	0	0	0							0	30,638	0	0	0
Sangu-10	Production Suspended																
Sangu-11	0	0	0	0	0	0							0	6,067	0	0	0
<b>Field Total:</b>	<b>0</b>	<b>0</b>	<b>0</b>	<b>0</b>	<b>0</b>	<b>0</b>							<b>0</b>	<b>489,467</b>	<b>0</b>	<b>0</b>	<b>0</b>
<b>Daily Avg.(mmscfd)</b>	0	0	0	0	0	0							0		0	0	0
<b>Field :</b>	<b>Semutang</b>																
Semutang-5	70	57	59	45	46	36							313	11,617	946	1,389	1,964
Semutang-6	0	0	0	0	0	0							0	806	0	15	791
<b>Field Total:</b>	<b>70</b>	<b>57</b>	<b>59</b>	<b>45</b>	<b>46</b>	<b>36</b>							<b>313</b>	<b>12,423</b>	<b>946</b>	<b>1,403</b>	<b>2,755</b>
<b>Daily Avg.(mmscfd)</b>	2	2	2	1	1	1							1		31	45	89
<b>Field :</b>	<b>Shahbazpur</b>																
Shahbazpur-1	357	340	375	351	365	399							2,188	18,578	3,623	2,268	1,931
Shahbazpur-2	0	0	0	0	0	277							277	466	189	0	0
Shahbazpur-3	263	213	234	179	111	162							1,162	7,104	3,116	2,826	
Shahbazpur-4	254	352	401	311	296	187							1,801	6,067	1,091	3,175	
<b>Field Total:</b>	<b>874</b>	<b>905</b>	<b>1,011</b>	<b>841</b>	<b>773</b>	<b>1,026</b>							<b>5,428</b>	<b>32,215</b>	<b>8,019</b>	<b>8,269</b>	<b>1,931</b>
<b>Daily Avg.(mmscfd)</b>	28	32	33	28	25	34							26		259	267	62

## Monthly Production by Field and Well upto june 2017



HYDROCARBON UNIT

Energy & Mineral Resources Division

Figures in mmscf

Well	Jan	Feb	Mar	Apr	May	Jun	Jul	Aug	Sep	Oct	Nov	Dec	Total	Cumulative	2016	2015	2014
<b>Field</b>	<b>Srikail</b>																
Srikail-2	490	441	490	460	458	421							2,760	30,165	6,064	6,150	7,414
Srikail-3	460	414	442	419	427	408							2,571	28,185	6,607	7,919	7,611
Srikail-4	295	267	288	290	302	297							1,740	3,775	2,035		
<b>Field Total:</b>	<b>1,245</b>	<b>1,122</b>	<b>1,220</b>	<b>1,169</b>	<b>1,187</b>	<b>1,127</b>							<b>7,070</b>	<b>62,126</b>	<b>14,707</b>	<b>14,070</b>	<b>15,025</b>
<b>Daily Avg.(mmscfd)</b>	40	40	39	39	38	38							33		474	454	485
<b>Field :</b>	<b>Sundalpur</b>																
Sundalpur -1	0	0	0	0	0	0							0	9,809	552	1,425	1,709
Sundalpur -2	0	0	0	0	0	0							0	0	0	0	
<b>Field Total:</b>	<b>0</b>	<b>0</b>	<b>0</b>	<b>0</b>	<b>0</b>	<b>0</b>							<b>0</b>	<b>9,809</b>	<b>552</b>	<b>1,425</b>	<b>1,709</b>
<b>Daily Avg.(mmscfd)</b>	0	0	0	0	0	0							0		18	46	55
<b>Field :</b>	<b>Sylhet</b>																
Sylhet-3	Production Suspended													89,032			
Sylhet-6	Production Suspended													91,748			
Sylhet-7	191	171	186	177	184	183							1,093	24,401	2,212	2,239	2,303
Surma-1	56	50	55	54	34	0							249	6,528	720	791	804
<b>Field Total:</b>	<b>247</b>	<b>221</b>	<b>241</b>	<b>231</b>	<b>218</b>	<b>183</b>							<b>1,342</b>	<b>211,709</b>	<b>2,932</b>	<b>3,031</b>	<b>3,107</b>
<b>Daily Avg.(mmscfd)</b>	8	8	8	8	7	6							6		95	98	100
<b>Field :</b>	<b>Titas</b>																
Titas-1	323	581	645	642	727	678							3,596	426,812	9,999	10,555	11,345
Titas-2	1,009	890	965	921	927	892							5,604	418,081	11,474	13,015	12,764
Titas-3	Production Suspended													314,888			
Titas-4	1,022	934	1,029	999	1,020	960							5,963	352,891	12,782	12,882	12,982
Titas-5	1,022	933	1,028	985	992	948							5,907	410,452	10,692	13,118	14,066
Titas-6	1,043	948	1,039	1013	1,018	967							6,028	345,097	12,809	12,958	13,265
Titas-7	949	888	1,011	968	1,006	972							5,794	327,033	12,125	12,259	12,866
Titas-8	602	559	622	599	614	589							3,586	263,178	7,046	7,162	7,491
Titas-9	715	653	717	687	705	670							4,147	265,684	8,467	8,355	8,129
Titas-10	621	562	624	602	616	601							3,626	187,584	4,350	2,425	1,892

## Monthly Production by Field and Well upto june 2017



Figures in mmscf

Well	Jan	Feb	Mar	Apr	May	Jun	Jul	Aug	Sep	Oct	Nov	Dec	Total	Cumulative	2016	2015	2014
Titas-11	880	799	889	846	851	821							5,087	231,713	9,075	10,129	10,873
Titas-12	439	403	447	429	451	427							2,596	93,043	5,326	5,218	5,081
Titas-13	723	643	711	666	696	661							4,100	179,361	9,553	10,106	10,154
Titas-14	720	650	719	685	708	672							4,155	138,629	8,888	9,582	9,042
Titas-15	950	846	930	898	930	894							5,448	131,445	11,777	12,315	12,333
Titas-16	891	816	905	885	889	816							5,202	132,882	11,333	11,966	12,452
Titas-17	620	559	612	596	613	585							3,586	29,742	7,359	7,080	7,210
Titas-18	619	557	612	595	613	584							3,580	27,753	7,338	7,075	7,280
Titas-19	533	484	521	484	506	500							3,028	18,856	6,253	6,309	3,266
Titas-20	308	280	308	300	306	291							1,792	13,071	3,645	3,604	3,445
Titas-21	233	214	242	226	232	222							1,369	4,805	1,572	0	1,843
Titas-22	387	345	376	365	379	350							2,202	18,126	5,497	6,468	3,960
Titas-27	527	476	527	502	528	508							3,069	19,944	6,233	6,193	4,450
Titas-23	0	0	153	453	463	448							1,517	1,517			
Titas-24	0	0	86	270	238	251							845	845			
Titas-25	459	408	447	443	460	449							2,666	2,935	269		
Titas-26	771	690	765	690	775	760							4,449	4,833	383		
<b>Field Total:</b>	<b>16,366</b>	<b>15,118</b>	<b>16,930</b>	<b>16,751</b>	<b>17,259</b>	<b>16,517</b>							<b>98,940</b>	<b>4,361,199</b>	<b>184,246</b>	<b>188,773</b>	<b>162,082</b>
<b>Daily Avg.(mmscfd)</b>	528	540	546	558	557	551							467		5,943	6,089	5,228
<b>Field : Begumganj</b>																	
<b>Begumganj-3</b>	0	0	0	0	0	0							0	877	85	791	
<b>Field Total:</b>	<b>0</b>	<b>0</b>	<b>0</b>	<b>0</b>	<b>0</b>	<b>0</b>							<b>0</b>	<b>877</b>	<b>85</b>	<b>791</b>	
<b>Daily Avg.(mmscfd)</b>	0	0	0	0	0	0							0		3	26	
<b>Field : Rupganj</b>																	
<b>Rupganj-1</b>	0	0	22	159	155	95							430	430			
<b>Field Total:</b>	<b>0</b>	<b>0</b>	<b>22</b>	<b>159</b>	<b>155</b>	<b>95</b>							<b>430</b>	<b>430</b>			
<b>Daily Avg.(mmscfd)</b>	0	0	1	5	5	3							2				
<b>Grand Total (in Bcf)</b>	83.88	76.67	84.62	81.95	83.84	77.06							488.0	15,002.6	973.1	945.3	816.2
<b>Daily Avg.(mmscfd)</b>	2,706	2,738	2,730	2,732	2,704	2,569							2,696		2,666	2,590	2,236

## Monthly Condensate Production by Fields upto june 2017



Figures in bbl

Field Name	Jan-17	Feb-17	Mar-17	Apr-17	May-17	Jun-17	Jul-17	Aug-17	Sep-17	Oct-17	Nov-17	Dec-17	Total	Cumulative 000' bbl	2016	2015	2014	
Bakhrabad	660	562	620	587	519	404							3,352	1,012	7,091	6,632	6,019	
Daily Avg.	21	20	20	20	17	13							19		229	214	194	
Bangura	8,845	8,306	8,853	8,591	8,935	8,533							52,063	920	103,416	108,140	112,273	
Daily Avg.	285	297	286	286	288	284							288		3,336	3,488	3,622	
Beani Bazar	6,698	6,478	7,237	6,566	6,358	5,814							39,151	1,487	56,146	55,563	56,917	
Daily Avg.	216	231	233	219	205	194							216		1,811	1,792	1,836	
Bibiyana	293,319	262,434	258,715	258,411	280,320	246,778							1,599,977	16,203	3,291,906	2,277,248	1,272,806	
Daily Avg.	9,462	9,373	8,346	8,614	9,043	8,226							8,840		106,191	73,460	41,058	
Chattak	Production Suspended														4			
Daily Avg.																		
Fenchuganj	319	263	236	245	257	193							1,512	113	6,138	8,895	9,429	
Daily Avg.	10	9	8	8	8	6							8		198	287	304	
Feni	Production Suspended													0	110	0	0	0
Daily Avg.														0		0	0	0
Habiganj	303	287	327	338	319	311							1,885	122	4,143	4,075	3,997	
Daily Avg.	10	10	11	11	10	10							10		134	131	129	
Jalalabad	42,661	37,189	41,110	38,279	38,143	35,057							232,439	9,567	528,191	577,549	616,725	
Daily Avg.	1,376	1,328	1,326	1,276	1,230	1,169							1,284		17,038	18,631	19,894	
Kailas Tila	18,528	15,227	14,702	16,277	17,224	17,410							99,368	7,500	223,169	250,829	270,121	
Daily Avg.	598	544	474	543	556	580							549		7,199	8,091	8,714	
Kamta	Production Suspended														4			
Daily Avg.																		
Meghna	636	594	642	645	672	628							3,818	96	7,735	6,952	6,606	
Daily Avg.	21	21	21	22	22	21							21		250	224	213	
Moulavi Bazar	94	96	128	107	105	67							596	116	1,585	1,606	2,672	
Daily Avg.	3	3	4	4	3	2							3		51	52	86	

## Monthly Condensate Production by Fields upto june 2017

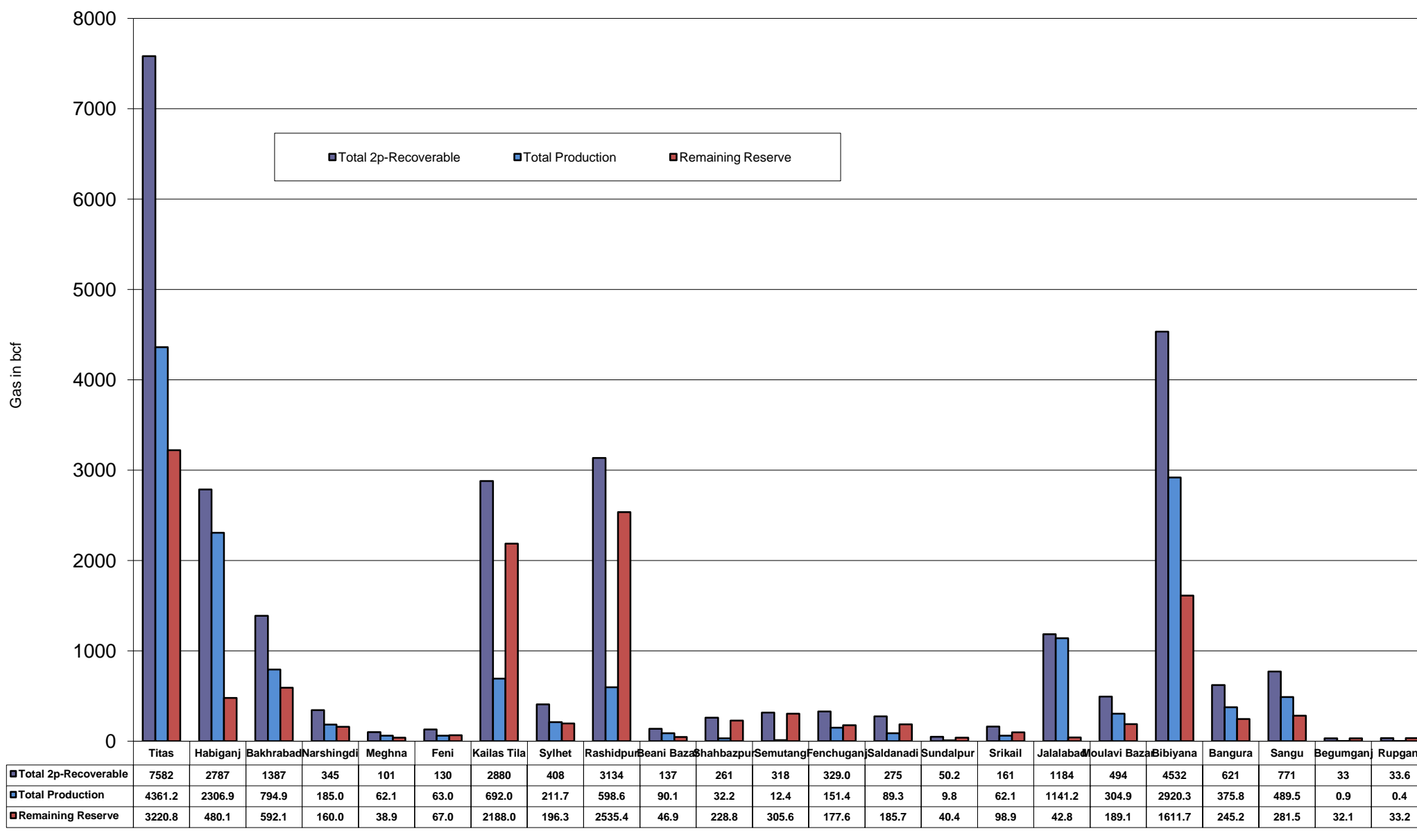


Figures in bbl

Field Name	Jan-17	Feb-17	Mar-17	Apr-17	May-17	Jun-17	Jul-17	Aug-17	Sep-17	Oct-17	Nov-17	Dec-17	Total	Cumulative 000' bbl	2016	2015	2014
Narshingdi	1,497	1,347	1,461	1,373	1,390	1,354							8,422	394	17,534	17,840	19,547
Daily Avg.	48	48	47	46	45	45							47		566	575	631
Rashidpur	925	782	876	798	812	893							5,086	756	14,938	17,853	19,629
Daily Avg.	30	28	28	27	26	30							28		482	576	633
Saldanadi	27	24	21	18	18	19							127	58	386	550	919
Daily Avg.	1	1	1	1	1	1							1		12	18	30
Sangu	0	0	0	0	0	0							0	37	0	0	0
Daily Avg.	0	0	0	0	0	0							0		0	0	0
Semutang	15	17	13	10	10	9							74	5	272	531	597
Daily Avg.	0	1	0	0	0	0							0		9	17	19
Shahbazpur	97	91	114	102	87	136							628	3	839	816	118
Daily Avg.	3	3	4	3	3	5							3		27	26	4
Srikail	3,529	3,174	3,408	3,098	3,241	3,063							19,513	76	21,075	10,527	13,981
Daily Avg.	114	113	110	103	105	102							108		680	340	451
Sundalpur	0	0	0	0	0	0							0	0	0	39	33
Daily Avg.	0	0	0	0	0	0							0		0	1	1
Sylhet	1,717	1,568	1,656	1,563	1,475	1,337							9,317	779	20,532	22,261	23,292
Daily Avg.	55	56	53	52	48	45							51		662	718	751
Titas	12,673	11,938	13,367	13,154	13,089	12,397							76,618	4,986	133,133	134,637	147,395
Daily Avg.	409	426	431	438	422	413							423		4,295	4,343	4,755
Begumganj	0	0	0	0	0	0							0	0	0	143	
Daily Avg.	0	0	0	0	0	0							0		0	5	
Rupganj	0	0	21	321	344	167							853	1			
Daily Avg.	0	0	1	11	11	6							5				
<b>Total (000'bbl)</b>	<b>393</b>	<b>350</b>	<b>354</b>	<b>350</b>	<b>373</b>	<b>335</b>							<b>2,155</b>	<b>44,348</b>	<b>4,438</b>	<b>3,499</b>	<b>2,581</b>
<b>Daily Avg. (000'bbl)</b>	<b>12.7</b>	<b>12.5</b>	<b>11.4</b>	<b>11.7</b>	<b>12.0</b>	<b>11</b>							<b>12</b>		<b>12.2</b>	<b>9.6</b>	<b>7.1</b>

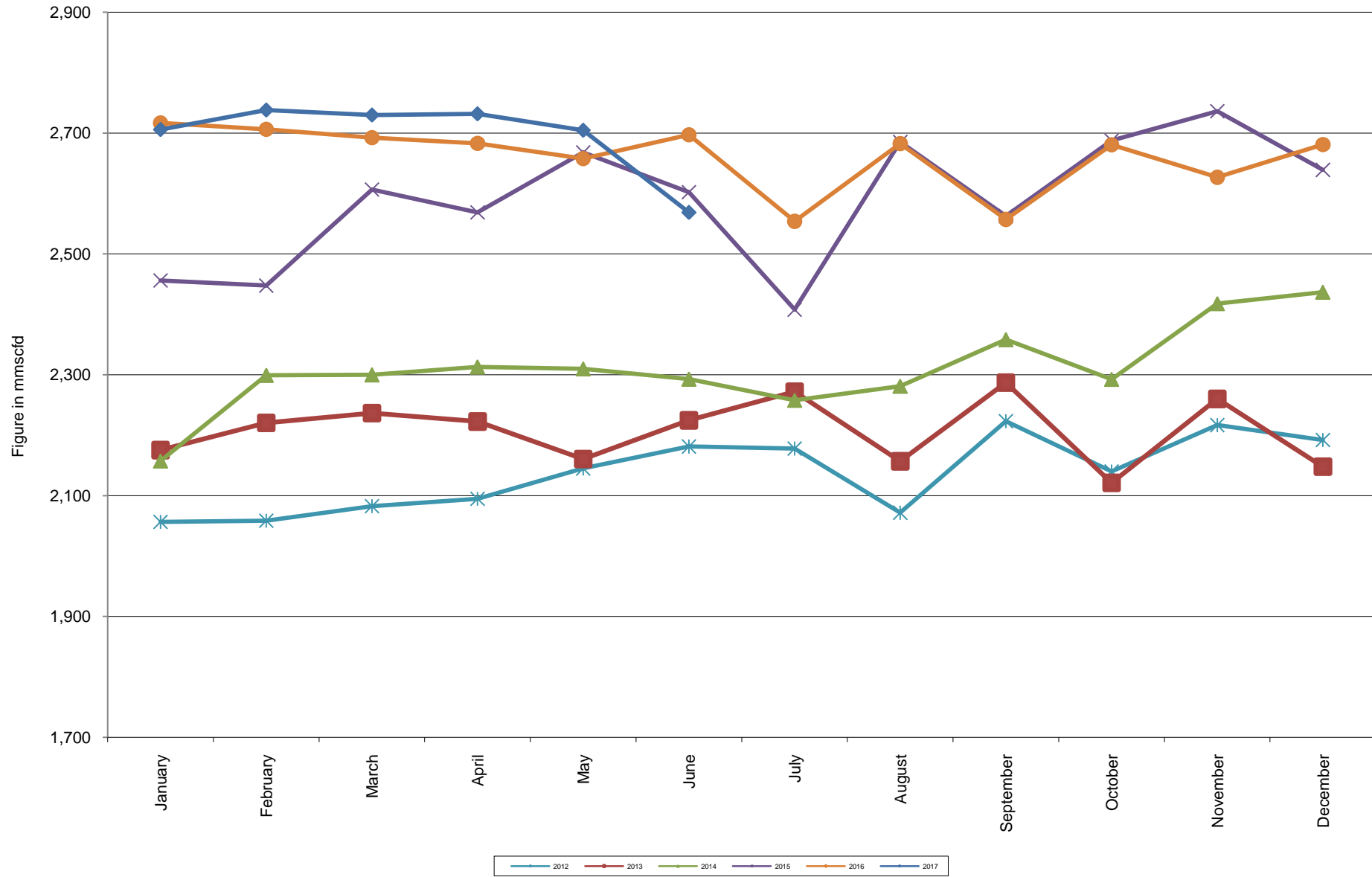
Note: Historical condensate figure of Sangu available from 2006. Sylhet available from August 1964

## Reserve, Production and Remaining Reserve as of June 2017





## Daily Avg. Production From January 2012 to June 2017



## Field Wise Daily Avg. Production June 2017

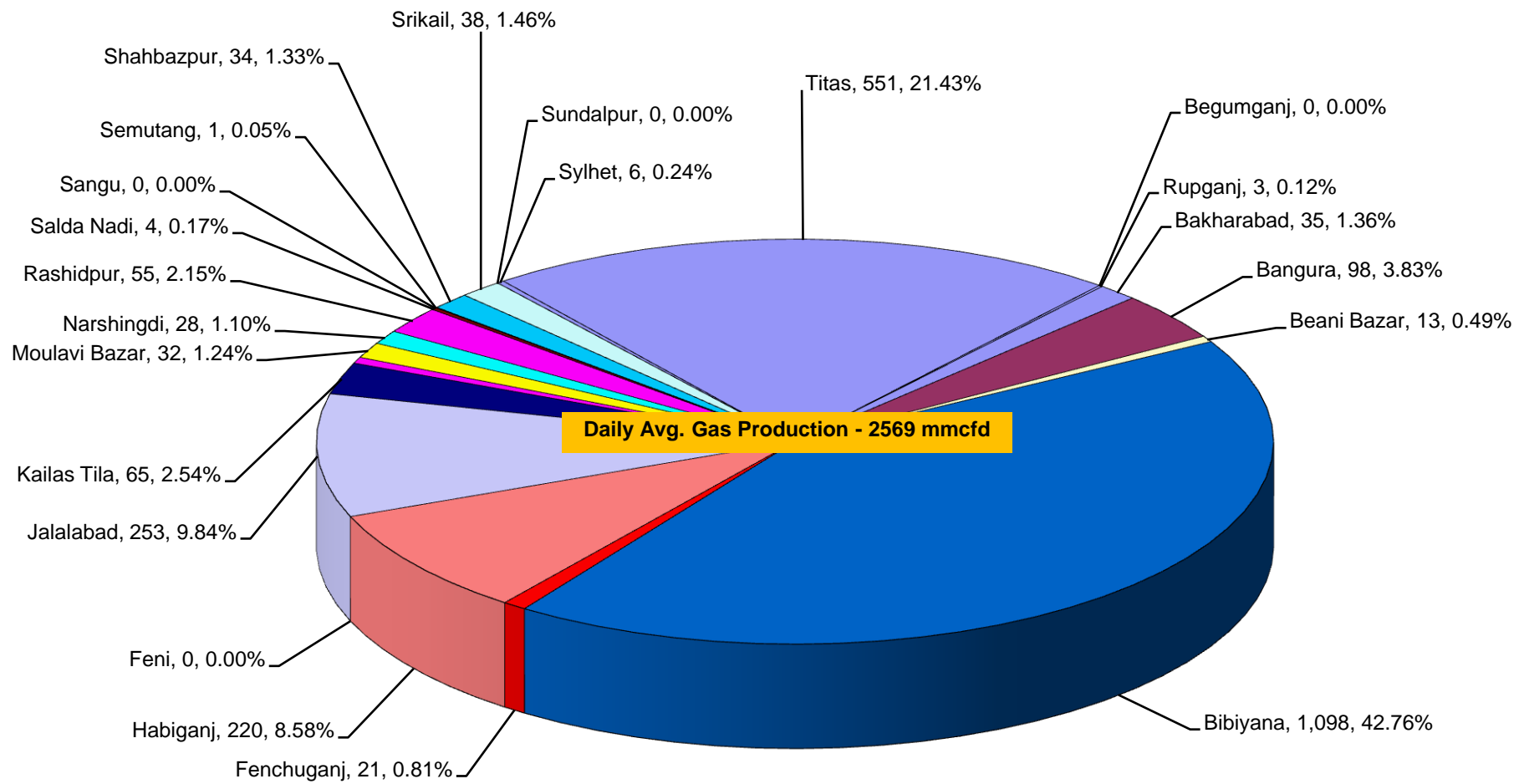
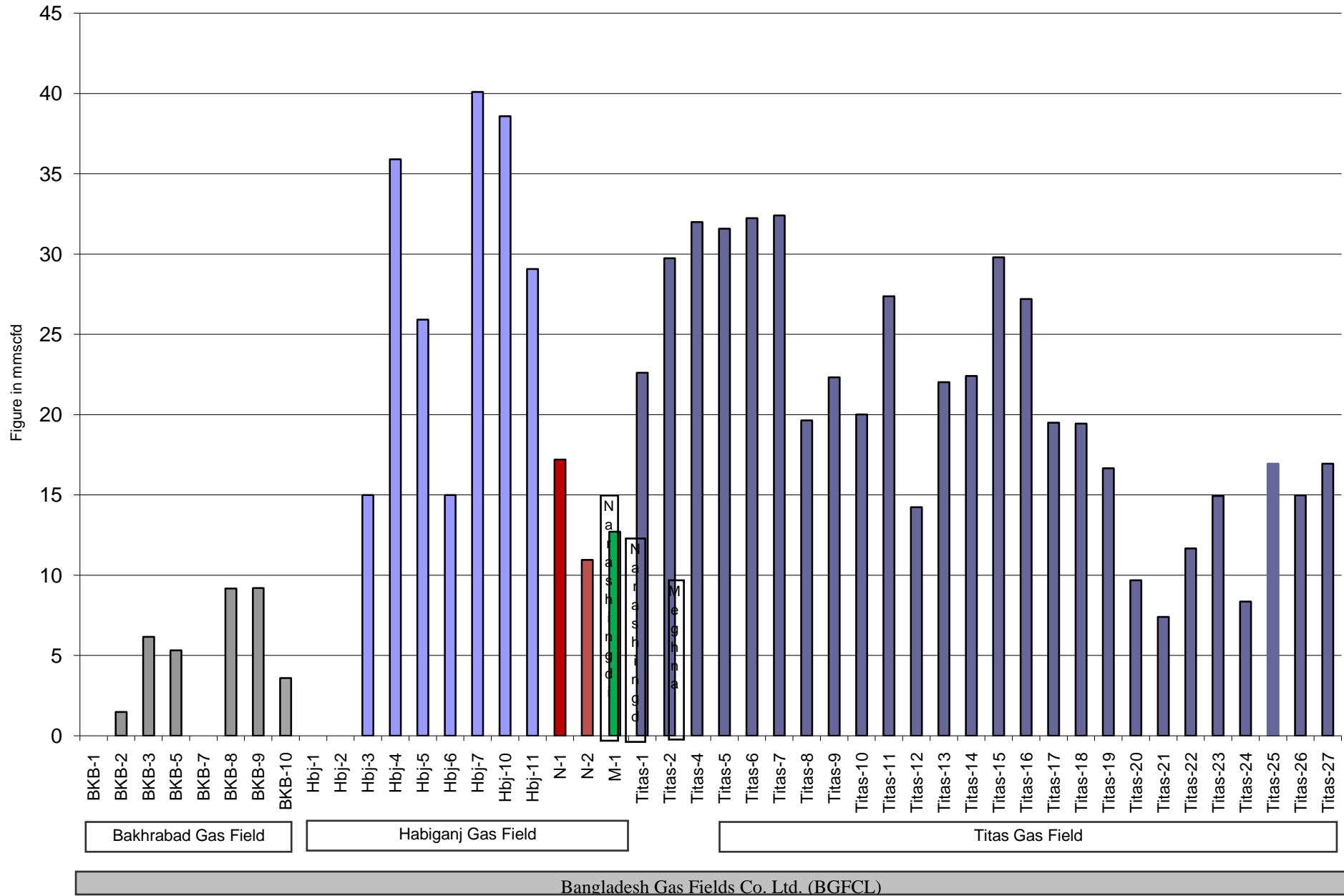
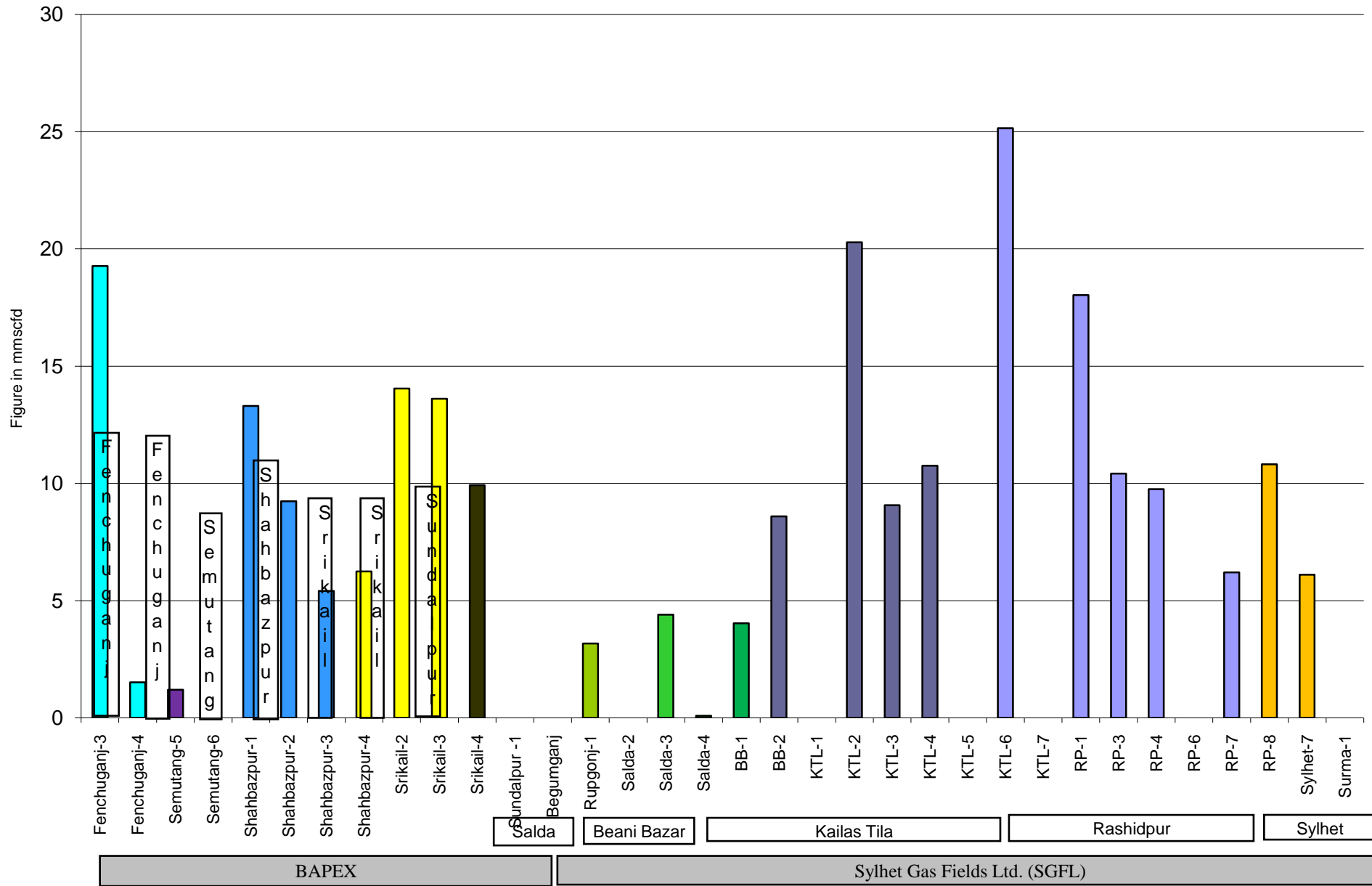


Figure in mmcf  
and % of total production

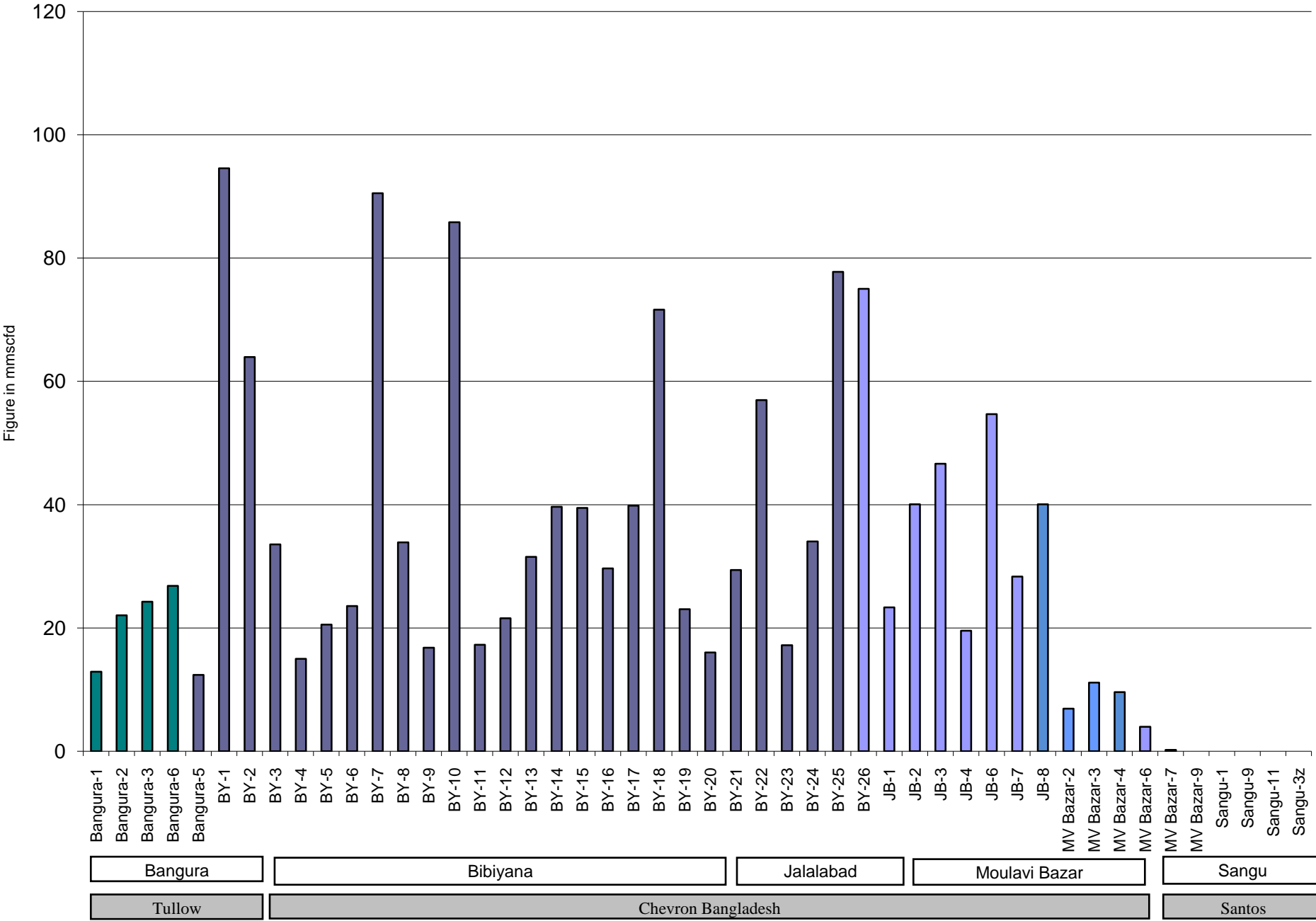
## Wellwise Daily Avg. Production- BGFCL June 2017



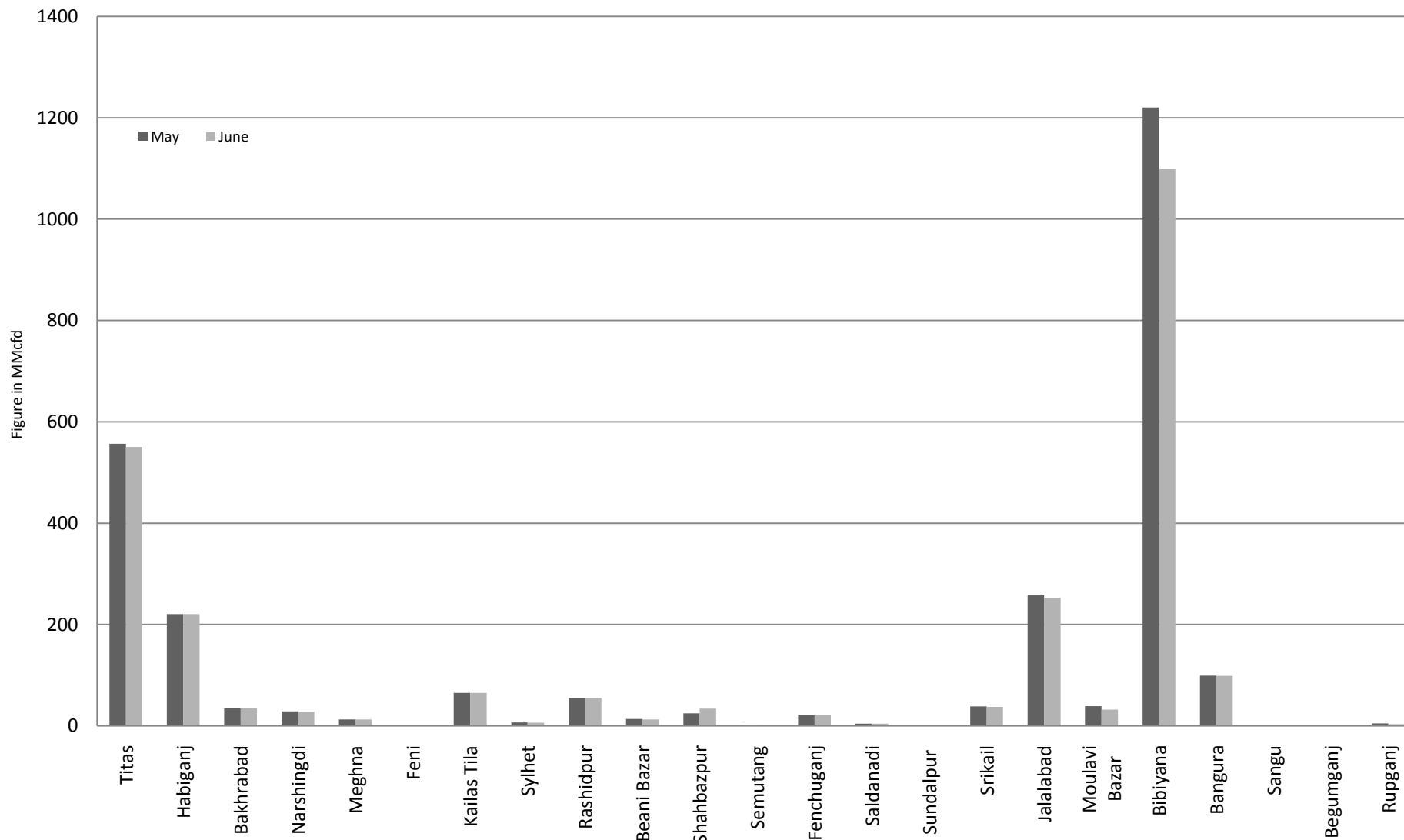
## Wellwise Daily Avg. Production- Bapex and SGFL June 2017



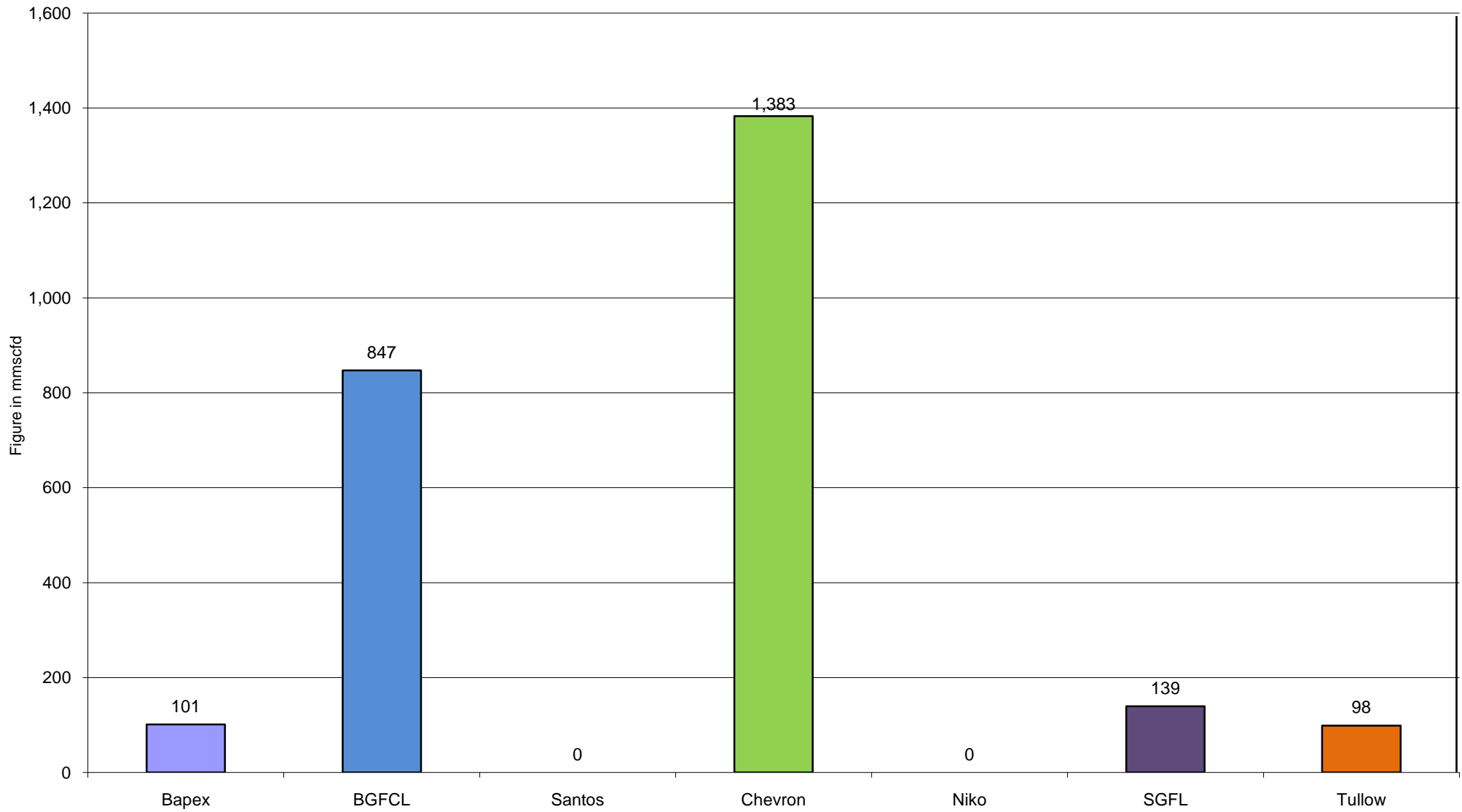
## Wellwise Daily Avg. Production- IOC and JVA June 2017



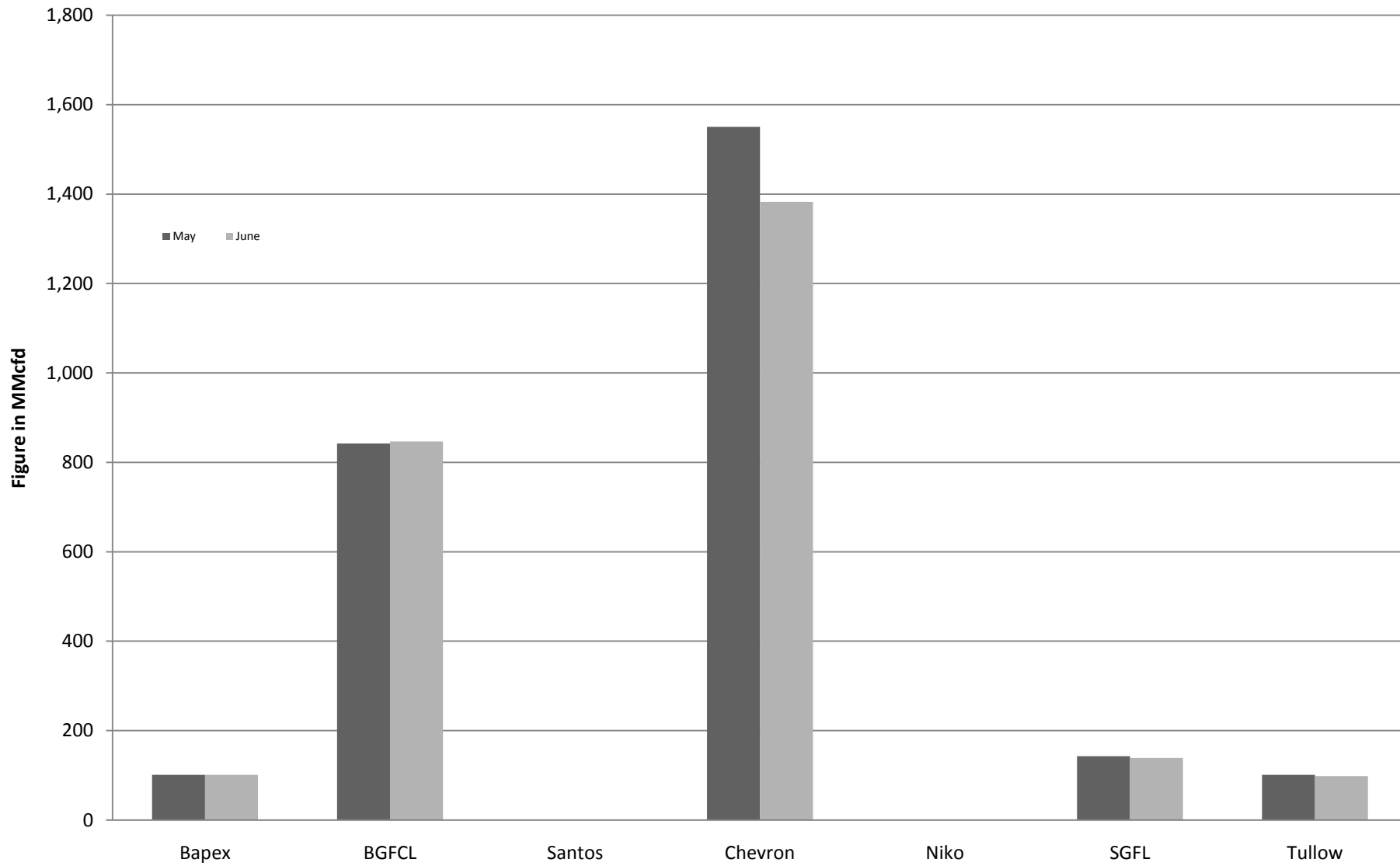
### Comparison of fieldwise daily avg. Gas production between May 2017 & June 2017



## Daily Avg. Production by Operators June 2017

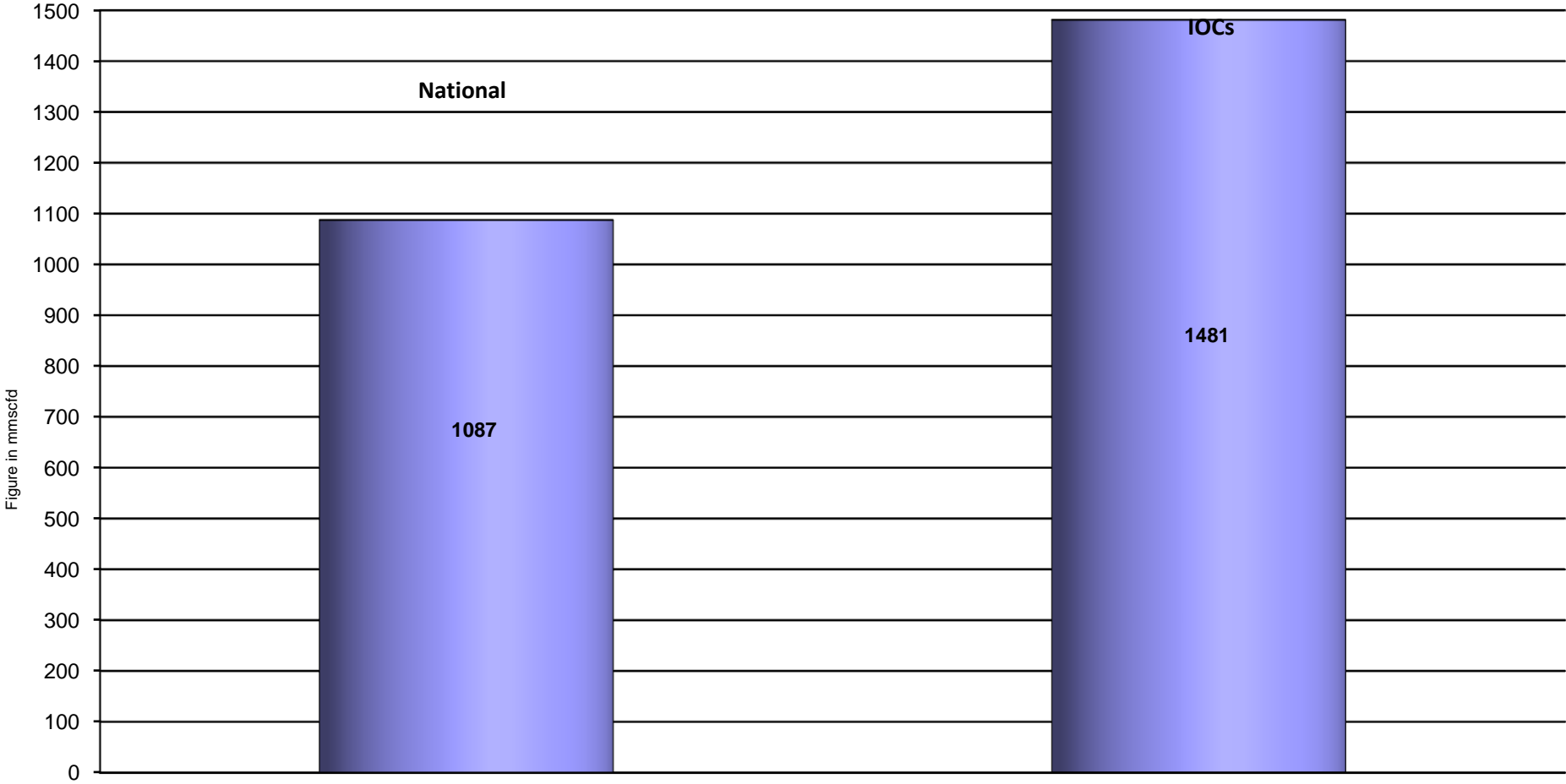


### Comparison of operatorwise daily avg. Gas production between May 2017 & June 2017

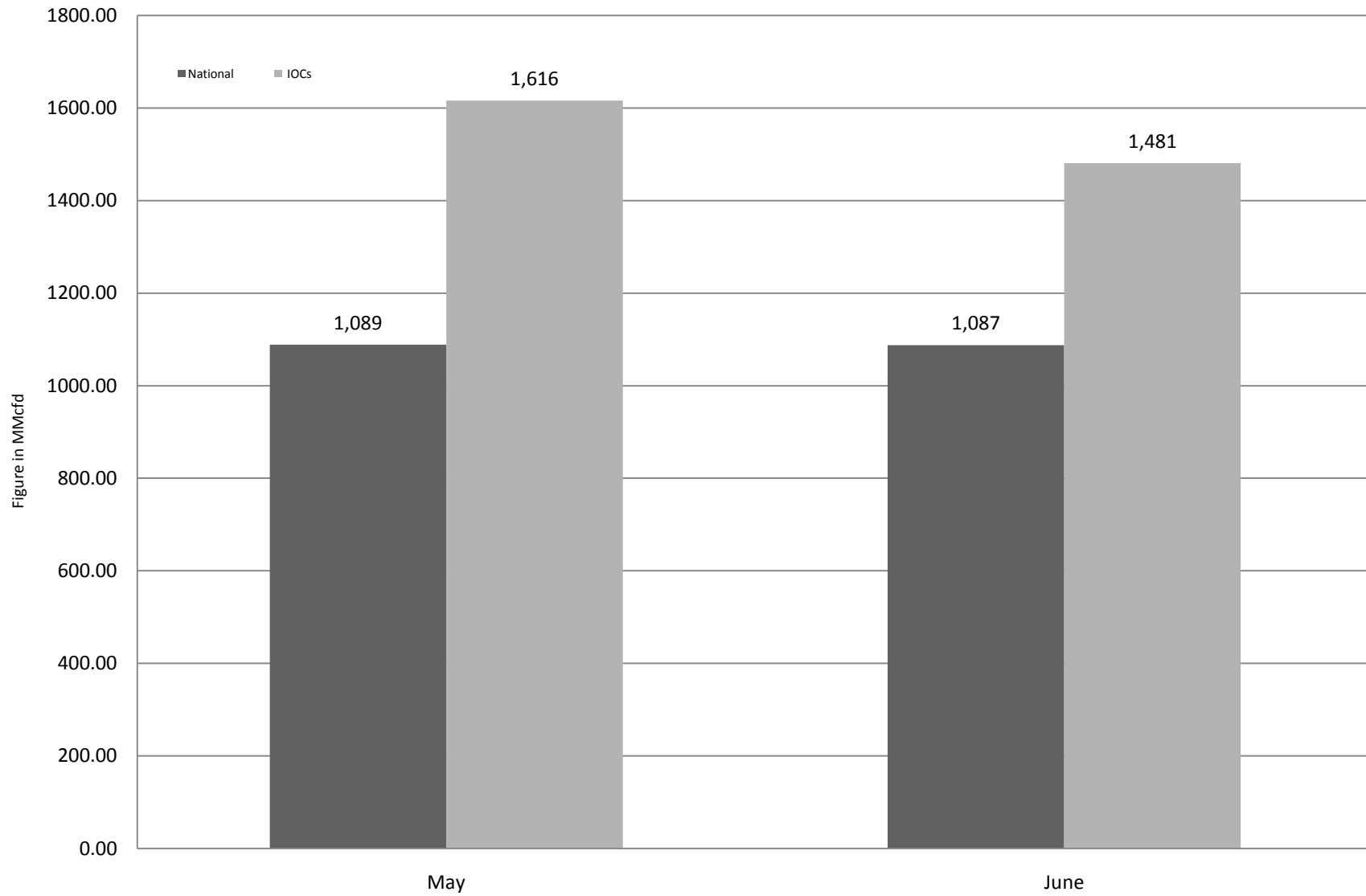




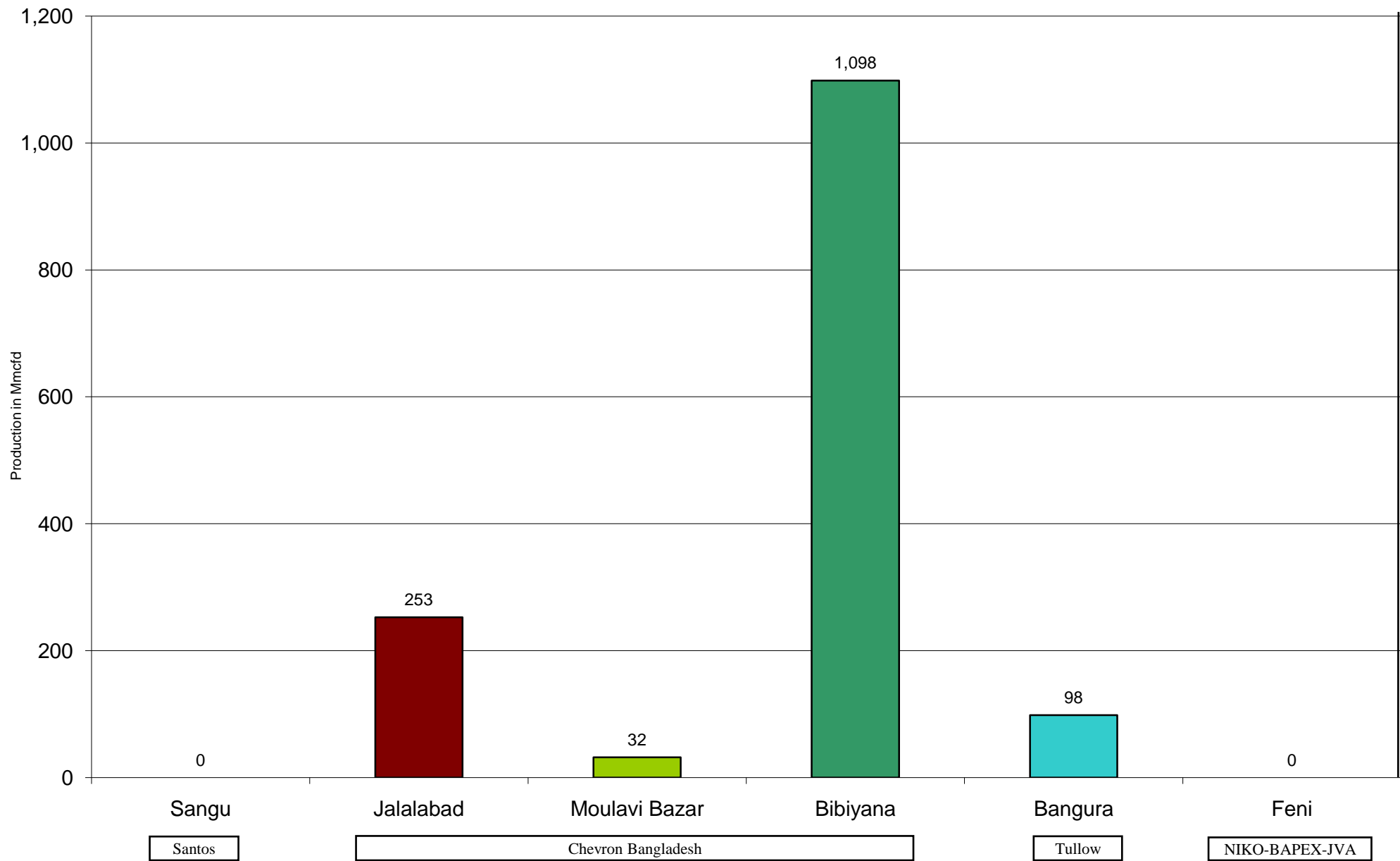
# Daily Avg. Production - National Vs. IOCs June 2017



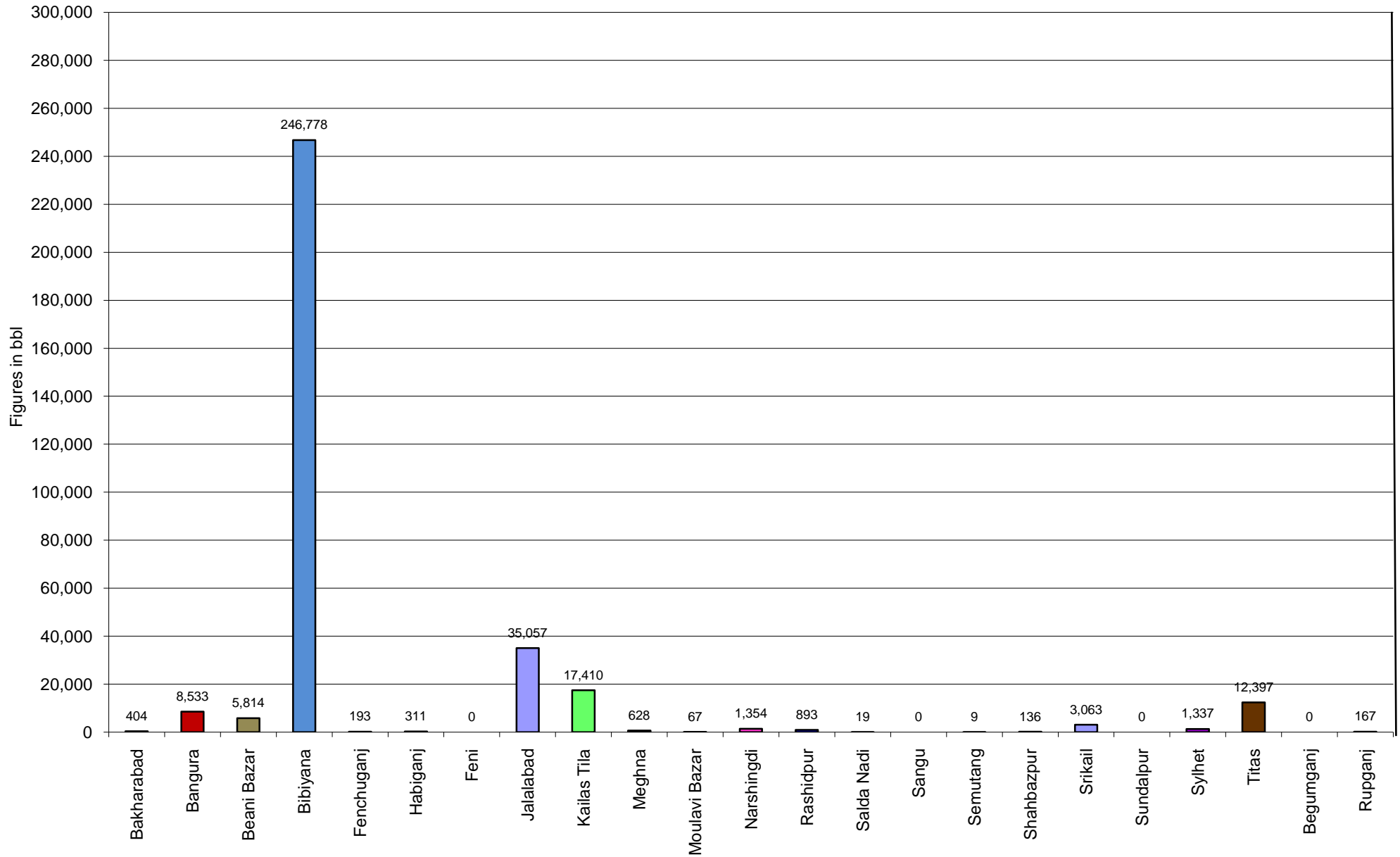
### Comparison of daily avg. Gas production - National vs IOC's between May 2017 & June 2017



## Daily Avg. Production - IOC and JVA June 2017



## Monthly Condensate Production June 2017



## Field wise Coal Reserve in Bangladesh

SI No.	Coal Basins	Proved (Mt)	Indicated (Mt)	Inferred (Mt)	Total (Mt)
1	Barapukuria	114.32	211.33	21.06+(43-64)*	346.71+(43-64)*
2	Phulbari	288	226	58	572
3	Khalashpir	-	297.57	225.92	523.49
4	Jamalganj	-	-	1053.9	1053.9
5	Dighipara	-	105	495	600
	<b>Total</b>	<b>402.32</b>	<b>839.9</b>	<b>1896.88-1917.88</b>	<b>3139.10-3160.10</b>

*\*Resources of VI Seam in second syncline are towards SW of main basin, after Wardell Armstrong*

*NOTE: Reserve Figure based on Coal Sector Development Strategy (Final), HCU, PwC*

## Summary of Reserve and Production of Barapukuria Coal Mine

### As of 30 June 2017

<b>Coal Initially Place (Proven + Probable)</b>	<b>346.71 Mt</b>	<b>0.347 Bt</b>
<b>Total Reserve of Seam VI</b>	<b>285.41 Mt</b>	<b>0.285 Bt</b>
<b>Recoverable from Seam VI Central part(Proven + Probable)</b>	<b>16.50 Mt*</b>	<b>0.017 Bt</b>
<b>Coal Production in June 2017</b>	<b>0.13 Mt</b>	<b>0.000 Bt</b>
<b>Cumulative Production as of June 2017</b>	<b>9.17 Mt</b>	<b>0.009 Bt</b>
<b>Remaining Reserve</b>	<b>7.33 Mt</b>	<b>0.007 Bt</b>

*NOTE: Reserve figure based on Mines and Minerals Development Report ,HCU PwC*

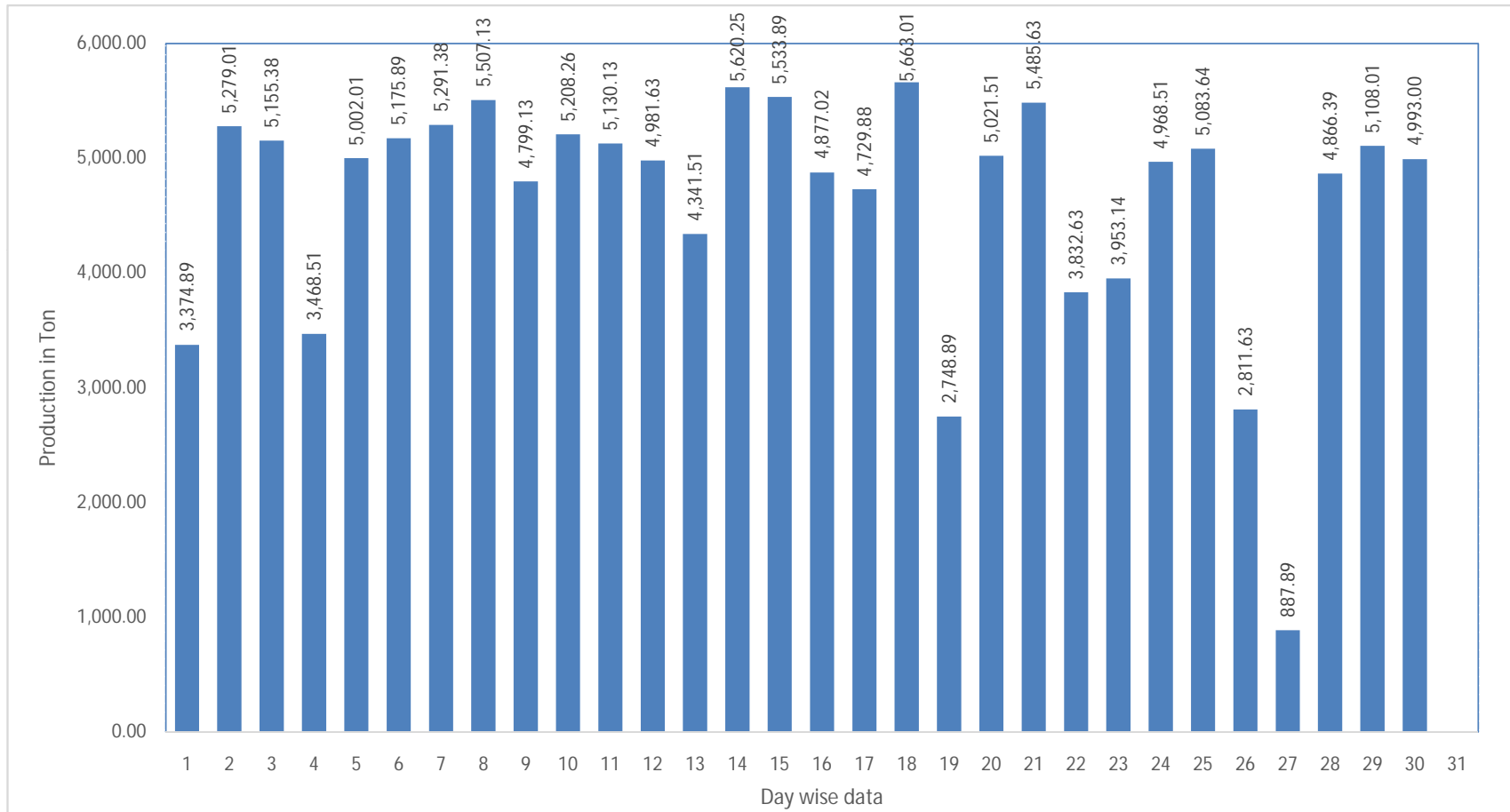
\*Figure from BCMCL, M/S Wardell Armstrong. According to Mines and Minerals Development Report ,HCU, PwC this figure is 64.8 Mt

**Barapukuria Coal Mine-MPM and P Contract (BCMCL)**  
**Measurement Record: Surface Belt Weigher**  
**Measurement Period: June 2017**

Day wise data	Consortium Daily Output (ton)	Consortium Cumulative Total	BCMCL Daily Output	BCMCL Cumulative Total	Remarks
1-Jun-2017	3,374.89	3,374.89	3,374.89	3,374.89	
2-Jun-2017	5,279.01	8,653.90	5,279.01	8,653.90	
3-Jun-2017	5,155.38	13,809.28	5,155.38	13,809.28	
4-Jun-2017	3,468.51	17,277.79	3,468.51	17,277.79	
5-Jun-2017	5,002.01	22,279.80	5,002.01	22,279.80	
6-Jun-2017	5,175.89	27,455.69	5,175.89	27,455.69	
7-Jun-2017	5,291.38	32,747.07	5,291.38	32,747.07	
8-Jun-2017	5,507.13	38,254.20	5,507.13	38,254.20	
9-Jun-2017	4,799.13	43,053.33	4,799.13	43,053.33	
10-Jun-2017	5,208.26	48,261.59	5,208.26	48,261.59	
11-Jun-2017	5,130.13	53,391.72	5,130.13	53,391.72	
12-Jun-2017	4,981.63	58,373.35	4,981.63	58,373.35	
13-Jun-2017	4,341.51	62,714.86	4,341.51	62,714.86	
14-Jun-2017	5,620.25	68,335.11	5,620.25	68,335.11	
15-Jun-2017	5,533.89	73,869.00	5,533.89	73,869.00	
16-Jun-2017	4,877.02	78,746.02	4,877.02	78,746.02	
17-Jun-2017	4,729.88	83,475.90	4,729.88	83,475.90	
18-Jun-2017	5,663.01	89,138.91	5,663.01	89,138.91	
19-Jun-2017	2,748.89	91,887.80	2,748.89	91,887.80	
20-Jun-2017	5,021.51	96,909.31	5,021.51	96,909.31	
21-Jun-2017	5,485.63	102,394.94	5,485.63	102,394.94	
22-Jun-2017	3,832.63	106,227.57	3,832.63	106,227.57	
23-Jun-2017	3,953.14	110,180.71	3,953.14	110,180.71	
24-Jun-2017	4,968.51	115,149.22	4,968.51	115,149.22	
25-Jun-2017	5,083.64	120,232.86	5,083.64	120,232.86	
26-Jun-2017	2,811.63	123,044.49	2,811.63	123,044.49	
27-Jun-2017	887.89	123,932.38	887.89	123,932.38	
28-Jun-2017	4,866.39	128,798.77	4,866.39	128,798.77	
29-Jun-2017	5,108.01	133,906.78	5,108.01	133,906.78	
30-Jun-2017	4,993.00	138,899.78	4,993.00	138,899.78	

less Difference in Water Content:	7512.05
Less Out of Seam dilution:	0
Output (tons) measured by Belt	131,387.73
Tonnes mined in DARR	
Net Output after removing DARR tonnes:	131,387.73
Coal from Sedimentary Tank	13001.41
<b>Total</b>	<b>144,389.14</b>

## Barapukuria Coal Mine Daywise Data Graph for June 2017





# Hydrocarbon Unit

**Energy & Mineral Resources Division**  
**Ministry of Power, Energy & Mineral Resources**  
**BTMC Bhaban (1<sup>st</sup> Floor)**  
**7-9, Kawran Bazar, Dhaka-1215**  
**w w w . h c u . o r g . b d**