



Gas Production & Depletion And Coal Production

November 2018



Gas Reserve & Production at a glance

Gas Initially in Place (GIIP)	:	35,796.19 Bcf
Recoverable (2P)	:	28,685.40 Bcf
Cumulative Production as of November 2018	:	16,378.43 Bcf
Remaining Reserve up to November 2018	:	12,306.97 Bcf
Gas Production in November 2018	:	81.41 Bcf
National Oil Company (NOC's) production in November 2018	:	32.45 Bcf
International Oil Company (IOC's) production in November 2018	:	48.96 Bcf
No. of National Oil Company (NOC's) in November 2018	:	3 (BGFCL, BAPEX, SGFL)
No. of International Oil Company (IOC's) in November 2018	:	2 (Chevron, Tullow)
Total gas fields of National Oil Company(NOC) in November 2018	:	21
Total gas fields of International Oil Company(IOC) in November 2018	:	5
Total gas wells of National Oil Company(NOC) in November 2018	:	116
Total gas wells of International Oil Company(IOC) in November 2018	:	60
No. of National Oil Company (NOC's) gas production well in November 2018	:	66
No. of International Oil Company (IOC's) gas production well in November 2018	:	44
No. of National Oil company(NOC's) suspended well in November 2018	:	50
No. of International Oil company(IOC's) suspended well in November 2018	:	16

Executive Summary of November 2018

Total gas and condensate Production in November 2018 were 81.41 Bcf and 347,837 Bbl. In the previous month i.e. October 2018, gas and condensate production was 84.16 Bcf and 355,627 Bbl and in the same month of the previous year i.e. November 2017, total gas and condensate production was 80.56 Bcf and 365,809 Bbl respectively. The National Oil Companies (NOC's) and International Oil Companies (IOC's) Produced 32.45 Bcf and 48.96 Bcf gas respectively in November 2018. During the previous month i.e. October 2018 gas production by the National Oil Companies (NOC's) and International Oil Companies (IOC's) were 32.17 Bcf and 50.12 Bcf respectively. In the month of November 2018 Bibiyana gas field Produced 38.84 Bcf gas and it ranked top among the gas producers. It is noted that Bibiyana gas field Produced 40.33 Bcf in October 2018. Average production from the field during the month of November 2018 was 1295 Mmcfd.

During the month of November 2018 total production of condensate was 347,837 Bbl compared to 355,627 Bbl in the previous month i.e. October 2018. Bibiyana gas field Produced 269,303 Bbl condensate and ranked top while Jalalabad ranked 2nd by producing 28,751 Bbl.

The month of November 2018 total coal production was 75,498.51 Ton. In the previous month i.e. October 2018 total coal production was 91,262.70 Ton. It indicates that 15,764.19 Ton less Coal was produced compared to previous month.

Table of Contents

Gas Report	Page No.
Summary	1
summary of Reserve and Production	2
Production comparison between October 2018 & November 2018	3
Probable Year wise Remaining GAS	4
Probable Year wise Remaining GAS	5
Production per well & production reserve ratio	6
Monthly Production by Fields & Wells up to November 2018	7-14
Monthly Condensate Production by Fields up to November 2018	15-16
Monthly Water Production by Fields from November 2018	17-18
Conditions of Field and Well up to November 2018	19-23
Chart	
Well-wise Production of All fields in 2017-18	24
Reserve, Production and Remaining Reserve as of November 2018	25
Daily Average Gas Production from January 2012 to November 2018	26
Field wise Daily Average Production as of November 2018	27
Well wise Daily Average Production-BGFCL as of November 2018	28
Well wise Daily Average Production-BAPEX and SGFL, November 2018	29
Well wise Daily Average Production-IOC and JVA, November 2018	30
Comparison of Field wise Daily Average Gas Production between Octo 18 & Nov 18	31
Daily Average Production by Operator, November 2018	32
Comparison of Operator wise daily average Production between October 18 & November 18	33
Daily Average Production – National vs IOC’s, November 2018	34
Comparison of daily avg Gas Production- National vs IOC’s between October 18 & November 18	35
Daily Average Production IOC’s and JVA, November 2018	36
Monthly Condensate Production, November 2018	37
Coal Report	
Summary	38-39
Barapukuria Coal Mine-MPM and P Contract (BCMCL)	40
Barapukuria Coal Mine Day wise Data Graph for November 2018	41

Summary of Reserve and Production As of 30 November 2018

Gas Initially Place (Proven + Probable)	35,796.19 Bcf	35.80 Tcf
Recoverable (Proven + Probable)	28,685.40 Bcf	28.69 Tcf
Gas Production in November 2018	81.41 Bcf	0.08 Tcf
Cumulative Production as of November 2018	16378.43 Bcf	16.38 Tcf
Remaining Reserve	12,306.97 Bcf	12.31 Tcf

NOTE: Reserve figure based on "Updated Report on Bangladesh Gas Reserve Estimation 2010", prepared by Gustavson Associates LLC, USA

Summary of Reserve and Production

(As of November 2018)



SI No.	Field	2P	GIIP	2P Reserve	Gas Prod. In November '18	Cum. Gas Production	Remaining Reserve	Cum. Condensate Production
1	Begumganj		47.0	33.0	0.2	1.3	31.7	Gas Bcf 0
2	Shahbazpur		415.0	261.0	1.5	56.2	204.8	6
3	Semutang		654.0	318.0	0.0	13.0	305.0	5
4	Fenchuganj		483.0	329.0	0.3	157.7	171.3	115
5	Salda Nadi		393.0	275.0	0.1	91.0	184.0	58
6	Srikail*		230.0	161.0	0.9	80.1	80.9	125
7	Sundalpur *		62.2	50.2	0.2	11.8	38.4	0
8	Rupganj		48.0	33.6	0.0	0.7	32.9	1
Bapex			2,332.2	1,460.8	3.3	411.8	1,049.0	311
9	Meghna		122.0	101.0	0.4	68.6	32.4	107
10	Narshingdi		405.0	345.0	0.8	199.1	145.9	417
11	Kamta		72.0	50.0	0.0	21.1	28.9	4
12	Habiganj		3,981.0	2,787.0	6.9	2,421.8	365.2	129
13	Bakhrabad		1,825.0	1,387.0	0.8	811.3	575.7	1,019
14	Titas		9,039.0	7,582.0	15.5	4,636.1	2,945.9	5,210
BGFCL			15,444.0	12,252.0	24.4	8,158.1	4,093.9	6,886
15	Sangu		976.0	771.0	0.0	489.5	281.5	37
Santos/Cairn			976.0	771.0	0.0	489.5	281.5	37
16	Bibiyana		5,321.0	4,532.0	38.8	3,556.5	975.5	20,890
17	Moulavi Bazar		630.0	494.0	0.7	321.6	172.4	117
18	Jalalabad**		1,346.0	1,346.0	7.3	1,270.2	75.8	10,109
Chevron			7,297.0	6,372.0	46.9	5,148.3	1,223.7	31,116
19	Feni		185.0	130.0	0.0	63.0	67.0	110
Niko			185.0	129.6		63.0	66.6	110
20	Kailas Tila		3,463.0	2,880.0	2.0	724.6	2,155.4	7,779
21	Sylhet		580.0	408.0	0.1	214.2	193.8	795
22	Rashidpur		3,887.0	3,134.0	1.5	626.0	2,508.0	775
23	Chattak		677.0	474.0	0.0	25.8	448.2	4
24	Beani Bazar		225.0	137.0	0.3	94.9	42.1	1,563
SGFL			8,832.0	7,033.0	4.0	1,685.6	5,347.4	10,916
25	Bangura		730.0	621.0	2.8	422.2	198.8	1,056
Tullow			730.0	621.0	2.8	422.2	198.8	1,056
26	Kutubdia		65.0	46.0	0.0	0.0	46.0	0
Total			35,796.2	28,685.4	81.41	16,378.4	12,307.0	50,432

* Preliminary reserve estimated by BAPEX

** 2P reserve estimation by Petrobangla has crossed the limit. So 2P reserve is estimated as GIIP reserve now.

Production comparison between Oct 2018 & November 2018

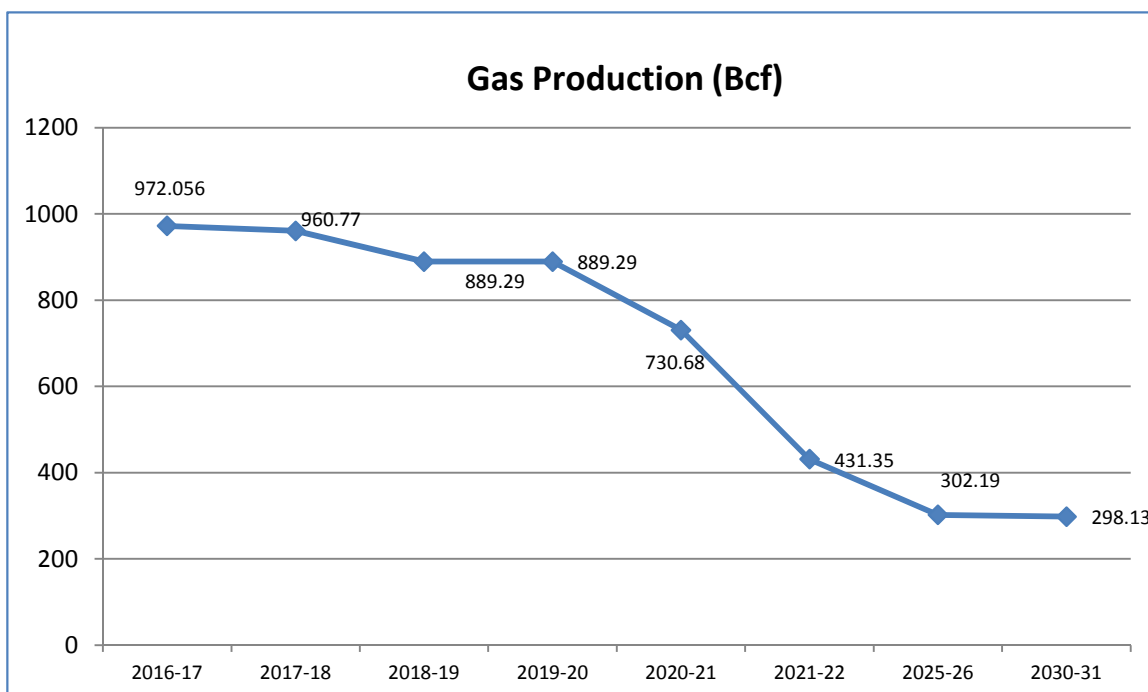


HYDROCARBON UNIT
Energy & Mineral Resources Division

SI No.	Field	Gas Prod. (MMcf) in October'18	Daily Avg. (MMcfd) in October'18	Gas Prod. (MMcf) in November '18	Daily Avg. (MMcfd) in November'18
1	Begumganj	171	6	179	6
2	Shahbazpur	1787	58	1525	51
3	Semutang	23	1	21	1
4	Fenchuganj	346	11	340	11
5	Salda Nadi	138	4	126	4
6	Srikail	1043	34	941	31
7	Sundalpur	210	7	202	7
8	Rupganj	0	0	0	0
Bapex		3718	120	3333	111
9	Meghna	380	12	366	12
10	Narshingdi	849	27	820	27
11	Kamta	0	0	0	0
12	Habiganj	7156	231	6886	230
13	Bakhrabad	869	28	836	28
14	Titas	15990	516	15509	517
BGFCL		25244	814	24417	814
15	Sangu	0	0	0	0
Santos/Cairn		0	0	0	0
16	Bibiyana	40330	1301	38844	1295
17	Moulavi Bazar	795	26	725	24
18	Jalalabad	7605	245	7341	245
Chevron		48729	1572	46909	1564
19	Feni	0	0	0	0
Niko		0	0	0	0
20	Kailas Tila	1899	61	2031	68
21	Sylhet	134	4	132	4
22	Rashidpur	1603	52	1543	51
23	Chattak	0	0	0	0
24	Beani Bazar	275	9	266	9
SGFL		3910	126	3971	132
25	Bangura	2556	82	2777	93
Tullow		2556	82	2777	93
26	Kutubdia	0	0	0	0
		0	0	0	0
Total		84157	2715	81408	2714

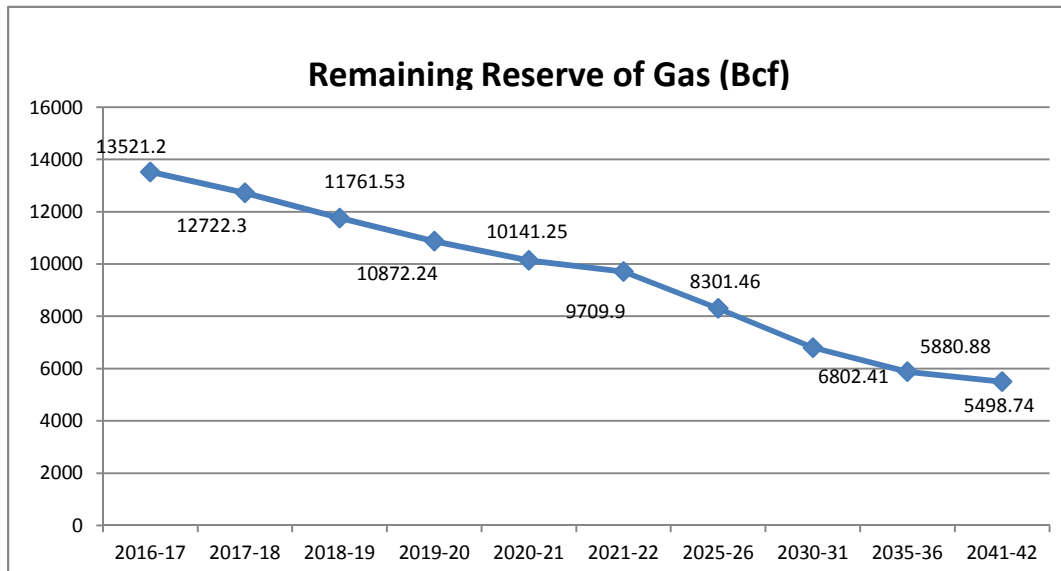
Probable Yearwise Remaining GAS

	Total 2P Reserve	Cumulative Production	production									
			2016-17	2017-18	2018-19	2019-20	2020-21	2021-22	2025-26	2030-31	2035-36	2041-42
Titas	7582	4556.6	191.13	195.42	195.42	195.42	195.42	195.42	195.42	195.42	0	0
Habiganj	2787	2386.8	81.17	79.9	79.9	79.9	79.9	79.9				
kamta	50	21.1	0	0		0	0	0	0	0	0	0
Bakhrabad	1387	806.9	14.26	12.02	12.02	12.02	12.02	12.02	12.02	12.02	12.02	12.02
Narshingdi	345	195	10.32	10.02	10.02	10.02	10.02	10.02	10.02	10.02		
Meghna	101	66.7	4.43	4.62	4.62	4.62	4.62	4.62	1.96			
Feni	130	63	0	0	0	0	0	0	0	0	0	0
Kailas Tila	2880	715	23.72	22.96	22.96	22.96	22.96	22.96	22.96	22.96	22.96	22.96
Sylhet	408	213.5	2.8	1.79	1.79	1.79	1.79	1.79	1.79	1.79	1.79	1.79
Rashidpur	3134	618.1	20.61	19.51	19.51	19.51	19.51	19.51	19.51	19.51	19.51	19.51
Chattak	474	25.8	0	0	0							
Beani Bazar	137	93.6	4.19	3.5	3.5	3.5	3.5	3.5	3.5	1.4		
Shahbazzpur	261	47.5	9.78	15.26	15.26	15.26	15.26	15.26	15.26	15.26		
Semutang	318	12.9	0.78	0.46	0.46	0.46	0.46	0.46	0.46	0.46	0.46	0.46
Fenchuganj	329	156.1	8.77	4.7	4.7	4.7	4.7	4.7	4.7	4.7	4.7	4.7
Saldanadi	275	90.3	1.89	1.06	1.06	1.06	1.06	1.06	1.06	1.06	1.06	1.06
Sundalpur	50.2	10.7	0	0.94	0.94	0.94	0.94	0.94	0.94	0.94	0.94	0.94
Srikail	161	75.1	14.99	12.93	12.93	12.93	12.93	12.93	0			
Jalalabad	1346	1233.3	96.81	92.09	20.61	20.61						
Moulavi Baz	494	317.3	13.71	12.34	12.34	12.34	12.34	12.34	12.34	12.34		
Bibiyana	4532	3357.7	437.17	437.33	437.33	437.33	299.33					
Bangura	621	409.4	35.09	33.67	33.67	33.67	33.67	33.67				
Sangu	771	489.5	0	0	0	0	0	0				
Begumganj	33	0.9	0.006	0	0	0	0	0				
Rupganj	33.6	0.7	0.43	0.25	0.25	0.25	0.25	0.25	0.25	0.25	0.25	0.25
Kutubdia	46	0	0	0	0							
	28685.8	15963.5	972.056	960.77	889.29	889.29	730.68	431.35	302.19	298.13	63.69	63.69



Probable Year wise Remaining GAS

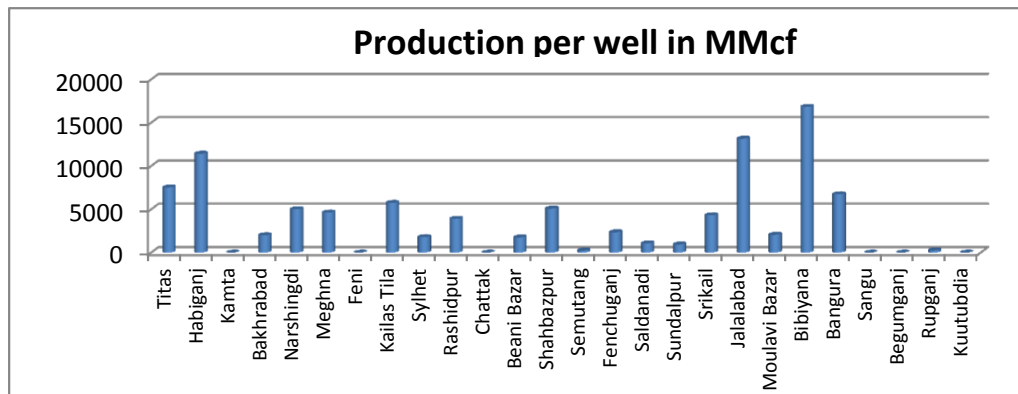
	Total 2p Reserve	Cumulative production	Remaining									
			2016-17	2017-18	2018-19	2019-20	2020-21	2021-22	2025-26	2030-31	2035-36	2041-42
Titas	7582	4556.6	3220.8	3025.4	2829.98	2634.56	2439.14	2243.72	1462.04	484.94	0	0
Habiganj	2787	2386.8	480.1	400.2	320.3	240.4	160.5	80.6			0	0
kamta	50	21.1	28.9	28.9	28.9	28.9	28.9	28.9	28.9	28.9	28.9	28.9
Bakhrabad	1387	806.9	592.1	580.1	568.08	556.06	544.04	532.02	483.94	423.84	363.74	291.62
Narshingdi	345	195	160	150	139.98	129.96	119.94	109.92	69.84	19.74	0	0
Meghna	101	66.7	38.9	34.3	29.68	25.06	20.44	15.82	0	0	0	0
Feni	130	63	67	67	67	67	67	67	67	67	0	0
Kailas Tila	2880	715	2188	2165	2142.04	2119.08	2096.12	2073.16	1981.32	1866.52	1751.72	1613.96
Sylhet	408	213.5	196.3	194.5	192.71	190.92	189.13	187.34	180.18	171.23	162.28	151.54
Rashidpur	3134	618.1	2535.4	2515.9	2496.39	2476.88	2457.37	2437.86	2359.82	2262.27	2164.72	2047.66
Chattak	474	25.8	448.2	448.2	448.2	448.2	448.2	448.2	448.2	448.2	448.2	448.2
Beani Bazar	137	93.6	46.9	43.4	39.9	36.4	32.9	29.4	15.4	0	0	0
Shahbazpur	261	47.5	228.8	213.5	198.24	182.98	167.72	152.46	91.42	15.12	0	0
Semutang	318	12.9	305.6	305.1	304.64	304.18	303.72	303.26	301.42	299.12	296.82	294.06
Fenchuganj	329	156.1	177.6	172.9	168.2	163.5	158.8	154.1	135.3	111.8	88.3	60.1
Saldanadi	275	90.3	185.7	184.7	183.64	182.58	181.52	180.46	176.22	170.92	165.62	159.26
Sundalpur	50.2	10.7	40.4	39.5	38.56	37.62	36.68	35.74	31.98	27.28	22.58	16.94
Srikail	161	75.1	98.9	85.9	72.97	60.04	47.11	34.18	0	0	0	0
Jalalabad	1346	1233.3	42.8	112.7	20.61	0	0	0	0	0	0	0
Moulavi Baz	494	317.3	189.1	176.7	164.36	152.02	139.68	127.34	77.98	16.28	0	0
Bibiyana	4532	3357.7	1611.7	1174.3	736.97	299.64	0	0	0	0	0	0
Bangura	621	409.4	245.2	211.6	177.93	144.26	110.59	76.92	0	0	0	0
Sangu	771	489.5	281.5	281.5	281.5	281.5	281.5	281.5	281.5	281.5	281.5	281.5
Begumganj	33	0.9	32.1	32.1	32.1	32.1	32.1	32.1	32.1	32.1	32.1	32.1
Rupganj	33.6	0.7	33.2	32.9	32.65	32.4	32.15	31.9	30.9	29.65	28.4	26.9
Kutubdia	46	0	46	46	46	46	46	46	46	46	46	46
Total	28685.8	15963.5	13521.2	12722.3	11761.5	10872.2	10141.3	9709.9	8301.46	6802.41	5880.88	5498.74



Production per well & production reserve ratio



	No of well	Total 2p- Recoverable	2017-18 production	production per well mmcf	production reserve ratio
Titas	26	7582	195.42	7516.15	0.026
Habiganj	7	2787	79.9	11414.29	0.029
Kamta	0	50	0	0.00	0.000
Bakhrabad	6	1387	12.02	2003.33	0.009
Narshingdi	2	345	10.02	5010.00	0.029
Meghna	1	101	4.62	4620.00	0.046
Feni	0	130	0	0.00	0.000
Kailas Tila	4	2880	22.96	5740.00	0.008
Sylhet	1	408	1.79	1790.00	0.004
Rashidpur	5	3134	19.51	3902.00	0.006
Chattak	0	474	0	0.00	0.000
Beani Bazar	2	137	3.5	1750.00	0.026
Shahbazpur	3	261	15.26	5086.67	0.058
Semutang	2	318	0.46	230.00	0.001
Fenchuganj	2	329	4.7	2350.00	0.014
Saldanadi	1	275	1.06	1060.00	0.004
Sundalpur	1	50.2	0.94	940.00	0.019
Srikail	3	161	12.93	4310.00	0.080
Jalalabad	7	1346	92.09	13155.71	0.068
Moulavi Bazar	6	494	12.34	2056.67	0.025
Bibiyana	26	4532	437.33	16820.38	0.096
Bangura	5	621	33.67	6734.00	0.054
Sangu	0	771	0	0.00	0.000
Begumganj	0	33	0	0.00	0.000
Rupganj	1	33.6	0.25	250.00	0.007
Kuutubdia	0	46	0	0.00	0.000
Total	111	28685.8	960.77	8655.59	0.033



Monthly Production by Field and Well upto November 2018



HYDROCARBON UNIT
Energy & Mineral Resources Division

Figures in mmscf

Well	Jan	Feb	Mar	Apr	May	Jun	Jul	Aug	Sep	Oct	Nov	Dec	Total	Cumulative	2017	2016	2015
Field : Bakharabad																	
BKB-1	0	0	0	0	0	0	0	0	0	0	0	0	0	141,167	0	0	1,030
BKB-2	44.35	39	41	38	38	37	38	37	35	33	31		411	86,537	543	731	873
BKB-3	202.35	184	182	158	160	161	165	162	152	157	152		1,835	160,691	2,249	2,223	1,620
BKB-4	0	0	0	0	0	0	0	0	0	0	0			55,872			
BKB-5	155.66	141	152	149	155	149	154	155	150	155	150		1,667	58,656	1,847	1,814	1,821
BKB-6	0	0	0	0	0	0	0	0	0	0	0		0	50,069			
BKB-7	0	0	0	0	0	0	0	0	0	0	0		0	107,750	0	0	1,399
BKB-8	198.43	177	192	161	165	165	166	164	155	161	155		1,859	126,103	3,462	4,142	3,536
BKB-9	320.41	280	304	291	285	277	280	279	257	259	250		3,081	20,871	3,637	4,160	4,287
BKB-10	121.80	108	117	110	113	108	110	109	101	104	98		1,199	3,575	1,453	924	
Field Total:	1,043	928	987	907	915	897	912	906	851	869	836	0	10,051	811,289	13,190	13,070	14,565
Daily Avg.(mmscfd)	34	33	32	30	30	30	29	29	28	28	28	0	30		36	36	40
Field : Bangura																	
Bangura-1	467	403	411	383	379	369	382	327	365	380	367		4,231	88,870	4,914	4,886	5,316
Bangura-2	628	552	610	578	697	568	572	498	537	542	497		6,279	79,015	7,837	9,200	10,167
Bangura-3	662	587	640	620	625	602	615	542	596	610	573		6,671	96,133	8,662	10,038	10,942
Bangura-6	358	322	740	698	358	345	353	311	342	350	329		4,506	8,606	4,100		
Bangura-5	759	670	351	342	736	698	699	610	663	674	1,012		7,215	149,548	9,699	11,514	12,347
Field Total:	2,875	2,533	2,753	2,622	2,794	2,582	2,621	2,287	2,502	2,556	2,777	0	28,903	422,171	35,212	35,639	38,773
Daily Avg.(mmscfd)	93	90	89	87	90	86	85	74	83	82	93	0	87		96	98	106
Field : Beani Bazar																	
BB-1	0	0	0	0	0	0	0	0	0	0	0		0	35,481	1,023	33	0
BB-2	281	251	279	272	279	271	279	278	269	275	266		2,999	59,459	3,282	3,431	3,477
Field Total:	281	251	279	272	279	271	279	278	269	275	266	0	2,999	94,940	4,306	3,464	3,477
Daily Avg.(mmscfd)	9	9	9	9	9	9	9	9	9	9	9	0	9		12	9	10
Field : Bibiyana																	
BY-1	2,807	2,069	2,766	2,778	3,056	2,612	2,980	1,317	334	348	339		21,406	367,548	35,595	35,050	31,887
BY-2	1,913	1,349	1,823	1,764	1,902	1,567	1,832	1,806	1,874	1,947	1,827		19,605	272,644	23,957	20	16,096
BY-3	637	740	965	672	756	677	992	537	214	2	0		6,192	235,213	9,904	16,873	19,957
BY-4	1,342	1,062	2,189	2,345	2,924	2,280	2,708	2,552	2,786	2,893	2,786		25,867	177,845	6,571	7,322	11,070
BY-5	364	323	186	70	54	50	790	920	942	859	774		5,332	171,168	8,117	9,229	10,856
BY-6	1,008	657	986	1,041	967	816	968	730	937	965	1,007		10,082	220,520	11,879	15,208	16,520
BY-7	471	1,286	1,881	2,468	528	262	2,367	2,685	2,825	2,901	2,773		20,446	241,874	32,874	33,040	10,895
BY-8	785	562	740	790	783	734	784	781	726	792	760		8,238	133,561	12,486	2,987	5,237
BY-9	53	0	12	0	0	0	274	896	790	744	669		3,439	123,963	6,247	6,820	7,197

Monthly Production by Field and Well upto November 2018



HYDROCARBON UNIT
Energy & Mineral Resources Division

Figures in mmscf

Well	Jan	Feb	Mar	Apr	May	Jun	Jul	Aug	Sep	Oct	Nov	Dec	Total	Cumulative	2017	2016	2015
BY-10	2,605	1,922	2,790	2319	2,895	2,541	2617	2,644	2,716	2,806	2667		28,523	332,566	32,967	33,582	32,542
BY-11	550	802	1,035	1042	1,192	1,055	1091	1,061	1,100	1,119	1050		11,097	118,911	6,813	9,357	12,458
BY-12	630	437	635	558	613	567	571	592	568	547	554		6,274	122,143	8,284	10,574	12,677
BY-13	782	768	1,144	1226	1,231	911	1199	1,183	1,208	1,227	1167		12,045	71,834	11,842	15,603	19,645
BY-14	1,043	752	1,176	1114	967	741	1038	971	923	924	941		10,590	89,680	15,354	15,170	25,721
BY-15	2,006	1,399	2,085	1931	2,103	1,807	2111	2,070	2,256	2,198	2164		22,128	94,754	19,111	17,698	16,439
BY-16	826	615	878	904	777	617	843	796	821	850	786		8,713	60,522	12,541	15,844	18,446
BY-17	1,401	885	1,389	1412	1,244	1,420	1401	1,550	1,545	1,674	1851		15,772	76,040	15,412	15,463	23,304
BY-18	2,552	1,879	2,613	2665	2,548	2,568	2593	2,696	2,834	3,018	3017		28,984	114,897	29,509	33,072	23,332
BY-19	797	588	763	717	653	658	686	635	687	695	648		7,528	31,461	9,859	9,383	4,691
BY-20	427	513	706	717	691	706	702	664	669	717	684		7,196	37,201	6,533	9,282	14,190
BY-21	943	688	914	801	847	717	818	799	813	838	778		8,956	34,509	13,246	8,533	3,775
BY-22	2,150	1,536	2,231	1952	2,174	1,777	2082	2,107	2,147	2,259	2220		22,634	105,678	27,093	33,387	22,565
BY-23	2,684	1,990	2,699	2614	2,799	2,368	2756	2,772	2,882	2,956	2786		29,305	49,309	15,333	4,405	266
BY-24	1,142	715	1,101	875	1,228	1,205	1254	1,333	1,333	1,175	973		12,333	57,229	13,484	15,265	13,497
BY-25	2,332	1,855	2,275	2209	2,629	2,223	2344	2,448	2,432	2,643	2541		25,933	102,806	30,331	33,282	13,260
BY-26	2,706	2,004	2,775	2533	2,931	2,691	2938	2,985	3,078	3,232	3080		30,954	112,667	30,446	33,167	18,099
Field Total:	34958	27394	38761	37517	38490	33568	40738	39531	39439	40330	38844	0	409,570	3,556,543	445,787	439,615	404,621
Daily Avg.(mmscfd)	1128	978	1250	1251	1242	1119	1314	1,275	1,315	1,301	1,295	0	1,226		1,221	1,204	1,109
Field :	Chattak																
Ch-1	Production Suspended													25,834			
Field Total:	0											0		25,834			
Daily Avg.(mmscfd)	0											0		0			
Field :	Fenchuganj																
Fenchuganj-2	0	0	0	0	0	0	0	0	0	0	0	0	0	38,169	0	0	0
Fenchuganj-3	395	352	349	241	239	214	225	224	222	236	235		2,933	90,385	6,192	7,606	7,564
Fenchuganj-4	14	30	32	3	20	90	106	106	105	110	105		720	29,185	441	3,189	5,834
Field Total:	409	382	381	244	260	304	331	330	327	346	340	0	3,652	157,738	6,633	10,795	13,398
Daily Avg.(mmscfd)	13	14	12	8	8	10	11	11	11	11	11	0	11		18	30	37
Field :	Feni																
Feni-1	Production Suspended									0	0	34,214					
Feni-2	Production Suspended									0	0	6,119					
Feni-3	Production Suspended									0	0	2,176					

Monthly Production by Field and Well upto November 2018



HYDROCARBON UNIT
Energy & Mineral Resources Division

Figures in mmscf

Well	Jan	Feb	Mar	Apr	May	Jun	Jul	Aug	Sep	Oct	Nov	Dec	Total	Cumulative	2017	2016	2015				
Feni-4	Production Suspended								0									14,386			
Feni-5	Production Suspended								0									6,127			
Field Total:													63,023								
Daily Avg.(mmscfd)																					
Field : Habiganj																					
Hbj-1	0	0	0	0	0	0	0	395	456	467	441		1,759	277,660	0	0	0				
Hbj-2	0	0	0	0	0	0	0	0	0	0	0		0	275,704	0	0	0				
Hbj-3	1,118	1,008	1,120	1084	1,120	1,077	1126	1,122	1,091	1,118	1,074		12,057	376,059	13,151	13,227	13,080				
Hbj-4	1,118	1,008	1,120	1084	1,120	1,077	1126	1,122	1,091	1,118	1,074		12,057	370,517	13,151	13,227	13,080				
Hbj-5	808	728	809	783	809	778	813	812	788	807	773		8,706	296,884	9,497	9,552	9,446				
Hbj-6	467	421	468	453	468	450	470	468	455	466	446		5,030	161,753	5,491	5,523	5,462				
Hbj-7	1,243	1,126	1,243	1201	1,241	1,196	1234	1,233	1,189	1,229	1,193		13,328	251,914	14,565	14,685	14,659				
Hbj-8	0	0	0	0	0	0	0	0	0	0	0		0	11,023	0	0	0				
Hbj-9	0	0	0	0	0	0	0	0	0	0	0		0	52,652	0	0	0				
Hbj-10	1,196	1,084	1,196	1156	1,195	1,151	1188	1,186	1,145	1,183	1,142		12,822	252,026	14,058	14,629	14,659				
Hbj-11	839	760	839	811	838	807	834	832	781	768	744		8,855	95,584	10,398	11,247	11,367				
Field Total:	6,790	6,135	6,793	6,572	6,792	6,535	6790	7,169	6,995	7,156	6,886	0	74,613	2,421,774	80,313	82,091	81,752				
Daily Avg.(mmscfd)																					
	219	219	219	219	219	218	219	231	233	231	230	0	223		220	225	224				
Field : Jalalabad																					
JB-1	1,048	791	800	871	898	857	898	829	860	891	860		9,604	244,904	9,142	11,951	18,014				
JB-2	1,140	1,054	1,130	1086	1,115	1,027	1115	986	1,071	1,106	1,068		11,899	278,522	14,517	17,057	20,012				
JB-3	1,510	1,414	1,515	1448	1,487	1,413	1487	1,372	1,424	1,473	1,424		15,967	339,092	19,162	21,086	26,552				
JB-4	586	568	621	452	465	440	465	429	444	461	445		5,375	278,554	7,045	8,313	20,427				
JB-6	1,510	1,415	1,513	1448	1,487	1,412	1487	1,340	1,423	1,477	1,422		15,933	57,893	19,524	19,136	3,300				
JB-7	1,202	1,021	1,159	1086	1,115	1,058	1115	980	1,069	1,106	1,068		11,979	28,316	10,324	5,254	760				
JB-8	1,125	1,026	1,098	1071	1,099	1,051	1100	967	1,053	1,091	1,053		11,734	42,871	14,513	16,252	372				
Field Total:	8,121	7,290	7,836	7,461	7,665	7,257	7667	6,903	7,345	7,605	7,341	0	82,491	1,270,153	94,226	99,048	89,437				
Daily Avg.(mmscfd)																					
	262	260	253	249	247	242	247	223	245	245	245	0	247		258	271	245				
Field : Kailas Tila																					
KTL-1	0	0	0	0	0	0	0	0	0	0	215		215	204,562	0	0	0				

Monthly Production by Field and Well upto November 2018



HYDROCARBON UNIT
Energy & Mineral Resources Division

Figures in mmscf

Well	Jan	Feb	Mar	Apr	May	Jun	Jul	Aug	Sep	Oct	Nov	Dec	Total	Cumulative	2017	2016	2015
KTL-2	620	555	611	592	609	594	611	611	594	610	586		6,593	177,549	7,242	7,282	7,111
KTL-3	279	226	249	240	248	241	248	249	240	248	239		2,708	137,580	3,255	5,003	5,920
KTL-4	293	261	289	279	291	283	292	292	277	276	253		3,085	95,845	3,680	3,499	4,009
KTL-5	0	0	0	0	0	0	0	0	0	0	0		0	17,923	0	0	0
KTL-6	768	683	758	732	755	738	760	766	741	765	736		8,203	90,342	9,086	8,975	8,732
KTL-7	0	0	0	0	0	0	0	0	0	0	0		0	816	0	329	487
Field Total:	1,961	1,724	1,907	1,844	1,904	1,856	1,911	1,917	1,852	1,899	2,031	0	20,804	724,617	23,263	25,088	26,259
Daily Avg.(mmscfd)	63	62	62	61	61	62	62	62	62	61	68	0	62		64	69	72
Field : Kamta																	
Kamta-1	Production Suspended													21,139			
Field Total:														21,139			
Daily Avg.(mmscfd)																	
Field : Meghna																	
M-1	396	356	390	380	385	377	383	383	370	380	366		4,165	68,601	4,625	4,425	3,838
Field Total:	396	356	390	380	385	377	383	383	370	380	366	0	4,165	68,601	4,625	4,425	3,838
Daily Avg.(mmscfd)	13	13	13	13	12	13	12	12	12	12	12	0	12		13	12	11
Field : Moulavi Bazar																	
MV Bazar-2	217	191	218	215	216	142	220	200	182	190	165		2,156	53,893	2,866	3,201	2,889
MV Bazar-3	356	318	343	334	332	230	344	312	322	289	277		3,457	157,553	4,705	5,394	6,116
MV Bazar-4	254	238	301	329	359	240	309	257	210	213	193		2,904	57,868	3,945	4,141	2,927
MV Bazar-5	Production Suspended		0	0	0	0	0	0	0	0	0	0		66			
MV Bazar-6	174	156	175	168	180	127	174	151	118	103	89		1,616	16,231	1,676	1,737	2,198
MV Bazar-7	4	3	3	2	3	1	2	2	0	0	0		21	5,644	152	123	1,433
MV Bazar-9	0	1	0	0	0	0	0	0	0	0	0		1	30,335	0	41	474
Field Total:	1,005	907	1,039	1,049	1,091	740	1050	921	833	795	725	0	10,154	321,590	13,345	14,638	16,037
Daily Avg.(mmscfd)	32	32	34	35	35	25	34	30	28	26	24	0	30		37	40	44
Field : Narshingdi																	
N-1	535	479	523	511	524	493	526	528	515	536	506		5,675	144,089	6,279	6,242	6,239
N-2	308	282	321	309	319	297	314	313	300	313	314		3,391	55,055	3,962	4,122	3,914

Monthly Production by Field and Well upto November 2018



HYDROCARBON UNIT
Energy & Mineral Resources Division

Figures in mmscf

Well	Jan	Feb	Mar	Apr	May	Jun	Jul	Aug	Sep	Oct	Nov	Dec	Total	Cumulative	2017	2016	2015
Field Total:	843	761	845	820	843	790	840	840	815	849	820	0	9,066	199,144	10,241	10,364	10,154
Daily Avg.(mmscfd)	27	27	27	27	27	26	27	27	27	27	27	0	27		28	28	28
Field : Rashidpur																	
RP-1	568	508	562	538	554	507	549	570	539	549	527		5,970	166,528	6,625	6,639	6,423
RP-2	0	0	0	0	0	0	0	0	0	0	0			82,474			
RP-3	307	276	303	291	302	291	301	298	288	298	288		3,243	130,910	3,730	3,877	4,177
RP-4	289	259	284	273	281	244	276	270	260	268	258		2,961	127,629	3,516	3,675	3,683
RP-5	0	0	0	0	0	0	0	0	0	0	0			25,647			
RP-6	0	0	0	0	0	0	0	0	0	0	0		0	9,983	0	0	0
RP-7	187	169	186	178	185	158	182	172	167	174	168		1,924	64,153	2,225	2,355	2,236
RP-8	318	287	316	303	306	302	315	313	305	314	302		3,382	18,719	3,977	4,422	5,115
Field Total:	1,668	1,498	1,650	1,583	1,628	1,502	1,623	1,623	1,559	1,603	1,543	0	17,480	626,043	20,074	20,969	21,634
Daily Avg.(mmscfd)	54	54	53	53	53	50	52	52	52	52	51	0	52		55	57	59
Field : Salda Nadi																	
Salda-1	0	0	0	0	0	0	0	0	0	0	0	0	0	36,904	0	0	0
Salda-2	0	0	0	0	0	0	0	0	0	0	0	0	0	28,495	0	0	0
Salda-3	49	52	54	54	56	53	86	139	139	132	125		939	25,452	1,514	2,350	3,546
Salda-4	10	7	5	6	6	5	13	4	3	5	1		65	112	14	34	
Field Total:	59	59	59	59	62	58	99	143	142	138	126	0	1,004	90,963	1,527	2,383	3,546
Daily Avg.(mmscfd)	2	2	2	2	2	2	3	5	5	4	4	0	3		4	7	10
Field : Sangu																	
Sangu-1	0	0	0	0	0	0	0	0	0	0	0		0	116,191	0	0	0
Sangu-3z	0	0	0	0	0	0	0	0	0	0	0		0	131,796	0	0	0
Sangu-4	Production Suspended							0	0	0	0	0		87,280			
Sangu-5	Production Suspended							0	0	0	0	0		61,674			
Sangu-7	Production Suspended							0	0	0	0	0		18,202			
Sangu-8	Production Suspended							0	0	0	0	0		37,619			
Sangu-9	0	0	0	0	0	0	0	0	0	0	0		0	30,638	0	0	0
Sangu-10	Production Suspended							0	0	0	0	0					
Sangu-11	0	0	0	0	0	0	0	0	0	0	0		0	6,067	0	0	0

Monthly Production by Field and Well upto November 2018



HYDROCARBON UNIT
Energy & Mineral Resources Division

Figures in mmscf

Well	Jan	Feb	Mar	Apr	May	Jun	Jul	Aug	Sep	Oct	Nov	Dec	Total	Cumulative	2017	2016	2015
Field Total:	0	0	0	0	0	0	0	0	0	0	0	0	0	489,467	0	0	0
Daily Avg.(mmscfd)	0	0	0	0	0	0	0	0	0	0	0	0	0		0	0	0
Field : Semutang																	
Semutang-5	39	31	39	33	29	25	23	16	17	15	13		279	12,053	471	946	1,389
Semutang-6	8	7	8	7	6	6	6	6	6	8	7		76	948	66	0	15
Field Total:	47	37	47	40	36	30	29	22	23	23	21	0	355	13,001	537	946	1,403
Daily Avg.(mmscfd)	2	1	2	1	1	1	1	1	1	1	1	0	1		1	3	4
Field : Shahbazpur																	
Shahbazpur-1	134	0	0	0	0	0	0	0	0	0	0		134	21,358	4,835	3,623	2,268
Shahbazpur-2	324	5	423	598	648	689	728	708	696	677	573		6,068	10,500	4,243	189	0
Shahbazpur-3	291	444	453	369	406	471	472	500	478	490	387		4,762	11,867	1,162	3,116	2,826
Shahbazpur-4	452	647	643	458	599	592	616	631	618	620	565		6,442	12,509	1,801	1,091	3,175
Field Total:	1,202	1,095	1,519	1,425	1,653	1,753	1,816	1,839	1,792	1,787	1,525	0	17,407	56,234	12,041	8,019	8,269
Daily Avg.(mmscfd)	39	39	49	47	53	58	59	59	60	58	51	0	52		33	22	23
Field : Srikail																	
Srikail-2	440	403	435	423	430	409	439	418	437	453	412		4,698	37,487	5,384	6,064	6,150
Srikail-3	382	340	378	359	369	350	364	356	357	347	313		3,915	34,474	4,944	6,607	7,919
Srikail-4	265	239	264	250	258	237	244	240	251	243	217		2,709	8,184	3,439	2,035	
Field Total:	1,086	982	1,077	1,032	1,057	996	1,047	1,014	1,045	1,043	941	0	11,322	80,145	13,767	14,707	14,070
Daily Avg.(mmscfd)	35	35	35	34	34	33	34	33	35	34	31	0	34		38	40	39
Field : Sundalpur																	
Sundalpur -1	0	0	0	0	0	0	0	0	0	0	0		0	9,809	0	552	1,425
Sundalpur -2	51	142	158	178	207	200	208	210	203	210	202		1,970	1,970	0	0	0
Field Total:	51	142	158	178	207	200	208	210	203	210	202	0	1,970	11,779	0	552	1,425
Daily Avg.(mmscfd)	2	5	5	6	7	7	7	7	7	7	7	0	6		0	2	4
Field : Sylhet																	
Sylhet-3	Production Suspended												89,032				
Sylhet-6	Production Suspended												91,748				

Monthly Production by Field and Well upto November 2018



HYDROCARBON UNIT
Energy & Mineral Resources Division

Figures in mmscf

Well	Jan	Feb	Mar	Apr	May	Jun	Jul	Aug	Sep	Oct	Nov	Dec	Total	Cumulative	2017	2016	2015
Sylhet-7	146	133	138	134	136	131	135	135	131	134	132		1,485	26,854	2,061	2,212	2,239
Surma-1	0	0	0	0	0	0	0	0	0		0		0	6,528	249	720	791
Field Total:	146	133	138	134	136	131	135	135	131	134	132	0	1,485	214,162	2,309	2,932	3,031
Daily Avg.(mmscfd)	5	5	4	4	4	4	4	4	4	4	4	0	4		6	8	8
Field :	Titas																
Titas-1	758	665	743	767	786	702	722	691	668	688	672		7,861	438,974	7,897	9,999	10,555
Titas-2	1,022	875	956	949	972	923	996	987	963	985	947		10,574	434,557	11,506	11,474	13,015
Titas-3	Production Suspended			0	0	0	0	0	0	0	0		0	314,888			
Titas-4	1,001	892	964	960	1,000	945	1009	994	970	995	995		10,726	369,451	11,798	12,782	12,882
Titas-5	1,016	902	984	1002	1,002	944	1004	991	969	999	1,000		10,813	427,228	11,869	10,692	13,118
Titas-6	997	919	1,053	1036	1,065	964	1027	1,005	991	1,004	973		11,034	362,132	12,029	12,809	12,958
Titas-7	1,041	924	1,003	988	1,040	988	1025	998	1,007	1,015	921		10,949	343,894	11,707	12,125	12,259
Titas-8	524	472	523	521	542	490	526	531	515	510	501		5,656	272,138	6,889	7,046	7,162
Titas-9	586	508	552	546	580	552	587	567	580	581	536		6,175	275,959	8,246	8,467	8,355
Titas-10	651	583	639	631	652	611	651	650	630	649	630		6,976	198,365	7,431	4,350	2,425
Titas-11	892	812	915	877	837	786	778	743	820	831	869		9,159	246,062	10,276	9,075	10,129
Titas-12	415	395	436	421	437	417	433	433	422	432	450		4,692	100,307	5,168	5,326	5,218
Titas-13	623	555	619	599	613	606	605	557	508	534	562		6,381	189,521	7,879	9,553	10,106
Titas-14	673	590	645	631	652	593	609	571	566	563	566		6,658	149,441	8,309	8,888	9,582
Titas-15	433	404	463	490	507	467	487	471	468	467	445		5,102	139,073	7,973	11,777	12,315
Titas-16	782	677	747	726	745	704	738	716	717	712	671		7,935	145,676	10,060	11,333	11,966
Titas-17	556	499	560	539	547	533	542	509	523	533	488		5,828	38,996	7,011	7,359	7,080
Titas-18	587	527	589	569	572	558	558	539	553	561	513		6,126	37,467	7,168	7,338	7,075
Titas-19	516	481	529	516	534	511	525	519	504	491	487		5,613	27,547	6,106	6,253	6,309
Titas-20	321	291	323	311	534	308	309	311	302	314	292		3,615	18,528	3,635	3,645	3,604
Titas-21	249	224	248	240	255	254	261	260	253	250	241		2,736	8,973	2,800	1,572	0
Titas-22	373	335	363	348	360	355	373	355	336	342	328		3,868	24,128	4,336	5,497	6,468
Titas-27	508	458	496	481	496	478	496	485	479	493	475		5,344	28,356	6,136	6,233	6,193
Titas-23	485	442	487	461	474	458	469	463	450	473	444		5,105	9,515	4,410		
Titas-24	248	224	248	236	236	228	224	227	215	217	202		2,506	4,789	2,283		
Titas-25	532	479	534	521	543	527	542	549	530	539	510		5,806	11,697	5,622	269	
Titas-26	816	742	832	805	826	797	827	819	786	813	791		8,853	18,447	9,210	383	

Monthly Production by Field and Well upto November 2018



HYDROCARBON UNIT
Energy & Mineral Resources Division

Figures in mmscf

Well	Jan	Feb	Mar	Apr	May	Jun	Jul	Aug	Sep	Oct	Nov	Dec	Total	Cumulative	2017	2016	2015
Field Total:	16,604	14,874	16,451	16,171	16,807	15,699	16320	15,941	15,726	15,990	15,509	0	176,092	4,636,107	197,756	184,246	188,773
Daily Avg.(mmscfd)	536	531	531	539	542	523	526	514	524	516	517	0	527		542	505	517
Field : Begumganj																	
Begumganj-3	0	0	0	0	0	0	0	0	69	171	179		419	1,295	0	85	791
Field Total:	0	0	0	0	0	0	0	0	69	171	179	0	419	1,295	0	85	791
Daily Avg.(mmscfd)	0	0	0	0	0	0	0	0	2	6	6	0	1		0	0	2
Field : Rupganj																	
Rupganj-1	0	0											0	679	679		
Field Total:	0	0	0	0	0	0	0	0	0	0	0	0	0	679	679		
Daily Avg.(mmscfd)	0	0	0	0	0	0	0	0	0	0	0	0	0		2		
Grand Total (in Bcf)	79.54	67.48	83.07	80.31	83.00	75.55	85	82.39	82.29	84.16	81.41	0.00	884.0	16,378.4	979.8	973.1	945.3
Daily Avg.(mmscfd)	2,566	2,410	2,680	2,677	2,678	2,518	2736	2,658	2,743	2,715	2,714	0	2,647		2,684	2,666	2,590

Monthly Condensate Production by Fields upto November 2018



Field Name	Jan-18	Feb-18	Mar-18	Apr-18	May-18	Jun-18	Jul-18	Aug-18	Sep-18	Oct-18	Nov-18	Dec-18	Total	Cumulative	2017	2016	2015
														000' bbl			
Bakhrabad	574	499	381	360	391	390	415	418	362	371	360		4,521	1,019	6,173	7,091	6,632
Daily Avg.	19	18	12	12	13	13	13	13	12	12	12	0	14		17	229	214
Bangura	8,773	7,740	7,919	7,772	7,948	7,593	7,633	6,683	7,336	7,574	8,398		85,369	1,056	103,198	103,416	108,140
Daily Avg.	283	276	255	259	256	253	246	216	245	244	280	0	256		283	3,336	3,488
Beani Bazar	4,559	3,897	4,497	4,321	4,461	4,239	4,304	4,208	4,039	4,241	4,152		46,919	1,563	68,202	56,146	55,563
Daily Avg.	147	139	145	144	144	141	139	136	135	137	138	0	140		187	1,811	1,792
Bibiyana	287,672	261,508	280,664	276,022	277,580	241,906	279,694	278,110	272,978	277,617	269,303		3,003,053	20,890	3,283,757	3,291,906	2,277,248
Daily Avg.	9,280	9,340	9,054	9,201	8,954	8,064	9,022	8,971	9,099	8,955	8,977	0	8,991		8,997	106,191	73,460
Chattak	0	0	0	0	0	0	0	0	0	0	0		0	4			
Daily Avg.	0	0	0	0	0	0	0	0	0	0	0		0				
Fenchuganj	143	123	135	96	141	121	139	167	144	144	130		1,483	115	2,462	6,138	8,895
Daily Avg.	5	4	4	3	5	4	4	5	5	5	4	0	4		7	198	287
Feni	0	0	0	0	0	0	0	0	0	0	0		0	110	0	0	0
Daily Avg.	0	0	0	0	0	0	0	0	0	0	0		0		0	0	0
Habiganj	337	303	337	327	327	329	319	574	770	710	621		4,954	129	3,955	4,143	4,075
Daily Avg.	11	11	11	11	11	11	10	19	26	23	21	0	15		11	134	131
Jalalabad	35,294	31,133	33,027	30,950	31,442	29,727	31,062	28,287	28,936	28,875	28,751		337,484	10,109	437,070	528,191	577,549
Daily Avg.	1,139	1,112	1,065	1,032	1,014	991	1,002	912	965	931	958	0	1,010		1,197	17,038	18,631
Kailas Tila	16,735	19,090	17,805	14,349	15,754	15,786	13,661	14,201	15,412	15,341	16,239		174,372	7,779	203,979	223,169	250,829
Daily Avg.	540	682	574	478	508	526	441	458	514	495	541	0	522		559	7,199	8,091
Kamta	Production Suspended										0	0		4			
Daily Avg.											0	0		0		0	
Meghna	649	587	660	641	687	655	667	667	828	679	604		7,324	107	7,741	7,735	6,952
Daily Avg.	21	21	21	21	22	22	22	22	28	22	20	0	22		21	250	224
Moulavi Bazar	109	90	89	77	83	49	74	67	68	65	3		774	117	1,128	1,585	1,606
Daily Avg.	4	3	3	3	3	2	2	2	2	2	0	0	2		3	51	52

Monthly Condensate Production by Fields upto November 2018



Field Name	Jan-18	Feb-18	Mar-18	Apr-18	May-18	Jun-18	Jul-18	Aug-18	Sep-18	Oct-18	Nov-18	Dec-18	Total	Cumulative	2017	2016	2015
														000' bbl			
Narshingdi	1,390	1,226	1,359	1,329	1,388	1,288	1,364	1,308	1,297	1,324	1,260		14,533	417	16,656	17,534	17,840
Daily Avg.	45	44	44	44	45	43	44	42	43	43	42	0	44		46	566	575
Rashidpur	718	564	966	1,136	1,423	1,282	1,361	1,497	1,522	1,449	1,292		13,209	775	10,723	14,938	17,853
Daily Avg.	23	20	31	38	46	43	44	48	51	47	43	0	40		29	482	576
Saldanadi	0	2	0	0	0	0	10	64	15	14	14		120	58	225	386	550
Daily Avg.	0	0	0	0	0	0	0	2	0	0	0	0	0		1	12	18
Sangu	0	0	0	0	0	0	0	0	0	0	0		0	37	0	0	0
Daily Avg.	0	0	0	0	0	0	0	0	0	0	0	0	0		0	0	0
Semutang	0	3	4	6	3	1	4	0	1	1	3		26	5	99	272	531
Daily Avg.	0	0	0	0	0	0	0	0	0	0	0	0	0		0	9	17
Shahbazpur	181	145	198	171	201	203	206	271	259	262	208		2,306	6	1,791	839	816
Daily Avg.	6	5	6	6	6	7	7	9	9	8	7	0	7		5	27	26
Srikail	2,966	2,608	2,924	2,812	2,578	2,650	2,825	2,804	2,883	2,994	2,573		30,616	125	37,879	21,075	10,527
Daily Avg.	96	93	94	94	83	88	91	90	96	97	86	0	92		104	680	340
Sundalpur	0	3	5	3	2	2	2	20	51	14	8		112	0	0	0	39
Daily Avg.	0	0	0	0	0	0	0	1	2	0	0	0	0		0	0	1
Sylhet	987	772	650	932	931	851	868	776	708	821	993		9,289	795	15,593	20,532	22,261
Daily Avg.	32	28	21	31	30	28	28	25	24	26	33	0	28		43	662	718
Titas	14,787	13,325	13,121	13,763	13,841	12,515	12,992	13,049	12,911	13,041	12,862		146,207	5,210	154,262	133,133	134,637
Daily Avg.	477	476	423	459	446	417	419	421	430	421	429	0	438		423	4,295	4,343
Begumganj	0	0	0	0	0	0	0	0	19	54	64		138	0	0	0	143
Daily Avg.	0	0	0	0	0	0	0	0	0	2	2	0	0		0	0	5
Rupganj	0	0	0	0	0	0	0	0	0	0	0		0	1	1,133		
Daily Avg.	0	0	0	0	0	0	0	0	0	0	0	0	0		3		
Total (000'bbl)	376	344	365	355	359	320	358	353	351	356	348	0	3,883	50,432	4,356	4,438	3,499
Daily Avg. (000'bbl)	12.1	12.3	11.8	11.8	11.6	11	11.5	11.4	11.7	11.5	12	0	12		11.9	12.2	9.6

Note: Historical condensate figure of Sangu available from 2006. Sylhet available from August 1964

Monthly Water Production by Fields in November 2018



Field Name	Jan-18	Feb-18	Mar-18	Apr-18	May-18	Jun-18	Jul-18	Aug-18	Sep-18	Oct-18	Nov-18	Dec-18	Total	2,017
Bakhrabad	2,868	2,279	2,356	2,280	2,356	2,304	2,440	2,433	2,202	2,232	2,160		25,910	8,419
Daily Avg.	93	81	76	76	76	77	79	78	73	72	72	0	85	
Bangura	3,961	3,560	3,864	3,712	3,852	3,756	3,846	3,369	3,718	3,806	3,223		40,667	11,705
Daily Avg.	128	127	125	124	124	125	124	109	124	123	107	0	134	
Beani Bazar	8,498	7,789	8,836	8,831	9,311	9,171	9,518	9,589	9,385	9,662	9,408		99,998	24,865
Daily Avg.	274	278	285	294	300	306	307	309	313	312	314	0	329	
Bibiyana	16,080	14,564	17,086	15,346	16,210	14,753	17,196	16,040	16,990	17,183	16,629		178,077	47,219
Daily Avg.	519	520	551	512	523	492	555	517	566	554	554	0	586	
Chattak	0	0	0	0	0	0	0	0	0	0	0			
Daily Avg.	0	0	0	0	0	0	0	0	0	0	0	0	0	
Fenchuganj	2,499	2,423	2,553	2,165	3,234	6,760	7,890	8,606	8,974	9,746	10,492		65,340	6,700
Daily Avg.	81	87	82	72	104	225	255	278	299	314	350	0	215	
Feni	0	0	0	0	0	0	0	0	0	0	0		0	0
Daily Avg.	0	0	0	0	0	0	0	0	0	0	0	0	0	0
Habiganj	1,760	1,580	1,772	1,706	1,706	2,721	3,723	4,079	4,201	4,675	5,215		33,138	5,197
Daily Avg.	57	56	57	57	55	91	120	132	140	151	174	0	109	
Jalalabad	4,132	4,539	4,717	4,495	4,616	4,662	4,990	4,635	4,794	4,858	4,731		51,168	12,915
Daily Avg.	133	162	152	150	149	155	161	150	160	157	158	0	168	
Kailas Tila	3,037	3,171	3,589	3,477	3,620	3,565	2,876	2,883	3,563	3,736	5,832		39,348	6,809
Daily Avg.	98	113	116	116	117	119	93	93	119	121	194	0	129	
Kamta	0	0	0	0	0	0	0	0	0	0	0			
Daily Avg.	0	0	0	0	0	0	0	0	0	0	0	0	0	
Meghna	173	168	173	173	175	164	166	165	164	166	161		1,848	551
Daily Avg.	6	6	6	6	6	5	5	5	5	5	5	0	6	
Moulavi Baza	326	268	268	657	355	401	892	1,518	2,379	2,084	2,929		12,077	754
Daily Avg.	11	10	9	22	11	13	29	49	79	67	98	0	40	
Narshingdi	888	798	884	857	884	844	885	885	854	884	856		9,519	2,645
Daily Avg.	29	29	29	29	29	28	29	29	28	29	29	0	31	
Rashidpur	10,397	9,335	10,279	9,865	10,982	10,829	12,023	12,469	12,193	12,954	12,815		124,141	30,969
Daily Avg.	335	333	332	329	354	361	388	402	406	418	427	0	408	
Saldanadi	8	7	0	0	0	0	83	151	147	142	138		676	387
Daily Avg.	0	0	0	0	0	0	3	5	5	5	5	0	2	

Monthly Water Production by Fields in November 2018



Field Name	Jan-18	Feb-18	Mar-18	Apr-18	May-18	Jun-18	Jul-18	Aug-18	Sep-18	Oct-18	Nov-18	Dec-18	Total	
Sangu	0	0	0	0	0	0	0	0	0	0	0	0	0	2,017
Daily Avg.	0	0	0	0	0	0	0	0	0	0	0	0	0	0
Semutang	416	302	388	379	281	248	288	210	153	174	119	0	2,955	719
Daily Avg.	13	11	13	13	9	8	9	7	5	6	4	0	10	
Shahbazpur	1,390	1,193	1,646	1,513	1,800	2,103	2,228	2,258	2,154	2,139	1,837	0	20,261	3,912
Daily Avg.	45	43	53	50	58	70	72	73	72	69	61	0	67	
Srikail	1,619	1,439	1,542	1,446	1,509	1,484	1,530	1,570	1,594	1,593	1,429	0	16,756	4,904
Daily Avg.	52	51	50	48	49	49	49	51	53	51	48	0	55	
Sundalpur	3	7	15	16	13	12	15	23	46	28	19	0	197	0
Daily Avg.	0	0	0	1	0	0	0	1	2	1	1	0	1	
Sylhet	837	891	1,143	1,474	1,631	1,577	1,816	1,964	2,097	2,324	2,265	0	18,019	1,298
Daily Avg.	27	32	37	49	53	53	59	63	70	75	75	0	59	
Titas	47,689	42,663	47,259	46,962	49,032	47,725	48,956	46,485	43,989	45,238	45,331	0	511,329	126,334
Daily Avg.	1,538	1,524	1,524	1,565	1,582	1,591	1,579	1,500	1,466	1,459	1,511	0	1,682	
Begumganj	0	0	0	0	0	0	0	0	27	68	58	0	152	0
Daily Avg.	0	0	0	0	0	0	0	0	1	2	2	0	1	
Rupganj	0	0	0	0	0	0	0	0	0	0	0	0	0	34
Daily Avg.	0	0	0	0	0	0	0	0	0	0	0	0	0	
Total (000'bl)	106,580	96,975	108,371	105,354	111,567	113,079	121,360	119,331	119,623	123,692	125,644	0	1,251,576	296
Daily Avg. (000'bbl)	3,438	3,463	3,496	3,512	3,599	3,769	3,915	3,849	3,987	3,990	4,188	0	4,117	1

Conditions of Field and Well upto October 2018



Well	company	well type	Discovery	production start	Drilled depth (ft)	Pressure	Pressure type	Completion Zone
Field : Bakharabad								
BKB-1	BGFCL	Vertical	1969	June,1969	9309		FWHP	J
BKB-2	BGFCL	Directional	1969	October,1981	7496	248-274	FWHP	G
BKB-3	BGFCL	Directional	1969	April,1982	9339	356-412	FWHP	G
BKB-4	BGFCL	Directional	1969	June,1982	9430			D
BKB-5	BGFCL	Directional	1969	Sept,1982	9675	1555-1646	FWHP	B
BKB-6	BGFCL	Directional	1969	March,1989	8785			J
BKB-7	BGFCL	Directional	1969	July,1989	8605		FWHP	J
BKB-8	BGFCL	Directional	1969	Sept,1989	8840	490-523	FWHP	J
BKB-9	BGFCL	Vertical	1969	August,2013	8318	1005-1097	FWHP	G
BKB-10	BGFCL	Directional	1969	June,2016	9291	1010-1102	FWHP	K
Field : Bangura								
Bangura-1	Tullow		2004			887-940	FWHP	D
Bangura-2	Tullow		2004			587-685	FWHP	D/E
Bangura-3	Tullow		2004			719-789	FWHP	D
Bangura-6	Tullow		2004			708-780	FWHP	D
Bangura-5	Tullow		2004			579-621	FWHP	D
Field : Beani Bazar								
BB-1	SGFL		1981	July,1999	13480	580-620	SIWHP	Upper
BB-2	SGFL		1981	July,1999	12048	3210-3220	FWHP	Upper
Field : Bibiyana								
BY-1	Chevron		1998			1547-2007	FWHP	BB60, BB66
BY-2	Chevron		1998			1313-1390	FWHP	BB60, BH20A, BH20E
BY-3	Chevron		1998			1363-1403	FWHP	BB70
BY-4	Chevron		1998			1330-1390	FWHP	BH10
BY-5	Chevron		1998			1254-1299	FWHP	BH20A, BH20B, BH20C, BH20D
BY-6	Chevron		1998			1250-1486	FWHP	BB70
BY-7	Chevron		1998			1454-1566	FWHP	BH10
BY-8	Chevron		1998			1270-1297	FWHP	BH20A, BH20B
BY-9	Chevron		1998			1243-1273	FWHP	BH10
BY-10	Chevron		1998			1465-1533	FWHP	BB60
BY-11	Chevron		1998			1260-1284	FWHP	BH20A, BH20B
BY-12	Chevron		1998			1259-1332	FWHP	BB70
BY-13	Chevron		1998			1300-1356	FWHP	BH20A, BH20B
BY-14	Chevron		1998			1342-1632	FWHP	BH20A, BH20B
BY-15	Chevron		1998			2189-2240	FWHP	BB60
BY-16	Chevron		1998			1381-1644	FWHP	BH10, BH20D

Conditions of Field and Well upto October 2018



Well	company	well type	Discovery	production start	Drilled depth (ft)	Pressure	Pressure type	Completion Zone
BY-17	<i>Chevron</i>		<i>1998</i>			<i>2104-2229</i>	<i>FWHP</i>	<i>BB60</i>
BY-18	<i>Chevron</i>		<i>1998</i>			<i>1904-2218</i>	<i>FWHP</i>	<i>BB60</i>
BY-19	<i>Chevron</i>		<i>1998</i>			<i>1354-1477</i>	<i>FWHP</i>	<i>BH10, BH20A</i>
BY-20	<i>Chevron</i>		<i>1998</i>			<i>1248-1262</i>	<i>FWHP</i>	<i>BH20D, BH20A, BH10</i>
BY-21	<i>Chevron</i>		<i>1998</i>			<i>1333-1348</i>	<i>FWHP</i>	<i>BH20A, BH20B, BH10</i>
BY-22	<i>Chevron</i>		<i>1998</i>			<i>1552-1586</i>	<i>FWHP</i>	<i>BB60</i>
BY-23	<i>Chevron</i>		<i>1998</i>			<i>1739-2021</i>	<i>FWHP</i>	<i>BH10, BH20A, BH20B, BH20C</i>
BY-24	<i>Chevron</i>		<i>1998</i>			<i>1337-2091</i>	<i>FWHP</i>	<i>BB60</i>
BY-25	<i>Chevron</i>		<i>1998</i>			<i>1728-1857</i>	<i>FWHP</i>	<i>BB60, BB66</i>
BY-26	<i>Chevron</i>		<i>1998</i>			<i>1877-2094</i>	<i>FWHP</i>	<i>BB60, BB64</i>
Field : Chattak								
Ch-1	SGFL		1959					
Field : Fenchuganj								
Fenchuganj-2	<i>BAPEX</i>		<i>1988</i>	<i>May, 2004</i>				
Fenchuganj-3	<i>BAPEX</i>		<i>1988</i>	<i>January, 2005</i>		<i>2004-2010</i>		<i>upper</i>
Fenchuganj-4	<i>BAPEX</i>		<i>1988</i>			<i>2037-2065</i>		
Field : Feni								
Feni-1	<i>BAPEX</i>		<i>1981</i>					
Feni-2	<i>BAPEX</i>		<i>1981</i>					
Feni-3	<i>BAPEX</i>		<i>1981</i>					
Feni-4	<i>BAPEX</i>		<i>1981</i>					
Feni-5	<i>BAPEX</i>		<i>1981</i>					
Field : Habiganj								
Hbj-1	<i>BGFCL</i>	<i>Vertical</i>	<i>1963</i>	<i>Feb, 1969</i>	<i>11500</i>		<i>FWHP</i>	<i>upper</i>
Hbj-2	<i>BGFCL</i>	<i>Vertical</i>	<i>1963</i>	<i>Feb, 1969</i>	<i>5100</i>		<i>FWHP</i>	<i>upper</i>
Hbj-3	<i>BGFCL</i>	<i>Vertical</i>	<i>1963</i>	<i>July, 1985</i>	<i>5282</i>	<i>1478-1486</i>	<i>FWHP</i>	<i>upper</i>
Hbj-4	<i>BGFCL</i>	<i>Vertical</i>	<i>1963</i>	<i>May, 1985</i>	<i>5249</i>	<i>1460-1467</i>	<i>FWHP</i>	<i>upper</i>
Hbj-5	<i>BGFCL</i>	<i>Directional</i>	<i>1963</i>	<i>Feb, 1992</i>	<i>11552</i>	<i>1440-1446</i>	<i>FWHP</i>	<i>upper</i>
Hbj-6	<i>BGFCL</i>	<i>Vertical</i>	<i>1963</i>	<i>Feb, 1992</i>	<i>5515</i>	<i>1375-1379</i>	<i>FWHP</i>	<i>upper</i>
Hbj-7	<i>BGFCL</i>	<i>Vertical</i>	<i>1963</i>	<i>April, 2000</i>	<i>10236</i>	<i>1331-1139</i>	<i>FWHP</i>	<i>upper</i>
Hbj-8	<i>BGFCL</i>	<i>Vertical</i>	<i>1963</i>	<i>May, 2000</i>	<i>5280</i>			<i>upper</i>
Hbj-9	<i>BGFCL</i>	<i>Vertical</i>	<i>1963</i>	<i>July, 1998</i>	<i>5249</i>			<i>upper</i>
Hbj-10	<i>BGFCL</i>	<i>Vertical</i>	<i>1963</i>	<i>Apr, 2000</i>	<i>5133</i>	<i>1322-1331</i>	<i>FWHP</i>	<i>upper</i>
Hbj-11	<i>BGFCL</i>	<i>Vertical</i>	<i>1963</i>	<i>january, 2008</i>	<i>10499</i>	<i>1417-1423</i>	<i>FWHP</i>	<i>upper</i>
Field : Jalalabad								
JB-1	<i>Chevron</i>		<i>1989</i>			<i>1333-1436</i>	<i>FWHP</i>	<i>BB60, BB50</i>

Conditions of Field and Well upto October 2018



Well	company	well type	Discovery	production start	Drilled depth (ft)	Pressure	Pressure type	Completion Zone
JB-2	<i>Chevron</i>		<i>1989</i>			<i>1279-1294</i>	<i>FWHP</i>	<i>BB50, BB60</i>
JB-3	<i>Chevron</i>		<i>1989</i>			<i>1332-1375</i>	<i>FWHP</i>	<i>BB50, BB60</i>
JB-4	<i>Chevron</i>		<i>1989</i>			<i>1365-1425</i>	<i>FWHP</i>	<i>BB60</i>
JB-6	<i>Chevron</i>		<i>1989</i>			<i>1354-1362</i>	<i>FWHP</i>	<i>BB60, BB50</i>
JB-7	<i>Chevron</i>		<i>1989</i>			<i>1666-1679</i>	<i>FWHP</i>	<i>BB20</i>
JB-8	<i>Chevron</i>		<i>1989</i>			<i>1362-1370</i>	<i>FWHP</i>	<i>BB50, BB60</i>
Field : Kailas Tila								
KTL-1	<i>SGFL</i>		<i>1962</i>	<i>June, 1983</i>	<i>12417</i>	<i>0</i>	<i>SIWHP</i>	
KTL-2	<i>SGFL</i>		<i>1962</i>	<i>Feb, 1995</i>		<i>2225-2230</i>	<i>FWHP</i>	
KTL-3	<i>SGFL</i>		<i>1962</i>	<i>March, 1995</i>		<i>2470-2495</i>	<i>FWHP</i>	
KTL-4	<i>SGFL</i>		<i>1962</i>	<i>March, 1997</i>		<i>2360-2410</i>	<i>FWHP</i>	
KTL-5	<i>SGFL</i>		<i>1962</i>	<i>Sep, 2006</i>		<i>0</i>	<i>SIWHP</i>	
KTL-6	<i>SGFL</i>		<i>1962</i>	<i>Aug, 2007</i>		<i>2490-2495</i>	<i>FWHP</i>	
KTL-7	<i>SGFL</i>		<i>1962</i>			<i>0</i>	<i>SIWHP</i>	
Field : Kamta								
Kamta-1	<i>BGFCL</i>	<i>Vertical</i>	<i>1981</i>	<i>july,1982</i>	<i>11857</i>			<i>N/A</i>
Field : Meghna								
M-1	<i>BGFCL</i>	<i>Vertical</i>	<i>2004</i>	<i>july,1990</i>	<i>10069</i>	<i>1400-1450</i>	<i>FWHP</i>	<i>A,E,F & G</i>
Field : Moulavi Bazar								
MV Bazar-2	<i>Chevron</i>		<i>1997</i>			<i>800-820</i>	<i>FWHP</i>	<i>BB70</i>
MV Bazar-3	<i>Chevron</i>		<i>1997</i>			<i>800-820</i>	<i>FWHP</i>	<i>BB70</i>
MV Bazar-4	<i>Chevron</i>		<i>1997</i>			<i>946-952</i>	<i>FWHP</i>	<i>BB20</i>
MV Bazar-5	<i>Chevron</i>		<i>1997</i>			<i>0</i>	<i>SIWHP</i>	<i>BB60</i>
MV Bazar-6	<i>Chevron</i>		<i>1997</i>			<i>822-890</i>	<i>FWHP</i>	<i>BB20</i>
MV Bazar-7	<i>Chevron</i>		<i>1997</i>			<i>844-901</i>	<i>FWHP/SIWHP</i>	<i>BB20</i>
MV Bazar-9	<i>Chevron</i>		<i>1997</i>			<i>0</i>	<i>SIWHP</i>	<i>BB46, BB48, BB60</i>
Field : Narshingdi								
N-1	<i>BGFCL</i>	<i>vertical</i>	<i>1990</i>	<i>october,1990</i>	<i>11320</i>	<i>1143-1197</i>	<i>FWHP</i>	<i>BL</i>
N-2	<i>BGFCL</i>	<i>vertical</i>	<i>1990</i>	<i>february,2007</i>	<i>10778</i>	<i>1015-1097</i>	<i>FWHP</i>	<i>BL</i>
Field : Rashidpur								
RP-1	<i>SGFL</i>		<i>1960</i>			<i>1290-1291</i>	<i>FWHP</i>	<i>Upper</i>
RP-2	<i>SGFL</i>		<i>1960</i>			<i>73</i>	<i>SIWHP</i>	<i>Lower</i>
RP-3	<i>SGFL</i>		<i>1960</i>			<i>1548-1568</i>	<i>FWHP</i>	<i>Lower</i>
RP-4	<i>SGFL</i>		<i>1960</i>			<i>1450-1655</i>	<i>FWHP</i>	<i>Lower</i>
RP-5	<i>SGFL</i>		<i>1960</i>			<i>2291</i>	<i>SIWHP</i>	<i>Lower</i>
RP-6	<i>SGFL</i>		<i>1960</i>			<i>870</i>	<i>SIWHP</i>	<i>A</i>

Conditions of Field and Well upto October 2018



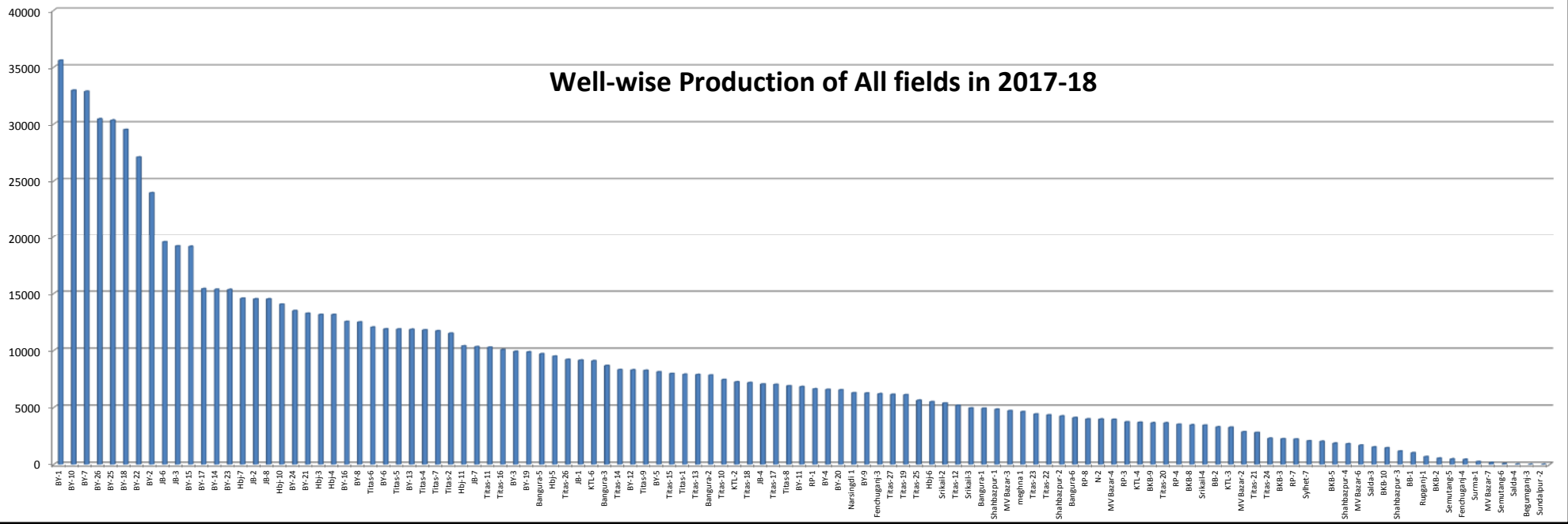
Well	company	well type	Discovery	production start	Drilled depth (ft)	Pressure	Pressure type	Completion Zone
RP-7	SGFL		1960			1308-1338	FWHP	Lower
RP-8	SGFL		1960			1600-1625	FWHP	Upper
Field : Salda Nadi								
Salda-1	BAPEX		1995					
Salda-2	BAPEX		1995					
Salda-3	BAPEX	Directional	1995	January,2012		639-640,698-700		Upper/Lower
Salda-4	BAPEX		1995					
Field : Sangu								
Sangu-1	BGFCL		1996					
Sangu-3z	BGFCL		1996					
Sangu-4	BGFCL		1996					
Sangu-5	BGFCL		1996					
Sangu-7	BGFCL		1996					
Sangu-8	BGFCL		1996					
Sangu-9	BGFCL		1996					
Sangu-10	BGFCL		1996					
Sangu-11	BGFCL		1996					
Field : Semutang								
Semutang-5	BAPEX		1967			280-508		Lower Zone
Semutang-6	BAPEX		1967			750-1302		
Field : Shahbazpur								
Shahbazpur-1	BAPEX		1995	May, 2009		2310-3543		Lower Zone
Shahbazpur-2	BAPEX		1995			3541-4133		Lower Zone
Shahbazpur-3	BAPEX		1995			4300		Upper Zone
Shahbazpur-4	BAPEX		1995			4250		Upper Zone
Field : Srikail								
Srikail-2	BAPEX		2012			990-1016		Upper & Lower D
Srikail-3	BAPEX		2012			981-1043		Upper & Lower D
Srikail-4	BAPEX		2012			1018-1068		Upper & Lower D
Field : Sundalpur								
Sundalpur -1	BAPEX		2011					
Sundalpur -2	BAPEX		2011					
Field : Sylhet								
Sylhet-3	SGFL		1955	Aug, 1958				
Sylhet-6	SGFL		1955	Aug, 1964		800-850	SIWHP	
Sylhet-7	SGFL		1955	Apr, 2005		1750-1820	FWHP	Lower Bokabil

Conditions of Field and Well upto October 2018

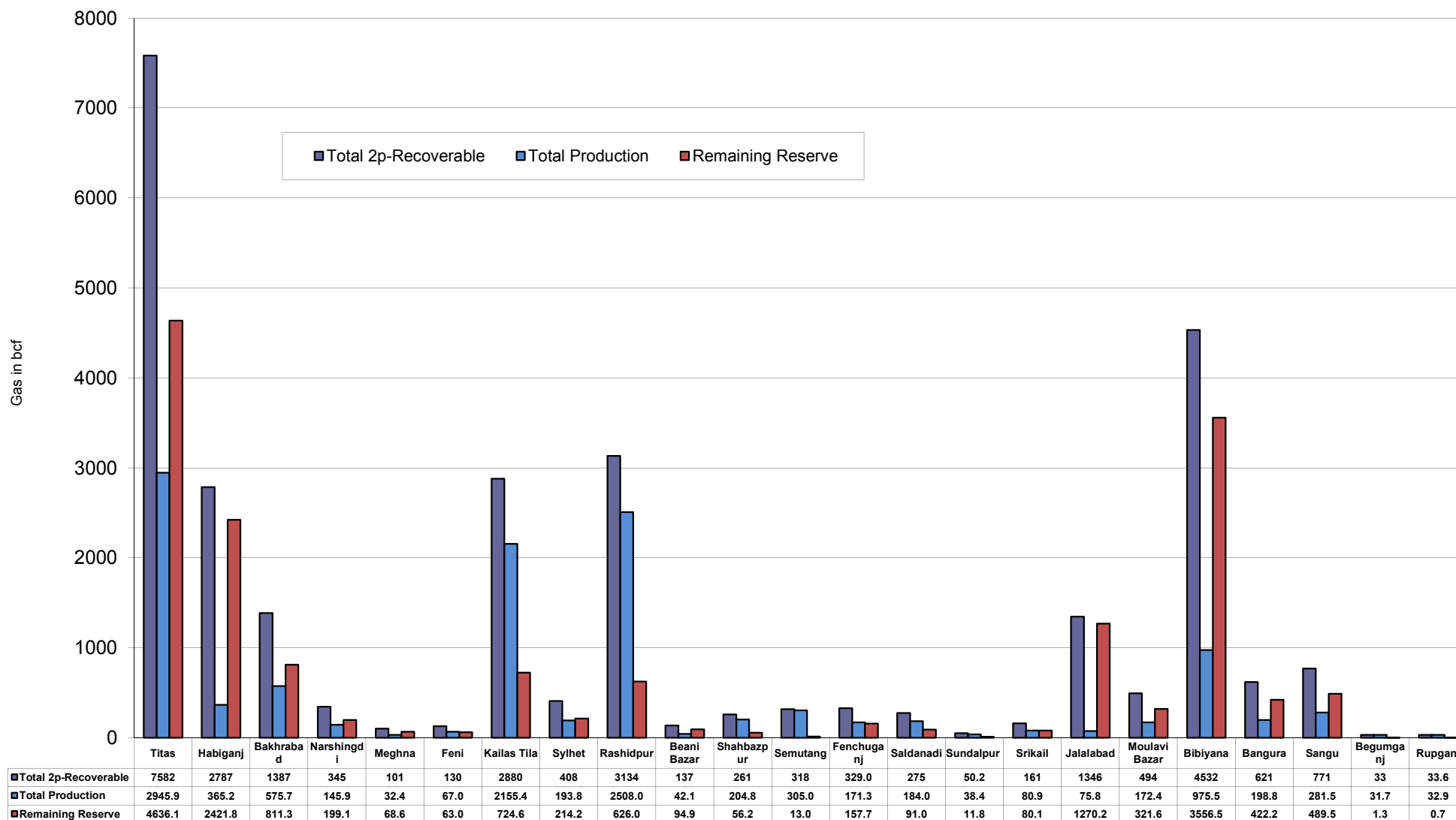


Well	company	well type	Discovery	production start	Drilled depth (ft)	Pressure	Pressure type	Completion Zone
Surma-1	SGFL		1955	June, 2010		230	SIWHP	C & D
Field : Titas								
Titas-1	BGFCL	vertical	1962	Mar,1969	12325	900-925	FWHP	A
Titas-2	BGFCL	vertical	1962	Fen,1969	10574	960-1020	FWHP	A
Titas-3	BGFCL	vertical	1962	sept,1969	9315	0	FWHP	A
Titas-4	BGFCL	vertical	1962	oct,1969	9350	1020-1070	FWHP	A
Titas-5	BGFCL	Directional	1962	jan,1981	10805	990-1035	FWHP	A
Titas-6	BGFCL	vertical	1962	Feb,1984	10072	1195-1225	FWHP	A
Titas-7	BGFCL	Directional	1962	July,1985	11006	1090-1160	FWHP	A
Titas-8	BGFCL	Directional	1962	sept,1985	11760	1000-1030	FWHP	B & C
Titas-9	BGFCL	Directional	1962	jan,1988	11893	1040-1085	FWHP	B & C
Titas-10	BGFCL	Directional	1962	may,1988	12139	1140-1180	FWHP	A
Titas-11	BGFCL	vertical	1962	Jun,1991	10462	1275-1310	FWHP	A
Titas-12	BGFCL	Directional	1962	July,2002	9873	1465-1500	FWHP	A
Titas-13	BGFCL	Directional	1962	June,2000	11487	1085-1115	FWHP	A
Titas-14	BGFCL	Directional	1962	June,2000	11004	1200-1250	FWHP	A
Titas-15	BGFCL	vertical	1962	may,2006	10446	0	FWHP	A
Titas-16	BGFCL	Directional	1962	dec,2005	11673	1205-1225	FWHP	A
Titas-17	BGFCL	vertical	1962	feb,2013	9424	1145-1175	FWHP	A
Titas-18	BGFCL	Directional	1962	august,2013	10932	1165-1190	FWHP	A
Titas-19	BGFCL	Directional	1962	may,2014	12730	1365-1415	FWHP	A
Titas-20	BGFCL	Directional	1962	oct,2013	11585	1370-1440	FWHP	A
Titas-21	BGFCL	Directional	1962	dec,2013	11631	1260-1285	FWHP	A
Titas-22	BGFCL	Directional	1962	march,2014	11926	990-1025	FWHP	A
Titas-27	BGFCL	Directional	1962	april,2014	10292	1245-1265	FWHP	A
Titas-23	BGFCL	Directional	1962	feb,2017	11988	2265-2340	FWHP	C
Titas-24	BGFCL	Directional	1962	oct,2016	12686	1120-1245	FWHP	C
Titas-25	BGFCL	vertical	1962	march,2016	11680	1300-1340	FWHP	A
Titas-26	BGFCL	Directional	1962	july,2016	12618	1840-1875	FWHP	C
Field : Begumganj								
Begumganj-3	BAPEX		1977					
Field : Rupganj								
Rupganj-1	BAPEX		2014			38-88		

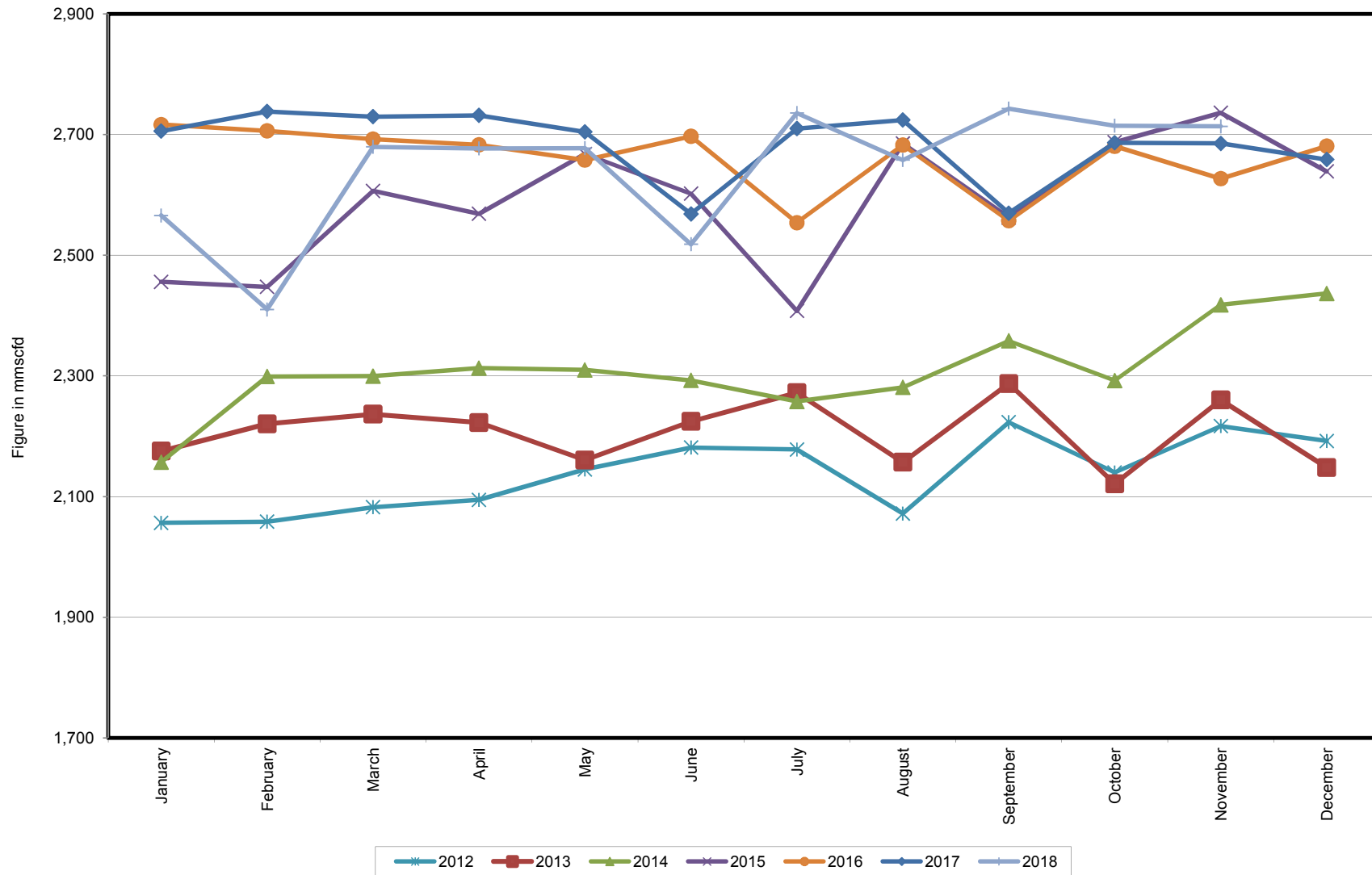
Well-wise Production of All fields in 2017-18



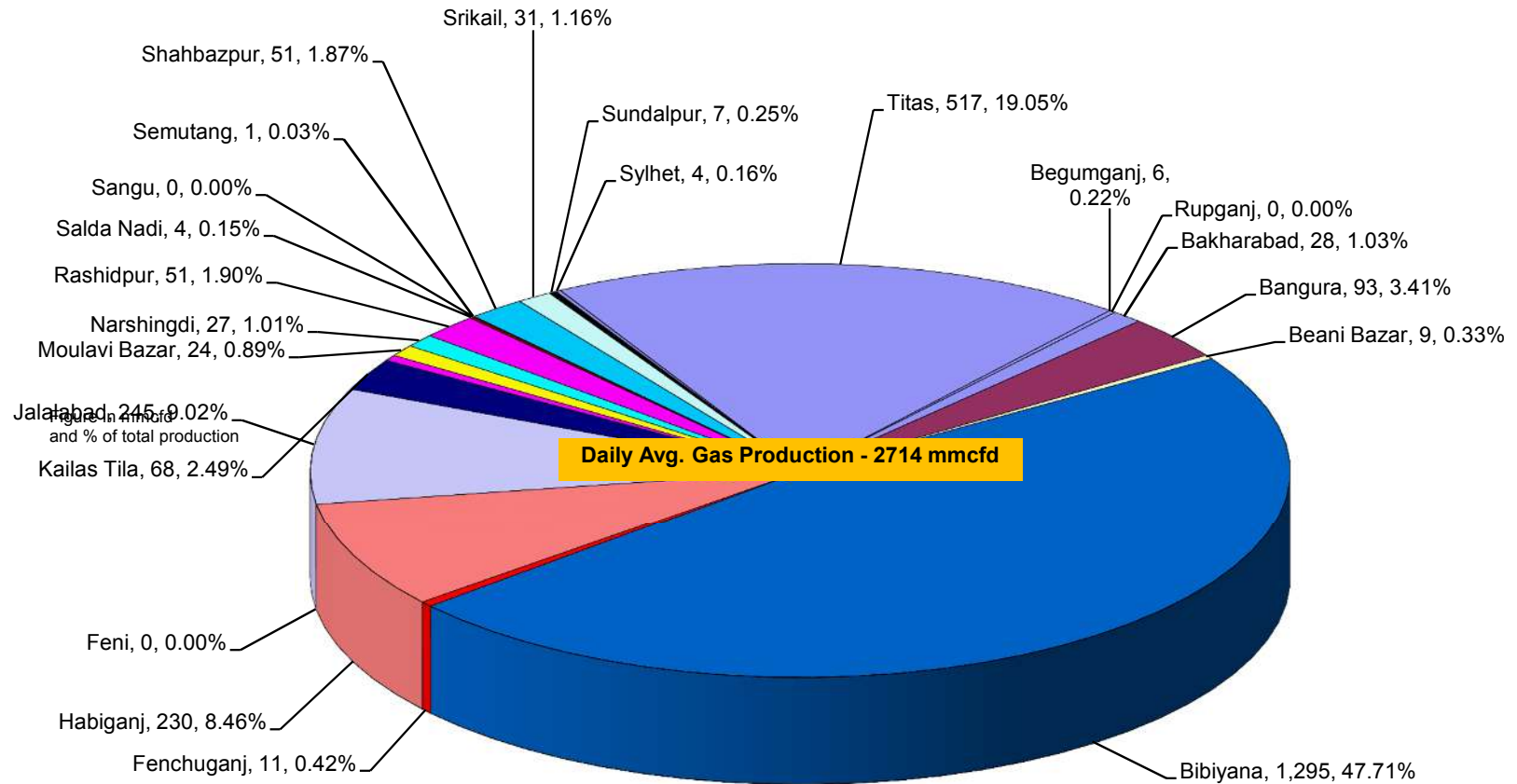
Reserve, Production and Remaining Reserve as of November 2018



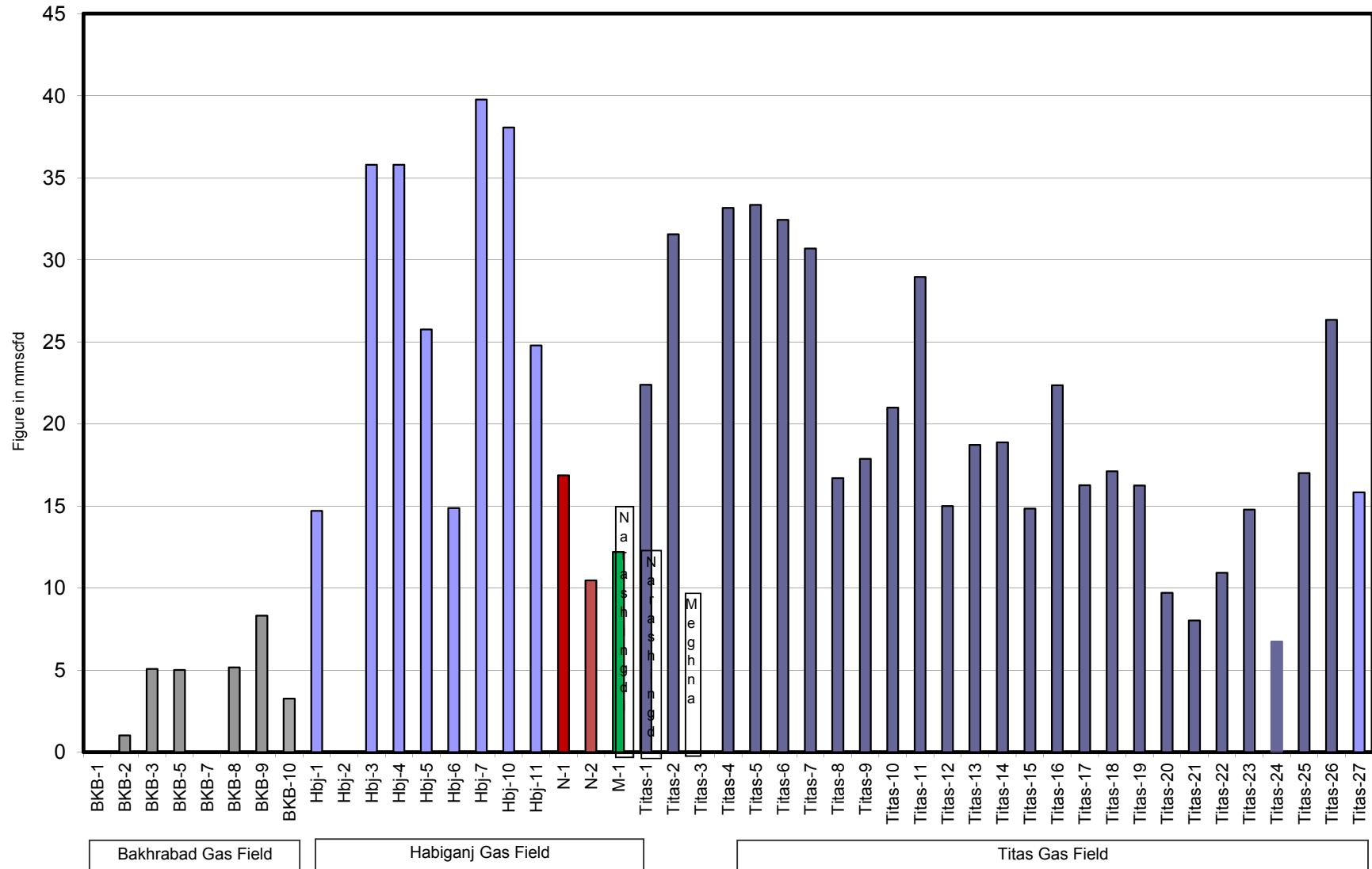
Daily Avg. Production From January 2012 to November 2018



Field Wise Daily Avg. Production November 2018

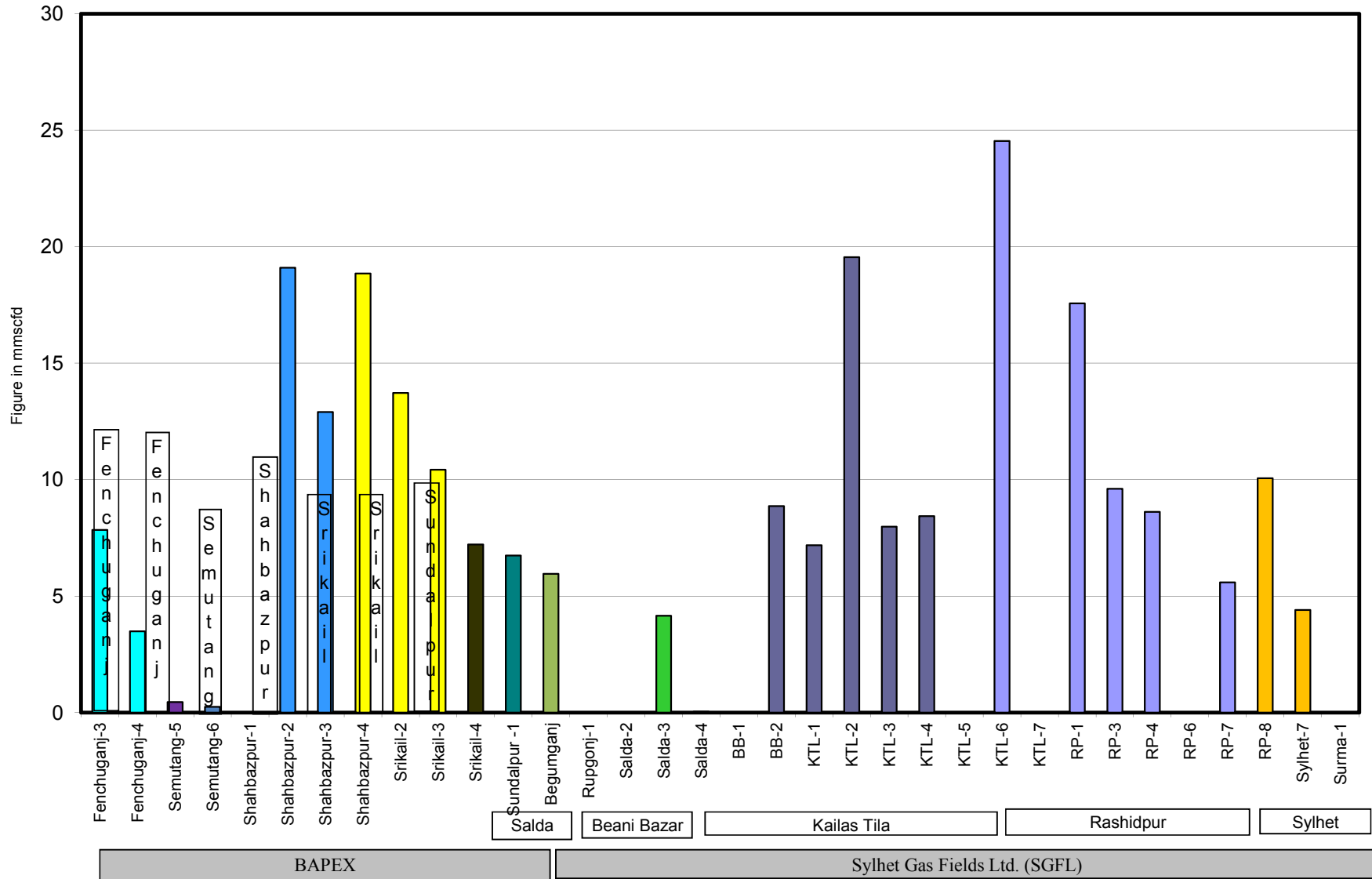


Wellwise Daily Avg. Production- BGFCL November 2018

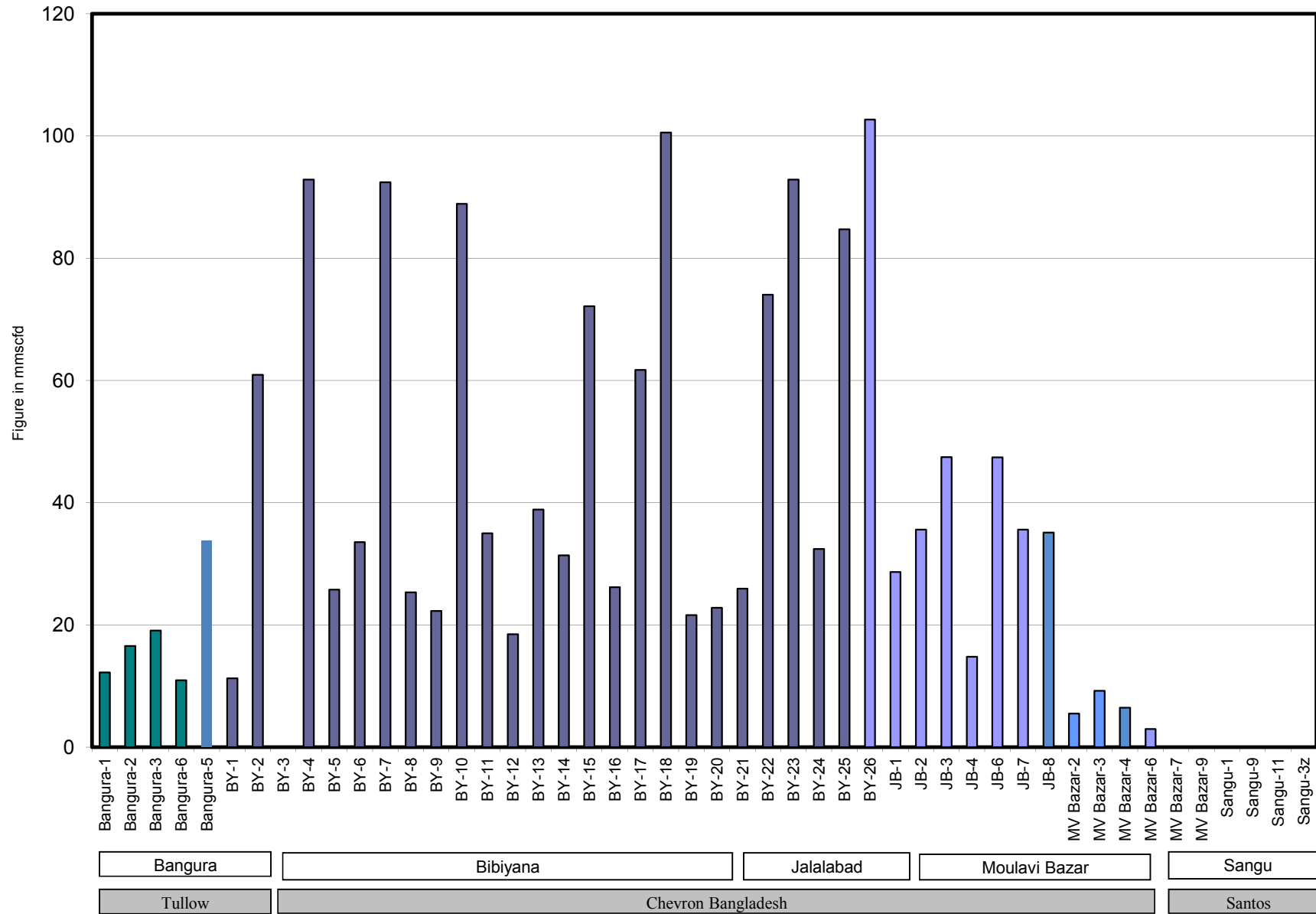


Bangladesh Gas Fields Co. Ltd. (BGFL)

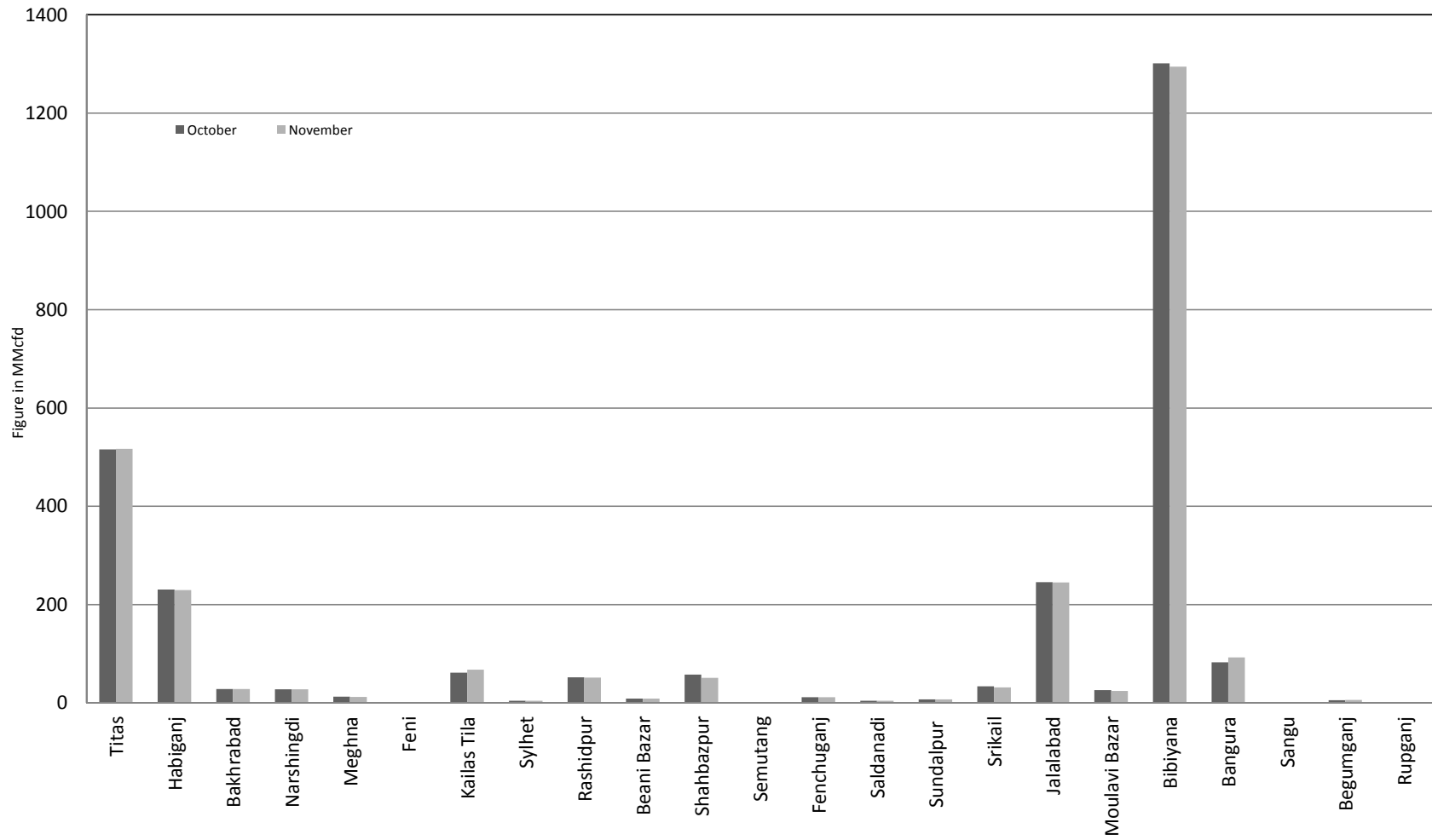
Wellwise Daily Avg. Production- Bapex and SGFL November 2018



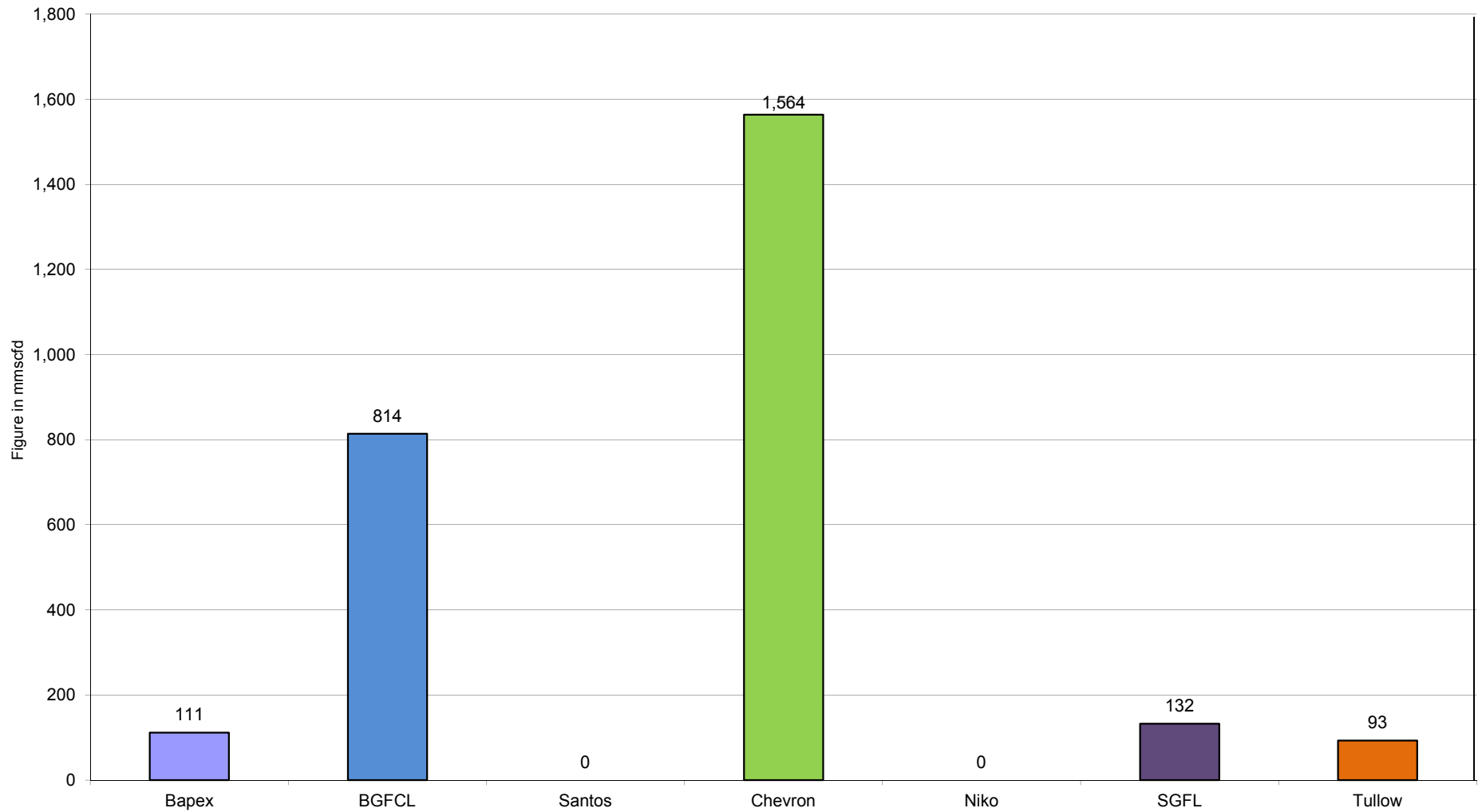
Wellwise Daily Avg. Production- IOC and JVA November 2018



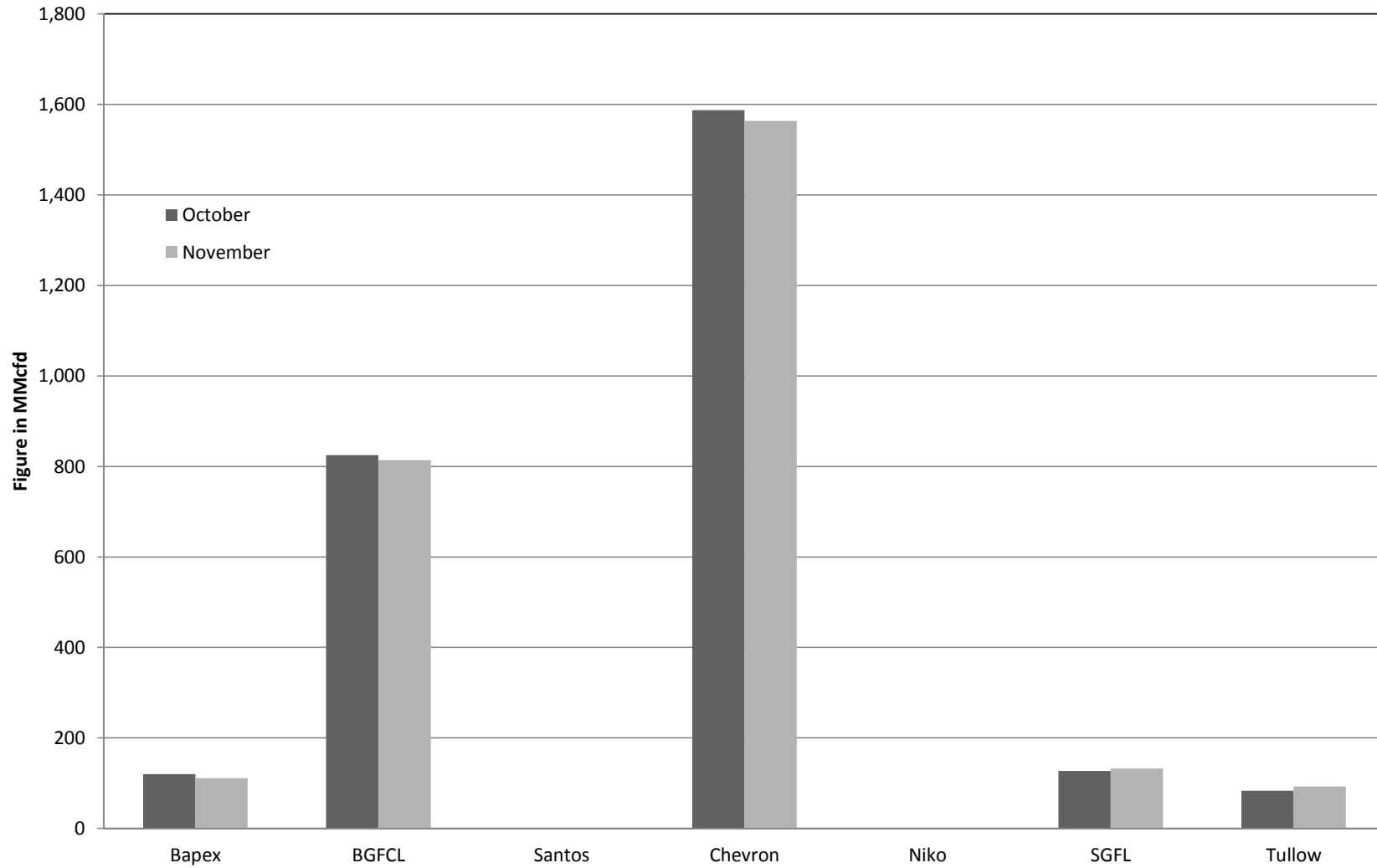
Comparison of fieldwise daily avg. Gas production between October 2018 & November 2018



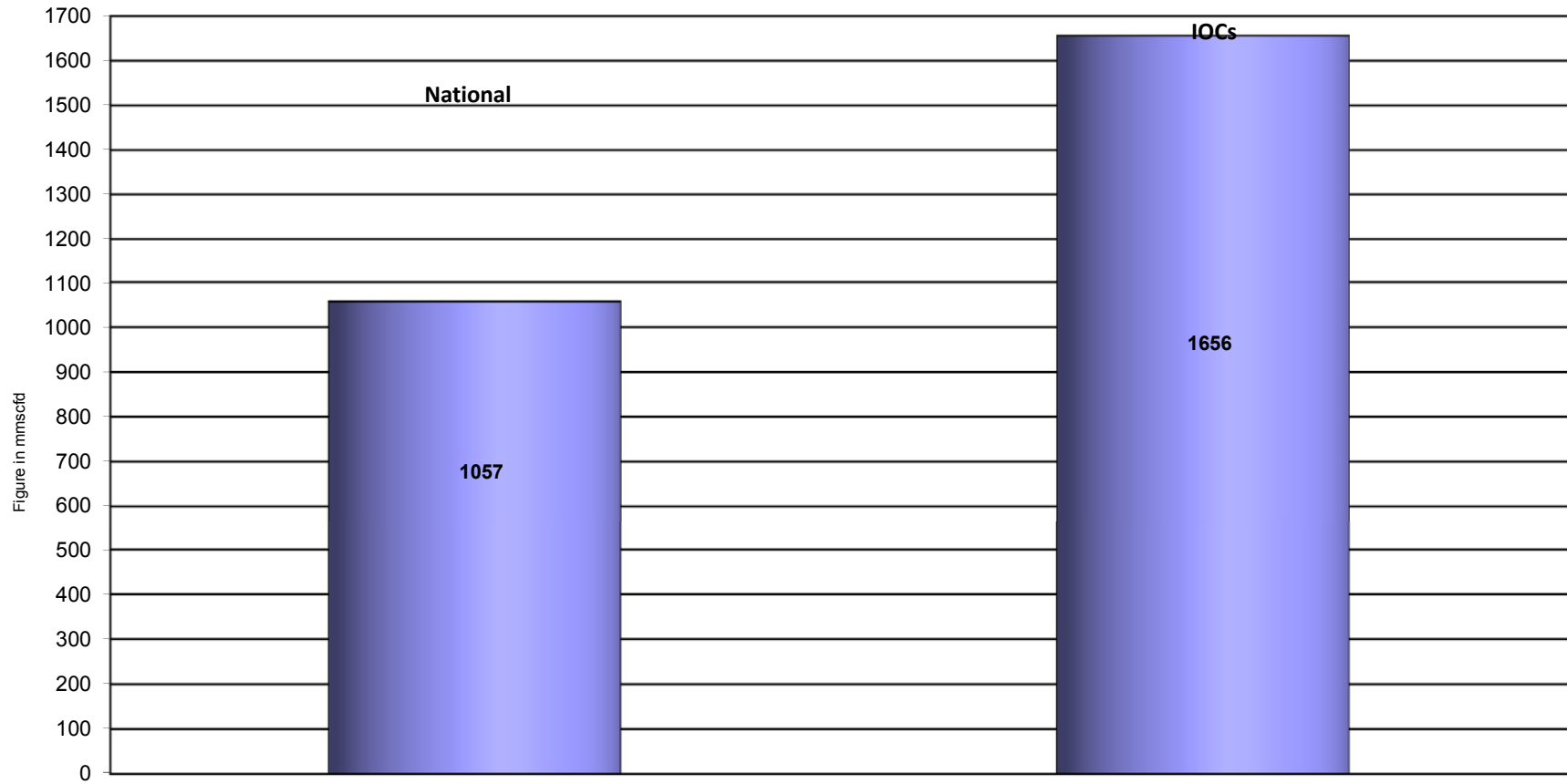
Daily Avg. Production by Operators November 2018



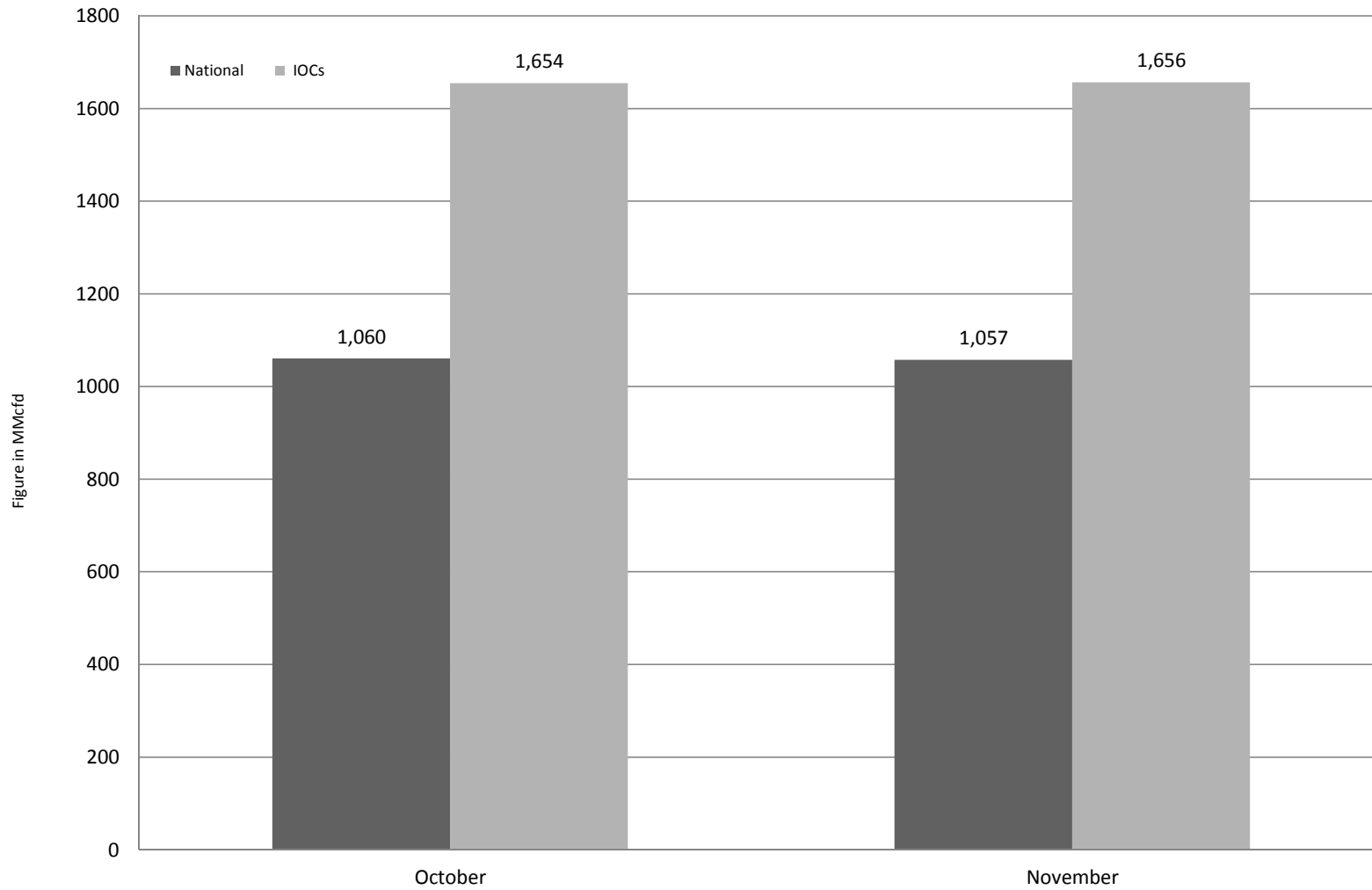
Comparison of operatorwise daily avg. Gas production between October 2018 & November 2018



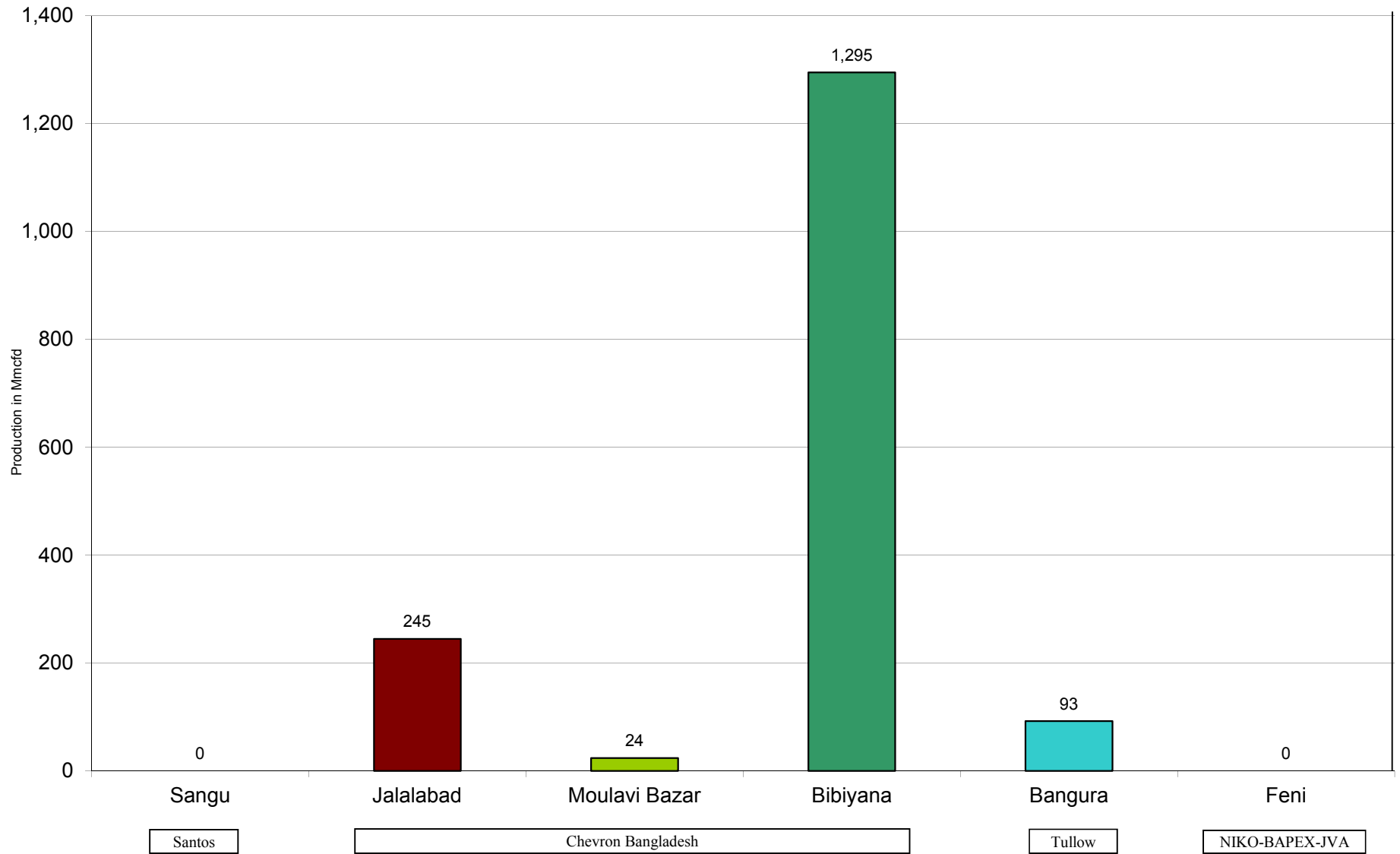
Daily Avg. Production - National Vs. IOCs November 2018



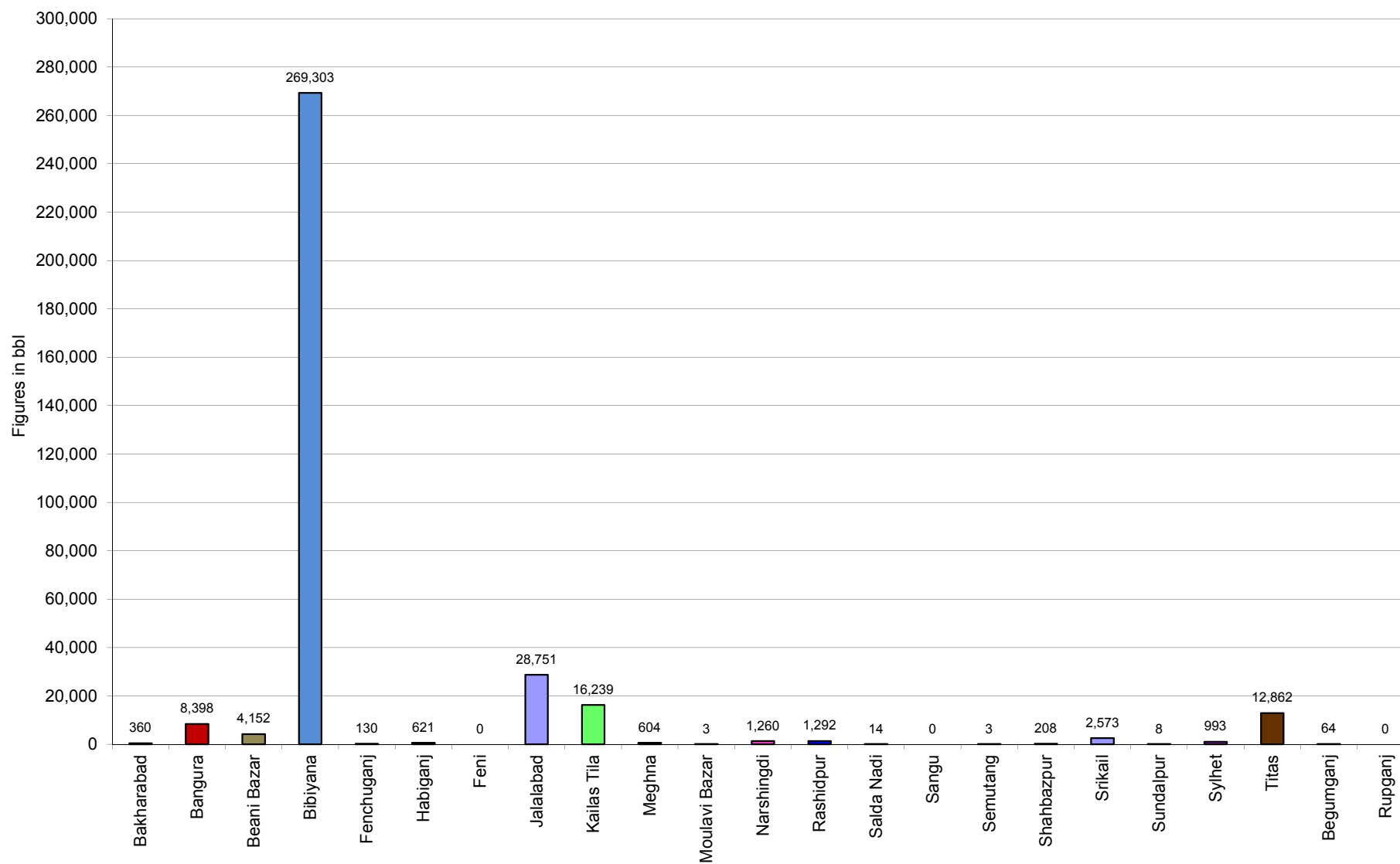
Comparison of daily avg. Gas production - National vs IOC's between October 2018 & November 2018



Daily Avg. Production - IOC and JVA November 2018



Monthly Condensate Production November 2018



Field wise Coal Reserve in Bangladesh

SI No.	Coal Basins	Proved (Mt)	Indicated (Mt)	Inferred (Mt)	Total (Mt)
1	Barapukuria	114.32	211.33	21.06+(43-64)*	346.71+(43-64)*
2	Phulbari	288	226	58	572
3	Khalashpir	-	297.57	225.92	523.49
4	Jamalganj	-	-	1053.9	1053.9
5	Dighipara	-	105	495	600
	Total	402.32	839.9	1896.88-1917.88	3139.10-3160.10

**Resources of VI Seam in second syncline are towards SW of main basin, after Wardell Armstrong*

NOTE: Reserve Figure based on Coal Sector Development Strategy (Final), HCU, PwC

Summary of Reserve and Production of Barapukuria Coal Mine

As of 30 November 2018

Coal Initially Place (Proven + Probable)	346.71 Mt	0.347 Bt
Total Reserve of Seam VI	285.41 Mt	0.285 Bt
Recoverable from Seam VI Central part(Proven + Probable)	16.54 Mt*	0.017 Bt
Coal Production in November 2018	0.08 Mt	0.000 Bt
Cumulative Production as of November 2018	10.23 Mt	0.010 Bt
Remaining Reserve	6.31 Mt	0.006 Bt

NOTE: Reserve figure based on Mines and Minerals Development Report ,HCU PwC

*Figure from BCMCL, M/S Wardell Armstrong. According to Mines and Minerals Development Report ,HCU, PwC this figure is 64.8 Mt

Barapukuria Coal Mine-MPM and P Contract (BCMCL)

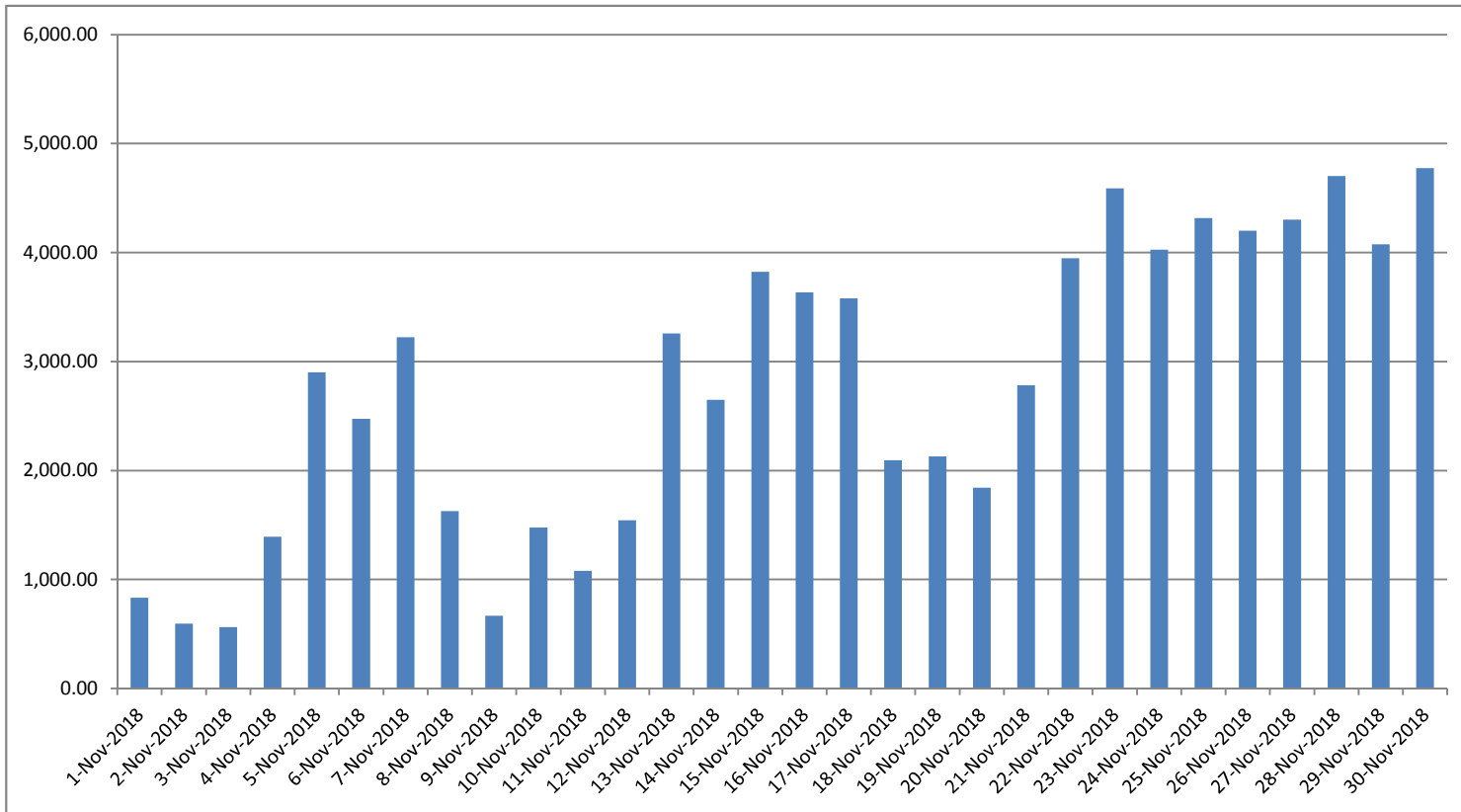
Measurement Record: Surface Belt Weigher

Measurement Period: November 2018

Day wise data	Consortium Daily Output (ton)	Consortium Cumulative Total	BCMCL Daily Output	BCMCL Cumulative Total	Remarks
1-Nov-2018	833.00	833.00	833.00	833.00	
2-Nov-2018	594.50	1,427.50	594.50	1,427.50	
3-Nov-2018	562.25	1,989.75	562.25	1,989.75	
4-Nov-2018	1,392.25	3,382.00	1,392.25	3,382.00	
5-Nov-2018	2,900.00	6,282.00	2,900.00	6,282.00	
6-Nov-2018	2,473.50	8,755.50	2,473.50	8,755.50	
7-Nov-2018	3,222.25	11,977.75	3,222.25	11,977.75	
8-Nov-2018	1,628.25	13,606.00	1,628.25	13,606.00	
9-Nov-2018	667.00	14,273.00	667.00	14,273.00	
10-Nov-2018	1,478.25	15,751.25	1,478.25	15,751.25	
11-Nov-2018	1,078.50	16,829.75	1,078.50	16,829.75	
12-Nov-2018	1,543.50	18,373.25	1,543.50	18,373.25	
13-Nov-2018	3,257.75	21,631.00	3,257.75	21,631.00	
14-Nov-2018	2,648.50	24,279.50	2,648.50	24,279.50	
15-Nov-2018	3,824.75	28,104.25	3,824.75	28,104.25	
16-Nov-2018	3,634.75	31,739.00	3,634.75	31,739.00	
17-Nov-2018	3,579.50	35,318.50	3,579.50	35,318.50	
18-Nov-2018	2,095.50	37,414.00	2,095.50	37,414.00	
19-Nov-2018	2,128.50	39,542.50	2,128.50	39,542.50	
20-Nov-2018	1,842.25	41,384.75	1,842.25	41,384.75	
21-Nov-2018	2,781.00	44,165.75	2,781.00	44,165.75	
22-Nov-2018	3,947.00	48,112.75	3,947.00	48,112.75	
23-Nov-2018	4,588.75	52,701.50	4,588.75	52,701.50	
24-Nov-2018	4,027.50	56,729.00	4,027.50	56,729.00	
25-Nov-2018	4,315.50	61,044.50	4,315.50	61,044.50	
26-Nov-2018	4,201.00	65,245.50	4,201.00	65,245.50	
27-Nov-2018	4,302.75	69,548.25	4,302.75	69,548.25	
28-Nov-2018	4,703.25	74,251.50	4,703.25	74,251.50	
29-Nov-2018	4,076.50	78,328.00	4,076.50	78,328.00	
30-Nov-2018	4,773.50	83,101.50	4,773.50	83,101.50	

less Difference in Water Content:	4523.03
Less Out of Seam dilution:	3079.96
Output (tons) measured by Belt	75,498.51
Tonnes mined in DARR	0
Net Output after removing DARR	75,498.51

Barapukuria Coal Mine Daywise Data Graph for November 2018



আসুন, যানবাহনসমূহকে অটোগ্যাসে রূপান্তর করি...

জাতীয় সম্পদ প্রাকৃতিক গ্যাস সাশ্রয় করি...

facebook

"Energy misused, cannot be excused"

আমাদের ঘরে যদি এখনো কয়েল স্টার্টার যুক্ত টিউবলাইট থেকে থাকে, আসুন আজই LED টিউবলাইট দ্বারা প্রতিস্থাপন করি।

HYDROCARBON UNIT ON FACEBOOK

“আসুন আমাদের জাতীয় সম্পদ প্রাকৃতিক গ্যাস সাশ্রয় করি”

১। **LPG** ব্যবহার করুন..

অবৈধ গ্যাস সংযোগ থেকে বিরত থাকুন

২। **CNG** নয়, অকটেন দিয়ে গাড়ি চালান...

গাড়ির ইঞ্জিনের আয়ুষ্কাল বাড়ান

চলুন আজই যানবাহনসমূহ AUTO GAS (LPG) এ রূপান্তর করি...

- * CNG এর তুলনায় LPG কনভারশনে ৫০% কম খরচ হয়
- * ৩-৫ মিনিটে ট্যাংকে ফুয়েল ভর্তি হয়, লম্বা লাইনে দাঁড়িয়ে অপেক্ষা করার প্রয়োজন পরে না
- * CNG এর তুলনায় সিলিন্ডারে জায়গা, ওজন ও প্রেশার কম দরকার
- * রক্ষণাবেক্ষণের খরচ কম
- * পেট্রলের তুলনায় AUTO GAS -এ খরচ প্রায় ৫০% কম
- * গ্যাসোলিন ও ডিজেলের তুলনায় নিঃসরণ কম

Hydrocarbon Unit

Energy & Mineral Resources Division
Ministry of Power, Energy & Mineral Resources
153, Pioneer Road
Segunbagicha, Dhaka-1000
www.hcu.org.bd