



Gas and Coal Reserve & Production

June 2024



ENERGY DATA CENTER



HYDROCARBON UNIT

Energy and Mineral Resources Division

Preface

Monthly Report on Gas and Coal Reserve & Production was prepared and published by Hydrocarbon Unit for the first time in July 2004. The present one is the issue for June 2024. In this report, Monthly Gas, Condensate, Water and Coal production of Bangladesh is reflected. Monthly import of Liquefied Natural Gas (LNG) has been included in the report as well. Moreover, Daily Average Gas Production; Field wise Daily Average Production; Well wise Daily Average Production; Comparison of Field wise Average Gas Production between present & previous month; Daily Average Production by Operator; Comparison of National and IOC Daily Average Production along with the graphical presentation have been depicted. Monthly Coal production data is also included in this report.

This report has been prepared based on the data directly collected from the Production companies of Petrobangla (BAPEX, BGFCL & SGFL) and IOC companies (Tullow & Chevron). Liquefied Natural Gas (LNG) import data is collected from RPGCL & Coal production data is collected from BCMCL.

It is expected that the report will be helpful as reference book and elements of interest for the concerned.

The report will also be available at HCU's website: www.hcu.gov.bd.

Md. Shameem Khan
Director General (Additional Secretary)
Hydrocarbon Unit

Executive Summary of June 2024

Total gas and condensate Production in June 2024 were 58.42 Bcf and 218669.32 Bbl. During the previous month i.e. May 2024, gas and condensate production were 61.79 Bcf and 240188.88 Bbl and in the same month of the previous year i.e. June 2023, total gas and condensate production were 62.34 Bcf and 243719 Bbl respectively. The National Oil Companies (NOC's) and International Oil Companies (IOC's) Produced 23.68 Bcf and 34.74 Bcf gas respectively in June 2024. During the previous month i.e. May 2023, gas production by the National Oil Companies (NOC's) and International Oil Companies (IOC's) were 24.19 Bcf and 37.59 Bcf respectively. In the month of June 2024, Bibiyana gas field Produced 29.15 Bcf gas and it ranked top among the gas producers. Average production from the field during the month of June 2024 was 971.81 MMcfd. It is noted that Bibiyana gas field Produced 31.65 Bcf in May 2024.

Bibiyana gas field Produced 163756.82 Bbl condensate and ranked top while Jalalabad ranked 2nd by producing 20130 Bbl condensate.

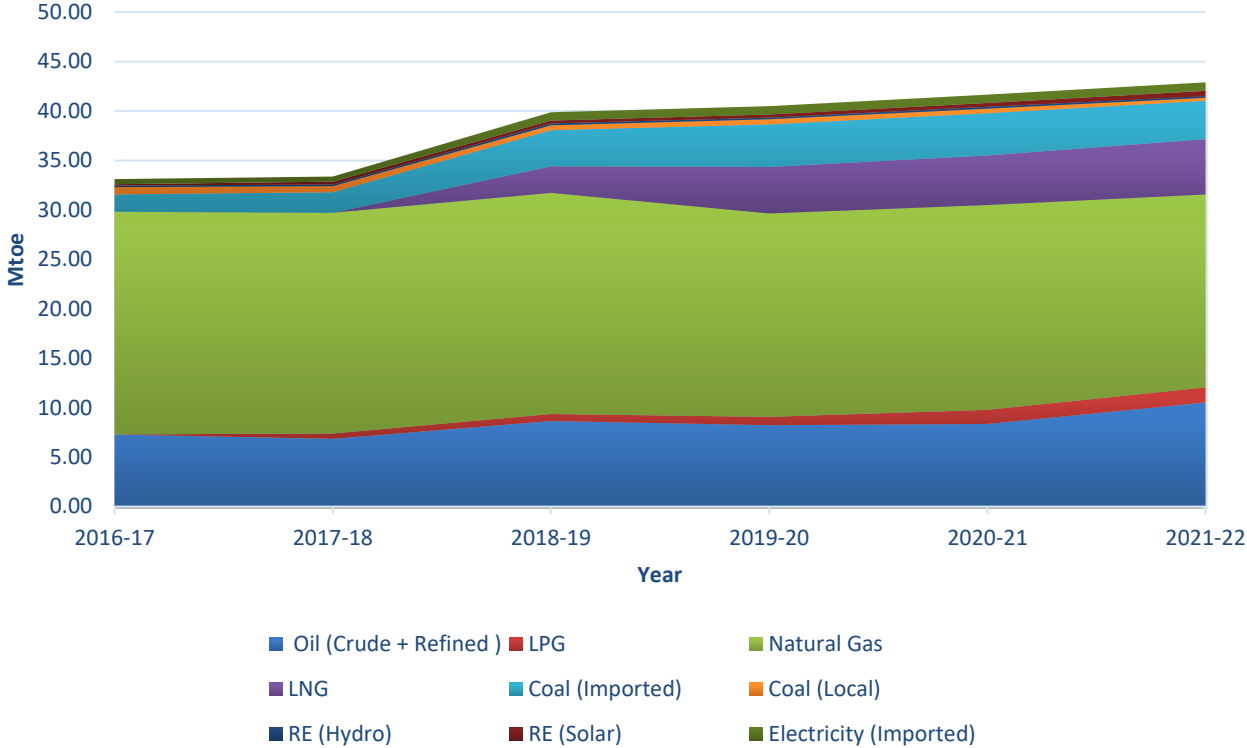
Total LNG import in June 2024 was 18.67 Bcf. As a result, Total LNG Import in this FY is 247.58 Bcf and cumulative LNG import stands on 1226.42 Bcf from August 2018.

In the month of June 2024, total coal production was 83830.12 Ton. During the previous month, i.e. May 2024 total coal production was 102943.95 Ton.

Gas Reserve & Production at a glance

Gas Initially in Place (GIIP)	:	40,092.19 Bcf
Recoverable (2P)	:	29,926.50 Bcf
Cumulative Production as of June 2024	:	21,099.36 Bcf
Remaining Reserve up to June 2024	:	8,827.14 Bcf
Gas Production in June 2024	:	58.42 Bcf
National Oil Company (NOC's) production in June 2024	:	23.68 Bcf
International Oil Company (IOC's) production in June 2024	:	34.74 Bcf
No. of National Oil Company (NOC's) in June 2024	:	3 (BGFCL, BAPEX, SGFL)
No. of International Oil Company (IOC's) in June 2024	:	2 (Chevron, Tullow)
Total gas fields of National Oil Company (NOC) in June 2024	:	21
Total gas fields of International Oil Company (IOC) in June 2024	:	5
Total gas wells of National Oil Company (NOC) in June 2024	:	115
Total gas wells of International Oil Company (IOC) in June 2024	:	60
No. of National Oil Company (NOC's) gas production well in June 2024	:	70
No. of Intl. Oil Company (IOC's) gas production well in June 2024	:	42
No. of National Oil company (NOC's) suspended well in June 2024	:	45
No. of International Oil company (IOC's) suspended well in June 2024	:	18
Total LNG Import in June 2024	:	18.67 Bcf
Total LNG Import from July 2023	:	247.58 Bcf
Cumulative LNG Import from August 2018	:	1,226.42 Bcf

Energy Transition over the Years



Reserve Estimates by Reservoir

SI No	Field	GIIP (Bcf)			Recovery Factor %	Total EUR (2P Reserve) in Bcf	
		Gas Sand	Proven +Probable	Total			EUR by sand
1	Begunganj	Zone-7	46.7	46.7	32.7	70.0%	32.7
2	Shahbazpur	I Sand	16.3	414.8	10.5	64.0%	261.2
		II Sand	57.0		36.8	64.5%	
		III Sand	241.2		147.8	61.3%	
		IV Sand	41.5		26.7	64.3%	
		V Sand	58.8		39.5	67.1%	
3	Semutang	Upper Sand	121.0	653.8	48.0	39.7%	318.0
		Middle Sand	65.8		37.0	56.2%	
		Lower Sand 1	278.0		207.0	74.5%	
		Lower Sand 2	189.0		26.0	13.8%	
4	Fenchuganj	Upper	283.7	483.3	189.6	66.8%	329.3
		Middle	75.7		50.3	66.4%	
		Lower	61.8		39.8	64.3%	
		New Gas Sand	62.0		49.6	80.0%	
5	Salda Nadi	Upper	302.7	393.1	203.8	67.3%	275.3
		Middle	22.1		25.2	113.8%	
		Lower	68.3		46.3	67.8%	
6	Srikail		230.0	230.0	161.0	70.00%	161.0
7	Sundalpur		62.2	62.2	50.2	80.70%	50.2
8	Rupganj		48.0	48.0	33.6	70.00%	33.6
BAPEX			2332.20	2332.20	1460.80		1460.80
9	Meghna	C	51.8	122.2	49.1	94.8%	101.2
		A	5.8		0.0	0.0%	
		B	1.5		0.0	0.0%	
		D	25.5		20.8	81.6%	
		E	15.5		13.2	85.2%	
		F	22.1		18.1	81.9%	
10	Narshingdi	UGS	91.2	405.2	57.7	63.3%	344.7
		LGS	314.0		287.0	91.4%	
11	Kamta	I Gas Sand	71.8	71.8	50.3	70.1%	50.3
12	Habiganj	Upper	3,756.3	3,981.1	2,629.7	70.0%	2,786.8
		Lower	224.8		157.1	69.9%	
13	Bakhrabad	B	158.1	1,824.9	110.2	69.7%	1,387.2
		D Upper	212.8		153.4	72.1%	
		D Lower	180.0		135.4	75.2%	
		G	288.0		240.0	83.3%	
		J	563.0		460.0	81.7%	
		C	34.9		24.4	69.9%	
		F	47.5		35.3	74.2%	
		K	195.7		130.3	66.6%	
		L	144.8		98.3	67.9%	
14	Titas	A Group	8,054.0	9,039	6,831.7	84.8%	7,582.2
		B and C Group	985.3		750.5	76.2%	
BGFCL			15,444.00	15,444.00	12,252.00		12,252.00
15	Sangu	10 Gas Sands	976.0	976.0	770.5	78.9%	770.5
Santos/Cairn (IOC)			976.0	976.0	770.5		770.5
16	Bibiyana	BB 60ab	3,364.6		2,927.9	87.0%	
		BB 65	595.4		518.1	87.0%	

SI No	Field	GIIP (Bcf)			Recovery Factor %	Total EUR (2P Reserve) in Bcf	
		Gas Sand	Proven +Probable	Total			EUR by sand
		BB 70	412.0	5,321.4	369.0	89.6%	4,531.7
		BH 10	182.9		123.9	67.7%	
		BH 20ab	205.1		138.9	67.7%	
		BH 20c	109.3		74.0	67.7%	
		BH 20d	47.6		32.2	67.7%	
		BH 25	193.0		169.0	87.6%	
		BH 50a	75.9		64.1	84.4%	
		BH 50b	98.0		82.1	83.8%	
		BH 60	37.5		32.5	86.7%	
17	Moulavi Bazar	BB20	35.2	630.2	19.7	56.0%	493.6
		BB50	59.0		41.6	70.5%	
		BB60	203.4		163.0	80.1%	
		BB70	253.2		206.2	81.4%	
		BB80	79.3		63.1	79.6%	
18	Jalalabad	BB20	46.1	1,346.1	157.1	73.3%	1,127.8
		BB50	371.1		33.8	84.2%	
		BB60	868.7		312.3	84.2%	
		BB70	60.1		731.1	84.2%	
Chevron (IOC)			11,593.00	11,593.00	7612.70		7612.70
19	Feni	UGS	52.6	185.2	36.8	70.0%	129.6
		LGS	132.6		92.8	70.0%	
Niko (IOC)			185.2	185.2	130.00		130.00
20	Kailas Tila	UGS	1,659.6	3,462.8	1,361.2	82.0%	2,880.2
		MGS	605.6		509.4	84.1%	
		LGS	1,046.0		883.0	84.4%	
		A Sand	46.2		38.6	83.6%	
		HRZ Sand	105.2		88.1	83.5%	
21	Sylhet	Tipan	40.0	580.1	28.2	70.5%	408.3
		Upper Bhuban	13.2		1.5	11.7%	
		Upper Bokabil	325.2		230.3	70.8%	
		Mid Bokabil	78.5		63.2	80.5%	
		Lower Bokabil	123.2		85.0	69.0%	
22	Rashidpur	UGS	561.5	3,887.2	396.4	70.6%	3,140.0
		MGS	2,185.1		1,767.1	80.9%	
		LGS	1,140.7		970.5	85.1%	
23	Chattak	Sand 1 and 2	272.9	677.2	191.0	70.0%	474.0
		Sand 3 and 4	201.4		141.0	70.0%	
		Sand 5 and 6	168.6		118.0	70.0%	
		Sand 7 and 8	34.3		24.0	70.0%	
24	Beani Bazar	Upper	172.8	224.5	105.4	61.0%	136.6
		Lower	51.7		31.2	60.4%	
SGFL			8,832.00	8,832.00	7,033.00		7,033.00
25	Bangura	A	24.7	730.2	19.4	78.3%	621.4
		B	18.3		14.8	80.7%	
		C	24.9		19.1	76.7%	
		D	655.0		562.0	85.8%	
		E	7.20		6.1	84.7%	
Tullow (IOC)			730.20	730.20	621.40		621.40
26	Katubdia	1 Gas Sand	65.0	65.0	45.5	70.0%	45.5
Total			40,092.20	40,092.20	29,926.50		29,926.50

Table of Contents

Gas Report	Page No.
Summary	1
summary of Reserve and Production	2
Production comparison between May 2024 & June 2024	3
Production per well & production, reserve ratio	4
Monthly Production by Fields & Wells up to June 2024	5-12
Monthly Condensate Production by Fields up to June 2024	13-14
Monthly Water Production by Fields from June 2024	15-16
Conditions of Field and Well up to June 2024	17-21
Chart	
Well-wise Production of All fields in 2022-23	22
Reserve, Production and Remaining Reserve as of June 2024	23
Daily Average Gas Production from January 2017 to June 2024	24
Field wise Daily Average Production as of June 2024	25
Well wise Daily Average Production-BGFCL as of June 2024	26
Well wise Daily Average Production-BAPEX and SGFL, June 2024	27
Well wise Daily Average Production-IOC and JVA, June 2024	28
Field wise Avg Gas Production between May 2024 & June 2024	29
Daily Average Production by Operator, June 2024	30
Operator wise daily Avg Production between May 2024 & June 2024	31
Daily Average Production – National vs IOC's, June 2024	32
Daily Avg Gas Production- National vs IOC's between May 2024 & June 2024	33
Daily Average Production IOC's and JVA, June 2024	34
Monthly Condensate Production, June 2024	35
Coal Report	
Summary	36-37
Barapukuria Coal Mine-MPM and P Contract (BCMCL)	38
Barapukuria Coal Mine Day wise Data Graph for June 2024	39

Summary of Reserve, Production & Import As of June 2024

Gas Initially Place (Proven + Probable)	40,092.19 Bcf	40.09 Tcf
Recoverable (Proven + Probable)	29,926.50 Bcf	29.93 Tcf
Gas Production in June 2024	58.42 Bcf	0.06 Tcf
Cumulative Gas Production as of June 2024	21,099.36 Bcf	21.10 Tcf
Remaining Reserve	8,827.14 Bcf	8.83 Tcf

NOTE: Reserve figure based on "Updated Report on Bangladesh Gas Reserve Estimation 2010", prepared by Gustavson Associates LLC, USA

Total LNG Import in June 2024	29.36 Bcf	0.03 Tcf
Total LNG Import in this FY	228.91 Bcf	0.23 Tcf
Cumulative LNG Import from August 2018	1,207.75 Bcf	1.21 Tcf

Summary of Reserve and Production

(As of June 2024)

Gas Bcf



HYDROCARBON UNIT

Energy & Mineral Resources Division

Sl No.	Field	2P	GIIP	2P Reserve	Gas Prod. In June'24	Cum. Gas Production	Remaining Reserve	Cum. Condensate Production
1	Begumganj		47.0	33.0	0.23	15.6	17.4	4
2	Shahbazpur		415.0	261.0	2.10	170.1	90.9	20
3	Semutang		654.0	318.0	0.03	14.7	303.3	5
4	Fenchuganj		483.0	329.0	0.27	177.2	151.8	123
5	Salda Nadi		393.0	275.0	0.08	99.0	176.0	60
6	Srikail*		230.0	161.0	0.78	150.5	10.5	376
7	Sundalpur *		62.2	50.2	0.03	26.0	24.2	1
8	Rupganj		48.0	33.6	0.00	0.7	32.9	1
Bapex			2,332.2	1,460.8	3.53	653.7	807.1	591
9	Meghna		122.0	101.0	0.12	81.7	19.3	133
10	Narshingdi		405.0	345.0	0.68	252.2	92.8	492
11	Kamta		72.0	50.0	0.00	21.1	28.9	4
12	Habiganj		3,981.0	2,787.0	3.48	2,752.2	34.8	152
13	Bakhrabad		1,825.0	1,387.0	0.90	883.4	503.6	1,096
14	Titas		9,039.0	7,582.0	11.42	5,465.5	2,116.5	5,895
BGFCL			15,444.0	12,252.0	16.61	9,456.1	2,795.9	7,773
15	Sangu		976.0	771.0	0.00	489.5	281.5	37
Santos/Cairn			976.0	771.0	0.00	489.5	281.5	37
16	Bibiyana**		8,383.0	5,755.4	29.15	5,975.2	0.0	33,945
17	Moulavi Bazar**		494.0	428.0	0.49	353.7	74.3	122
18	Jalalabad**		2,716.0	1,429.3	3.91	1,655.0	0.0	11,943
Chevron			11,593.0	7,612.7	33.55	7,983.8	-371.1	46,011
19	Feni		185.0	130.0	0.00	63.0	67.0	110
Niko			185.0	130.0	0.00	63.0	67.0	110
20	Kailas Tila		3,463.0	2,880.0	0.85	806.4	2,073.6	8,619
21	Sylhet		580.0	408.0	0.16	223.9	184.1	857
22	Rashidpur		3,887.0	3,134.0	2.07	720.8	2,413.2	858
23	Chattak		677.0	474.0	0.00	25.8	448.2	4
24	Beani Bazar		225.0	137.0	0.45	115.0	22.0	1,871
SGFL			8,832.0	7,033.0	3.54	1,892.0	5,141.0	12,208
25	Bangura		730.0	621.0	1.19	561.2	59.8	1,460
Tullow			730.0	621.0	1.19	561.2	59.8	1,460
26	Kutubdia		65.0	46.0	0.00	0.0	46.0	0
Total			40,092.2	29,926.5	58.42	21,099.4	8,827.1	68,190

* Preliminary reserve estimated by BAPEX

** 2P reserve estimation by Petrobangla

Production comparison between May'24 & June'24



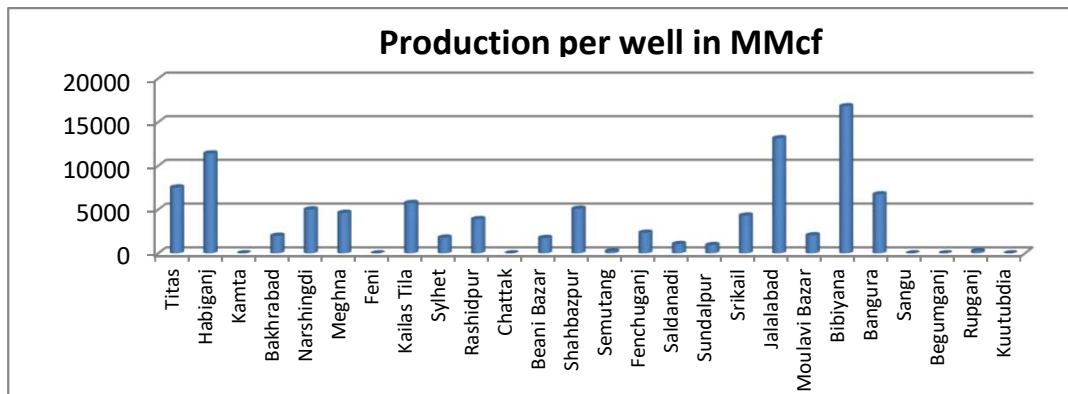
Sl No.	Field	Gas Prod. (MMcf) in May'24	Daily Avg. (MMcfd) in May'24	Gas Prod. (MMcf) in June'24	Daily Avg. (MMcfd) in June'24
1	Begumganj	242	8	227	8
2	Shahbazpur	2110	68	2103	70
3	Semutang	34	1	32	1
4	Fenchuganj	286	9	272	9
5	Salda Nadi	96	3	85	3
6	Srikail	716	23	778	26
7	Sundalpur	74	2	33	1
8	Rupganj	0	0	0	0
Bapex		3557	115	3529	118
9	Meghna	122	4	121	4
10	Narshingdi	739	24	684	23
11	Kamta	0	0	0	0
12	Habiganj	3598	116	3482	116
13	Bakhrabad	940	30	899	30
14	Titas	11604	374	11423	381
BGFCL		17004	549	16611	554
15	Sangu	0	0	0	0
Santos/Cairn		0	0	0	0
16	Bibiyana	31060	1002	29154	972
17	Moulavi Bazar	516	17	488	16
18	Jalalabad	4718	152	3909	130
Chevron		36294	1171	33551	1118
19	Feni	0	0	0	0
Niko		0	0	0	0
20	Kailas Tila	889	29	853	28
21	Sylhet	168	5	159	5
22	Rashidpur	2107	68	2074	69
23	Chattak	0	0	0	0
24	Beani Bazar	469	15	451	15
SGFL		3632	117	3536	118
25	Bangura	1298	42	1192	40
Tullow		1298	42	1192	40
26	Kutubdia	0	0	0	0
Total		61786	1993	58419	1947

Production per well & production reserve ratio



HYDROCARBON UNIT
Energy & Mineral Resources Division

	No of production well	Total 2p- Recoverable	2022-23 production	production per well mmcf	production reserve ratio
Titas	26	7582	143.51	5519.62	0.019
Habiganj	8	2787	57.2	7150.00	0.021
Kamta	0	50	0	0.00	0.000
Bakhrabad	7	1387	12.63	1804.29	0.009
Narshingdi	2	345	9.9	4950.00	0.029
Meghna	1	101	2.63	2630.00	0.026
Feni	0	130	0	0.00	0.000
Kailas Tila	4	2880	11.31	2827.50	0.004
Sylhet	1	408	2.23	2230.00	0.005
Rashidpur	5	3134	16.12	3224.00	0.005
Chattak	0	474	0	0.00	0.000
Beani Bazar	1	137	2.7	2700.00	0.020
Shahbazpur	4	261	22.81	5702.50	0.087
Semutang	2	318	0.28	140.00	0.001
Fenchuganj	2	329	5.09	2545.00	0.015
Saldanadi	2	275	1.13	565.00	0.004
Sundalpur	1	50.2	2.78	2780.00	0.055
Srikail	3	161	14.78	4926.67	0.092
Jalalabad	7	1429.3	68.77	9824.29	0.048
Moulavi Bazar	4	428	5.09	1272.50	0.012
Bibiyana	26	5755.4	439.28	16895.38	0.076
Bangura	5	621	20.69	4138.00	0.033
Sangu	0	771	0	0.00	0.000
Begumganj	1	33	3.07	0.00	0.093
Rupganj	0	33.6	0	0.00	0.000
Kuutubdia	0	46	0	0.00	0.000
Total	112	29926.5	842	7517.86	0.028



Monthly Production by Field and Well upto June 2024



HYDROCARBON UNIT
Energy & Mineral Resources Division

Figures in mmscf

Well	Jan	Feb	Mar	Apr	May	Jun	Jul	Aug	Sep	Oct	Nov	Dec	Total	Cumulative	2023	2022	2021
Field : Bakharabad																	
BKB-1	365	349	375	364	374	361							2,189	165,600	4,882	4,909	4,265
BKB-2	0	0	0	0	0	0							0	87,012	0	0	0
BKB-3	128	115	120	112	113	106							694	170,150	1,558	1,658	1,774
BKB-4	0	0	0	0	0	0							0	55,872	0	0	0
BKB-5	187	177	189	183	188	181							1,106	68,417	1,915	1,683	1,443
BKB-6	0	0	0	0	0	0							0	50,069	0	0	0
BKB-7	0	0	0	0	0	0							0	107,750	0	0	0
BKB-8	125	113	114	106	105	97							660	139,496	1,647	2,576	2,818
BKB-9	115	107	120	121	126	122							710	30,977	1,384	1,351	1,655
BKB-10	42	38	38	32	34	32							216	8,026	545	673	811
Field Total:	963	899	956	917	940	899	0	0	0	0	0	0	5,574	883,369	11,930	12,850	12,767
Daily Avg.(mmscfd)	31	31	31	31	30	30	0	0	0	0	0	0	31		33	35	35
Field : Bangura																	
Bangura-1	214	199	209	141	194	174							1,131	107,969	2,871	3,183	3,752
Bangura-2	280	258	272	231	285	263							1,588	102,246	3,402	3,671	4,395
Bangura-3	356	332	348	204	342	316							1,898	124,103	4,452	4,885	4,988
Bangura-6	126	118	124	78	129	119							695	23,444	1,823	2,349	2,413
Bangura-5	324	300	316	292	348	320							1,900	203,462	3,965	3,243	11,513
Field Total:	1,301	1,206	1,269	946	1,298	1,192	0	0	0	0	0	0	7,212	561,223	16,512	17,331	27,062
Daily Avg.(mmscfd)	42	42	41	32	42	40	0	0	0	0	0	0	40		45	47	74
Field : Beani Bazar																	
BB-1	300	280	302	295	306	294							1,777	40,526	3,070	198	0
BB-2	166	154	164	158	163	157							962	74,496	2,309	2,605	2,809
Field Total:	466	434	467	453	469	451	0	0	0	0	0	0	2,740	115,022	5,379	2,802	2,809
Daily Avg.(mmscfd)	15	15	15	15	15	15	0	0	0	0	0	0	15		15	8	8
Field : Bibiyana																	
BY-1	1,174	1,090	1,160	946	1,108	999							6,478	483,168	14,027	17,288	21,751
BY-2	824	761	804	679	793	653							4,514	338,246	10,203	8,971	9,922
BY-3	1,026	968	977	876	1,012	913							5,773	303,061	12,061	14,527	16,543
BY-4	1,076	960	974	895	994	908							5,807	279,628	13,445	14,165	18,221
BY-5	562	530	551	452	531	469							3,094	212,811	7,297	9,080	9,764
BY-6	884	864	849	681	814	736							4,829	280,834	9,991	13,107	14,852
BY-7	1,067	999	1,064	895	1,012	906							5,943	344,140	12,604	14,668	17,887
BY-8	1,481	1,385	1,488	1,195	1,449	1,433							8,430	216,475	18,060	17,706	19,722
BY-9	1,323	1,235	1,329	1,049	1,293	1,270							7,499	198,329	15,948	18,148	19,492

Monthly Production by Field and Well upto June 2024



HYDROCARBON UNIT
Energy & Mineral Resources Division

Figures in mmscf

Well	Jan	Feb	Mar	Apr	May	Jun	Jul	Aug	Sep	Oct	Nov	Dec	Total	Cumulative	2023	2022	2021
BY-10	1,135	1,062	1,142	900	1,121	1,093							6,453	430,038	13,789	16,290	18,834
BY-11	1,386	1,299	1,397	1092	1,334	1,348							7,857	214,552	16,605	19,303	22,649
BY-12	1,301	1,212	1,302	1032	1,251	1,247							7,346	224,798	15,278	17,485	19,912
BY-13	1,945	1,796	1,840	1576	1,910	1,662							10,729	190,666	26,684	24,524	23,092
BY-14	1,165	1,188	1,267	1015	1,230	1,101							6,966	159,291	14,500	17,387	11,632
BY-15	773	722	775	644	745	626							4,285	176,716	9,348	9,144	14,666
BY-16	1,773	1,622	1,735	1352	1,662	1,483							9,627	157,933	21,688	20,624	22,128
BY-17	864	812	925	797	929	890							5,218	154,447	10,766	12,196	12,683
BY-18	1,286	1,190	1,269	1006	1,230	1,193							7,174	236,968	15,452	18,222	22,024
BY-19	1,123	1,034	1,093	723	992	964							5,929	143,733	15,499	18,680	20,455
BY-20	994	956	993	839	1,044	1,014							5,841	129,942	11,256	11,274	19,054
BY-21	1,967	1,828	1,944	1512	1,866	1,797							10,914	145,504	24,291	24,533	21,327
BY-22	992	931	990	783	952	918							5,566	189,089	11,483	12,780	15,195
BY-23	1,290	1,189	1,263	1034	1,253	1,198							7,227	161,322	16,319	17,633	20,712
BY-24	742	687	727	603	710	676							4,145	109,720	9,470	10,802	6,566
BY-25	1,930	1,772	1,899	1475	1,806	1,719							10,600	235,496	24,097	26,295	19,902
BY-26	2,131	1,965	2,088	1653	2,020	1,937							11,793	258,329	26,404	25,544	22,847
Field Total:	32217	30056	31846	25702	31060	29154	0	0	0	0	0	0	180,035	5,975,235	396,566	430,374	461,830
Daily Avg.(mmscfd)	1039	1,036	1027	857	1002	972	0	0	0	0	0	0	989		1,086	1,179	1,265
Field : Chattak																	
Ch-1	Production Suspended													25,834			
Field Total:	0													25,834			
Daily Avg.(mmscfd)	0													0			
Field : Fenchuganj																	
Fenchuganj-2	0						0						0				
Fenchuganj-3	113	100	92	60	64	63							493	99,511	1,496	2,431	1,029
Fenchuganj-4	242	225	235	218	222	209							1,352	39,506	2,897	3,191	2,486
Field Total:	355	326	327	278	286	272	0	0	0	0	0	0	1,844	177,186	4,392	5,622	3,515
Daily Avg.(mmscfd)	11	11	11	9	9	9	0	0	0	0	0	0	10		12	15	10
Field : Feni																	
Feni-1	Production Suspended								0	0	0	34,214					
Feni-2	Production Suspended								0	0	0	6,119					
Feni-3	Production Suspended								0	0	0	2,176					

Monthly Production by Field and Well upto June 2024



HYDROCARBON UNIT
Energy & Mineral Resources Division

Figures in mmscf

Well	Jan	Feb	Mar	Apr	May	Jun	Jul	Aug	Sep	Oct	Nov	Dec	Total	Cumulative	2023	2022	2021
Feni-4	Production Suspended								0	0				14,386			
Feni-5	Production Suspended								0	0				6,127			
Field Total:														63,023			
Daily Avg.(mmscfd)																	
Field :	Habiganj																
Hbj-1	0	0	0	0	0	0	0	0				0	287,251	0	92	1,276	
Hbj-2	0	0	0	0	0	0	0	0				0	275,704	0	0	0	
Hbj-3	589	553	541	511	528	511				3,233	425,221	7,030	8,119	8,784			
Hbj-4	589	553	541	511	528	511				3,233	419,679	7,030	8,119	8,784			
Hbj-5	279	262	411	421	435	421				2,228	339,930	5,977	8,073	8,381			
Hbj-6	186	175	135	120	124	120				860	188,269	3,921	5,165	5,461			
Hbj-7	1,207	1,129	1,207	1169	1209	1,170				7,090	330,724	14,225	14,215	14,133			
Hbj-8	0	0	0	0	0	0				0	11,023	0	0	0			
Hbj-9	0	0	0	0	0	0				0	52,652	0	0	0			
Hbj-10	587	550	587.9	570	589	570				3,454	299,959	7,077	7,250	8,660			
Hbj-11	187	174	186	180	186	180				1,093	121,802	3,067	3,430	4,890			
Field Total:	3,624	3,395	3,607	3,484	3,598	3,482	0	0	0	0	0	0	21,190	2,752,212	48,326	54,462	60,368
Daily Avg.(mmscfd)	117	117	116	116	116	116	0	0	0	0	0	0	116		132	149	165
Field :	Jalalabad																
JB-1	706	661	686	652	682	551				3,938	294,898	8,875	9,072	8,050			
JB-2	886	828	869	816	857	807				5,063	341,676	11,295	11,539	10,135			
JB-3	1,171	1,100	1,148	1077	1,138	972				6,607	422,298	14,817	15,205	13,420			
JB-4	1	0	0	1	0	0				2	303,152	8	4,006	7,176			
JB-6	1,216	1,165	1,236	1093	1,119	859				6,688	141,366	14,958	15,513	13,697			
JB-7	0	0	0	0	0	0				0	43,512	0	1	6			
JB-8	952	897	936	881	922	720				5,308	108,058	11,939	12,218	10,735			
Field Total:	4,932	4,651	4,876	4,520	4,718	3,909	0	0	0	0	0	0	27,606	1,654,960	61,892	67,554	63,219
Daily Avg.(mmscfd)	159	160	157	151	152	130	0	0	0	0	0	0	152		170	185	173
Field :	Kailas Tila																
KTL-1	0	0	0	0	0	0				0	205,181	0	0	0			

Monthly Production by Field and Well upto June 2024



HYDROCARBON UNIT
Energy & Mineral Resources Division

Figures in mmscf

Well	Jan	Feb	Mar	Apr	May	Jun	Jul	Aug	Sep	Oct	Nov	Dec	Total	Cumulative	2023	2022	2021
KTL-2	191	177	187	178	183	176							1,091	194,290	227	0	1,368
KTL-3	0	0	0	0	0	0							0	140,672	0	0	0
KTL-4	0	0	0	0	0	0							0	104,670	530	1,507	1,761
KTL-5	0	0	0	0	0	0							0	17,923	0	0	0
KTL-6	758	698	723	689	706	676							4,251	140,564	8,922	9,051	8,960
KTL-7	14	2	0	0	0	0							16	3,067	600	1,635	0
Field Total:	963	877	910	867	889	853	0	0	0	0	0	0	5,359	806,368	10,278	12,193	12,089
Daily Avg.(mmscfd)	31	30	29	29	29	28	0	0	0	0	0	0	29		28	33	33
Field : Kamta																	
Kamta-1	Production Suspended													21,139			
Field Total:			0	0	0	0	0	0	0	0	0	0		21,139			
Daily Avg.(mmscfd)																	
Field : Meghna																	
M-1	111	100	109	108	122	121							672	81,747	1,205	1,893	2,602
Field Total:	111	100	109	108	122	121	0	0	0	0	0	0	672	81,747	1,205	1,893	2,602
Daily Avg.(mmscfd)	4	3	4	4	4	4	0	0	0	0	0	0	4		3	5	7
Field : Moulavi Bazar																	
MV Bazar-2	121	100	101	104	112	107							646	58,985	1,117	833	330
MV Bazar-3	398	341	347	362	391	371							2,210	175,772	3,834	3,327	2,460
MV Bazar-4	7	9	8	9	9	6							49	60,591	235	228	624
MV Bazar-5	0	0	0	0	0	0								66			
MV Bazar-6	4	4	5	5	4	3							26	22,244	637	1,616	1,053
MV Bazar-7	0	0	0	0	0	0							0	5,659	12	0	0
MV Bazar-9	0	0	0	0	0	0							0	30,337	0	0	0
Field Total:	530	454	462	480	516	488	0	0	0	0	0	0	2,930	353,654	5,835	6,005	4,466
Daily Avg.(mmscfd)	17	16	15	16	17	16	0	0	0	0	0	0	16		16	16	12
Field : Narshingdi																	
N-1	478	453	482	453	471	463							2,800	176,322	5,664	5,828	5,812
N-2	281	264	270	270	268	222							1,574	75,832	3,575	3,917	4,001

Monthly Production by Field and Well upto June 2024



HYDROCARBON UNIT
Energy & Mineral Resources Division

Figures in mmscf

Well	Jan	Feb	Mar	Apr	May	Jun	Jul	Aug	Sep	Oct	Nov	Dec	Total	Cumulative	2023	2022	2021
Field Total:	759	717	751	723	739	684	0	0	0	0	0	0	4,374	252,153	9,239	9,746	9,814
Daily Avg.(mmscfd)	24	25	24	24	24	23	0	0	0	0	0	0	24		25	27	27
Field : Rashidpur																	
RP-1	567	531	570	547	568	549							3,332	202,982	6,660	6,619	6,557
RP-2	0	161	248	240	248	240							1,137	83,611	0	0	0
RP-3	217	203	217	210	217	210							1,274	146,370	2,555	2,555	2,444
RP-4	277	268	287	277	288	280							1,678	143,539	2,992	2,765	2,668
RP-5	0	0	0	0	0	0							0	25,647	0	0	0
RP-6	0	0	0	0	0	0							0	9,983	0	0	0
RP-7	223	217	231	217	227	234							1,349	74,497	2,087	1,688	1,634
RP-9	43	280	359	360	372	381							1,794				
RP-8	186	174	186	180	186	180							1,092	34,195	2,190	2,339	2,798
Field Total:	1,513	1,834	2,098	2,031	2,107	2,074	0	0	0	0	0	0	11,655	720,823	16,484	15,965	16,099
Daily Avg.(mmscfd)	49	63	68	68	68	69	0	0	0	0	0	0	64		45	44	44
Field : Salda Nadi																	
Salda-1													0	36,904	0	0	0
Salda-2	59	53	57	53	57	51							329	30,432	884	724	0
Salda-3	18	16	38	40	35	30							177	31,090	363	563	886
Salda-4	3	3	5	6	4	4							25	529	56	75	136
Field Total:	79	72	100	98	96	85	0	0	0	0	0	0	530	98,954	1,302	1,361	1,022
Daily Avg.(mmscfd)	3	2	3	3	3	3	0	0	0	0	0	0	3		4	4	3
Field : Sangu																	
Sangu-1	0	0	0	0	0	0	0	0	0	0	0	0	0	116,191	0	0	0
Sangu-3z	0	0	0	0	0	0	0	0	0	0	0	0	0	131,796	0	0	0
Sangu-4	0	0	0	0	0	0	0	0	0	0	0	0		87,280			
Sangu-5	0	0	0	0	0	0	0	0	0	0	0	0		61,674			
Sangu-7	0	0	0	0	0	0	0	0	0	0	0	0		18,202			
Sangu-8	0	0	0	0	0	0	0	0	0	0	0	0		37,619			
Sangu-9	0	0	0	0	0	0	0	0	0	0	0	0	0	30,638	0	0	0

Monthly Production by Field and Well upto June 2024



HYDROCARBON UNIT
Energy & Mineral Resources Division

Figures in mmscf

Well	Jan	Feb	Mar	Apr	May	Jun	Jul	Aug	Sep	Oct	Nov	Dec	Total	Cumulative	2023	2022	2021	
Sangu-10	Production Suspended						0	0	0	0	0	0	0	0	0	0	0	0
Sangu-11	0	0	0	0	0	0		0	0	0	0	0	0	6,067	0	0	0	
Field Total:	0	0	0	0	0	0	0	0	0	0	0	0	0	489,467	0	0	0	
Daily Avg.(mmscfd)	0	0	0	0	0	0	0	0	0	0	0	0	0		0	0	0	
Field : Semutang																		
Semutang-5													0	12,311	0	0	3	
Semutang-6	29	27	29	29	34	32							180	2,340	288	261	290	
Field Total:	29	27	29	29	34	32	0	0	0	0	0	0	180	14,651	288	261	293	
Daily Avg.(mmscfd)	1	1	1	1	1	1	0	0	0	0	0	0	1		1	1	1	
Field : Shahbazpur																		
Shahbazpur-1		22		0	0	0							22	23,305	616	134	48	
Shahbazpur-2	455	321	414	362	387	436							2,377	41,823	4,002	6,906	6,132	
Shahbazpur-3	485	345	461	439	421	402							2,553	47,705	5,674	6,663	7,520	
Shahbazpur-4	671	605	673	787	811	742							4,290	46,964	8,166	7,381	5,987	
East 1	544	354	522	535	490	522							2,967	10,269	5,654	1,648	0	
Field Total:	2,155	1,646	2,071	2,124	2,110	2,103	0	0	0	0	0	0	12,208	170,067	24,112	21,083	19,686	
Daily Avg.(mmscfd)	70	57	67	71	68	70	0	0	0	0	0	0	67		66	58	54	
Field : Srikail																		
Srikail-2	258	233	249	187	188	220							1,336	58,143	2,818	3,326	2,981	
Srikail-3	140	98	92	62	42	123							557	48,239	1,356	2,266	1,880	
Srikail-4	434	361	398	364	374	336							2,266	36,870	6,162	7,102	7,309	
East 1	152	133	134	117	112	100							746	7,270	2,085	2,584	1,854	
Field Total:	984	825	873	730	716	778	0	0	0	0	0	0	4,905	150,522	12,422	15,279	14,024	
Daily Avg.(mmscfd)	32	28	28	24	23	26	0	0	0	0	0	0	27		34	42	33	
Field : Sundalpur																		
Sundalpur -1													0	9,809	0	0	0	
Sundalpur -2	99	93	102	101	74	33							501	16,232	2,769	2,813	2,752	
Field Total:	99	93	102	101	74	33	0	0	0	0	0	0	501	26,041	2,769	2,813	2,752	

Monthly Production by Field and Well upto June 2024



HYDROCARBON UNIT
Energy & Mineral Resources Division

Figures in mmscf

Well	Jan	Feb	Mar	Apr	May	Jun	Jul	Aug	Sep	Oct	Nov	Dec	Total	Cumulative	2023	2022	2021
Daily Avg.(mmscfd)	3	3	3	3	2	1	0	0	0	0	0	0	3		8	8	8
Field : Sylhet																	
Sylhet-3	Production Suspended													89,032			
Sylhet-6	Production Suspended													91,748			
Sylhet-7	17	16	18	17	17	10							96	31,573	222	307	1,207
Surma-1	16	15	16	15	16	15							91	7,319	197	503	0
Sylhet-9	136	129	139	135	135	134							808	4,275	1,568	1,381	518
Field Total:	169	160	172	167	168	159	0	0	0	0	0	0	996	223,947	1,987	2,192	1,207
Daily Avg.(mmscfd)	5	6	6	6	5	5	0	0	0	0	0	0	5		5	6	3
Field : Titas																	
Titas-1	446	433	458	440	447	413							2,637	472,175	5,759	5,838	6,039
Titas-2	651	610	651	629	638	610							3,788	485,187	8,014	8,452	9,335
Titas-3	0	0	0	0	0	0							0	314,888	0	0	0
Titas-4	730	683	722	699	715	689							4,238	422,853	9,122	9,122	9,551
Titas-5	760	726	777	752	765	727							4,507	482,988	9,325	9,770	9,889
Titas-6	830	772	825	783	815	785							4,811	416,244	9,458	10,079	9,754
Titas-7	663	623	648	620	632	596							3,783	381,593	8,077	8,312	4,528
Titas-8	555	534	569	543	567	555							3,323	306,751	6,608	6,649	6,569
Titas-9	513	497	527	501	526	507							3,071	310,282	5,967	6,380	6,404
Titas-10	639	602	638	614	631	611							3,736	240,973	7,461	7,998	7,512
Titas-11	650	613	635	615	625	598							3,736	292,943	7,950	8,511	7,571
Titas-12	377	352	375	360	361	340							2,165	128,386	5,224	5,192	4,363
Titas-13	0	0	0	0	0	0							0	194,541	0	0	0
Titas-14	0	0	0	0	67	174							241	163,456	0	0	2,195
Titas-15	90	35	35	6	0	0							166	156,125	1,313	2,653	3,194
Titas-16	329	591	606	568	582	570							3,246	183,258	6,667	6,781	6,637
Titas-17	329	304	327	238	257	272							1,728	64,909	3,914	4,551	4,450
Titas-18	415	392	414	298	295	332							2,146	66,449	4,699	5,227	5,093
Titas-19	584	567	597	566	585	574							3,473	58,767	6,021	5,690	5,187
Titas-20	303	283	294	267	278	283							1,707	39,010	3,414	3,622	4,031
Titas-21	279	253	261	257	264	252							1,566	26,342	3,221	3,375	3,020

Monthly Production by Field and Well upto June 2024



HYDROCARBON UNIT
Energy & Mineral Resources Division

Figures in mmscf

Well	Jan	Feb	Mar	Apr	May	Jun	Jul	Aug	Sep	Oct	Nov	Dec	Total	Cumulative	2023	2022	2021
Titas-22	0	0	0	0	0	0							0	30,349	0	0	362
Titas-27	453	419	435	386	371	398							2,462	58,739	5,183	6,002	5,418
Titas-23	539	531	568	547	571	551							3,306	42,347	6,434	5,880	6,314
Titas-24	253	241	259	243	256	248							1,499	12,683	1,703	462	0
Titas-25	421	392	435	429	449	447							2,573	43,230	5,267	5,889	5,439
Titas-26	893	875	939	895	910	888							5,400	69,996	9,599	8,956	9,188
Field Total:	11,702	11,329	11,996	11,255	11,604	11,423	0	0	0	0	0	0	69,309	5,465,465	140,399	145,392	142,044
Daily Avg.(mmscfd)	377	391	387	375	374	381	0	0	0	0	0	0	381		385	398	389
Field :	Begumganj																
Begumganj-3	248	224	237	231	242	227							1,408	15,622	2,960	2,976	2,719
Field Total:	248	224	237	231	242	227	0	0	0	0	0	0	1,408	15,622	2,960	2,976	2,719
Daily Avg.(mmscfd)	8	8	8	8	8	8	0	0	0	0	0	0	8		8	8	7
Field :	Rupganj																
Rupganj-1	0	0	0	0	0	0	0	0	0	0	0	0	0	679	0	0	0
Field Total:	0	0	0	0	0	0	0	0	0	0	0	0	0	679	0	0	0
Daily Avg.(mmscfd)	0	0	0	0	0	0	0	0	0	0	0	0	0		0	0	0
Grand Total (in Bcf)	63.20	59.32	63.26	55.25	61.79	58.42	0.00	0.00	0.00	0.00	0.00	0.00	361.2	21,099.36	774.3	828.2	858.5
Daily Avg.(mmscfd)	2,039	2,046	2,041	1,842	1,993	1,947	0	0	0	0	0	0	1,985		2,121	2,269	2,352

Monthly Condensate Production by Fields upto June 2024



Field Name	Jan	Feb	Mar	Apr	May	Jun	Jul	Aug	Sep	Oct	Nov	Dec	Total	Cumulative	2023	2022	
														000' bbl			
Bakhrabad	1,316	1,186	1,109	995	1,013	1,002							6,621	1,096	14,161	14,234	
Daily Avg.	42	42	36	33	33	33	0	0	0	0	0	0	36		39	39	
Bangura	3,954	3,675	3,912	2,806	3,753	3,512							21,612	1,460	49,483	49,145	
Daily Avg.	128	131	126	94	121	117	0	0	0	0	0	0	119		136	135	
Beani Bazar	7,196	6,696	7,164	6,845	7,200	6,929							42,030	1,871	83,268	40,093	
Daily Avg.	232	239	231	228	232	231	0	27	0	0	0	0	231		228	110	
Bibiyana	185,170	171,336	182,286	142,183	175,479	163,757							1,020,211	33,945	2,200,139	1,647,046	
Daily Avg.	5,973	6,119	5,880	4,739	5,661	5,459	0	0	0	0	0	0	5,606		6,028	4,512	
Chattak	0	0	0	0	0	0	0	0	0	0	0	0	0	4	0	0	
Daily Avg.	0	0	0	0	0	0	0	0	0	0	0	0	0		0	0	
Fenchuganj	116	106	93	63	72	72							522	123	1,525	2,396	
Daily Avg.	4	4	3	2	2	2	0	0	0	0	0	0	3		4	7	
Feni	0	0	0	0	0	0	0	0	0	0	0	0	0	110	0	0	
Daily Avg.	0	0	0	0	0	0	0	0	0	0	0	0	0		0	0	
Habiganj	183	193	212	207	162	176							1,133	152	2,269	2,705	
Daily Avg.	6	7	7	7	5	6	0	0	0	0	0	0	6		6	7	
Jalalabad	25,703	24,775	27,987	23,874	24,794	20,130							147,263	11,943	295,857	329,117	
Daily Avg.	829	885	903	796	800	671	0	0	0	0	0	0	809		811	902	
Kailas Tila	13,191	11,668	12,490	11,892	12,024	6,870							68,135	8,619	132,283	149,408	
Daily Avg.	426	417	403	396	388	229	0	0	0	0	0	0	374		362	409	
Kamta	Production Suspended										0	0		4			
Daily Avg.	0										0	0		0		0	0
Meghna	157	149	160	155	145	129							895	133	2,103	3,491	
Daily Avg.	5	5	5	5	5	4	0	0	0	0	0	0	5		6	10	
Moulavi Bazar	286	80	101	63	57	59							646	122	667	995	

Monthly Condensate Production by Fields upto June 2024



Field Name	Jan	Feb	Mar	Apr	May	Jun	Jul	Aug	Sep	Oct	Nov	Dec	Total	Cumulative	2023	2022
														000' bbl		
Daily Avg.	9	3	3	2	2	2	0	0	0	0	0	0	4		2	3
Narshingdi	983	895	930	890	904	835							5,437	492	11,904	14,905
Daily Avg.	32	32	30	30	29	28	0	0	0	0	0	0	30		33	41
Rashidpur	1,327	1,228	1,296	1,197	1,242	1,251							7,541	858	14,542	14,105
Daily Avg.	43	44	42	40	40	42	0	0	0	0	0	0	41		40	39
Saldanadi	51	46	50	45	48	45							285	60	640	585
Daily Avg.	2	2	2	2	2	2	0	0	0	0	0	0	2		2	2
Sangu	0	0	0	0	0	0	0	0	0	0	0	0	0	37	0	0
Daily Avg.	0	0	0	0	0	0	0	0	0	0	0	0	0		0	0
Semutang	0	0	0	0	0	0	0	0	0	0	0	0	0	5	0	0
Daily Avg.	0	0	0	0	0	0	0	0	0	0	0	0	0		0	0
Shahbazpur	247	210	347	328	311	306							1,749	20	2,824	2,640
Daily Avg.	8	8	11	11	10	10	0	0	0	0	0	0	10		8	7
Srikail	4,142	3,180	3,083	2,630	1,823	2,767							17,625	376	49,927	63,152
Daily Avg.	134	114	99	88	59	92	0	0	0	0	0	0	97		137	173
Sundalpur	0	0	0	0	0	0							0	1	128	152
Daily Avg.	0	0	0	0	0	0	0	0	0	0	0	0	0		0	0
Sylhet	1,085	1,027	1,110	1,047	1,010	905							6,184	857	12,087	13,919
Daily Avg.	35	37	36	35	33	30	0	0	0	0	0	0	34		33	38
Titas	12,918	11,325	11,539	9,956	10,086	9,873							65,697	5,895	121,753	115,793
Daily Avg.	417	404	372	332	325	329	0	0	0	0	0	0	361		334	317
Begumganj	60	56	53	58	65	51							343	4	915	814
Daily Avg.	2	2	0	0	0	2	0	0	0	0	0	0	2		3	2
Rupganj	0	0	0	0	0	0	0	0	0	0	0	0	0	1	0	0
Daily Avg.	0	0	0	0	0	0	0	0	0	0	0	0	0		0	0
Total (000'bbl)	258	238	254	205	240	219	0	0	0	0	0	0	1,414	68,190	2,996	2,463
Daily Avg. (000'bbl)	8.3	8.2	8.2	6.8	7.7	7	0.0	0.0	0.0	0.0	0	0	8		8.2	6.8

Note: Historical condensate figure of Sangu available from 2006. Sylhet available from August 1964

Monthly Water Production by Fields in June 2024



HYDROCARBON UNIT
Energy & Mineral Resources Division

Field Name	Jan	Feb	Mar	Apr	May	Jun	Jul	Aug	Sep	Oct	Nov	Dec	Total	2023	2,022
Bakhrabad	11,217	10,364	11,357	11,029	11,557	11,494							67,018	106,851	41,667
Daily Avg.	362	370	366	368	373	383	0	0	0	0	0	0	368	293	114
Bangura	2,743	2,536	2,671	2,106	2,777	2,524							15,357	34,711	228,414
Daily Avg.	88	91	86	70	90	84	0	0	0	0	0	0	84	95	626
Beani Bazar	31,973	31,539	35,850	36,885	39,757	39,042							215,046	275,983	227,536
Daily Avg.	1,031	1,126	1,156	1,230	1,282	1,301	0	0	0	0	0	0	1,182	756	623
Bibiyana	25,419	23,974	25,997	22,546	25,962	24,796							148,694	320,409	300,138
Daily Avg.	820	856	839	752	837	827	0	0	0	0	0	0	817	878	822
Chattak	0	0	0	0	0	0	0	0	0	0	0	0	0	0	0
Daily Avg.	0	0	0	0	0	0	0	0	0	0	0	0	0	0	0
Fenchuganj	4,227	3,616	3,356	2,032	2,214	2,154							17,599	43,894	40,238
Daily Avg.	136	129	108	68	71	72	0	0	0	0	0	0	97	120	110
Feni	0	0	0	0	0	0	0	0	0	0	0	0	0	0	0
Daily Avg.	0	0	0	0	0	0	0	0	0	0	0	0	0	0	0
Habiganj	10,685	11,181	10,950	10,606	10,980	9,086							63,488	117,632	76,382
Daily Avg.	345	399	353	354	354	303	0	0	0	0	0	0	349	322	209
Jalalabad	2,155	2,096	2,159	1,986	2,071	1,814							12,281	22,062	46,828
Daily Avg.	70	75	70	66	67	60	0	0	0	0	0	0	67	60	128
Kailas Tila	17,695	3,664	234	221	219	213							22,246	417,894	166,147
Daily Avg.	571	131	8	7	7	7	0	0	0	0	0	0	122	1,145	455
Kamta	0	0	0	0	0	0	0	0	0	0	0	0	0	0	0
Daily Avg.	0	0	0	0	0	0	0	0	0	0	0	0	0	0	0
Meghna	11,864	11,124	11,574	11,361	11,830	11,618							69,371	105,797	85,545
Daily Avg.	383	397	373	379	382	387	0	0	0	0	0	0	381	290	234
Moulavi Baz	264	269	255	292	289	278							1,647	3,159	3,396
Daily Avg.	9	10	8	10	9	9	0	0	0	0	0	0	9	9	9
Narshingdi	866	813	861	806	800	723							4,869	10,444	11,738
Daily Avg.	28	29	28	27	26	24	0	0	0	0	0	0	27	29	32
Rashidpur	23,798	22,307	24,068	23,266	24,344	24,060							141,843	267,005	236,678
Daily Avg.	768	797	776	776	785	802	0	0	0	0	0	0	779	732	648
Saldanadi	84	87	100	86	88	87							532	1,224	1,564
Daily Avg.	3	3	3	3	3	3	0	0	0	0	0	0	3	3	4

Monthly Water Production by Fields in June 2024



HYDROCARBON UNIT
Energy & Mineral Resources Division

Field Name	Jan	Feb	Mar	Apr	May	Jun	Jul	Aug	Sep	Oct	Nov	Dec	Total	2023	2,022
Sangu	0	0	0	0	0	0	0	0	0	0	0	0	0	0	0
Daily Avg.	0	0	0	0	0	0	0	0	0	0	0	0	0	0	0
Semutang	7,505	7,515	8,495	8,375	9,432	9,066							50,388	62,161	35,265
Daily Avg.	242	268	274	279	304	302	0	0	0	0	0	0	277	170	97
Shahbazpur	2,469	1,880	2,390	2,483	2,469	2,456							14,147	29,571	27,855
Daily Avg.	80	67	77	83	80	82	0	0	0	0	0	0	78	81	76
Srikail	1,951	1,624	1,766	1,509	1,533	1,939							10,322	19,673	19,797
Daily Avg.	63	58	57	50	49	65	0	0	0	0	0	0	57	54	54
Sundalpur	3,752	3,532	3,736	3,615	3,589	2,965							21,189	9,242	541
Daily Avg.	121	126	121	121	116	99	0	0	0	0	0	0	116	25	1
Sylhet	16,299	15,247	16,290	15,765	16,300	11,783							91,684	192,089	176,282
Daily Avg.	526	545	525	526	526	393	0	0	0	0	0	0	504	526	483
Titas	15,887	12,477	13,098	10,948	11,310	12,559							76,279	183,942	210,230
Daily Avg.	512	446	423	365	365	419	0	0	0	0	0	0	419	504	576
Begumganj	85	77	73	75	89	84							484	944	1,024
Daily Avg.	3	3	2	3	3	3	0	0	0	0	0	0	3	3	3
Rupganj	0	0	0	0	0	0	0	0	0	0	0	0	0	0	0
Daily Avg.	0	0	0	0	0	0	0	0	0	0	0	0	0	0	0
Total (000'b	190,938	165,922	175,280	165,992	177,610	168,741	0	0	0	0	0	0	1,044,484	2,224,688	1,937,265
Daily Avg. (000'bbl)	6,159	5,721	5,654	5,533	5,729	5,625	0	0	0	0	0	0	5,739	6,095	5,308

Conditions of Field and Well upto June 2024



HYDROCARBON UNIT
Energy & Mineral Resources Division

Well	company	well type	Discovery	production start	Drilled depth (ft)	Pressure	Pressure type	Completion Zone
Field : Bakharabad								
BKB-1	BGFCL	Vertical	1969	June,1969	9309		FWHP	J
BKB-2	BGFCL	Directional	1969	October,1981	7496	248-274	FWHP	G
BKB-3	BGFCL	Directional	1969	April,1982	9339	356-412	FWHP	G
BKB-4	BGFCL	Directional	1969	June,1982	9430			D
BKB-5	BGFCL	Directional	1969	Sept,1982	9675	1555-1646	FWHP	B
BKB-6	BGFCL	Directional	1969	March,1989	8785			J
BKB-7	BGFCL	Directional	1969	July,1989	8605		FWHP	J
BKB-8	BGFCL	Directional	1969	Sept,1989	8840	490-523	FWHP	J
BKB-9	BGFCL	Vertical	1969	August,2013	8318	1005-1097	FWHP	G
BKB-10	BGFCL	Directional	1969	June,2016	9291	1010-1102	FWHP	K
Field : Bangura								
Bangura-1	Tullow		2004			887-940	FWHP	D
Bangura-2	Tullow		2004			587-685	FWHP	D/E
Bangura-3	Tullow		2004			719-789	FWHP	D
Bangura-6	Tullow		2004			708-780	FWHP	D
Bangura-5	Tullow		2004			579-621	FWHP	D
Field : Beani Bazar								
BB-1	SGFL		1981	July,1999	13480	580-620	SIWHP	Upper
BB-2	SGFL		1981	July,1999	12048	3210-3220	FWHP	Upper
Field : Bibiyana								
BY-1	Chevron		1998			1547-2007	FWHP	BB60,BB66
BY-2	Chevron		1998			1313-1390	FWHP	BB60,BH20A, BH20E
BY-3	Chevron		1998			1363-1403	FWHP	BB70
BY-4	Chevron		1998			1330-1390	FWHP	BH10
BY-5	Chevron		1998			1254-1299	FWHP	BH20A, BH20B, BH20C, BH20D
BY-6	Chevron		1998			1250-1486	FWHP	BB70
BY-7	Chevron		1998			1454-1566	FWHP	BH10
BY-8	Chevron		1998			1270-1297	FWHP	BH20A, BH20B
BY-9	Chevron		1998			1243-1273	FWHP	BH10
BY-10	Chevron		1998			1465-1533	FWHP	BB60
BY-11	Chevron		1998			1260-1284	FWHP	BH20A, BH20B
BY-12	Chevron		1998			1259-1332	FWHP	BB70
BY-13	Chevron		1998			1300-1356	FWHP	BH20A, BH20B
BY-14	Chevron		1998			1342-1632	FWHP	BH20A, BH20B
BY-15	Chevron		1998			2189-2240	FWHP	BB60

Conditions of Field and Well upto June 2024



Conditions of Field and Well upto June 2024								
Well	company	well type	Discovery	production start	Drilled depth (ft)	Pressure	Pressure type	Completion Zone
Field : Chattak								
BY-16	<i>Chevron</i>		<i>1998</i>			<i>1381-1644</i>	<i>FWHP</i>	<i>BH10, BH20D</i>
BY-17	<i>Chevron</i>		<i>1998</i>			<i>2104-2229</i>	<i>FWHP</i>	<i>BB60</i>
BY-18	<i>Chevron</i>		<i>1998</i>			<i>1904-2218</i>	<i>FWHP</i>	<i>BB60</i>
BY-19	<i>Chevron</i>		<i>1998</i>			<i>1354-1477</i>	<i>FWHP</i>	<i>BH10, BH20A</i>
BY-20	<i>Chevron</i>		<i>1998</i>			<i>1248-1262</i>	<i>FWHP</i>	<i>BH20D, BH20A, BH10</i>
BY-21	<i>Chevron</i>		<i>1998</i>			<i>1333-1348</i>	<i>FWHP</i>	<i>BH20A, BH20B, BH10</i>
BY-22	<i>Chevron</i>		<i>1998</i>			<i>1552-1586</i>	<i>FWHP</i>	<i>BB60</i>
BY-23	<i>Chevron</i>		<i>1998</i>			<i>1739-2021</i>	<i>FWHP</i>	<i>BH10, BH20A, BH20B, BH20C</i>
BY-24	<i>Chevron</i>		<i>1998</i>			<i>1337-2091</i>	<i>FWHP</i>	<i>BB60</i>
BY-25	<i>Chevron</i>		<i>1998</i>			<i>1728-1857</i>	<i>FWHP</i>	<i>BB60, BB66</i>
BY-26	<i>Chevron</i>		<i>1998</i>			<i>1877-2094</i>	<i>FWHP</i>	<i>BB60, BB64</i>
Field : Chattak								
Ch-1	<i>SGFL</i>		<i>1959</i>					
Field : Fenchuganj								
Fenchuganj-2	<i>BAPEX</i>		<i>1988</i>	<i>May, 2004</i>				
Fenchuganj-3	<i>BAPEX</i>		<i>1988</i>	<i>February, 2005</i>		<i>2004-2010</i>		<i>upper</i>
Fenchuganj-4	<i>BAPEX</i>		<i>1988</i>			<i>2037-2065</i>		
Field : Feni								
Feni-1	<i>BAPEX</i>		<i>1981</i>					
Feni-2	<i>BAPEX</i>		<i>1981</i>					
Feni-3	<i>BAPEX</i>		<i>1981</i>					
Feni-4	<i>BAPEX</i>		<i>1981</i>					
Feni-5	<i>BAPEX</i>		<i>1981</i>					
Field : Habiganj								
Hbj-1	<i>BGFCL</i>	<i>Vertical</i>	<i>1963</i>	<i>Feb,1969</i>	<i>11500</i>		<i>FWHP</i>	<i>upper</i>
Hbj-2	<i>BGFCL</i>	<i>Vertical</i>	<i>1963</i>	<i>Feb,1969</i>	<i>5100</i>		<i>FWHP</i>	<i>upper</i>
Hbj-3	<i>BGFCL</i>	<i>Vertical</i>	<i>1963</i>	<i>July,1985</i>	<i>5282</i>	<i>1478-1486</i>	<i>FWHP</i>	<i>upper</i>
Hbj-4	<i>BGFCL</i>	<i>Vertical</i>	<i>1963</i>	<i>May,1985</i>	<i>5249</i>	<i>1460-1467</i>	<i>FWHP</i>	<i>upper</i>
Hbj-5	<i>BGFCL</i>	<i>Directional</i>	<i>1963</i>	<i>Feb,1992</i>	<i>11552</i>	<i>1440-1446</i>	<i>FWHP</i>	<i>upper</i>
Hbj-6	<i>BGFCL</i>	<i>Vertical</i>	<i>1963</i>	<i>Feb,1992</i>	<i>5515</i>	<i>1375-1379</i>	<i>FWHP</i>	<i>upper</i>
Hbj-7	<i>BGFCL</i>	<i>Vertical</i>	<i>1963</i>	<i>April,2000</i>	<i>10236</i>	<i>1331-1139</i>	<i>FWHP</i>	<i>upper</i>
Hbj-8	<i>BGFCL</i>	<i>Vertical</i>	<i>1963</i>	<i>May, 2000</i>	<i>5280</i>			<i>upper</i>
Hbj-9	<i>BGFCL</i>	<i>Vertical</i>	<i>1963</i>	<i>July,1998</i>	<i>5249</i>			<i>upper</i>
Hbj-10	<i>BGFCL</i>	<i>Vertical</i>	<i>1963</i>	<i>Apr, 2000</i>	<i>5133</i>	<i>1322-1331</i>	<i>FWHP</i>	<i>upper</i>
Hbj-11	<i>BGFCL</i>	<i>Vertical</i>	<i>1963</i>	<i>February,2008</i>	<i>10499</i>	<i>1417-1423</i>	<i>FWHP</i>	<i>upper</i>
Field : Jalalabad								

Conditions of Field and Well upto June 2024



HYDROCARBON UNIT

Energy & Mineral Resources Division

Well	company	well type	Discovery	production start	Drilled depth (ft)	Pressure	Pressure type	Completion Zone
JB-1	<i>Chevron</i>		<i>1989</i>			<i>1333-1436</i>	<i>FWHP</i>	<i>BB60, BB50</i>
JB-2	<i>Chevron</i>		<i>1989</i>			<i>1279-1294</i>	<i>FWHP</i>	<i>BB50, BB60</i>
JB-3	<i>Chevron</i>		<i>1989</i>			<i>1332-1375</i>	<i>FWHP</i>	<i>BB50, BB60</i>
JB-4	<i>Chevron</i>		<i>1989</i>			<i>1365-1425</i>	<i>FWHP</i>	<i>BB60</i>
JB-6	<i>Chevron</i>		<i>1989</i>			<i>1354-1362</i>	<i>FWHP</i>	<i>BB60, BB50</i>
JB-7	<i>Chevron</i>		<i>1989</i>			<i>1666-1679</i>	<i>FWHP</i>	<i>BB20</i>
JB-8	<i>Chevron</i>		<i>1989</i>			<i>1362-1370</i>	<i>FWHP</i>	<i>BB50, BB60</i>
Field : Kailas Tila								
KTL-1	<i>SGFL</i>		<i>1962</i>	<i>June, 1983</i>	<i>12417</i>	<i>0</i>	<i>SIWHP</i>	
KTL-2	<i>SGFL</i>		<i>1962</i>	<i>Feb, 1995</i>		<i>2225-2230</i>	<i>FWHP</i>	
KTL-3	<i>SGFL</i>		<i>1962</i>	<i>March, 1995</i>		<i>2470-2495</i>	<i>FWHP</i>	
KTL-4	<i>SGFL</i>		<i>1962</i>	<i>March, 1997</i>		<i>2360-2410</i>	<i>FWHP</i>	
KTL-5	<i>SGFL</i>		<i>1962</i>	<i>Sep, 2006</i>		<i>0</i>	<i>SIWHP</i>	
KTL-6	<i>SGFL</i>		<i>1962</i>	<i>Aug, 2007</i>		<i>2490-2495</i>	<i>FWHP</i>	
KTL-7	<i>SGFL</i>		<i>1962</i>			<i>0</i>	<i>SIWHP</i>	
Field : Kamta								
Kamta-1	<i>BGFCL</i>	<i>Vertical</i>	<i>1981</i>	<i>july,1982</i>	<i>11857</i>			<i>N/A</i>
Field : Meghna								
M-1	<i>BGFCL</i>	<i>Vertical</i>	<i>2004</i>	<i>july,1990</i>	<i>10069</i>	<i>1400-1450</i>	<i>FWHP</i>	<i>A,E,F & G</i>
Field : Moulavi Bazar								
MV Bazar-2	<i>Chevron</i>		<i>1997</i>			<i>800-820</i>	<i>FWHP</i>	<i>BB70</i>
MV Bazar-3	<i>Chevron</i>		<i>1997</i>			<i>800-820</i>	<i>FWHP</i>	<i>BB70</i>
MV Bazar-4	<i>Chevron</i>		<i>1997</i>			<i>946-952</i>	<i>FWHP</i>	<i>BB20</i>
MV Bazar-5	<i>Chevron</i>		<i>1997</i>			<i>0</i>	<i>SIWHP</i>	<i>BB60</i>
MV Bazar-6	<i>Chevron</i>		<i>1997</i>			<i>822-890</i>	<i>FWHP</i>	<i>BB20</i>
MV Bazar-7	<i>Chevron</i>		<i>1997</i>			<i>844-901</i>	<i>FWHP/SIWHP</i>	<i>BB20</i>
MV Bazar-9	<i>Chevron</i>		<i>1997</i>			<i>0</i>	<i>SIWHP</i>	<i>BB46, BB48, BB60</i>
Field : Narshingdi								
N-1	<i>BGFCL</i>	<i>vertical</i>	<i>1990</i>	<i>october,1990</i>	<i>11320</i>	<i>1143-1197</i>	<i>FWHP</i>	<i>BL</i>
N-2	<i>BGFCL</i>	<i>vertical</i>	<i>1990</i>	<i>february,2007</i>	<i>10778</i>	<i>1015-1097</i>	<i>FWHP</i>	<i>BL</i>
Field : Rashidpur								
RP-1	<i>SGFL</i>		<i>1960</i>			<i>1290-1291</i>	<i>FWHP</i>	<i>Upper</i>
RP-2	<i>SGFL</i>		<i>1960</i>			<i>73</i>	<i>SIWHP</i>	<i>Lower</i>
RP-3	<i>SGFL</i>		<i>1960</i>			<i>1548-1568</i>	<i>FWHP</i>	<i>Lower</i>
RP-4	<i>SGFL</i>		<i>1960</i>			<i>1450-1655</i>	<i>FWHP</i>	<i>Lower</i>
RP-5	<i>SGFL</i>		<i>1960</i>			<i>2291</i>	<i>SIWHP</i>	<i>Lower</i>

Conditions of Field and Well upto June 2024



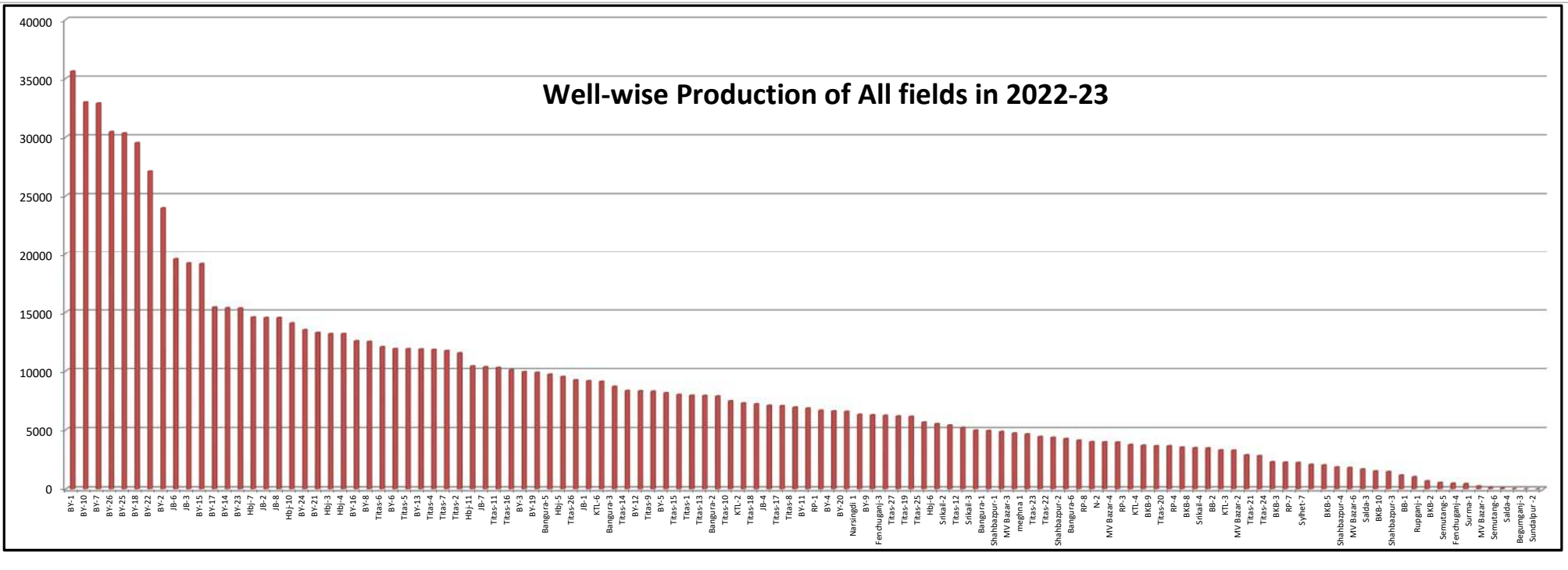
Well	company	well type	Discovery	production start	Drilled depth (ft)	Pressure	Pressure type	Completion Zone
RP-6	SGFL		1960			870	SIWHP	A
RP-7	SGFL		1960			1308-1338	FWHP	Lower
RP-8	SGFL		1960			1600-1625	FWHP	Upper
Field : Salda Nadi								
Salda-1	BAPEX		1995					
Salda-2	BAPEX		1995					
Salda-3	BAPEX	Directional	1995	February, 2012		639-640, 698-700		Upper/Lower
Salda-4	BAPEX		1995					
Field : Sangu								
Sangu-1	BGFCL		1996					
Sangu-3z	BGFCL		1996					
Sangu-4	BGFCL		1996					
Sangu-5	BGFCL		1996					
Sangu-7	BGFCL		1996					
Sangu-8	BGFCL		1996					
Sangu-9	BGFCL		1996					
Sangu-10	BGFCL		1996					
Sangu-11	BGFCL		1996					
Field : Semutang								
Semutang-5	BAPEX		1967			280-508		Lower Zone
Semutang-6	BAPEX		1967			750-1302		
Field : Shahbazpur								
Shahbazpur-1	BAPEX		1995	May, 2009		2310-3543		Lower Zone
Shahbazpur-2	BAPEX		1995			3541-4133		Lower Zone
Shahbazpur-3	BAPEX		1995			4300		Upper Zone
Shahbazpur-4	BAPEX		1995			4250		Upper Zone
Field : Srikail								
Srikail-2	BAPEX		2012			990-1016		Upper & Lower D
Srikail-3	BAPEX		2012			981-1043		Upper & Lower D
Srikail-4	BAPEX		2012			1018-1068		Upper & Lower D
Field : Sundalpur								
Sundalpur -1	BAPEX		2011					
Sundalpur -2	BAPEX		2011					
Field : Sylhet								
Sylhet-3	SGFL		1955	Aug, 1958				
Sylhet-6	SGFL		1955	Aug, 1964		800-850	SIWHP	

Conditions of Field and Well upto June 2024

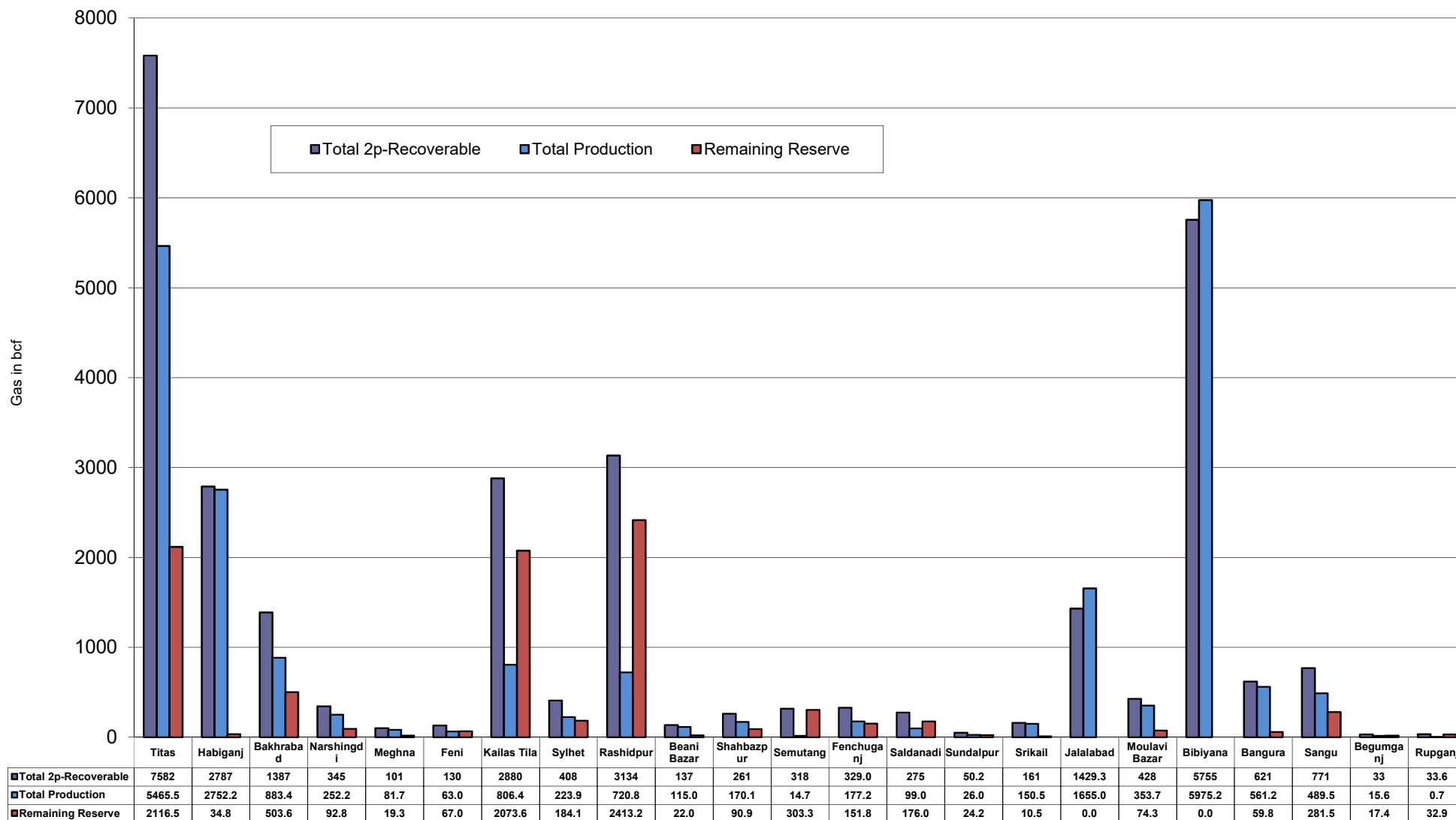


Well	company	well type	Discovery	production start	Drilled depth (ft)	Pressure	Pressure type	Completion Zone
Sylhet-7	SGFL		1955	Apr, 2005		1750-1820	FWHP	Lower Bokabil
Surma-1	SGFL		1955	June, 2010		230	SIWHP	C & D
Field :		Titas						
Titas-1	BGFCL	vertical	1962	Mar,1969	12325	900-925	FWHP	A
Titas-2	BGFCL	vertical	1962	Fen,1969	10574	960-1020	FWHP	A
Titas-3	BGFCL	vertical	1962	sept,1969	9315	0	FWHP	A
Titas-4	BGFCL	vertical	1962	oct,1969	9350	1020-1070	FWHP	A
Titas-5	BGFCL	Directional	1962	jan,1981	10805	990-1035	FWHP	A
Titas-6	BGFCL	vertical	1962	Feb,1984	10072	1195-1225	FWHP	A
Titas-7	BGFCL	Directional	1962	July,1985	11006	1090-1160	FWHP	A
Titas-8	BGFCL	Directional	1962	sept,1985	11760	1000-1030	FWHP	B & C
Titas-9	BGFCL	Directional	1962	jan,1988	11893	1040-1085	FWHP	B & C
Titas-10	BGFCL	Directional	1962	may,1988	12139	1140-1180	FWHP	A
Titas-11	BGFCL	vertical	1962	Jun,1991	10462	1275-1310	FWHP	A
Titas-12	BGFCL	Directional	1962	July,2002	9873	1465-1500	FWHP	A
Titas-13	BGFCL	Directional	1962	June,2000	11487	1085-1115	FWHP	A
Titas-14	BGFCL	Directional	1962	June,2000	11004	1200-1250	FWHP	A
Titas-15	BGFCL	vertical	1962	may,2006	10446	0	FWHP	A
Titas-16	BGFCL	Directional	1962	dec,2005	11673	1205-1225	FWHP	A
Titas-17	BGFCL	vertical	1962	feb,2013	9424	1145-1175	FWHP	A
Titas-18	BGFCL	Directional	1962	august,2013	10932	1165-1190	FWHP	A
Titas-19	BGFCL	Directional	1962	may,2014	12730	1365-1415	FWHP	A
Titas-20	BGFCL	Directional	1962	oct,2013	11585	1370-1440	FWHP	A
Titas-21	BGFCL	Directional	1962	dec,2013	11631	1260-1285	FWHP	A
Titas-22	BGFCL	Directional	1962	march,2014	11926	990-1025	FWHP	A
Titas-27	BGFCL	Directional	1962	april,2014	10292	1245-1265	FWHP	A
Titas-23	BGFCL	Directional	1962	feb,2017	11988	2265-2340	FWHP	C
Titas-24	BGFCL	Directional	1962	oct,2016	12686	1120-1245	FWHP	C
Titas-25	BGFCL	vertical	1962	march,2016	11680	1300-1340	FWHP	A
Titas-26	BGFCL	Directional	1962	july,2016	12618	1840-1875	FWHP	C
Field :		Begumganj						
Begumganj-3	BAPEX		1977					
Field :		Rupganj						
Rupganj-1	BAPEX		2014			38-88		

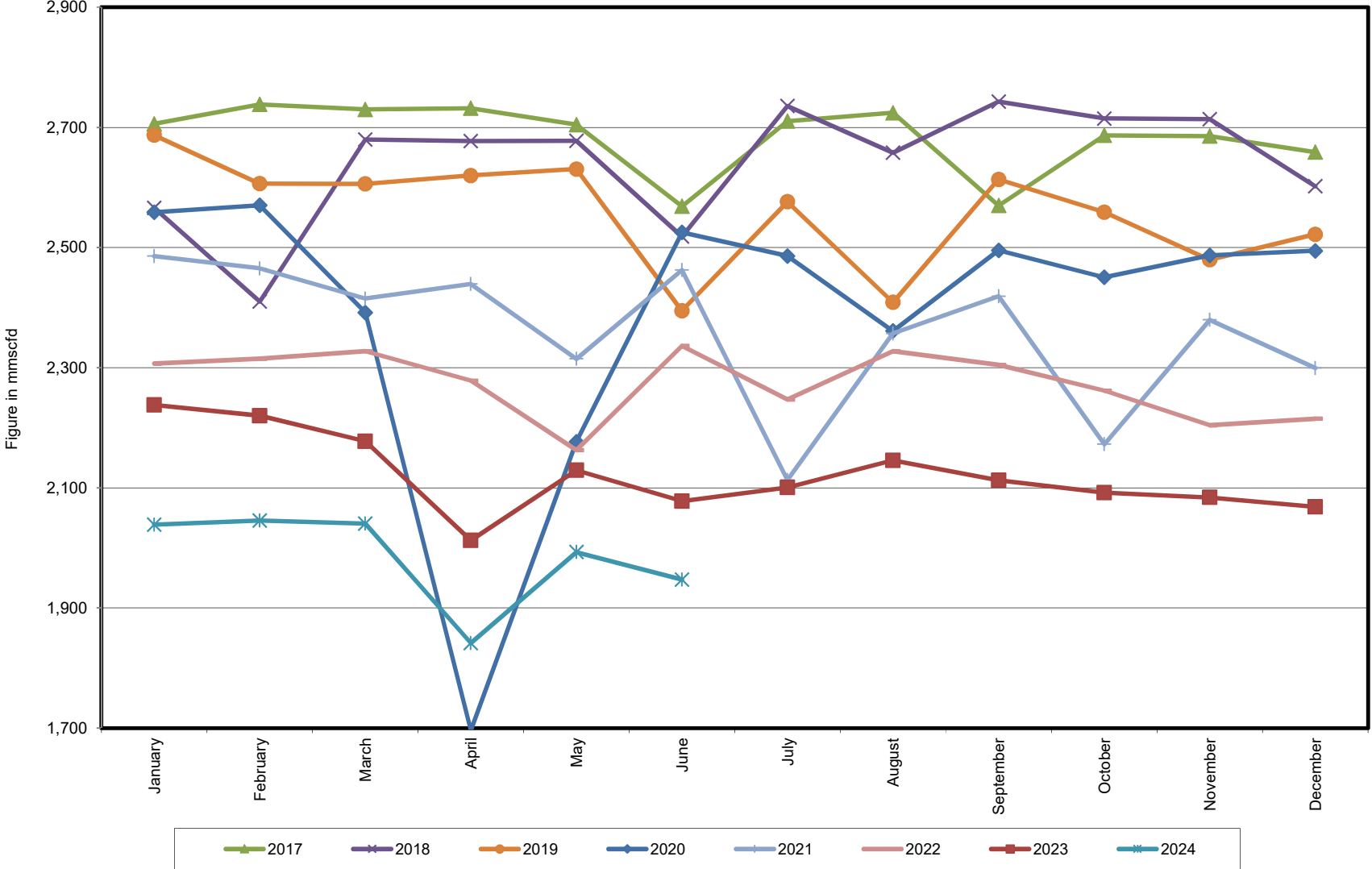
Well-wise Production of All fields in 2022-23



Reserve, Production and Remaining Reserve as of June 2024



Daily Avg. Production From January 2017 to June 2024



Field Wise Daily Avg. Production June 2024

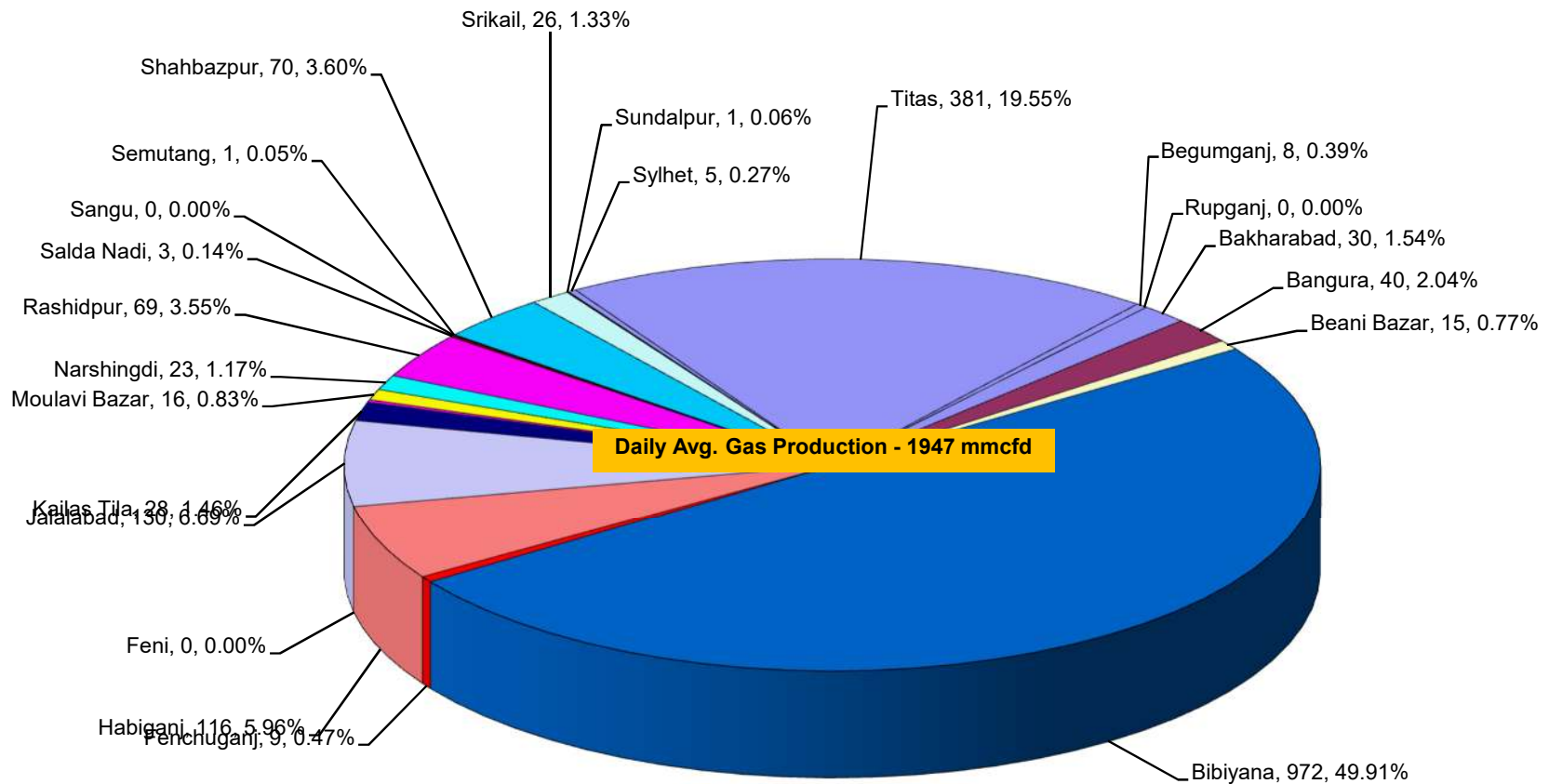
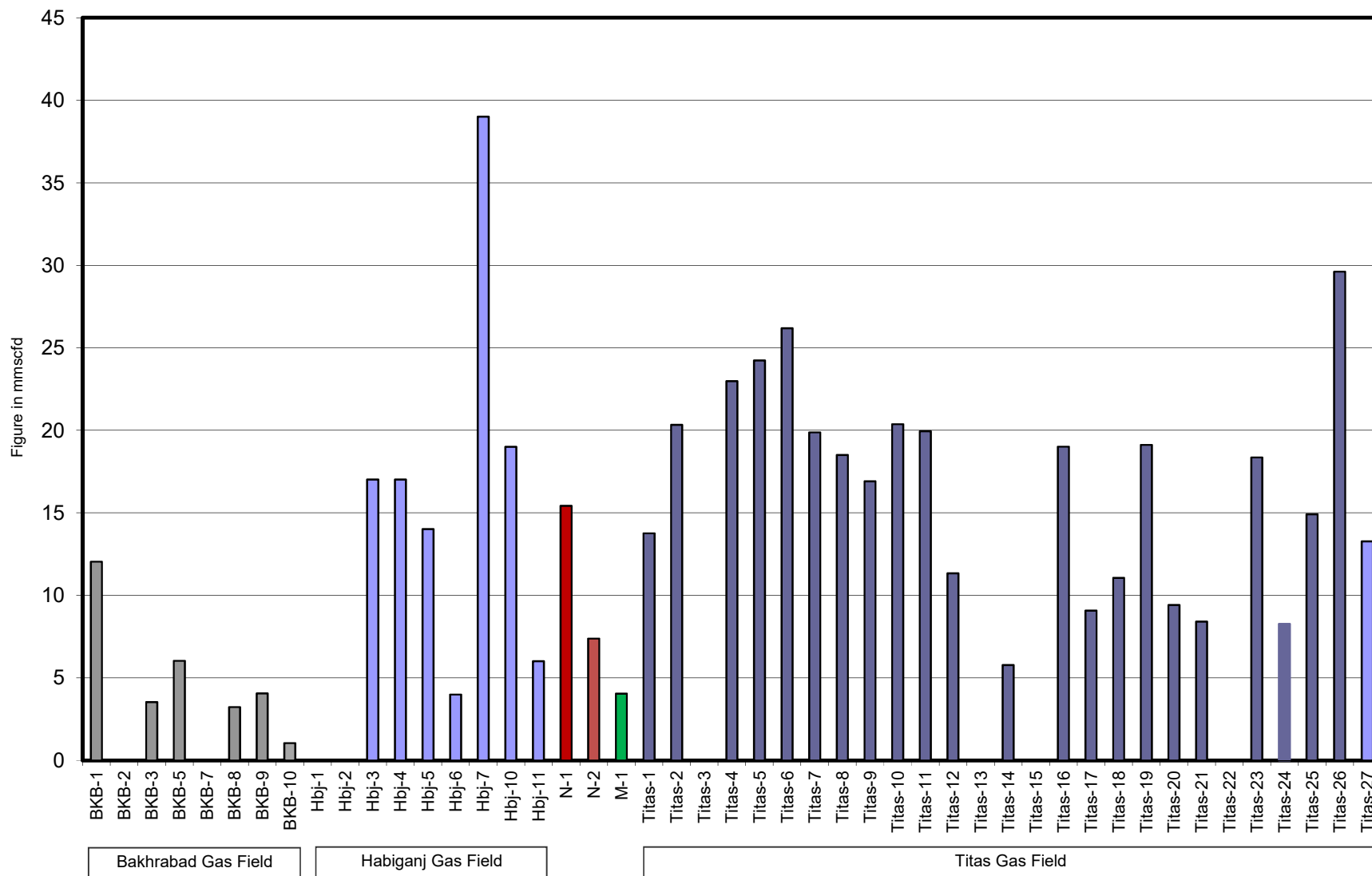


Figure in mmcf
and % of total production

Wellwise Daily Avg. Production- BGFCL June 2024

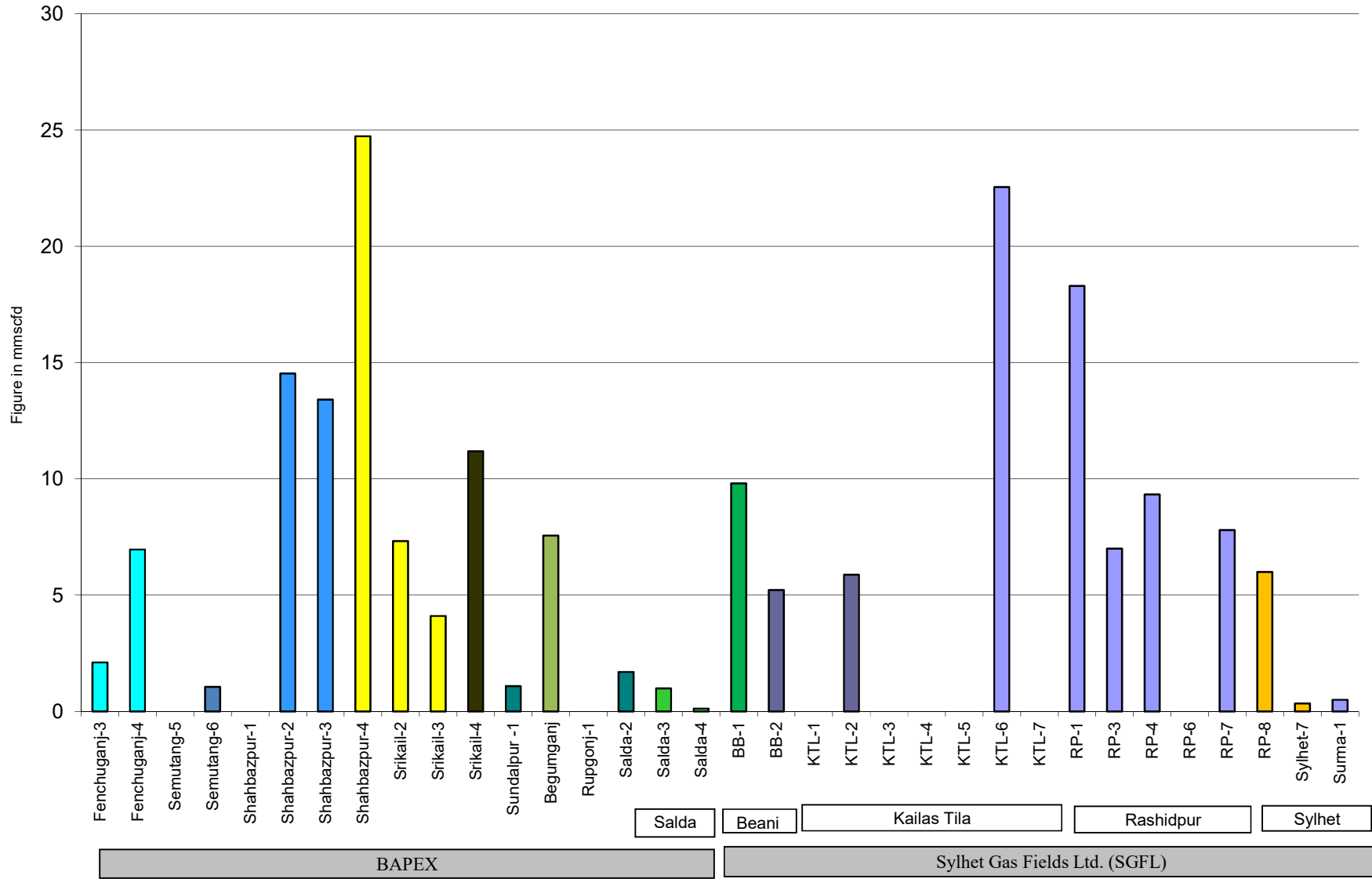


Bakhrabad Gas Field

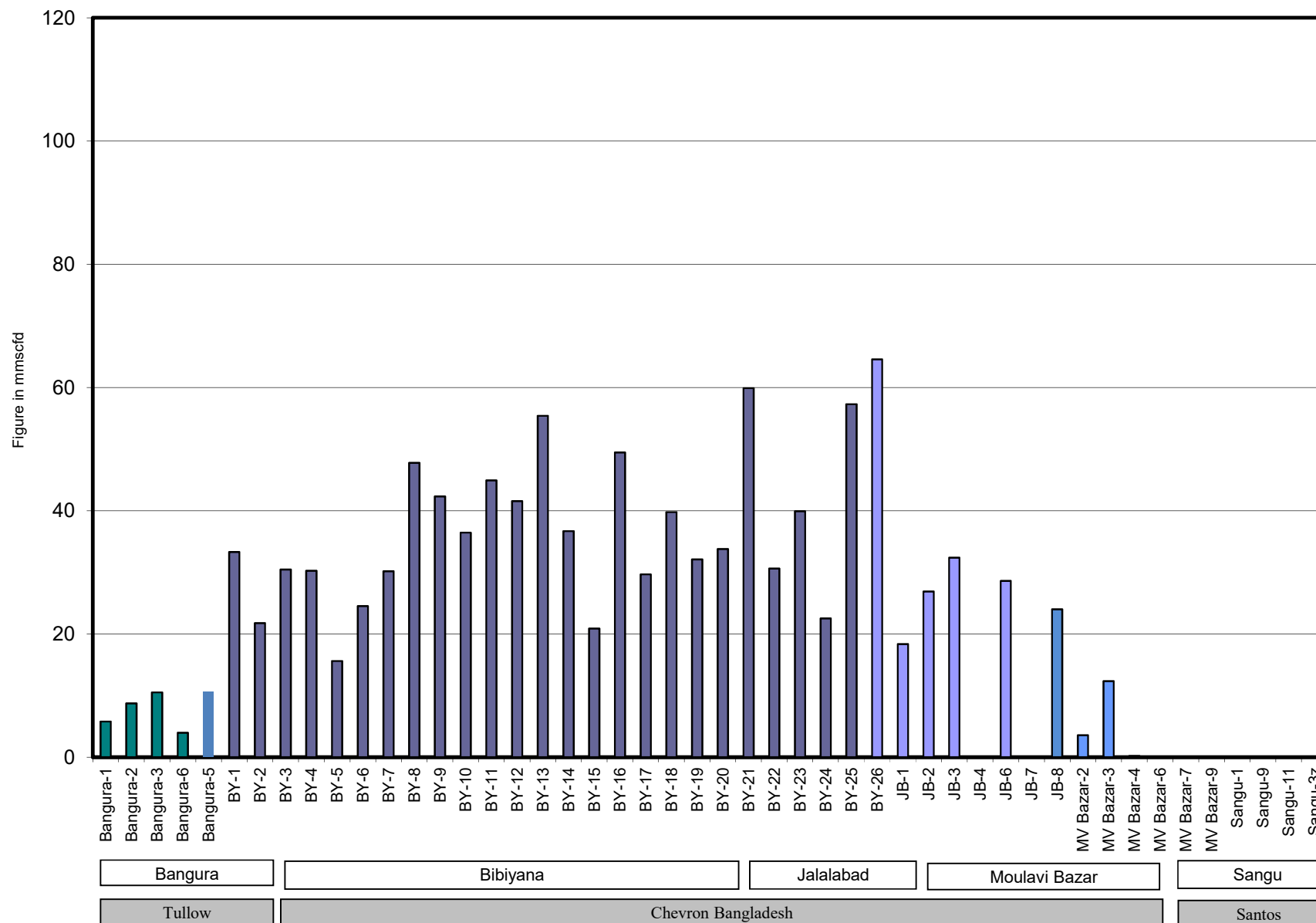
Habiganj Gas Field

Titas Gas Field

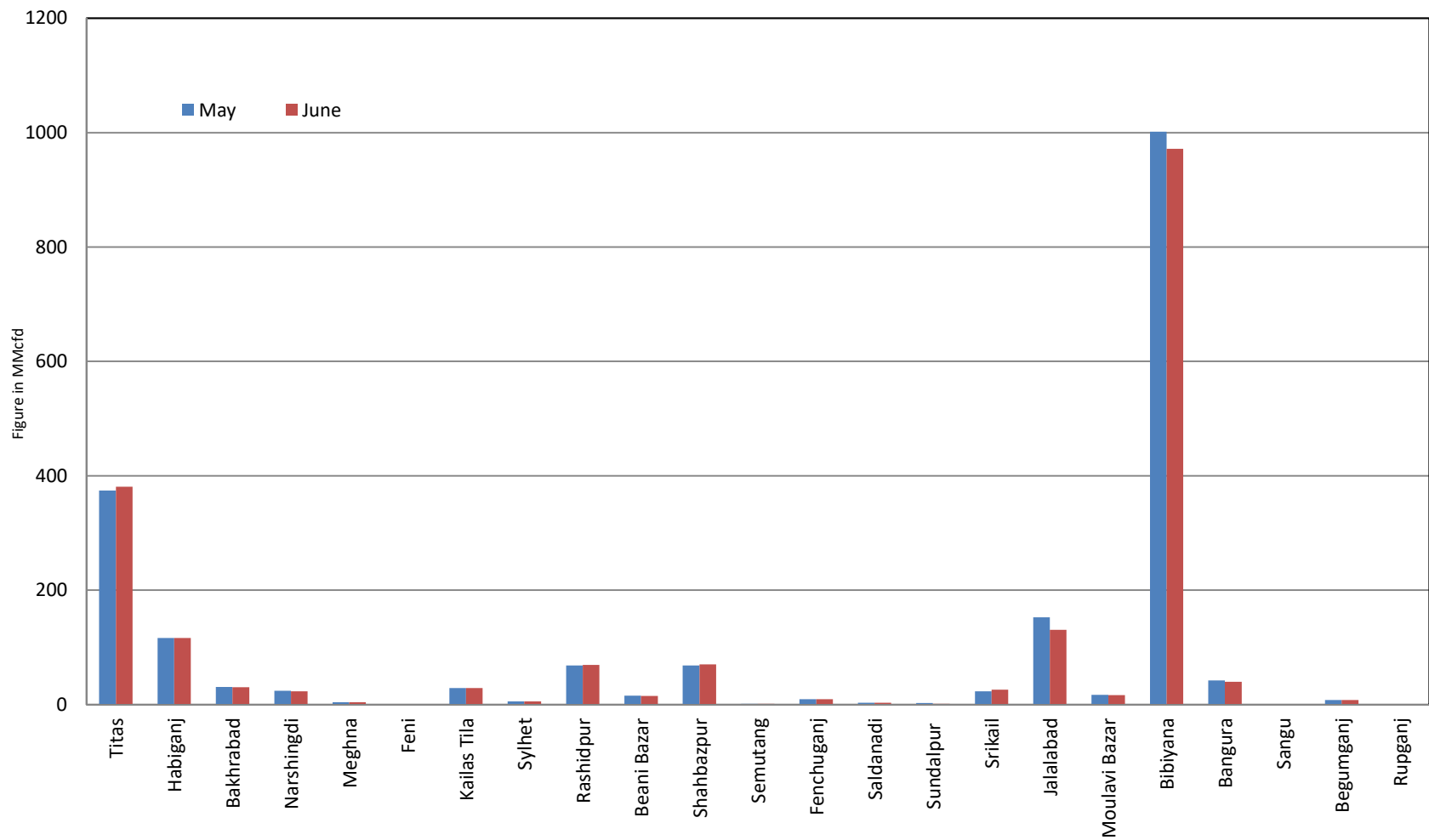
Wellwise Daily Avg. Production- Bapex and SGFL June 2024



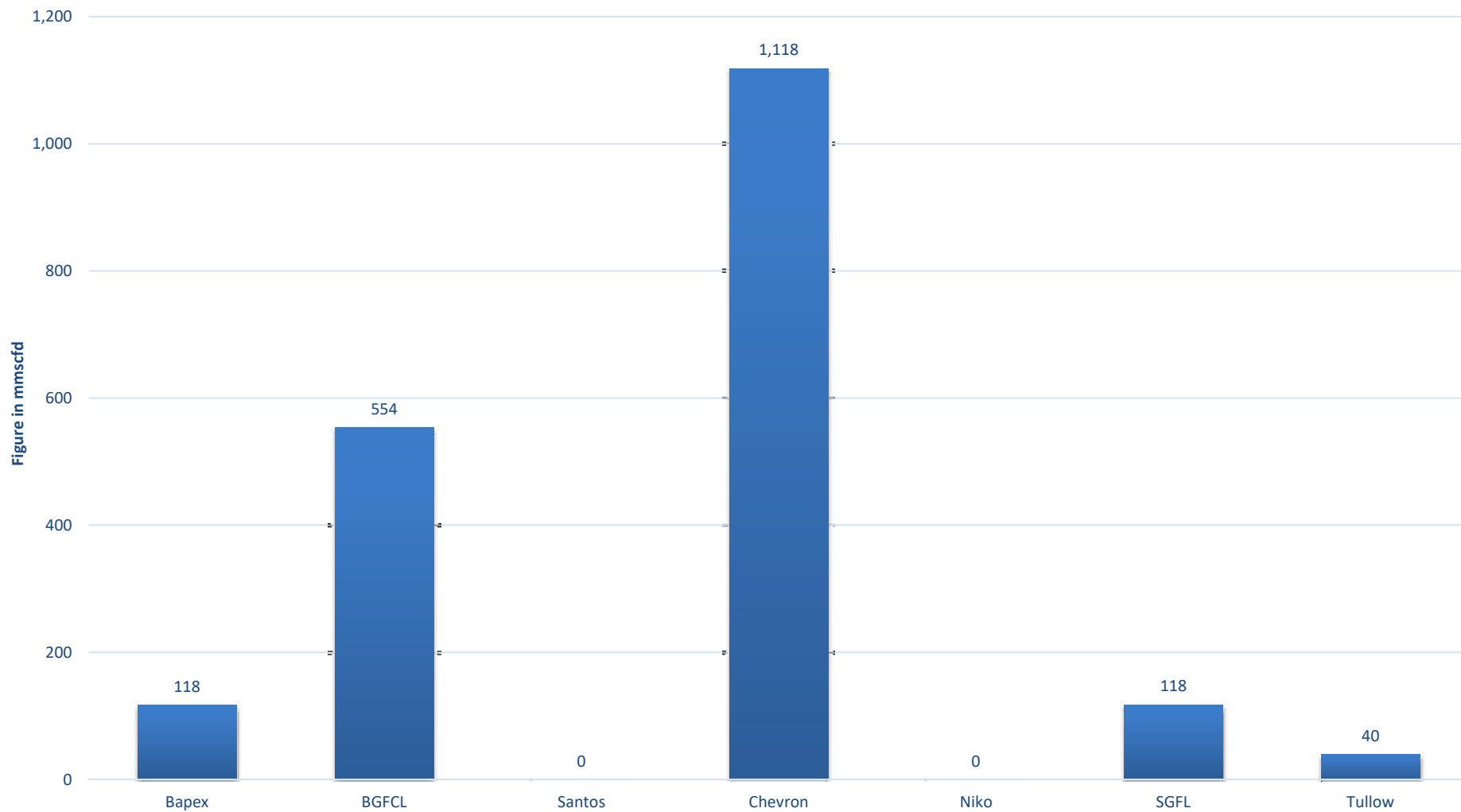
Wellwise Daily Avg. Production- IOC and JVA June 2024



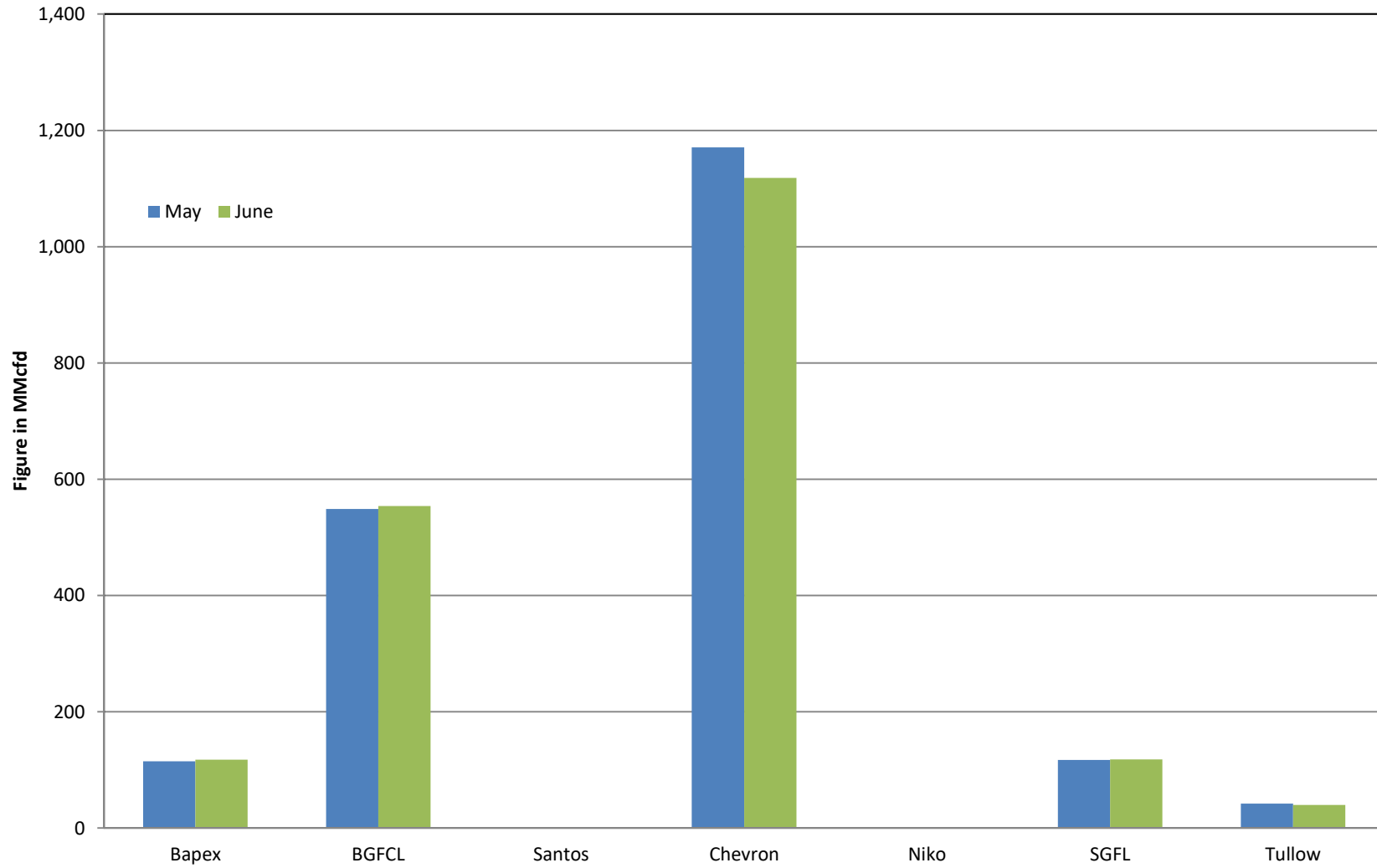
Comparison of fieldwise daily avg. Gas production between May 2024 & June 2024



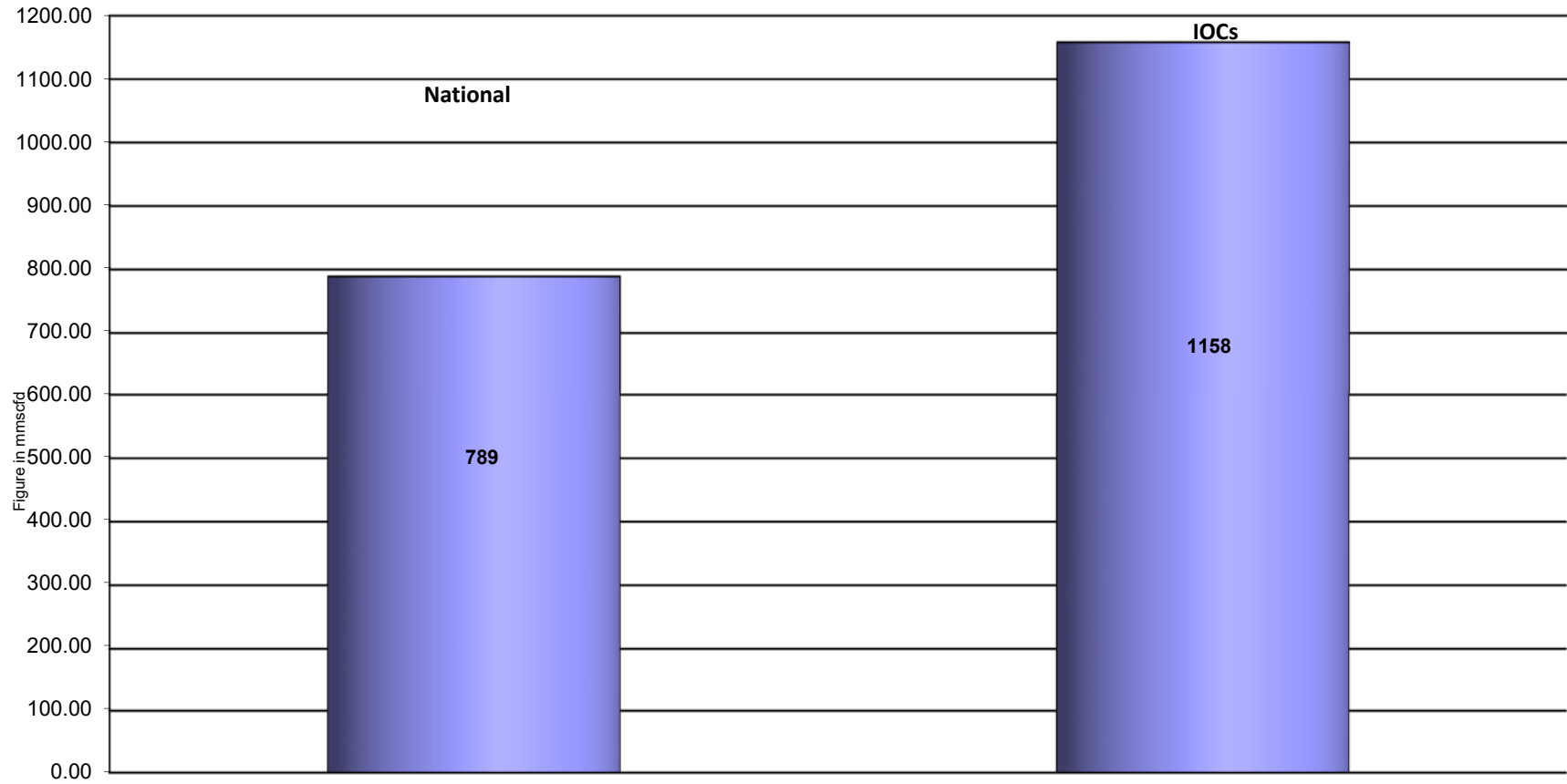
Daily Avg. Production by Operators June 2024



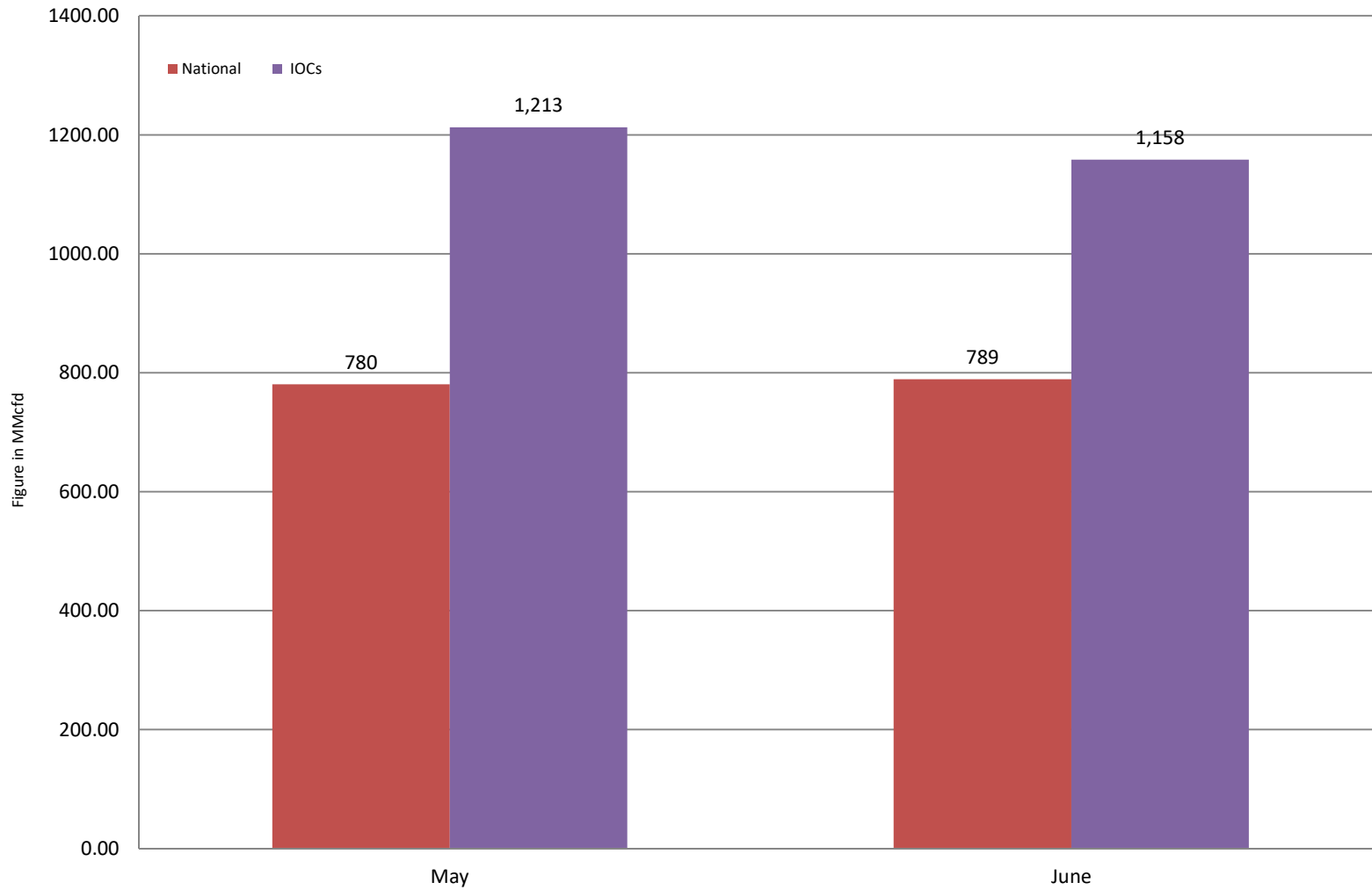
Comparison of operatorwise daily avg. Gas production between May 2024 & June 2024



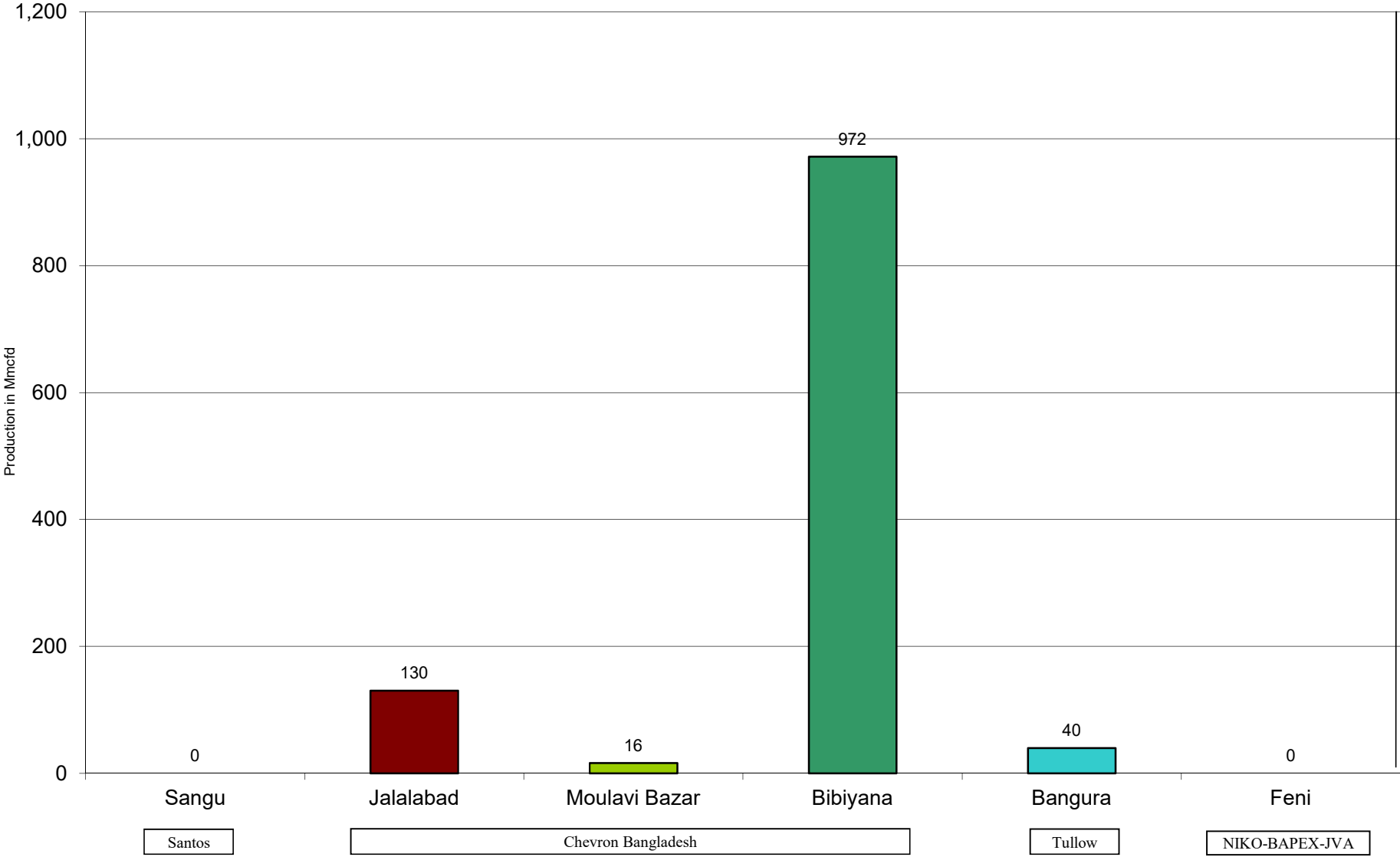
Daily Avg. Production - National Vs. IOCs June 2024



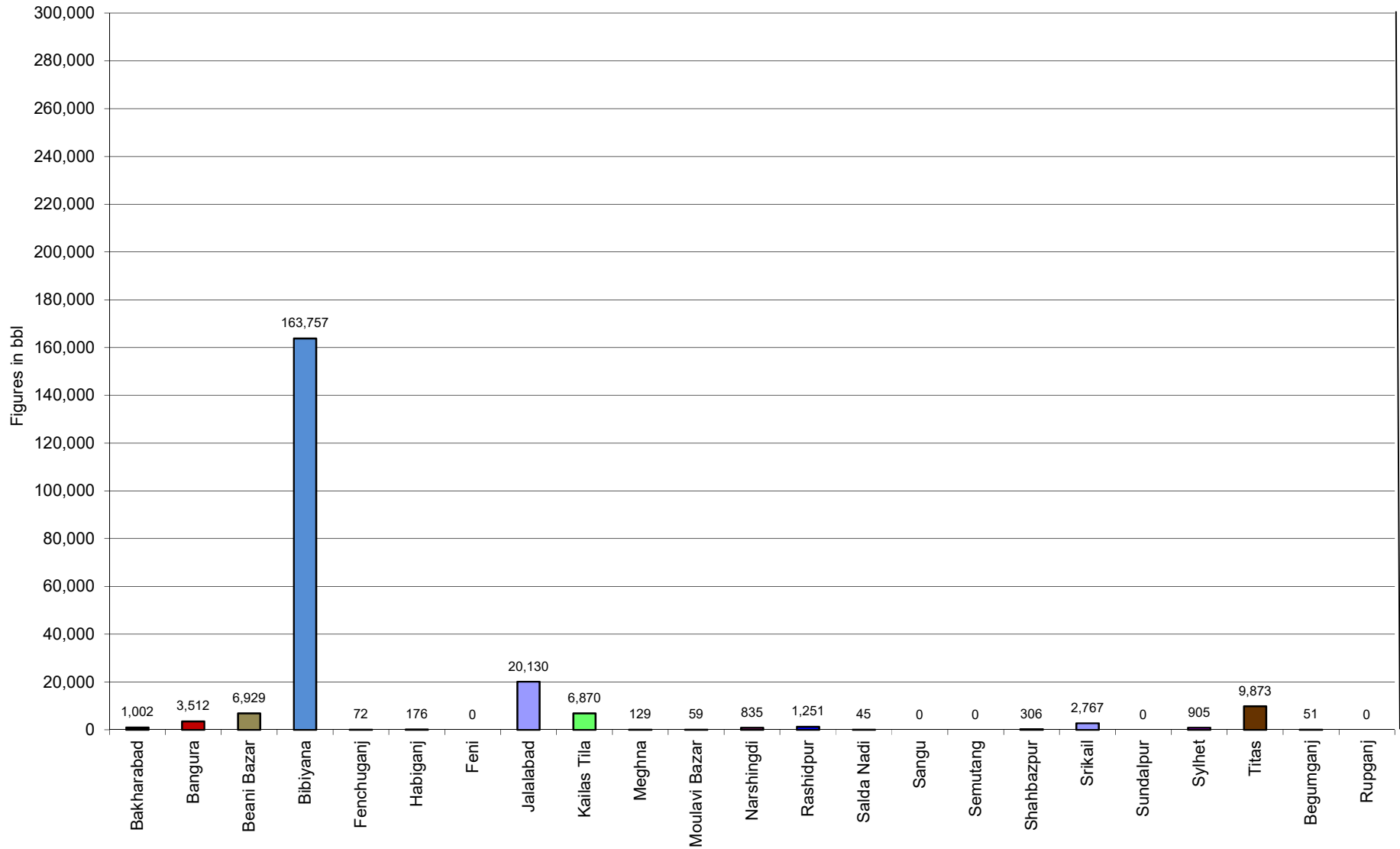
Comparison of daily avg. Gas production - National vs IOC's between May 2024 & June 2024



Daily Avg. Production - IOC and JVA June 2024



Monthly Condensate Production June 2024



Field wise Coal Reserve in Bangladesh

SI No.	Coal Basins	Proved (Mt)	Indicated (Mt)	Inferred (Mt)	Total (Mt)
1	Barapukuria	114.32	211.33	21.06+(43-64)*	346.71+(43-64)*
2	Phulbari	288	226	58	572
3	Khalashpir	-	297.57	225.92	523.49
4	Jamalganj	-	-	1053.9	1053.9
5	Dighipara	-	105	495	600
	Total	402.32	839.9	1896.88-1917.88	3139.10-3160.10

**Resources of VI Seam in second syncline are towards SW of main basin, after Wardell Armstrong*

NOTE: Reserve Figure based on Coal Sector Development Strategy (Final), HCU, PwC

Summary of Reserve and Production of Barapukuria Coal Mine As of June 2024

Coal Initially Place (Proven + Probable)	346,710 kT	346.71 MT
Total Reserve of Seam VI	285,410 kT	285.41 MT
Recoverable from Seam VI Central part(Proven + Probable)	16,540 kT*	16.54 MT
Coal Production in June 2024	83.83 kT	0.08 MT
Cumulative Production as of June 2024	14,424 kT	14.42 MT
Remaining Reserve	2,116 kT	2.12 MT

NOTE: Reserve figure based on Mines and Minerals Development Report ,HCU PwC

*Figure from BCMCL, M/S Wardell Armstrong. According to Mines and Minerals Development Report ,HCU, PwC this figure is 64.8 Mt

Barapukuria Coal Mine-MPM and P Contract (BCMCL)

Measurement Record: Surface Belt Weigher

Measurement Period: June 2024

Day wise data	Consortium Daily Output (ton)	Consortium Cumulative Total	BCMCL Daily Output	BCMCL Cumulative Total	Remarks
1-Jun-2024	2,620.02	2,620.02	2,620.02	2,620.02	
2-Jun-2024	2,119.06	4,739.08	2,119.06	4,739.08	
3-Jun-2024	3,078.00	7,817.08	3,078.00	7,817.08	
4-Jun-2024	2,645.91	10,462.98	2,645.91	10,462.98	
5-Jun-2024	2,682.49	13,145.47	2,682.49	13,145.47	
6-Jun-2024	3,128.97	16,274.44	3,128.97	16,274.44	
7-Jun-2024	2,892.01	19,166.45	2,892.01	19,166.45	
8-Jun-2024	3,963.87	23,130.32	3,963.87	23,130.32	
9-Jun-2024	4,728.96	27,859.28	4,728.96	27,859.28	
10-Jun-2024	4,498.40	32,357.68	4,498.40	32,357.68	
11-Jun-2024	3,719.87	36,077.55	3,719.87	36,077.55	
12-Jun-2024	4,109.12	40,186.67	4,109.12	40,186.67	
13-Jun-2024	4,855.00	45,041.67	4,855.00	45,041.67	
14-Jun-2024	2,963.87	48,005.54	2,963.87	48,005.54	
15-Jun-2024	4,637.29	52,642.83	4,637.29	52,642.83	
16-Jun-2024	4,329.12	56,971.95	4,329.12	56,971.95	
17-Jun-2024	1,903.07	58,875.02	1,903.07	58,875.02	
18-Jun-2024	1,810.56	60,685.59	1,810.56	60,685.59	
19-Jun-2024	4,239.61	64,925.19	4,239.61	64,925.19	
20-Jun-2024	3,048.09	67,973.28	3,048.09	67,973.28	
21-Jun-2024	4,662.49	72,635.77	4,662.49	72,635.77	
22-Jun-2024	3,973.69	76,609.46	3,973.69	76,609.46	
23-Jun-2024	3,175.50	79,784.95	3,175.50	79,784.95	
24-Jun-2024	2,437.69	82,222.64	2,437.69	82,222.64	
25-Jun-2024	1,419.72	83,642.36	1,419.72	83,642.36	
26-Jun-2024	1,573.46	85,215.82	1,573.46	85,215.82	
27-Jun-2024	1,969.85	87,185.67	1,969.85	87,185.67	
28-Jun-2024	1,334.05	88,519.72	1,334.05	88,519.72	
29-Jun-2024	931.00	89,450.72	931.00	89,450.72	
30-Jun-2024	992.25	90,442.97	992.25	90,442.97	

Adjustable coal for scale calibration	-120.31
Total Output	90,322.65
Deduction for scrap	0
Less Difference in water content	6492.53
Less out of seam Dilution	0.00
Net Output	83,830.12

Barapukuria Coal Mine Daywise Data Graph for June 2024

