



Gas Production & Depletion And Coal Production

February 2019



Gas Reserve & Production at a glance

Gas Initially in Place (GIIP)	:	35,796.19 Bcf
Recoverable (2P)	:	28,685.40 Bcf
Cumulative Production as of February 2019	:	16,615.36 Bcf
Remaining Reserve up to February 2019	:	12,070.04 Bcf
Gas Production in February 2019	:	72.98 Bcf
National Oil Company (NOC's) production in February 2019	:	29.01 Bcf
International Oil Company (IOC's) production in February 2019	:	43.97 Bcf
No. of National Oil Company (NOC's) in February 2019	:	3 (BGFCL, BAPLEX, SGFL)
No. of International Oil Company (IOC's) in February 2019	:	2 (Chevron, Tullow)
Total gas fields of National Oil Company(NOC) in February 2019	:	21
Total gas fields of International Oil Company(IOC) in February 2019	:	5
Total gas wells of National Oil Company(NOC) in February 2019	:	116
Total gas wells of International Oil Company(IOC) in February 2019	:	60
No. of National Oil Company (NOC's) gas production well in February 2019	:	66
No. of International Oil Company (IOC's) gas production well in February 2019	:	44
No. of National Oil company(NOC's) suspended well in February 2019	:	50
No. of International Oil company(IOC's) suspended well in February 2019	:	16

Executive Summary of February 2019

Total gas and condensate Production in February 2019 were 72.98 Bcf and 320,371.90 Bbl. In the previous month i.e. January 2019, gas and condensate production was 83.29 Bcf and 370,345 Bbl and in the same month of the previous year i.e. February 2018, total gas and condensate production was 67.48 Bcf and 343,617 Bbl respectively. The National Oil Companies (NOC's) and International Oil Companies (IOC's) Produced 29.01 Bcf and 43.97 Bcf gas respectively in February 2019. During the previous month i.e. January 2019 gas production by the National Oil Companies (NOC's) and International Oil Companies (IOC's) were 32.76 Bcf and 50.53 Bcf respectively. In the month of February 2019 Bibiyana gas field Produced 35.12 Bcf gas and it ranked top among the gas producers. It is noted that Bibiyana gas field Produced 34.96 Bcf in January 2019. Average production from the field during the month of February 2019 was 1249 Mmcfd.

During the month of February 2019 total production of condensate was 320,371.90 Bbl compared to 370,345 Bbl in the previous month i.e. January 2019. Bibiyana gas field Produced 247,882 Bbl condensate and ranked top while Jalalabad ranked 2nd by producing 23,874 Bbl.

The month of February 2019 total coal production was 1,455.51 Ton. In the previous month i.e. January 2019 total coal production was 21,896.47 Ton. It indicates that 20,441 Ton less Coal was produced compared to previous month.

Table of Contents

Gas Report	Page No.
Summary	1
summary of Reserve and Production	2
Production comparison between January 2019 & February 2019	3
Probable Yearwise Production of GAS	4
Probable Year wise Remaining GAS	5
Production per well & production reserve ratio	6
Monthly Production by Fields & Wells up to February 2019	7-14
Monthly Condensate Production by Fields up to February 2019	15-16
Monthly Water Production by Fields from February 2019	17-18
Conditions of Field and Well up to February 2019	19-23
Chart	
Well-wise Production of All fields in 2017-18	24
Reserve, Production and Remaining Reserve as of February 2019	25
Daily Average Gas Production from January 2012 to February 2019	26
Field wise Daily Average Production as of February 2019	27
Well wise Daily Average Production-BGFCL as of February 2019	28
Well wise Daily Average Production-BAPEX and SGFL, February 2019	29
Well wise Daily Average Production-IOC and JVA, February 2019	30
Comparison of Field wise Daily Avg Gas Production between Jan 19 & Feb 19	31
Daily Average Production by Operator, February 2019	32
Comparison of Operator wise daily avg Production between January 19 & February 19	33
Daily Average Production – National vs IOC’s, February 2019	34
Comparison of daily avg Gas Production- National vs IOC’s between January 19 & February 19	35
Daily Average Production IOC’s and JVA, February 2019	36
Monthly Condensate Production, February 2019	37
Coal Report	
Summary	38-39
Barapukuria Coal Mine-MPM and P Contract (BCMCL)	40
Barapukuria Coal Mine Day wise Data Graph for February 2019	41

Summary of Reserve and Production As of 28 February 2019

Gas Initially Place (Proven + Probable)	35,796.19 Bcf	35.80 Tcf
Recoverable (Proven + Probable)	28,685.40 Bcf	28.69 Tcf
Gas Production in February 2019	72.98 Bcf	0.07 Tcf
Cumulative Production as of February 2019	16,615.36 Bcf	16.62 Tcf
Remaining Reserve	12,070.04 Bcf	12.07 Tcf

NOTE: Reserve figure based on "Updated Report on Bangladesh Gas Reserve Estimation 2010", prepared by Gustavson Associates LLC, USA

Summary of Reserve and Production

(As of February 2019)

Gas Bcf



SI No.	Field	2P	GIIP	2P Reserve	Gas Prod. In February '18	Cum. Gas Production	Remaining Reserve	Cum. Condensate Production
1	Begumganj		47.0	33.0	0.2	1.8	31.2	0
2	Shahbazpur		415.0	261.0	1.4	60.6	200.4	7
3	Semutang		654.0	318.0	0.0	13.1	304.9	5
4	Fenchuganj		483.0	329.0	0.2	158.6	170.4	115
5	Salda Nadi		393.0	275.0	0.1	91.3	183.7	58
6	Srikail*		230.0	161.0	1.0	83.3	77.7	134
7	Sundalpur *		62.2	50.2	0.2	12.4	37.8	0
8	Rupganj		48.0	33.6	0.0	0.7	32.9	1
Bapex			2,332.2	1,460.8	3.2	421.9	1,038.9	321
9	Meghna		122.0	101.0	0.3	69.7	31.3	108
10	Narshingdi		405.0	345.0	0.8	201.6	143.4	420
11	Kamta		72.0	50.0	0.0	21.1	28.9	4
12	Habiganj		3,981.0	2,787.0	6.0	2,441.5	345.5	131
13	Bakhrabad		1,825.0	1,387.0	0.8	813.8	573.2	1,021
14	Titas		9,039.0	7,582.0	13.9	4,681.5	2,900.5	5,249
BGFCL			15,444.0	12,252.0	21.8	8,229.2	4,022.8	6,934
15	Sangu		976.0	771.0	0.0	489.5	281.5	37
Santos/Cairn			976.0	771.0	0.0	489.5	281.5	37
16	Bibiyana		5,321.0	4,532.0	35.1	3,669.0	863.0	21,689
17	Moulavi Bazar		630.0	494.0	0.5	323.5	170.5	117
18	Jalalabad**		1,346.0	1,346.0	6.2	1,291.2	54.8	10,193
Chevron			7,297.0	6,372.0	41.8	5,283.6	1,088.4	31,999
19	Feni		185.0	130.0	0.0	63.0	67.0	110
Niko			185.0	129.6		63.0	66.6	110
20	Kailas Tila		3,463.0	2,880.0	1.8	730.5	2,149.5	7,829
21	Sylhet		580.0	408.0	0.1	214.5	193.5	797
22	Rashidpur		3,887.0	3,134.0	1.4	630.7	2,503.3	778
23	Chattak		677.0	474.0	0.0	25.8	448.2	4
24	Beani Bazar		225.0	137.0	0.2	95.7	41.3	1,575
SGFL			8,832.0	7,033.0	3.6	1,697.3	5,335.7	10,984
25	Bangura		730.0	621.0	2.7	430.9	190.1	1,083
Tullow			730.0	621.0	2.7	430.9	190.1	1,083
26	Kutubdia		65.0	46.0	0.0	0.0	46.0	0
Total			35,796.2	28,685.4	72.98	16,615.4	12,070.0	51,468

* Preliminary reserve estimated by BAPEX

** 2P reserve estimation by Petrobangla has crossed the limit. So 2P reserve is estimated as GIIP reserve now.

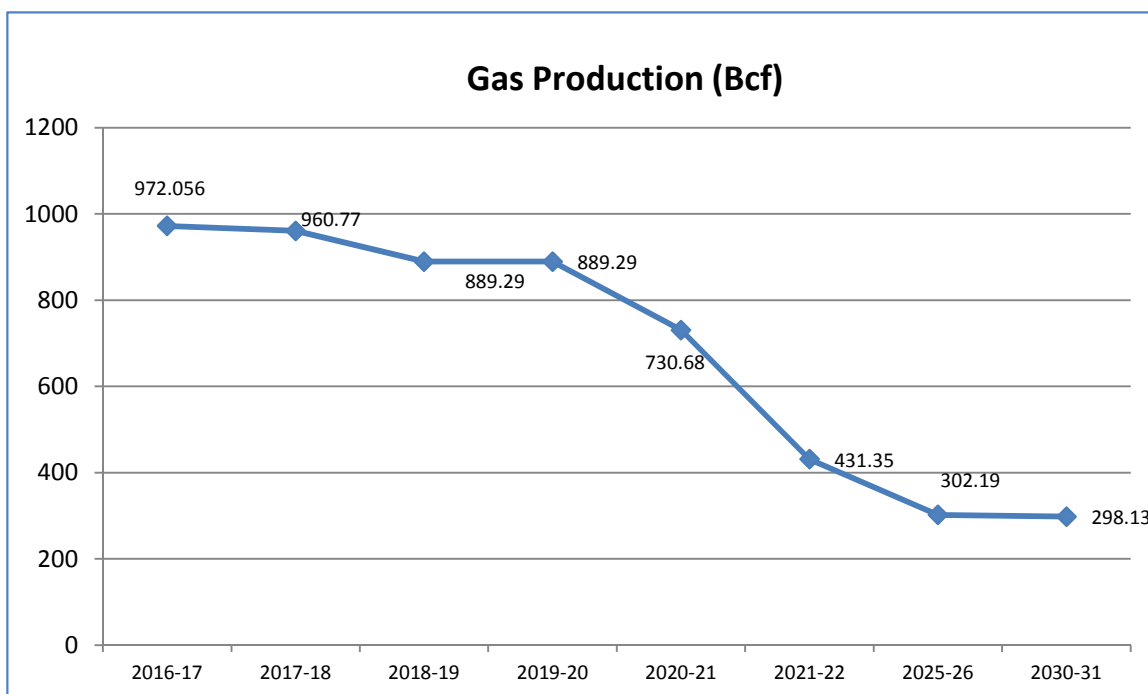
Production comparison between January'19 & February'19



SI No.	Field	Gas Prod. (MMcf) in January'19	Daily Avg. (MMcfd) in January'19	Gas Prod. (MMcf) in February'19	Daily Avg. (MMcfd) in February'19
1	Begumganj	176	6	179	6
2	Shahbazpur	1424	46	1411	50
3	Semutang	22	1	23	1
4	Fenchuganj	334	11	234	8
5	Salda Nadi	127	4	124	4
6	Srikail	1076	35	1005	36
7	Sundalpur	220	7	200	7
8	Rupganj	0	0	0	0
Bapex		3379	109	3175	113
9	Meghna	372	12	308	11
10	Narshingdi	844	27	757	27
11	Kamta	0	0	0	0
12	Habiganj	6776	219	5985	214
13	Bakhrabad	852	27	807	29
14	Titas	15838	511	13893	496
BGFCL		24682	796	21751	777
15	Sangu	0	0	0	0
Santos/Cairn		0	0	0	0
16	Bibiyana	40006	1291	35117	1254
17	Moulavi Bazar	682	22	511	18
18	Jalalabad	7482	241	6158	220
Chevron		48171	1554	41787	1492
19	Feni	0	0	0	0
Niko		0	0	0	0
20	Kailas Tila	2017	65	1787	64
21	Sylhet	131	4	108	4
22	Rashidpur	1597	52	1439	51
23	Chattak	0	0	0	0
24	Beani Bazar	274	9	239	9
SGFL		4018	130	3573	128
25	Bangura	3044	98	2690	96
Tullow		3044	98	2690	96
26	Kutubdia	0	0	0	0
		0	0	0	0
Total		83294	2687	72975	2606

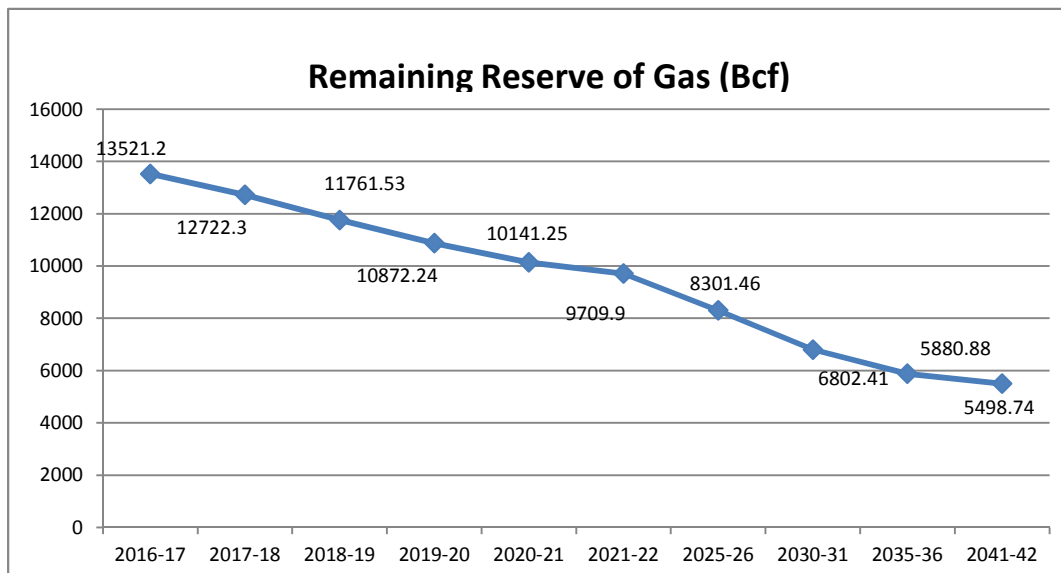
Probable Yearwise Production of GAS

	Total 2P Reserve	Cumulative Production	production									
			2016-17	2017-18	2018-19	2019-20	2020-21	2021-22	2025-26	2030-31	2035-36	2041-42
Titas	7582	4556.6	191.13	195.42	195.42	195.42	195.42	195.42	195.42	195.42	0	0
Habiganj	2787	2386.8	81.17	79.9	79.9	79.9	79.9	79.9				
kamta	50	21.1	0	0		0	0	0	0	0	0	0
Bakhrabad	1387	806.9	14.26	12.02	12.02	12.02	12.02	12.02	12.02	12.02	12.02	12.02
Narshingdi	345	195	10.32	10.02	10.02	10.02	10.02	10.02	10.02	10.02		
Meghna	101	66.7	4.43	4.62	4.62	4.62	4.62	4.62	1.96			
Feni	130	63	0	0	0	0	0	0	0	0	0	0
Kailas Tila	2880	715	23.72	22.96	22.96	22.96	22.96	22.96	22.96	22.96	22.96	22.96
Sylhet	408	213.5	2.8	1.79	1.79	1.79	1.79	1.79	1.79	1.79	1.79	1.79
Rashidpur	3134	618.1	20.61	19.51	19.51	19.51	19.51	19.51	19.51	19.51	19.51	19.51
Chattak	474	25.8	0	0	0							
Beani Bazar	137	93.6	4.19	3.5	3.5	3.5	3.5	3.5	3.5	1.4		
Shahbazzpur	261	47.5	9.78	15.26	15.26	15.26	15.26	15.26	15.26	15.26		
Semutang	318	12.9	0.78	0.46	0.46	0.46	0.46	0.46	0.46	0.46	0.46	0.46
Fenchuganj	329	156.1	8.77	4.7	4.7	4.7	4.7	4.7	4.7	4.7	4.7	4.7
Saldanadi	275	90.3	1.89	1.06	1.06	1.06	1.06	1.06	1.06	1.06	1.06	1.06
Sundalpur	50.2	10.7	0	0.94	0.94	0.94	0.94	0.94	0.94	0.94	0.94	0.94
Srikail	161	75.1	14.99	12.93	12.93	12.93	12.93	12.93	0			
Jalalabad	1346	1233.3	96.81	92.09	20.61	20.61						
Moulavi Baz	494	317.3	13.71	12.34	12.34	12.34	12.34	12.34	12.34	12.34		
Bibiyana	4532	3357.7	437.17	437.33	437.33	437.33	299.33					
Bangura	621	409.4	35.09	33.67	33.67	33.67	33.67	33.67				
Sangu	771	489.5	0	0	0	0	0	0				
Begumganj	33	0.9	0.006	0	0	0	0	0				
Rupganj	33.6	0.7	0.43	0.25	0.25	0.25	0.25	0.25	0.25	0.25	0.25	0.25
Kutubdia	46	0	0	0	0							
	28685.8	15963.5	972.056	960.77	889.29	889.29	730.68	431.35	302.19	298.13	63.69	63.69



Probable Year wise Remaining GAS

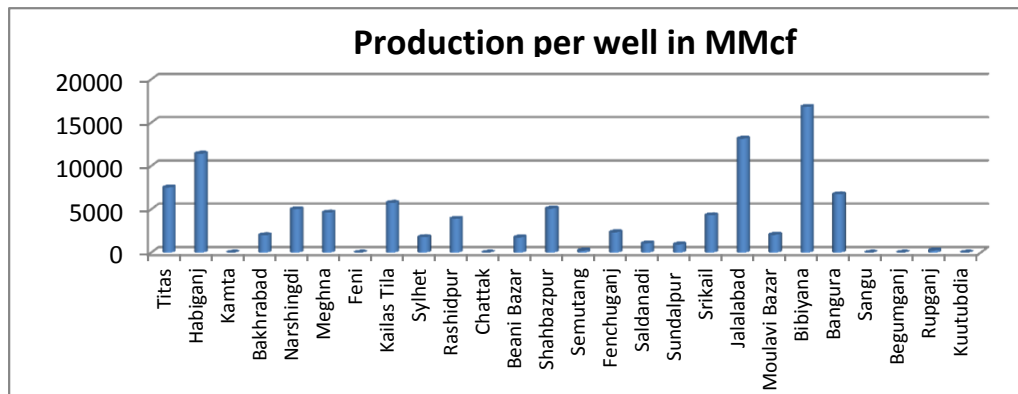
	Total 2p Reserve	Cumulative production	Remaining									
			2016-17	2017-18	2018-19	2019-20	2020-21	2021-22	2025-26	2030-31	2035-36	2041-42
Titas	7582	4556.6	3220.8	3025.4	2829.98	2634.56	2439.14	2243.72	1462.04	484.94	0	0
Habiganj	2787	2386.8	480.1	400.2	320.3	240.4	160.5	80.6			0	0
kamta	50	21.1	28.9	28.9	28.9	28.9	28.9	28.9	28.9	28.9	28.9	28.9
Bakhrabad	1387	806.9	592.1	580.1	568.08	556.06	544.04	532.02	483.94	423.84	363.74	291.62
Narshingdi	345	195	160	150	139.98	129.96	119.94	109.92	69.84	19.74	0	0
Meghna	101	66.7	38.9	34.3	29.68	25.06	20.44	15.82	0	0	0	0
Feni	130	63	67	67	67	67	67	67	67	67	0	0
Kailas Tila	2880	715	2188	2165	2142.04	2119.08	2096.12	2073.16	1981.32	1866.52	1751.72	1613.96
Sylhet	408	213.5	196.3	194.5	192.71	190.92	189.13	187.34	180.18	171.23	162.28	151.54
Rashidpur	3134	618.1	2535.4	2515.9	2496.39	2476.88	2457.37	2437.86	2359.82	2262.27	2164.72	2047.66
Chattak	474	25.8	448.2	448.2	448.2	448.2	448.2	448.2	448.2	448.2	448.2	448.2
Beani Bazar	137	93.6	46.9	43.4	39.9	36.4	32.9	29.4	15.4	0	0	0
Shahbazpur	261	47.5	228.8	213.5	198.24	182.98	167.72	152.46	91.42	15.12	0	0
Semutang	318	12.9	305.6	305.1	304.64	304.18	303.72	303.26	301.42	299.12	296.82	294.06
Fenchuganj	329	156.1	177.6	172.9	168.2	163.5	158.8	154.1	135.3	111.8	88.3	60.1
Saldanadi	275	90.3	185.7	184.7	183.64	182.58	181.52	180.46	176.22	170.92	165.62	159.26
Sundalpur	50.2	10.7	40.4	39.5	38.56	37.62	36.68	35.74	31.98	27.28	22.58	16.94
Srikail	161	75.1	98.9	85.9	72.97	60.04	47.11	34.18	0	0	0	0
Jalalabad	1346	1233.3	42.8	112.7	20.61	0	0	0	0	0	0	0
Moulavi Baz	494	317.3	189.1	176.7	164.36	152.02	139.68	127.34	77.98	16.28	0	0
Bibiyana	4532	3357.7	1611.7	1174.3	736.97	299.64	0	0	0	0	0	0
Bangura	621	409.4	245.2	211.6	177.93	144.26	110.59	76.92	0	0	0	0
Sangu	771	489.5	281.5	281.5	281.5	281.5	281.5	281.5	281.5	281.5	281.5	281.5
Begumganj	33	0.9	32.1	32.1	32.1	32.1	32.1	32.1	32.1	32.1	32.1	32.1
Rupganj	33.6	0.7	33.2	32.9	32.65	32.4	32.15	31.9	30.9	29.65	28.4	26.9
Kutubdia	46	0	46	46	46	46	46	46	46	46	46	46
Total	28685.8	15963.5	13521.2	12722.3	11761.5	10872.2	10141.3	9709.9	8301.46	6802.41	5880.88	5498.74



Production per well & production reserve ratio



	No of well	Total 2p- Recoverable	2017-18 production	production per well mmcf	production reserve ratio
Titas	26	7582	195.42	7516.15	0.026
Habiganj	7	2787	79.9	11414.29	0.029
Kamta	0	50	0	0.00	0.000
Bakhrabad	6	1387	12.02	2003.33	0.009
Narshingdi	2	345	10.02	5010.00	0.029
Meghna	1	101	4.62	4620.00	0.046
Feni	0	130	0	0.00	0.000
Kailas Tila	4	2880	22.96	5740.00	0.008
Sylhet	1	408	1.79	1790.00	0.004
Rashidpur	5	3134	19.51	3902.00	0.006
Chattak	0	474	0	0.00	0.000
Beani Bazar	2	137	3.5	1750.00	0.026
Shahbazpur	3	261	15.26	5086.67	0.058
Semutang	2	318	0.46	230.00	0.001
Fenchuganj	2	329	4.7	2350.00	0.014
Saldanadi	1	275	1.06	1060.00	0.004
Sundalpur	1	50.2	0.94	940.00	0.019
Srikail	3	161	12.93	4310.00	0.080
Jalalabad	7	1346	92.09	13155.71	0.068
Moulavi Bazar	6	494	12.34	2056.67	0.025
Bibiyana	26	4532	437.33	16820.38	0.096
Bangura	5	621	33.67	6734.00	0.054
Sangu	0	771	0	0.00	0.000
Begumganj	0	33	0	0.00	0.000
Rupganj	1	33.6	0.25	250.00	0.007
Kuutubdia	0	46	0	0.00	0.000
Total	111	28685.8	960.77	8655.59	0.033



Monthly Production by Field and Well upto February- 2019



HYDROCARBON UNIT

Energy & Mineral Resources Division

Figures in mmscf

Well	Jan	Feb	Mar	Apr	May	Jun	Jul	Aug	Sep	Oct	Nov	Dec	Total	Cumulative	2018	2017	2016
Field : Bakharabad																	
BKB-1	0	0											0	141,167	0	0	0
BKB-2	34	32											67	86,637	445	543	731
BKB-3	154	151											306	161,151	1,989	2,249	2,223
BKB-4	0	0												55,872			
BKB-5	155	140											296	59,107	1,822	1,847	1,814
BKB-6	0	0											0	50,069	0		
BKB-7	0	0											0	107,750	0	0	0
BKB-8	158	170											329	126,589	2,017	3,462	4,142
BKB-9	251	229											481	21,603	3,332	3,637	4,160
BKB-10	98	84											182	3,856	1,297	1,453	924
Field Total:	852	807	0	0	0	0	0	0	0	0	0	0	1,659	813,800	10,903	13,190	13,070
Daily Avg.(mmscfd)	27	29	0	0	0	0	0	0	0	0	0	0	28		30	36	36
Field : Bangura																	
Bangura-1	384	343											727	89,982	4,615	4,914	4,886
Bangura-2	504	437											941	80,479	6,802	7,837	9,200
Bangura-3	601	516											1,117	97,844	7,265	8,662	10,038
Bangura-6	343	306											649	9,596	4,847	4,100	
Bangura-5	1,212	1,087											2,299	153,042	8,410	9,699	11,514
Field Total:	3,044	2,690	0	0	0	0	0	0	0	0	0	0	5,734	430,943	31,940	35,212	35,639
Daily Avg.(mmscfd)	98	96	0	0	0	0	0	0	0	0	0	0	97		88	96	98
Field : Beani Bazar																	
BB-1	0	0											0	35,481	0	1,023	33
BB-2	274	239											514	60,250	3,276	3,282	3,431
Field Total:	274	239	0	0	0	0	0	0	0	0	0	0	514	95,731	3,276	4,306	3,464
Daily Avg.(mmscfd)	9	9	0	0	0	0	0	0	0	0	0	0	9		9	12	9
Field : Bibiyana																	
BY-1	2,554	2,149											4,703	372,588	21,743	35,595	35,050
BY-2	1,632	1,327											2,959	277,386	21,388	23,957	20
BY-3	737	608											1,345	236,614	6,249	9,904	16,873
BY-4	1,865	1,587											3,452	183,990	28,559	6,571	7,322
BY-5	762	698											1,460	173,427	6,131	8,117	9,229
BY-6	792	617											1,408	222,904	11,057	11,879	15,208
BY-7	2,548	2,171											4,719	249,302	23,155	32,874	33,040
BY-8	768	713											1,481	135,724	8,921	12,486	2,987
BY-9	553	482											1,035	125,652	4,093	6,247	6,820

Monthly Production by Field and Well upto February- 2019



HYDROCARBON UNIT
Energy & Mineral Resources Division

Figures in mmscf

Well	Jan	Feb	Mar	Apr	May	Jun	Jul	Aug	Sep	Oct	Nov	Dec	Total	Cumulative	2018	2017	2016
BY-10	2,106	1,752											3,858	338,855	30,954	32,967	33,582
BY-11	797	626											1,422	121,383	12,147	6,813	9,357
BY-12	2,162	2,177											4,339	127,042	6,835	8,284	10,574
BY-13	959	569											1,529	74,488	13,171	11,842	15,603
BY-14	800	730											1,529	92,143	11,523	15,354	15,170
BY-15	1,829	1,420											3,249	100,169	24,295	19,111	17,698
BY-16	908	823											1,731	62,803	9,264	12,541	15,844
BY-17	1,794	1,176											2,970	80,842	17,603	15,412	15,463
BY-18	2,784	2,387											5,171	122,974	31,890	29,509	33,072
BY-19	1,761	2,275											4,036	36,114	8,144	9,859	9,383
BY-20	1,636	2,008											3,644	41,489	7,840	6,533	9,282
BY-21	634	531											1,164	36,388	9,670	13,246	8,533
BY-22	1,742	1,310											3,052	110,851	24,755	27,093	33,387
BY-23	2,261	1,781											4,042	56,089	32,043	15,333	4,405
BY-24	870	712											1,582	59,746	13,268	13,484	15,265
BY-25	2,070	2,145											4,215	109,394	28,306	30,331	33,282
BY-26	2,683	2,344											5,027	120,593	33,853	30,446	33,167
Field Total:	40006	35117	0	0	0	0	0	0	0	0	0	0	75,123	3,668,952	446,855	445,787	439,615
Daily Avg.(mmscfd)	1291	1254	0	0	0	0	0	0	0	0	0	0	1,273		1,224	1,221	1,204
Field :	Chattak																
Ch-1	Production Suspended												25,834				
Field Total:	0									0			25,834				
Daily Avg.(mmscfd)	0									0			0				
Field :	Fenchuganj																
Fenchuganj-2	0	0											0	38,169	0	0	0
Fenchuganj-3	274	203											477	91,115	3,186	6,192	7,606
Fenchuganj-4	60	30											90	29,364	809	441	3,189
Field Total:	334	234	0	0	0	0	0	0	0	0	0	0	567	158,648	3,994	6,633	10,795
Daily Avg.(mmscfd)	11	8	0	0	0	0	0	0	0	0	0	0	10		11	18	30
Field :	Feni																
Feni-1	Production Suspended								0	0			34,214				
Feni-2	Production Suspended								0	0			6,119				
Feni-3	Production Suspended								0	0			2,176				

Monthly Production by Field and Well upto February- 2019



HYDROCARBON UNIT
Energy & Mineral Resources Division

Figures in mmscf

Well	Jan	Feb	Mar	Apr	May	Jun	Jul	Aug	Sep	Oct	Nov	Dec	Total	Cumulative	2018	2017	2016				
Feni-4	Production Suspended								0									14,386			
Feni-5	Production Suspended								0									6,127			
Field Total:													63,023								
Daily Avg.(mmscfd)																					
Field :	Habiganj																				
Hbj-1	429	375											803	278,911	2,207	0	0				
Hbj-2	0	0											0	275,704	0	0	0				
Hbj-3	1,105	952											2,057	379,215	13,155	13,151	13,227				
Hbj-4	1,105	952											2,057	373,673	13,155	13,151	13,227				
Hbj-5	798	711											1,509	299,183	9,497	9,497	9,552				
Hbj-6	461	413											874	163,083	5,487	5,491	5,523				
Hbj-7	1,211	1,090											2,301	255,420	14,533	14,565	14,685				
Hbj-8	0	0											0	11,023	0	0	0				
Hbj-9	0	0											0	52,652	0	0	0				
Hbj-10	969	870											1,839	254,971	13,928	14,058	14,629				
Hbj-11	697	623											1,320	97,628	9,579	10,398	11,247				
Field Total:	6,776	5,985	0	0	0	0	0	0	0	0	0	0	12,761	2,441,462	81,540	80,313	82,091				
Daily Avg.(mmscfd)	219	214	0	0	0	0	0	0	0	0	0	0	216		223	220	225				
Field :	Jalalabad																				
JB-1	877	733											1,610	247,379	10,469	9,142	11,951				
JB-2	1,088	910											1,999	281,594	12,973	14,517	17,057				
JB-3	1,451	1,214											2,665	343,189	17,399	19,162	21,086				
JB-4	453	379											833	279,833	5,821	7,045	8,313				
JB-6	1,451	1,114											2,565	61,890	17,364	19,524	19,136				
JB-7	1,088	910											1,999	31,389	13,053	10,324	5,254				
JB-8	1,073	898											1,971	45,901	12,793	14,513	16,252				
Field Total:	7,482	6,158	0	0	0	0	0	0	0	0	0	0	13,640	1,291,175	89,872	94,226	99,048				
Daily Avg.(mmscfd)	241	220	0	0	0	0	0	0	0	0	0	0	231		246	258	271				
Field :	Kailas Tila																				
KTL-1	147	109											257	205,066	462	0	0				

Monthly Production by Field and Well upto February- 2019



HYDROCARBON UNIT

Energy & Mineral Resources Division

Figures in mmscf

Well	Jan	Feb	Mar	Apr	May	Jun	Jul	Aug	Sep	Oct	Nov	Dec	Total	Cumulative	2018	2017	2016
KTL-2	612	551											1,162	179,309	7,190	7,242	7,282
KTL-3	235	209											444	138,264	2,947	3,255	5,003
KTL-4	253	228											482	96,577	3,336	3,680	3,499
KTL-5	0	0											0	17,923	0	0	0
KTL-6	770	689											1,459	92,548	8,950	9,086	8,975
KTL-7	0	0											0	816	0	0	329
Field Total:	2,017	1,787	0	0	0	0	0	0	0	0	0	0	3,804	730,502	22,886	23,263	25,088
Daily Avg.(mmscfd)	65	64	0	0	0	0	0	0	0	0	0	0	64		63	64	69
Field :	Kamta																
Kamta-1	Production Suspended													21,139			
Field Total:														21,139			
Daily Avg.(mmscfd)																	
Field :	Meghna																
M-1	372	308											681	69,654	4,538	4,625	4,425
Field Total:	372	308	0	0	0	0	0	0	0	0	0	0	681	69,654	4,538	4,625	4,425
Daily Avg.(mmscfd)	12	11	0	0	0	0	0	0	0	0	0	0	12		12	13	12
Field :	Moulavi Bazar																
MV Bazar-2	121	79											199	54,237	2,302	2,866	3,201
MV Bazar-3	207	149											357	158,165	3,712	4,705	5,394
MV Bazar-4	159	102											261	58,328	3,103	3,945	4,141
MV Bazar-5	0	0												66			
MV Bazar-6	193	182											375	16,724	1,734	1,676	1,737
MV Bazar-7	1	1											2	5,646	21	152	123
MV Bazar-9	0	0											0	30,335	1	0	41
Field Total:	682	511	0	0	0	0	0	0	0	0	0	0	1,194	323,501	10,872	13,345	14,638
Daily Avg.(mmscfd)	22	18	0	0	0	0	0	0	0	0	0	0	20		30	37	40
Field :	Narshingdi																
N-1	530	479											1,009	145,603	6,181	6,279	6,242
N-2	314	278											592	55,962	3,705	3,962	4,122

Monthly Production by Field and Well upto February- 2019



HYDROCARBON UNIT
Energy & Mineral Resources Division

Figures in mmscf

Well	Jan	Feb	Mar	Apr	May	Jun	Jul	Aug	Sep	Oct	Nov	Dec	Total	Cumulative	2018	2017	2016
Field Total:	844	757	0	0	0	0	0	0	0	0	0	0	1,601	201,565	9,886	10,241	10,364
Daily Avg.(mmscfd)	27	27	0	0	0	0	0	0	0	0	0	0	27		27	28	28
Field :	Rashidpur																
RP-1	542	491											1,033	168,095	6,505	6,625	6,639
RP-2	0	0											0	82,474			
RP-3	300	271											570	131,779	3,541	3,730	3,877
RP-4	267	239											507	128,402	3,227	3,516	3,675
RP-5	0	0											0	25,647			
RP-6	0	0											0	9,983	0	0	0
RP-7	173	155											328	64,653	2,096	2,225	2,355
RP-8	314	284											598	19,631	3,696	3,977	4,422
Field Total:	1,597	1,439	0	0	0	0	0	0	0	0	0	0	3,036	630,664	19,065	20,074	20,969
Daily Avg.(mmscfd)	52	51	0	0	0	0	0	0	0	0	0	0	51		52	55	57
Field :	Salda Nadi																
Salda-1	0	0											0	36,904	0	0	0
Salda-2	0	0											0	28,495	0	0	0
Salda-3	123	119											242	25,823	1,067	1,514	2,350
Salda-4	4	5											9	126	70	14	34
Field Total:	127	124	0	0	0	0	0	0	0	0	0	0	252	91,348	1,137	1,527	2,383
Daily Avg.(mmscfd)	4	4	0	0	0	0	0	0	0	0	0	0	4		3	4	7
Field :	Sangu																
Sangu-1	0	0	0	0	0	0	0	0	0	0	0	0	0	116,191	0	0	0
Sangu-3z	0	0	0	0	0	0	0	0	0	0	0	0	0	131,796	0	0	0
Sangu-4	Production Suspended						0	0	0	0	0	0	0	87,280			
Sangu-5	Production Suspended						0	0	0	0	0	0	0	61,674			
Sangu-7	Production Suspended						0	0	0	0	0	0	0	18,202			
Sangu-8	Production Suspended						0	0	0	0	0	0	0	37,619			
Sangu-9	0	0	0	0	0	0	0	0	0	0	0	0	0	30,638	0	0	0
Sangu-10	Production Suspended						0	0	0	0	0	0	0				
Sangu-11	0	0	0	0	0	0	0	0	0	0	0	0	0	6,067	0	0	0

Monthly Production by Field and Well upto February- 2019



HYDROCARBON UNIT
Energy & Mineral Resources Division

Figures in mmscf

Well	Jan	Feb	Mar	Apr	May	Jun	Jul	Aug	Sep	Oct	Nov	Dec	Total	Cumulative	2018	2017	2016
Field Total:	0	0	0	0	0	0	0	0	0	0	0	0	0	489,467	0	0	0
Daily Avg.(mmscfd)	0	0	0	0	0	0	0	0	0	0	0	0	0		0	0	0
Field : Semutang																	
Semutang-5	14	12											26	12,092	291	471	946
Semutang-6	7	11											18	974	84	66	0
Field Total:	22	23	0	0	0	0	0	0	0	0	0	0	44	13,065	375	537	946
Daily Avg.(mmscfd)	1	1	0	0	0	0	0	0	0	0	0	0	1		1	1	3
Field : Shahbazpur																	
Shahbazpur-1	0	0											0	21,358	134	4,835	3,623
Shahbazpur-2	534	523											1,057	12,139	6,650	4,243	189
Shahbazpur-3	377	436											813	13,139	5,222	1,162	3,116
Shahbazpur-4	513	452											964	13,968	6,936	1,801	1,091
Field Total:	1,424	1,411	0	0	0	0	0	0	0	0	0	0	2,834	60,604	18,943	12,041	8,019
Daily Avg.(mmscfd)	46	50	0	0	0	0	0	0	0	0	0	0	48		52	33	22
Field : Srikail																	
Srikail-2	442	417											859	38,803	5,154	5,384	6,064
Srikail-3	358	333											690	35,522	4,273	4,944	6,607
Srikail-4	276	256											532	8,977	2,971	3,439	2,035
Field Total:	1,076	1,005	0	0	0	0	0	0	0	0	0	0	2,081	83,302	12,398	13,767	14,707
Daily Avg.(mmscfd)	35	36	0	0	0	0	0	0	0	0	0	0	35		34	38	40
Field : Sundalpur																	
Sundalpur -1	0	0											0	9,809	0	0	552
Sundalpur -2	220	200											420	2,596	2,176	0	0
Field Total:	220	200	0	0	0	0	0	0	0	0	0	0	420	12,405	2,176	0	552
Daily Avg.(mmscfd)	7	7	0	0	0	0	0	0	0	0	0	0	7		6	0	2
Field : Sylhet																	
Sylhet-3	Production Suspended													89,032			
Sylhet-6	Production Suspended													91,748			

Monthly Production by Field and Well upto February- 2019



HYDROCARBON UNIT
Energy & Mineral Resources Division

Figures in mmscf

Well	Jan	Feb	Mar	Apr	May	Jun	Jul	Aug	Sep	Oct	Nov	Dec	Total	Cumulative	2018	2017	2016
Sylhet-7	131	108											238	27,229	1,622	2,061	2,212
Surma-1	0	0											0	6,528	0	249	720
Field Total:	131	108	0	0	0	0	0	0	0	0	0	0	238	214,536	1,622	2,309	2,932
Daily Avg.(mmscfd)	4	4	0	0	0	0	0	0	0	0	0	0	4		4	6	8
Field :	Titas																
Titas-1	675	537											1,212	440,841	8,516	7,897	9,999
Titas-2	962	865											1,826	437,331	11,522	11,506	11,474
Titas-3	0	0		0	0	0	0	0	0	0	0	0	0	314,888	0		
Titas-4	994	861											1,855	372,307	11,726	11,798	12,782
Titas-5	1,020	899											1,920	430,172	11,838	11,869	10,692
Titas-6	978	878											1,856	364,984	12,030	12,029	12,809
Titas-7	947	824											1,771	346,635	11,919	11,707	12,125
Titas-8	510	426											936	273,572	6,154	6,889	7,046
Titas-9	539	475											1,014	277,504	6,706	8,246	8,467
Titas-10	647	565											1,211	200,212	7,612	7,431	4,350
Titas-11	855	762											1,617	248,518	9,998	10,276	9,075
Titas-12	482	422											904	101,679	5,160	5,168	5,326
Titas-13	580	513											1,093	191,185	6,952	7,879	9,553
Titas-14	576	498											1,073	151,059	7,203	8,309	8,888
Titas-15	460	412											872	140,386	5,543	7,973	11,777
Titas-16	669	592											1,262	147,607	8,605	10,060	11,333
Titas-17	515	431											946	40,448	6,335	7,011	7,359
Titas-18	546	458											1,004	39,010	6,664	7,168	7,338
Titas-19	507	450											957	29,006	6,115	6,106	6,253
Titas-20	305	277											582	19,410	3,914	3,635	3,645
Titas-21	253	232											484	9,716	2,995	2,800	1,572
Titas-22	309	284											593	25,010	4,158	4,336	5,497
Titas-27	487	404											891	29,730	5,827	6,136	6,233
Titas-23	483	436											919	10,923	5,594	4,410	
Titas-24	202	185											386	5,378	2,709	2,283	
Titas-25	528	476											1,004	13,219	6,324	5,622	269
Titas-26	809	733											1,543	20,808	9,672	9,210	383

Monthly Production by Field and Well upto February- 2019



HYDROCARBON UNIT
Energy & Mineral Resources Division

Figures in mmscf

Well	Jan	Feb	Mar	Apr	May	Jun	Jul	Aug	Sep	Oct	Nov	Dec	Total	Cumulative	2018	2017	2016
Field Total:	15,838	13,893	0	0	0	0	0	0	0	0	0	0	29,732	4,681,539	191,792	197,756	184,246
Daily Avg.(mmscfd)	511	496	0	0	0	0	0	0	0	0	0	0	504		525	542	505
Field : Begumganj																	
Begumganj-3	176	179											355	1,825	593	0	85
Field Total:	176	179	0	0	0	0	0	0	0	0	0	0	355	1,825	593	0	85
Daily Avg.(mmscfd)	6	6	0	0	0	0	0	0	0	0	0	0	6		2	0	0
Field : Rupganj																	
Rupganj-1	0	0											0	679	0	679	
Field Total:	0	0	0	0	0	0	0	0	0	0	0	0	0	679	0	679	
Daily Avg.(mmscfd)	0	0	0	0	0	0	0	0	0	0	0	0	0		0	2	
Grand Total (in Bcf)	83.29	72.98	0.00	0.00	0.00	0.00	0	0.00	0.00	0.00	0.00	0.00	156.3	16,615.36	964.7	979.8	973.1
Daily Avg.(mmscfd)	2,687	2,606	0	0	0	0	0	0	0	0	0	0	2,649		2,643	2,684	2,666

Monthly Condensate Production by Fields upto February 2019



Field Name	Jan-19	Feb-19	Mar-19	Apr-19	May-19	Jun-19	Jul-19	Aug-19	Sep-19	Oct-19	Nov-19	Dec-19	Total Cumulative 000' bbl	2018	2017	2016	
Bakhrabad	475	462											937	1,021	5,022	6,173	7,091
Daily Avg.	15	17	0	0	0	0	0	0	0	0	0	0	16	14	17	229	
Bangura	9,547	8,321											17,868	1,083	94,737	103,198	103,416
Daily Avg.	308	297	0	0	0	0	0	0	0	0	0	0	303	260	283	3,336	
Beani Bazar	4,207	3,945											8,151	1,575	51,187	68,202	56,146
Daily Avg.	136	141	0	0	0	0	0	0	0	0	0	0	138	140	187	1,811	
Bibiyana	286,489	247,882											534,371	21,689	3,267,318	3,283,757	3,291,906
Daily Avg.	9,242	8,853	0	0	0	0	0	0	0	0	0	0	9,057	8,952	8,997	106,191	
Chattak	0	0	0	0	0	0	0	0	0	0	0	0	0	4	0		
Daily Avg.	0	0	0	0	0	0	0	0	0	0	0	0	0	0	0		
Fenchuganj	126	80											206	115	1,625	2,462	6,138
Daily Avg.	4	3	0	0	0	0	0	0	0	0	0	0	3	4	7	198	
Feni	0	0	0	0	0	0	0	0	0	0	0	0	0	110	0	0	0
Daily Avg.	0	0	0	0	0	0	0	0	0	0	0	0	0	0	0	0	0
Habiganj	721	610											1,331	131	5,612	3,955	4,143
Daily Avg.	23	22	0	0	0	0	0	0	0	0	0	0	23	15	11	134	
Jalalabad	29,901	23,874											53,774	10,193	367,160	437,070	528,191
Daily Avg.	965	853	0	0	0	0	0	0	0	0	0	0	911	1,006	1,197	17,038	
Kailas Tila	17,562	17,085											34,646	7,829	189,620	203,979	223,169
Daily Avg.	567	610	0	0	0	0	0	0	0	0	0	0	587	520	559	7,199	
Kamta	Production Suspended									0	0			4			
Daily Avg.										0	0			0	0	0	
Meghna	589	514											1,103	108	7,947	7,741	7,735
Daily Avg.	19	18	0	0	0	0	0	0	0	0	0	0	19	22	21	250	
Moulavi Bazar	104	80											184	117	856	1,128	1,585
Daily Avg.	3	3	0	0	0	0	0	0	0	0	0	0	3	2	3	51	

Monthly Condensate Production by Fields upto February 2019



Field Name	Jan-19	Feb-19	Mar-19	Apr-19	May-19	Jun-19	Jul-19	Aug-19	Sep-19	Oct-19	Nov-19	Dec-19	Total Cumulative 000' bbl	2018	2017	2016	
Narshingdi	1,285	1,131											2,416	420	15,797	16,656	17,534
Daily Avg.	41	40	0	0	0	0	0	0	0	0	0	0	41	43	46	566	
Rashidpur	1,213	1,038											2,251	778	14,393	10,723	14,938
Daily Avg.	39	37	0	0	0	0	0	0	0	0	0	0	38	39	29	482	
Saldanadi	19	19											38	58	137	225	386
Daily Avg.	1	1	0	0	0	0	0	0	0	0	0	0	1	0	1	12	
Sangu	0	0	0	0	0	0	0	0	0	0	0	0	0	37	0	0	0
Daily Avg.	0	0	0	0	0	0	0	0	0	0	0	0	0	0	0	0	0
Semutang	0	0											0	5	26	99	272
Daily Avg.	0	0	0	0	0	0	0	0	0	0	0	0	0	0	0	0	9
Shahbazpur	187	148											336	7	2,488	1,791	839
Daily Avg.	6	5	0	0	0	0	0	0	0	0	0	0	6	7	5	27	
Srikail	3,226	2,920											6,146	134	33,765	37,879	21,075
Daily Avg.	104	104	0	0	0	0	0	0	0	0	0	0	104	93	104	680	
Sundalpur	10	9											19	0	121	0	0
Daily Avg.	0	0	0	0	0	0	0	0	0	0	0	0	0	0	0	0	0
Sylhet	969	864											1,833	797	10,277	15,593	20,532
Daily Avg.	31	31	0	0	0	0	0	0	0	0	0	0	31	28	43	662	
Titas	13,655	11,331											24,986	5,249	159,803	154,262	133,133
Daily Avg.	440	405	0	0	0	0	0	0	0	0	0	0	423	438	423	4,295	
Begumganj	60	60											120	0	201	0	0
Daily Avg.	2	0	0	0	0	0	0	0	0	0	0	0	2	1	0	0	
Rupganj	0	0											0	1	0	1,133	
Daily Avg.	0	0	0	0	0	0	0	0	0	0	0	0	0	0	3		
Total (000'bbl)	370	320	0	0	0	0	0	0	0	0	0	0	691	51,468	4,228	4,356	4,438
Daily Avg. (000'bbl)	11.9	11.4	0.0	0.0	0.0	0	0.0	0.0	0.0	0.0	0	0	12	11.6	11.9	12.2	

Note: Historical condensate figure of Sangu available from 2006. Sylhet available from August 1964

Monthly Water Production by Fields in February 2019



Field Name	Jan-19	Feb-19	Mar-19	Apr-19	May-19	Jun-19	Jul-19	Aug-19	Sep-19	Oct-19	Nov-19	Dec-19	Total	2,018	2,017
Bakhrabad	2,117	1,708											3,825	28,218	8,419
Daily Avg.	68	61	0	0	0	0	0	0	0	0	0	0	65	77	
Bangura	3,330	3,016											6,346	43,917	11,705
Daily Avg.	107	108	0	0	0	0	0	0	0	0	0	0	108	120	
Beani Bazar	9,793	8,568											18,361	109,854	24,865
Daily Avg.	316	306	0	0	0	0	0	0	0	0	0	0	311	301	
Bibiyana	16,351	14,524											30,875	194,651	47,219
Daily Avg.	527	519	0	0	0	0	0	0	0	0	0	0	523	533	
Chattak	0	0	0	0	0	0	0	0	0	0	0	0	0	0	0
Daily Avg.	0	0	0	0	0	0	0	0	0	0	0	0	0	0	0
Fenchuganj	6,323	3,006											9,328	74,969	6,700
Daily Avg.	204	107	0	0	0	0	0	0	0	0	0	0	158	205	
Feni	0	0	0	0	0	0	0	0	0	0	0	0	0	0	0
Daily Avg.	0	0	0	0	0	0	0	0	0	0	0	0	0	0	0
Habiganj	2,532	2,133											4,665	39,104	5,197
Daily Avg.	82	76	0	0	0	0	0	0	0	0	0	0	79	107	
Jalalabad	4,717	4,157											8,874	55,950	12,915
Daily Avg.	152	148	0	0	0	0	0	0	0	0	0	0	150	153	
Kailas Tila	3,934	3,519											7,453	43,233	6,809
Daily Avg.	127	126	0	0	0	0	0	0	0	0	0	0	126	118	
Kamta	0	0	0	0	0	0	0	0	0	0	0	0	0	0	0
Daily Avg.	0	0	0	0	0	0	0	0	0	0	0	0	0	0	0
Meghna	211	429											640	2,014	551
Daily Avg.	7	15	0	0	0	0	0	0	0	0	0	0	11	6	
Moulavi Baza	1,379	710											2,089	13,965	754
Daily Avg.	44	25	0	0	0	0	0	0	0	0	0	0	35	38	
Narshingdi	883	798											1,681	10,374	2,645
Daily Avg.	28	29	0	0	0	0	0	0	0	0	0	0	28	28	
Rashidpur	13,567	12,332											25,899	137,406	30,969
Daily Avg.	438	440	0	0	0	0	0	0	0	0	0	0	439	376	
Saldanadi	129	115											244	813	387
Daily Avg.	4	4	0	0	0	0	0	0	0	0	0	0	4	2	

Monthly Water Production by Fields in February 2019



Field Name	Jan-19	Feb-19	Mar-19	Apr-19	May-19	Jun-19	Jul-19	Aug-19	Sep-19	Oct-19	Nov-19	Dec-19	Total	2,018	2,017
Sangu	0	0	0	0	0	0	0	0	0	0	0	0	0	0	0
Daily Avg.	0	0	0	0	0	0	0	0	0	0	0	0	0	0	0
Semutang	45	47											92	3,002	719
Daily Avg.	1	2	0	0	0	0	0	0	0	0	0	0	2	8	
Shahbazpur	1,789	1,679											3,468	22,110	3,912
Daily Avg.	58	60	0	0	0	0	0	0	0	0	0	0	59	61	
Srikail	1,649	1,517											3,166	18,432	4,904
Daily Avg.	53	54	0	0	0	0	0	0	0	0	0	0	54	50	
Sundalpur	26	24											50	219	0
Daily Avg.	1	1	0	0	0	0	0	0	0	0	0	0	1	1	
Sylhet	2,312	2,022											4,334	20,362	1,298
Daily Avg.	75	72	0	0	0	0	0	0	0	0	0	0	73	56	
Titas	49,706	45,683											95,389	556,608	126,334
Daily Avg.	1,603	1,632	0	0	0	0	0	0	0	0	0	0	1,617	1,525	
Begumganj	69	54											122	207	0
Daily Avg.	2	2	0	0	0	0	0	0	0	0	0	0	2	1	
Rupganj	0												0	0	34
Daily Avg.	0	0	0	0	0	0	0	0	0	0	0	0	0	0	
Total (000'bl	120,860	106,040	0	0	0	0	0	0	0	0	0	0	226,900	1,375,408	296
Daily Avg. (000'bbl)	3,899	3,787	0	0	0	0	0	0	0	0	0	0	3,846	3,768	1

Conditions of Field and Well upto February 2019



Well	company	well type	Discovery	production start	Drilled depth (ft)	Pressure	Pressure type	Completion Zone
Field : Bakharabad								
BKB-1	BGFCL	Vertical	1969	June,1969	9309		FWHP	J
BKB-2	BGFCL	Directional	1969	October,1981	7496	248-274	FWHP	G
BKB-3	BGFCL	Directional	1969	April,1982	9339	356-412	FWHP	G
BKB-4	BGFCL	Directional	1969	June,1982	9430			D
BKB-5	BGFCL	Directional	1969	Sept,1982	9675	1555-1646	FWHP	B
BKB-6	BGFCL	Directional	1969	March,1989	8785			J
BKB-7	BGFCL	Directional	1969	July,1989	8605		FWHP	J
BKB-8	BGFCL	Directional	1969	Sept,1989	8840	490-523	FWHP	J
BKB-9	BGFCL	Vertical	1969	August,2013	8318	1005-1097	FWHP	G
BKB-10	BGFCL	Directional	1969	June,2016	9291	1010-1102	FWHP	K
Field : Bangura								
Bangura-1	Tullow		2004			887-940	FWHP	D
Bangura-2	Tullow		2004			587-685	FWHP	D/E
Bangura-3	Tullow		2004			719-789	FWHP	D
Bangura-6	Tullow		2004			708-780	FWHP	D
Bangura-5	Tullow		2004			579-621	FWHP	D
Field : Beani Bazar								
BB-1	SGFL		1981	July,1999	13480	580-620	SIWHP	Upper
BB-2	SGFL		1981	July,1999	12048	3210-3220	FWHP	Upper
Field : Bibiyana								
BY-1	Chevron		1998			1547-2007	FWHP	BB60, BB66
BY-2	Chevron		1998			1313-1390	FWHP	BB60, BH20A, BH20E
BY-3	Chevron		1998			1363-1403	FWHP	BB70
BY-4	Chevron		1998			1330-1390	FWHP	BH10
BY-5	Chevron		1998			1254-1299	FWHP	BH20A, BH20B, BH20C, BH20D
BY-6	Chevron		1998			1250-1486	FWHP	BB70
BY-7	Chevron		1998			1454-1566	FWHP	BH10
BY-8	Chevron		1998			1270-1297	FWHP	BH20A, BH20B
BY-9	Chevron		1998			1243-1273	FWHP	BH10
BY-10	Chevron		1998			1465-1533	FWHP	BB60
BY-11	Chevron		1998			1260-1284	FWHP	BH20A, BH20B
BY-12	Chevron		1998			1259-1332	FWHP	BB70
BY-13	Chevron		1998			1300-1356	FWHP	BH20A, BH20B
BY-14	Chevron		1998			1342-1632	FWHP	BH20A, BH20B
BY-15	Chevron		1998			2189-2240	FWHP	BB60
BY-16	Chevron		1998			1381-1644	FWHP	BH10, BH20D

Conditions of Field and Well upto February 2019



Well	company	well type	Discovery	production start	Drilled depth (ft)	Pressure	Pressure type	Completion Zone
BY-17	<i>Chevron</i>		<i>1998</i>			<i>2104-2229</i>	<i>FWHP</i>	<i>BB60</i>
BY-18	<i>Chevron</i>		<i>1998</i>			<i>1904-2218</i>	<i>FWHP</i>	<i>BB60</i>
BY-19	<i>Chevron</i>		<i>1998</i>			<i>1354-1477</i>	<i>FWHP</i>	<i>BH10, BH20A</i>
BY-20	<i>Chevron</i>		<i>1998</i>			<i>1248-1262</i>	<i>FWHP</i>	<i>BH20D, BH20A, BH10</i>
BY-21	<i>Chevron</i>		<i>1998</i>			<i>1333-1348</i>	<i>FWHP</i>	<i>BH20A, BH20B, BH10</i>
BY-22	<i>Chevron</i>		<i>1998</i>			<i>1552-1586</i>	<i>FWHP</i>	<i>BB60</i>
BY-23	<i>Chevron</i>		<i>1998</i>			<i>1739-2021</i>	<i>FWHP</i>	<i>BH10, BH20A, BH20B, BH20C</i>
BY-24	<i>Chevron</i>		<i>1998</i>			<i>1337-2091</i>	<i>FWHP</i>	<i>BB60</i>
BY-25	<i>Chevron</i>		<i>1998</i>			<i>1728-1857</i>	<i>FWHP</i>	<i>BB60, BB66</i>
BY-26	<i>Chevron</i>		<i>1998</i>			<i>1877-2094</i>	<i>FWHP</i>	<i>BB60, BB64</i>
Field : Chattak								
Ch-1	SGFL		1959					
Field : Fenchuganj								
Fenchuganj-2	<i>BAPEX</i>		<i>1988</i>	<i>May, 2004</i>				
Fenchuganj-3	<i>BAPEX</i>		<i>1988</i>	<i>February, 2005</i>		<i>2004-2010</i>		<i>upper</i>
Fenchuganj-4	<i>BAPEX</i>		<i>1988</i>			<i>2037-2065</i>		
Field : Feni								
Feni-1	<i>BAPEX</i>		<i>1981</i>					
Feni-2	<i>BAPEX</i>		<i>1981</i>					
Feni-3	<i>BAPEX</i>		<i>1981</i>					
Feni-4	<i>BAPEX</i>		<i>1981</i>					
Feni-5	<i>BAPEX</i>		<i>1981</i>					
Field : Habiganj								
Hbj-1	<i>BGFCL</i>	<i>Vertical</i>	<i>1963</i>	<i>Feb,1969</i>	<i>11500</i>		<i>FWHP</i>	<i>upper</i>
Hbj-2	<i>BGFCL</i>	<i>Vertical</i>	<i>1963</i>	<i>Feb,1969</i>	<i>5100</i>		<i>FWHP</i>	<i>upper</i>
Hbj-3	<i>BGFCL</i>	<i>Vertical</i>	<i>1963</i>	<i>July,1985</i>	<i>5282</i>	<i>1478-1486</i>	<i>FWHP</i>	<i>upper</i>
Hbj-4	<i>BGFCL</i>	<i>Vertical</i>	<i>1963</i>	<i>May,1985</i>	<i>5249</i>	<i>1460-1467</i>	<i>FWHP</i>	<i>upper</i>
Hbj-5	<i>BGFCL</i>	<i>Directional</i>	<i>1963</i>	<i>Feb,1992</i>	<i>11552</i>	<i>1440-1446</i>	<i>FWHP</i>	<i>upper</i>
Hbj-6	<i>BGFCL</i>	<i>Vertical</i>	<i>1963</i>	<i>Feb,1992</i>	<i>5515</i>	<i>1375-1379</i>	<i>FWHP</i>	<i>upper</i>
Hbj-7	<i>BGFCL</i>	<i>Vertical</i>	<i>1963</i>	<i>April,2000</i>	<i>10236</i>	<i>1331-1139</i>	<i>FWHP</i>	<i>upper</i>
Hbj-8	<i>BGFCL</i>	<i>Vertical</i>	<i>1963</i>	<i>May, 2000</i>	<i>5280</i>			<i>upper</i>
Hbj-9	<i>BGFCL</i>	<i>Vertical</i>	<i>1963</i>	<i>July,1998</i>	<i>5249</i>			<i>upper</i>
Hbj-10	<i>BGFCL</i>	<i>Vertical</i>	<i>1963</i>	<i>Apr, 2000</i>	<i>5133</i>	<i>1322-1331</i>	<i>FWHP</i>	<i>upper</i>
Hbj-11	<i>BGFCL</i>	<i>Vertical</i>	<i>1963</i>	<i>February,2008</i>	<i>10499</i>	<i>1417-1423</i>	<i>FWHP</i>	<i>upper</i>
Field : Jalalabad								
JB-1	<i>Chevron</i>		<i>1989</i>			<i>1333-1436</i>	<i>FWHP</i>	<i>BB60, BB50</i>

Conditions of Field and Well upto February 2019



Well	company	well type	Discovery	production start	Drilled depth (ft)	Pressure	Pressure type	Completion Zone
JB-2	<i>Chevron</i>		<i>1989</i>			<i>1279-1294</i>	<i>FWHP</i>	<i>BB50, BB60</i>
JB-3	<i>Chevron</i>		<i>1989</i>			<i>1332-1375</i>	<i>FWHP</i>	<i>BB50, BB60</i>
JB-4	<i>Chevron</i>		<i>1989</i>			<i>1365-1425</i>	<i>FWHP</i>	<i>BB60</i>
JB-6	<i>Chevron</i>		<i>1989</i>			<i>1354-1362</i>	<i>FWHP</i>	<i>BB60, BB50</i>
JB-7	<i>Chevron</i>		<i>1989</i>			<i>1666-1679</i>	<i>FWHP</i>	<i>BB20</i>
JB-8	<i>Chevron</i>		<i>1989</i>			<i>1362-1370</i>	<i>FWHP</i>	<i>BB50, BB60</i>
Field : Kailas Tila								
KTL-1	<i>SGFL</i>		<i>1962</i>	<i>June, 1983</i>	<i>12417</i>	<i>0</i>	<i>SIWHP</i>	
KTL-2	<i>SGFL</i>		<i>1962</i>	<i>Feb, 1995</i>		<i>2225-2230</i>	<i>FWHP</i>	
KTL-3	<i>SGFL</i>		<i>1962</i>	<i>March, 1995</i>		<i>2470-2495</i>	<i>FWHP</i>	
KTL-4	<i>SGFL</i>		<i>1962</i>	<i>March, 1997</i>		<i>2360-2410</i>	<i>FWHP</i>	
KTL-5	<i>SGFL</i>		<i>1962</i>	<i>Sep, 2006</i>		<i>0</i>	<i>SIWHP</i>	
KTL-6	<i>SGFL</i>		<i>1962</i>	<i>Aug, 2007</i>		<i>2490-2495</i>	<i>FWHP</i>	
KTL-7	<i>SGFL</i>		<i>1962</i>			<i>0</i>	<i>SIWHP</i>	
Field : Kamta								
Kamta-1	<i>BGFCL</i>	<i>Vertical</i>	<i>1981</i>	<i>july,1982</i>	<i>11857</i>			<i>N/A</i>
Field : Meghna								
M-1	<i>BGFCL</i>	<i>Vertical</i>	<i>2004</i>	<i>july,1990</i>	<i>10069</i>	<i>1400-1450</i>	<i>FWHP</i>	<i>A,E,F & G</i>
Field : Moulavi Bazar								
MV Bazar-2	<i>Chevron</i>		<i>1997</i>			<i>800-820</i>	<i>FWHP</i>	<i>BB70</i>
MV Bazar-3	<i>Chevron</i>		<i>1997</i>			<i>800-820</i>	<i>FWHP</i>	<i>BB70</i>
MV Bazar-4	<i>Chevron</i>		<i>1997</i>			<i>946-952</i>	<i>FWHP</i>	<i>BB20</i>
MV Bazar-5	<i>Chevron</i>		<i>1997</i>			<i>0</i>	<i>SIWHP</i>	<i>BB60</i>
MV Bazar-6	<i>Chevron</i>		<i>1997</i>			<i>822-890</i>	<i>FWHP</i>	<i>BB20</i>
MV Bazar-7	<i>Chevron</i>		<i>1997</i>			<i>844-901</i>	<i>FWHP/SIWHP</i>	<i>BB20</i>
MV Bazar-9	<i>Chevron</i>		<i>1997</i>			<i>0</i>	<i>SIWHP</i>	<i>BB46, BB48, BB60</i>
Field : Narshingdi								
N-1	<i>BGFCL</i>	<i>vertical</i>	<i>1990</i>	<i>october,1990</i>	<i>11320</i>	<i>1143-1197</i>	<i>FWHP</i>	<i>BL</i>
N-2	<i>BGFCL</i>	<i>vertical</i>	<i>1990</i>	<i>february,2007</i>	<i>10778</i>	<i>1015-1097</i>	<i>FWHP</i>	<i>BL</i>
Field : Rashidpur								
RP-1	<i>SGFL</i>		<i>1960</i>			<i>1290-1291</i>	<i>FWHP</i>	<i>Upper</i>
RP-2	<i>SGFL</i>		<i>1960</i>			<i>73</i>	<i>SIWHP</i>	<i>Lower</i>
RP-3	<i>SGFL</i>		<i>1960</i>			<i>1548-1568</i>	<i>FWHP</i>	<i>Lower</i>
RP-4	<i>SGFL</i>		<i>1960</i>			<i>1450-1655</i>	<i>FWHP</i>	<i>Lower</i>
RP-5	<i>SGFL</i>		<i>1960</i>			<i>2291</i>	<i>SIWHP</i>	<i>Lower</i>
RP-6	<i>SGFL</i>		<i>1960</i>			<i>870</i>	<i>SIWHP</i>	<i>A</i>

Conditions of Field and Well upto February 2019



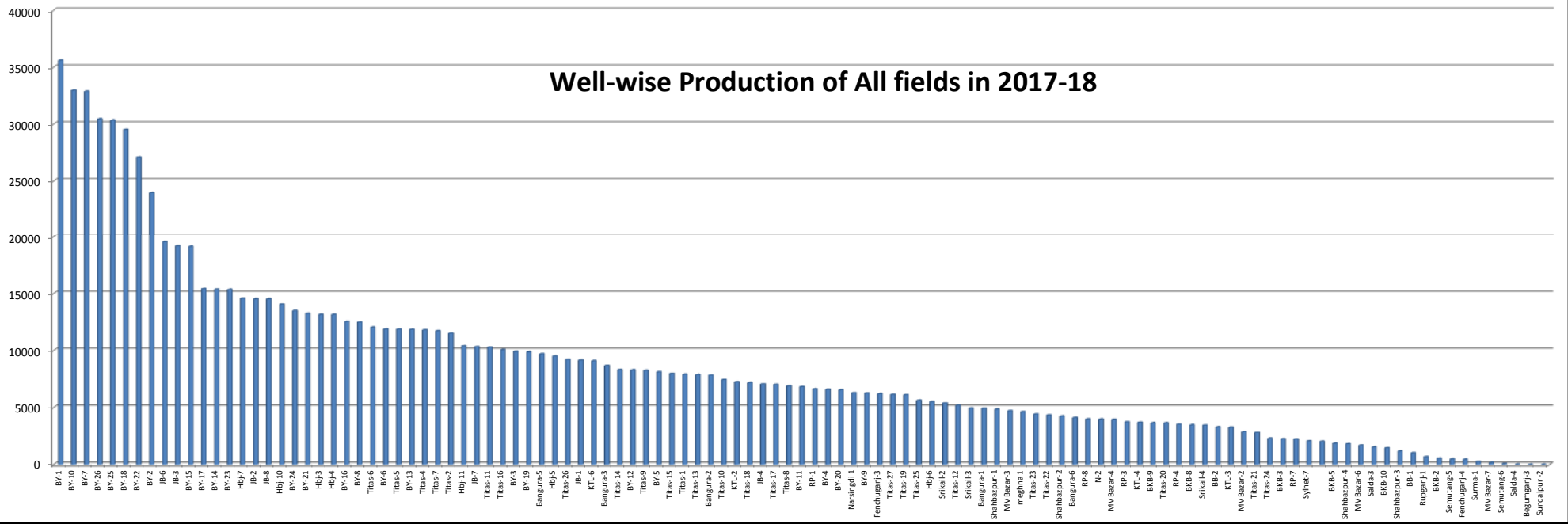
Well	company	well type	Discovery	production start	Drilled depth (ft)	Pressure	Pressure type	Completion Zone
RP-7	SGFL		1960			1308-1338	FWHP	Lower
RP-8	SGFL		1960			1600-1625	FWHP	Upper
Field : Salda Nadi								
Salda-1	BAPEX		1995					
Salda-2	BAPEX		1995					
Salda-3	BAPEX	Directional	1995	February, 2012		639-640, 698-700		Upper/Lower
Salda-4	BAPEX		1995					
Field : Sangu								
Sangu-1	BGFCL		1996					
Sangu-3z	BGFCL		1996					
Sangu-4	BGFCL		1996					
Sangu-5	BGFCL		1996					
Sangu-7	BGFCL		1996					
Sangu-8	BGFCL		1996					
Sangu-9	BGFCL		1996					
Sangu-10	BGFCL		1996					
Sangu-11	BGFCL		1996					
Field : Semutang								
Semutang-5	BAPEX		1967			280-508		Lower Zone
Semutang-6	BAPEX		1967			750-1302		
Field : Shahbazpur								
Shahbazpur-1	BAPEX		1995	May, 2009		2310-3543		Lower Zone
Shahbazpur-2	BAPEX		1995			3541-4133		Lower Zone
Shahbazpur-3	BAPEX		1995			4300		Upper Zone
Shahbazpur-4	BAPEX		1995			4250		Upper Zone
Field : Srikail								
Srikail-2	BAPEX		2012			990-1016		Upper & Lower D
Srikail-3	BAPEX		2012			981-1043		Upper & Lower D
Srikail-4	BAPEX		2012			1018-1068		Upper & Lower D
Field : Sundalpur								
Sundalpur -1	BAPEX		2011					
Sundalpur -2	BAPEX		2011					
Field : Sylhet								
Sylhet-3	SGFL		1955	Aug, 1958				
Sylhet-6	SGFL		1955	Aug, 1964		800-850	SIWHP	
Sylhet-7	SGFL		1955	Apr, 2005		1750-1820	FWHP	Lower Bokabil

Conditions of Field and Well upto February 2019

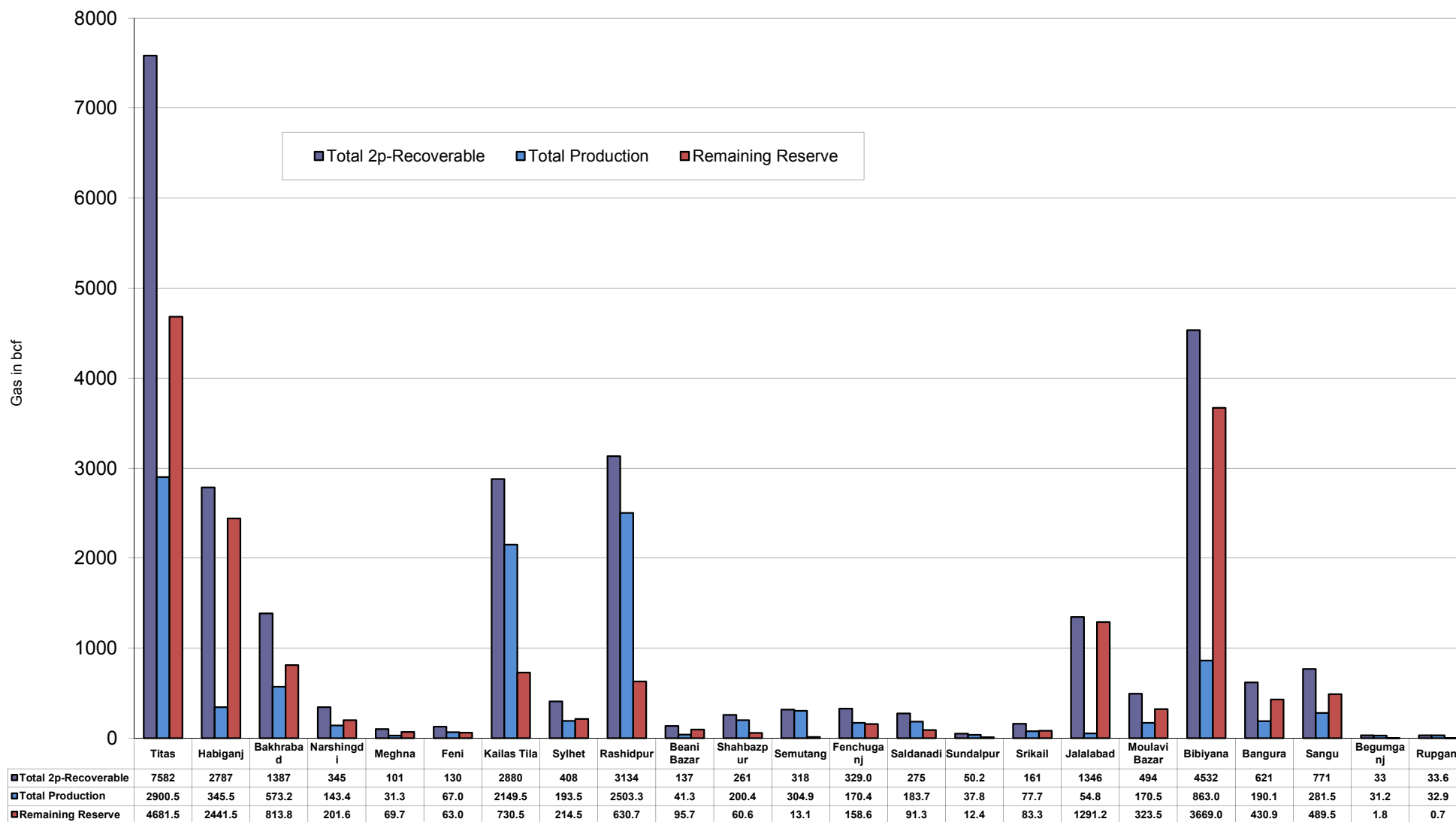


Well	company	well type	Discovery	production start	Drilled depth (ft)	Pressure	Pressure type	Completion Zone
Surma-1	SGFL		1955	June, 2010		230	SIWHP	C & D
Field : Titas								
Titas-1	BGFCL	vertical	1962	Mar,1969	12325	900-925	FWHP	A
Titas-2	BGFCL	vertical	1962	Fen,1969	10574	960-1020	FWHP	A
Titas-3	BGFCL	vertical	1962	sept,1969	9315	0	FWHP	A
Titas-4	BGFCL	vertical	1962	oct,1969	9350	1020-1070	FWHP	A
Titas-5	BGFCL	Directional	1962	jan,1981	10805	990-1035	FWHP	A
Titas-6	BGFCL	vertical	1962	Feb,1984	10072	1195-1225	FWHP	A
Titas-7	BGFCL	Directional	1962	July,1985	11006	1090-1160	FWHP	A
Titas-8	BGFCL	Directional	1962	sept,1985	11760	1000-1030	FWHP	B & C
Titas-9	BGFCL	Directional	1962	jan,1988	11893	1040-1085	FWHP	B & C
Titas-10	BGFCL	Directional	1962	may,1988	12139	1140-1180	FWHP	A
Titas-11	BGFCL	vertical	1962	Jun,1991	10462	1275-1310	FWHP	A
Titas-12	BGFCL	Directional	1962	July,2002	9873	1465-1500	FWHP	A
Titas-13	BGFCL	Directional	1962	June,2000	11487	1085-1115	FWHP	A
Titas-14	BGFCL	Directional	1962	June,2000	11004	1200-1250	FWHP	A
Titas-15	BGFCL	vertical	1962	may,2006	10446	0	FWHP	A
Titas-16	BGFCL	Directional	1962	dec,2005	11673	1205-1225	FWHP	A
Titas-17	BGFCL	vertical	1962	feb,2013	9424	1145-1175	FWHP	A
Titas-18	BGFCL	Directional	1962	august,2013	10932	1165-1190	FWHP	A
Titas-19	BGFCL	Directional	1962	may,2014	12730	1365-1415	FWHP	A
Titas-20	BGFCL	Directional	1962	oct,2013	11585	1370-1440	FWHP	A
Titas-21	BGFCL	Directional	1962	dec,2013	11631	1260-1285	FWHP	A
Titas-22	BGFCL	Directional	1962	march,2014	11926	990-1025	FWHP	A
Titas-27	BGFCL	Directional	1962	april,2014	10292	1245-1265	FWHP	A
Titas-23	BGFCL	Directional	1962	feb,2017	11988	2265-2340	FWHP	C
Titas-24	BGFCL	Directional	1962	oct,2016	12686	1120-1245	FWHP	C
Titas-25	BGFCL	vertical	1962	march,2016	11680	1300-1340	FWHP	A
Titas-26	BGFCL	Directional	1962	july,2016	12618	1840-1875	FWHP	C
Field : Begumganj								
Begumganj-3	BAPEX		1977					
Field : Rupganj								
Rupganj-1	BAPEX		2014			38-88		

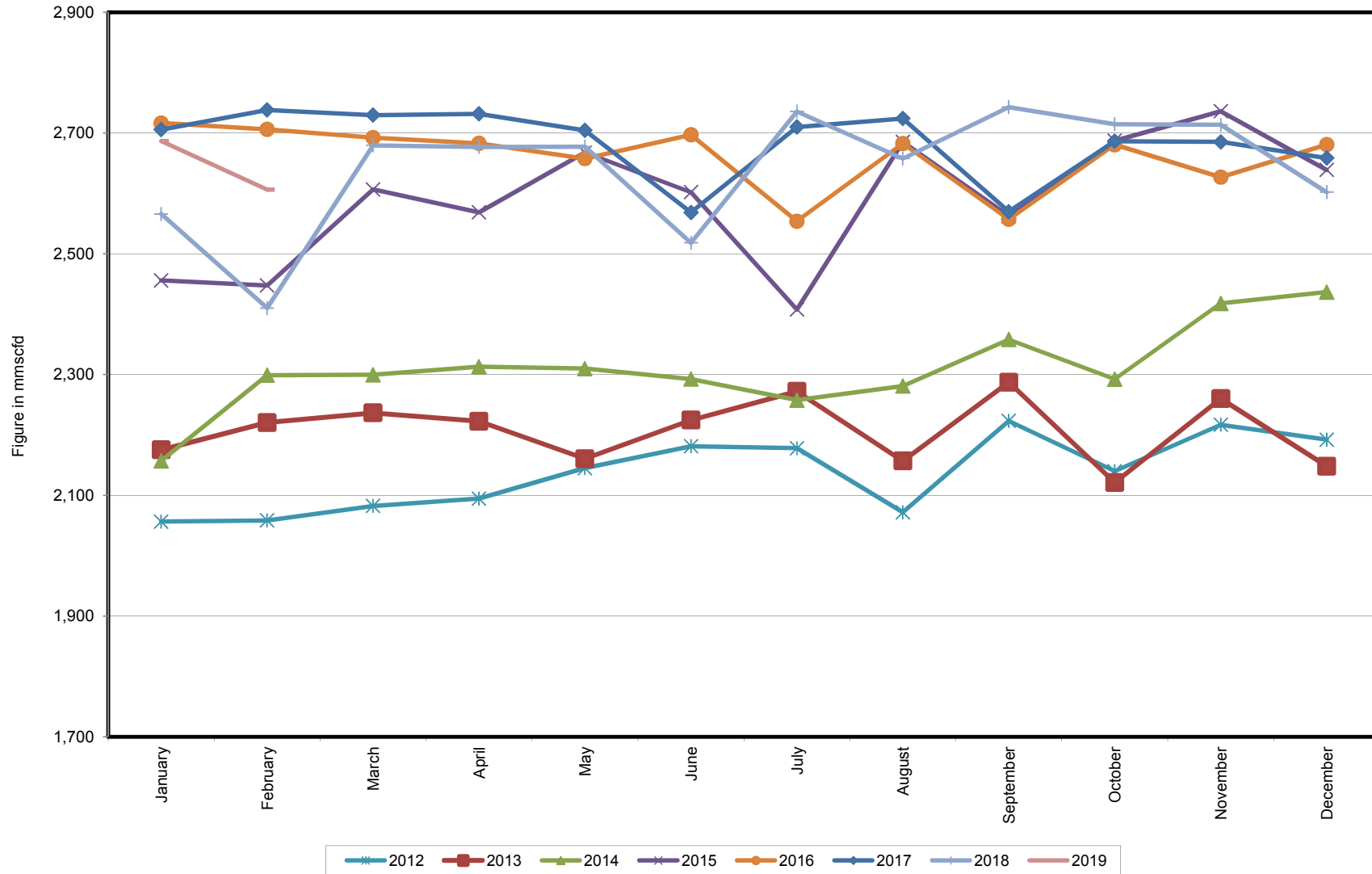
Well-wise Production of All fields in 2017-18



Reserve, Production and Remaining Reserve as of February 2019



Daily Avg. Production From January 2012 to February 2019



Field Wise Daily Avg. Production February 2019

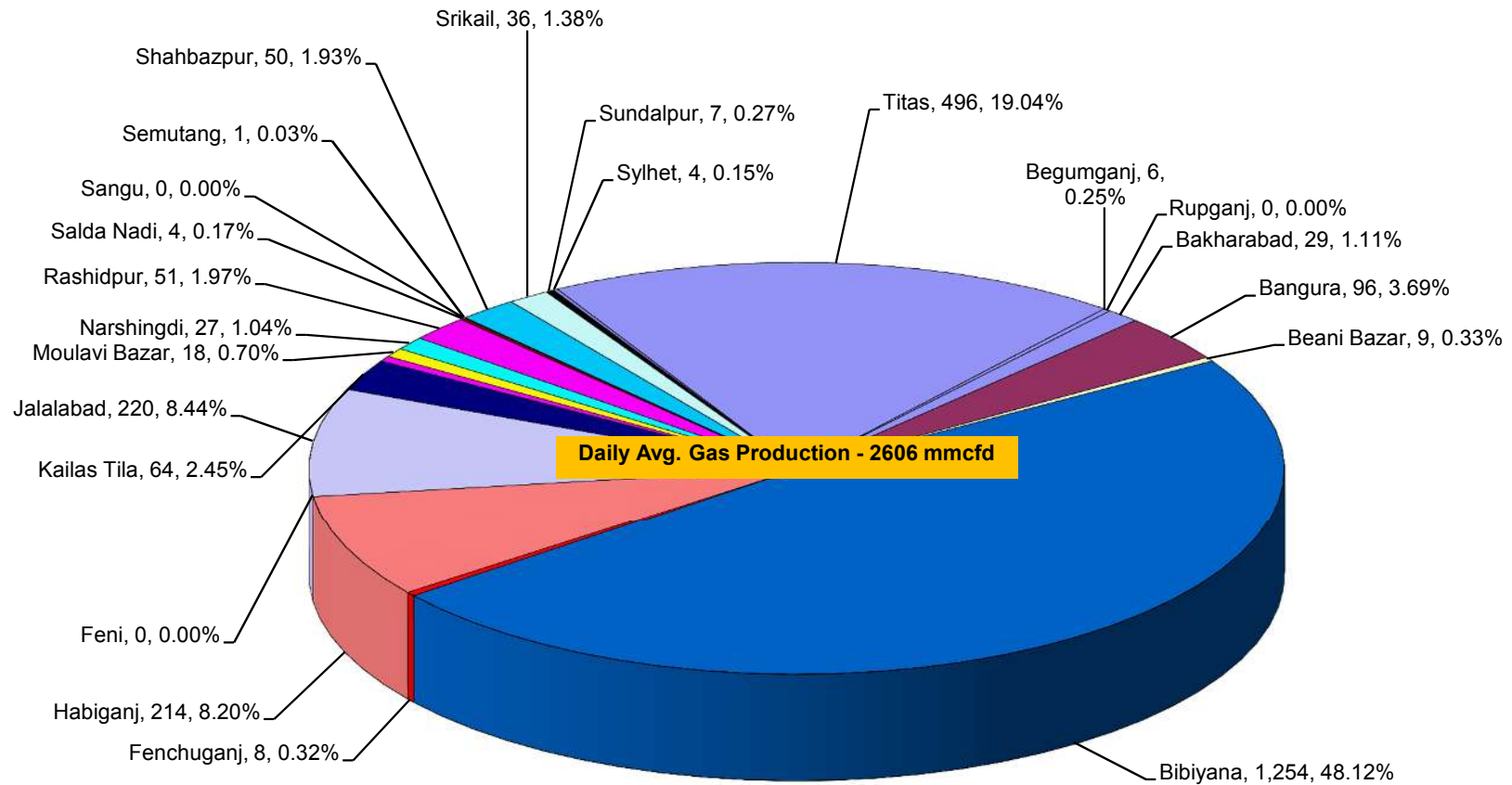
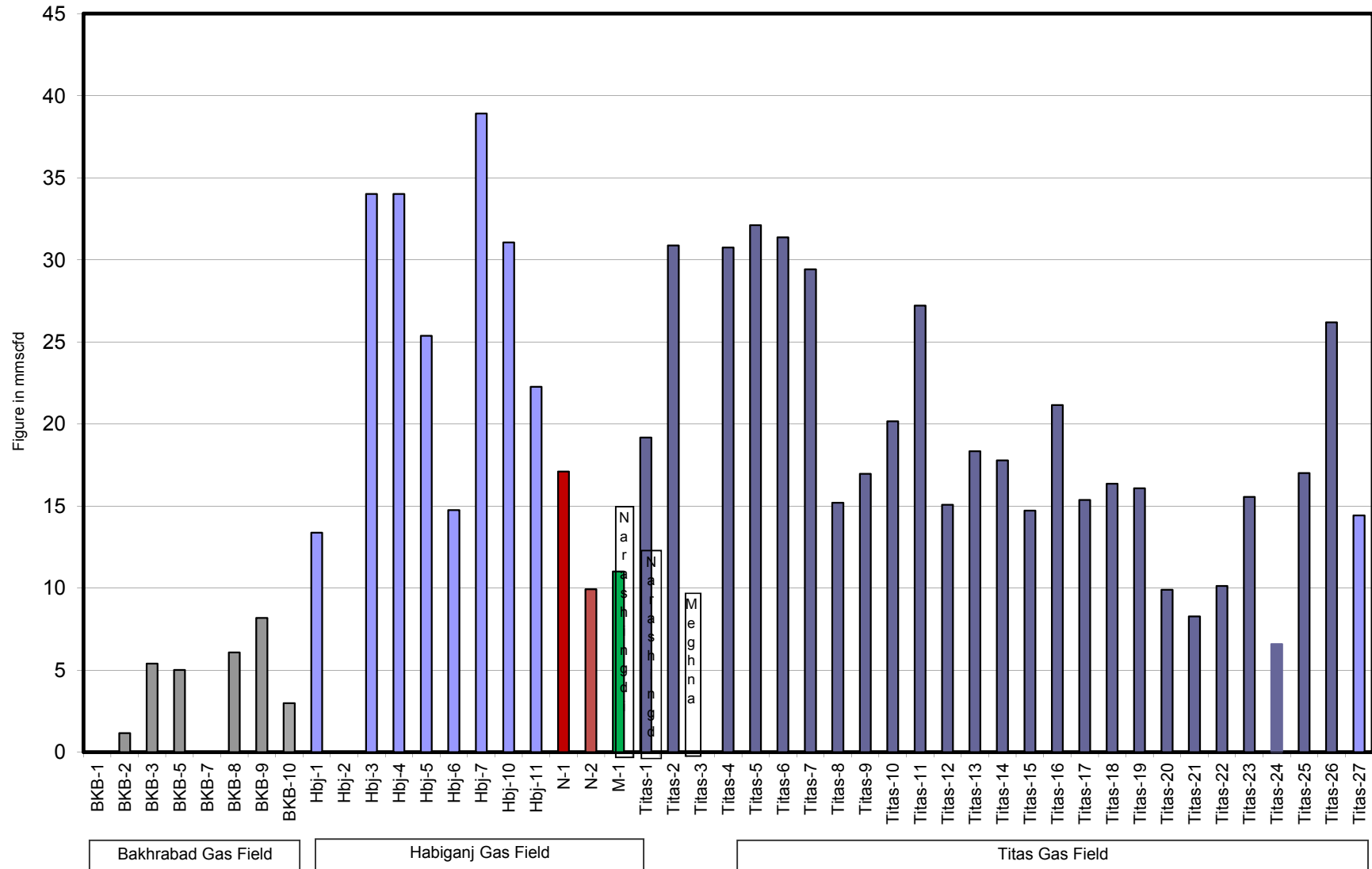


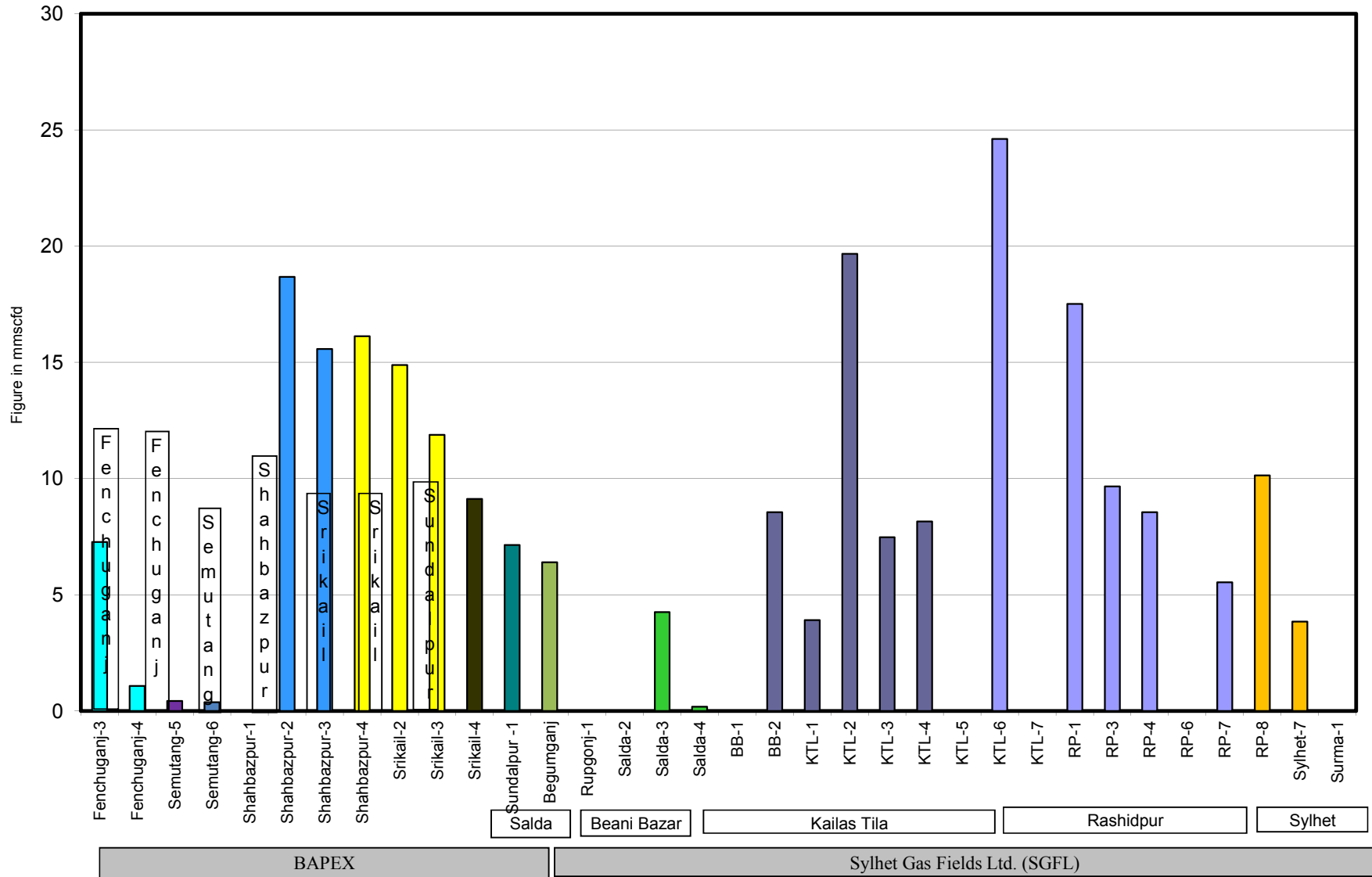
Figure in mmcf and % of total production

Wellwise Daily Avg. Production- BGFCL February 2019

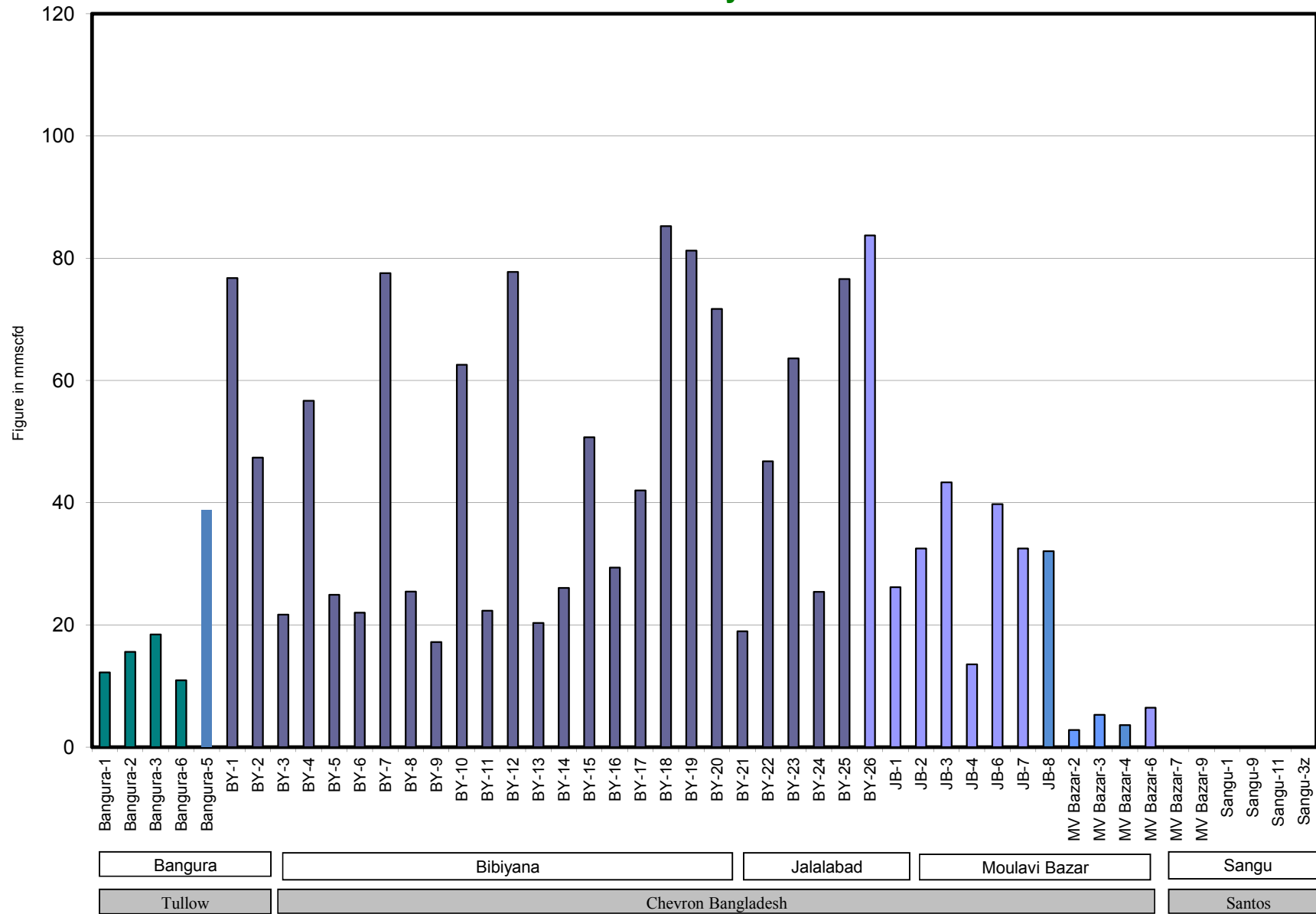


Bangladesh Gas Fields Co. Ltd. (BGFL)

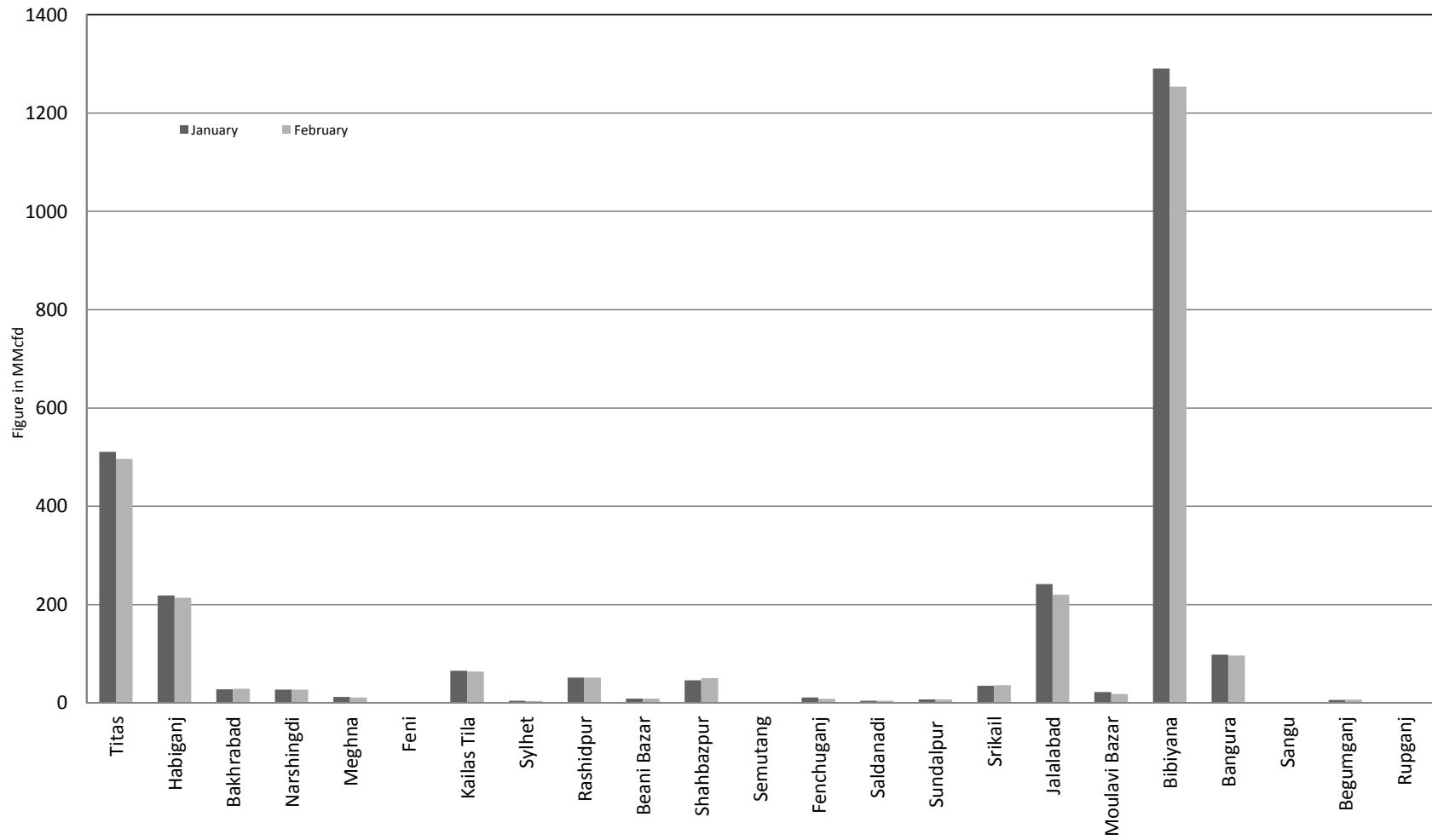
Wellwise Daily Avg. Production- Bapex and SGFL February 2019



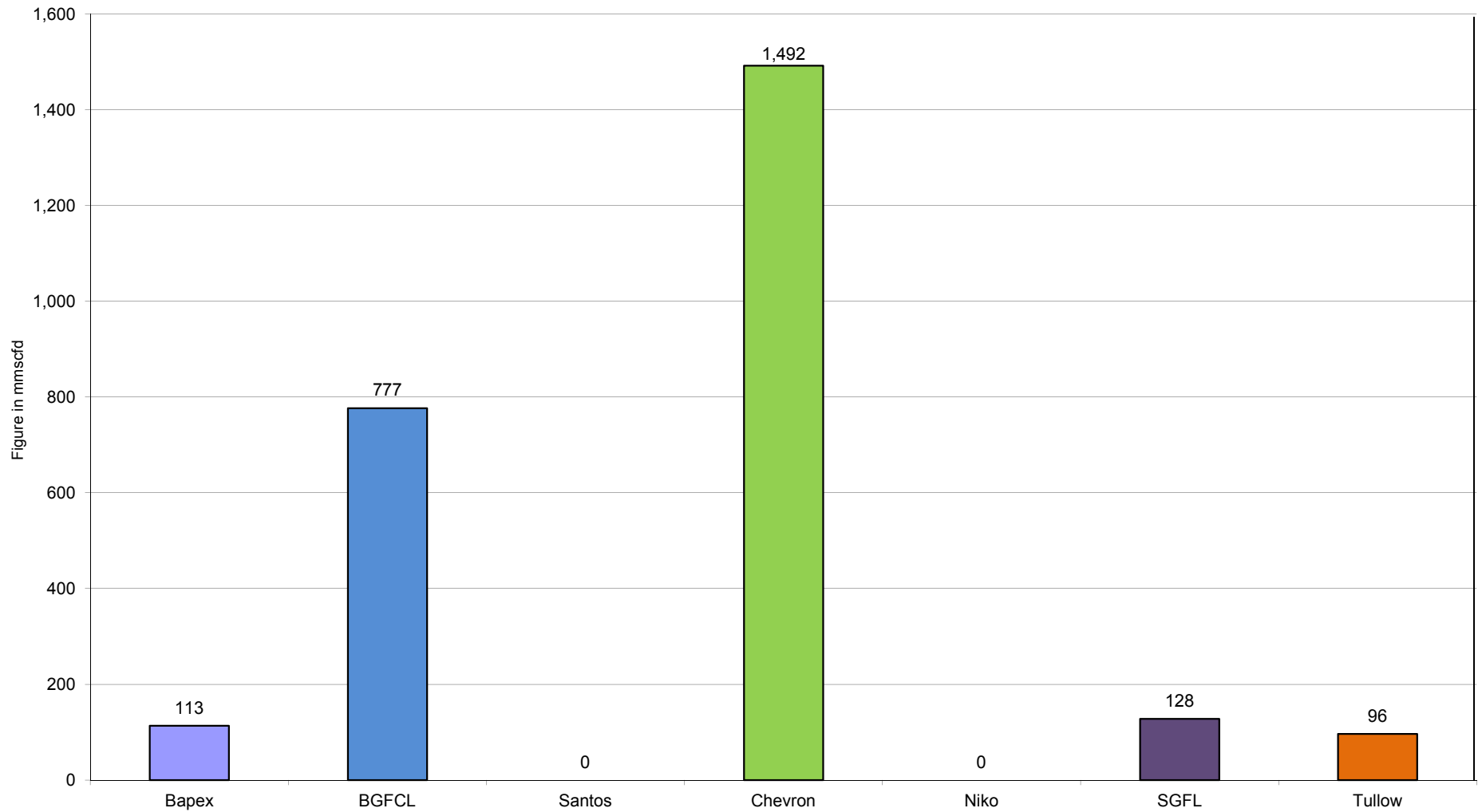
Wellwise Daily Avg. Production- IOC and JVA February 2019



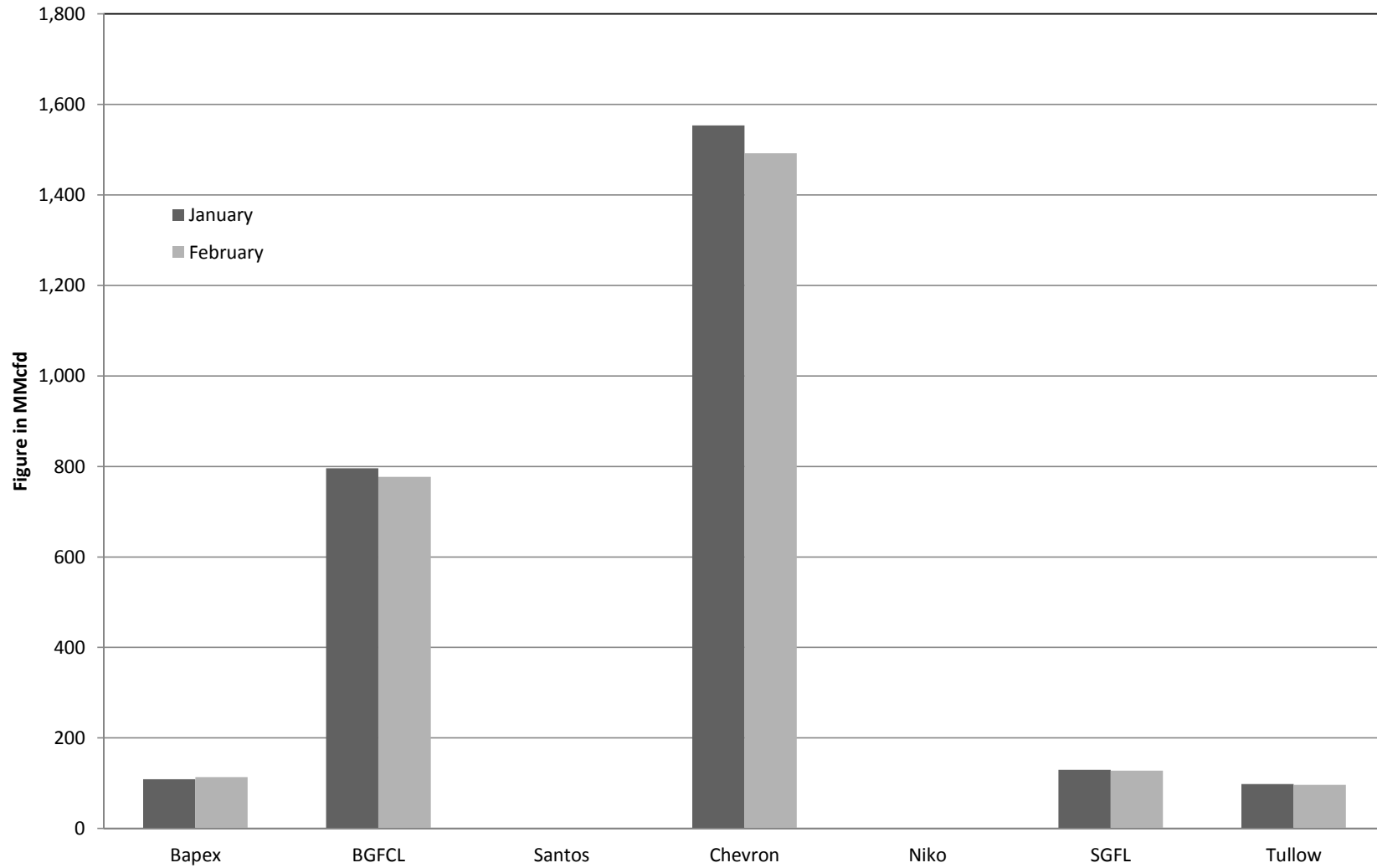
Comparison of fieldwise daily avg. Gas production between January 2019 & February 2019



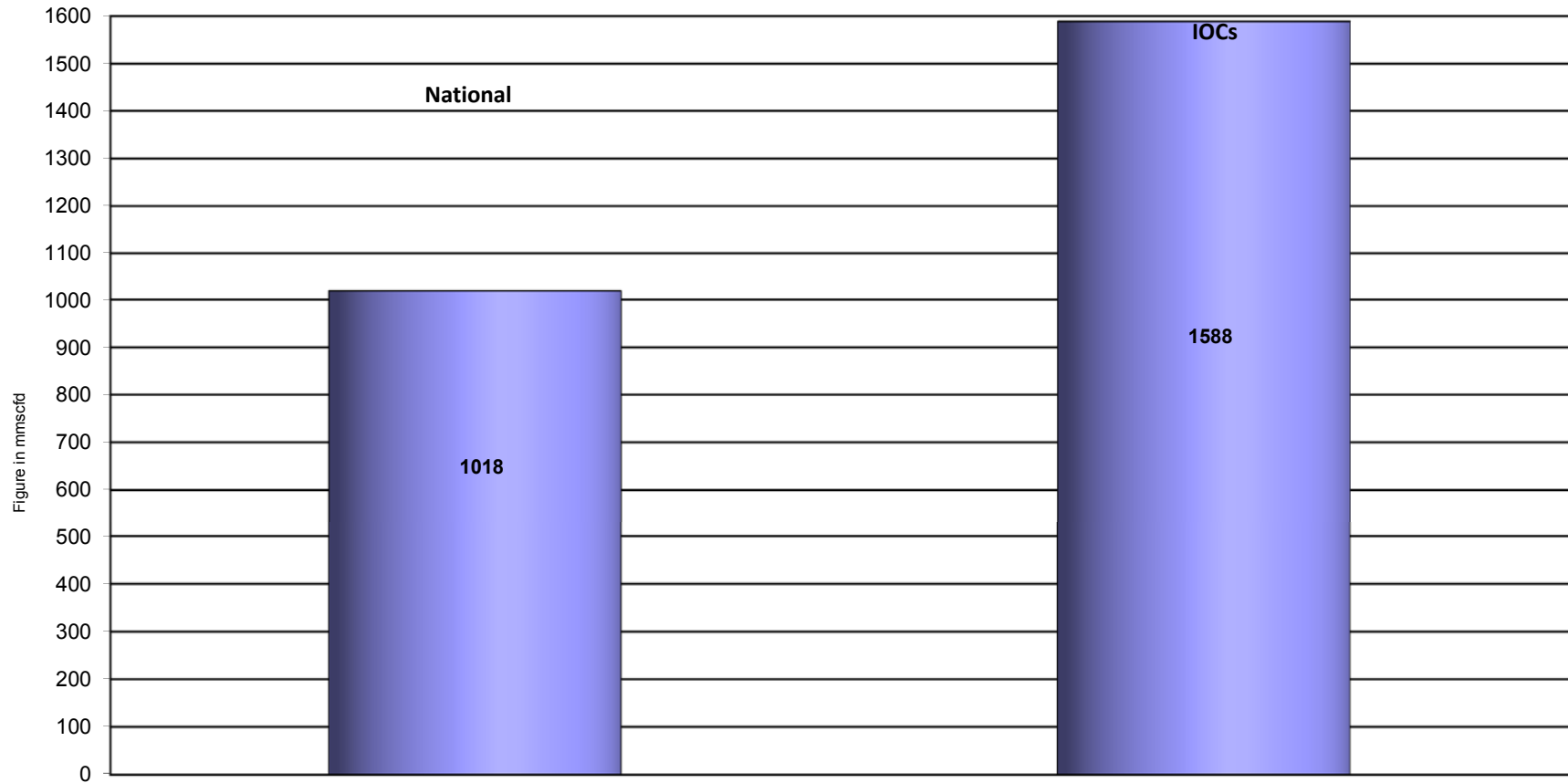
Daily Avg. Production by Operators February 2019



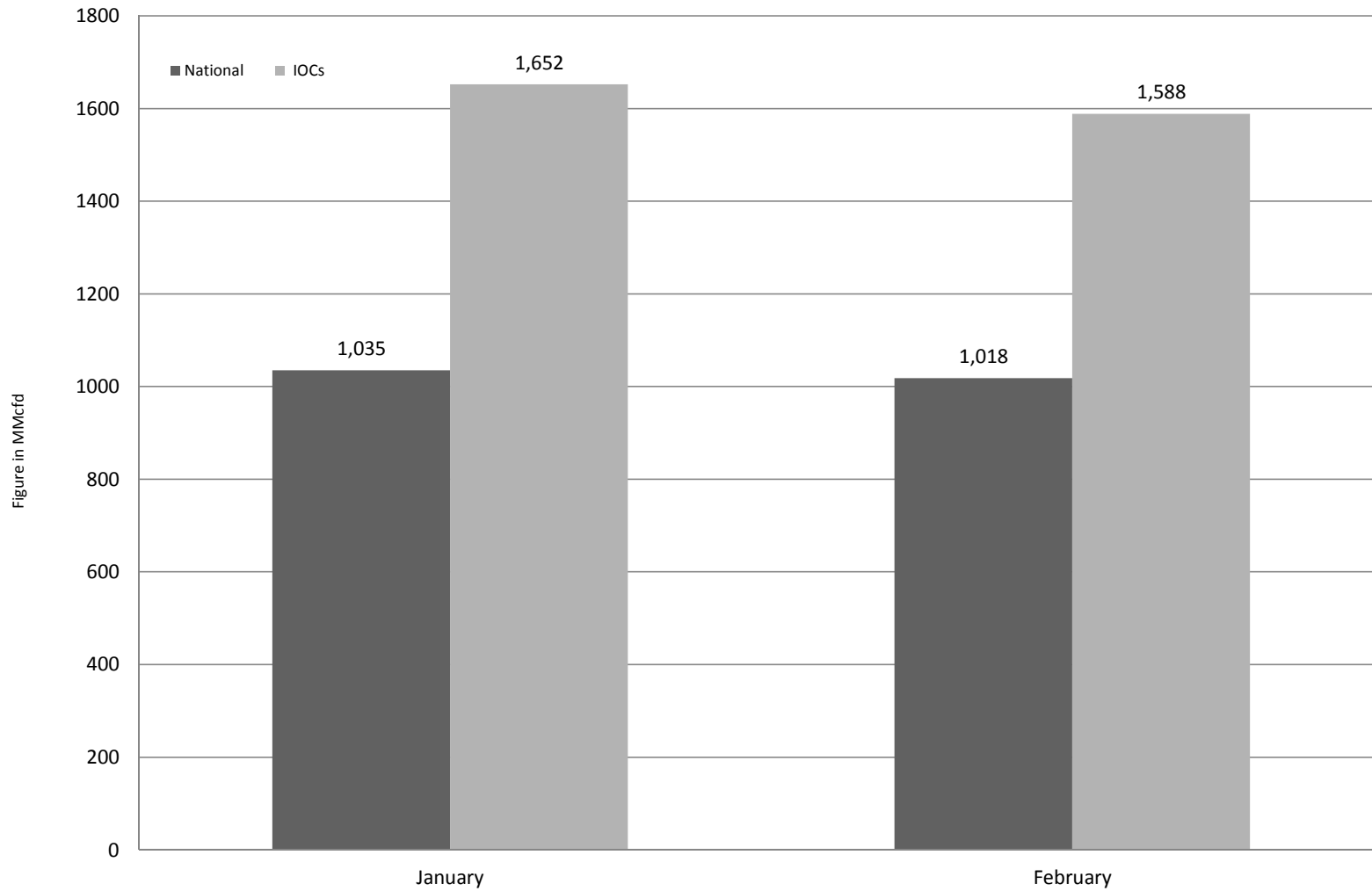
Comparison of operatorwise daily avg. Gas production between January 2019 & February 2019



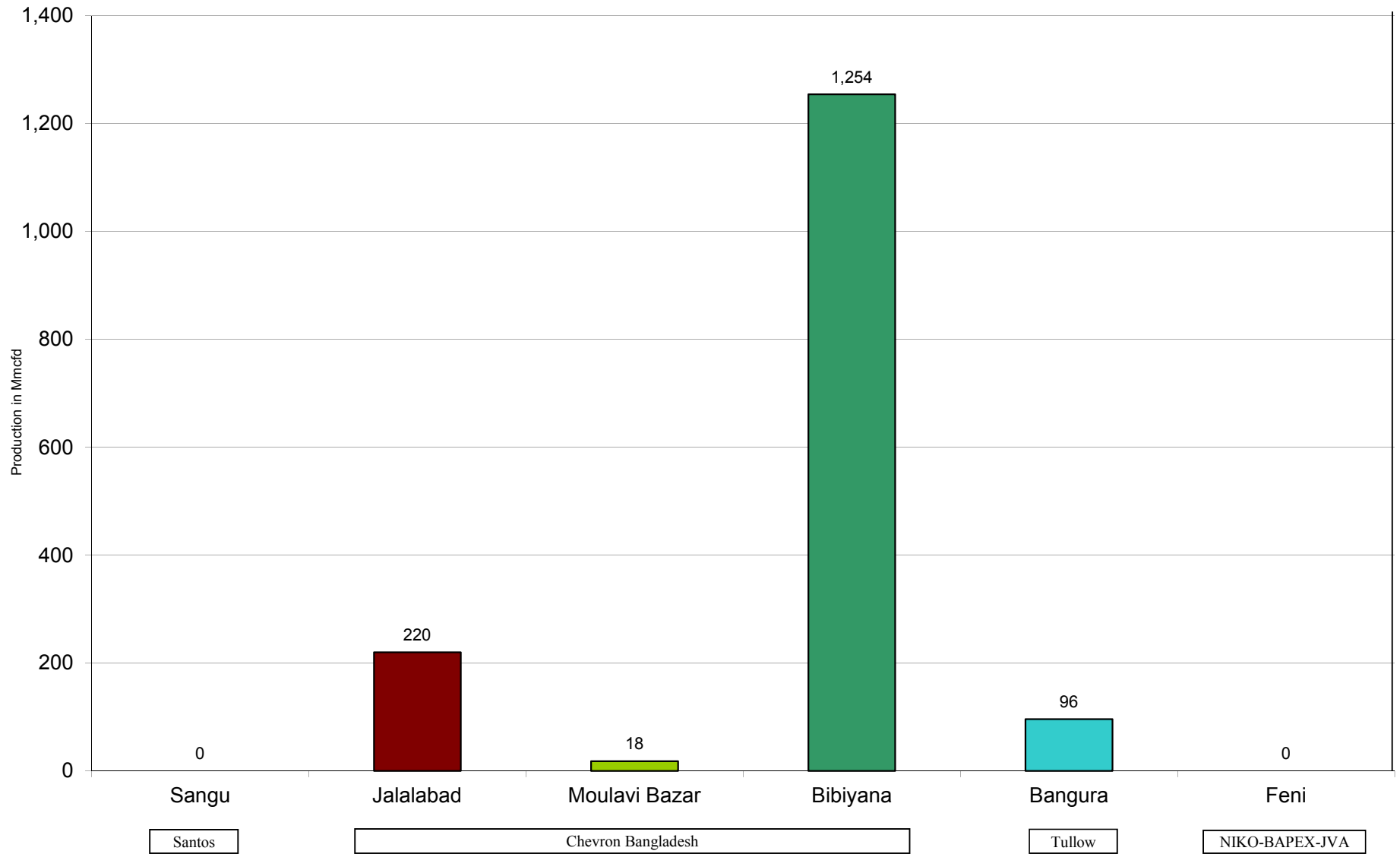
Daily Avg. Production - National Vs. IOCs February 2019



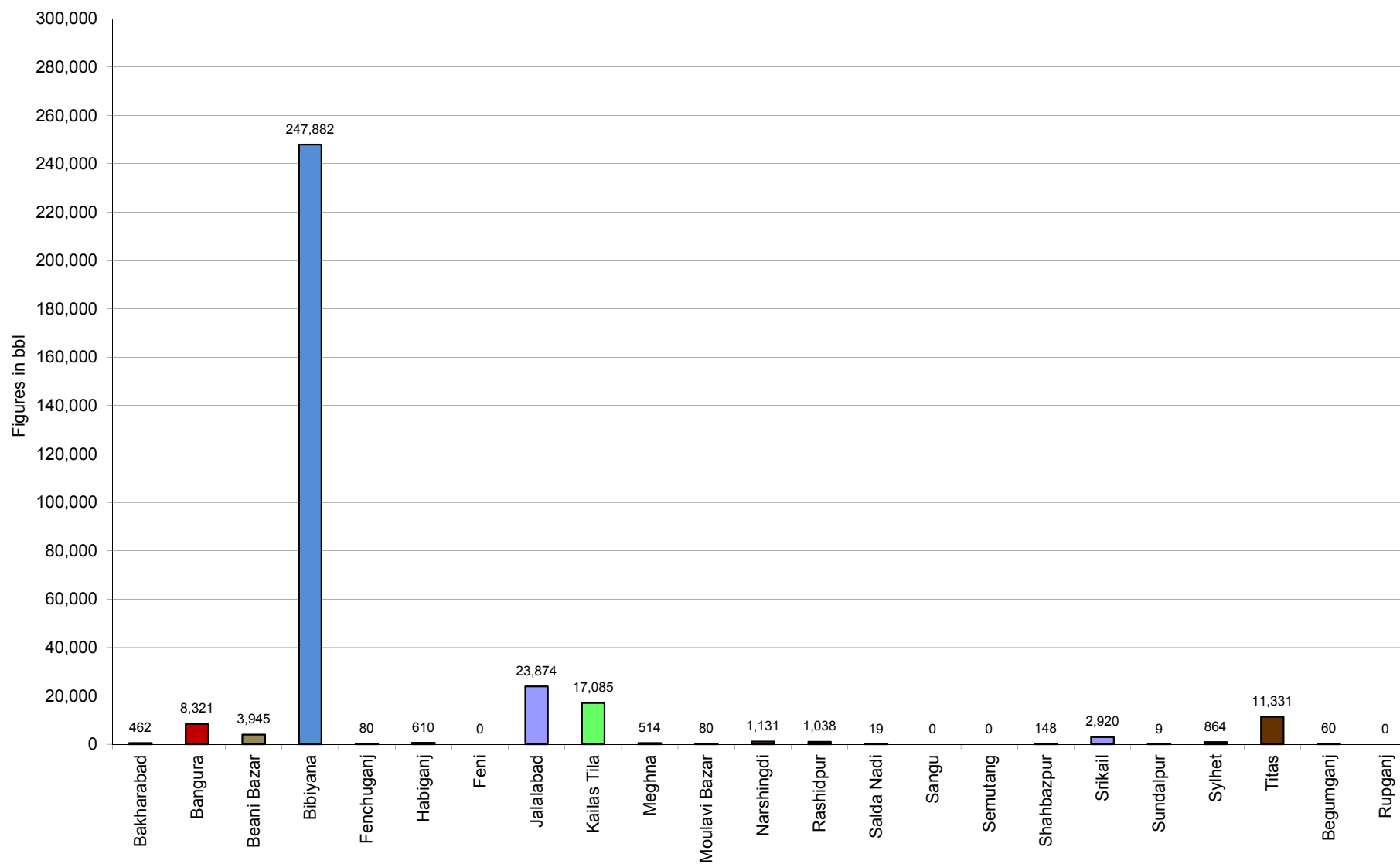
Comparison of daily avg. Gas production - National vs IOC's between January 2019 & February 2019



Daily Avg. Production - IOC and JVA February 2019



Monthly Condensate Production February 2019



Field wise Coal Reserve in Bangladesh

SI No.	Coal Basins	Proved (Mt)	Indicated (Mt)	Inferred (Mt)	Total (Mt)
1	Barapukuria	114.32	211.33	21.06+(43-64)*	346.71+(43-64)*
2	Phulbari	288	226	58	572
3	Khalashpir	-	297.57	225.92	523.49
4	Jamalganj	-	-	1053.9	1053.9
5	Dighipara	-	105	495	600
	Total	402.32	839.9	1896.88-1917.88	3139.10-3160.10

**Resources of VI Seam in second syncline are towards SW of main basin, after Wardell Armstrong*

NOTE: Reserve Figure based on Coal Sector Development Strategy (Final), HCU, PwC

Summary of Reserve and Production of Barapukuria Coal Mine As of 28 February 2019

Coal Initially Place (Proven + Probable)	346,710 kT	346.71 MT
Total Reserve of Seam VI	285,410 kT	285.41 MT
Recoverable from Seam VI Central part(Proven + Probable)	16,540 kT*	16.54 MT
Coal Production in February 2019	1.46 kT	0.00 MT
Cumulative Production as of February 2019	10,422 kT	10.42 MT
Remaining Reserve	6,118 kT	6.12 MT

NOTE: Reserve figure based on Mines and Minerals Development Report ,HCU PwC

*Figure from BCMCL, M/S Wardell Armstrong. According to Mines and Minerals Development Report ,HCU, PwC this figure is 64.8 Mt

Barapukuria Coal Mine-MPM and P Contract (BCMCL)

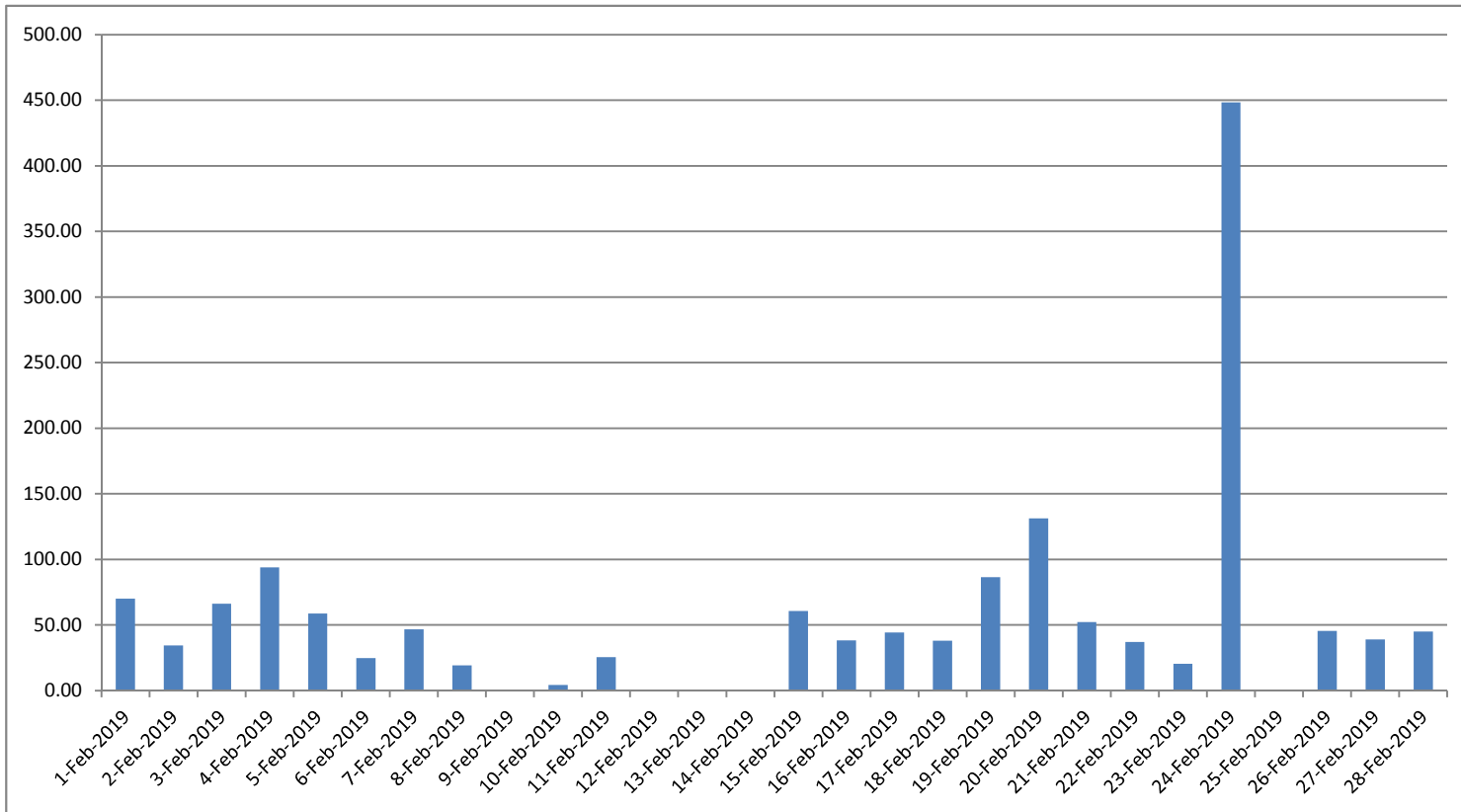
Measurement Record: Surface Belt Weigher

Measurement Period: February 2019

Day wise data	Consortium Daily Output (ton)	Consortium Cumulative Total	BCMCL Daily Output	BCMCL Cumulative Total	Remarks
1-Feb-2019	70.00	70.00	70.00	70.00	
2-Feb-2019	34.50	104.50	34.50	104.50	
3-Feb-2019	66.25	170.75	66.25	170.75	
4-Feb-2019	94.00	264.75	94.00	264.75	
5-Feb-2019	58.75	323.50	58.75	323.50	
6-Feb-2019	24.75	348.25	24.75	348.25	
7-Feb-2019	46.75	395.00	46.75	395.00	
8-Feb-2019	19.25	414.25	19.25	414.25	
9-Feb-2019	0.00	414.25	0.00	414.25	
10-Feb-2019	4.25	418.50	4.25	418.50	
11-Feb-2019	25.50	444.00	25.50	444.00	
12-Feb-2019	0.00	444.00	0.00	444.00	
13-Feb-2019	0.00	444.00	0.00	444.00	
14-Feb-2019	0.00	444.00	0.00	444.00	
15-Feb-2019	60.75	504.75	60.75	504.75	
16-Feb-2019	38.25	543.00	38.25	543.00	
17-Feb-2019	44.25	587.25	44.25	587.25	
18-Feb-2019	38.00	625.25	38.00	625.25	
19-Feb-2019	86.50	711.75	86.50	711.75	
20-Feb-2019	131.25	843.00	131.25	843.00	
21-Feb-2019	52.25	895.25	52.25	895.25	
22-Feb-2019	37.00	932.25	37.00	932.25	
23-Feb-2019	20.50	952.75	20.50	952.75	
24-Feb-2019	448.25	1,401.00	448.25	1,401.00	
25-Feb-2019	0.00	1,401.00	0.00	1,401.00	
26-Feb-2019	45.50	1,446.50	45.50	1,446.50	
27-Feb-2019	39.00	1,485.50	39.00	1,485.50	
28-Feb-2019	45.00	1,530.50	45.00	1,530.50	

less Difference in Water Content:	74.99
Less Out of Seam dilution:	0
Output (tons) measured by Belt	1,455.51
Tonnes mined in DARR	0
Net Output after removing DARR	1,455.51

Barapukuria Coal Mine Daywise Data Graph for February 2019



আসুন, যানবাহনসমূহকে অটোগ্যাসে রূপান্তর করি...

জাতীয় সম্পদ প্রাকৃতিক গ্যাস সাশ্রয় করি...

facebook

"Energy misused, cannot be excused"

আমাদের ঘরে যদি এখনো কয়েল স্টার্টার যুক্ত টিউবলাইট থেকে থাকে, আসুন আজই LED টিউবলাইট দ্বারা প্রতিস্থাপন করি।

HYDROCARBON UNIT ON FACEBOOK

“আসুন আমাদের জাতীয় সম্পদ প্রাকৃতিক গ্যাস সাশ্রয় করি”

১। **LPG** ব্যবহার করুন..

অবৈধ গ্যাস সংযোগ থেকে বিরত থাকুন

২। **CNG** নয়, অকটেন দিয়ে গাড়ি চালান...

গাড়ির ইঞ্জিনের আয়ুষ্কাল বাড়ান

চলুন আজই যানবাহনসমূহ AUTO GAS (LPG) এ রূপান্তর করি...

- * CNG এর তুলনায় LPG কনভারশনে ৫০% কম খরচ হয়
- * ৩-৫ মিনিটে ট্যাংকে ফুয়েল ভর্তি হয়, লম্বা লাইনে দাঁড়িয়ে অপেক্ষা করার প্রয়োজন পরে না
- * CNG এর তুলনায় সিলিন্ডারে জায়গা, ওজন ও প্রেশার কম দরকার
- * রক্ষণাবেক্ষণের খরচ কম
- * পেট্রলের তুলনায় AUTO GAS -এ খরচ প্রায় ৫০% কম
- * গ্যাসোলিন ও ডিজেলের তুলনায় নিঃসরণ কম

Hydrocarbon Unit

Energy & Mineral Resources Division
Ministry of Power, Energy & Mineral Resources
153, Pioneer Road
Segunbagicha, Dhaka-1000
www.hcu.org.bd