

বাংলাদেশের
সুবর্ণজয়ন্তী
Bangladesh



Gas and Coal Reserve & Production

November 2021



ENERGY DATA CENTER



HYDROCARBON UNIT

Energy and Mineral Resources Division

Preface

Monthly Report on Gas and Coal Reserve & Production was prepared and published by Hydrocarbon Unit for the first time in July 2004. The present one is the issue for November 2021. In this report, Monthly Gas, Condensate, Water and Coal production of Bangladesh has been reflected. Monthly import of Liquefied Natural Gas (LNG) has been included in the report as well. Moreover, Daily Average Gas Production; Field wise Daily Average Production; Well wise Daily Average Production; Comparison of Field wise Average Gas Production between present & previous month; Daily Average Production by Operator; Comparison of National and IOC Daily Average Production along with the graphical presentation have been depicted. Monthly Coal production data is also included in this report.

This report has been prepared based on the data directly collected from the Production companies of Petrobangla (BAPEX, BGFCL & SGFL) and IOC companies (Tullow & Chevron). Liquefied Natural Gas (LNG) import data is collected from RPGCL & Coal production data is collected from BCMCL.

It is expected that the report will be helpful as reference book and elements of interest for the concerned.

The report will also be available at HCU's website: www.hcu.gov.bd.

Abul Khayer Md. Aminur Rahman
Director General (Additional Secretary)
Hydrocarbon Unit

Executive Summary of November 2021

Total gas and condensate Production in November 2021 were 71.39 Bcf and 222072 Bbl. During the previous month i.e. October 2021, gas and condensate production were 67.35 Bcf and 233667 Bbl and in the same month of the previous year i.e. November 2020, total gas and condensate production were 74.61 Bcf and 304652 Bbl respectively. The National Oil Companies (NOC's) and International Oil Companies (IOC's) Produced 25.34 Bcf and 46.05 Bcf gas respectively in November 2021. During the previous month i.e. October 2021, gas production by the National Oil Companies (NOC's) and International Oil Companies (IOC's) were 25.58 Bcf and 46.98 Bcf respectively. In the month of November 2021, Bibiyana gas field Produced 37.41 Bcf gas and it ranked top among the gas producers. Average production from the field during the month of November 2021 was 1247 Mmcf/d. It is noted that Bibiyana gas field Produced 39.16 Bcf in October 2021.

During the month of November 2021 total production of condensate was 222072 Bbl compared to 233667 Bbl in the previous month i.e. October 2021. Bibiyana gas field Produced 151036 Bbl condensate and ranked top while Jalalabad ranked 2nd by producing 31030 Bbl.

In the month of November 2021 total coal production was 56307.43 Ton. During the previous month i.e. October 2021 total coal production was 18274.49 Ton.

Total LNG import in November 2021 was 18.74 Bcf. As a result, Total LNG Import in this FY is 106.52 Bcf and cumulative LNG import stands on 641.38 Bcf from August 2018.

Gas Reserve & Production at a glance

Gas Initially in Place (GIIP)	:	40,092.19 Bcf
Recoverable (2P)	:	29,926.10 Bcf
Cumulative Production as of November 2021	:	19,023.53 Bcf
Remaining Reserve up to November 2021	:	10,902.97Bcf
Gas Production in November 2021	:	71.39 Bcf
National Oil Company (NOC's) production in November 2021	:	25.34 Bcf
International Oil Company (IOC's) production in November 2021	:	46.05 Bcf
No. of National Oil Company (NOC's) in November 2021	:	3 (BGFCL, BAPEX, SGFL)
No. of International Oil Company (IOC's) in November 2021	:	2 (Chevron, Tullow)
Total gas fields of National Oil Company (NOC) in November 2021	:	21
Total gas fields of International Oil Company (IOC) in November 2021	:	5
Total gas wells of National Oil Company (NOC) in November 2021	:	115
Total gas wells of International Oil Company (IOC) in November 2021	:	60
No. of National Oil Company (NOC's) gas production well in November 2021	:	70
No. of Intl. Oil Company (IOC's) gas production well in November 2021	:	42
No. of National Oil company (NOC's) suspended well in November 2021	:	45
No. of International Oil company (IOC's) suspended well in November 2021	:	18
Total LNG Import in November 2021	:	18.74 Bcf
Total LNG Import from July 2021 to November 2021	:	106.52 Bcf
Cumulative LNG Import from August 2018	:	641.38 Bcf

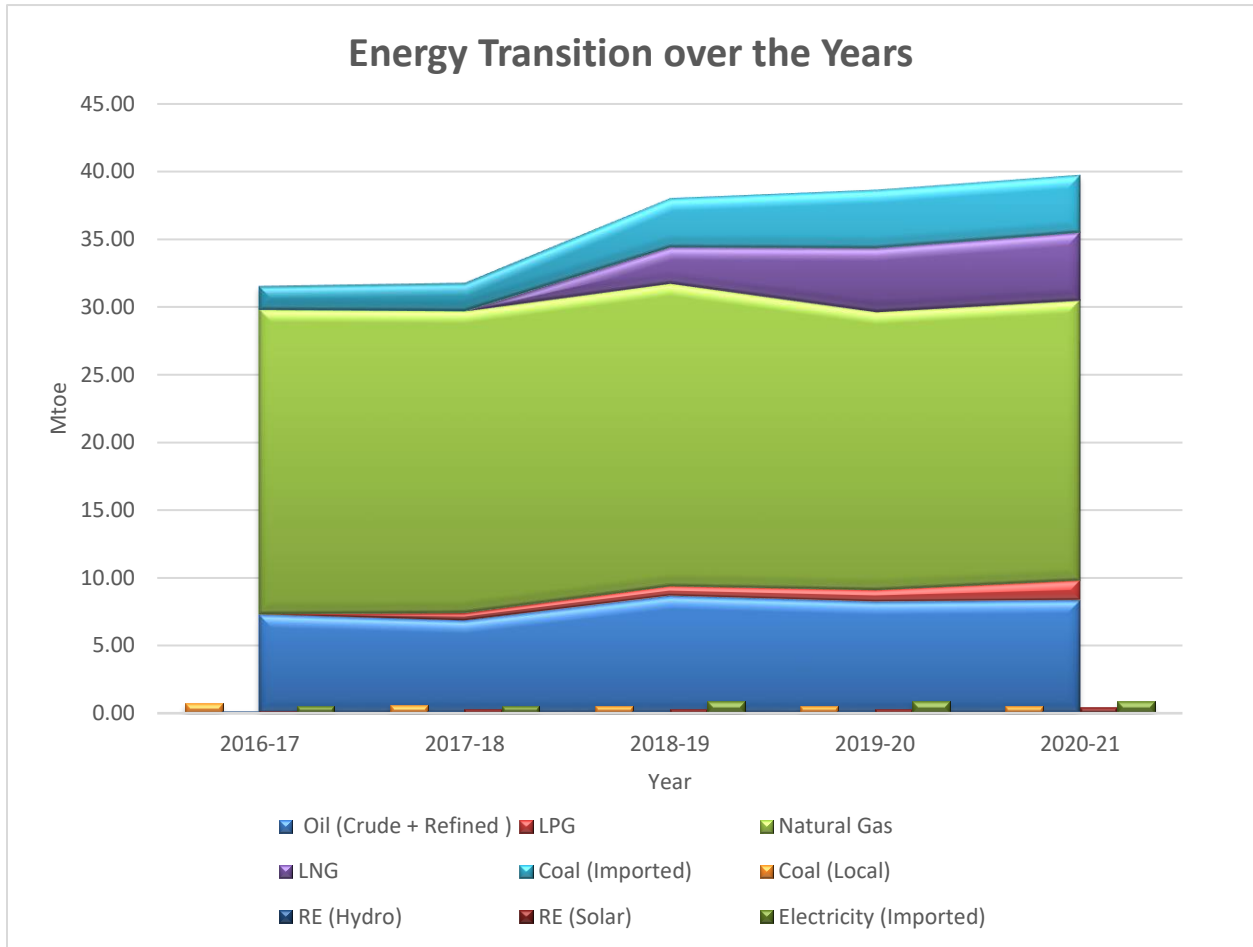


Table of Contents

Gas Report	Page No.
Summary	1
summary of Reserve and Production	2
Production comparison between October 2021 & November 2021	3
Production per well & production, reserve ratio	4
Monthly Production by Fields & Wells up to November 2021	5-12
Monthly Condensate Production by Fields up to November 2021	13-14
Monthly Water Production by Fields from November 2021	15-16
Conditions of Field and Well up to November 2021	17-21
Chart	
Well-wise Production of All fields in 2019-20	22
Reserve, Production and Remaining Reserve as of November 2021	23
Daily Average Gas Production from January 2015 to November 2021	24
Field wise Daily Average Production as of November 2021	25
Well wise Daily Average Production-BGFCL as of November 2021	26
Well wise Daily Average Production-BAPEX and SGFL, November 2021	27
Well wise Daily Average Production-IOC and JVA, November 2021	28
Comparison of Field wise Avg Gas Production between October 21 & November 21	29
Daily Average Production by Operator, November 2021	30
Comparison of Operator wise daily Avg Production between October 21 & November 21	31
Daily Average Production – National vs IOC’s, November 2021	32
Daily Avg Gas Production- National vs IOC’s between October 21 & November 21	33
Daily Average Production IOC’s and JVA, November 2021	34
Monthly Condensate Production, November 2021	35
Coal Report	
Summary	36-37
Barapukuria Coal Mine-MPM and P Contract (BCMCL)	38
Barapukuria Coal Mine Day wise Data Graph for November 2021	39
Conclusion	40

Summary of Reserve, Production & Import As of November 2021

Gas Initially Place (Proven + Probable)	40,092.19 Bcf	40.09 Tcf
Recoverable (Proven + Probable)	29,926.10 Bcf	29.93 Tcf
Gas Production in November 2021	71.39 Bcf	0.07 Tcf
Cumulative Gas Production as of November 2021	19,023.53 Bcf	19.02 Tcf
Remaining Reserve	10,902.57 Bcf	10.90 Tcf

NOTE: Reserve figure based on "Updated Report on Bangladesh Gas Reserve Estimation 2010", prepared by Gustavson Associates LLC, USA

Total LNG Import in November 2021	18.74 Bcf	0.02 Tcf
Total LNG Import from July 2021 to November 2021	106.52 Bcf	0.11 Tcf
Cumulative LNG Import from August 2018	641.38 Bcf	0.64 Tcf

Summary of Reserve and Production

(As of November 2021)

Gas Bcf



SI No.	Field	2P	GIIP	2P Reserve	Gas Prod. In Nov'21	Cum. Gas Production	Remaining Reserve	Cum. Condensate Production
1	Begumganj		47.0	33.0	0.25	8.0	25.0	2
2	Shahbazpur		415.0	261.0	1.75	77.0	184.0	13
3	Semutang		654.0	318.0	0.02	13.9	304.1	5
4	Fenchuganj		483.0	329.0	0.31	164.9	164.1	119
5	Salda Nadi		393.0	275.0	0.09	95.7	179.3	59
6	Srikail*		230.0	161.0	1.17	115.1	45.9	240
7	Sundalpur *		62.2	50.2	0.24	19.7	30.5	1
8	Rupganj		48.0	33.6	0.00	0.7	32.9	1
Bapex			2,332.2	1,460.8	3.83	494.9	965.9	439
9	Meghna		122.0	101.0	0.22	77.7	23.3	126
10	Narshingdi		405.0	345.0	0.82	228.0	117.0	459
11	Kamta		72.0	50.0	0.00	21.1	28.9	4
12	Habiganj		3,981.0	2,787.0	4.75	2,623.4	163.6	146
13	Bakhrabad		1,825.0	1,387.0	1.05	851.9	535.1	1,060
14	Titas		9,039.0	7,582.0	12.05	5,098.0	2,484.0	5,581
BGFCL			15,444.0	12,252.0	18.89	8,900.1	3,351.9	7,375
15	Sangu		976.0	771.0	0.00	489.5	281.5	37
Santos/Cairn			976.0	771.0	0.00	489.5	281.5	37
16	Bibiyana**		8,383.0	5,755.4	37.41	4,931.1	824.3	28,928
17	Moulavi Bazar**		494.0	428.0	0.47	338.4	89.6	120
18	Jalalabad**		2,716.0	1,429.3	6.20	1,485.1	0.0	11,139
Chevron			11,593.0	7,612.7	44.07	6,754.6	858.1	40,187
19	Feni		185.0	130.0	0.00	63.0	67.0	110
Niko			185.0	130.0	0.00	63.0	67.0	110
20	Kailas Tila		3,463.0	2,880.0	0.87	777.6	2,102.4	8,258
21	Sylhet		580.0	408.0	0.19	218.2	189.8	823
22	Rashidpur		3,887.0	3,134.0	1.33	677.1	2,456.9	820
23	Chattak		677.0	474.0	0.00	25.8	448.2	4
24	Beani Bazar		225.0	137.0	0.23	103.9	33.1	1,702
SGFL			8,832.0	7,033.0	2.62	1,802.7	5,230.3	11,608
25	Bangura		730.0	621.0	1.97	518.6	102.4	1,335
Tullow			730.0	621.0	1.97	518.6	102.4	1,335
26	Kutubdia		65.0	46.0	0.00	0.0	46.0	0
Total			40,092.2	29,926.5	71.39	19,023.5	10,903.0	61,091

* Preliminary reserve estimated by BAPEX

** 2P reserve estimation by Petrobangla

Production comparison between Oct'21 & Nov'21



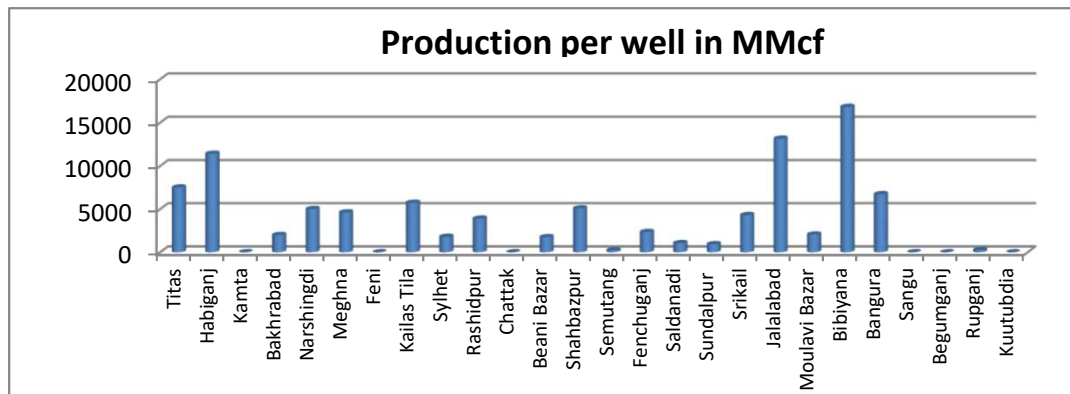
SI No.	Field	Gas Prod. (MMcf) in Oct'21	Daily Avg. (MMcfd) in Oct'21	Gas Prod. (MMcf) in Nov'21	Daily Avg. (MMcfd) in Nov'21
1	Begumganj	262	8	253	8
2	Shahbazpur	2038	66	1752	58
3	Semutang	23	1	23	1
4	Fenchuganj	315	10	308	10
5	Salda Nadi	88	3	89	3
6	Srikail	1177	38	1167	39
7	Sundalpur	241	8	237	8
8	Rupganj	0	0	0	0
Bapex		4145	134	3829	128
9	Meghna	224	7	219	7
10	Narshingdi	845	27	816	27
11	Kamta	0	0	0	0
12	Habiganj	4995	161	4750	158
13	Bakhrabad	1091	35	1052	35
14	Titas	12139	392	12054	402
BGFCL		19294	622	18892	630
15	Sangu	0	0	0	0
Santos/Cairn		0	0	0	0
16	Bibiyana	39155	1263	37408	1247
17	Moulavi Bazar	0	0	469	16
18	Jalalabad	0	0	6198	207
Chevron		39155	1263	44075	1469
19	Feni	0	0	0	0
Niko		0	0	0	0
20	Kailas Tila	894	29	867	29
21	Sylhet	217	7	192	6
22	Rashidpur	1378	44	1331	44
23	Chattak	0	0	0	0
24	Beani Bazar	237	8	228	8
SGFL		2725	88	2618	87
25	Bangura	2031	66	1975	66
Tullow		2031	66	1975	66
26	Kutubdia	0	0	0	0
Total		67350	2173	71388	2380

Production per well & production reserve ratio



HYDROCARBON UNIT
Energy & Mineral Resources Division

	No of production well	Total 2p- Recoverable	2020-21 production	production per well mmcf	production reserve ratio
Titas	26	7582	153.5	5903.85	0.020
Habiganj	8	2787	67.89	8486.25	0.024
Kamta	0	50	0	0.00	0.000
Bakhrabad	7	1387	15.02	2145.71	0.011
Narshingdi	2	345	9.09	4545.00	0.026
Meghna	1	101	3.1	3100.00	0.031
Feni	0	130	0	0.00	0.000
Kailas Tila	4	2880	20.19	5047.50	0.007
Sylhet	1	408	1.36	1360.00	0.003
Rashidpur	5	3134	17.53	3506.00	0.006
Chattak	0	474	0	0.00	0.000
Beani Bazar	1	137	3.06	3060.00	0.022
Shahbazpur	4	261	16.8	4200.00	0.064
Semutang	2	318	0.32	160.00	0.001
Fenchuganj	2	329	1.42	710.00	0.004
Saldanadi	2	275	2.17	1085.00	0.008
Sundalpur	1	50.2	2.6	2600.00	0.052
Srikail	3	161	11.19	3730.00	0.070
Jalalabad	7	1429.3	73.11	10444.29	0.051
Moulavi Bazar	4	428	5.33	1332.50	0.012
Bibiyana	26	5755.4	447.87	17225.77	0.078
Bangura	5	621	33.45	6690.00	0.054
Sangu	0	771	0	0.00	0.000
Begumganj	1	33	1.94	0.00	0.059
Rupganj	0	33.6	0	0.00	0.000
Kuutubdia	0	46	0	0.00	0.000
Total	112	29926.5	886.94	7919.11	0.030



Monthly Production by Field and Well upto November 2021



HYDROCARBON UNIT
Energy & Mineral Resources Division

Figures in mmscf

Well	Jan	Feb	Mar	Apr	May	Jun	Jul	Aug	Sep	Oct	Nov	Dec	Total	Cumulative	2020	2019	2018
Field : Bakharabad																	
BKB-1	407	357	326	335	371	325	262	274	383	409	400		3,848	153,202	4,892	3,295	0
BKB-2	0	0	0	0	0	0	0	0	0	0	0		0	87,012	63	378	445
BKB-3	163	146	158	153	154	151	156	142	132	142	136		1,632	166,099	1,864	1,757	1,989
BKB-4	0	0	0	0	0	0	0	0	0	0	0		0	55,872	0	0	
BKB-5	141	127	120	106	110	103	108	108	125	132	127		1,308	63,579	1,703	1,757	1,822
BKB-6	0	0	0	0	0	0	0	0	0	0	0		0	50,069	0	0	0
BKB-7	0	0	0	0	0	0	0	0	0	0	0		0	107,750	0	0	0
BKB-8	252	227	248	238	240	232	240	237	221	232	221		2,588	134,383	2,969	2,565	2,017
BKB-9	170	150	165	160	156	147	146	133	102	110	104		1,544	27,422	2,171	2,585	3,332
BKB-10	75	67	70	66	68	66	68	68	67	67	63		746	6,527	1,015	1,092	1,297
Field Total:	1,209	1,074	1,087	1,059	1,098	1,023	981	962	1,031	1,091	1,052	0	11,667	851,915	14,678	13,429	10,903
Daily Avg.(mmscfd)	39	38	35	35	35	34	32	31	34	35	35	0	35		40	37	30
Field : Bangura																	
Bangura-1	339	304	270	322	306	315	329	329	306	308	308		3,435	100,467	3,640	4,138	4,615
Bangura-2	399	358	356	364	326	370	387	387	359	363	363		4,031	93,221	4,340	5,312	6,802
Bangura-3	489	438	394	444	397	340	350	473	363	424	444		4,555	112,435	4,958	6,195	7,265
Bangura-6	235	211	145	214	191	207	146	227	207	208	214		2,205	18,369	3,700	3,518	4,847
Bangura-5	1,351	1,186	1,261	1,195	1,087	1,097	897	1,004	854	728	646		11,307	194,147	15,921	16,177	8,410
Field Total:	2,813	2,498	2,426	2,538	2,307	2,330	2,109	2,420	2,088	2,031	1,975	0	25,533	518,640	32,559	35,340	31,940
Daily Avg.(mmscfd)	91	89	78	85	74	78	68	78	70	66	66	0	76		89	97	88
Field : Beani Bazar																	
BB-1	0	0	0	0	0	0	0	0	0	0	0	0	0	35,481	0	0	0
BB-2	245	219	243	236	239	229	237	235	231	237	228		2,578	68,389	2,940	3,135	3,276
Field Total:	245	219	243	236	239	229	237	235	231	237	228	0	2,578	103,870	2,940	3,135	3,276
Daily Avg.(mmscfd)	8	8	8	8	8	8	8	8	8	8	8	0	8		8	9	9
Field : Bibiyana																	
BY-1	2,188	1,947	1,989	1,914	1,755	1,828	1,400	1,837	1,777	1,676	1,705		20,017	443,640	26,283	29,455	21,743
BY-2	1,070	942	886	869	773	791	673	784	795	794	760		9,137	313,773	12,748	17,462	21,388
BY-3	1,350	954	1,660	1,556	1,508	1,412	1,382	1,404	1,408	1,412	1,217		15,262	269,419	14,326	4,562	6,249
BY-4	1,836	1,653	1,676	1,605	1,483	1,513	1,145	1,508	1,462	1,471	1,409		16,763	244,754	22,661	24,793	28,559
BY-5	122	512	1,032	989	925	938	691	938	920	925	880		8,872	192,448	5,441	6,168	6,131
BY-6	138	331	1,607	1,528	1,425	1,493	1,249	1,431	1,444	1,450	1,368		13,463	251,518	7,419	9,140	11,057
BY-7	1,791	1,610	1,624	1,562	1,471	1,484	1,097	1,513	1,460	1,457	1,389		16,457	309,495	21,873	26,581	23,155
BY-8	1,793	1,617	1,646	1,602	1,607	1,647	1,510	1,697	1,646	1,688	1,617		18,071	170,627	9,776	8,538	8,921
BY-9	1,768	1,585	1,639	1,603	1,507	1,601	1,487	1,671	1,653	1,683	1,629		17,827	155,070	7,462	5,164	4,093

Monthly Production by Field and Well upto November 2021



HYDROCARBON UNIT
Energy & Mineral Resources Division

Figures in mmscf

Well	Jan	Feb	Mar	Apr	May	Jun	Jul	Aug	Sep	Oct	Nov	Dec	Total	Cumulative	2020	2019	2018	
BY-10	1,769	1,594	1,630	1580	1,490	1,547	1423	1,578	1,553	1,595	1513		17,271	391,944	16,678	22,997	30,954	
BY-11	2,125	1,910	1,927	1918	1,797	1,858	1709	1,908	1,878	1,909	1829		20,767	168,906	19,194	8,983	12,147	
BY-12	1,810	1,644	1,680	1629	1,602	1,663	1523	1,691	1,670	1,701	1614		18,226	183,003	17,675	24,399	6,835	
BY-13	2,239	1,995	2,046	1953	1,844	1,913	1740	1,927	1,878	1,890	1813		21,240	126,877	21,893	10,785	13,171	
BY-14	2	0	1	86	549	1,539	1290	1,654	1,649	1,664	1587		10,020	118,827	9,202	8,991	11,523	
BY-15	1,446	1,258	1,230	1335	1,229	1,208	1103	1,206	1,184	1,185	1126		13,509	152,783	20,428	21,925	24,295	
BY-16	2,178	1,937	1,979	1901	1,838	1,827	1613	1,825	1,775	1,796	1713		20,381	104,248	12,548	10,246	9,264	
BY-17	1,375	1,098	1,165	1139	1,086	1,155	1102	114	1,089	1,125	1106		11,553	125,138	17,109	18,604	17,603	
BY-18	2,109	1,888	1,935	1876	1,794	1,822	1476	1,858	1,826	1,851	1772		20,206	194,301	26,284	30,009	31,890	
BY-19	1,986	1,779	1,822	1753	1,621	1,700	1546	1,683	1,655	1,674	1601		18,818	101,989	23,886	27,207	8,144	
BY-20	1,809	1,631	1,648	1580	1,549	1,566	1407	1,548	1,586	1,610	1536		17,468	99,985	21,972	22,699	7,840	
BY-21	2,062	1,848	1,893	1838	1,786	1,784	1597	1,756	1,772	1,816	1742		19,893	84,332	20,638	8,577	9,670	
BY-22	1,413	1,229	1,287	1255	1,270	1,276	1108	1,308	1,274	1,287	1228		13,935	158,000	16,774	19,492	24,755	
BY-23	1,855	1,652	1,701	1732	1,736	1,776	1408	1,802	1,769	1,797	1719		18,947	118,378	22,066	25,318	32,043	
BY-24	814	817	1,013	937	936	989	735	30	2	15	3		6,291	85,028	10,304	10,269	13,268	
BY-25	1,996	1,767	1,838	1785	1,735	1,734	1568	1,763	1,729	1,753	1679		19,348	173,949	22,625	26,797	28,306	
BY-26	2,168	1,948	1,960	1945	1,887	1,895	1536	1,925	1,899	1,929	1853		20,945	192,686	26,748	29,429	33,853	
Field Total:	41212	37143	40513	39468	38202	39961	34517	38358	38752	39155	37408	0	424,689	4,931,119	454,012	458,589	446,855	
Daily Avg.(mmscfd)	1329	1,327	1307	1316	1232	1332	1113	1,237	1,292	1,263	1,247	0	1,272		1,240	1,256	1,224	
Field :	Chattak																	
Ch-1	Production Suspended													25,834				
Field Total:	0			0	0	0	0	0	0	0	0	0	25,834					
Daily Avg.(mmscfd)	0			0	0	0	0	0	0	0	0	0	0	0	0	0	0	
Field :	Fenchuganj																	
Fenchuganj-2														0	38,169	0	0	0
Fenchuganj-3	154	148	159	163	132	123	56	0	0	0	0		936	94,998	1,547	1,877	3,186	
Fenchuganj-4	0	0	0	0	283	307	312	321	308	315	308		2,155	31,736	3	305	809	
Field Total:	154	148	159	163	415	431	369	321	308	315	308	0	3,090	164,903	1,550	2,182	3,994	
Daily Avg.(mmscfd)	5	5	5	5	13	14	12	10	10	10	10	0	9		4	6	11	
Field :	Feni																	
Feni-1	Production Suspended								0	0	0	34,214						
Feni-2	Production Suspended								0	0	0	6,119						
Feni-3	Production Suspended								0	0	0	2,176						

Monthly Production by Field and Well upto November 2021



HYDROCARBON UNIT

Energy & Mineral Resources Division

Figures in mmscf

Well	Jan	Feb	Mar	Apr	May	Jun	Jul	Aug	Sep	Oct	Nov	Dec	Total	Cumulative	2020	2019	2018
Feni-4	Production Suspended								0	0				14,386			
Feni-5	Production Suspended								0	0				6,127			
Field Total:													63,023				
Daily Avg.(mmscfd)																	
Field :	Habiganj																
Hbj-1	0	192	179	141	153	131	125	102	80	60	56		1,219	287,102	3,651	4,124	2,207
Hbj-2	0	0	0	0	0	0	0	0	0	0	0		0	275,704	0	0	0
Hbj-3	805	676	748	721	735	715	708	746	725	748	723		8,049	406,105	9,952	10,947	13,155
Hbj-4	805	676	748	721	735	715	708	746	725	748	723		8,049	400,563	9,952	10,947	13,155
Hbj-5	715	646	717	691	704	689	684	715	694	717	693		7,665	322,935	8,620	8,977	9,497
Hbj-6	469	422	468	453	460	448	436	466	453	468	452		4,994	177,857	5,305	5,349	5,487
Hbj-7	1,210	1,090	1,202	1,170	1,195	1,159	1,166	1,203	1,161	1,205	1,166		12,928	293,989	13,671	14,272	14,533
Hbj-8	0	0	0	0	0	0	0	0	0	0	0		0	11,023	0	0	0
Hbj-9	0	0	0	0	0	0	0	0	0	0	0		0	52,652	0	0	0
Hbj-10	869	756	832.1	763	767.2	740	688.5	710	685	638	595		8,043	281,560	9,961	10,423	13,928
Hbj-11	463	392	431.4	419.1	428	413	399.2	432	417	412	341		4,548	113,870	6,094	6,920	9,579
Field Total:	5,336	4,848	5,326	5,078	5,177	5,009	4916	5,120	4,939	4,995	4,750	0	55,494	2,623,359	67,206	71,959	81,540
Daily Avg.(mmscfd)	172	173	172	169	167	167	159	165	165	161	158	0	166		184	197	223
Field :	Jalalabad																
JB-1	849	762	794	747	708	713	497	667	707	0	785		7,228	271,412	9,224	9,191	10,469
JB-2	1,043	935	987	950	919	913	617	877	902	0	976		9,118	311,758	11,644	11,400	12,973
JB-3	1,373	1,231	1,292	1,269	1,219	1,227	813	1,177	1,201	0	1,283		12,084	383,003	15,132	15,263	17,399
JB-4	726	647	677	585	551	527	373	671	756	0	839		6,351	297,472	7,355	4,766	5,821
JB-6	1,385	1,232	1,337	1,307	1,273	1,255	887	1,163	1,213	0	1,297		12,349	101,510	14,814	15,021	17,364
JB-7	0	0	0	0	0	0	0	0	4	0	1		6	43,510	2,718	11,396	13,053
JB-8	1,085	968	1,050	1,033	999	972	697	910	947	0	1,017		9,677	76,478	11,643	11,228	12,793
Field Total:	6,461	5,775	6,136	5,891	5,669	5,606	3884	5,465	5,729	0	6,198	0	56,814	1,485,144	72,531	78,265	89,872
Daily Avg.(mmscfd)	208	206	198	196	183	187	125	176	191	0	207	0	170		198	214	246
Field :	Kailas Tila																
KTL-1	0	0	0	0	0	0	0	0	0	0	0		0	205,181	0	371	462

Monthly Production by Field and Well upto November 2021



HYDROCARBON UNIT
Energy & Mineral Resources Division

Figures in mmscf

Well	Jan	Feb	Mar	Apr	May	Jun	Jul	Aug	Sep	Oct	Nov	Dec	Total	Cumulative	2020	2019	2018
KTL-2	369	299	250	193	99	81	65	12	0	0	0		1,368	192,972	6,291	7,166	7,190
KTL-3	0	0	0	0	0	0	0	0	0	0	0		0	140,672	269	2,583	2,947
KTL-4	167	152	168	162	167	160	158	126	123	127	123		1,633	102,506	2,139	2,639	3,336
KTL-5	0	0	0	0	0	0	0	0	0	0	0		0	17,923	0	0	0
KTL-6	756	690	763	738	761	728	758	755	731	766	743		8,191	117,571	9,249	9,042	8,950
KTL-7	0	0	0	0	0	0	0	0	0	0	0		0	816	0	0	0
Field Total:	1,292	1,142	1,182	1,093	1,026	969	981	892	854	894	867	0	11,193	777,641	17,949	21,801	22,886
Daily Avg.(mmscfd)	42	41	38	36	33	32	32	29	28	29	29	0	34		49	60	63
Field : Kamta																	
Kamta-1	Production Suspended													21,139			
Field Total:														21,139			
Daily Avg.(mmscfd)																	
Field : Meghna																	
M-1	218	198	211	209	219	210	222	229	215	224	219		2,373	77,750	2,945	3,458	4,538
Field Total:	218	198	211	209	219	210	222	229	215	224	219	0	2,373	77,750	2,945	3,458	4,538
Daily Avg.(mmscfd)	7	7	7	7	7	7	7	7	7	7	7	0	7		8	9	12
Field : Moulavi Bazar																	
MV Bazar-2	57	34	34	39	28	34	19	26	27	0	32		330	56,354	1,217	770	2,302
MV Bazar-3	335	305	238	286	220	261	142	213	208	0	252		2,460	166,138	3,848	2,022	3,712
MV Bazar-4	72	71	54	59	70	71	52	73	54	0	48		624	60,004	266	1,047	3,103
MV Bazar-5	0	0	0	0	0	0	0	0	0	0	0			66			
MV Bazar-6	98	84	82	92	81	118	82	155	125	0	137		1,053	19,816	529	1,886	1,734
MV Bazar-7	0	0	0	0	0	0	0	0	0	0	0		0	5,648	0	4	21
MV Bazar-9	0	0	0	0	0	0	0	0	0	0	0		0	30,337	0	1	1
Field Total:	562	494	408	475	399	483	295	467	414	0	469	0	4,466	338,363	5,859	5,730	10,872
Daily Avg.(mmscfd)	18	18	13	16	13	16	10	15	14	0	16	0	13		16	16	30
Field : Narshingdi																	
N-1	502	445	504	464	491	482	488	492	468	496	482		5,313	161,530	5,960	5,663	6,181
N-2	324	268	352	324	338	321	355	351	344	349	334		3,659	66,422	3,661	3,732	3,705
Field Total:	825	712	856	788	828	804	844	843	812	845	816	0	8,972	227,952	9,621	9,395	9,886

Monthly Production by Field and Well upto November 2021



HYDROCARBON UNIT
Energy & Mineral Resources Division

Figures in mmscf

Well	Jan	Feb	Mar	Apr	May	Jun	Jul	Aug	Sep	Oct	Nov	Dec	Total	Cumulative	2020	2019	2018
Daily Avg.(mmscfd)	27	25	28	26	27	27	27	27	27	27	27	0	27		26	26	27
Field : Rashidpur																	
RP-1	557	502	553	539	543	537	546	563	546	562	546		5,994	185,809	6,447	6,305	6,505
RP-2	0	0	0	0	0	0	0	0	0	0	0		0	82,474	0	0	
RP-3	155	165	200	209	217	210	217	217	210	217	210		2,227	139,769	2,891	3,443	3,541
RP-4	222	200	223	215	216	218	227	230	223	232	225		2,432	135,868	2,655	2,886	3,227
RP-5	0	0	0	0	0	0	0	0	0	0	0		0	25,647	0	0	
RP-6	0	0	0	0	0	0	0	0	0	0	0		0	9,983	0	0	0
RP-7	140	126	136	132	132	134	136	138	134	143	136		1,488	69,228	1,628	1,786	2,096
RP-8	258	228	248	238	243	233	237	233	221	224	215		2,579	28,355	3,228	3,515	3,696
Field Total:	1,333	1,222	1,361	1,334	1,352	1,332	1,363	1,380	1,334	1,378	1,331	0	14,719	677,132	16,849	17,936	19,065
Daily Avg.(mmscfd)	43	44	44	44	44	44	44	45	44	44	44	0	44		46	49	52
Field : Salda Nadi																	
Salda-1	0	0	0	0	0	0	0	0	0	0	0	0	0	36,904	0	0	0
Salda-2	0	0	0	0	0	0	0	0	0	0	0	0	0	28,495	0	0	0
Salda-3	108	72	83	50	48	71	66	74	71	78	79		801	29,903	1,712	1,809	1,067
Salda-4	30	15	9	6	3	10	10	12	11	10	10		127	365	92	29	70
Field Total:	138	87	92	57	51	81	76	86	82	88	89	0	928	95,667	1,804	1,838	1,137
Daily Avg.(mmscfd)	4	3	3	2	2	3	2	3	3	3	3	0	3		5	5	3
Field : Sangu																	
Sangu-1	0	0	0	0	0	0	0	0	0	0	0	0	0	116,191	0	0	0
Sangu-3z	0	0	0	0	0	0	0	0	0	0	0	0	0	131,796	0	0	0
Sangu-4	0	0	0	0	0	0	0	0	0	0	0	0	0	87,280			
Sangu-5	0	0	0	0	0	0	0	0	0	0	0	0	0	61,674			
Sangu-7	0	0	0	0	0	0	0	0	0	0	0	0	0	18,202			
Sangu-8	0	0	0	0	0	0	0	0	0	0	0	0	0	37,619			
Sangu-9	0	0	0	0	0	0	0	0	0	0	0	0	0	30,638	0	0	0
Sangu-10	Production Suspended						0	0	0	0	0	0	0				
Sangu-11	0	0	0	0	0	0	0	0	0	0	0	0	0	6,067	0	0	0
Field Total:	0	0	0	0	0	0	0	0	0	0	0	0	0	489,467	0	0	0

Monthly Production by Field and Well upto November 2021



HYDROCARBON UNIT
Energy & Mineral Resources Division

Figures in mmscf

Well	Jan	Feb	Mar	Apr	May	Jun	Jul	Aug	Sep	Oct	Nov	Dec	Total	Cumulative	2020	2019	2018
Daily Avg.(mmscfd)	0	0	0	0	0	0	0	0	0	0	0	0	0		0	0	0
Field :	Semutang																
Semutang-5	3	0	0	0									3	12,311	104	140	291
Semutang-6	21	22	25	26	27	25	25	24	24	23	23		265	1,586	204	161	84
Field Total:	24	22	25	26	27	25	25	24	24	23	23	0	268	13,898	308	301	375
Daily Avg.(mmscfd)	1	1	1	1	1	1	1	1	1	1	1	0	1		1	1	1
Field :	Shahbazpur																
Shahbazpur-1	0	0	0	0	32	16	0	0	0	0	0		48	22,533	254	874	134
Shahbazpur-2	548	40	177	446	457	583	612	671	658	676	634		5,503	27,909	5,129	6,196	6,650
Shahbazpur-3	526	569	613	584	618	631	646	662	658	687	653		6,848		6,301	6,668	5,222
Shahbazpur-4	0	101	630	537	406	602	622	681	685	674	465		5,403	26,544	2,374	5,764	6,936
Field Total:	1,074	711	1,420	1,567	1,514	1,832	1,880	2,014	2,000	2,038	1,752	0	17,801	76,987	14,058	19,501	18,943
Daily Avg.(mmscfd)	35	25	46	52	49	61	61	65	67	66	58	0	53		38	53	52
Field	Srikail																
Srikail-2	369	302	278	243	230	211	209	223	204	221	234		2,723	50,405	4,450	5,288	5,154
Srikail-3	255	220	154	151	145	102	116	146	152	122	151		1,713	43,892	3,360	3,988	4,273
Srikail-4	612	582	644	617	644	627	633	621	598	599	564		6,742	20,773	2,561	3,026	2,971
East 1					202	241	252	250	235	236	219						
Field Total:	1,236	1,104	1,076	1,010	1,220	1,181	1,210	1,240	1,189	1,177	1,167	0	11,178	115,070	10,371	12,301	12,398
Daily Avg.(mmscfd)	40	39	35	34	39	39	39	40	40	38	39	0	33		28	34	34
Field :	Sundalpur																
Sundalpur -1	0	0	0	0	0	0	0	0	0	0	0	0	0	9,809	0	0	0
Sundalpur -2	224	209	234	223	228	220	235	233	229	241	237		2,513	9,911	2,649	2,572	2,176
Field Total:	224	209	234	223	228	220	235	233	229	241	237	0	2,513	19,720	2,649	2,572	2,176
Daily Avg.(mmscfd)	7	7	8	7	7	7	8	8	8	8	8	0	8		7	7	6
Field :	Sylhet																
Sylhet-3	Production Suspended													89,032			
Sylhet-6	Production Suspended													91,748			
Sylhet-7	117	105	116	112	115	111	114	114	105	91	59		1,159	30,900	1,377	1,373	1,622

Monthly Production by Field and Well upto November 2021



HYDROCARBON UNIT
Energy & Mineral Resources Division

Figures in mmscf

Well	Jan	Feb	Mar	Apr	May	Jun	Jul	Aug	Sep	Oct	Nov	Dec	Total	Cumulative	2020	2019	2018
Surma-1									0	0	0		0	6,528	0	0	0
Sylhet-9									114	126	133						
Field Total:	117	105	116	112	115	111	114	114	219	217	192	0	1,159	218,208	1,377	1,373	1,622
Daily Avg.(mmscfd)	4	4	4	4	4	4	4	4	7	7	6	0	3		4	4	4
Field :	Titas																
Titas-1	515	466	507	498	503	479	485	529	499	532	515		5,528	457,431	5,626	6,648	8,516
Titas-2	861	766	845	830	815	768	716	790	755	760	703		8,609	464,208	9,217	10,877	11,522
Titas-3	0	0	0	0	0	0	0	0	0	0	0		0	314,888	0	0	0
Titas-4	877	776	855	829	800	766	694	760	767	813	805		8,742	399,562	9,356	11,013	11,726
Titas-5	894	801	866	854	828	812	676	809	807	864	837		9,049	458,546	9,526	11,720	11,838
Titas-6	834	751	833	763	799	728	731	881	853	895	848		8,917	391,060	9,401	9,613	12,030
Titas-7	0	0	0	0	0	475	587	702	686	702	672		3,824	360,717	1,784	10,244	11,919
Titas-8	487	525	566	560	569	534	505	584	543	576	554		6,003	289,604	5,115	5,851	6,154
Titas-9	627	551	565	547	582	510	421	525	508	517	519		5,872	294,331	5,770	6,200	6,706
Titas-10	619	542	637	664	608	582	573	636	639	651	663		6,814	221,081	7,397	7,869	7,612
Titas-11	773	707	696	755	650	701	403	589	415	379	732		6,799	271,974	9,440	8,834	9,998
Titas-12	442	408	440	415	362	397	238	368	283	230	382		3,967	115,409	5,428	5,239	5,160
Titas-13	0	0	0	0	0	0	0	0	0	0	0		0	194,541	0	4,449	6,952
Titas-14	276	207	238	228	254	220	230	192	167	180	2		2,195	163,216	4,966	6,070	7,203
Titas-15	314	278	293	272	281	267	266	288	269	243	219		2,990	151,788	4,306	4,978	5,543
Titas-16	556	518	572	557	575	546	494	569	560	574	544		6,065	165,992	6,373	7,209	8,605
Titas-17	423	376	358	380	343	401	364	371	350	363	355		4,084	54,350	4,969	5,794	6,335
Titas-18	450	394	383	410	372	433	416	467	447	468	432		4,673	53,957	5,166	6,113	6,664
Titas-19	405	379	429	427	435	422	395	441	466	472	450		4,720	43,115	4,754	5,592	6,115
Titas-20	354	307	268	292	361	355	302	353	357	372	358		3,678	29,912	3,817	3,589	3,914
Titas-21	250	213	228	227	251	267	265	251	254	272	266		2,743	17,904	2,892	3,036	2,995
Titas-22	193	143	26	0	0	0	0	0	0	0	0		362	30,349	2,436	3,133	4,158
Titas-27	478	421	436	451	321	395	440	502	493	499	497		4,934	44,608	5,233	5,602	5,827
Titas-23	527	480	527	504	518	521	546	553	525	550	526		5,775	26,187	5,328	5,079	5,594
Titas-24	0	0	0	0	0	0	0	0	0	0	0		0	9,019	1,238	2,789	2,709
Titas-25	466	423	452	449	466	448	449	465	449	465	438		4,970	29,032	5,424	6,424	6,324
Titas-26	778	713	785	769	791	761	782	776	742	763	738		8,398	45,251	8,961	8,628	9,672

Monthly Production by Field and Well upto November 2021



HYDROCARBON UNIT
Energy & Mineral Resources Division

Figures in mmscf

Well	Jan	Feb	Mar	Apr	May	Jun	Jul	Aug	Sep	Oct	Nov	Dec	Total	Cumulative	2020	2019	2018
Field Total:	12,400	11,146	11,806	11,680	11,484	11,789	10980	12,399	11,834	12,139	12,054	0	129,711	5,098,032	143,923	172,591	191,792
Daily Avg.(mmscfd)	400	398	381	389	370	393	354	400	394	392	402	0	388		393	473	525
Field : Begumganj																	
Begumganj-3	179	170	186	171	188	244	262	266	282	262	253		2,462	8,021	1,940	2,150	593
Field Total:	179	170	186	171	188	244	262	266	282	262	253	0	2,462	8,021	1,940	2,150	593
Daily Avg.(mmscfd)	6	6	6	6	6	8	8	9	9	8	8	0	7		5	6	2
Field : Rupganj																	
Rupganj-1	0	0	0										0	679	0	0	0
Field Total:	0	0	0	0	0	0	0	0	0	0	0	0	0	679	0	0	0
Daily Avg.(mmscfd)	0	0	0	0	0	0	0	0	0	0	0	0	0		0	0	0
Grand Total (in Bcf)	77.05	69.03	74.86	73.18	71.76	73.87	65.50	73.07	72.57	67.35	71.39	0.00	787.6	19,023.53	875.1	933.8	964.7
Daily Avg.(mmscfd)	2,486	2,465	2,415	2,439	2,315	2,462	2113	2,357	2,419	2,173	2,380	0	2,358		2,391	2,558	2,643

Monthly Condensate Production by Fields upto November 2021



Field Name	Jan	Feb	Mar	Apr	May	Jun	Jul	Aug	Sep	Oct	Nov	Dec	Total	Cumulative	2020	2019	2018	
														000' bbl				
Bakhrabad	1,633	1,454	1,290	1,190	1,138	1,152	1,122	1,078	1,067	1,106	1,218		13,448	1,060	18,004	8,201	5,022	
Daily Avg.	53	52	42	40	37	38	36	35	36	36	41	0	40		49	22	14	
Bangura	6,795	5,660	6,944	7,132	6,479	6,661	6,012	6,917	6,194	5,950	5,589		70,333	1,335	95,394	104,034	94,737	
Daily Avg.	219	202	224	238	209	222	194	223	206	192	186	0	211		261	285	260	
Beani Bazar	3,846	3,423	3,648	3,483	3,542	3,445	3,578	3,487	3,391	3,443	3,284		38,570	1,702	46,061	50,497	51,187	
Daily Avg.	124	122	118	116	114	115	115	27	113	111	109	0	115		126	138	140	
Bibiyana	204,519	179,529	206,226	188,534	172,634	176,078	142,517	162,297	154,163	161,637	151,036		1,899,170	28,928	2,780,633	3,094,275	3,267,318	
Daily Avg.	6,597	6,412	6,652	6,284	5,569	5,869	4,597	5,235	5,139	5,214	5,035	0	5,686		7,597	8,477	8,952	
Chattak	0	0	0	0	0	0	0	0	0	0	0	0	0	4	0	0	0	
Daily Avg.	0	0	0	0	0	0	0	0	0	0	0	0	0		0	0	0	
Fenchuganj	61	40	53	58	355	334	274	244	248	244	249		2,159	119	527	738	1,625	
Daily Avg.	2	1	2	2	11	11	9	8	8	8	8	0	6		1	2	4	
Feni	0	0	0	0	0	0	0	0	0	0	0	0	0	110	0	0	0	
Daily Avg.	0	0	0	0	0	0	0	0	0	0	0	0	0		0	0	0	
Habiganj	398	312	321	304	294	271	252	253	237	215	291		3,148	146	5,510	7,233	5,612	
Daily Avg.	13	11	10	10	9	9	8	8	8	7	10	0	9		15	20	15	
Jalalabad	32,269	28,160	29,898	29,650	29,114	28,256	19,908	27,152	26,850	31,916	31,030		314,203	11,139	367,161	318,424	367,160	
Daily Avg.	1,041	1,006	964	988	939	942	642	876	895	1,030	1,034	0	941		1,003	872	1,006	
Kailas Tila	0	14,528	13,848	12,390	11,541	10,673	11,263	10,166	10,285	10,535	10,376		115,605	8,258	177,210	170,713	189,620	
Daily Avg.	0	519	447	413	372	356	363	328	343	340	346	0	346		484	468	520	
Kamta	Production Suspended										0	0		4				
Daily Avg.	0										0	0		0		0	0	0
Meghna	452	392	452	456	498	534	500	468	425	426	415		5,018	126	6,652	7,098	7,947	
Daily Avg.	15	14	15	15	16	18	16	15	14	14	14	0	15		18	19	22	
Moulavi Bazar	74	85	61	79	68	79	50	76	76	65	62		775	120	1,262	745	856	
Daily Avg.	2	3	2	3	2	3	2	2	3	2	2	0	2		3	2	2	

Monthly Condensate Production by Fields upto November 2021



Field Name	Jan	Feb	Mar	Apr	May	Jun	Jul	Aug	Sep	Oct	Nov	Dec	Total	Cumulative	2020	2019	2018	
														000' bbl				
Narshingdi	1,180	980	1,121	1,067	1,081	1,077	1,245	1,287	1,224	1,245	1,351		12,858	459	13,907	14,029	15,797	
Daily Avg.	38	35	36	36	35	36	40	42	41	40	45	0	38		38	38	43	
Rashidpur	1,195	1,117	1,217	1,111	1,213	1,193	1,190	1,228	1,192	1,217	1,184		13,057	820	15,049	16,268	14,393	
Daily Avg.	39	40	39	37	39	40	38	40	40	39	39	0	39		41	45	39	
Saldanadi	16	12	11	4	0	10	9	10	10	11	12		106	59	240	302	137	
Daily Avg.	1	0	0	0	0	0	0	0	0	0	0	0	0		1	1	0	
Sangu	0	0	0	0	0	0	0	0	0	0	0	0	0	37	0	0	0	
Daily Avg.	0	0	0	0	0	0	0	0	0	0	0	0	0		0	0	0	
Semutang	0	0	0	0	0	0	0	0	0	0	0	0	0	5	0	4	26	
Daily Avg.	0	0	0	0	0	0	0	0	0	0	0	0	0		0	0	0	
Shahbazpur	190	126	219	200	196	242	258	265	259	249	221		2,425	13	1,839	2,034	2,488	
Daily Avg.	6	4	7	7	6	8	8	9	9	8	7	0	7		5	6	7	
Srikail	5,607	5,142	4,711	4,423	5,355	5,319	5,165	5,130	5,031	5,087	5,118		56,088	240	21,213	34,193	33,765	
Daily Avg.	181	184	152	147	173	177	167	165	168	164	171	0	168		58	94	93	
Sundalpur	8	9	10	8	9	9	13	12	16	4	12		109	1	89	172	121	
Daily Avg.	0	0	0	0	0	0	0	0	1	0	0	0	0		0	0	0	
Sylhet	656	644	710	641	676	599	549	616	1,298	1,286	1,258		8,933	823	8,982	9,691	10,277	
Daily Avg.	21	23	23	21	22	20	18	20	43	41	42	0	27		25	27	28	
Titas	10,145	8,740	8,535	8,208	8,191	8,607	8,450	9,711	9,174	8,963	9,299		98,023	5,581	117,408	141,979	159,803	
Daily Avg.	327	312	275	274	264	287	273	313	306	289	310	0	293		321	389	438	
Begumganj	50	51	57	57	65	74	94	91	85	69	68		761	2	380	711	201	
Daily Avg.	2	2	0	0	0	2	3	3	0	2	2	0	2		1	2	1	
Rupganj	0	0	0	0	0	0	0	0	0	0	0	0	0	1	0	0	0	
Daily Avg.	0	0	0	0	0	0	0	0	0	0	0	0	0		0	0	0	
Total (000'bbl)	269	250	279	259	242	245	202	230	221	234	222	0	2,655	61,091	3,678	3,981	4,228	
Daily Avg. (000'bbl)	8.7	8.9	9.0	8.6	7.8	8	6.5	7.4	7.4	7.5	7	0	8		10.0	10.9	11.6	

Note: Historical condensate figure of Sangu available from 2006. Sylhet available from August 1964

Monthly Water Production by Fields in November 2021



HYDROCARBON UNIT
Energy & Mineral Resources Division

Field Name	Jan	Feb	Mar	Apr	May	Jun	Jul	Aug	Sep	Oct	Nov	Dec	Total	2020	2,019	2,018
Bakhrabad	2,004	1,858	1,962	1,963	1,984	1,920	1,943	1,945	1,894	1,945	1,998		21,416	23,912	25,025	28,218
Daily Avg.	65	66	63	65	64	64	63	63	63	63	67	0	64	65	69	77
Bangura	7,749	7,839	9,410	10,605	11,230	13,702	15,992	22,183	27,381	40,738	55,693		222,522	42,021	38,297	43,917
Daily Avg.	250	280	304	354	362	457	516	716	913	1,314	1,856	0	666	115	105	120
Beani Bazar	16,789	15,152	16,866	16,447	16,749	16,198	16,941	17,161	17,310	17,859	17,300		184,772	176,527	130,468	109,854
Daily Avg.	542	541	544	548	540	540	546	554	577	576	577	0	553	482	357	301
Bibiyana	20,534	15,983	17,562	18,180	17,557	19,029	16,421	17,142	17,161	17,439	17,129		194,137	209,941	194,287	194,651
Daily Avg.	662	571	567	606	566	634	530	553	572	563	571	0	581	574	532	533
Chattak	0	0	0	0	0	0	0	0	0	0	0	0				
Daily Avg.	0	0	0	0	0	0	0	0	0	0	0	0	0	0	0	0
Fenchuganj	3,147	3,296	3,457	3,827	3,273	3,501	1,728	33	29	21	23		22,335	28,653	34,864	74,969
Daily Avg.	102	118	112	128	106	117	56	1	1	1	1	0	67	78	96	205
Feni	0	0	0	0	0	0	0	0	0	0	0	0	0	0	0	0
Daily Avg.	0	0	0	0	0	0	0	0	0	0	0	0	0	0	0	0
Habiganj	1,658	1,973	2,543	2,196	2,225	2,674	2,794	3,035	3,804	5,774	5,679		34,355	15,442	12,931	39,104
Daily Avg.	53	70	82	73	72	89	90	98	127	186	189	0	103	42	35	107
Jalalabad	5,501	4,885	5,179	4,973	5,022	4,889	3,528	5,295	5,635	6,096	6,106		57,109	72,877	57,962	55,950
Daily Avg.	177	174	167	166	162	163	114	171	188	197	204	0	171	199	159	153
Kailas Tila	0	15,554	20,803	22,327	18,165	19,123	20,559	3,388	6,560	6,323	6,146		138,948	100,033	68,693	43,233
Daily Avg.	0	556	671	744	586	637	663	109	219	204	205	0	416	273	188	118
Kamta	0	0	0	0	0	0	0	0	0	0	0	0				
Daily Avg.	0	0	0	0	0	0	0	0	0	0	0	0	0	0	0	0
Meghna	1,591	1,455	1,708	1,795	1,973	1,952	2,072	2,074	1,916	1,971	1,916		20,423	16,447	8,048	2,014
Daily Avg.	51	52	55	60	64	65	67	67	64	64	64	0	61	45	22	6
Moulavi Baza	237	214	279	229	182	204	144	225	199	243	212		2,368	6,968	5,447	13,965
Daily Avg.	8	8	9	8	6	7	5	7	7	8	7	0	7	19	15	38
Narshingdi	864	730	868	790	849	827	867	891	851	887	864		9,288	10,191	10,069	10,374
Daily Avg.	28	26	28	26	27	28	28	29	28	29	29	0	28	28	28	28
Rashidpur	21,105	19,642	20,439	19,973	19,930	19,076	19,702	19,674	19,046	19,810	19,113		217,510	144,432	158,452	137,406
Daily Avg.	681	702	659	666	643	636	636	635	635	639	637	0	651	395	434	376
Saldanadi	192	103	109	26	1	104	90	106	107	112	109		1,059	1,977	1,570	813
Daily Avg.	6	4	4	1	0	3	3	3	4	4	4	0	3	5	4	2

Monthly Water Production by Fields in November 2021



HYDROCARBON UNIT
Energy & Mineral Resources Division

Field Name	Jan	Feb	Mar	Apr	May	Jun	Jul	Aug	Sep	Oct	Nov	Dec	Total	2020	2,019	2,018
Sangu	0	0	0	0	0	0	0	0	0	0	0	0	0	0	0	0
Daily Avg.	0	0	0	0	0	0	0	0	0	0	0	0	0	0	0	0
Semutang	55	84	93	96	98	102	103	105	110	106	109		1,061	911	966	3,002
Daily Avg.	2	3	3	3	3	3	3	3	4	3	4	0	3	2	3	8
Shahbazpur	1,328	878	1,753	1,927	1,872	2,264	2,322	2,481	2,464	2,413	2,222		21,924	17,316	23,785	22,110
Daily Avg.	43	31	57	64	60	75	75	80	82	78	74	0	66	47	65	61
Srikail	1,565	1,402	1,181	1,159	1,292	1,181	1,234	1,379	1,297	1,256	1,241		14,187	10,292	19,783	18,432
Daily Avg.	50	50	38	39	42	39	40	44	43	41	41	0	42	28	54	50
Sundalpur	35	34	41	36	34	35	43	43	43	46	44		434	233	354	219
Daily Avg.	1	1	1	1	1	1	1	1	1	1	1	0	1	1	1	1
Sylhet	10,331	9,351	10,379	10,044	10,442	10,133	10,691	12,354	13,009	13,978	13,912		124,624	114,597	39,488	20,362
Daily Avg.	333	334	335	335	337	338	345	399	434	451	464	0	373	313	108	56
Titas	22,807	19,695	14,298	12,676	16,258	18,544	19,290	19,060	18,585	21,911	15,340		198,464	287,912	517,843	556,608
Daily Avg.	736	703	461	423	524	618	622	615	620	707	511	0	594	787	1,419	1,525
Begumganj	65	63	66	51	73	86	90	92	101	93	86		866	418	738	207
Daily Avg.	2	2	2	2	2	3	3	3	3	3	3	0	3	1	2	1
Rupganj	0	0	0	0	0	0	0	0	0	0	0	0	0	0	0	0
Daily Avg.	0	0	0	0	0	0	0	0	0	0	0	0	0	0	0	0
Total (000'bl	117,558	120,191	128,996	129,320	129,209	135,544	136,554	128,666	137,502	159,021	165,242	0	1,487,803	1,281,101	1,349,070	1,375,408
Daily Avg. (000'bbl)	3,792	4,293	4,161	4,311	4,168	4,518	4,405	4,151	4,583	5,130	5,508	0	4,455	3,500	3,696	3,768

Conditions of Field and Well upto November 2021



Well	company	well type	Discovery	production start	Drilled depth (ft)	Pressure	Pressure type	Completion Zone
Field : Bakharabad								
BKB-1	BGFCL	Vertical	1969	June,1969	9309		FWHP	J
BKB-2	BGFCL	Directional	1969	October,1981	7496	248-274	FWHP	G
BKB-3	BGFCL	Directional	1969	April,1982	9339	356-412	FWHP	G
BKB-4	BGFCL	Directional	1969	June,1982	9430			D
BKB-5	BGFCL	Directional	1969	Sept,1982	9675	1555-1646	FWHP	B
BKB-6	BGFCL	Directional	1969	March,1989	8785			J
BKB-7	BGFCL	Directional	1969	July,1989	8605		FWHP	J
BKB-8	BGFCL	Directional	1969	Sept,1989	8840	490-523	FWHP	J
BKB-9	BGFCL	Vertical	1969	August,2013	8318	1005-1097	FWHP	G
BKB-10	BGFCL	Directional	1969	June,2016	9291	1010-1102	FWHP	K
Field : Bangura								
Bangura-1	Tullow		2004			887-940	FWHP	D
Bangura-2	Tullow		2004			587-685	FWHP	D/E
Bangura-3	Tullow		2004			719-789	FWHP	D
Bangura-6	Tullow		2004			708-780	FWHP	D
Bangura-5	Tullow		2004			579-621	FWHP	D
Field : Beani Bazar								
BB-1	SGFL		1981	July,1999	13480	580-620	SIWHP	Upper
BB-2	SGFL		1981	July,1999	12048	3210-3220	FWHP	Upper
Field : Bibiyana								
BY-1	Chevron		1998			1547-2007	FWHP	BB60, BB66
BY-2	Chevron		1998			1313-1390	FWHP	BB60, BH20A, BH20E
BY-3	Chevron		1998			1363-1403	FWHP	BB70
BY-4	Chevron		1998			1330-1390	FWHP	BH10
BY-5	Chevron		1998			1254-1299	FWHP	BH20A, BH20B, BH20C, BH20D
BY-6	Chevron		1998			1250-1486	FWHP	BB70
BY-7	Chevron		1998			1454-1566	FWHP	BH10
BY-8	Chevron		1998			1270-1297	FWHP	BH20A, BH20B
BY-9	Chevron		1998			1243-1273	FWHP	BH10
BY-10	Chevron		1998			1465-1533	FWHP	BB60
BY-11	Chevron		1998			1260-1284	FWHP	BH20A, BH20B
BY-12	Chevron		1998			1259-1332	FWHP	BB70
BY-13	Chevron		1998			1300-1356	FWHP	BH20A, BH20B
BY-14	Chevron		1998			1342-1632	FWHP	BH20A, BH20B
BY-15	Chevron		1998			2189-2240	FWHP	BB60
BY-16	Chevron		1998			1381-1644	FWHP	BH10, BH20D

Conditions of Field and Well upto November 2021



Well	company	well type	Discovery	production start	Drilled depth (ft)	Pressure	Pressure type	Completion Zone
BY-17	<i>Chevron</i>		<i>1998</i>			<i>2104-2229</i>	<i>FWHP</i>	<i>BB60</i>
BY-18	<i>Chevron</i>		<i>1998</i>			<i>1904-2218</i>	<i>FWHP</i>	<i>BB60</i>
BY-19	<i>Chevron</i>		<i>1998</i>			<i>1354-1477</i>	<i>FWHP</i>	<i>BH10, BH20A</i>
BY-20	<i>Chevron</i>		<i>1998</i>			<i>1248-1262</i>	<i>FWHP</i>	<i>BH20D, BH20A, BH10</i>
BY-21	<i>Chevron</i>		<i>1998</i>			<i>1333-1348</i>	<i>FWHP</i>	<i>BH20A, BH20B, BH10</i>
BY-22	<i>Chevron</i>		<i>1998</i>			<i>1552-1586</i>	<i>FWHP</i>	<i>BB60</i>
BY-23	<i>Chevron</i>		<i>1998</i>			<i>1739-2021</i>	<i>FWHP</i>	<i>BH10, BH20A, BH20B, BH20C</i>
BY-24	<i>Chevron</i>		<i>1998</i>			<i>1337-2091</i>	<i>FWHP</i>	<i>BB60</i>
BY-25	<i>Chevron</i>		<i>1998</i>			<i>1728-1857</i>	<i>FWHP</i>	<i>BB60, BB66</i>
BY-26	<i>Chevron</i>		<i>1998</i>			<i>1877-2094</i>	<i>FWHP</i>	<i>BB60, BB64</i>
Field : Chattak								
Ch-1	SGFL		1959					
Field : Fenchuganj								
Fenchuganj-2	<i>BAPEX</i>		<i>1988</i>	<i>May, 2004</i>				
Fenchuganj-3	<i>BAPEX</i>		<i>1988</i>	<i>February, 2005</i>		<i>2004-2010</i>		<i>upper</i>
Fenchuganj-4	<i>BAPEX</i>		<i>1988</i>			<i>2037-2065</i>		
Field : Feni								
Feni-1	<i>BAPEX</i>		<i>1981</i>					
Feni-2	<i>BAPEX</i>		<i>1981</i>					
Feni-3	<i>BAPEX</i>		<i>1981</i>					
Feni-4	<i>BAPEX</i>		<i>1981</i>					
Feni-5	<i>BAPEX</i>		<i>1981</i>					
Field : Habiganj								
Hbj-1	<i>BGFCL</i>	<i>Vertical</i>	<i>1963</i>	<i>Feb,1969</i>	<i>11500</i>		<i>FWHP</i>	<i>upper</i>
Hbj-2	<i>BGFCL</i>	<i>Vertical</i>	<i>1963</i>	<i>Feb,1969</i>	<i>5100</i>		<i>FWHP</i>	<i>upper</i>
Hbj-3	<i>BGFCL</i>	<i>Vertical</i>	<i>1963</i>	<i>July,1985</i>	<i>5282</i>	<i>1478-1486</i>	<i>FWHP</i>	<i>upper</i>
Hbj-4	<i>BGFCL</i>	<i>Vertical</i>	<i>1963</i>	<i>May,1985</i>	<i>5249</i>	<i>1460-1467</i>	<i>FWHP</i>	<i>upper</i>
Hbj-5	<i>BGFCL</i>	<i>Directional</i>	<i>1963</i>	<i>Feb,1992</i>	<i>11552</i>	<i>1440-1446</i>	<i>FWHP</i>	<i>upper</i>
Hbj-6	<i>BGFCL</i>	<i>Vertical</i>	<i>1963</i>	<i>Feb,1992</i>	<i>5515</i>	<i>1375-1379</i>	<i>FWHP</i>	<i>upper</i>
Hbj-7	<i>BGFCL</i>	<i>Vertical</i>	<i>1963</i>	<i>April,2000</i>	<i>10236</i>	<i>1331-1139</i>	<i>FWHP</i>	<i>upper</i>
Hbj-8	<i>BGFCL</i>	<i>Vertical</i>	<i>1963</i>	<i>May, 2000</i>	<i>5280</i>			<i>upper</i>
Hbj-9	<i>BGFCL</i>	<i>Vertical</i>	<i>1963</i>	<i>July,1998</i>	<i>5249</i>			<i>upper</i>
Hbj-10	<i>BGFCL</i>	<i>Vertical</i>	<i>1963</i>	<i>Apr, 2000</i>	<i>5133</i>	<i>1322-1331</i>	<i>FWHP</i>	<i>upper</i>
Hbj-11	<i>BGFCL</i>	<i>Vertical</i>	<i>1963</i>	<i>February,2008</i>	<i>10499</i>	<i>1417-1423</i>	<i>FWHP</i>	<i>upper</i>
Field : Jalalabad								
JB-1	<i>Chevron</i>		<i>1989</i>			<i>1333-1436</i>	<i>FWHP</i>	<i>BB60, BB50</i>

Conditions of Field and Well upto November 2021



Well	company	well type	Discovery	production start	Drilled depth (ft)	Pressure	Pressure type	Completion Zone
JB-2	<i>Chevron</i>		<i>1989</i>			<i>1279-1294</i>	<i>FWHP</i>	<i>BB50, BB60</i>
JB-3	<i>Chevron</i>		<i>1989</i>			<i>1332-1375</i>	<i>FWHP</i>	<i>BB50, BB60</i>
JB-4	<i>Chevron</i>		<i>1989</i>			<i>1365-1425</i>	<i>FWHP</i>	<i>BB60</i>
JB-6	<i>Chevron</i>		<i>1989</i>			<i>1354-1362</i>	<i>FWHP</i>	<i>BB60, BB50</i>
JB-7	<i>Chevron</i>		<i>1989</i>			<i>1666-1679</i>	<i>FWHP</i>	<i>BB20</i>
JB-8	<i>Chevron</i>		<i>1989</i>			<i>1362-1370</i>	<i>FWHP</i>	<i>BB50, BB60</i>
Field : Kailas Tila								
KTL-1	<i>SGFL</i>		<i>1962</i>	<i>June, 1983</i>	<i>12417</i>	<i>0</i>	<i>SIWHP</i>	
KTL-2	<i>SGFL</i>		<i>1962</i>	<i>Feb, 1995</i>		<i>2225-2230</i>	<i>FWHP</i>	
KTL-3	<i>SGFL</i>		<i>1962</i>	<i>March, 1995</i>		<i>2470-2495</i>	<i>FWHP</i>	
KTL-4	<i>SGFL</i>		<i>1962</i>	<i>March, 1997</i>		<i>2360-2410</i>	<i>FWHP</i>	
KTL-5	<i>SGFL</i>		<i>1962</i>	<i>Sep, 2006</i>		<i>0</i>	<i>SIWHP</i>	
KTL-6	<i>SGFL</i>		<i>1962</i>	<i>Aug, 2007</i>		<i>2490-2495</i>	<i>FWHP</i>	
KTL-7	<i>SGFL</i>		<i>1962</i>			<i>0</i>	<i>SIWHP</i>	
Field : Kamta								
Kamta-1	<i>BGFCL</i>	<i>Vertical</i>	<i>1981</i>	<i>july,1982</i>	<i>11857</i>			<i>N/A</i>
Field : Meghna								
M-1	<i>BGFCL</i>	<i>Vertical</i>	<i>2004</i>	<i>july,1990</i>	<i>10069</i>	<i>1400-1450</i>	<i>FWHP</i>	<i>A,E,F & G</i>
Field : Moulavi Bazar								
MV Bazar-2	<i>Chevron</i>		<i>1997</i>			<i>800-820</i>	<i>FWHP</i>	<i>BB70</i>
MV Bazar-3	<i>Chevron</i>		<i>1997</i>			<i>800-820</i>	<i>FWHP</i>	<i>BB70</i>
MV Bazar-4	<i>Chevron</i>		<i>1997</i>			<i>946-952</i>	<i>FWHP</i>	<i>BB20</i>
MV Bazar-5	<i>Chevron</i>		<i>1997</i>			<i>0</i>	<i>SIWHP</i>	<i>BB60</i>
MV Bazar-6	<i>Chevron</i>		<i>1997</i>			<i>822-890</i>	<i>FWHP</i>	<i>BB20</i>
MV Bazar-7	<i>Chevron</i>		<i>1997</i>			<i>844-901</i>	<i>FWHP/SIWHP</i>	<i>BB20</i>
MV Bazar-9	<i>Chevron</i>		<i>1997</i>			<i>0</i>	<i>SIWHP</i>	<i>BB46, BB48, BB60</i>
Field : Narshingdi								
N-1	<i>BGFCL</i>	<i>vertical</i>	<i>1990</i>	<i>october,1990</i>	<i>11320</i>	<i>1143-1197</i>	<i>FWHP</i>	<i>BL</i>
N-2	<i>BGFCL</i>	<i>vertical</i>	<i>1990</i>	<i>february,2007</i>	<i>10778</i>	<i>1015-1097</i>	<i>FWHP</i>	<i>BL</i>
Field : Rashidpur								
RP-1	<i>SGFL</i>		<i>1960</i>			<i>1290-1291</i>	<i>FWHP</i>	<i>Upper</i>
RP-2	<i>SGFL</i>		<i>1960</i>			<i>73</i>	<i>SIWHP</i>	<i>Lower</i>
RP-3	<i>SGFL</i>		<i>1960</i>			<i>1548-1568</i>	<i>FWHP</i>	<i>Lower</i>
RP-4	<i>SGFL</i>		<i>1960</i>			<i>1450-1655</i>	<i>FWHP</i>	<i>Lower</i>
RP-5	<i>SGFL</i>		<i>1960</i>			<i>2291</i>	<i>SIWHP</i>	<i>Lower</i>
RP-6	<i>SGFL</i>		<i>1960</i>			<i>870</i>	<i>SIWHP</i>	<i>A</i>

Conditions of Field and Well upto November 2021



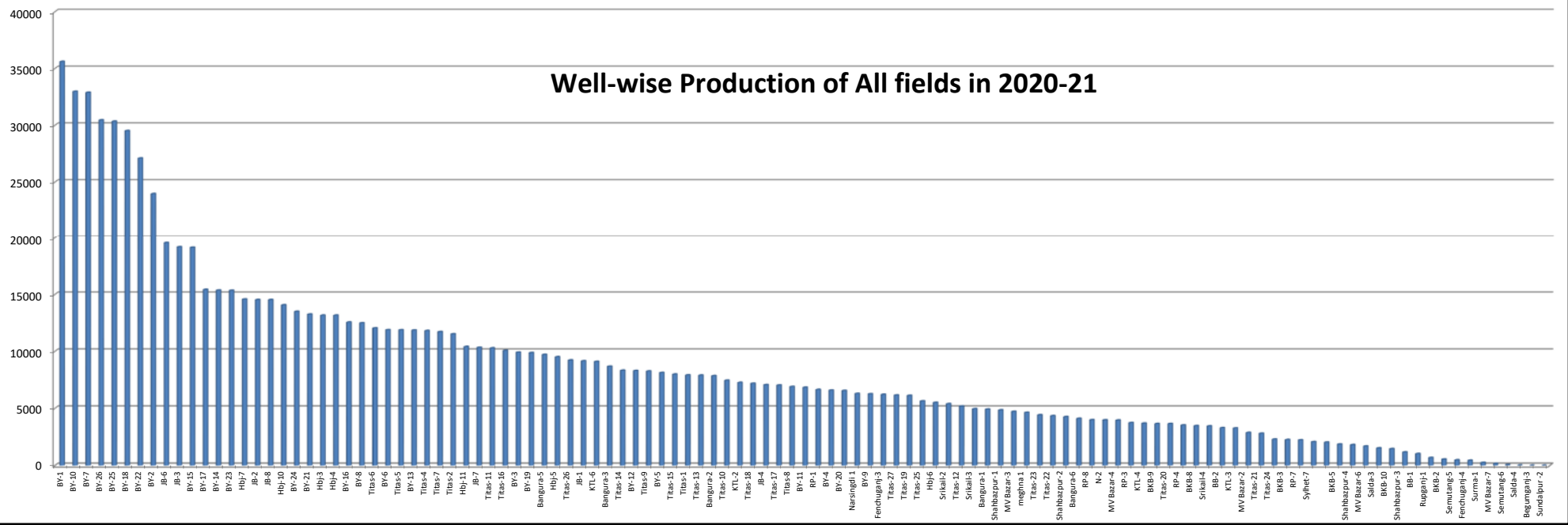
Well	company	well type	Discovery	production start	Drilled depth (ft)	Pressure	Pressure type	Completion Zone
RP-7	SGFL		1960			1308-1338	FWHP	Lower
RP-8	SGFL		1960			1600-1625	FWHP	Upper
Field : Salda Nadi								
Salda-1	BAPEX		1995					
Salda-2	BAPEX		1995					
Salda-3	BAPEX	Directional	1995	February, 2012		639-640, 698-700		Upper/Lower
Salda-4	BAPEX		1995					
Field : Sangu								
Sangu-1	BGFCL		1996					
Sangu-3z	BGFCL		1996					
Sangu-4	BGFCL		1996					
Sangu-5	BGFCL		1996					
Sangu-7	BGFCL		1996					
Sangu-8	BGFCL		1996					
Sangu-9	BGFCL		1996					
Sangu-10	BGFCL		1996					
Sangu-11	BGFCL		1996					
Field : Semutang								
Semutang-5	BAPEX		1967			280-508		Lower Zone
Semutang-6	BAPEX		1967			750-1302		
Field : Shahbazpur								
Shahbazpur-1	BAPEX		1995	May, 2009		2310-3543		Lower Zone
Shahbazpur-2	BAPEX		1995			3541-4133		Lower Zone
Shahbazpur-3	BAPEX		1995			4300		Upper Zone
Shahbazpur-4	BAPEX		1995			4250		Upper Zone
Field : Srikail								
Srikail-2	BAPEX		2012			990-1016		Upper & Lower D
Srikail-3	BAPEX		2012			981-1043		Upper & Lower D
Srikail-4	BAPEX		2012			1018-1068		Upper & Lower D
Field : Sundalpur								
Sundalpur -1	BAPEX		2011					
Sundalpur -2	BAPEX		2011					
Field : Sylhet								
Sylhet-3	SGFL		1955	Aug, 1958				
Sylhet-6	SGFL		1955	Aug, 1964		800-850	SIWHP	
Sylhet-7	SGFL		1955	Apr, 2005		1750-1820	FWHP	Lower Bokabil

Conditions of Field and Well upto November 2021

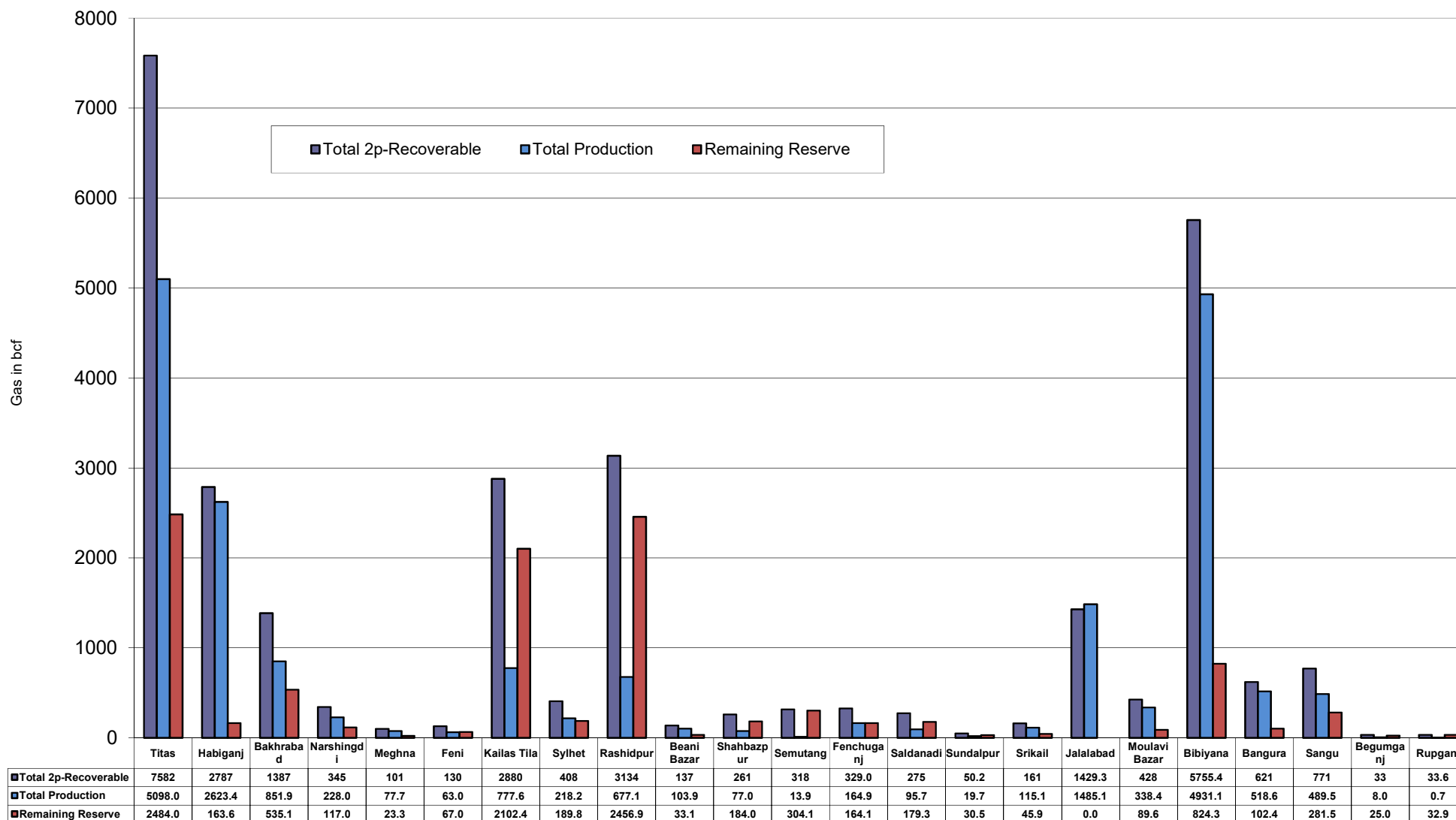


Well	company	well type	Discovery	production start	Drilled depth (ft)	Pressure	Pressure type	Completion Zone
Surma-1	SGFL		1955	June, 2010		230	SIWHP	C & D
Field : Titas								
Titas-1	BGFCL	vertical	1962	Mar,1969	12325	900-925	FWHP	A
Titas-2	BGFCL	vertical	1962	Fen,1969	10574	960-1020	FWHP	A
Titas-3	BGFCL	vertical	1962	sept,1969	9315	0	FWHP	A
Titas-4	BGFCL	vertical	1962	oct,1969	9350	1020-1070	FWHP	A
Titas-5	BGFCL	Directional	1962	jan,1981	10805	990-1035	FWHP	A
Titas-6	BGFCL	vertical	1962	Feb,1984	10072	1195-1225	FWHP	A
Titas-7	BGFCL	Directional	1962	July,1985	11006	1090-1160	FWHP	A
Titas-8	BGFCL	Directional	1962	sept,1985	11760	1000-1030	FWHP	B & C
Titas-9	BGFCL	Directional	1962	jan,1988	11893	1040-1085	FWHP	B & C
Titas-10	BGFCL	Directional	1962	may,1988	12139	1140-1180	FWHP	A
Titas-11	BGFCL	vertical	1962	Jun,1991	10462	1275-1310	FWHP	A
Titas-12	BGFCL	Directional	1962	July,2002	9873	1465-1500	FWHP	A
Titas-13	BGFCL	Directional	1962	June,2000	11487	1085-1115	FWHP	A
Titas-14	BGFCL	Directional	1962	June,2000	11004	1200-1250	FWHP	A
Titas-15	BGFCL	vertical	1962	may,2006	10446	0	FWHP	A
Titas-16	BGFCL	Directional	1962	dec,2005	11673	1205-1225	FWHP	A
Titas-17	BGFCL	vertical	1962	feb,2013	9424	1145-1175	FWHP	A
Titas-18	BGFCL	Directional	1962	august,2013	10932	1165-1190	FWHP	A
Titas-19	BGFCL	Directional	1962	may,2014	12730	1365-1415	FWHP	A
Titas-20	BGFCL	Directional	1962	oct,2013	11585	1370-1440	FWHP	A
Titas-21	BGFCL	Directional	1962	dec,2013	11631	1260-1285	FWHP	A
Titas-22	BGFCL	Directional	1962	march,2014	11926	990-1025	FWHP	A
Titas-27	BGFCL	Directional	1962	april,2014	10292	1245-1265	FWHP	A
Titas-23	BGFCL	Directional	1962	feb,2017	11988	2265-2340	FWHP	C
Titas-24	BGFCL	Directional	1962	oct,2016	12686	1120-1245	FWHP	C
Titas-25	BGFCL	vertical	1962	march,2016	11680	1300-1340	FWHP	A
Titas-26	BGFCL	Directional	1962	july,2016	12618	1840-1875	FWHP	C
Field : Begumganj								
Begumganj-3	BAPEX		1977					
Field : Rupganj								
Rupganj-1	BAPEX		2014			38-88		

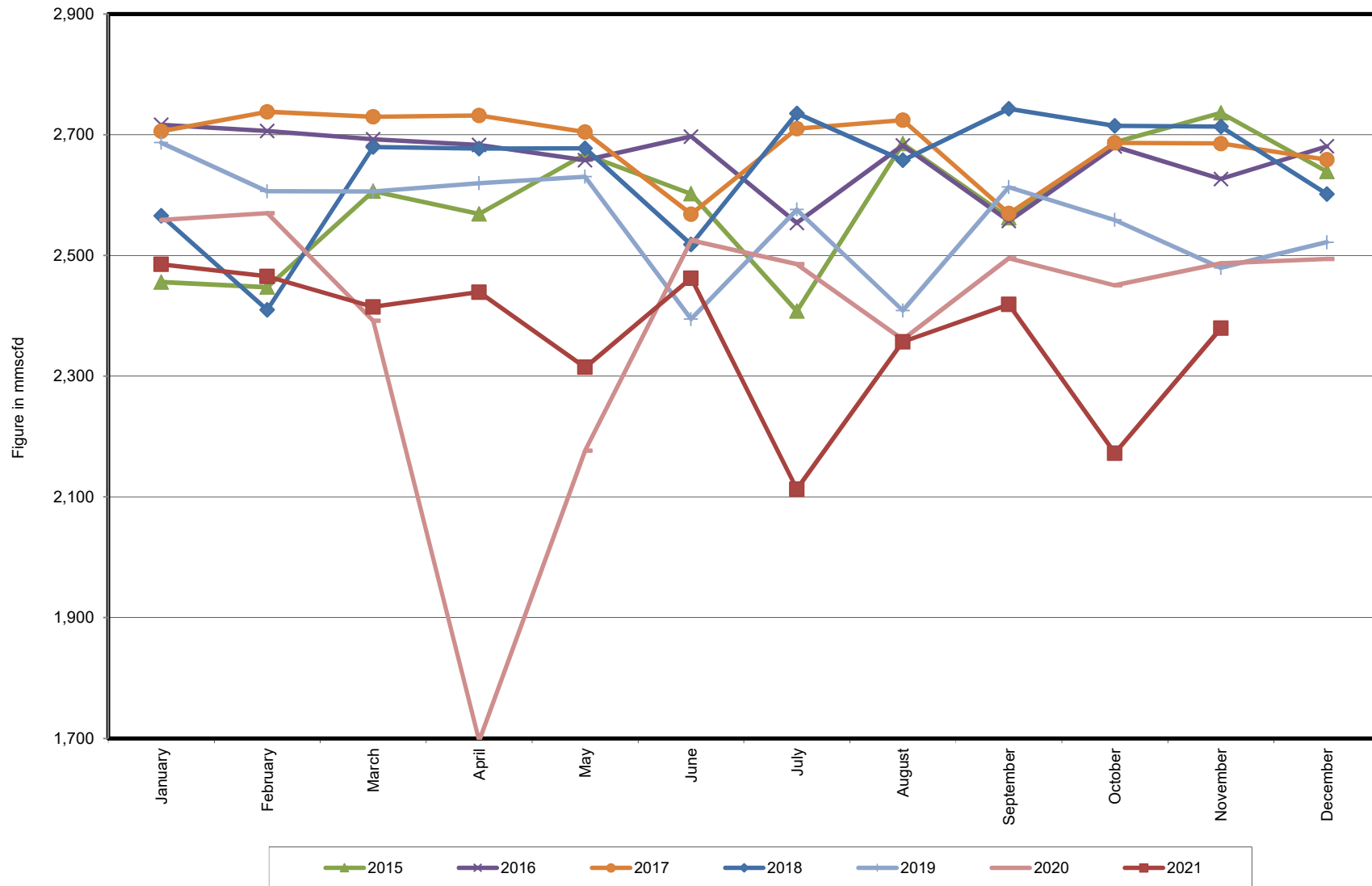
Well-wise Production of All fields in 2020-21



Reserve, Production and Remaining Reserve as of November 2021



Daily Avg. Production From January 2015 to November 2021



Field Wise Daily Avg. Production November 2021

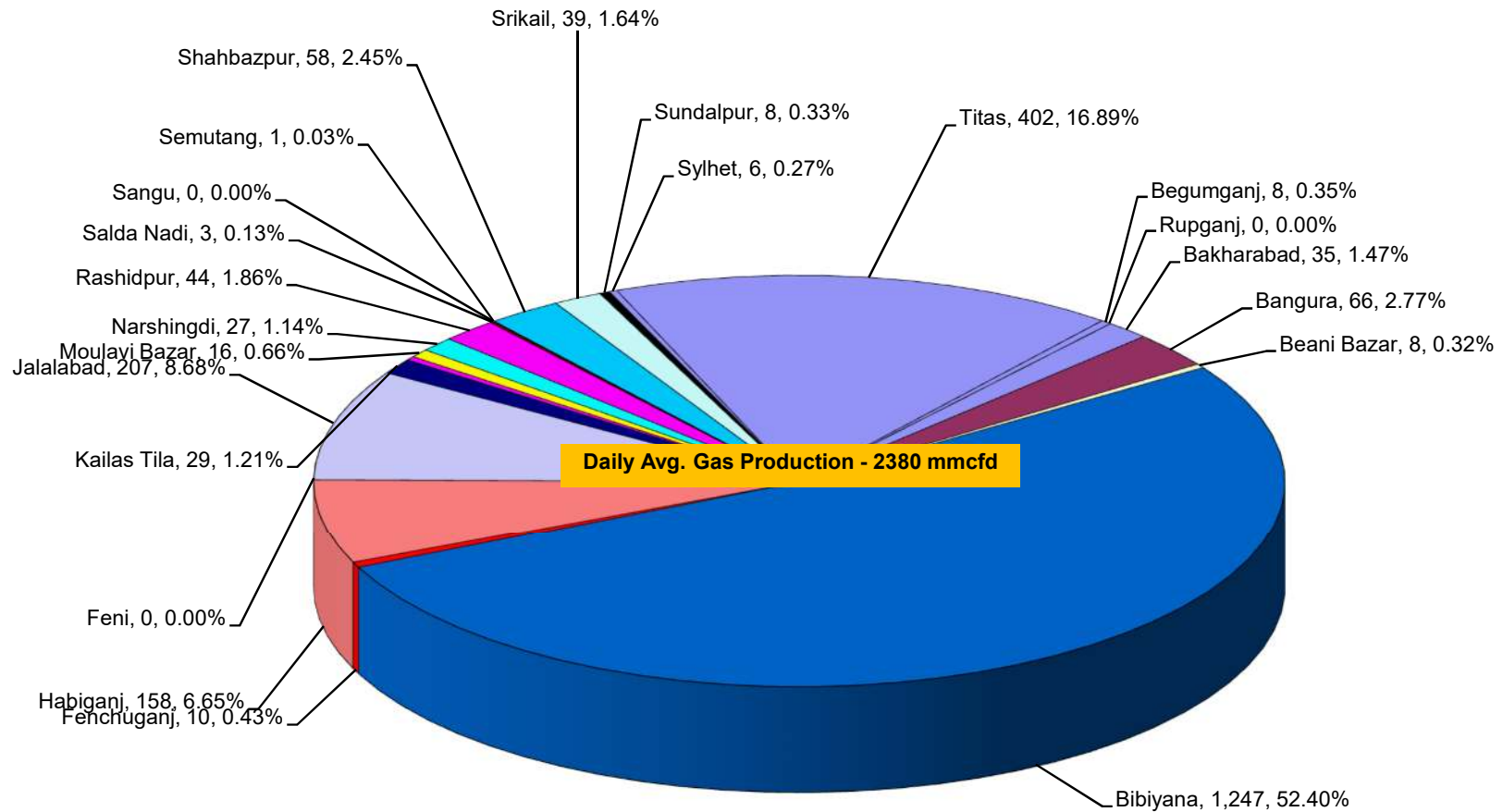
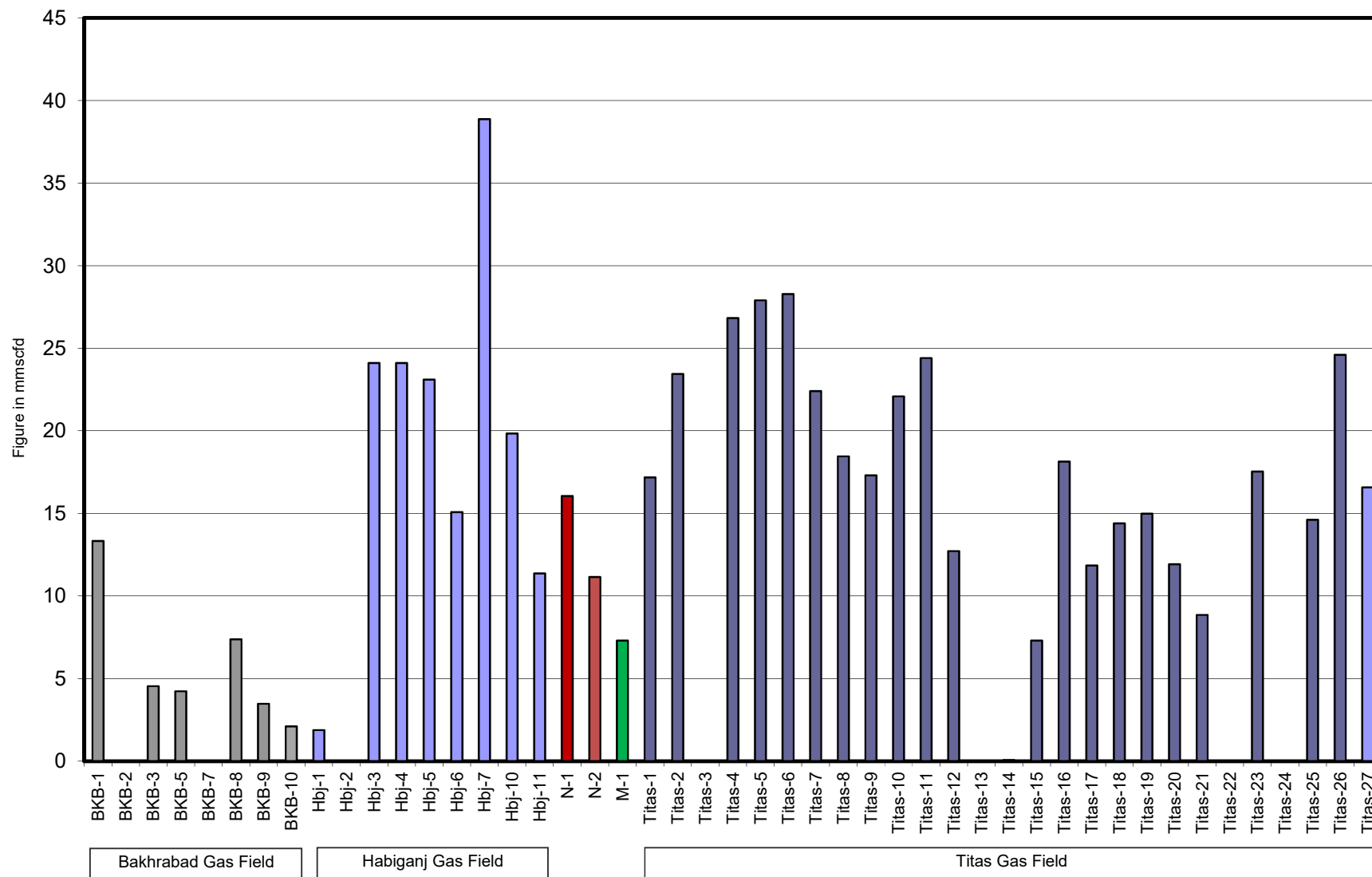


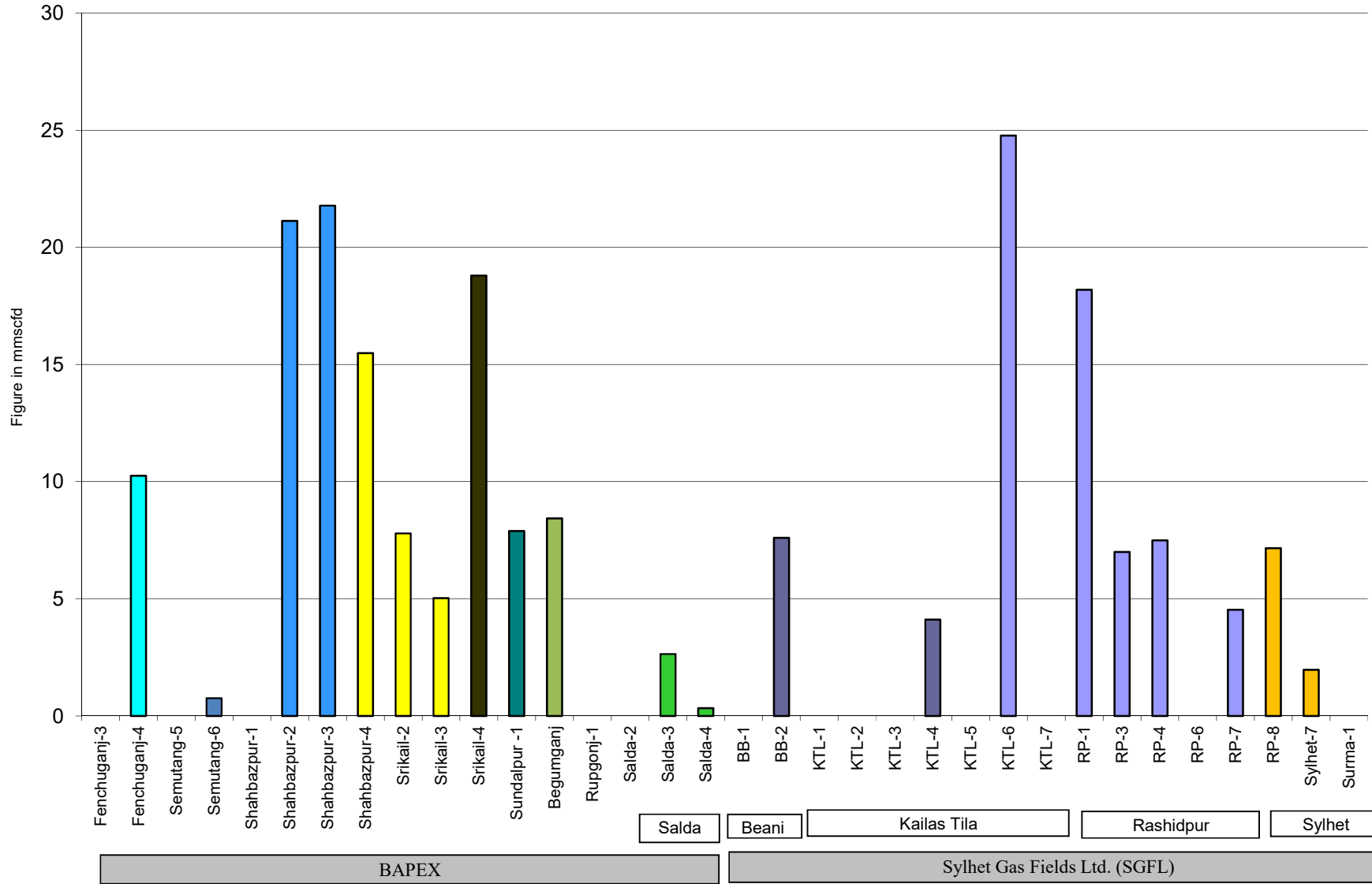
Figure in mmcf
and % of total production

Wellwise Daily Avg. Production- BGFCL November 2021

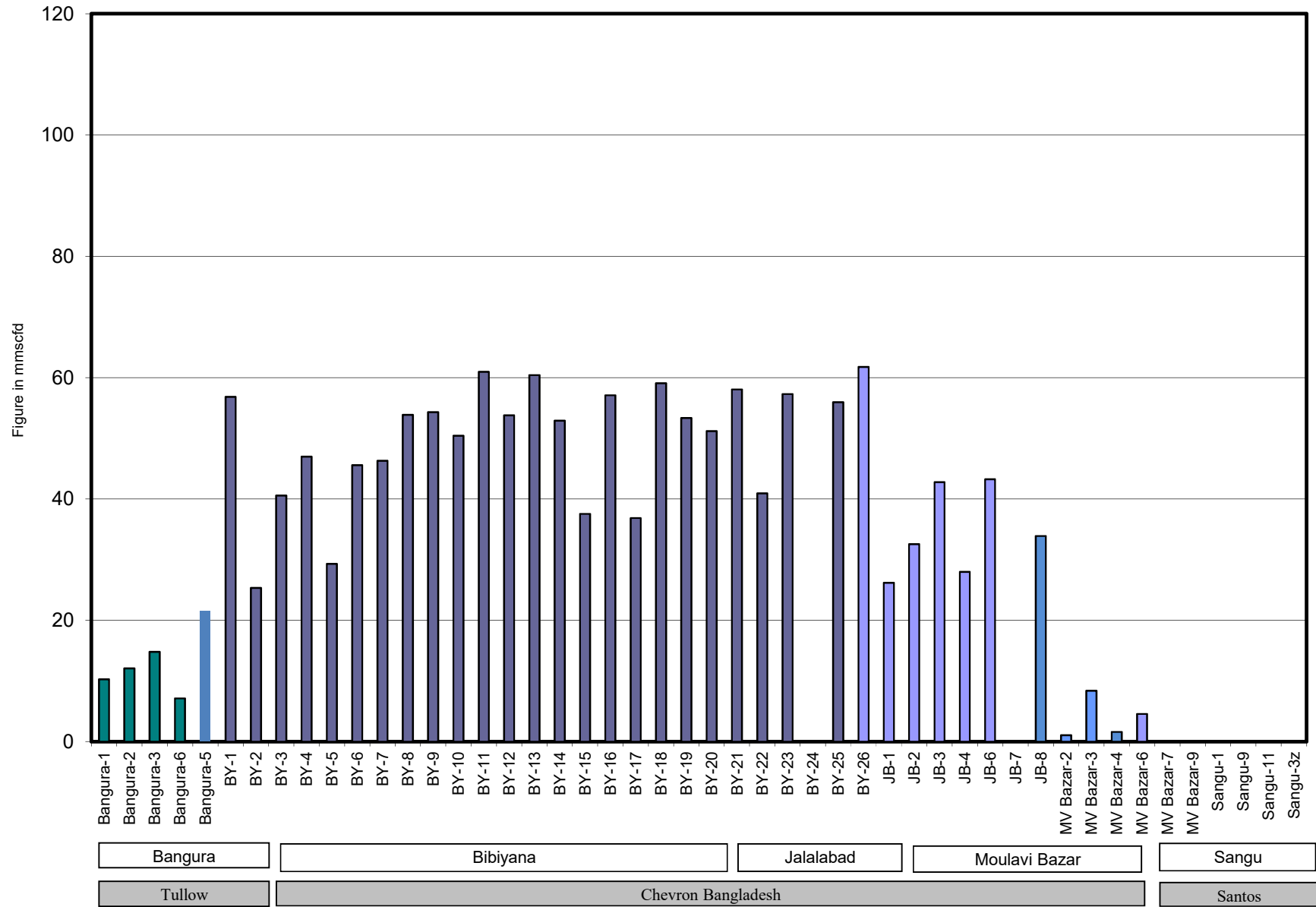


Bangladesh Gas Fields Co. Ltd. (BGFCL)

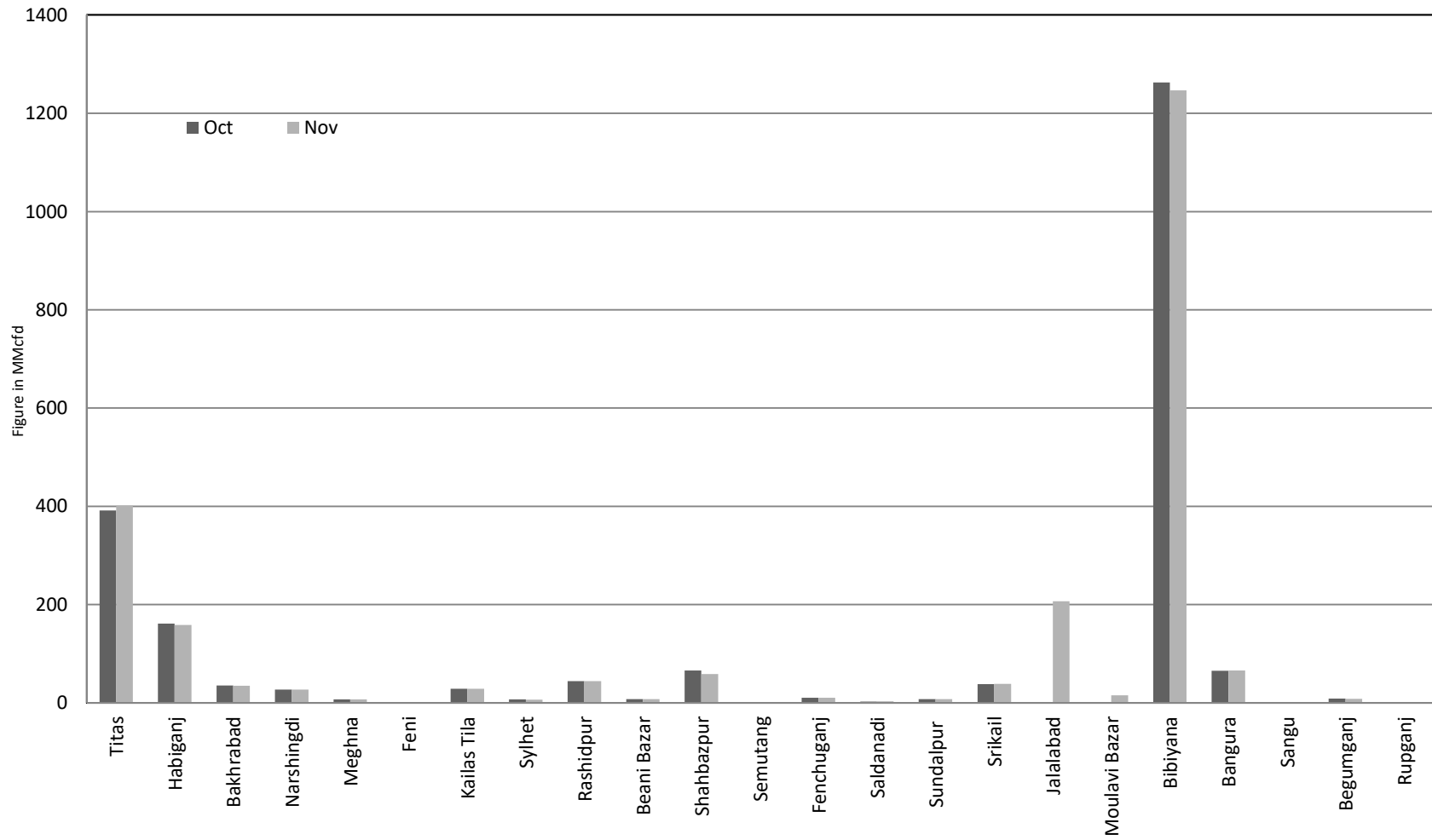
Wellwise Daily Avg. Production- Bapex and SGFL November 2021



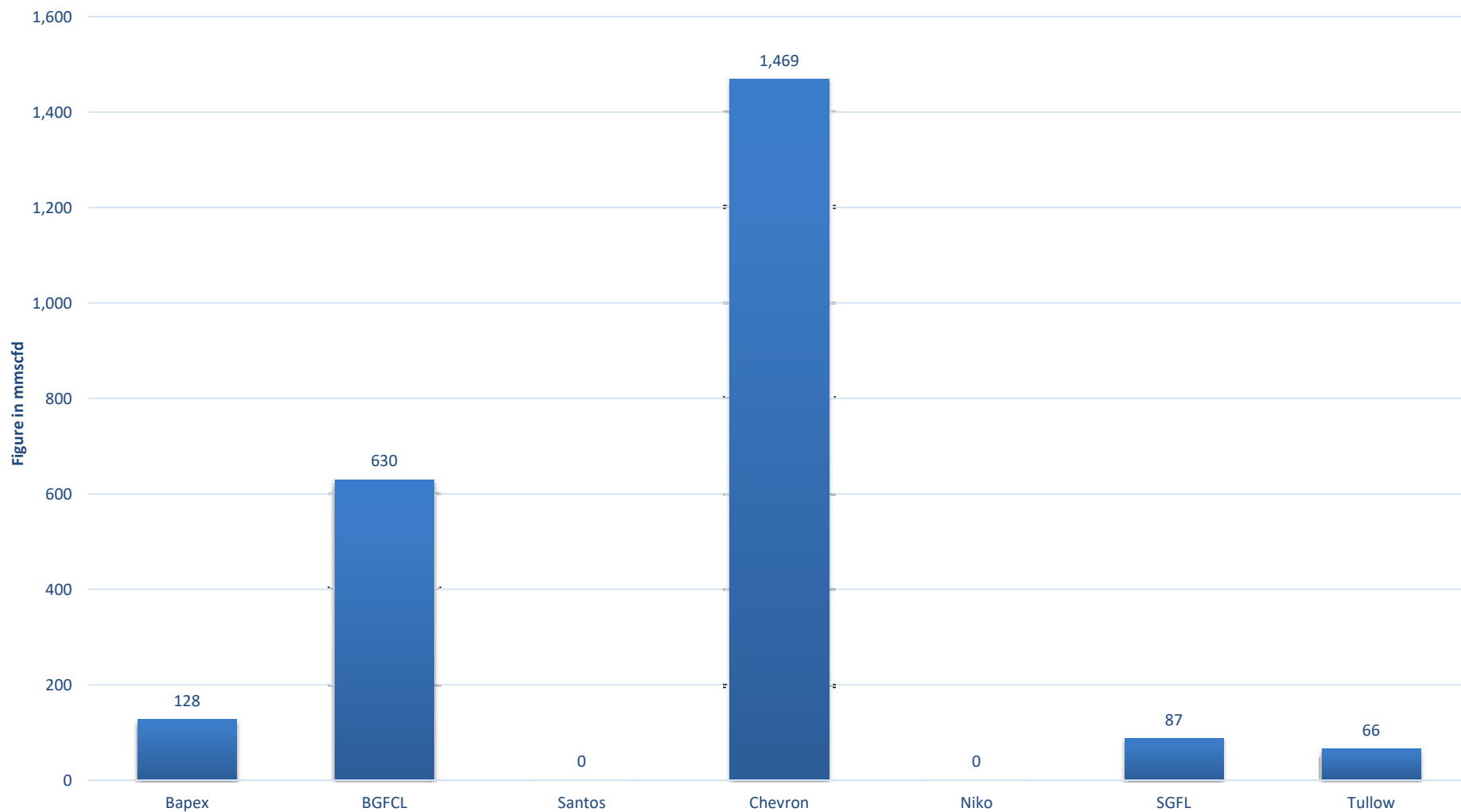
Wellwise Daily Avg. Production- IOC and JVA November 2021



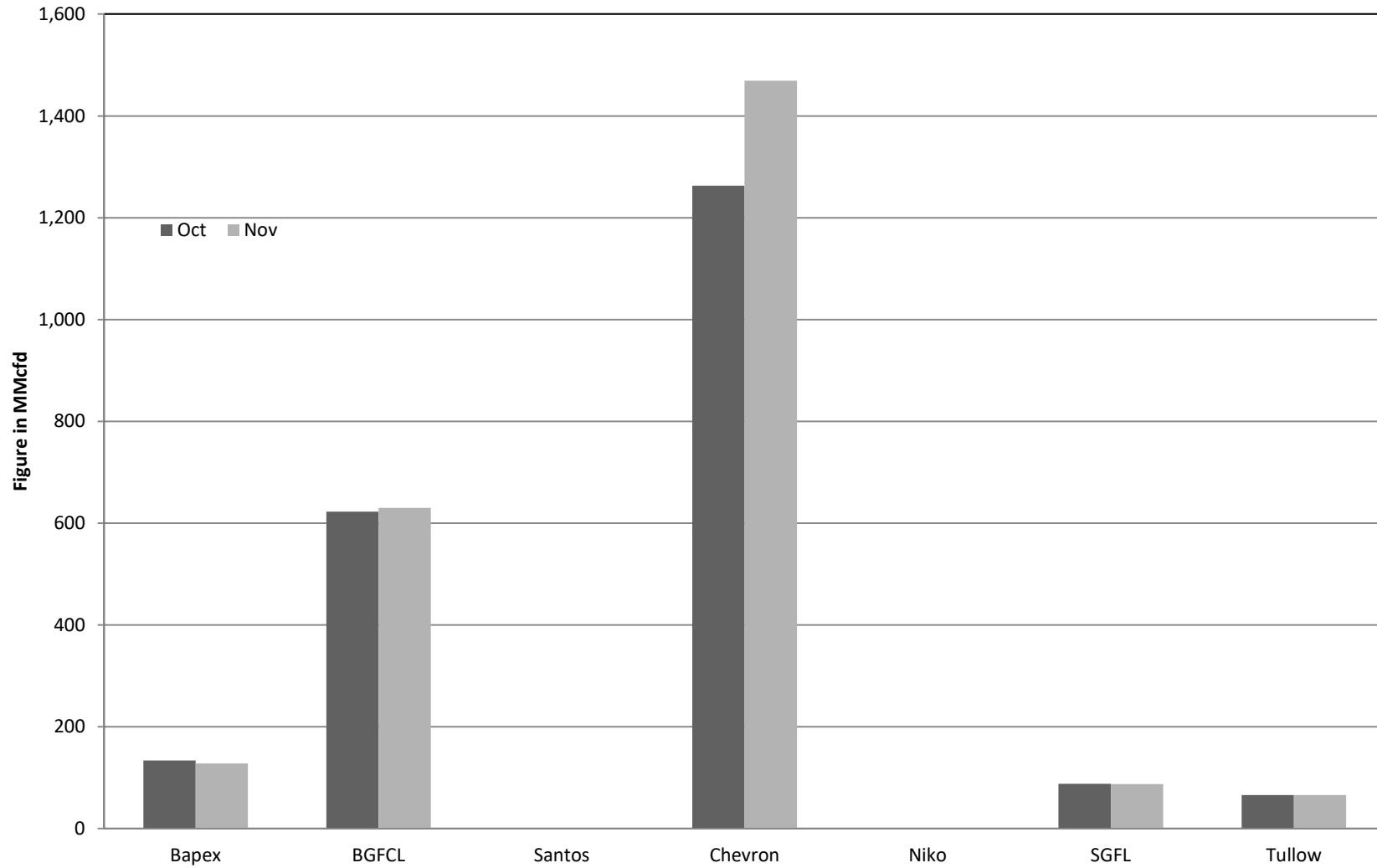
Comparison of fieldwise daily avg. Gas production between October 2021 & November 2021



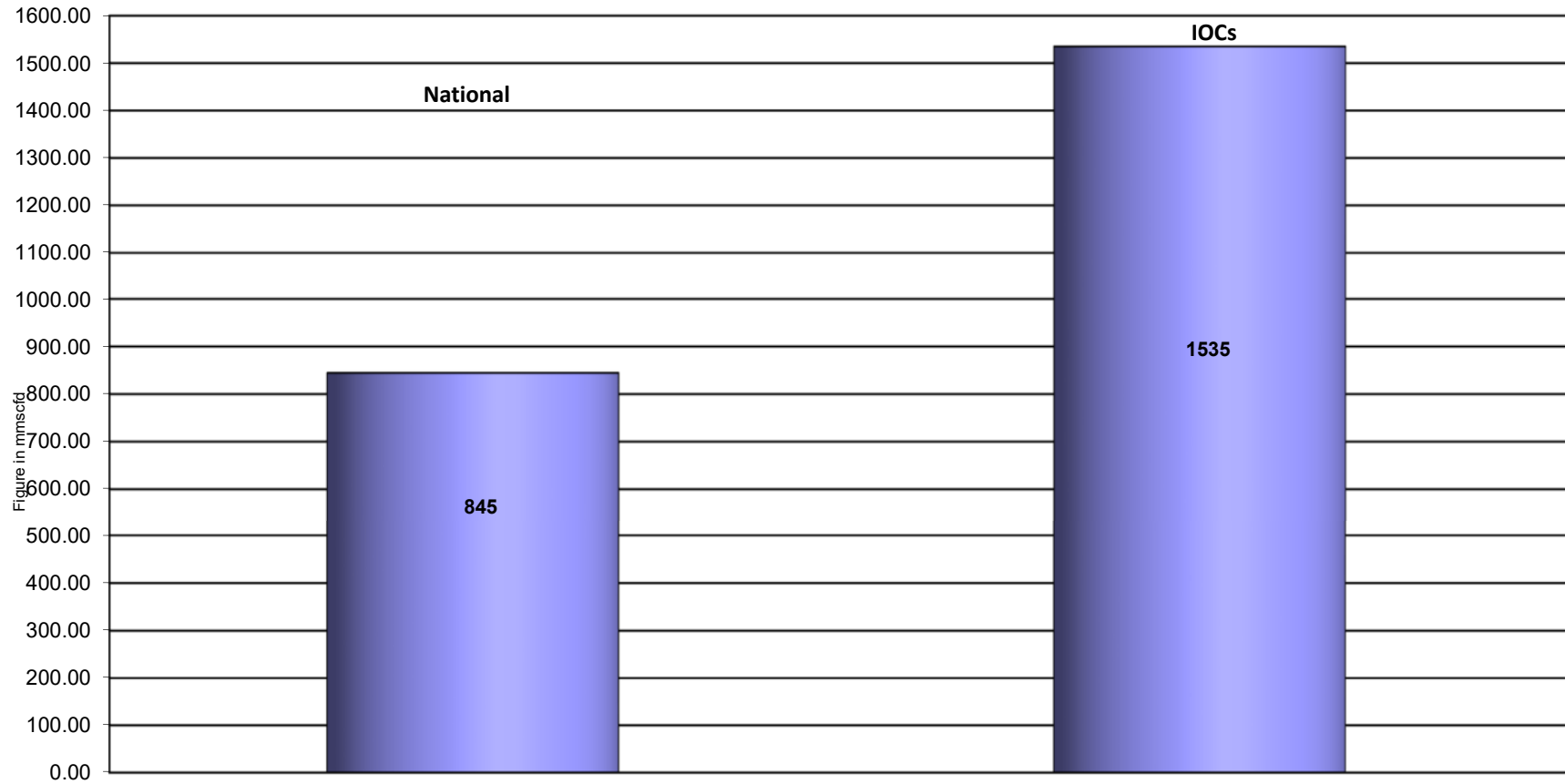
Daily Avg. Production by Operators November 2021



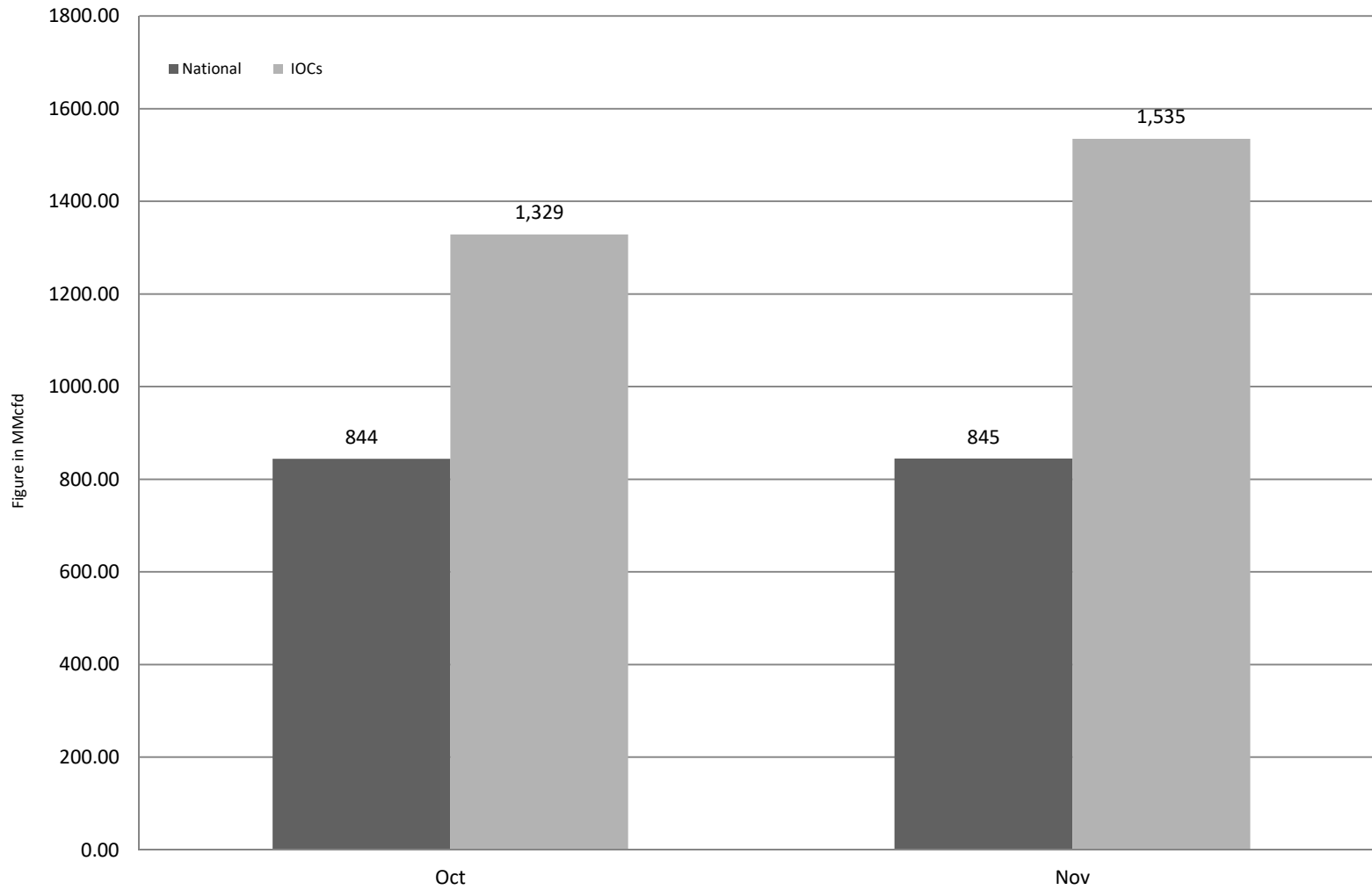
Comparison of operatorwise daily avg. Gas production between October 2021 & November 2021



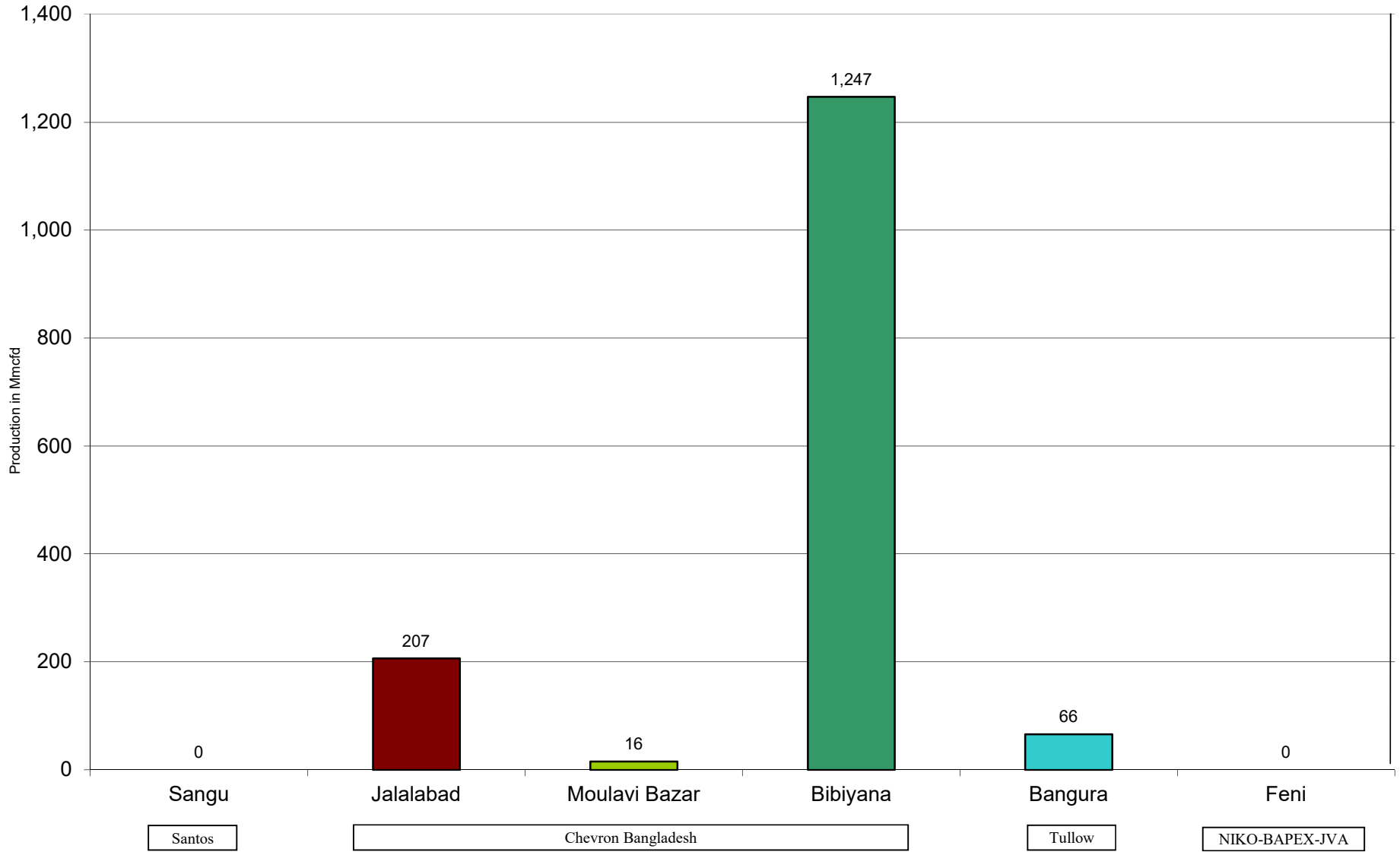
Daily Avg. Production - National Vs. IOCs November 2021



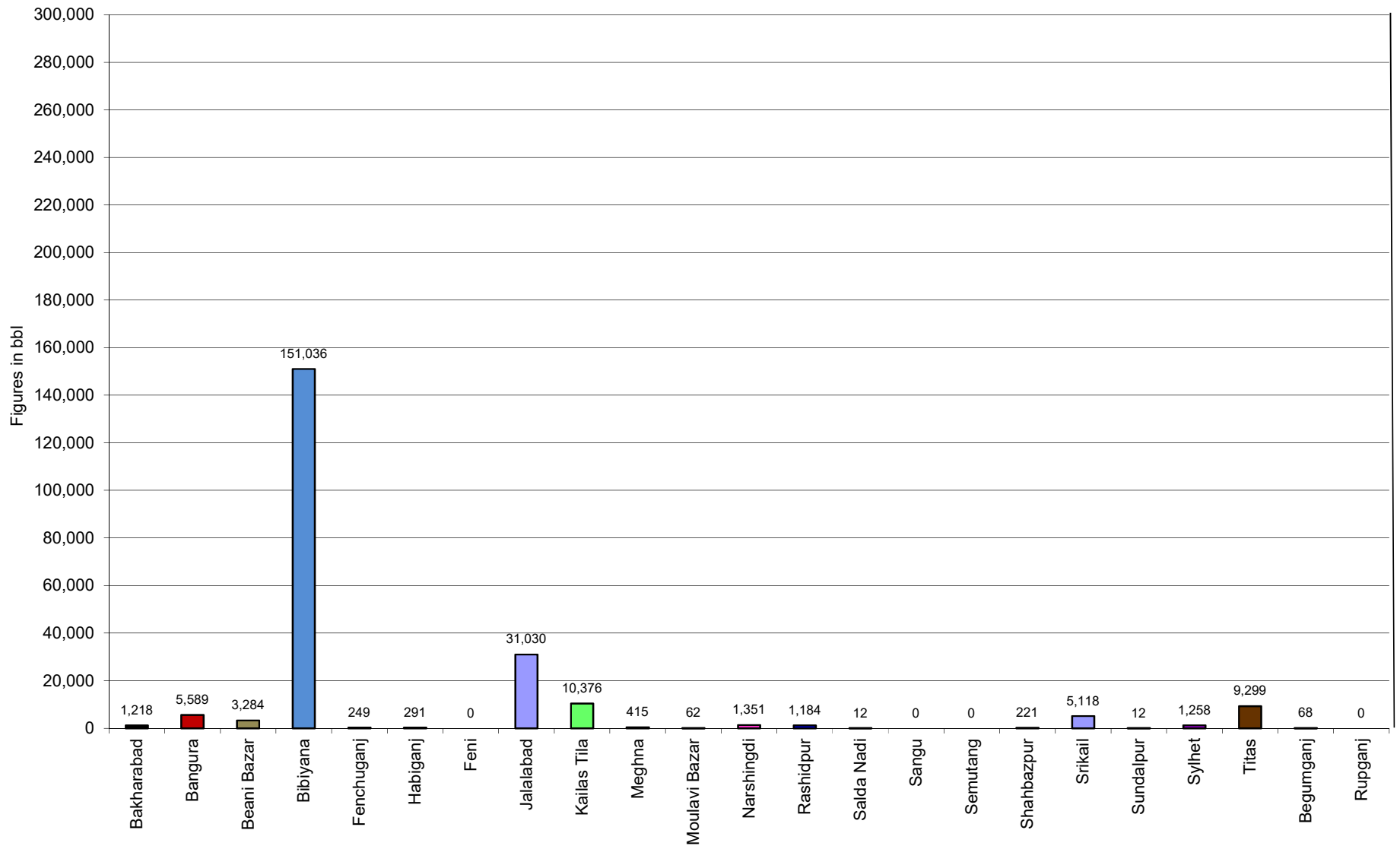
Comparison of daily avg. Gas production - National vs IOC's between October 2021 & November 2021



Daily Avg. Production - IOC and JVA November 2021



Monthly Condensate Production November 2021



Field wise Coal Reserve in Bangladesh

SI No.	Coal Basins	Proved (Mt)	Indicated (Mt)	Inferred (Mt)	Total (Mt)
1	Barapukuria	114.32	211.33	21.06+(43-64)*	346.71+(43-64)*
2	Phulbari	288	226	58	572
3	Khalashpir	-	297.57	225.92	523.49
4	Jamalganj	-	-	1053.9	1053.9
5	Dighipara	-	105	495	600
	Total	402.32	839.9	1896.88-1917.88	3139.10-3160.10

**Resources of VI Seam in second syncline are towards SW of main basin, after Wardell Armstrong*

NOTE: Reserve Figure based on Coal Sector Development Strategy (Final), HCU, PwC

Summary of Reserve and Production of Barapukuria Coal Mine As of November 2021

Coal Initially Place (Proven + Probable)	346,710 kT	346.71 MT
Total Reserve of Seam VI	285,410 kT	285.41 MT
Recoverable from Seam VI Central part(Proven + Probable)	16,540 kT*	16.54 MT
Coal Production in November 2021	56.31 kT	0.06 MT
Cumulative Production as of November 2021	12,435 kT	12.43 MT
Remaining Reserve	4,105 kT	4.11 MT

NOTE: Reserve figure based on Mines and Minerals Development Report ,HCU PwC

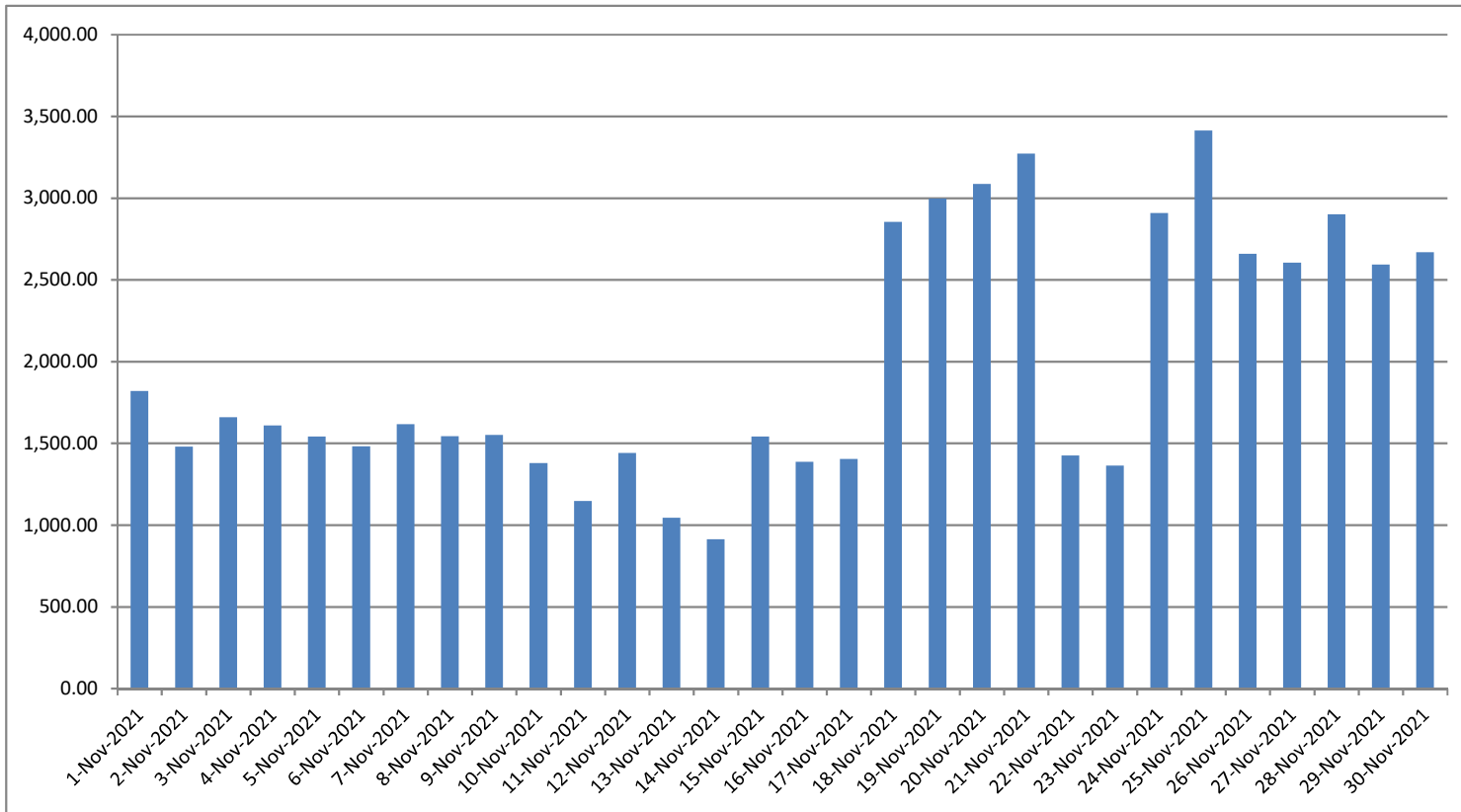
*Figure from BCMCL, M/S Wardell Armstrong. According to Mines and Minerals Development Report ,HCU, PwC this figure is 64.8 Mt

Barapukuria Coal Mine-MPM and P Contract (BCMCL)
Measurement Record: Surface Belt Weigher
Measurement Period: November 2021

Day wise data	Consortium Daily Output (ton)	Consortium Cumulative Total	BCMCL Daily Output	BCMCL Cumulative Total	Remarks
1-Nov-2021	1,819.98	1,819.98	1,819.98	1,819.98	
2-Nov-2021	1,479.69	3,299.67	1,479.69	3,299.67	
3-Nov-2021	1,658.83	4,958.50	1,658.83	4,958.50	
4-Nov-2021	1,608.71	6,567.21	1,608.71	6,567.21	
5-Nov-2021	1,541.52	8,108.73	1,541.52	8,108.73	
6-Nov-2021	1,482.34	9,591.07	1,482.34	9,591.07	
7-Nov-2021	1,616.93	11,207.99	1,616.93	11,207.99	
8-Nov-2021	1,544.35	12,752.34	1,544.35	12,752.34	
9-Nov-2021	1,550.91	14,303.25	1,550.91	14,303.25	
10-Nov-2021	1,379.59	15,682.84	1,379.59	15,682.84	
11-Nov-2021	1,147.59	16,830.43	1,147.59	16,830.43	
12-Nov-2021	1,441.44	18,271.87	1,441.44	18,271.87	
13-Nov-2021	1,044.16	19,316.03	1,044.16	19,316.03	
14-Nov-2021	913.48	20,229.50	913.48	20,229.50	
15-Nov-2021	1,540.59	21,770.09	1,540.59	21,770.09	
16-Nov-2021	1,387.61	23,157.71	1,387.61	23,157.71	
17-Nov-2021	1,403.66	24,561.37	1,403.66	24,561.37	
18-Nov-2021	2,855.10	27,416.47	2,855.10	27,416.47	
19-Nov-2021	2,996.85	30,413.31	2,996.85	30,413.31	
20-Nov-2021	3,086.08	33,499.39	3,086.08	33,499.39	
21-Nov-2021	3,272.31	36,771.70	3,272.31	36,771.70	
22-Nov-2021	1,425.75	38,197.44	1,425.75	38,197.44	
23-Nov-2021	1,363.21	39,560.65	1,363.21	39,560.65	
24-Nov-2021	2,908.15	42,468.81	2,908.15	42,468.81	
25-Nov-2021	3,414.14	45,882.95	3,414.14	45,882.95	
26-Nov-2021	2,660.10	48,543.05	2,660.10	48,543.05	
27-Nov-2021	2,604.22	51,147.27	2,604.22	51,147.27	
28-Nov-2021	2,900.79	54,048.07	2,900.79	54,048.07	
29-Nov-2021	2,592.92	56,640.99	2,592.92	56,640.99	
30-Nov-2021	2,668.56	59,309.55	2,668.56	59,309.55	

less Difference in Water Content:	3002.122
Less Out of Seam dilution:	0
Coal adjustment for scale recalibration	0
Output (tons) measured by Belt Weigher:	56,307.43
Tonnes mined in DARR	0
Net Output after removing DARR	56,307.43

Barapukuria Coal Mine Daywise Data Graph for November 2021



Conclusion

Gas Production in this month is more than the previous month. If the current production rate continues, evidently it can be said that gas production is going to be decreased more with time. However, the government has taken several steps to deal with the reduction in gas production. The government has already formulated the Power Sector Master Plan and initiative has been taken to produce a large portion of the electricity using coal to minimize the gas use in power generation. Gas exploration activities by BAPEX & IOCs have been strengthened and some prospective wells have already been identified. Discoveries of more new wells are much expected in the future. Besides onshore, exploration activities are being undertaken in the offshore and fields with large amount of gas are expected. In some old gas fields, the 3D Seismic survey has revealed more reserves of gas than before. For example, using new technology Bibiyana gas field found an increase of its reserve and a further production for some additional periods will continue. The government has taken initiative to meet the demand of energy through import of LNG, already LNG supplies have started and more LNG will be added to the national grid in the next few years. GSMP has been formulated and new entrepreneur-friendly PSC is being revised. Considering all the perspectives, it can be depicted that in the near future, Bangladesh is prepared to meet the Energy demand and ensure the supply of uninterrupted energy for achieving the Vision-2121, SDG-2030 and Vision-2041.